

LUNACY

Hole 1

Par 4

720ft

Notes:

Mando left of first tree, proceed to DZ plus one stroke if missed. Surrounded by sidewalks, beyond fences, and line near creek is OB. Play it from where you went out plus one stroke.



CENTENNIAL SUNDAY

LUNACY

Hole 2

Par 3

379ft

Notes:

Beyond fences and line near creek is OB. Play it from where you went out plus one stroke.



CENTENNIAL SUNDAY

LUNACY

Hole 3

Par 3

275ft

Notes:

Mando left of marked tree.
DZ plus one stroke if missed.
Surrounded by sidewalk and
beyond is OB. Play if from
where you went out plus one
stroke.



CENTENNIAL SUNDAY

LUNACY



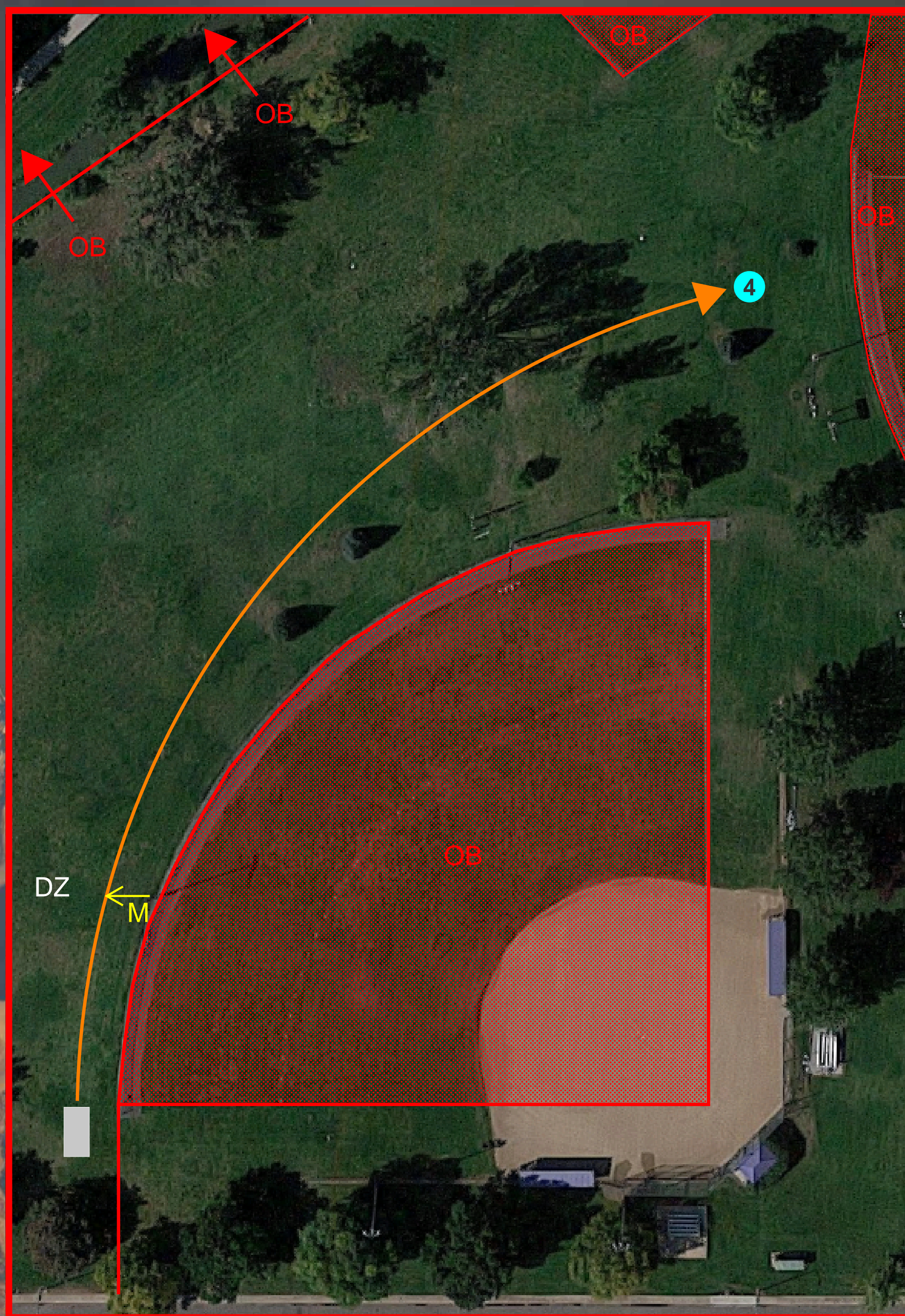
Hole 4

Par 3

485ft

Notes:

Mando left of marked pole. DZ plus one stroke if missed. Beyond fences and line near creek is OB.



CENTENNIAL SUNDAY

LUNACY

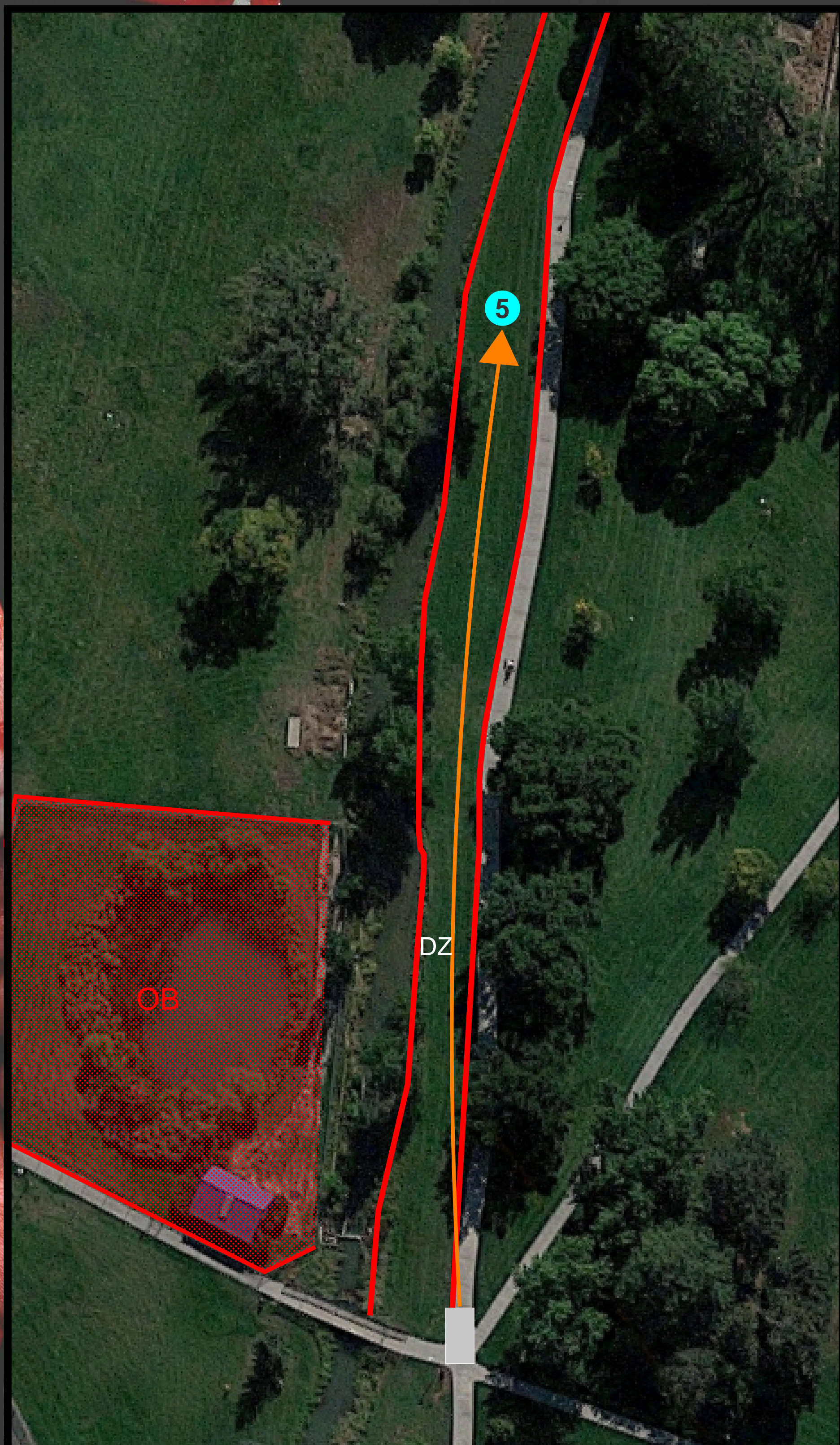
Hole 5

Par 3

390ft

Notes:

Sidewalk and beyond is OB. Line near creek and beyond is OB. If not in bounds on first shot, proceed to DZ plus one stroke. All throws from DZ play from where you went out plus one stroke.



CENTENNIAL SUNDAY

LUNACY

Hole 6

Par 3

320ft

Notes:

All sidewalks and beyond are OB. Play it from where you went out plus one stroke.



CENTENNIAL SUNDAY

LUNACY

Hole 7

Par 4

540ft

Notes:

On concrete and beyond north sidewalk is OB. Wood chipped areas near building are in bounds. The statue is safe. Play it from where you went OB plus one stroke.



CENTENNIAL SUNDAY

LUNACY

Hole 8

Par 4

685ft

Notes:

Surrounded by sidewalk and beyond fences are OB. Play it from where you went out plus one stroke.



CENTENNIAL SUNDAY

LUNACY

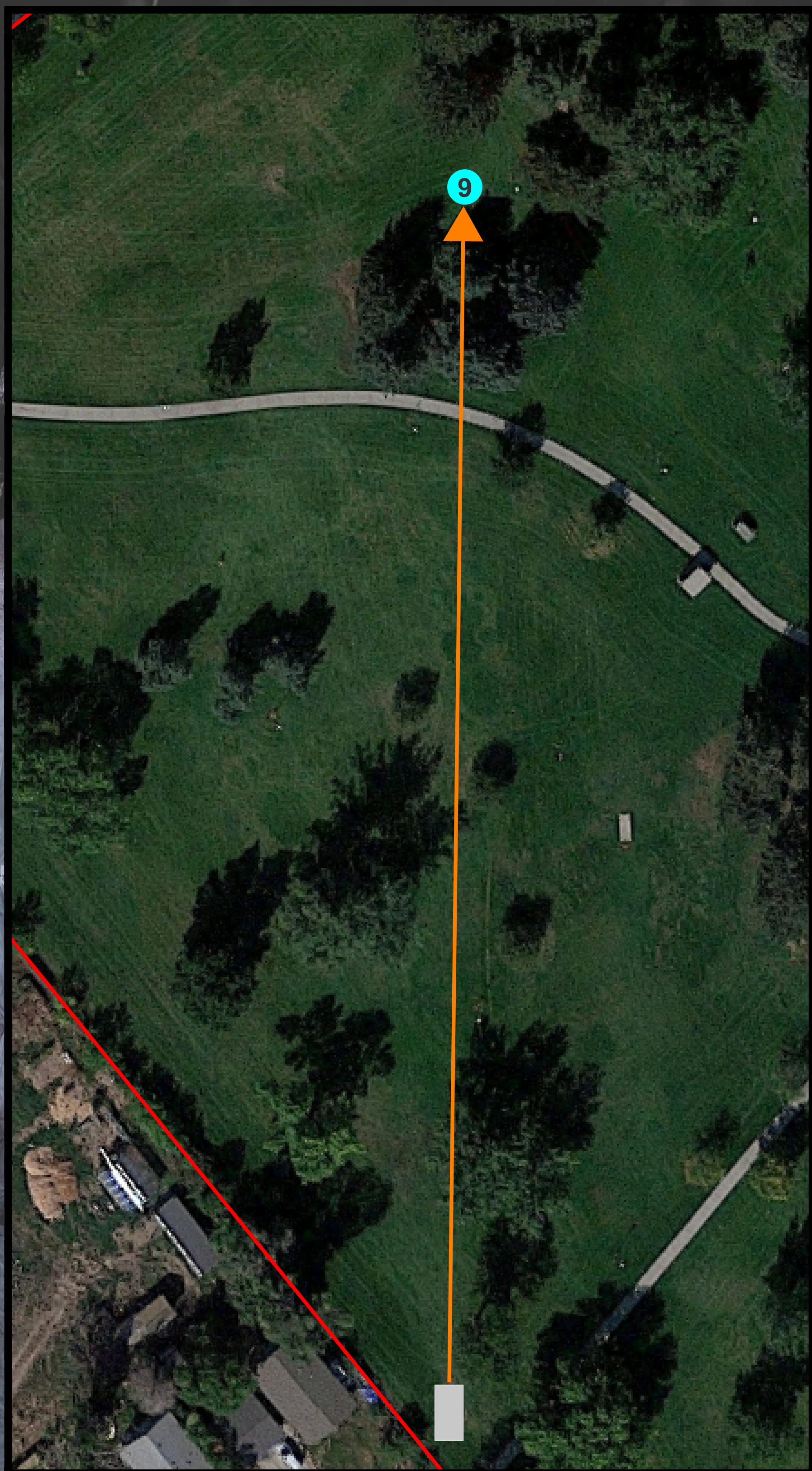
Hole 9

Par 4

530ft

Notes:

Surrounded by sidewalk is OB.
Play it from where you went
out plus one stroke.



CENTENNIAL SUNDAY

LUNACY

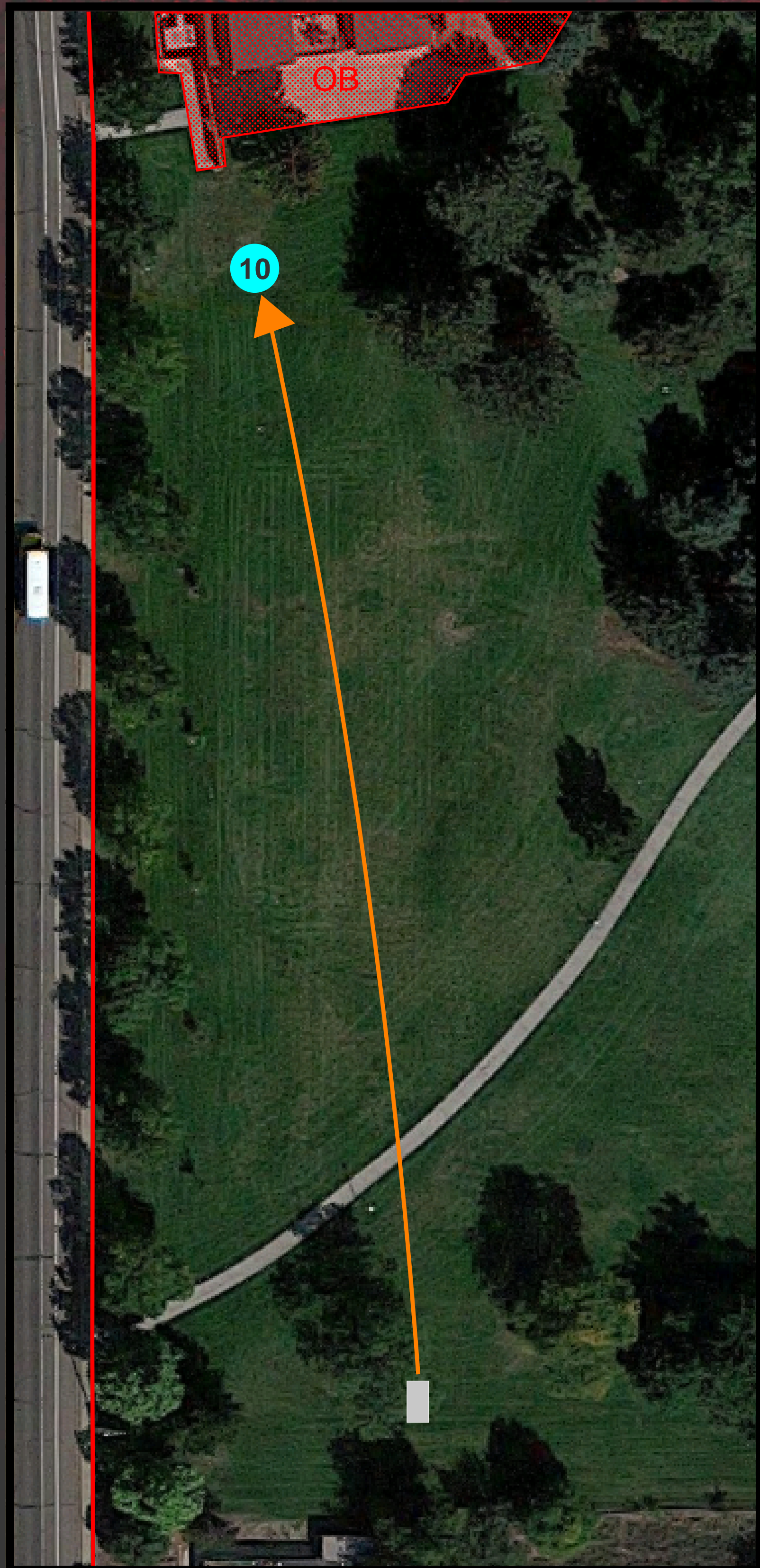
Hole 10

Par 3

385ft

Notes:

Surrounded by sidewalk or in the street is OB. All concrete around the building is OB. Play it from where you went out plus one stroke.



CENTENNIAL SUNDAY