

LUNACY

Hole 1

Par 3

500ft

Notes:

Surrounded by sidewalk is OB.
Beyond fences and line near
creek is OB. Play it from where
you went out plus on stroke.



CENTENNIAL SATURDAY

LUNACY

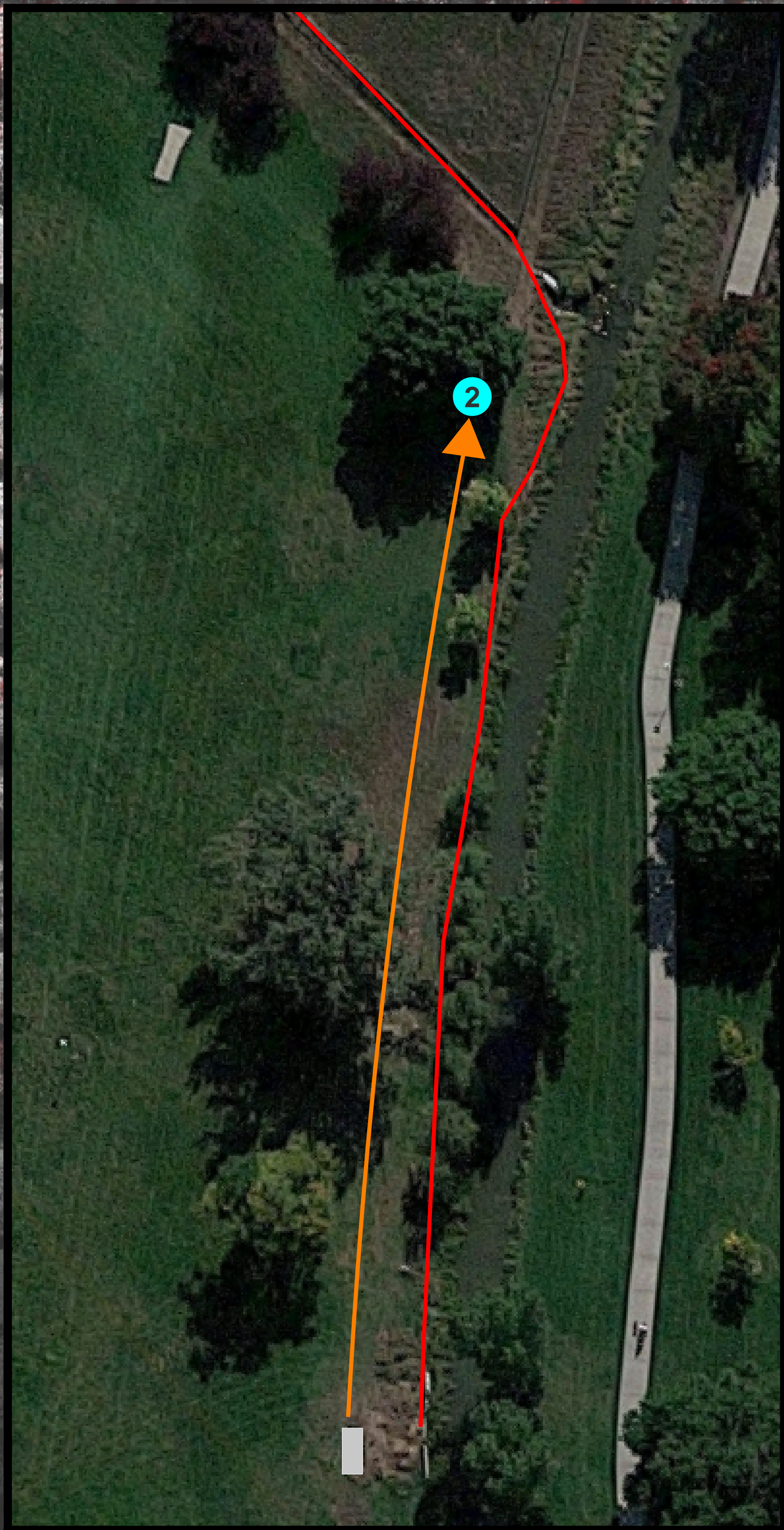
Hole 2

Par 3

301ft

Notes:

Beyond fences and line near creek is OB. Play it from where you went out plus one stroke.



CENTENNIAL SATURDAY

LUNACY

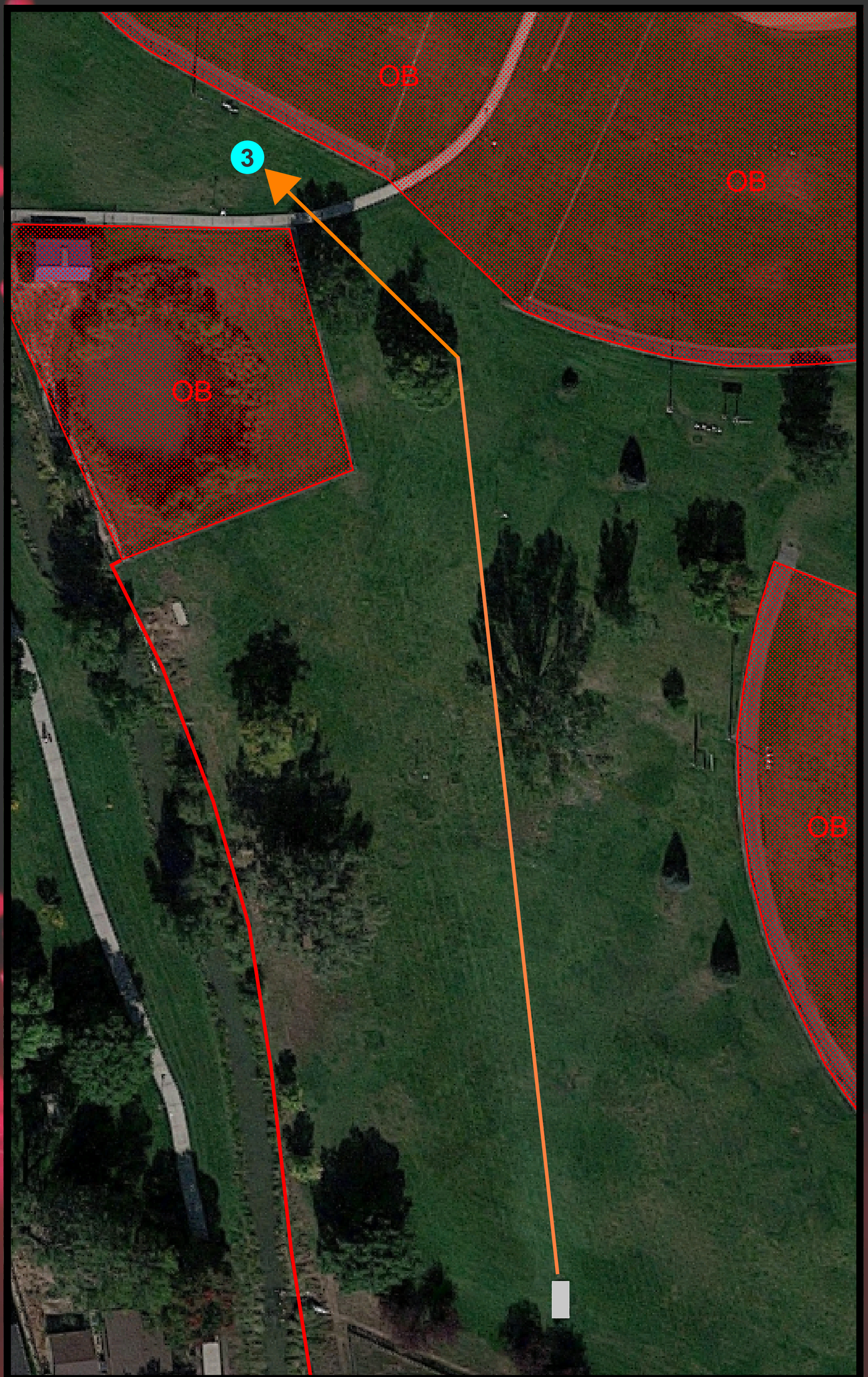
Hole 3

Par 4

572ft

Notes:

Surrounded by sidewalks is OB. Beyond fences and line near creek is OB. Beyond the line connecting ballfields near basket is OB. Play it from where you went out plus one stroke.



CENTENNIAL SATURDAY

LUNACY



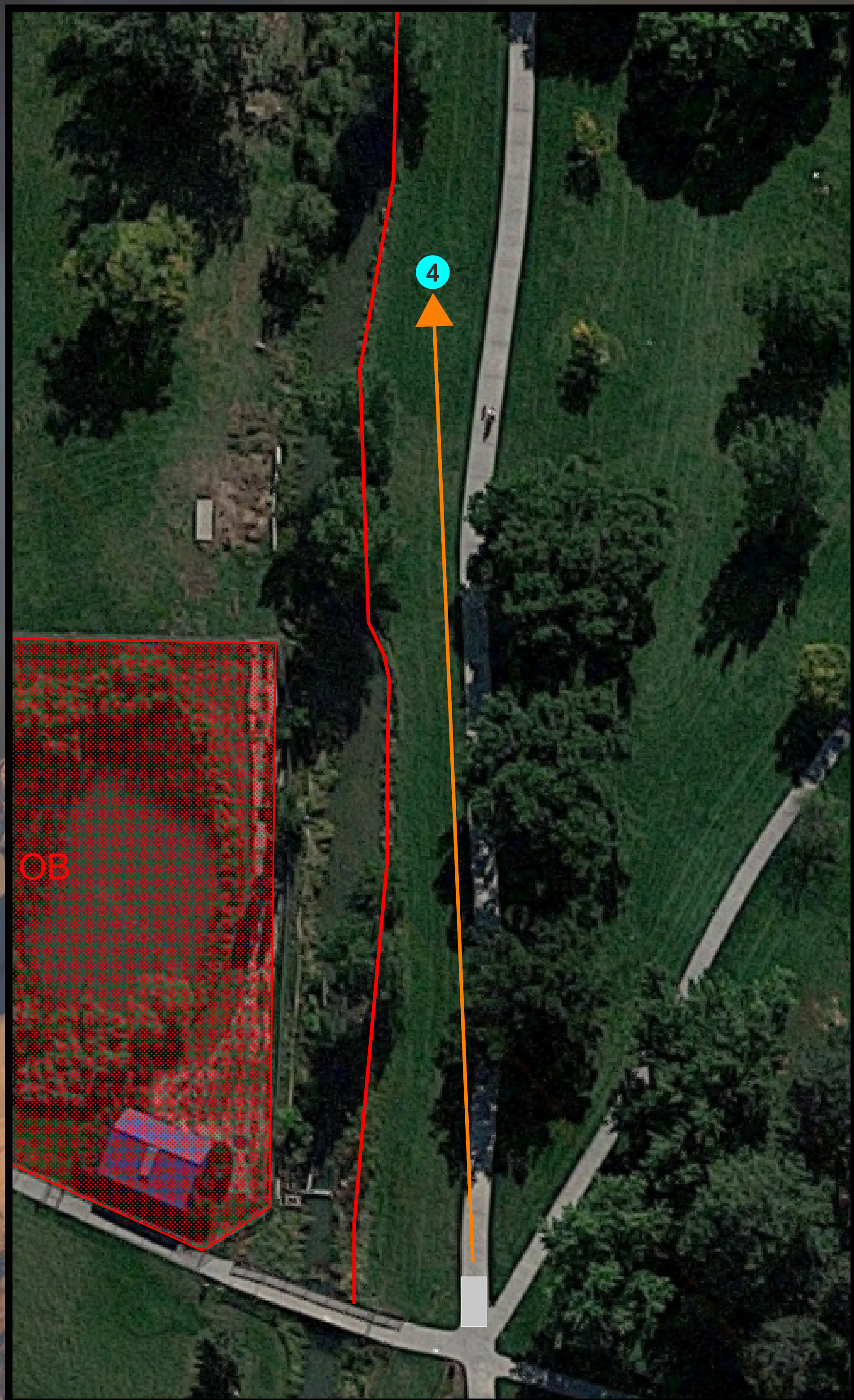
Hole 4

Par 3

300ft

Notes:

Surrounded by sidewalks
and beyond line near creek is
OB. Play it from where you
went out plus one stroke.



CENTENNIAL SATURDAY

LUNACY

Hole 5

Par 3

389ft

Notes:

Surrounded by sidewalks and beyond line near creek is OB. Play it from where you went out plus one stroke.



CENTENNIAL SATURDAY

LUNACY

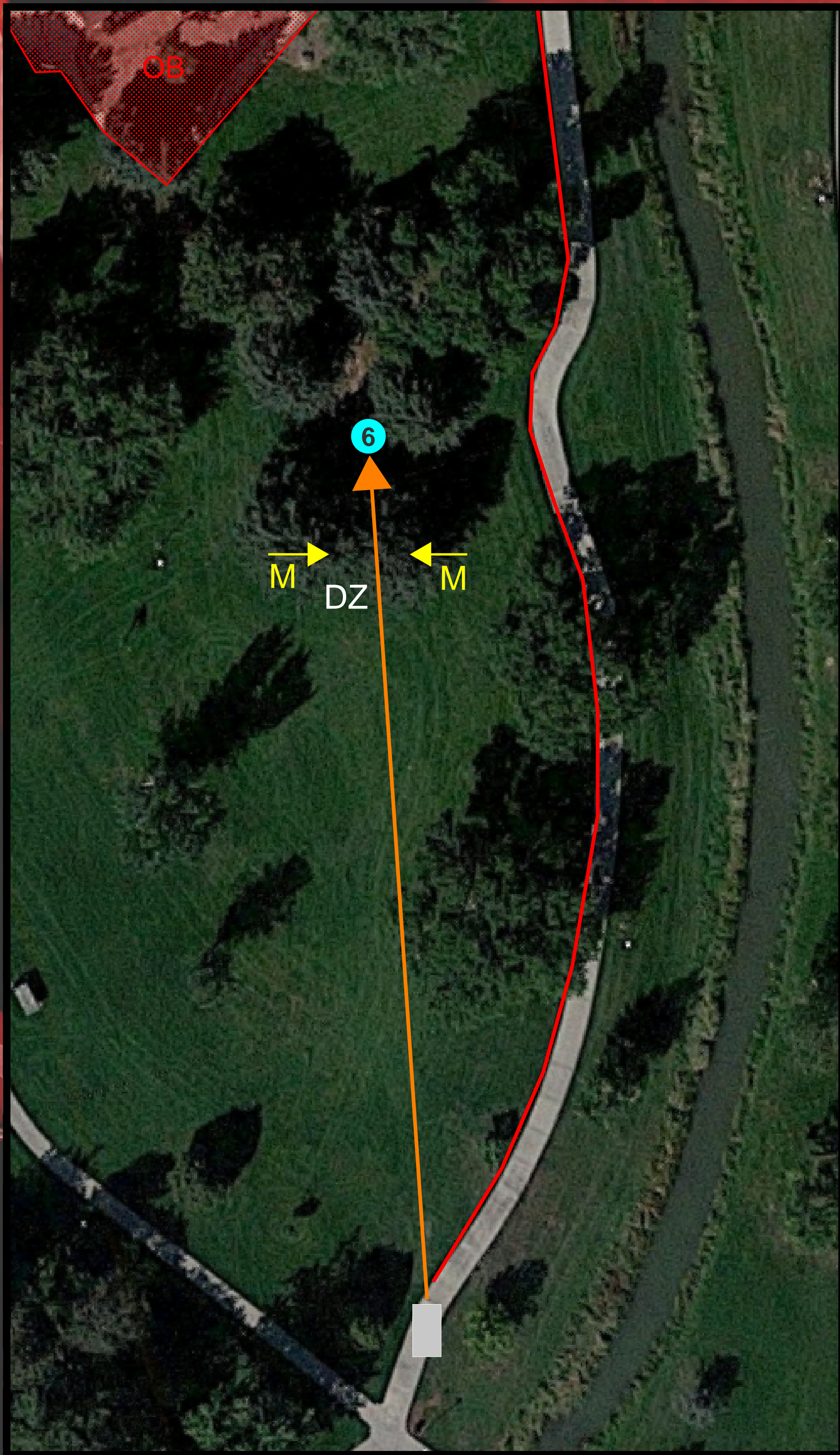
Hole 6

Par 3

280ft

Notes:

Double mando. Sidewalk and beyond is OB. If OB early, you must still make the mando. DZ plus one stroke if mando is missed.



CENTENNIAL SATURDAY

LUNACY

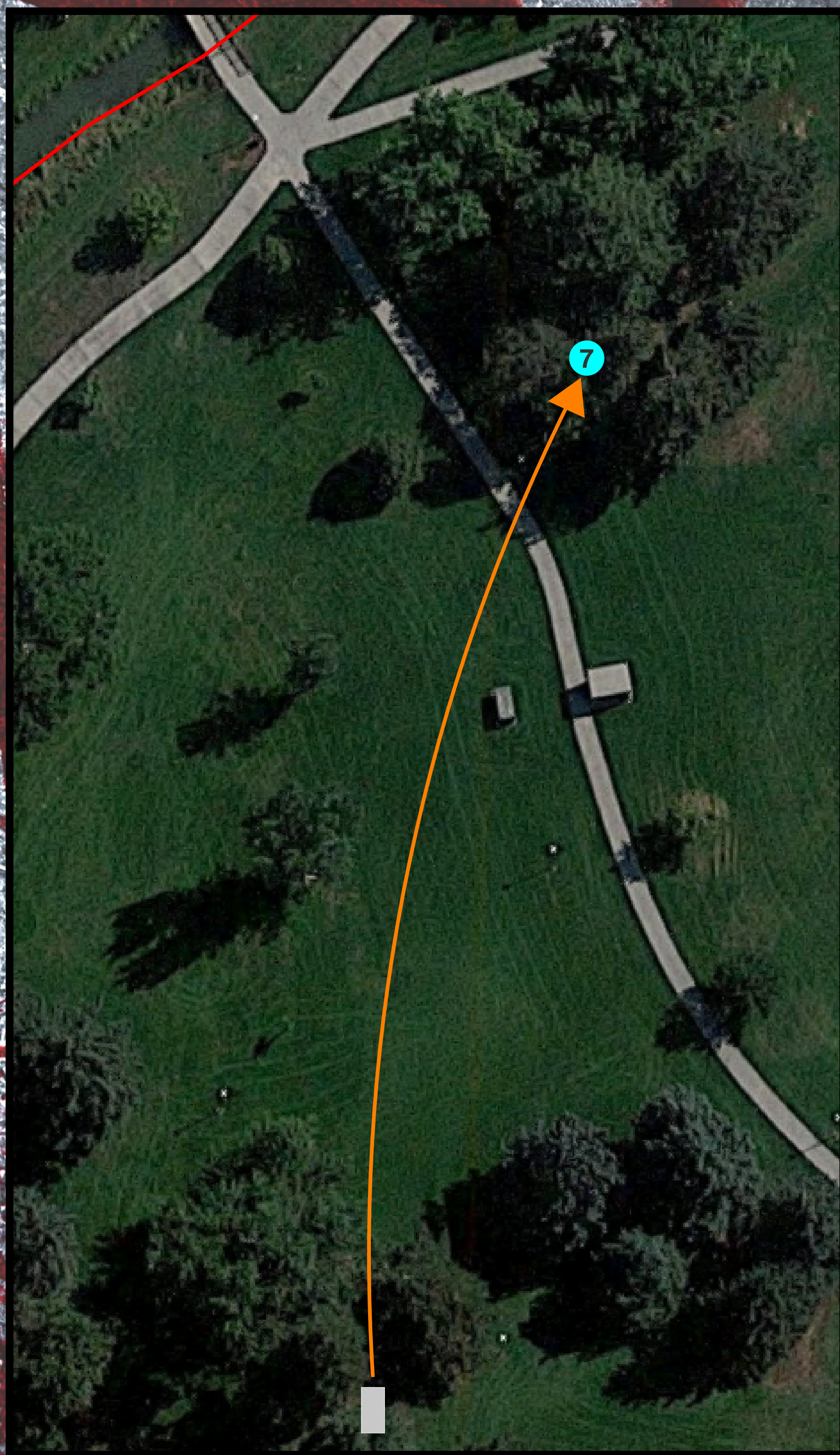
Hole 7

Par 3

320ft

Notes:

Surrounded by sidewalks and beyond line near creek is OB. Play it from where you went out plus one stroke.



LUNACY

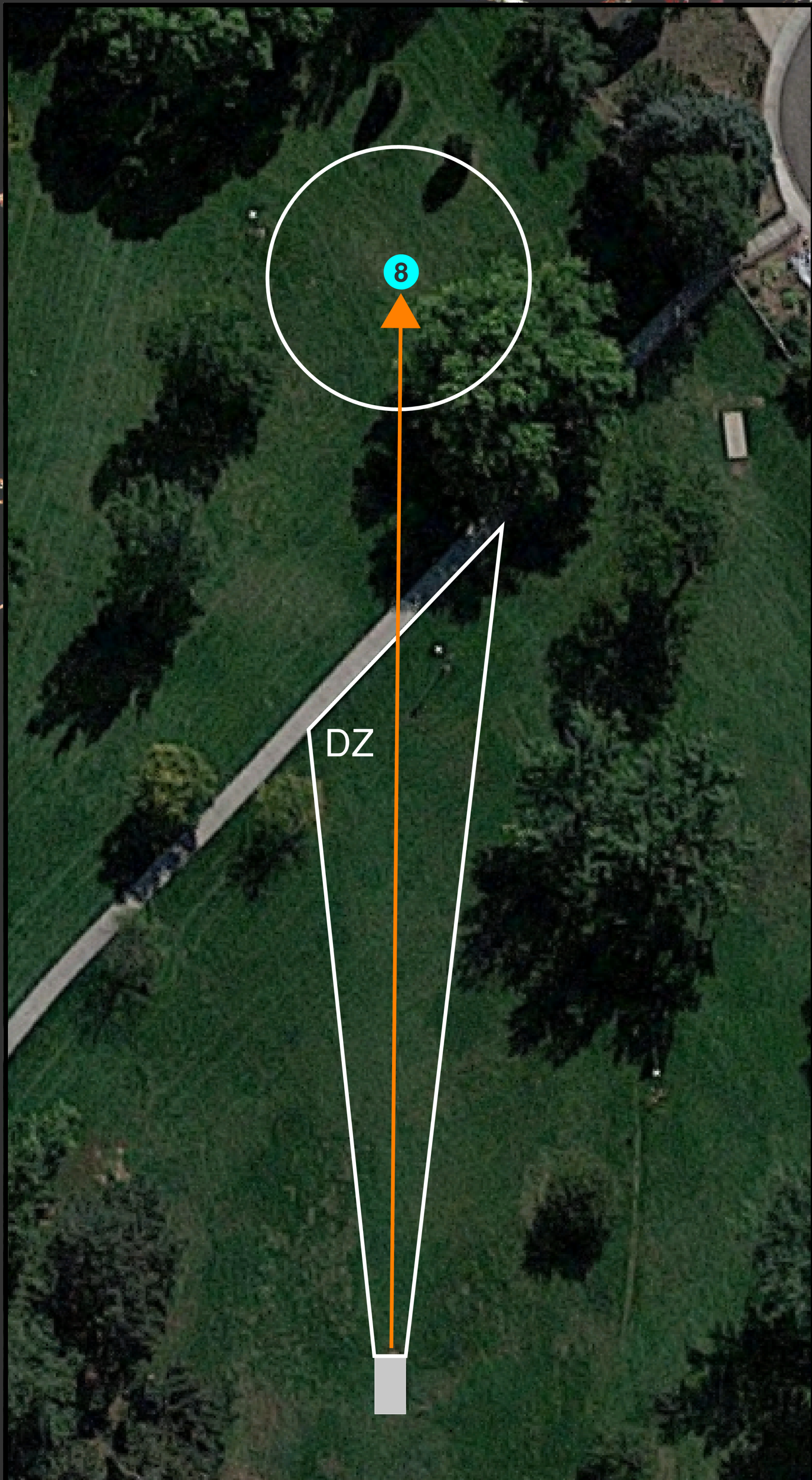
Hole 8

Par 3

290ft

Notes:

Island hole with wedge shaped lay-up zone. If OB off the tee, proceed to DZ plus one stroke. Regular OB rules there after.



CENTENNIAL SATURDAY

LUNACY

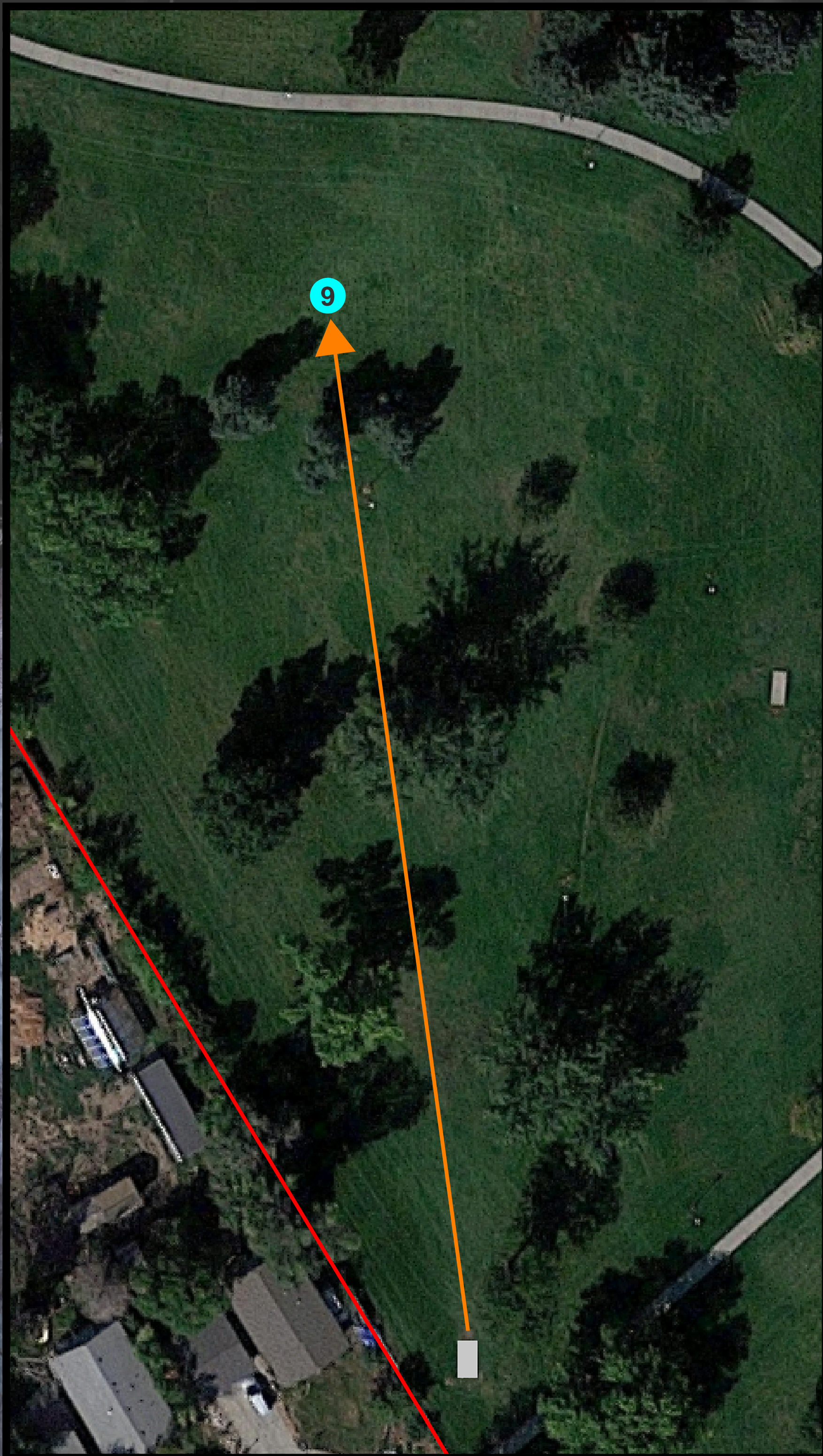
Hole 9

Par 3

380ft

Notes:

Surrounded by sidewalks is OB. Play it from where you went out plus one stroke.



CENTENNIAL SATURDAY

LUNACY

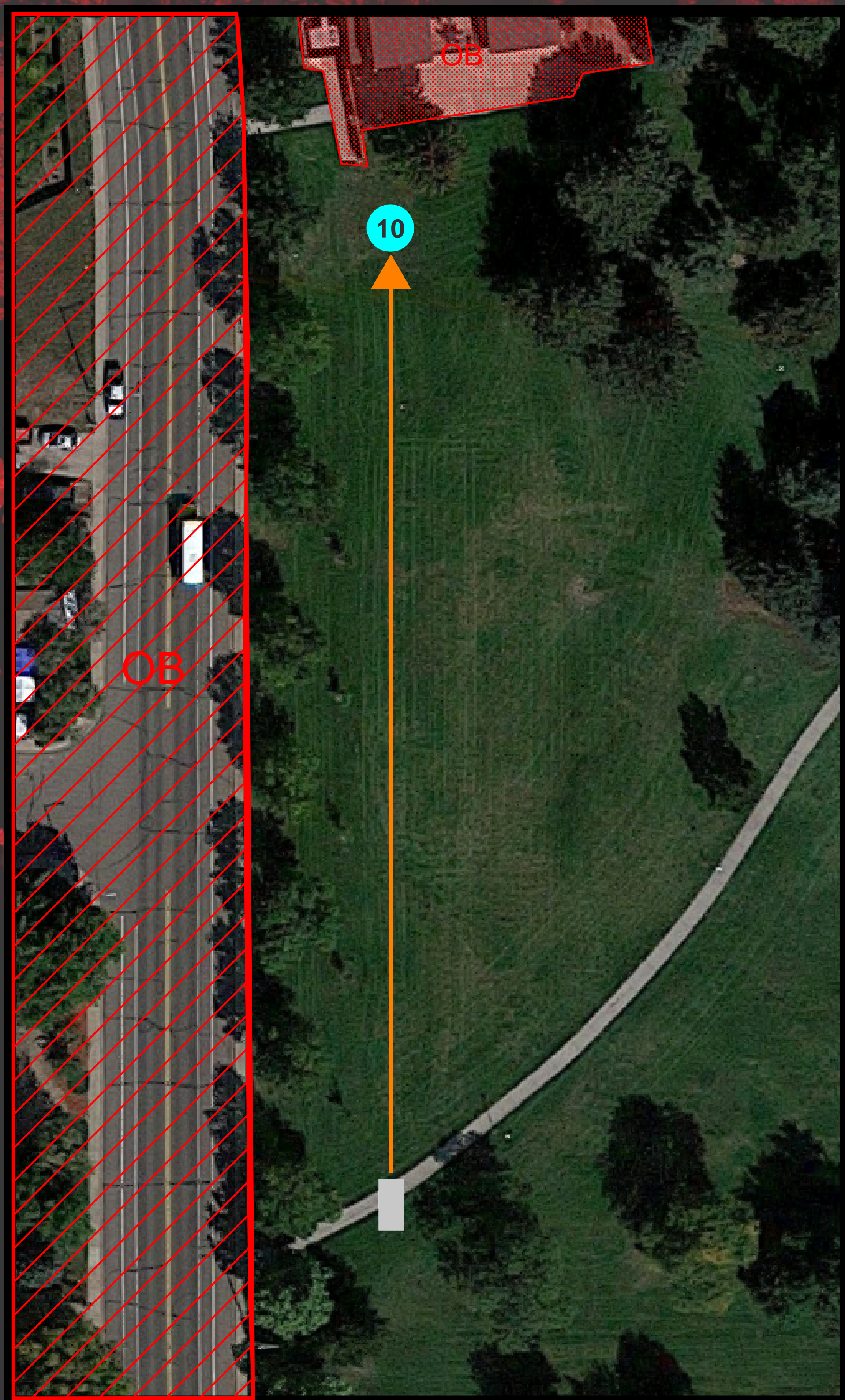
Hole 10

Par 3

335ft

Notes:

Surrounded by sidewalk or in the street is OB. All concrete around the building is OB. Play it from where you went out plus one stroke.



CENTENNIAL SATURDAY