



MINETT OPEN 2025

PDGA



	1	2	3	4	5	6	7	8	9	
par	3	3	3	3	3	3	3	3	3	27
m	98	89	55	88	104	101	93	70	123	821



Caddybook





Disc Golf Club Luxembourg is pleased to invite to 2025 Minett Open - a one day PDGA C-tier tournament at the beautiful Park Um Belval! Come and celebrate the 5th anniversary of this classic with us!

The tournament will be played in 2 x 18 format, on 9-hole course, the layout played twice each round, without break.

The event is organized by Disc Golf Club Luxembourg according to the official PDGA rules with any special rules described in this caddybook.

The 2025 edition will also be the third leg of this year's **Four Nations Cup**, a Cup of the bigger region between Belgium, France, Germany and Luxembourg.



Scoring. For scoring we'll be using PDGA Digital Scorecard.
Login: **M02025**

Groups. Round 1. - random groups, mixed divisions.
Round 2. - players grouped by scores within divisions.

Contests. CTP contest will take place. Details will be provided at the meeting.

Ties. Any ties at podium places will be resolved with sudden death playoff played at holes 1 and 2 in a loop.

TD - Claude Bouvy (claude.bouvy@gmail.com)





Layout. The tournament is played on a modified 9-hole layout at DiscGolfPark in Parc Um Belval.

Teesign for each hole is included in this caddybook together with special rules applicable for particular hole.

There is a number of general special rules applicable to every hole unless specified differently:

For each hole, fairway is delimited by concrete paths. Concrete paths and area behind them is considered out-of-bounds (OB). The exception is tee for each hole where tee is placed on a concrete path.

For each hole, pavilion area (wooden platforms, top of buildings, top of roofs, pools) is considered OB.

Natural OB lines are not marked (concrete paths, stone surface, pavillion). Other limits of OB/Hazard (HZ) areas are marked with flags. There are no lines marked between flags (i.e. line goes straight between flags).

Remember: In case of doubt - throw provisional, and if OB/HZ is too close to call - rule in favour of player.

par 3

**OB right of the
edge of the stone.**

**Mando right of the
marked tree. DZ
for the mando
next to the stone
block closest to
the basket.**



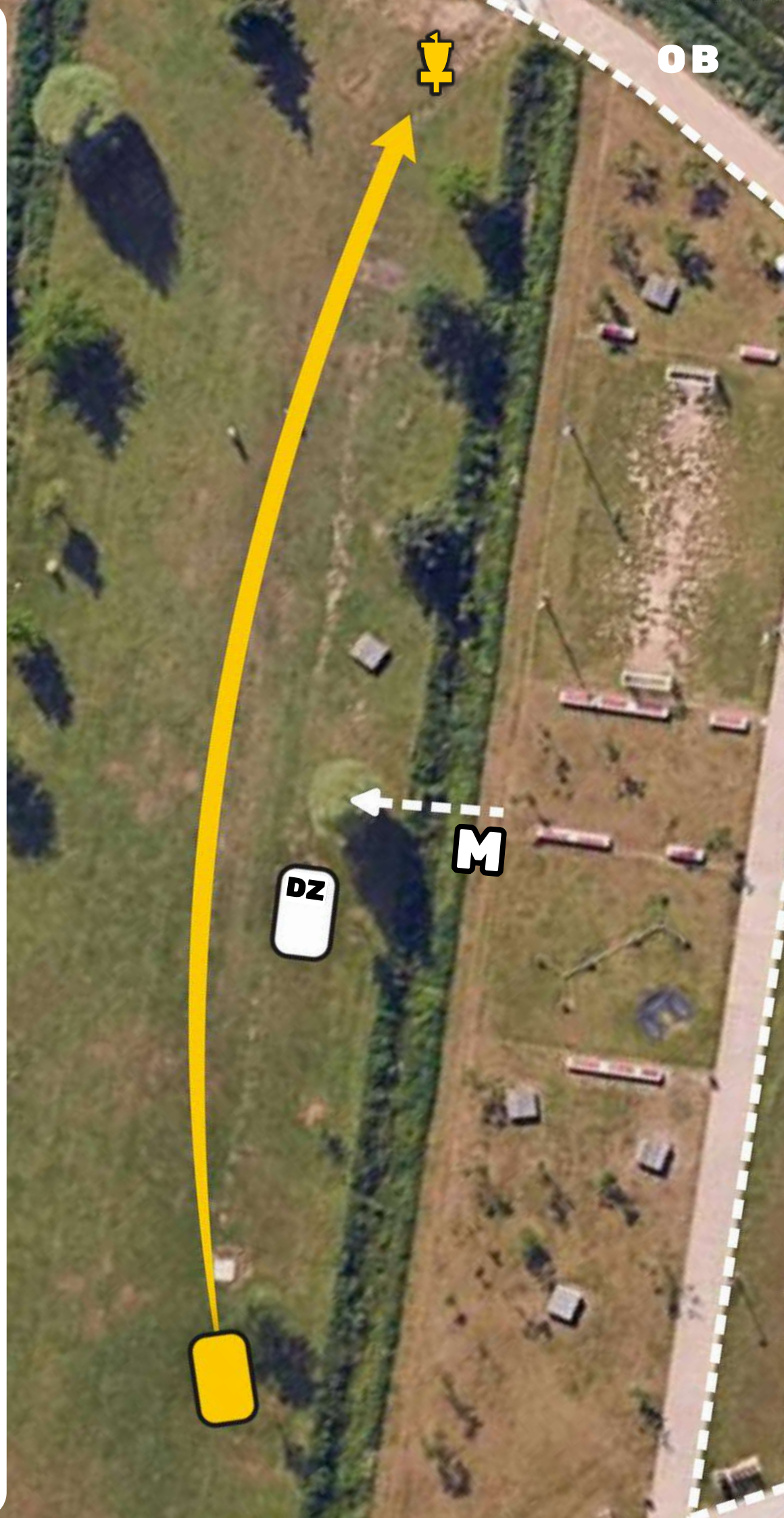
2

par 3

89m

OB long of the basket at the path and behind.

Mando left of the marked tree. DZ for the mando marked at a concrete patch.

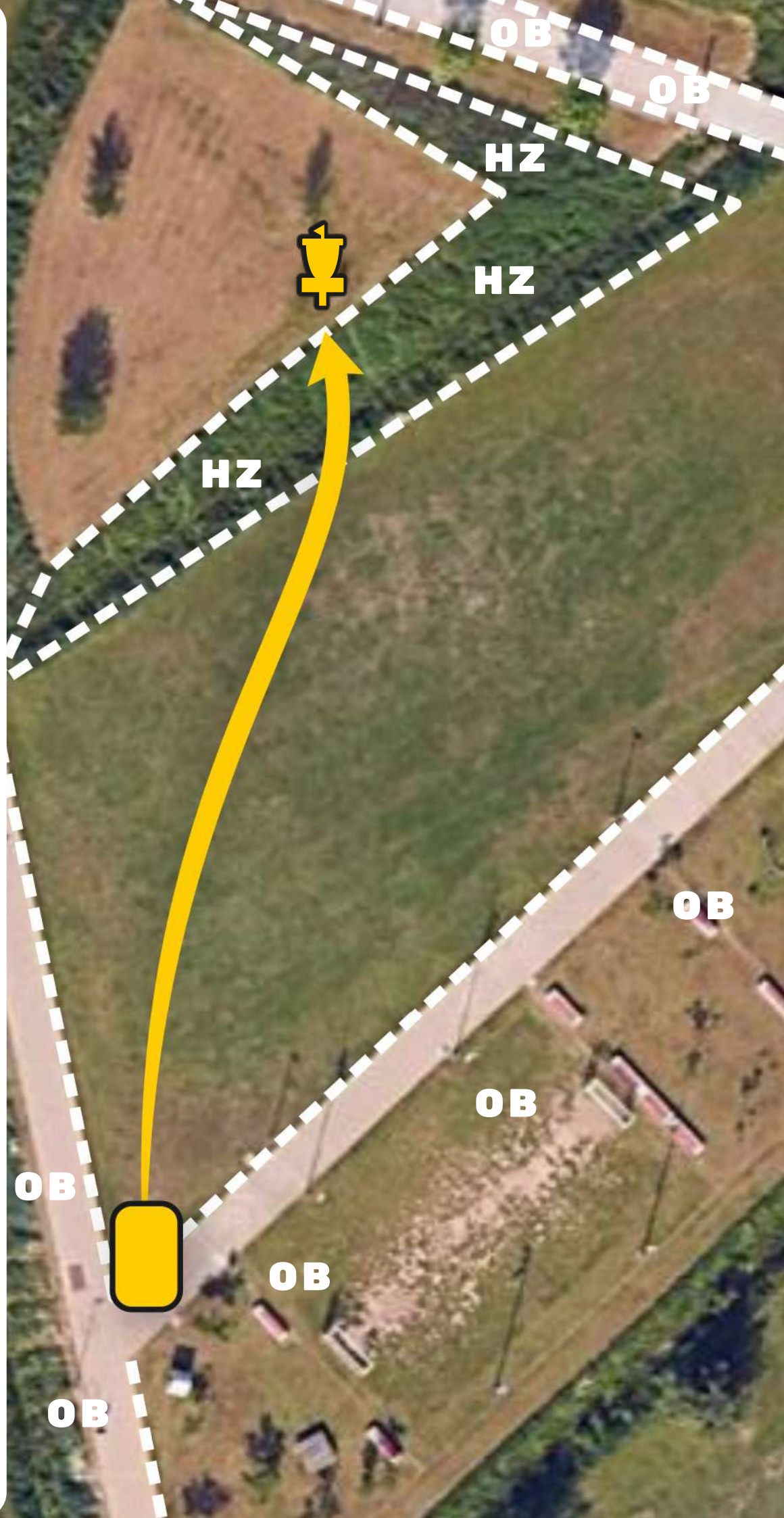


3

par 3

55m

HZ marked in the high grass on the slopes of the hill and in the ditch.

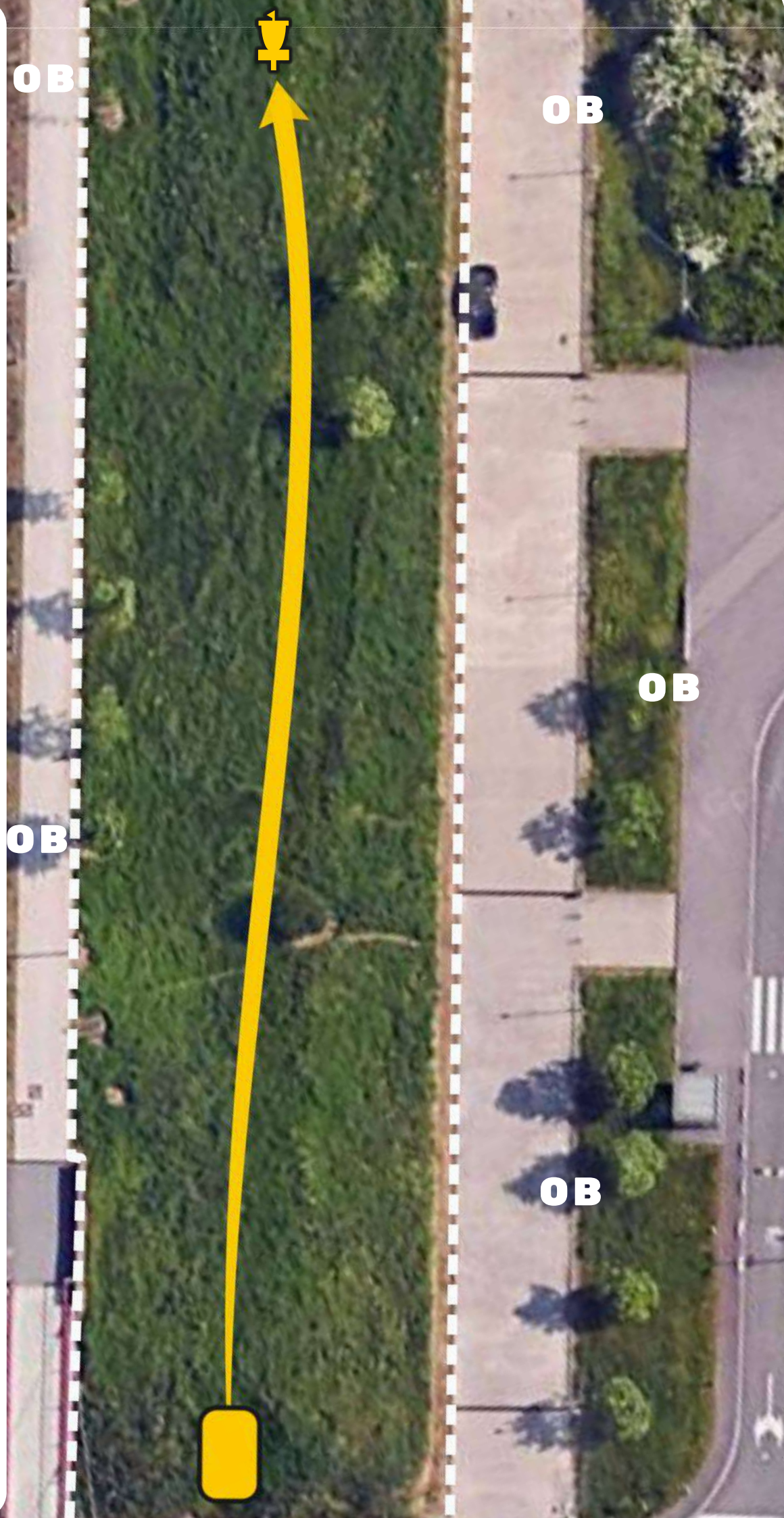


4

par 3

88m

OB on the paths
left, right and long
of the basket, and
behind the paths.



5

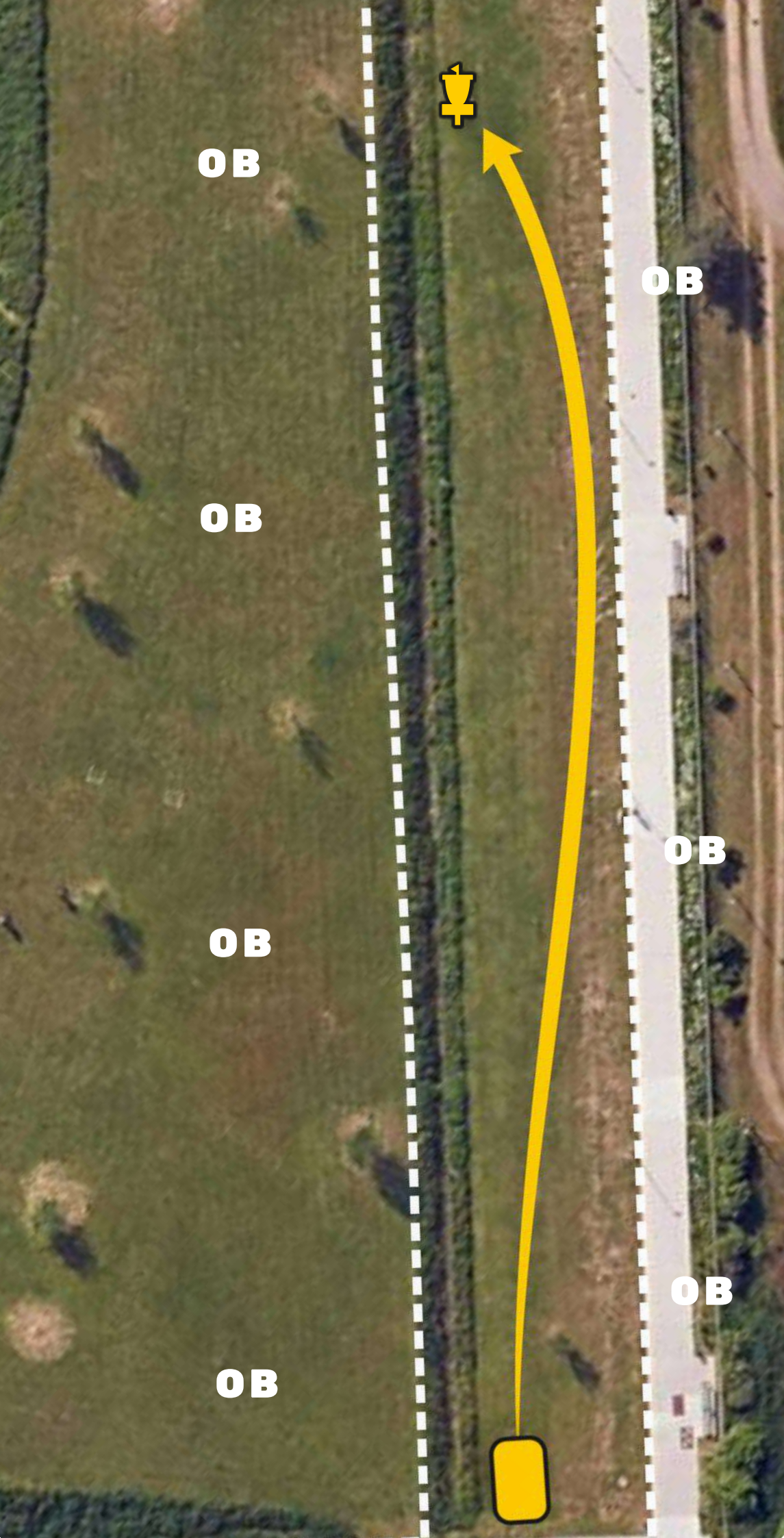
par 3

104m

OB on the path
right of the basket
and behind the
path.

OB left of the
basket at the edge
of high grass and
behind.





6

par 3

101m

OB left of the basket marked at the edge of high grass behind the ditch.

OB right of the basket on concrete path and behind.



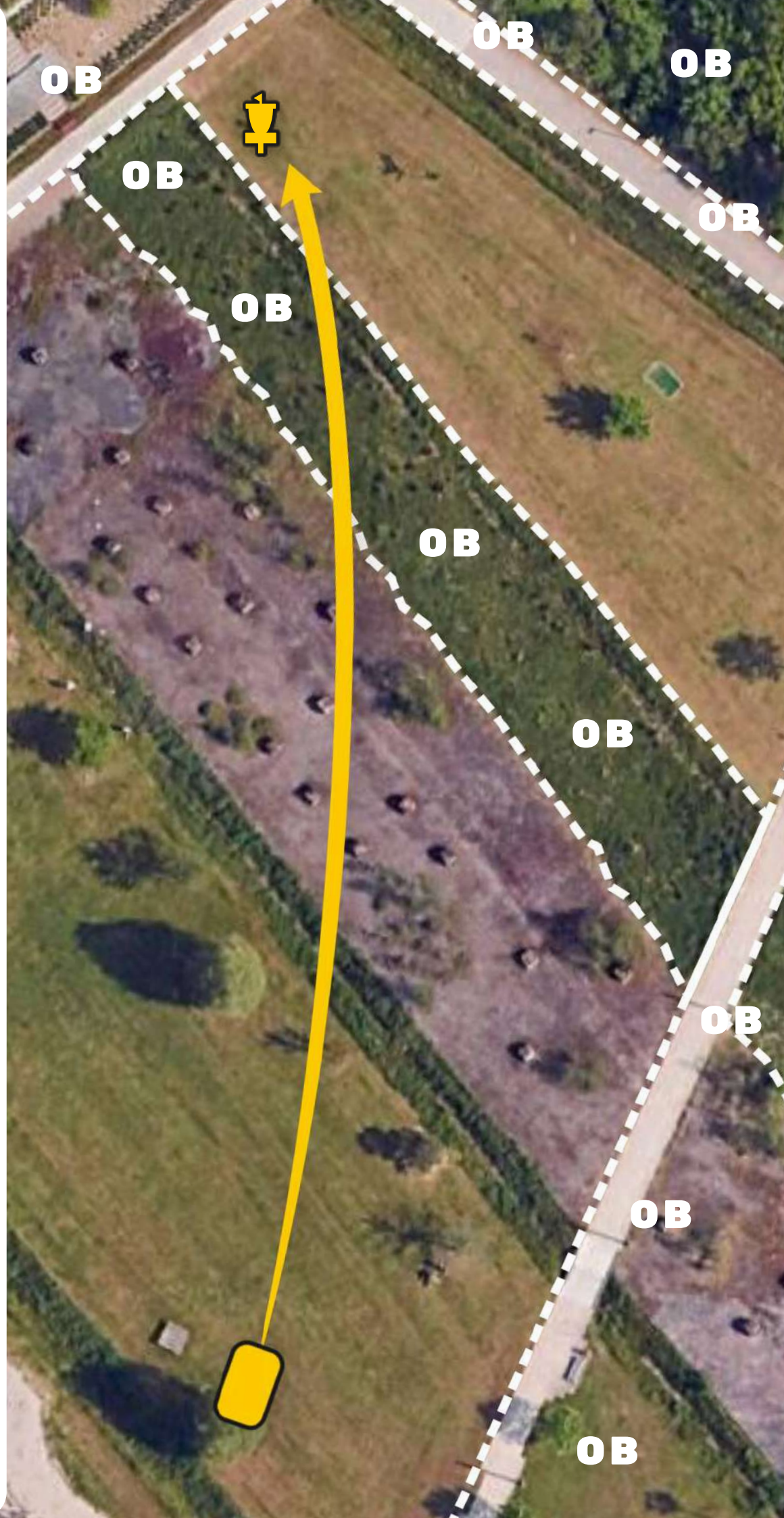
7

par 3

93m

OB long and left of the basket on concrete path and behind it.

OB in the high grass - between the edge of stone and marked line at the edge of high grass.



8

par 3

70m

OB long of the basket at the wall and behind it.

OB right of the basket on the concrete path and behind it.

OB in the ditch on the left.

After you finish this hole, please stay to spot for the next group.



9

par 3

123m

OB left and long of the basket at the edge of the hill (marked).

OB right of the basket in the high grass, on the stone, and beyond (marked).





Rue de la Poste, Belvaux (free)



Rue Wassertraap, Belvaux (free)



MEETING

Rue de l'Usine, Belvaux (free)



Lycee Bel-Val, Belvaux (paid)

