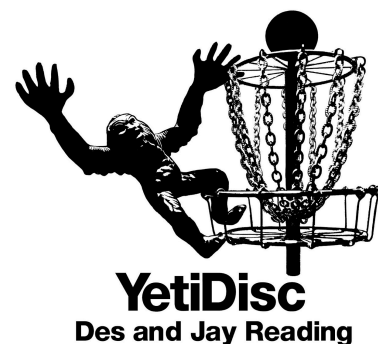
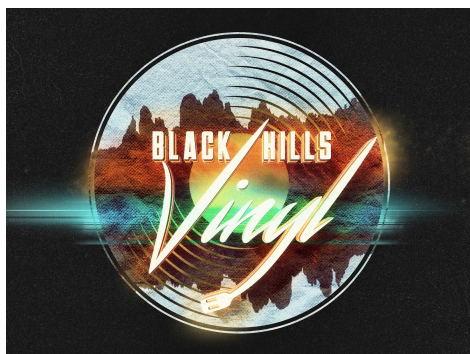


**The Mammoth, presented by Black Hills Vinyl**  
**Part of the West River Championship Series**  
Pageant Hill | Custer, SD



Hole #	Tee Pad	Basket	Distance	Par	Notes
1	Tee 1	Basket 1	312 ft	3	
2	Tee 2	Basket 2	288 ft	3	OB left and beyond the marked line.
3	Tee 3	Basket 3	272 ft	3	OB left and beyond the marked line.
3A	Temp 3A	Temp 3A	225 ft	3	OB gravel road/marked line and beyond.
4	Tee 4	Basket 4	438 ft	4	
5	Tee 5	Basket 5	260 ft	3	
6	Tee 6	Basket 6	232 ft	3	<b>DOUBLE MANDO</b> between the marked trees. If either mando is missed, proceed to DZ with a one stroke penalty. OB gravel path and beyond.
7	Tee 7	Basket 7	343 ft	3	
7A	Temp 7A	Temp 7A	286 ft	3	<b>DOUBLE MANDO</b> between the marked trees. If either mando is missed, proceed to the DZ with a one stroke penalty. OB gravel road and beyond.
8	Tee 8	Basket 8	330 ft	3	<b>TEE FROM HAZARD.</b> Hazard on gravel path or short of gravel path.
9	Tee 9	Basket 9	150 ft	3	<b>ISLAND HOLE.</b> <b>TEE FROM HAZARD.</b> Hazard on and right of gravel path. Hazard on and beyond gravel road.
9A	Temp 9A	Temp 9A	368 ft	3	<b>TEE FROM OB.</b> OB if on gravel road or short of gravel road. If you do not establish in bounds, retee with a one stroke penalty.
9B	Temp 9B	Temp 9B	253 ft	3	<b>DOUBLE MANDO</b> between the marked trees. If either mando is missed, proceed to the DZ with a one stroke penalty. OB gravel road and beyond.
10	Temp 10	Basket 10	317 ft	3	<b>MANDO LEFT</b> of the marked tree. If missed, proceed to the DZ with a one stroke penalty.
11	Tee 11	Basket 11	330 ft	3	
12	Tee 12	Temp 12	211 ft	3	OB gravel road and beyond.

Hole #	Tee Pad	Basket	Distance	Par	Notes
12A	Temp 12A	Basket 12	205 ft	3	<b>TEE FROM OB.</b> OB gravel road and short of gravel road.
13	Tee 13	Basket 13	254 ft	3	<b>TEE FROM OB.</b> OB gravel road and short of gravel road.
14	Tee 14	Basket 14	266 ft	3	<b>TEE FROM OB.</b> OB gravel road and short of gravel road.
14A	Temp 14A	Temp 14A	432 ft	4	<b>MANDO RIGHT</b> of the marked tree. If the mando is missed, proceed to the DZ with a one stroke penalty. OB gravel road and beyond.
14B	Temp 14B	Temp 14B	182 ft	3	<b>TEE FROM HAZARD.</b> Hazard on the gravel road and short of the gravel road. Do not tee if anyone is on hole 15's tee pad.
15	Tee 15	Basket 15	372 ft	3	
16	Tee 16	Basket 16	459 ft	3	
17	Tee 17	Basket 17	163 ft	3	
18	Tee 18	Basket 18	515 ft	3	
18A	Temp 18A	Temp 18A	793 ft	4	<b>RIVER-ISLAND HOLE.</b> OB marked line and beyond. You can lay up to the first marked line.
18B	Temp 18B	Temp 18B	889 ft	4	<b>MANDO LEFT</b> of both power line/light poles. If either mando is missed, proceed to the closest DZ of the missed mando with a one stroke penalty. OB pavement and beyond.
18C	Temp 18C	Temp 18C	377 ft	3	
		<b>TOTALS</b>	9519 ft	88	



## Schedule of Events

Tuesday, September 2nd - Dubs w/ YetiDisc

- Meet & Greet with World Disc Golf Hall of Famers
  - Des & Jay Yeti Reading
- Ring of Fire Throw Off
- CTP Prizes
- Doubles replace the Handicap League this week.

Friday, September 5th - Random Dubs

- 5:30 pm @ Pageant Hill in Custer, SD

Saturday, September 6th - Day 1 - Pageant Hill

- 8:00 am - Player Check-In & Tee Times
- 6:30 pm Player Party @ Cohort Black Hills
  - 23845 US-385, Hill City, SD 57745
  - Games, YetiDisc Swag, & more!

Sunday, September 7th - Day 2 - Spearfish Canyon

- 8:00 am - Player Check-In & Tee Times
- Awards as divisions finish their rounds.



---

## 2025 Sponsors

Hosting events wouldn't be possible without our sponsors.

- [Dizzy Robot Cleaning Services](#)
- [Black Hills Vinyl](#)
- [Hart Ranch Camping Resort](#)
- [Pokorny Chiropractic](#)
- [Play It Again Sports - Rapid City](#)
- [Hyzer Dyes](#)
- [Chump Chalk, LTD.](#)
- [Zymurcracy Beer Company](#)
- [Copy Country](#)

---

## Emergency Contacts

In PDGA Live, click the three dot vertical option in the top left to access the TD Cell Phone Number.



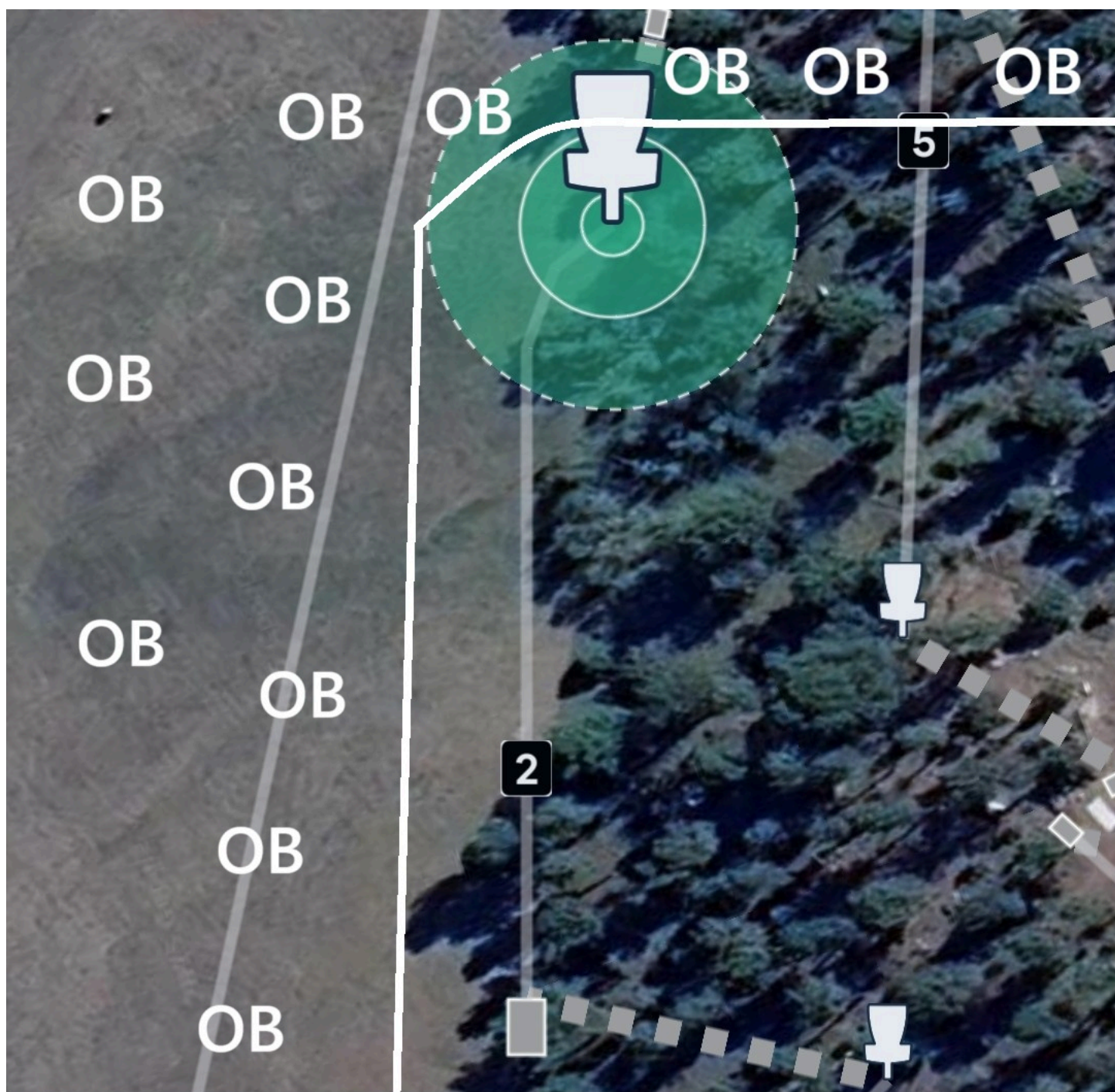


**Hole 1**

**312 ft**

**Par 3**





**Hole 2**

288 ft

**Par 3**



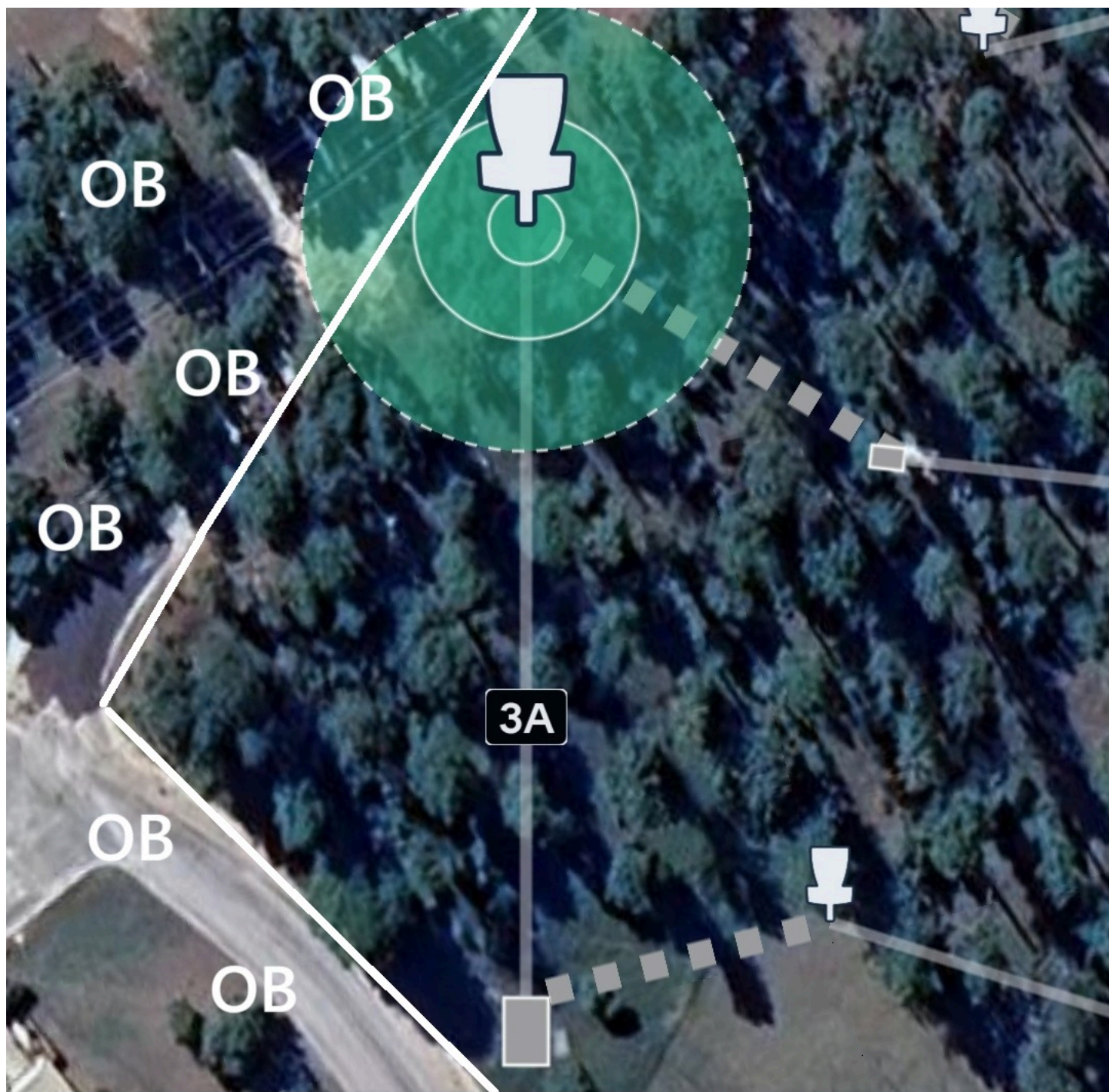


**Hole 3**

272 ft

**Par 3**



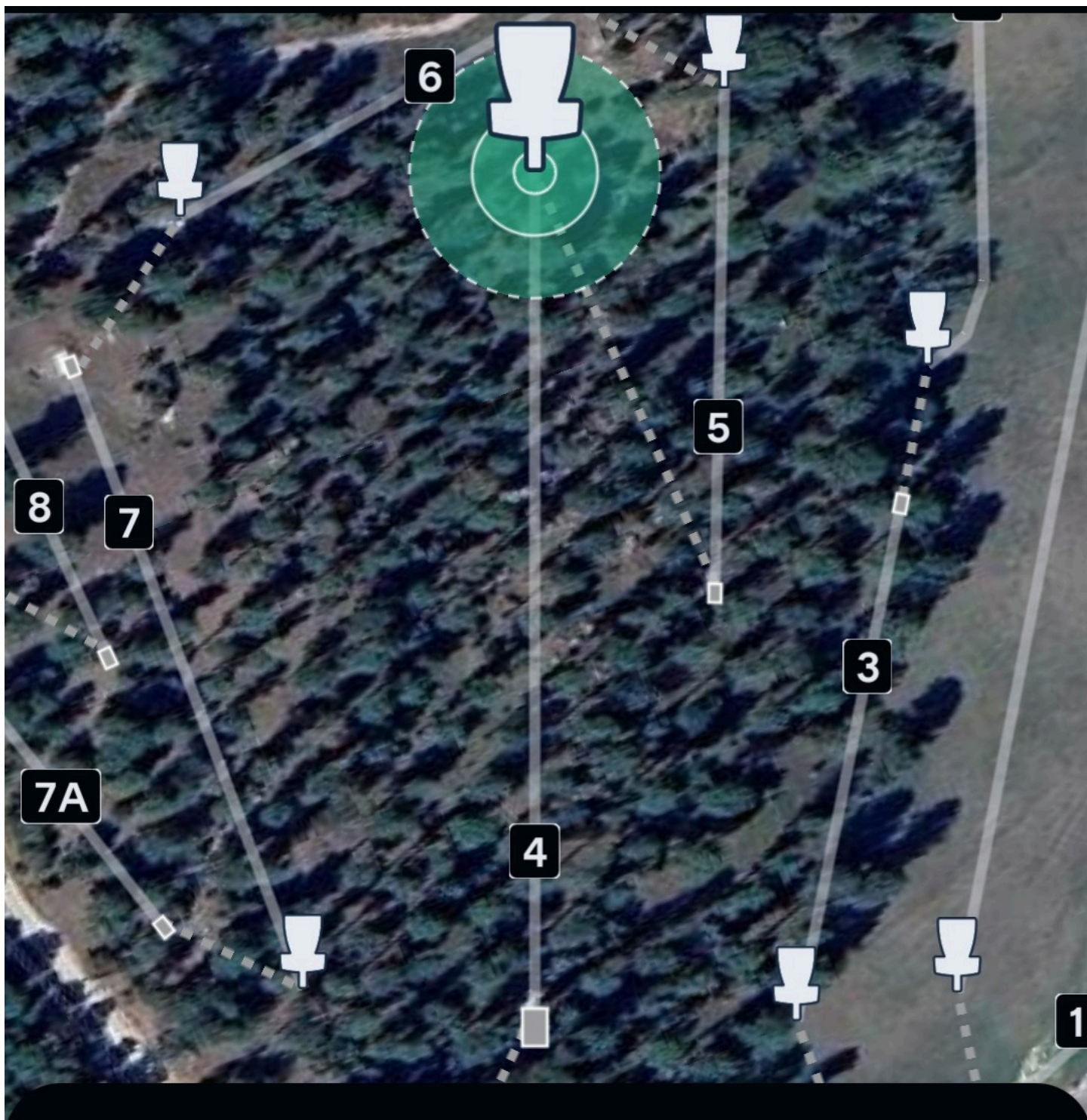


**Hole 3A**

225 ft

**Par 3**





**Hole 4**

438 ft

**Par 4**



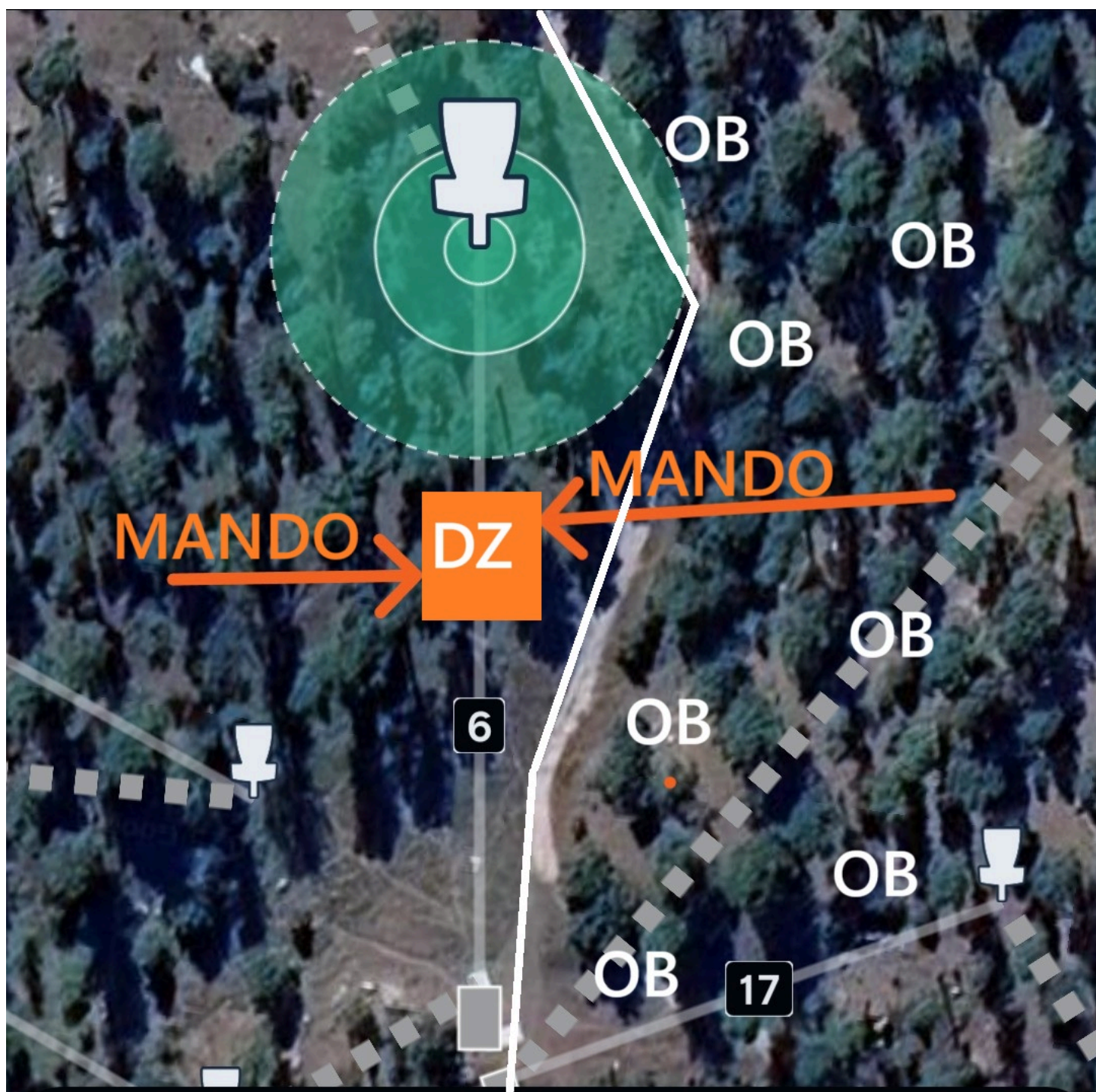


**Hole 5**

260 ft

**Par 3**





**Hole 6**

232 ft

**Par 3**



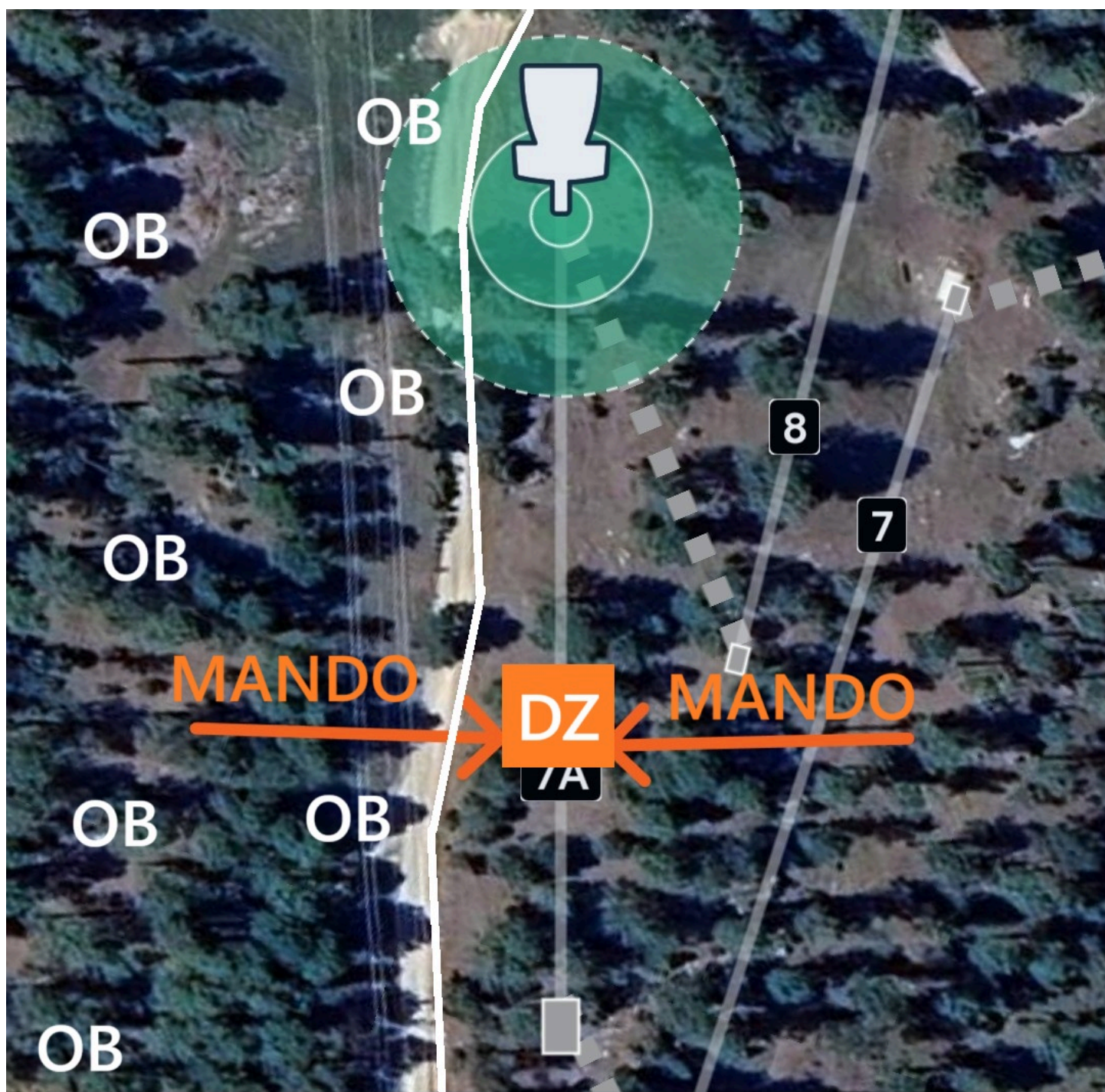


**Hole 7**

**343 ft**

**Par 3**



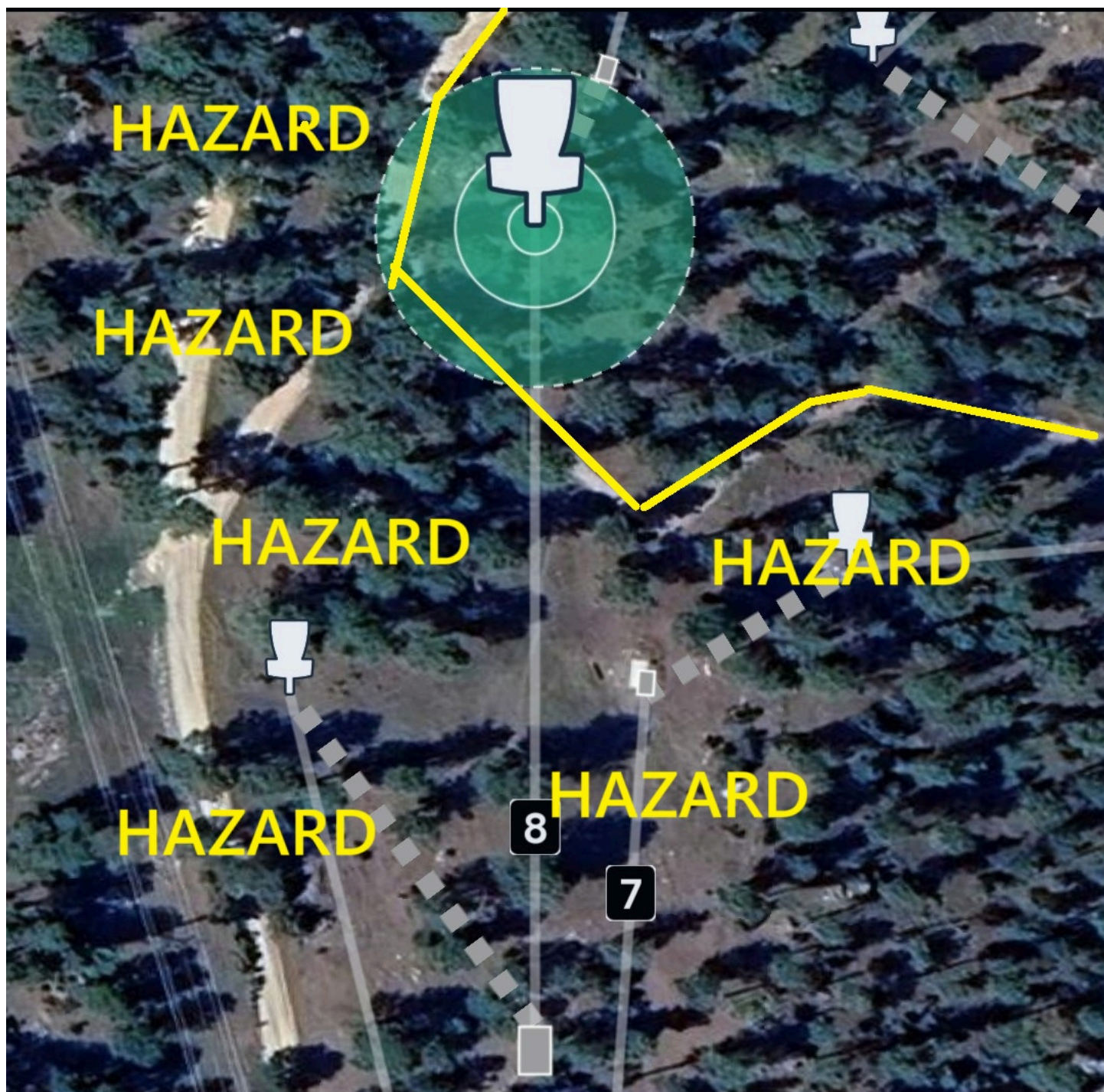


**Hole 7A**

286 ft

**Par 3**



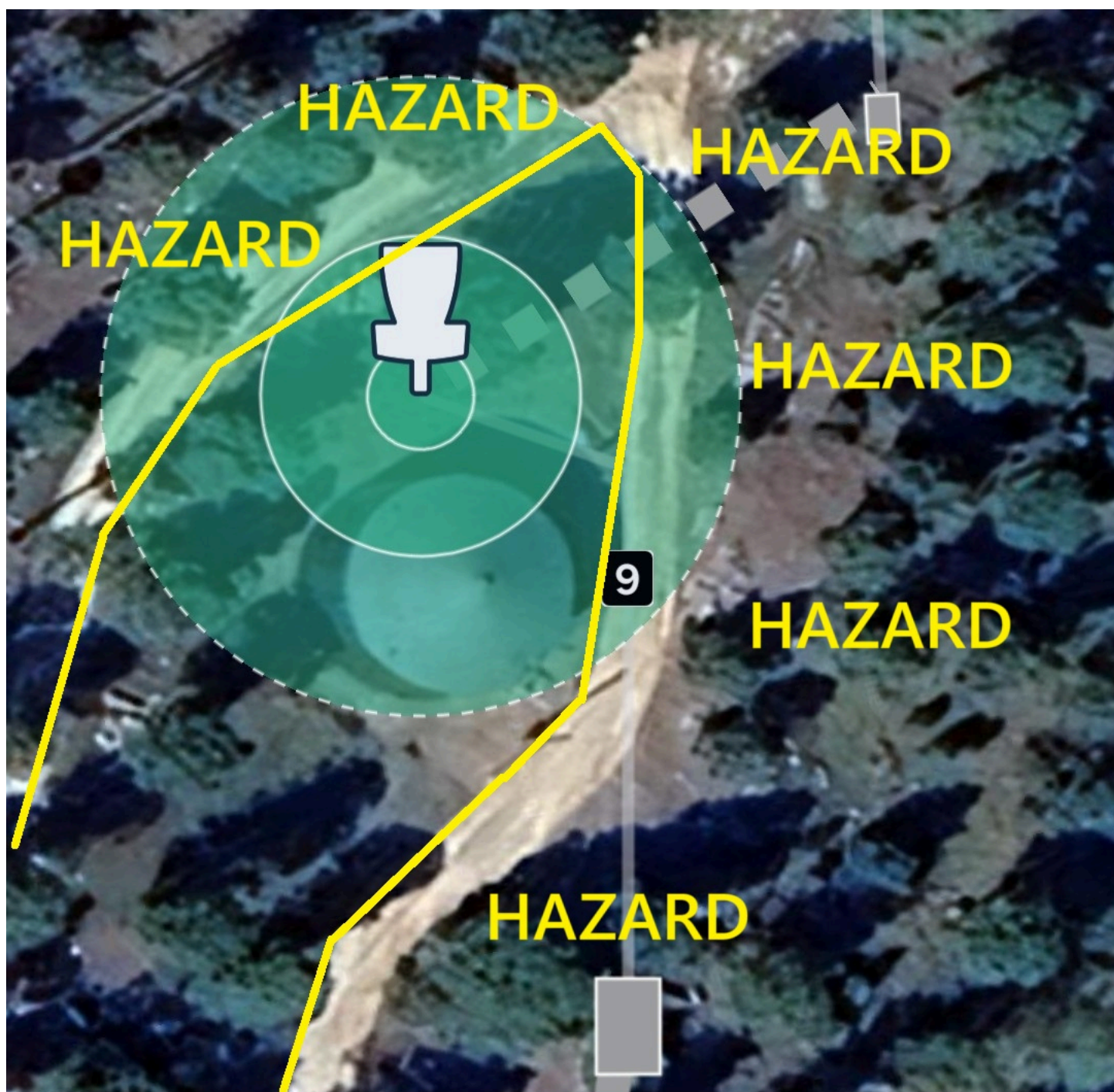


**Hole 8**

330 ft

**Par 3**



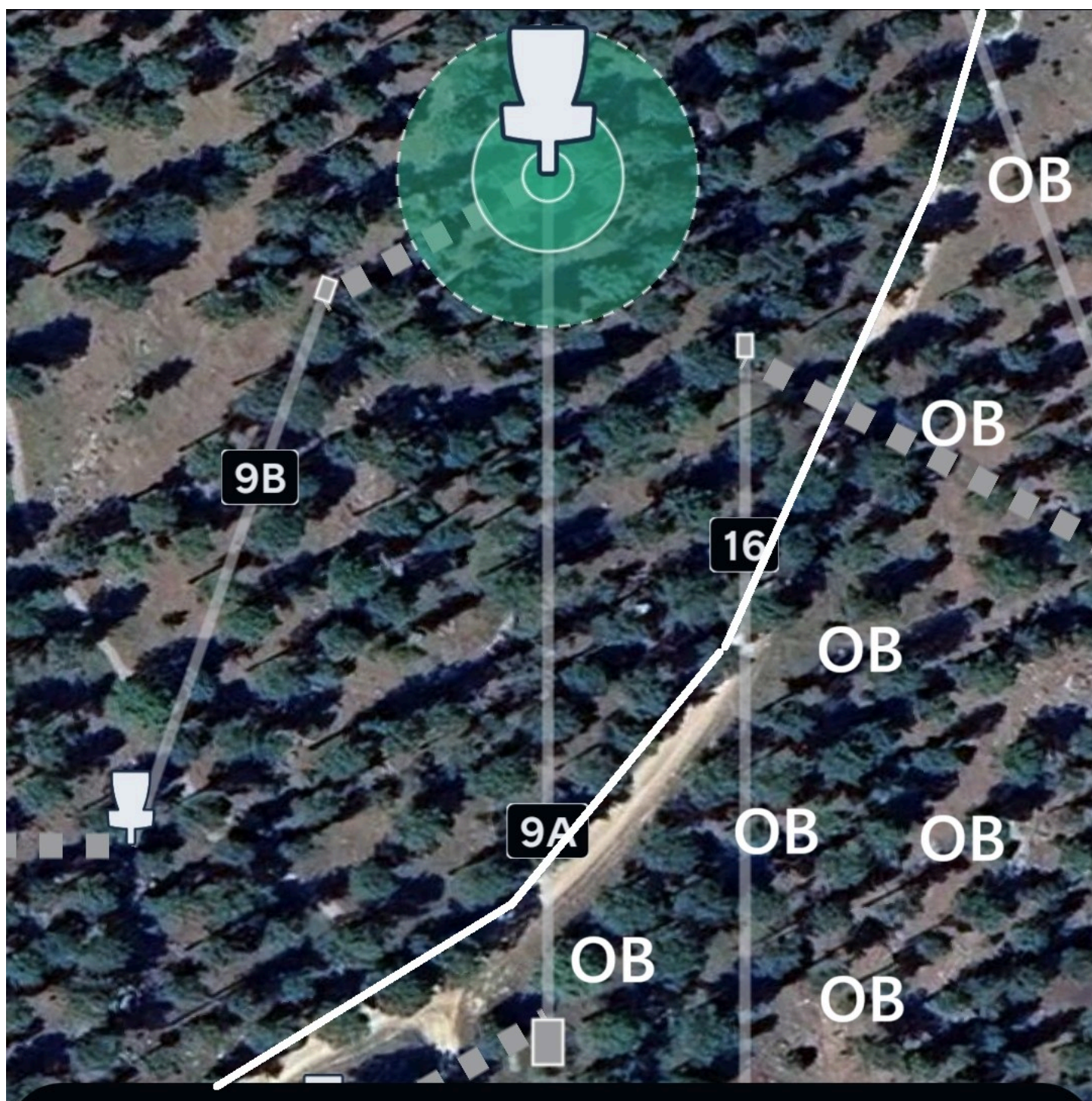


**Hole 9**

150 ft

**Par 3**





**Hole 9A**

**Par 3**

368 ft



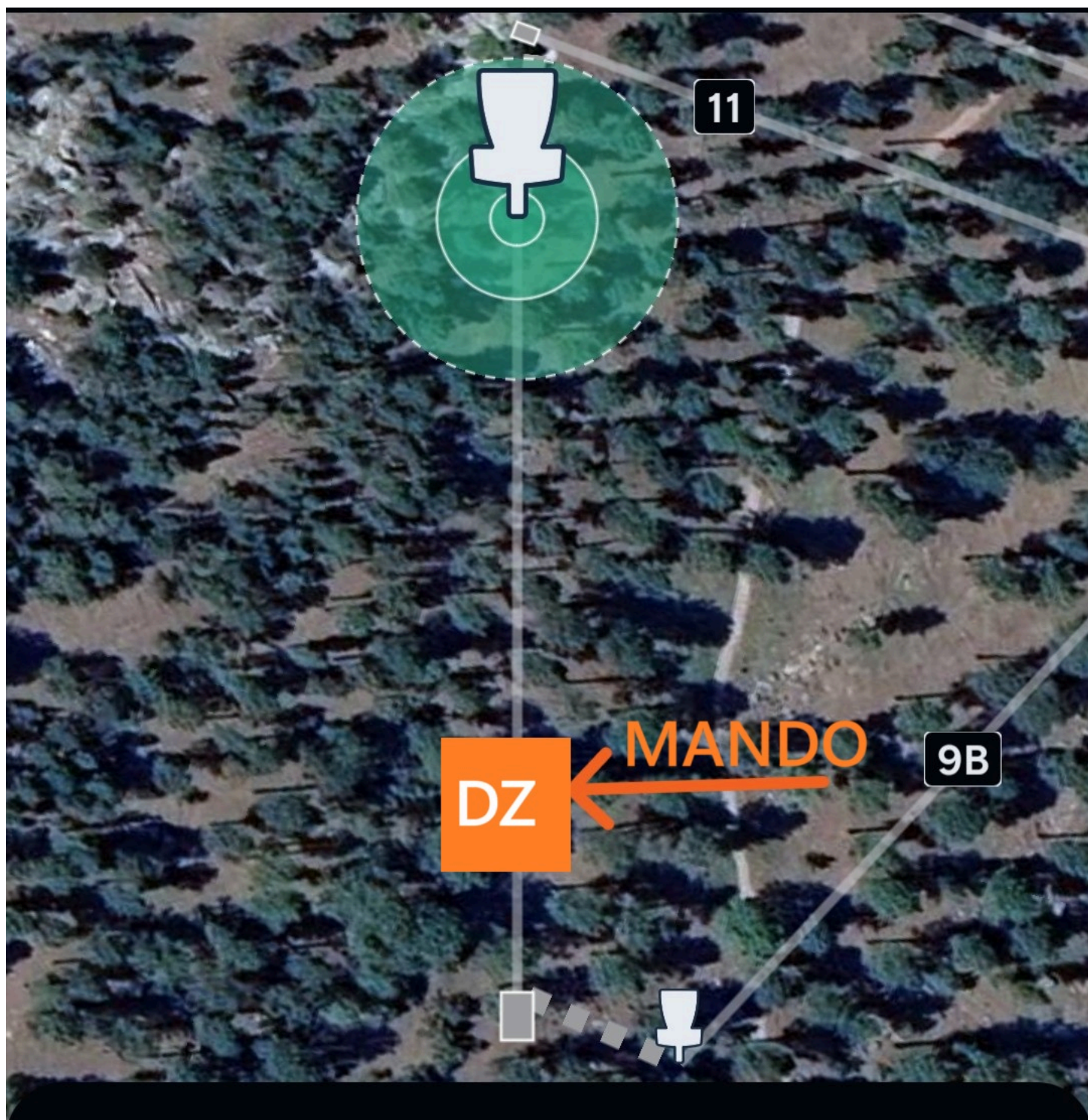


**Hole 9B**

253 ft

**Par 3**





**Hole 10**

**Par 3**

**317 ft**





**Hole 11**

**330 ft**

**Par 3**





**Hole 12**

**211 ft**

**Par 3**



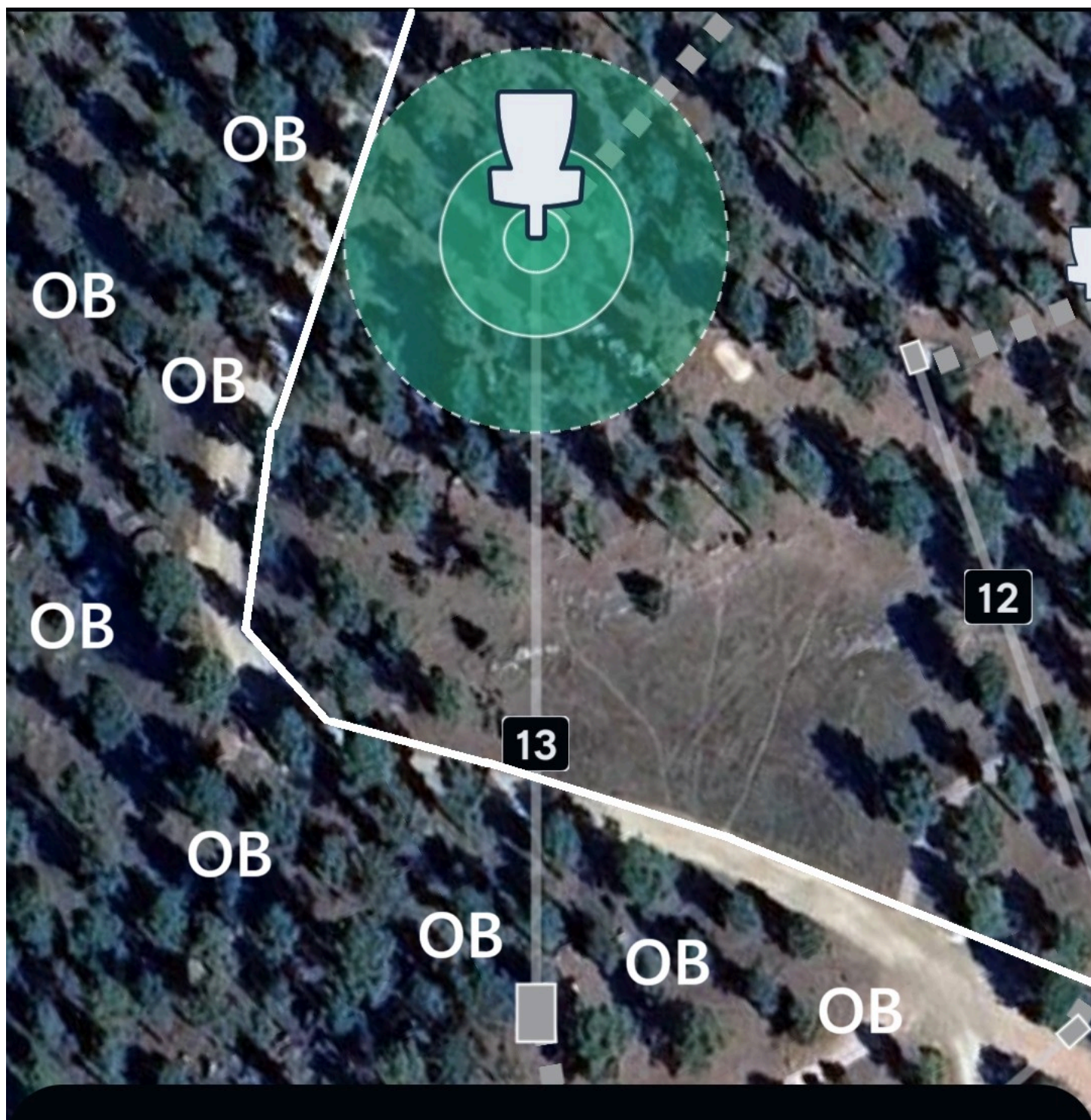


**Hole 12A**

205 ft

**Par 3**





**Hole 13**

**254 ft**

**Par 3**





**Hole 14**

266 ft

**Par 3**



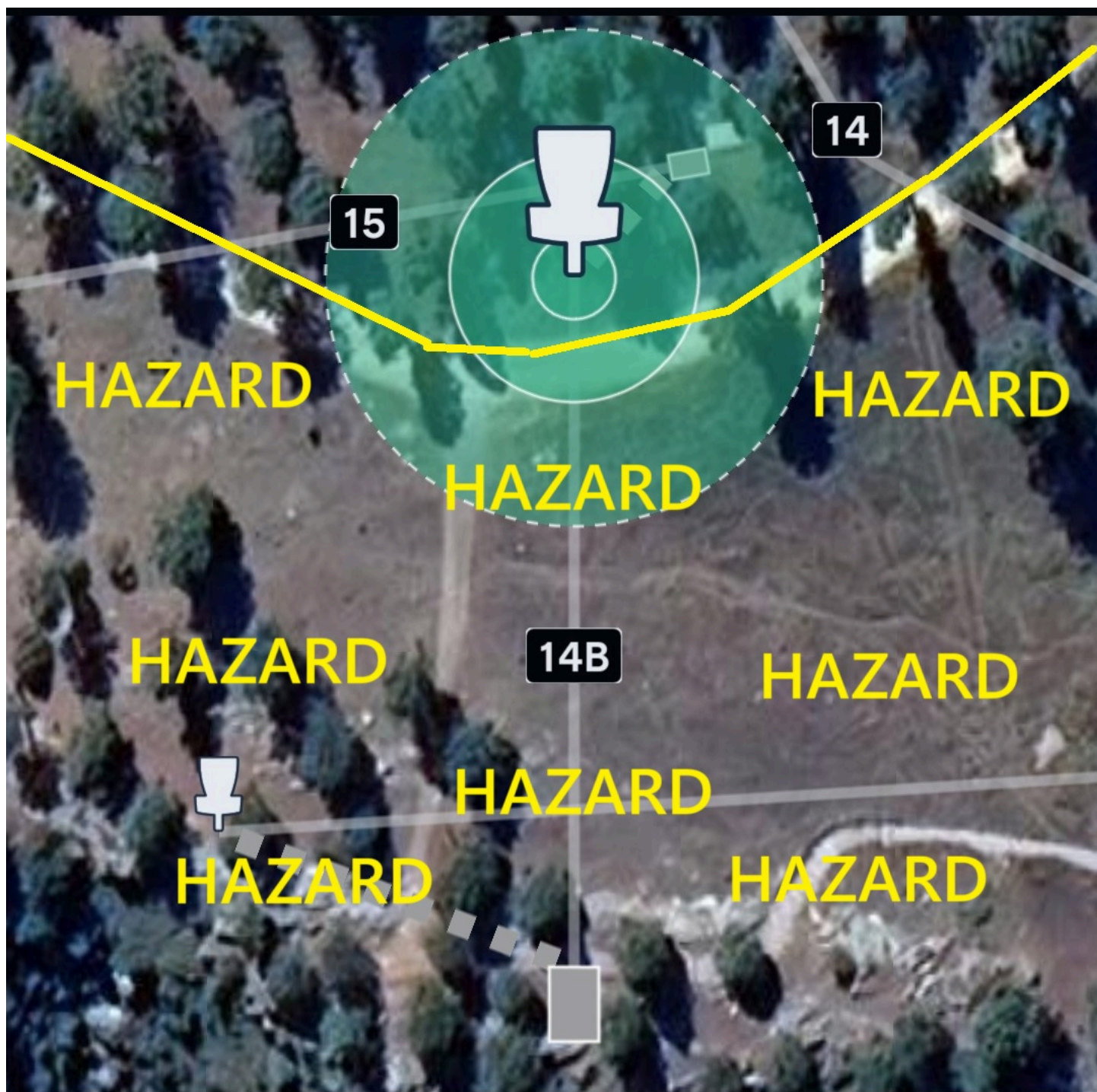


**Hole 14A**

432 ft

**Par 4**





**Hole 14B**

**Par 3**

182 ft





**Hole 15**

**372 ft**

**Par 3**





**Hole 16**

459 ft

**Par 3**





**Hole 17**

163 ft

**Par 3**





**Hole 18**

515 ft

**Par 3**





**Hole 18A**

793 ft

**Par 4**



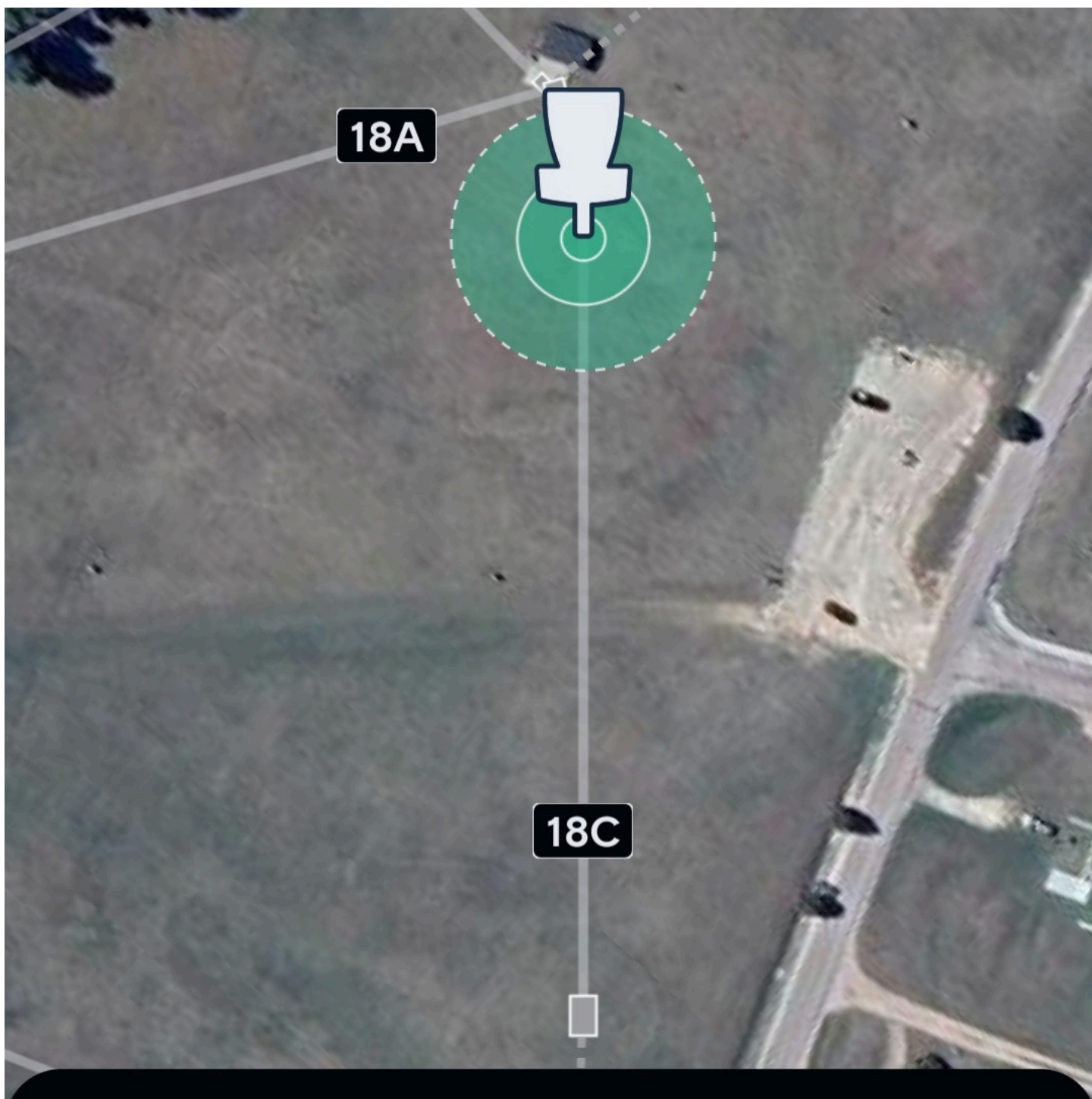


**Hole 18B**

**Par 4**

889 ft





**Hole 18C**

**377 ft**

**Par 3**