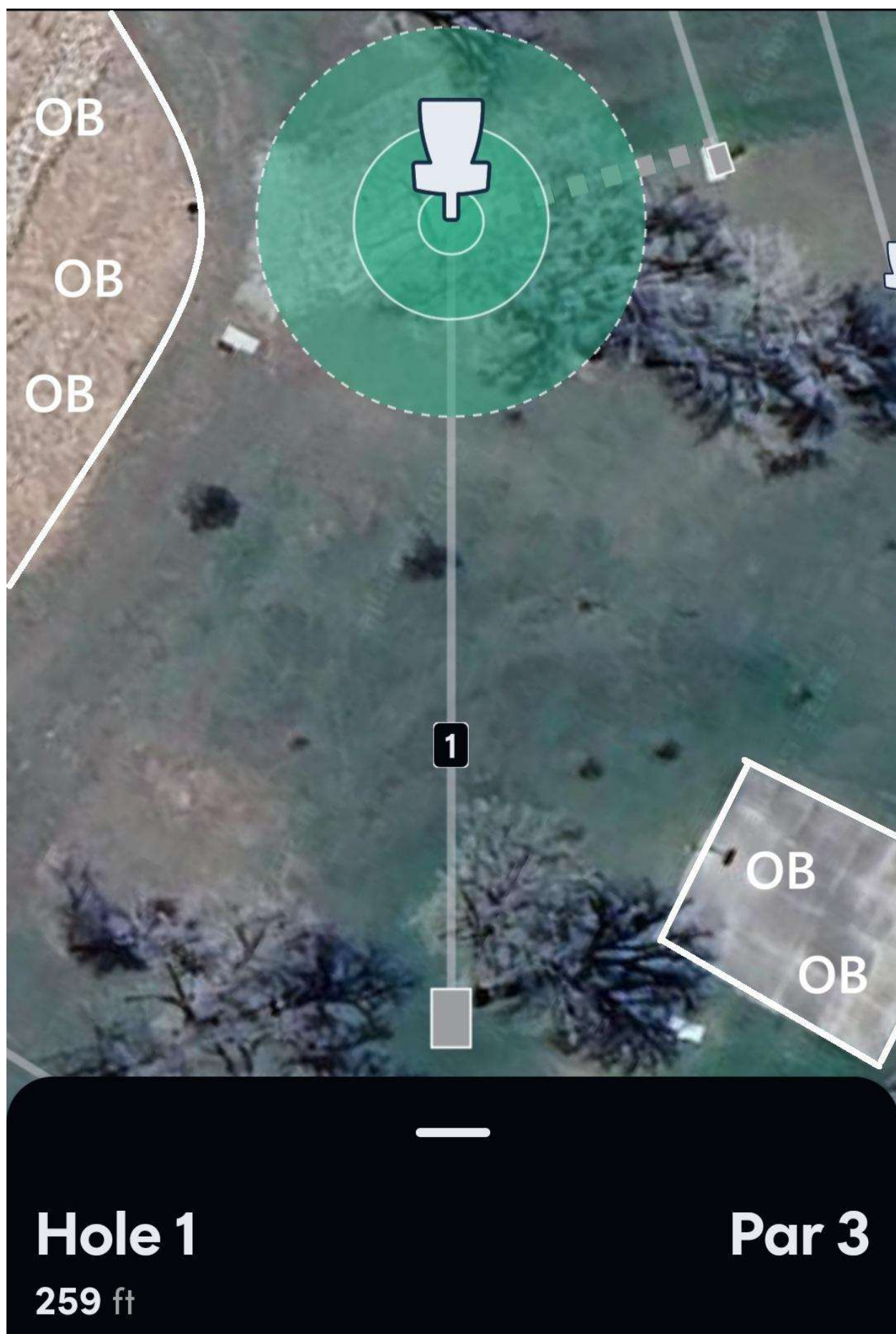


## Omaha Course Notes

Hole	Tee Pad	Basket	Distance	Par	Notes
1	Temp 1	Basket 4	259	3	OB drainage pond (and beyond deep) as indicated by marked line. OB basketball court.
2	Tee 5	Basket 5	305	3	OB fence and beyond.
3	Tee 6	Basket 8	528	4	OB tall grass and beyond, and the marked line around the drainage pond. If in the drainage pond, throw from last place in bounds with one stroke penalty.
4	Tee 9	Basket 9	358	3	OB road and beyond right. OB parking lot and beyond.
5	Temp 5	Temp 5	538	4	<b>DOUBLE MANDO</b> right of the first marked tree and left of the second marked tree. If the mando is missed, proceed to DZ closest to the MANDO missed with a one stroke penalty. OB sidewalk and road and beyond
6	Temp 6	Temp 6	510	4	<b>DOUBLE MANDO</b> between marked trees – if missed, take from marked DZ with stroke penalty. OB road (including curb) and beyond
7	Temp 7	Temp 7	293	3	OB road (including curb) and beyond
8	Temp 8	Temp 8	224	3	<b>ISLAND HOLE</b> . If the island is missed on tee shot, proceed to the DZ with a one stroke penalty. Island is defined by the three sidewalks, disc must be across the sidewalk.
9	Temp 9	Temp 9	312	3	<b>RIVER HOLE</b> . River between sidewalk and drainage creek is OB. Front of all tall grass all the way to across path is OB. All of sidewalk is OB. OB Creek and beyond deep.
10	Temp 10	Temp 10	273	3	OB sidewalk and beyond right. OB sidewalk and beyond.
11	Temp 11	Temp 11	350	3	<b>TEE FROM OB</b> . <b>MANDO RIGHT</b> of marked tree. If mando is missed, proceed to DZ2 with a one stroke penalty. OB sidewalk and short. If you do not cross the sidewalk, you have not established in bounds. OB marked line and beyond. If you land OB or miss the mando, proceed with one stroke penalty to the DZ.
12	Temp 12	Temp 12	336	3	OB tall grass and beyond left. All OB from tee proceed to DZ with a stroke penalty and normal OB rules following.

Hole	Tee Pad	Basket	Distance	Par	Notes
13	Temp 13	Temp 13	336	3	<b>ISLAND HOLE</b> . Island is created by the far side of the sidewalk and marked line that loops around the basket. Hazard sidewalk and short. OB beyond the sidewalk and marked line.
14	Temp 14	Temp 14	280	3	<b>TEE FROM OB</b> . If you do not establish in bounds, retee with a one stroke penalty. Normal OB rules from there. You can layup short right from the tee. OB line marking "pond" short. OB fence line deep. OB sidewalk left. OB railroad tracks right.
15	Temp 15	Temp 15	409	4	<b>TEE FROM OB</b> . If you do not establish in bounds, retee with one stroke penalty. OB outside of soccer field fence (short, right and deep).
16	Temp 16	Basket 1	225	3	<b>TEE FROM OB</b> . If you don't establish in bounds, retee with one stroke penalty. OB fence line short, disc must cross fence to be in bounds. <b>MANDO RIGHT</b> of marked pole (standard course mando) – if missed, take from DZ with one stroke penalty.
17	Tee 3	Basket 3	326	3	
18	Temp 18	Basket 7	244	3	<b>DOUBLE MANDO</b> between marked trees. If missed, proceed to DZ with one stroke penalty. OB sidewalk and beyond.
		<b>Total</b>	6079 ft	59	

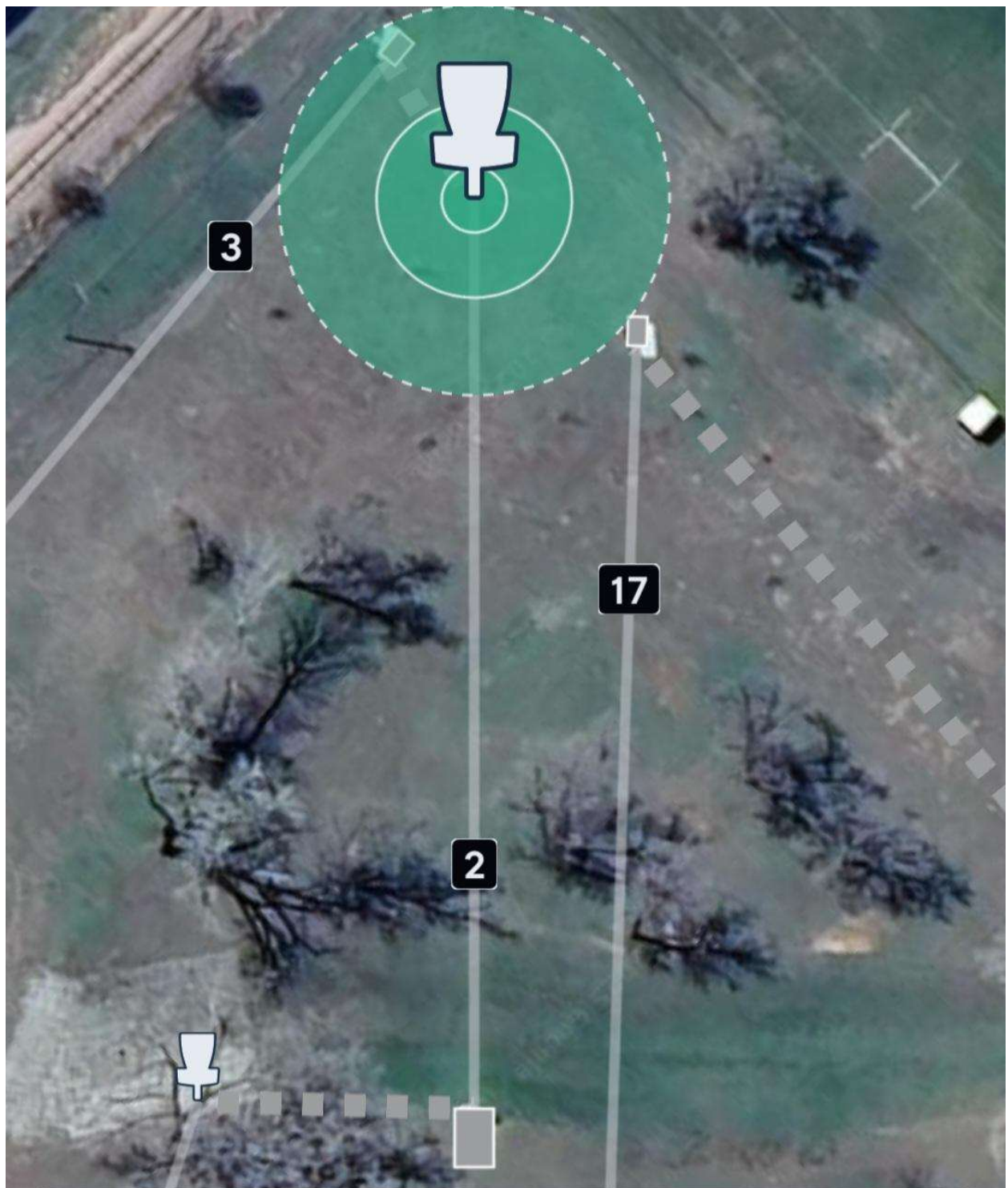




**Hole 1**

**259 ft**

**Par 3**

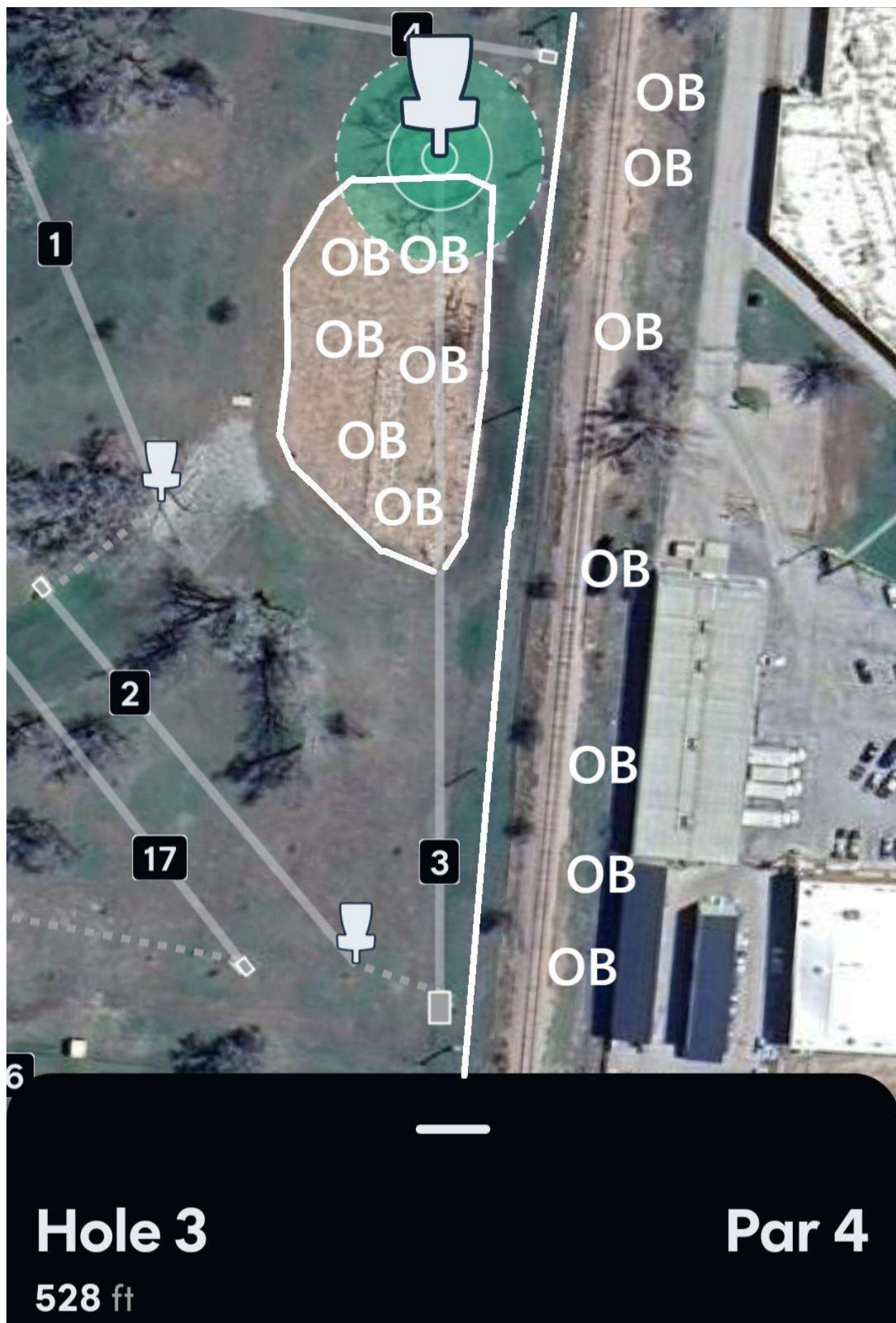


**Hole 2**

305 ft

**Par 3**







**Hole 4**

**358 ft**

**Par 3**





**Hole 5**

538 ft

**Par 4**

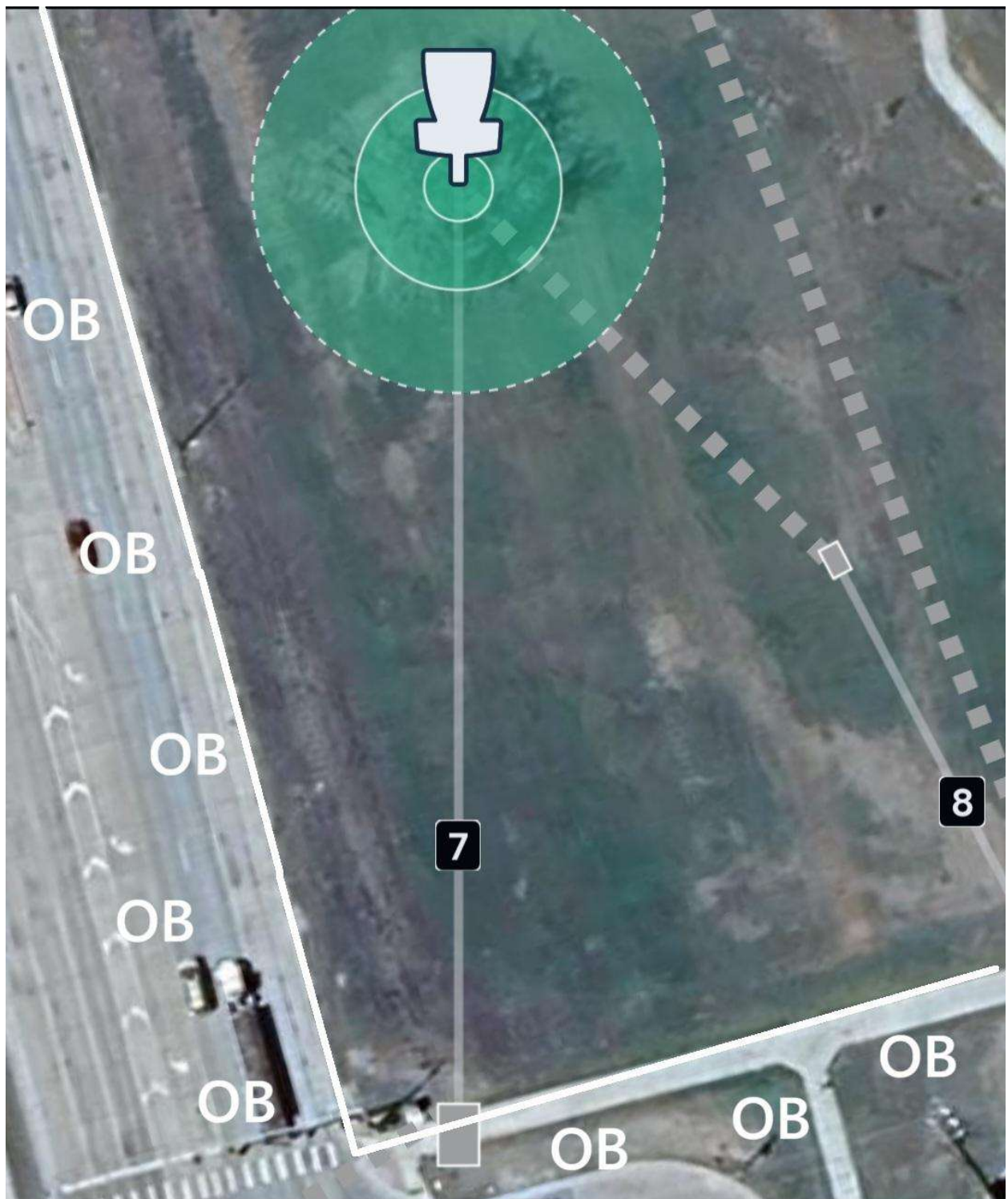


**Hole 6**

462 ft

**Par 4**

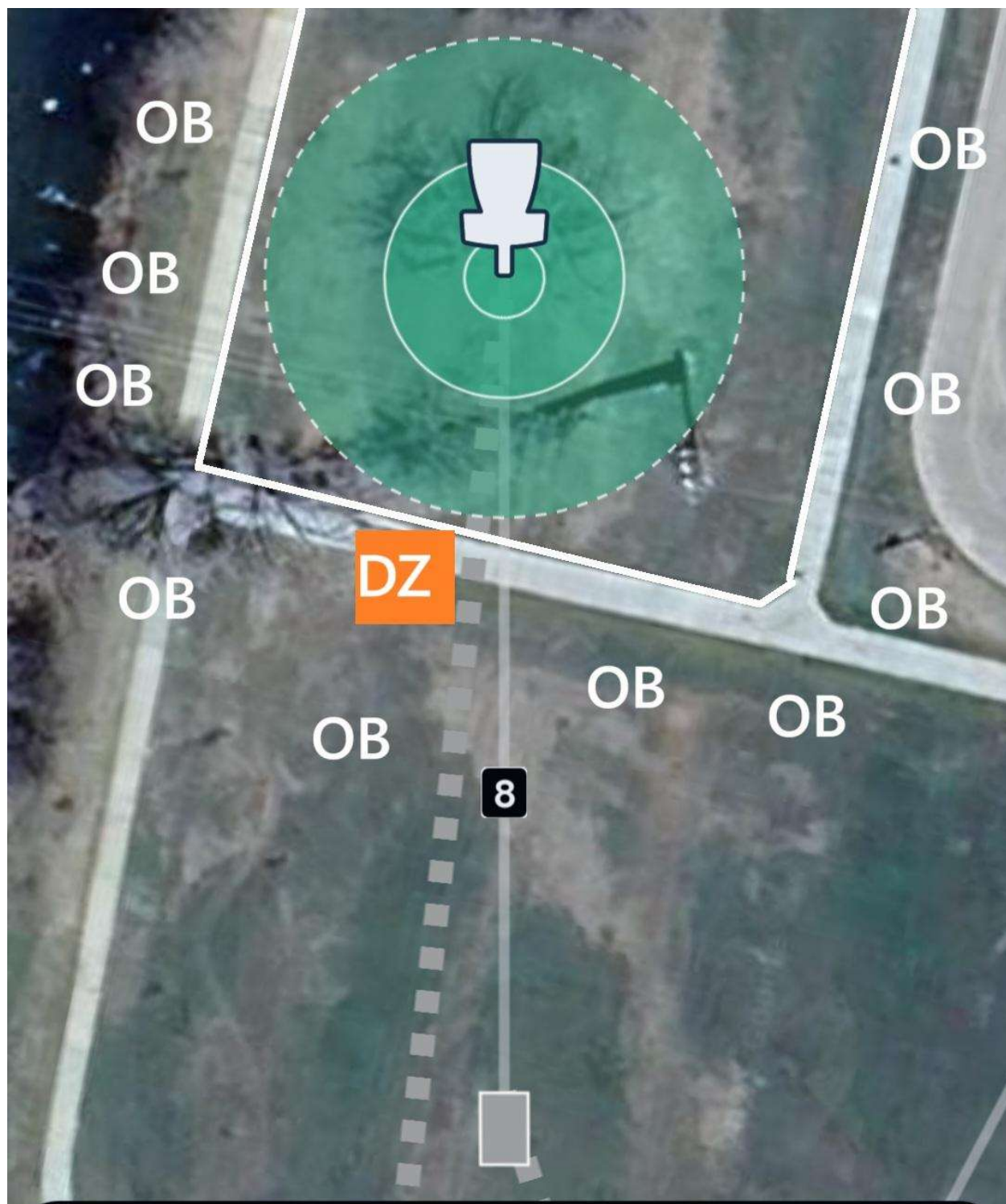




**Hole 7**

293 ft

**Par 3**

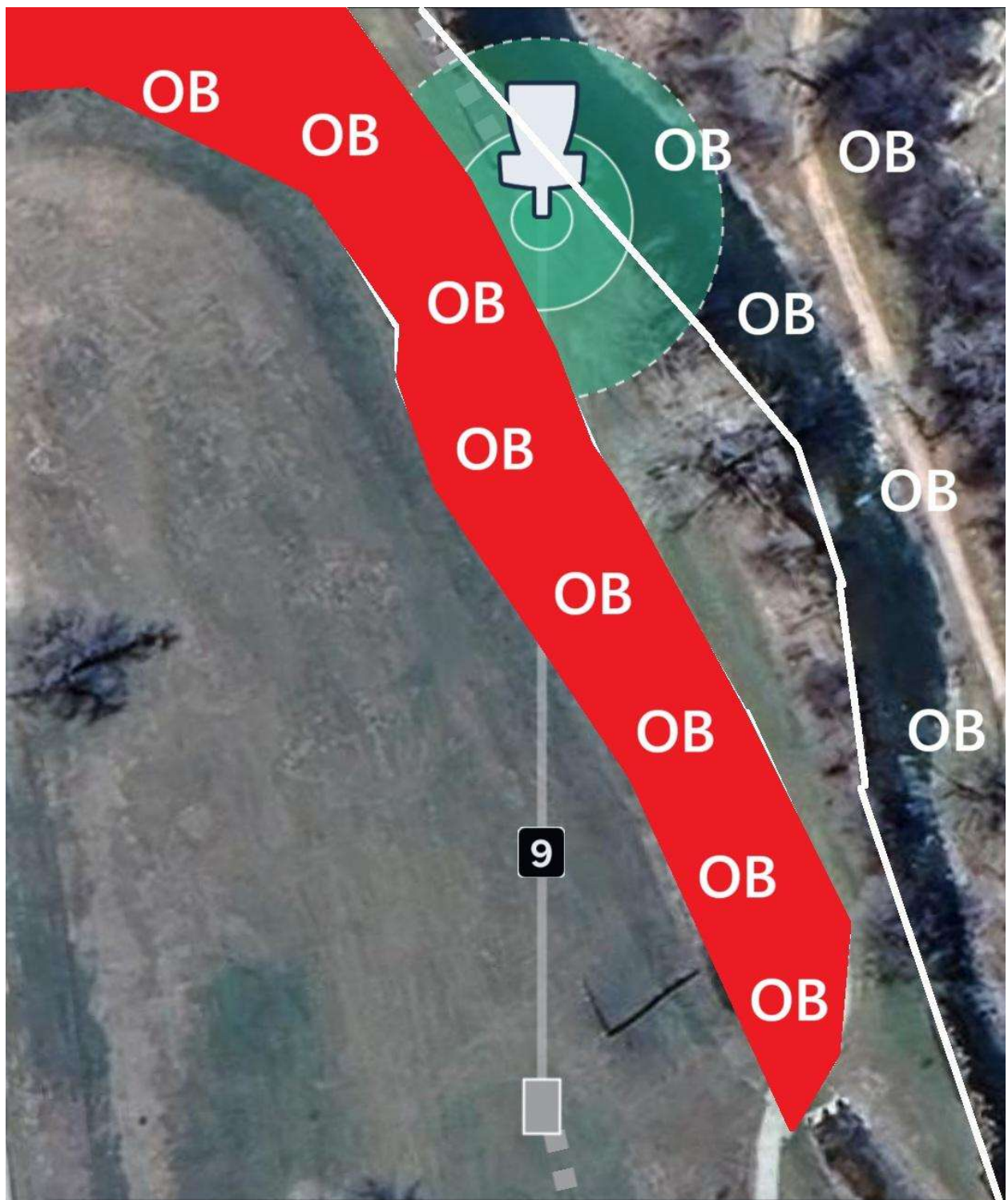


**Hole 8**

224 ft

**Par 3**





**Hole 9**

312 ft

**Par 3**

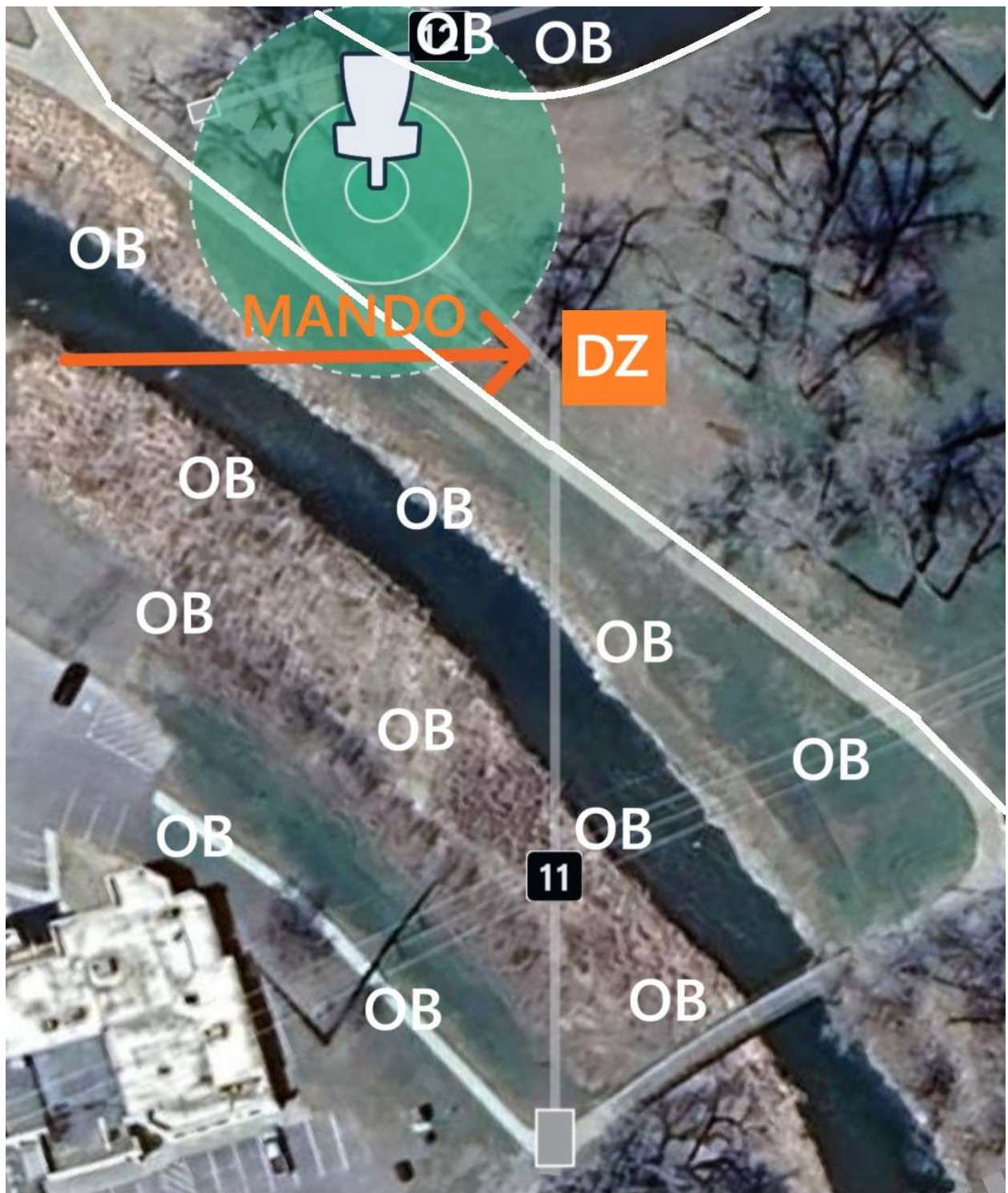


**Hole 10**

273 ft

**Par 3**





**Hole 11**

350 ft

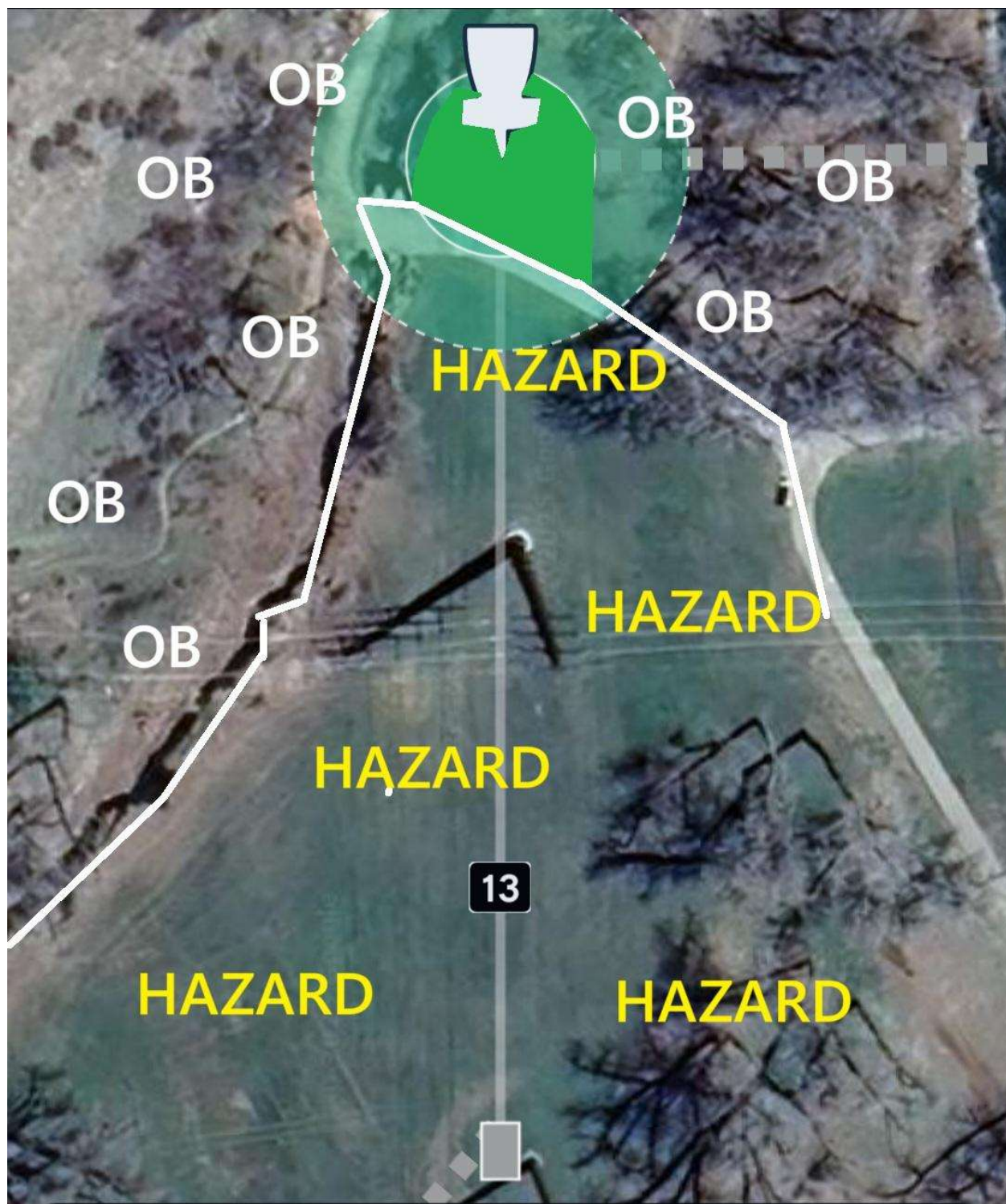
**Par 3**





## Par 3

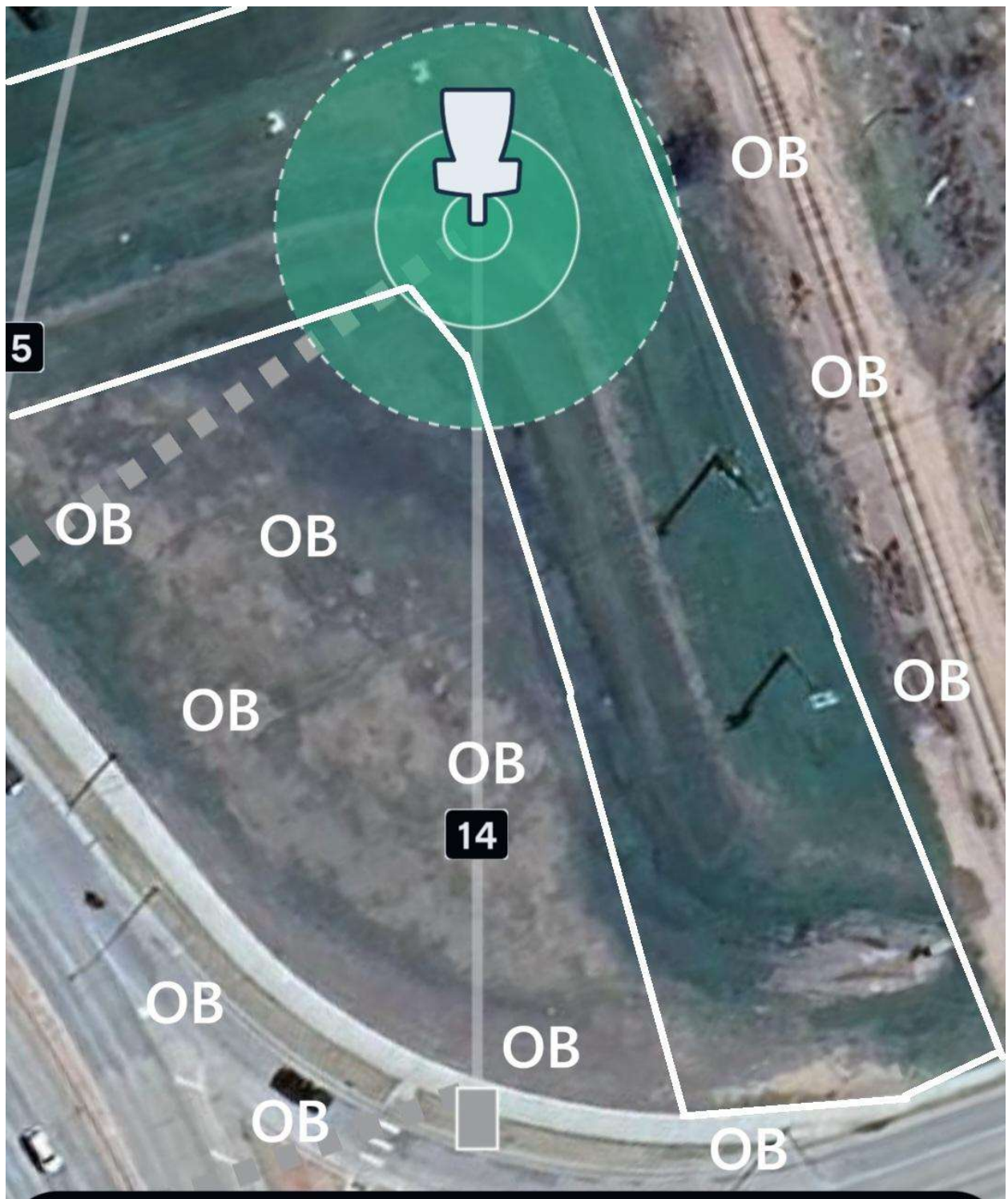




**Hole 13**

336 ft

**Par 4**

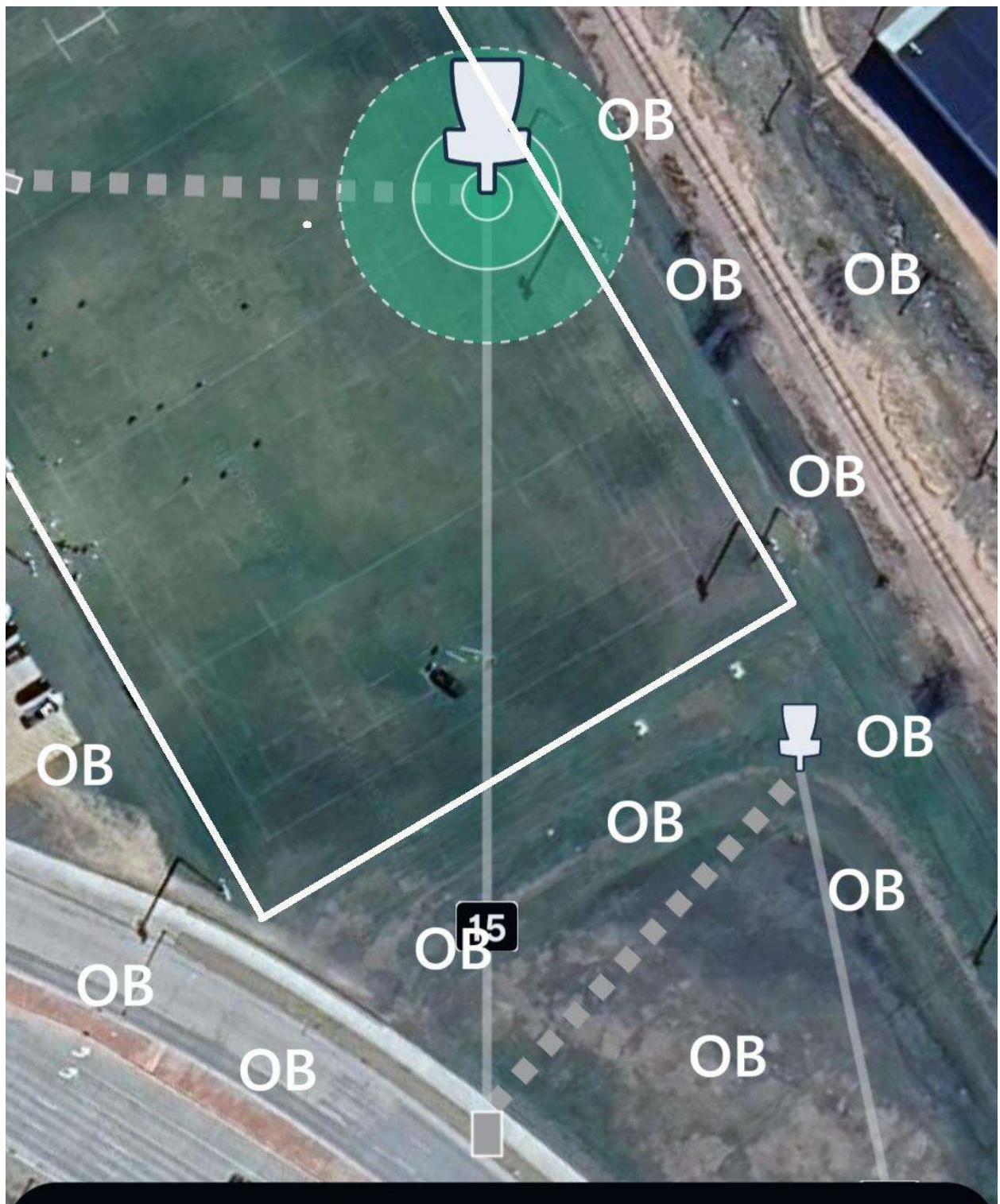


**Hole 14**

280 ft

**Par 3**





**Hole 15**

408 ft

**Par 3**

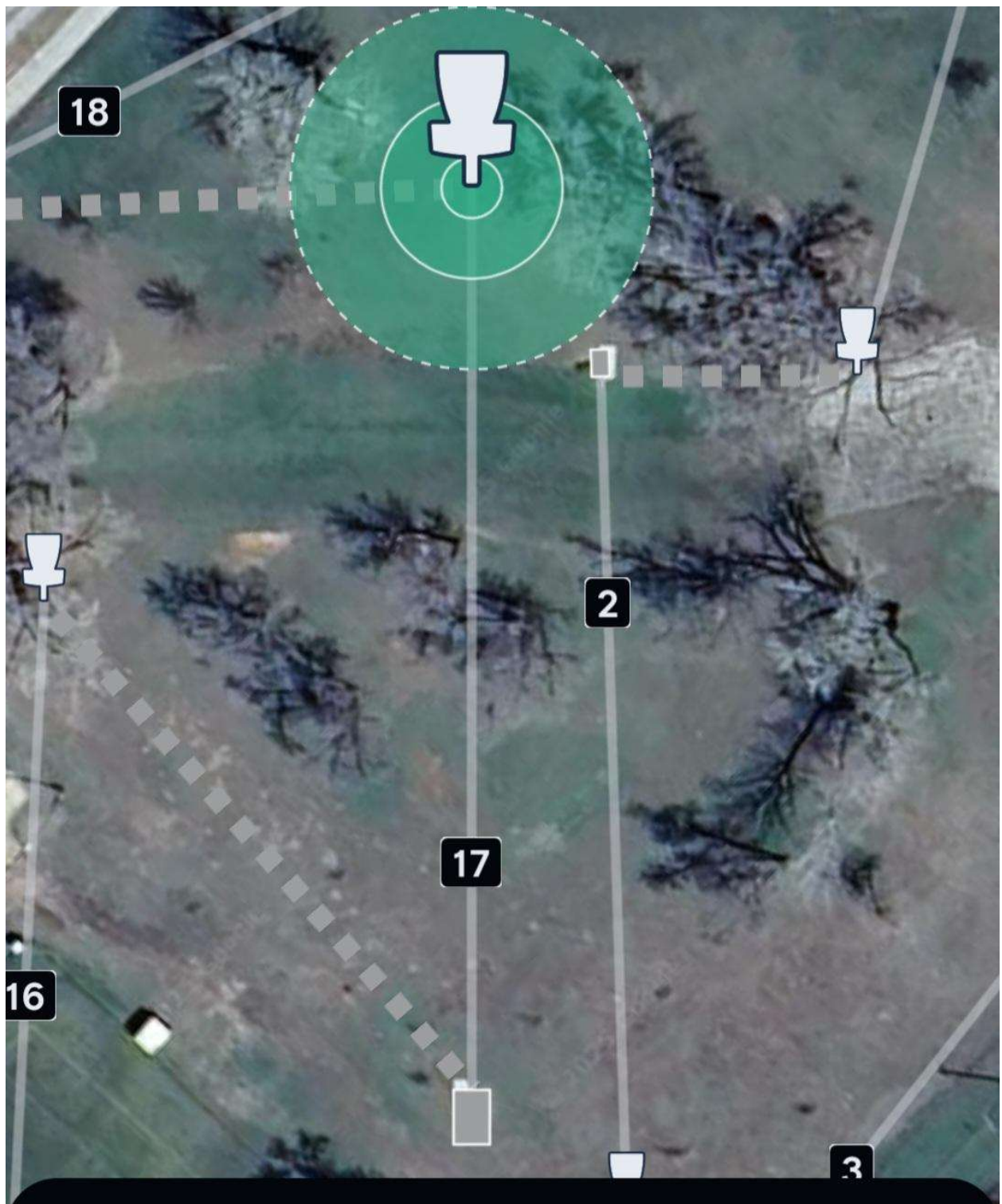


**Hole 16**

225 ft

**Par 3**





**Hole 17**

**326 ft**

**Par 3**



**Hole 18**

267 ft

**Par 3**