

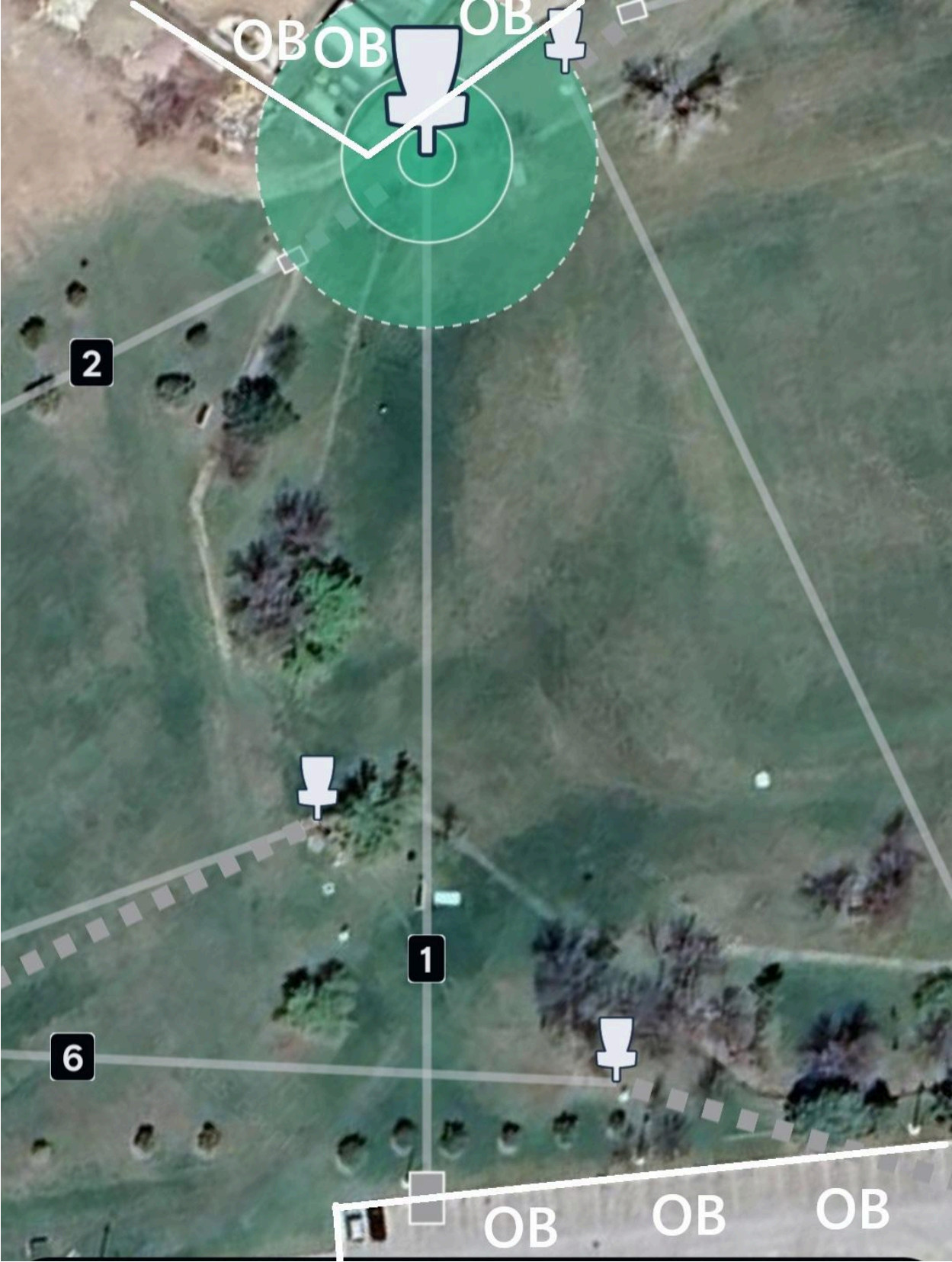
NADGT @ Black Hills State University

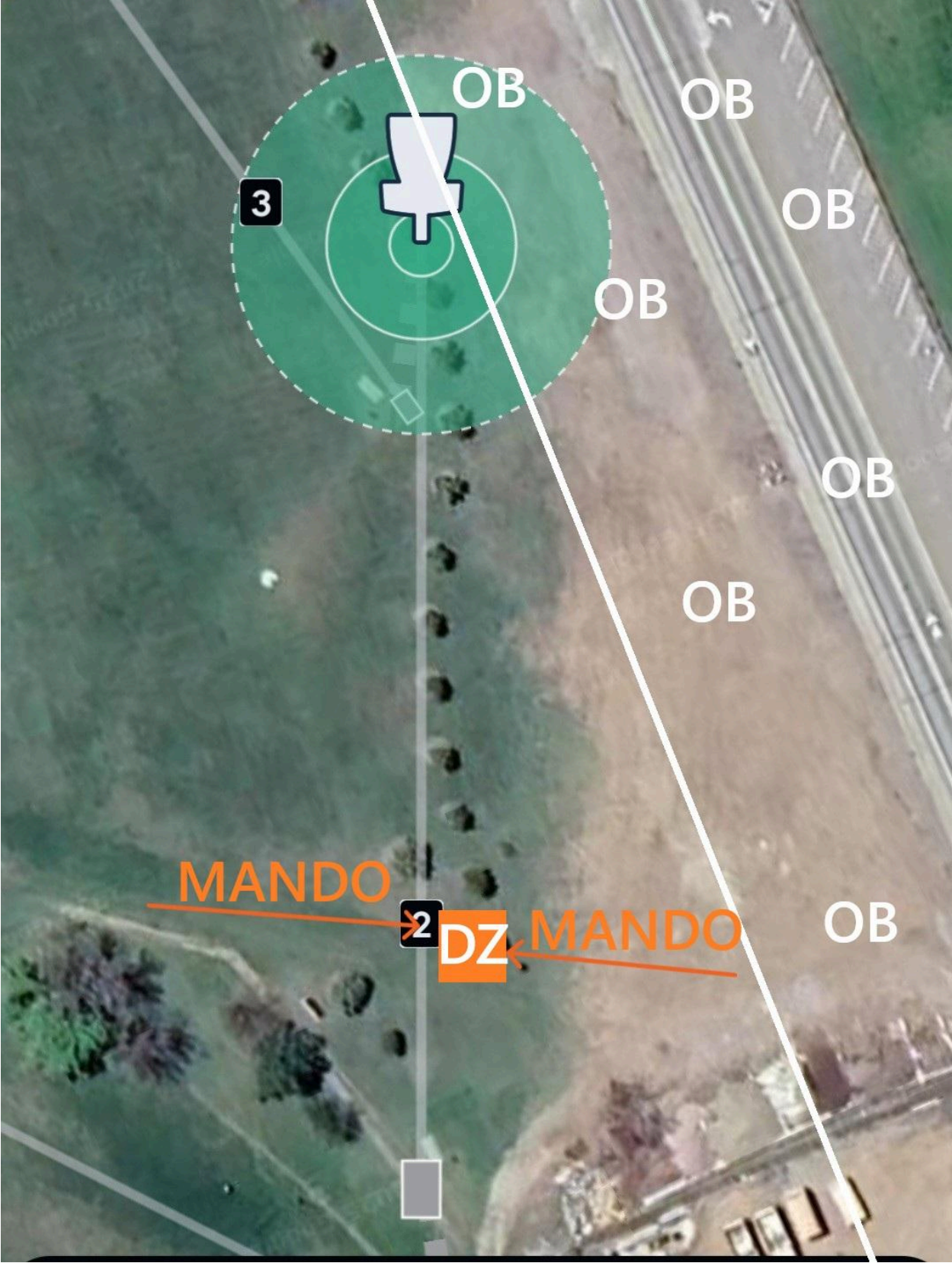
July 26, 2025

Hole	Teepad	Basket	Distance	Par	Notes
1	Temp 1	Basket 1	390'	3	OB fence and beyond.
2	Tee 2	Temp 2	280'	3	Double Mando between marked trees. If mando is missed, proceed to the DZ with a one stroke penalty. OB marked line and beyond.
3	Tee 3	Basket 4	553'	4	Mando Right of marked tree. If mando is missed proceed to the DZ(Tee 4) with a stroke penalty. OB curb and beyond.
4	Temp 4	Basket 3	251'	3	Tee from OB. If you do not establish inbounds, retee with a one stroke penalty. OB curb and short. The islands/medians/planters in the parking lot are OB.
5	Temp 5	Basket 6	330'	3	Mando Left of marked tree. If the mando is missed, retee with a one stroke penalty. OB curb and short.
6	Tee 5	Basket 5	292'	3	Double Mando between marked trees. If the mando is missed, proceed to DZ with a one stroke penalty. OB curb and beyond. OB drainage creek/marked line and beyond.
7	Temp 7	Basket 16	491'	4	Tee for OB. If you do not establish inbounds, retee with a one stroke penalty. OB curb and short. OB fully surrounded by water. OB fence and beyond.
8	Tee 17	Basket 19	344'	3	OB fence and beyond. OB sidewalk and beyond.
9	Temp 9	Temp 9	793'	4	OB sidewalk and beyond. OB curb and beyond right.
10	Temp 10	Temp 10	242'	3	Tee from OB. Double Mando between marked trees. If you do not establish inbounds, or miss the mando, proceed to the DZ with a one stroke penalty. OB curb and short. OB concrete.
11	Tee 18	Basket 18	287'	3	Triple Mando created by the field goal post. If the mando is missed, proceed to the DZ with a one stroke penalty. To complete the mando, play between the vertical poles and underneath the cross bar. If you go through one of the triangle gaps, you missed the mando.

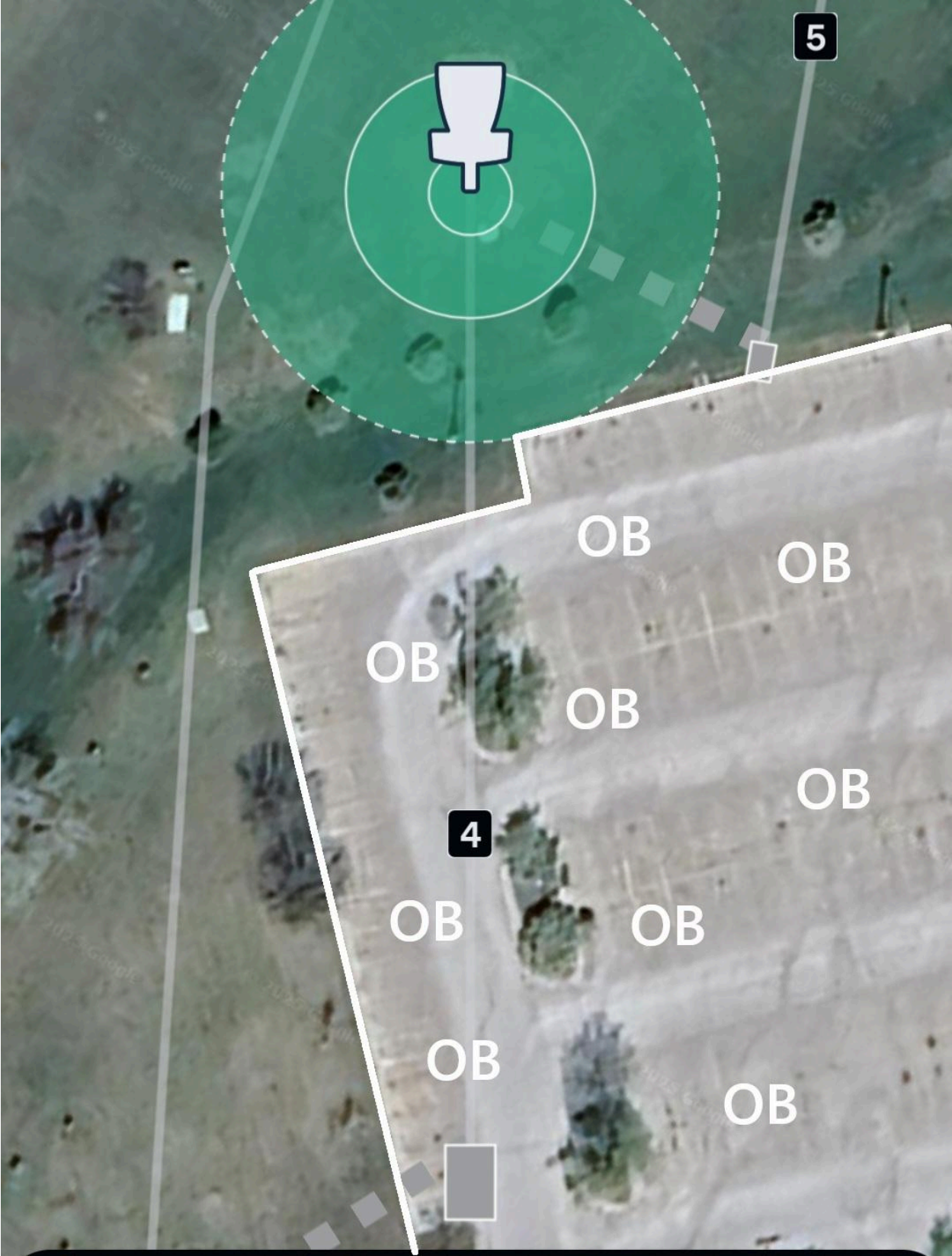
Hole	Teepad	Basket	Distance	Par	Notes
12	Temp 12	Basket 14	379'	3	OB sidewalk and beyond. OB fence and beyond.
13	Temp 13	Basket 7	435'	3	OB drainage creek and beyond.
14	Temp 14	Basket 12	501'	4	OB sidewalk and beyond. OB fence and beyond. Shot put sand trap plays as a Hazard.
15	Temp 15	Basket 11	343'	3	Tee from OB. If you do not establish inbounds, retee with a one stroke penalty. OB sidewalk and left. Shot put sand trap plays as a hazard.
15	Temp 15	Basket 11	343'	3	Tee from OB. If you do not establish inbounds, retee with a one stroke penalty. OB sidewalk and left. Shot put sand trap plays as a hazard.
16	Temp 16	Temp 16	687'	4	Tee from OB. River Island. OB sidewalk and short, if you do not clear sidewalk on tee, retee with a one stroke penalty. OB fence and beyond. The river is created by the drainage creek, sidewalk and parking lot.
17	Temp 17	Basket 8	240'	3	Tee from OB. OB sidewalk and short. OB curb and deep. If you do not establish in bounds, retee with a one stroke penalty.
18	Temp 18	Basket 9	381'	3	Tee from OB. If you do not establish in bounds, retee with a one stroke penalty. OB sidewalk and beyond right. OB fence and beyond. The bridge is in bounds. There is a marked line that shows where the sidewalk ends and the bridge begins.
19	Temp 19	Temp 19	221'	3	All concrete plays as a hazard for this hole.
		TOTAL	7,442 ft	62	

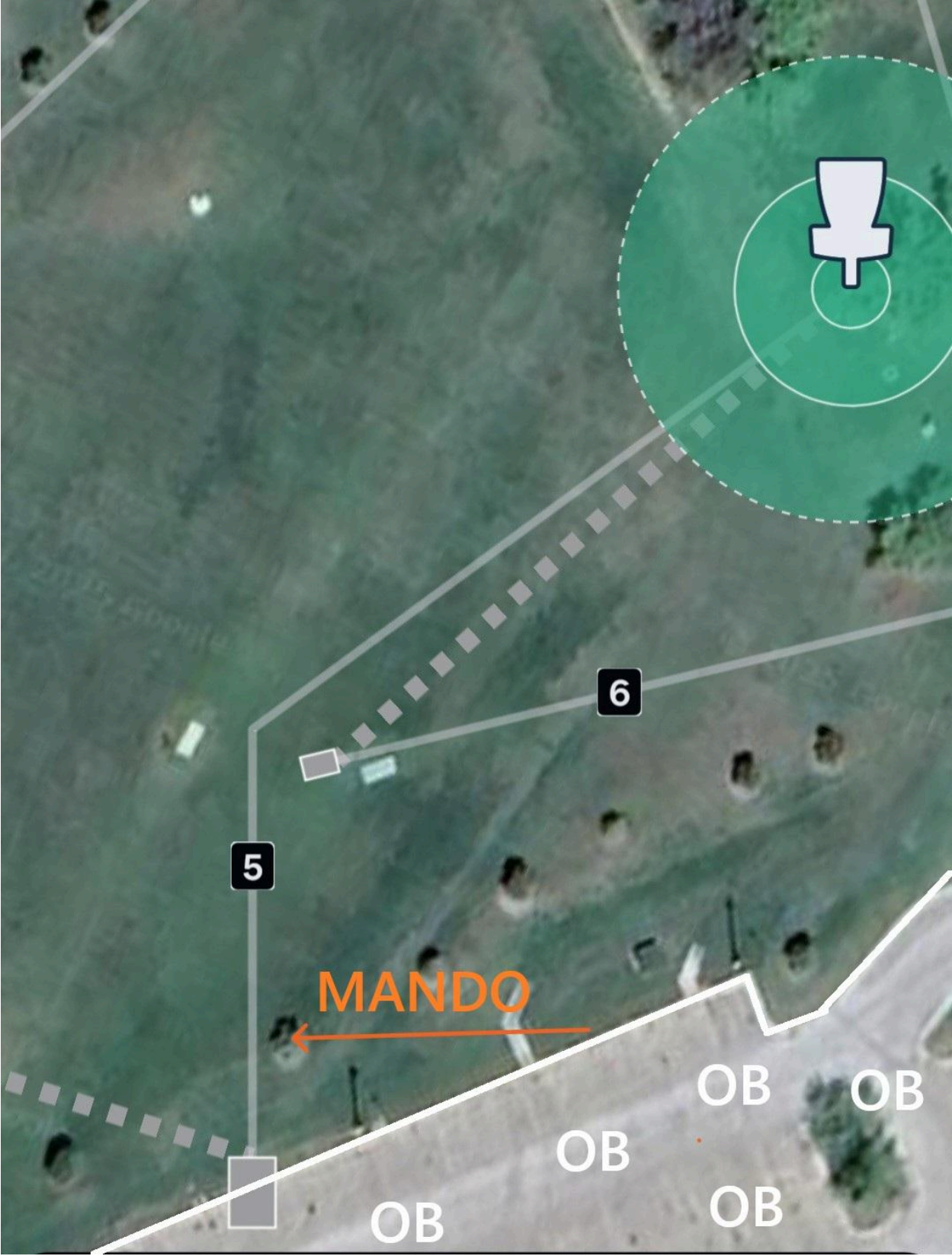






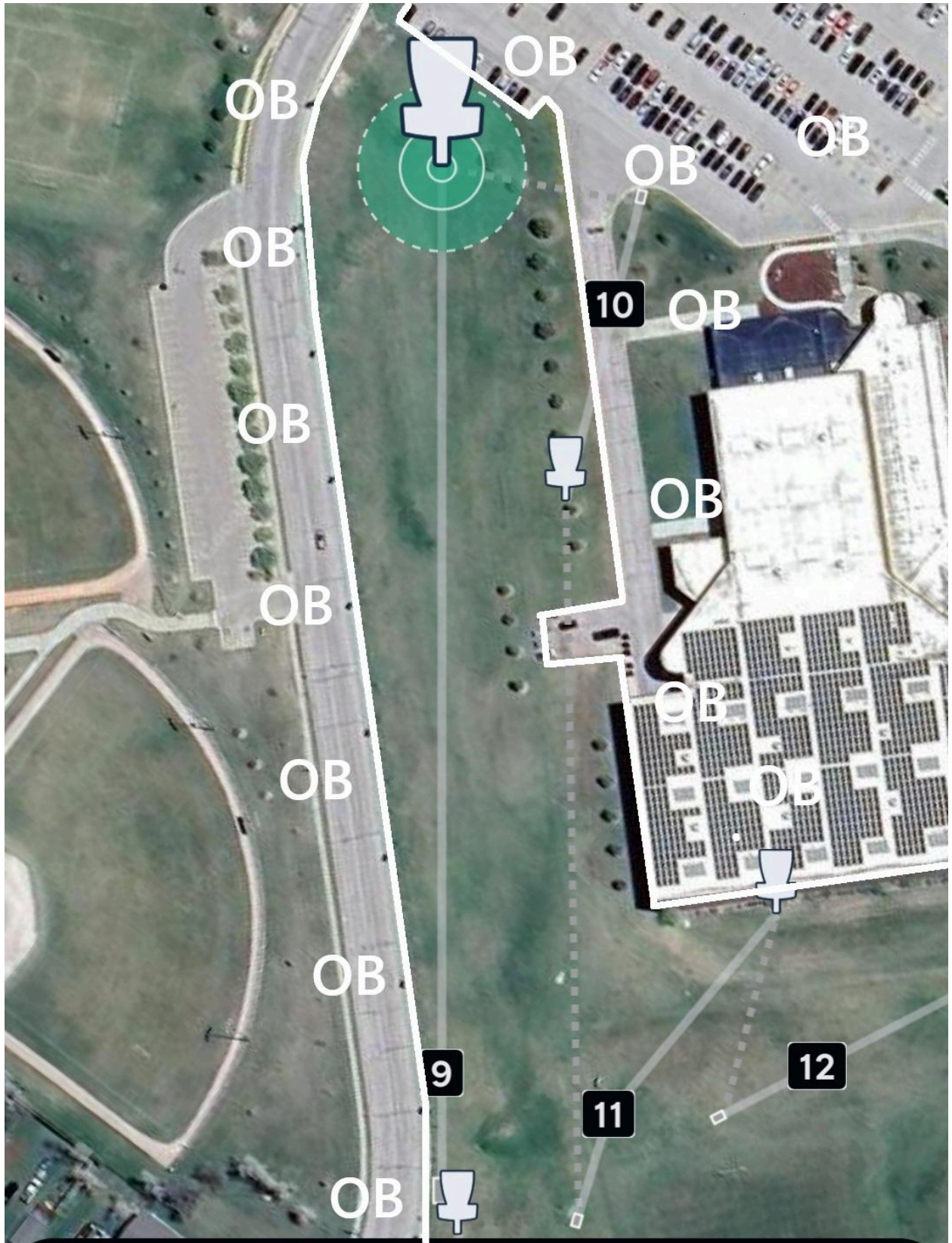


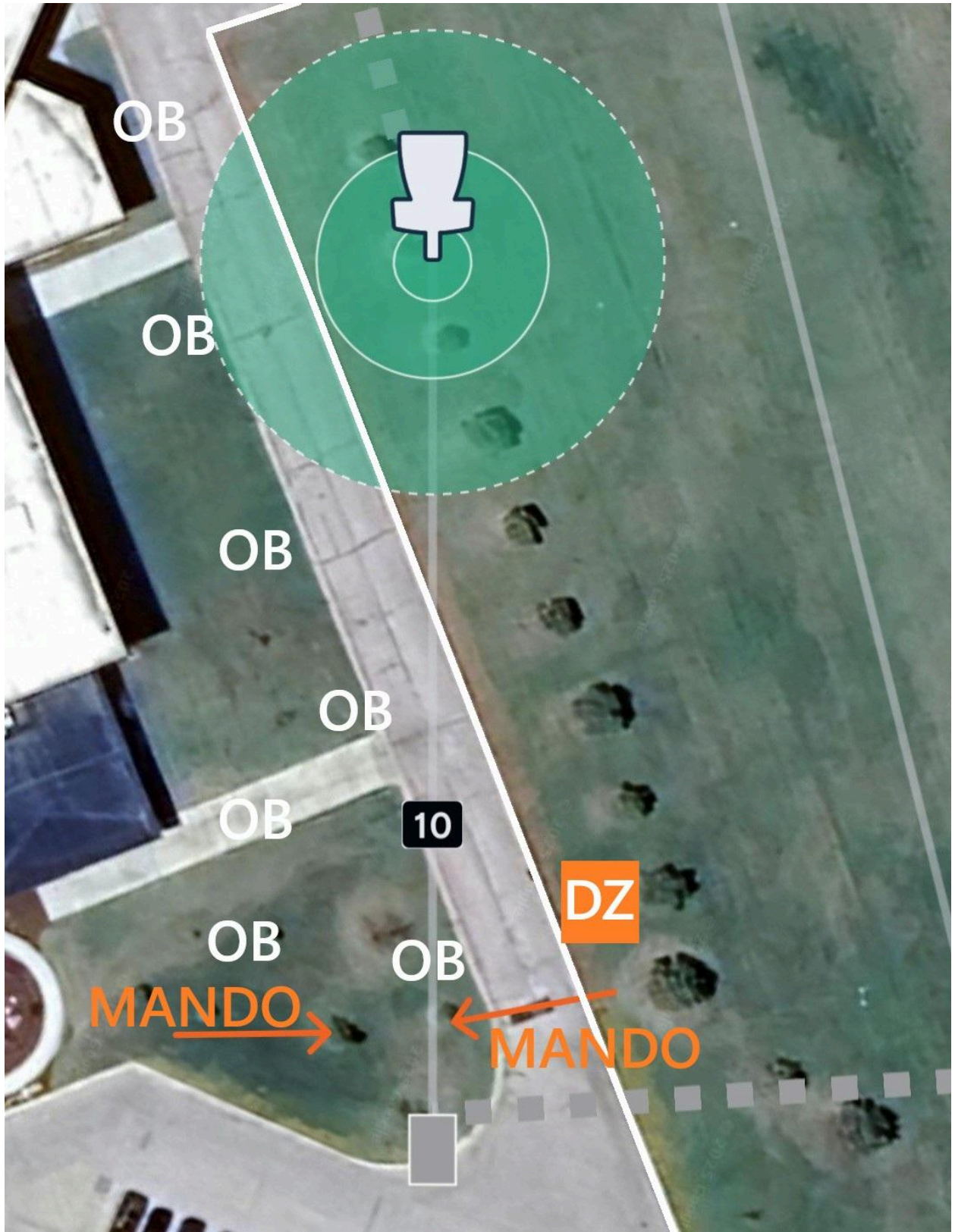












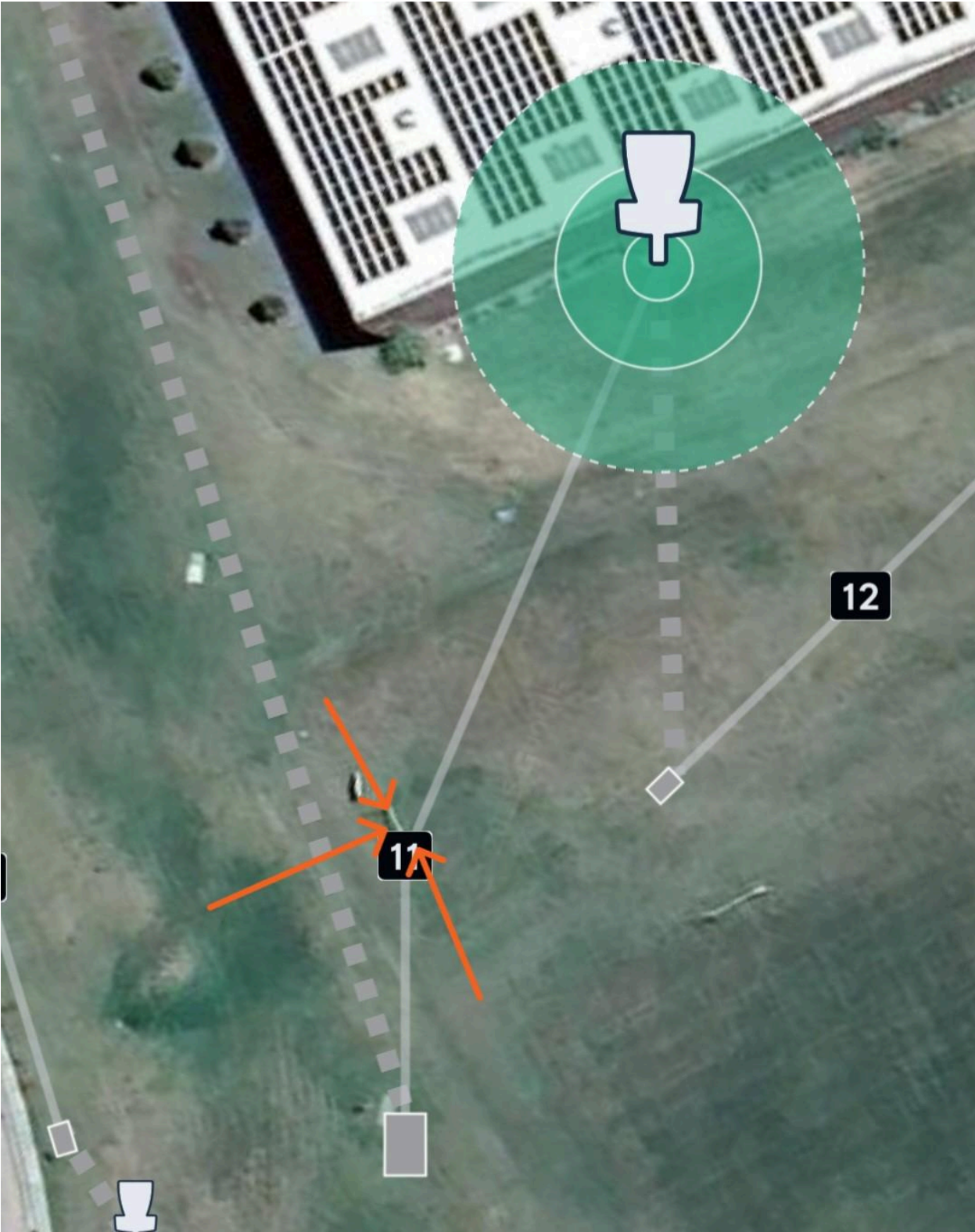








Photo for Hole #15 is in progress.

Continued construction on campus lead to technical difficulties creating this map in UDisc.

