

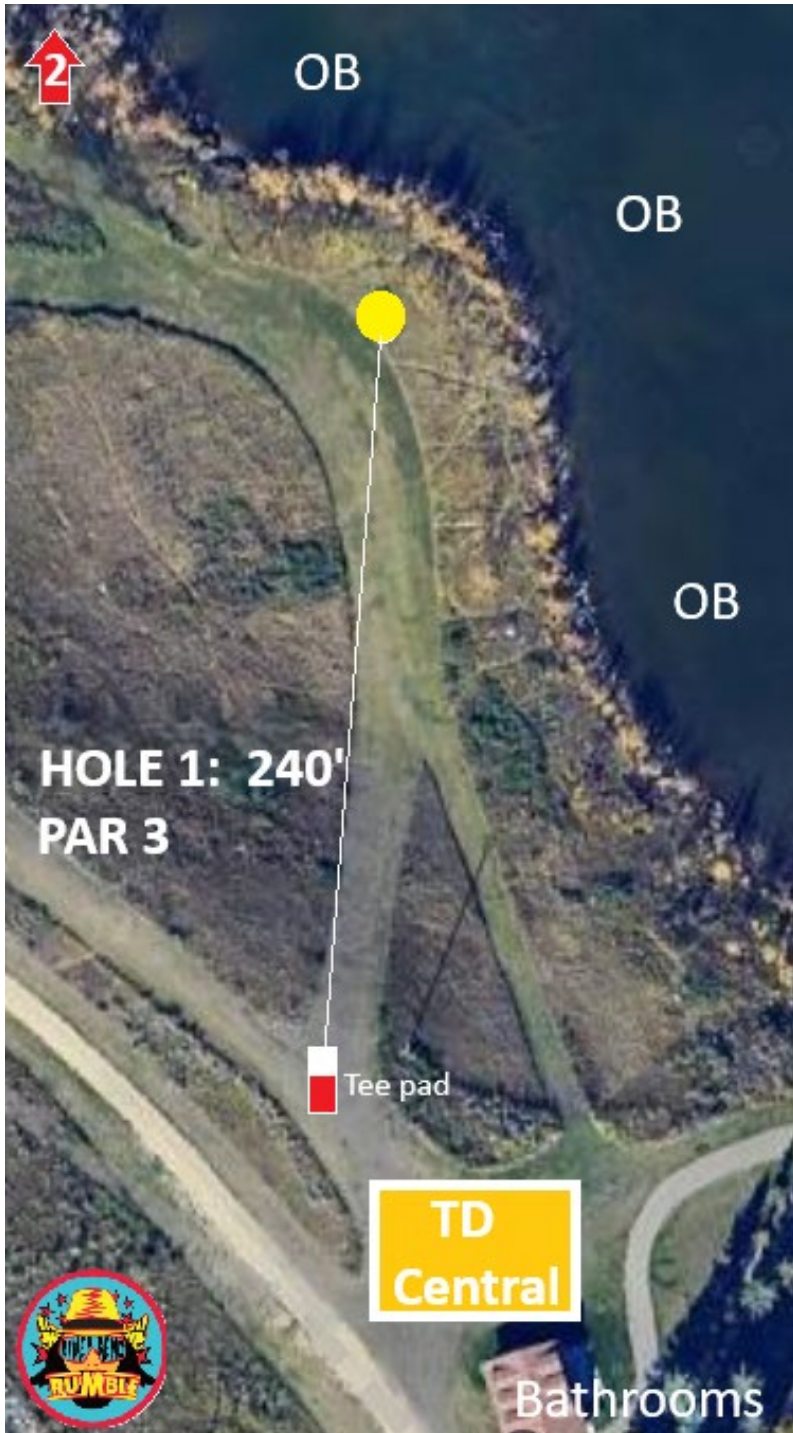


# **RIVERBEND RUMBLE!**

**PLAYERS CADDY BOOK 2025**



# Scott Subaru



## HOLE 1: PAR 3 - 240'

OB water,  
Play your next shot from point of entry  
with a one-stroke penalty.

Tournament Central and Bathrooms  
are just behind this tee box.



**HOLE: 2 PAR 3**

**WHITE: 335'**

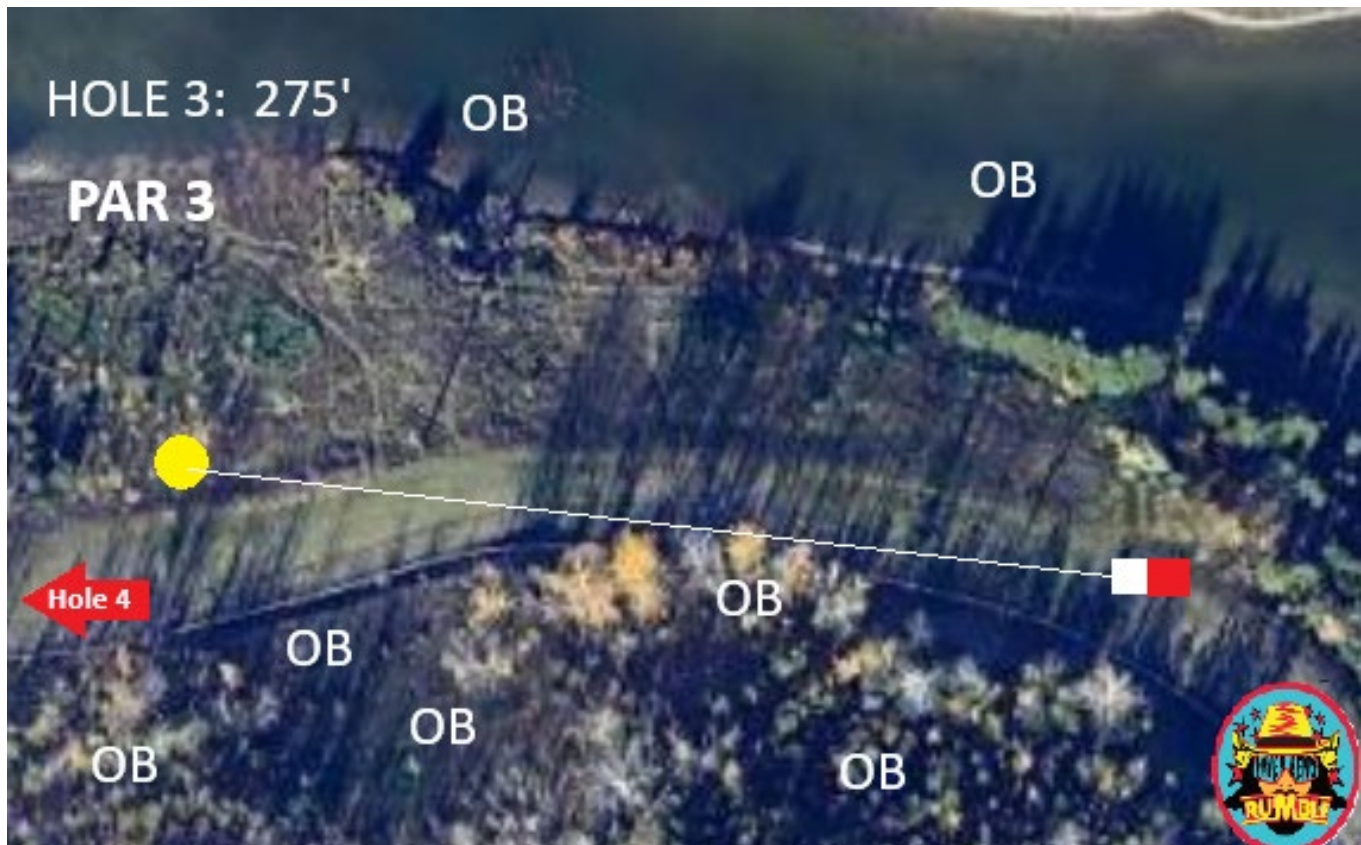
**RED: 246'**

OB water,  
OB fence and beyond,  
DO NOT CLIMB THE FENCE.  
OB gun range (Large wall).

All OB advance to the Red tee pad, with a one-stroke penalty.

If player throws OB from Red tee pad play your next shot from point of entry, with a one-stroke penalty.

# MIR MIKES<sup>™</sup> SteakhouseCasual



## **HOLE: 3 PAR 3 - 275'**

OB water,

OB fence on the left DO NOT CLIMB THE FENCE.

Play your next shot from point of entry, with a one-stroke penalty.



HOLE 4:  
WHITE: 321'  
RED: 262'  
PAR 3

**HOLE: 4 PAR 3**

**WHITE: 321**

**RED: 262'**

OB fence on the left DO NOT CLIMB THE FENCE, OB gun range wall on the left (this wall begins at the end of the fence).

Play your next shot from where it crossed the OB line, with a one-stroke penalty.

Dirt road is in play



HOLE 5: 278'  
PAR 3

## HOLE 5: PAR 3 278'

Mando left of light pole, (Must shoot left of light pole)  
Drop Zone for missed Mando is directly left of Mando 1m.  
Play your next shot from DZ, with a one-stroke penalty.  
Dirt road is in play



TEAM BOWNESS

REAL ESTATE



HOLE 6:  
WHITE: 393'  
RED: 354'



Bathrooms

7

**HOLE 6: PAR 3**

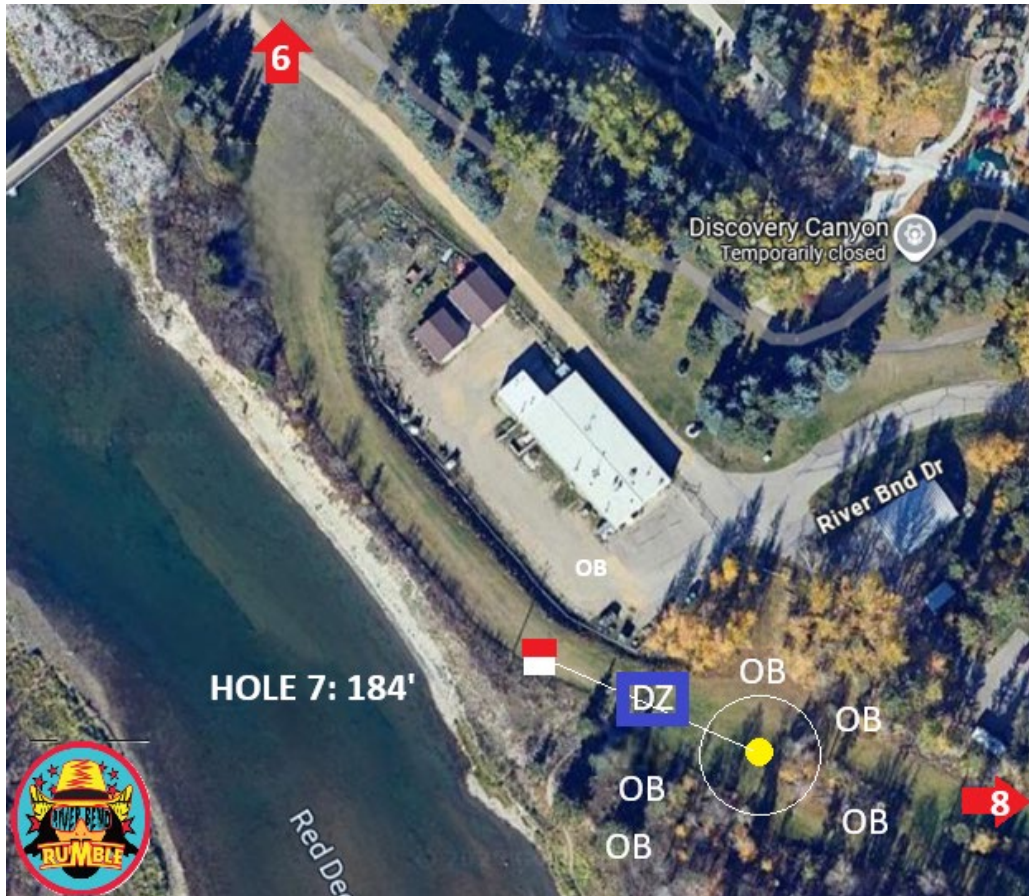
**WHITE: 393'**

**RED: 354'**

OB line on the right marked with string and stakes.

Play your next shot from point of entry, with a one-stroke penalty.

# Nichol Buckley



## HOLE: 7 PAR 3 - 184'

Island hole marked with string and stakes

If player fails to land within the island from tee shot, play next shot from DZ with a one-stroke penalty.

DZ is in the gully between the tee pad and the basket.

If player fails to land within the island from the DZ and or subsequent shots go out of bounds once a player lands within the island play next shot from point of entry, with a one-stroke penalty.



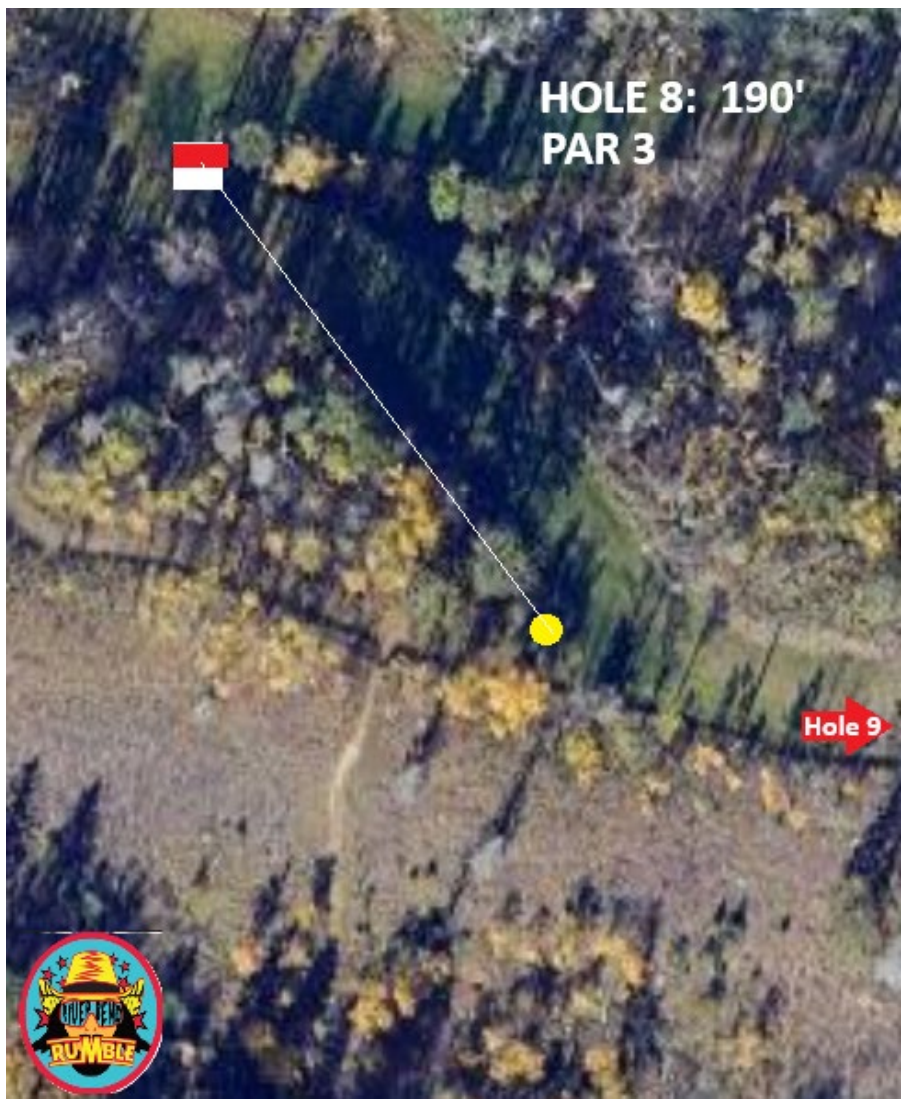
**COLDWELL BANKER**  
**ONTRACK REALTY**



**LESLIE DERUYTER**

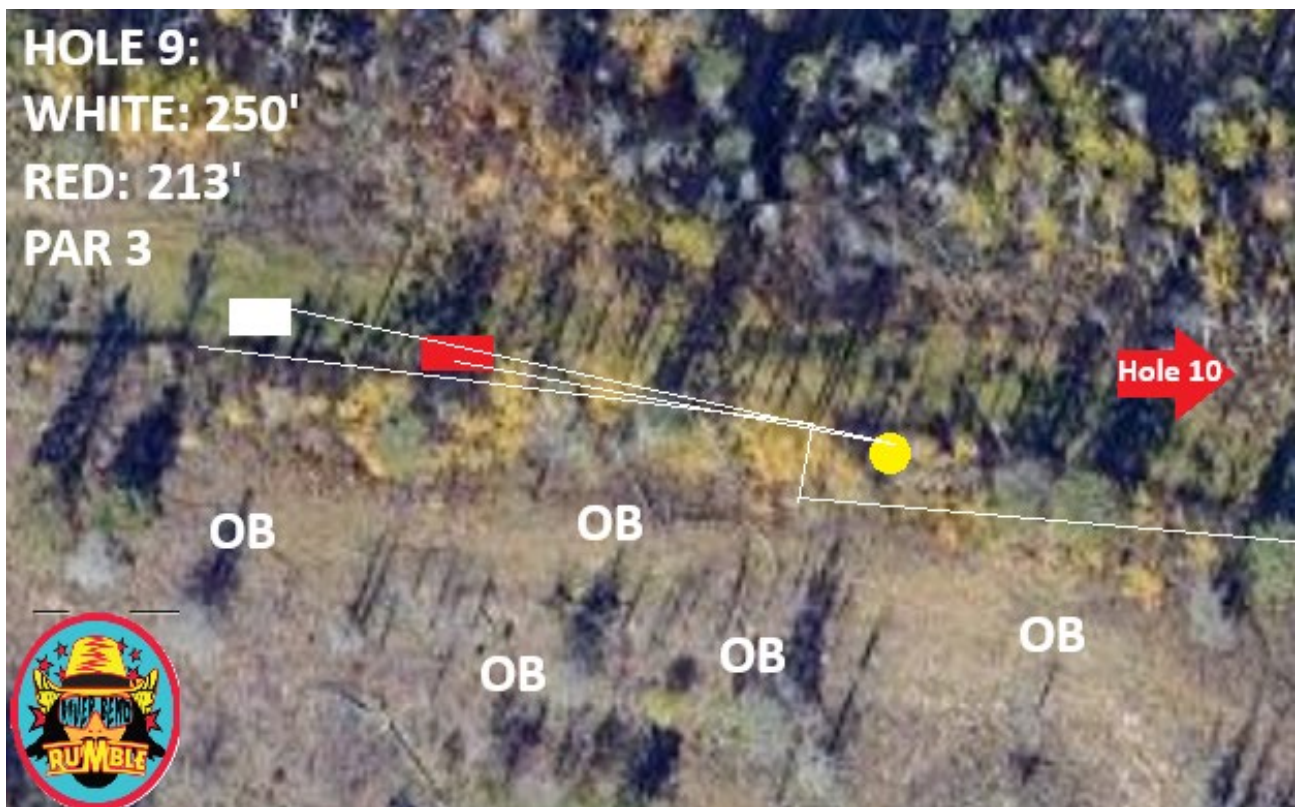


**SUE JAMIESON**



## **HOLE 8: PAR 3 – 190'**

No OB



**HOLE: 9 PAR 3**

**WHITE: 250'**

**RED: 213'**

OB line on the right marked with string and stakes.

Play your next shot from point of entry, with a one-stroke penalty.



**HOLE: 10 PAR 4**

**WHITE: 463'**

**RED: 315'**

OB line at the bottom of the hill marked with string and stakes.  
Play your next shot from point of entry, with a one-stroke penalty.  
This OB separates bottom of hole 10 from hole 19 green

# MOUNTAINVIEW

DODGE CHRYSLER JEEP RAM  
OLDS, ALBERTA



**HOLE:11 PAR 4**

**WHITE: 452'**

**RED: 311'**

No OB



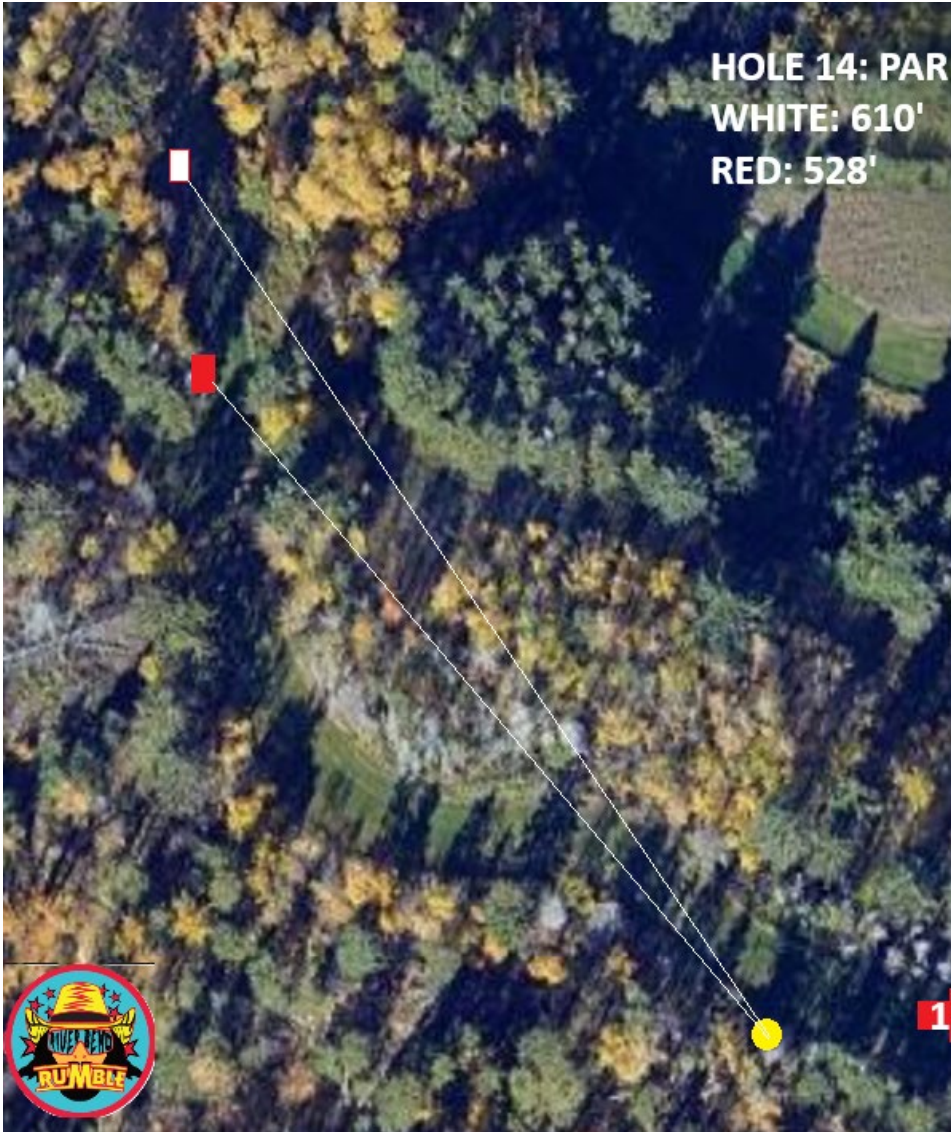
## HOLE 12: PAR 3 - 276'

OB line on the right marked with string and stakes.  
Play your next shot from point of entry, with a one-stroke penalty.



**HOLE 13: PAR 3 - 210'**

No OB



HOLE 14: PAR 5  
WHITE: 610'  
RED: 528'

**HOLE 14: PAR 5**  
**WHITE: 610'**  
**RED: 528'**

No OB



**HOLE 15: PAR 4**

**WHITE: 427'**

**RED: 288**

Double Mando between marked pine trees,  
If player fails to make the Mando, advance to the Red tee pad, with a one-stroke penalty.  
Red tee is at the bottom of the gully.

# MOUNTAINVIEW

DODGE CHRYSLER JEEP RAM  
OLDS, ALBERTA



## HOLE 16: PAR 3 - 267'

No OB



18

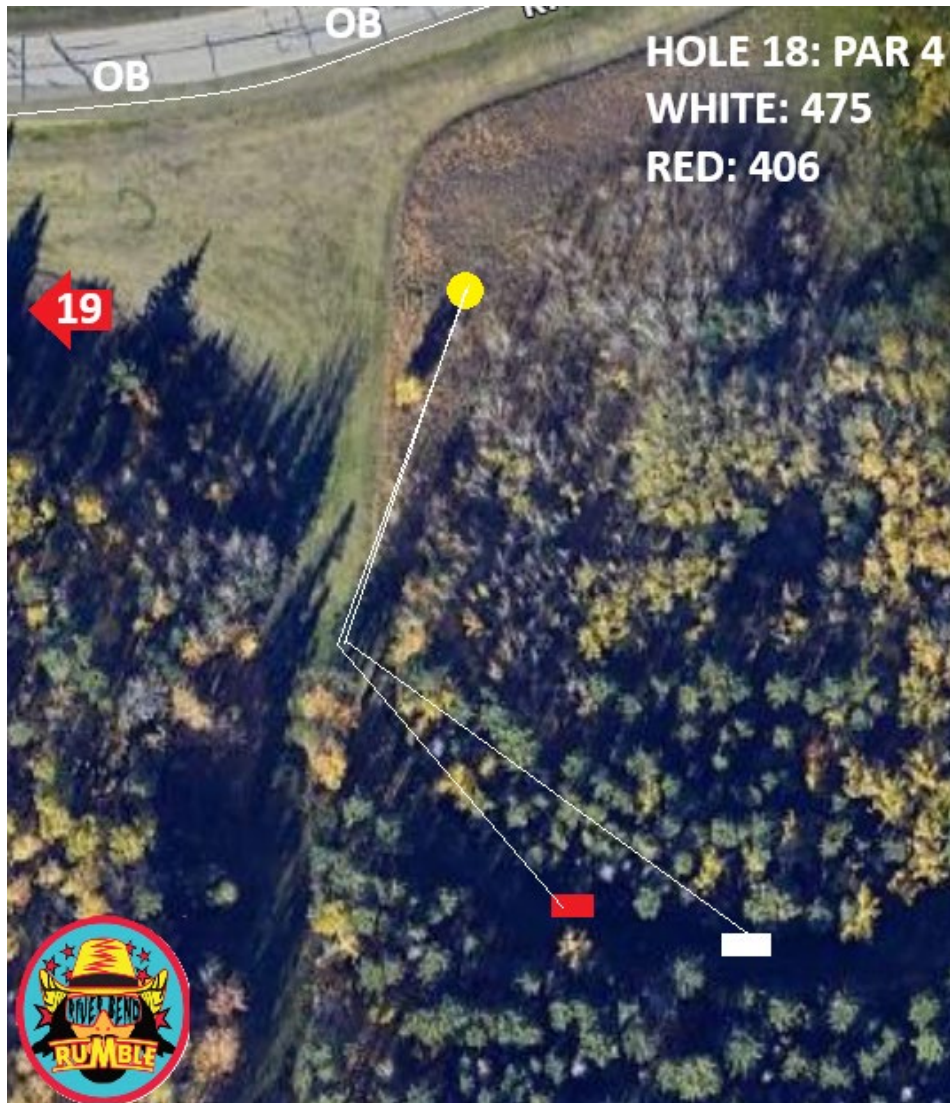
**HOLE 17: PAR 3**  
**297'**

**HOLE 17: PAR 3**  
**297'**

No OB



**SAWBACK**  
brewing company



**HOLE 18: PAR 4**  
**WHITE: 475**  
**RED: 406**

**HOLE 18: PAR 4**  
**WHITE: 475'**  
**RED: 406'**

OB Road and beyond. Please use caution when retrieving discs from the road.

2 metre relief from the road.  
Play your next shot from point of entry, with a one-stroke penalty.



# TEAM BOWNESS

REAL ESTATE



## HOLE 19: PAR 3 - 270'

OB Road and beyond on the right. Please use caution when retrieving discs from the road.  
2 metre relief from the road.

Play your next shot from point of entry, with a one-stroke penalty.



**COLDWELL BANKER**  
**ONTRACK REALTY**



**LESLIE DERUYTER**



**SUE JAMIESON**



## **HOLE 20: PAR 3 - 230'**

Island hole marked with string and stakes

If player fails to land within the island, play next shot from DZ with a one-stroke penalty.

DZ is at entrance to island between tee pad and basket,

If player fails to land within the island from the DZ and or subsequent shots go out of bounds once a player lands within the island play next shot from point of entry, with a one-stroke penalty.

# Our Amazing Sponsors!

A massive thank you to our incredible sponsors! Your support didn't just meet our expectations—it completely exceeded them. Your generosity has truly overwhelmed us and played a vital role in making this event a resounding success. We are deeply grateful for your commitment to our community.

Subaru

Mr. Mikes

JK Discs

Potentials Edge

Nu Fab Coatings

KCG Laser Cutting and Design

Sue Jamieson OnTrack Realty

Nichol Buckley

Bruce Marsales

Kinsley AB ltd.

Mountainview Dodge

Trophy loft

Chapman Riebeek Law firm

TBS Source for Sports

LA Liquor

Mountainview Dodge

Leslie Deruyter OnTrack Realty

Treeline Disc Golf Apparel

The Gutter Bowling Alley

Nichol Buckley

Open Sky Honey

Fox and Hound Pub

Sawback Brewing

McBane Camera

Klassen Photography

Happy Liquor

State and Main

Legend Water

King Chiropractic

Jerry Rosa

Jerry Rosa

Kaira / Sawback

Team Bowness Realty

Kyler Wilson

Bruce Farmer

Napa Auto Parts

CADGA

Lodge 43

## Thank you!



The Central Alberta Disc Golf Association (CADGA) is beyond proud to host the first-ever inaugural Riverbend Rumble! This event has been a tremendous success, and it's all thanks to the incredible support from every corner of our disc golf family.

We want to extend our deepest gratitude to the many players who brought their passion and skill to the course. Your competitive spirit and sportsmanship are what made our first tournament so special. We also give a huge shout-out to our dedicated sponsors—your generosity was vital in making this tournament a reality. Your commitment to the sport of disc golf helps our community thrive.

Finally, we are so thankful for our entire community—the volunteers, spectators, and everyone who came out to show their support. Your unwavering enthusiasm has truly made this inaugural Rumble an unforgettable event. We can't wait to see you all again next year!

