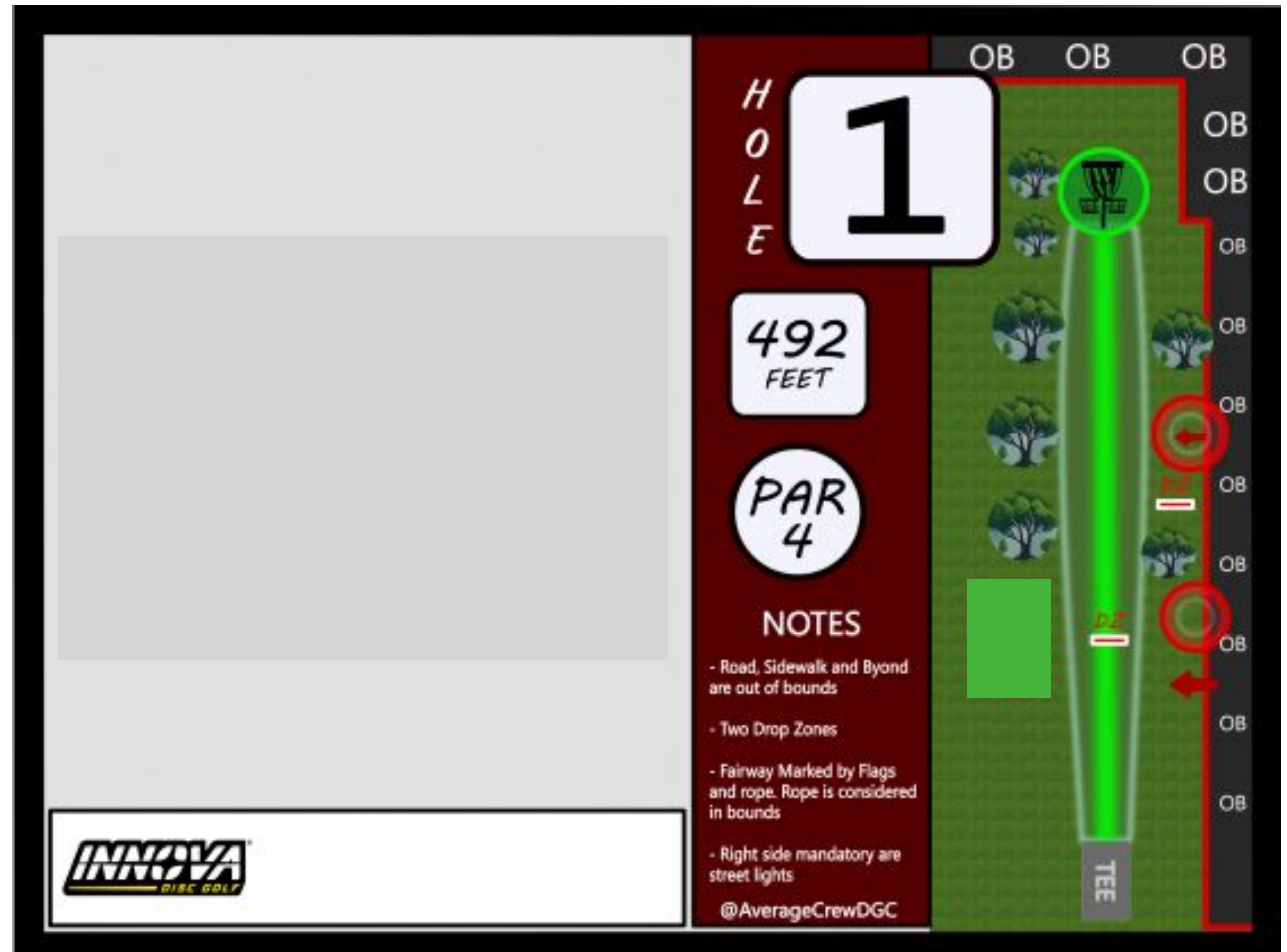


Nixon Open 2025

Caddy Book

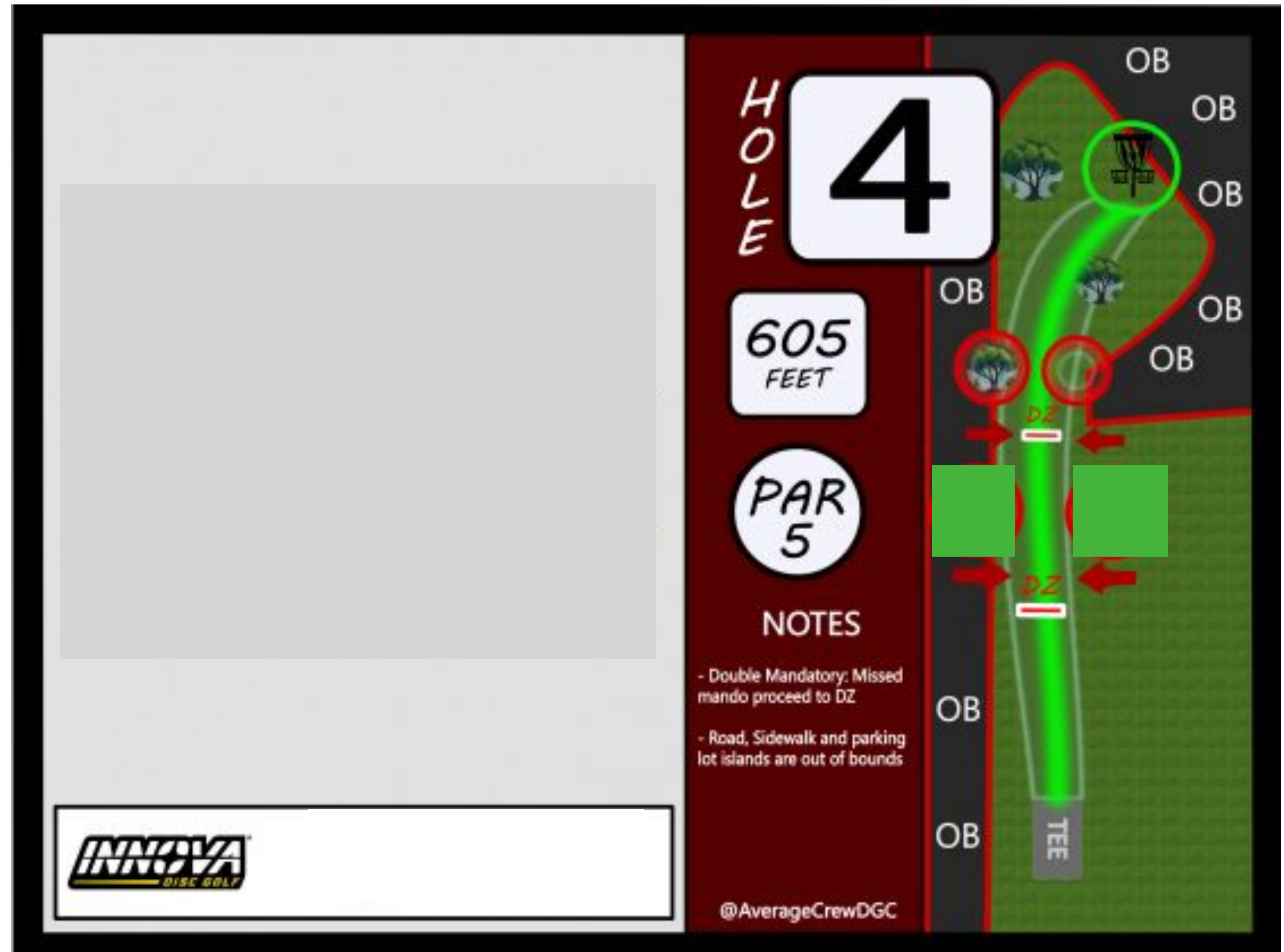
Nixon Open

- Parking Lot, Sidewalk and beyond is OB
- Missed Mando proceed to DZ
- Left side of fairway marked by OB line
- Rope is considered OB (sign is wrong)
- **UPDATE** LEFT SIDE MANDO HAS BEEN REMOVED****



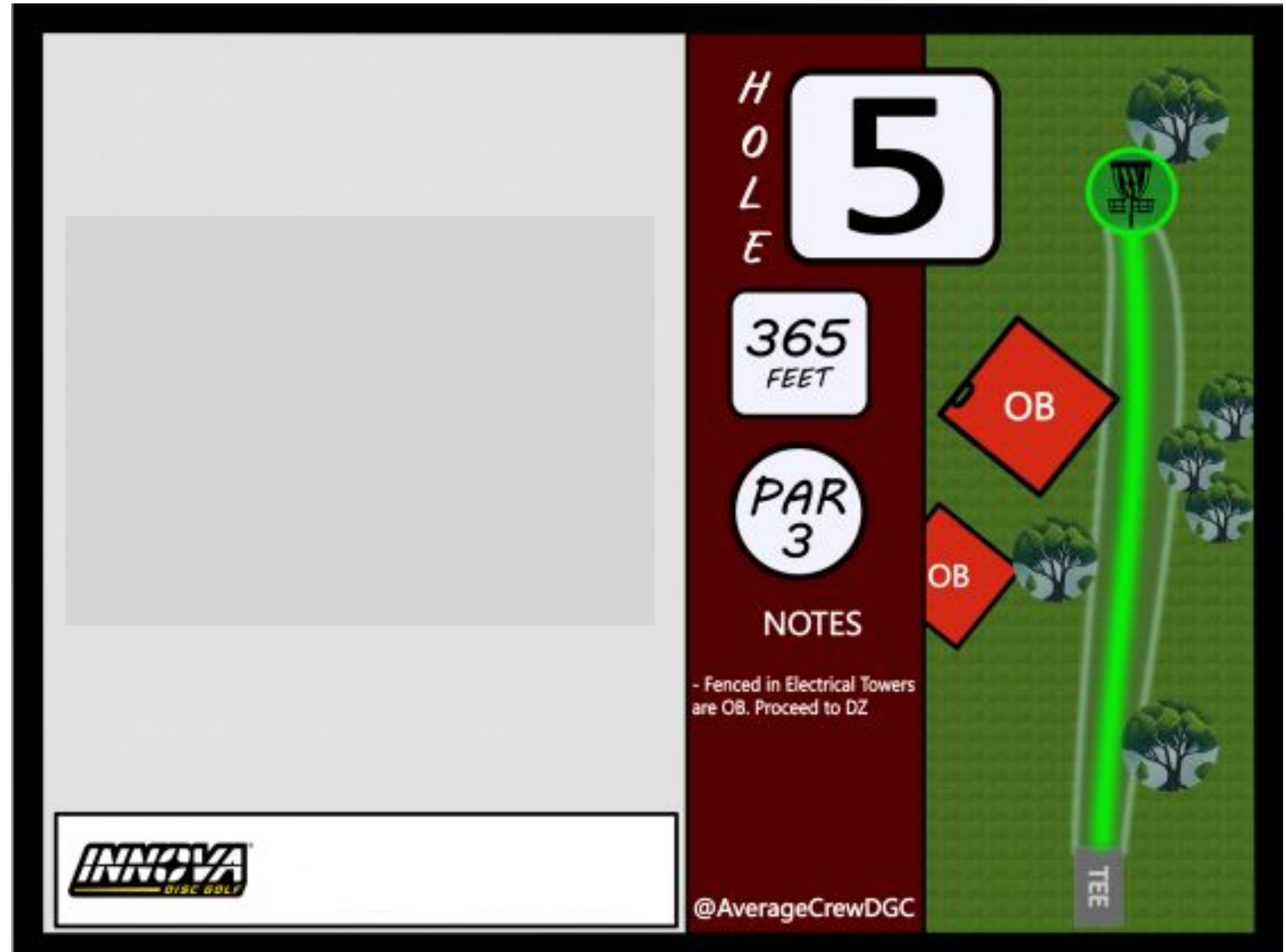
Nixon Open

- Missed Mando proceed to DZ
- Parking lot & islands are OB
- Sidewalk & street OB
- 1st set of mando's no longer in play



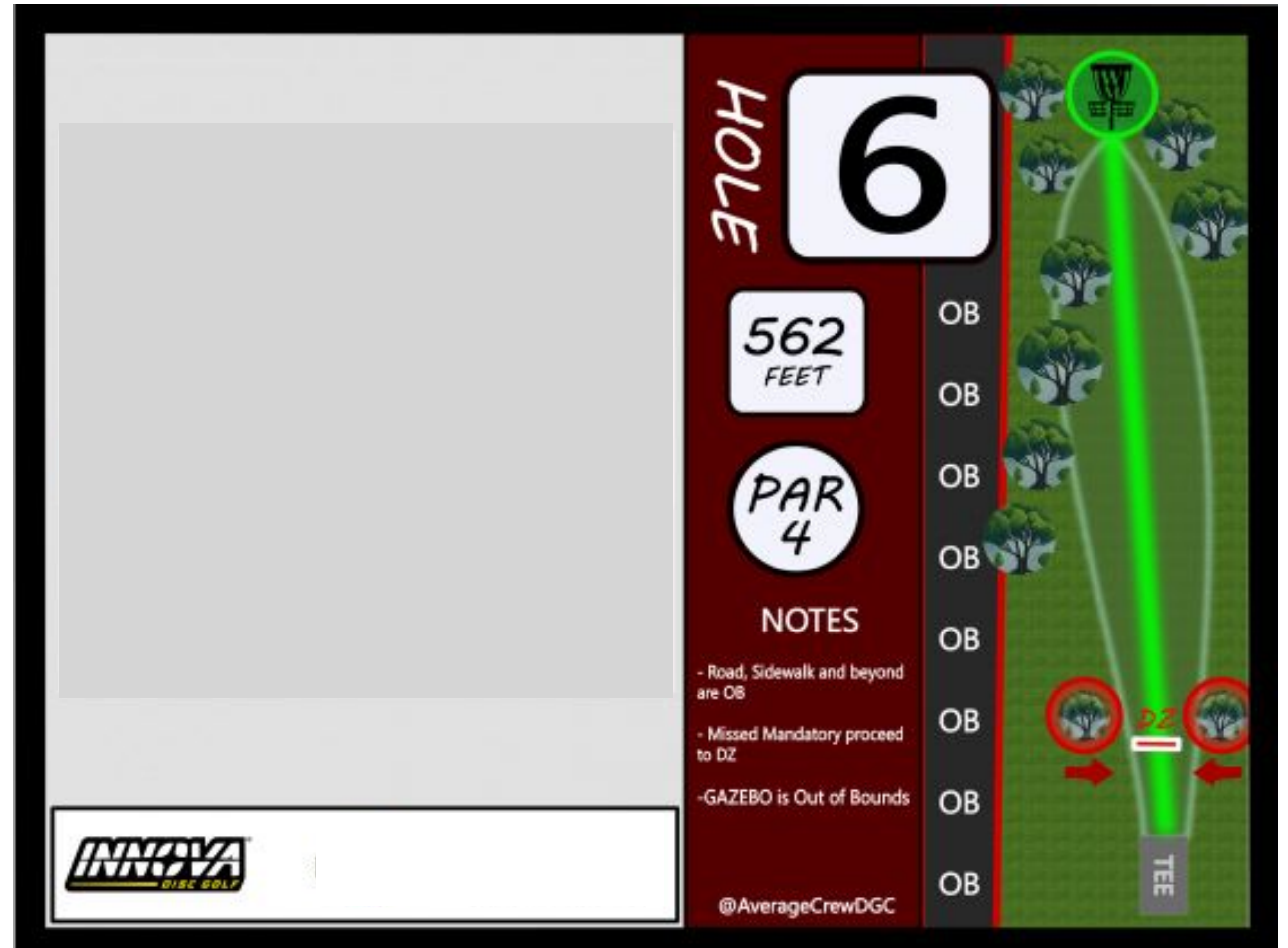
Nixon Open

- Normal OB rules apply
- **Sign incorrect:** No drop zone



Nixon Open

- Street/sidewalk OB
- Gazebo is OB
- Sidewalk/Grass line is OB marker—
not fence line
- DM trees got cut down there's no
Mando's on hole 6



Nixon Open

- Sidewalk, left side of sidewalk and beyond basket area is OB
- Only safe areas are the basket triangle area and the right side
- Missed Mando proceed to DZ

HOLE 7

364 FEET

PAR 3

NOTES

- Sidewalk OB
- Left of Sidewalk OB
- Area behind basket is OB
- Missed Mandatory proceed to DZ

Playground

OB

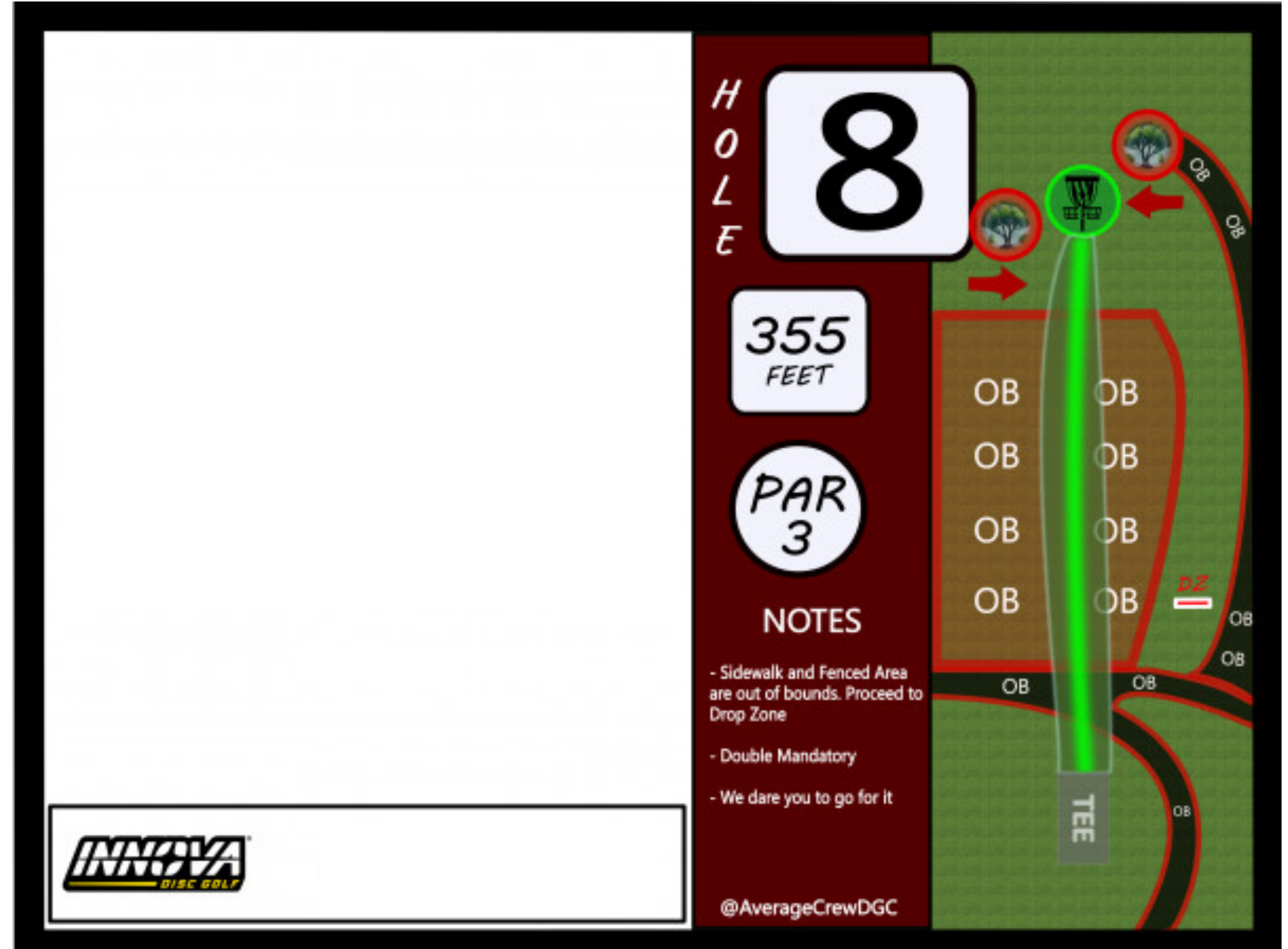
TEE

INNOVA DISC GOLF

@AverageCrewDGC

Nixon Open

- Sidewalks, picnic area & area RT of fairway is OB
- The 2 grass areas (by tee) before picnic area are considered in-bounds
- The picnic area is OB with an optional relief DZ
- Missed Mando tree proceed to near DZ



Nixon Open

- Picnic area, sidewalk & beyond is OB
- Gazebo is OB

HOLE 9

301 FEET

PAR 3

NOTES

- Fenced area is out of bounds
- Sidewalk and beyond is OB
- Gazebo is OB

OUT OF BOUNDS

OB OB OB

OB

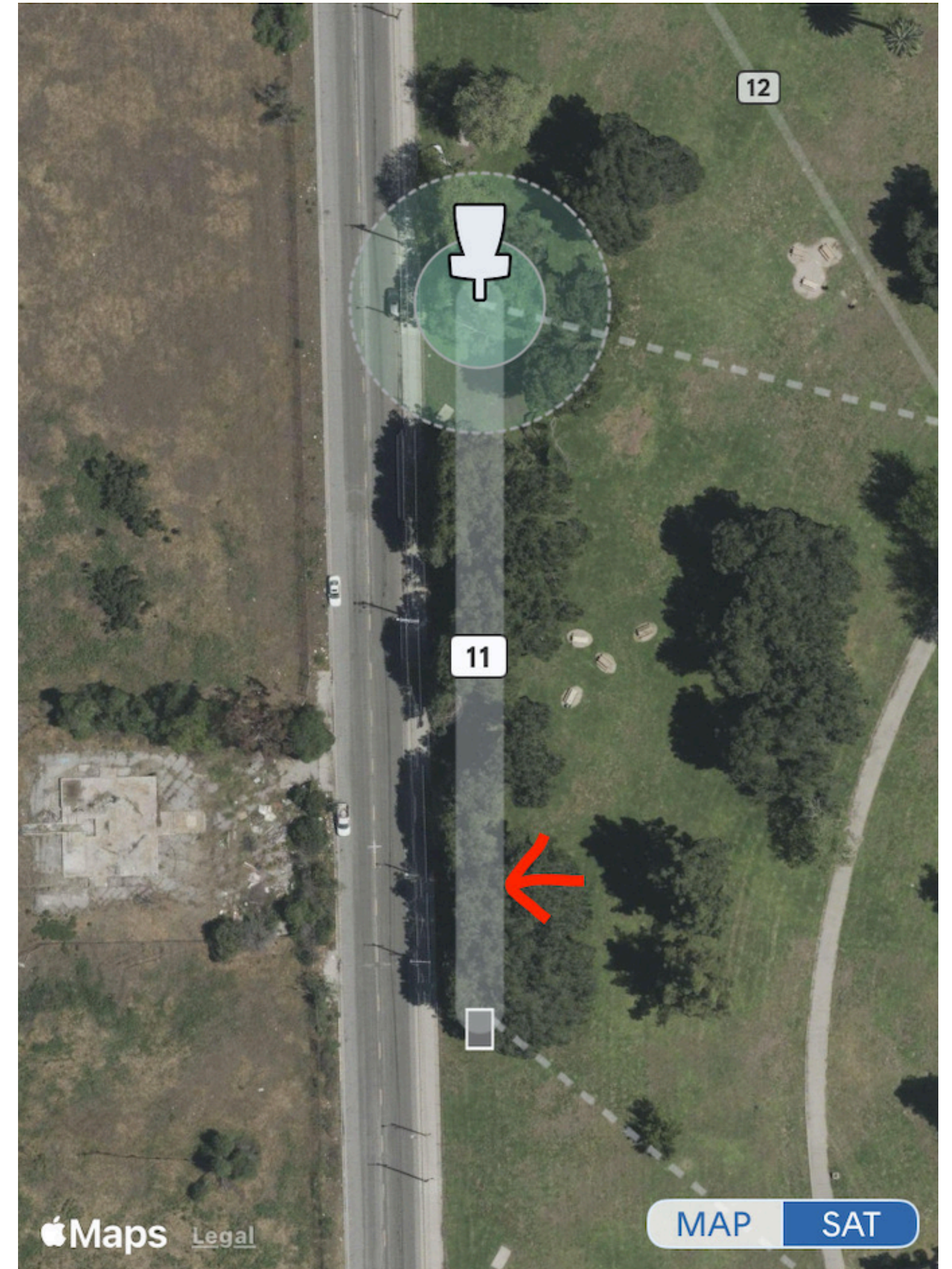
TEE

INNOVA DISC GOLF

@AverageCrewDGC

Nixon Open

- Road and sidewalk are OB
- Sidewalk and grass line is OB marker
- 2nd tree on right is a mando left
- Missed mando proceed to DZ
- Concrete bench areas are optional relief



Nixon Open

- Missed mando proceed to DZ
- Street and sidewalk are OB
- Sidewalk/grass is the OB marker line

HOLE 12

630 FEET

PAR 4

NOTES

- Missed mando proceed to DZ

INNNOVA DISC GOLF

@AverageCrewDGC

Out of Bounds

Out of Bounds

Out of Bounds

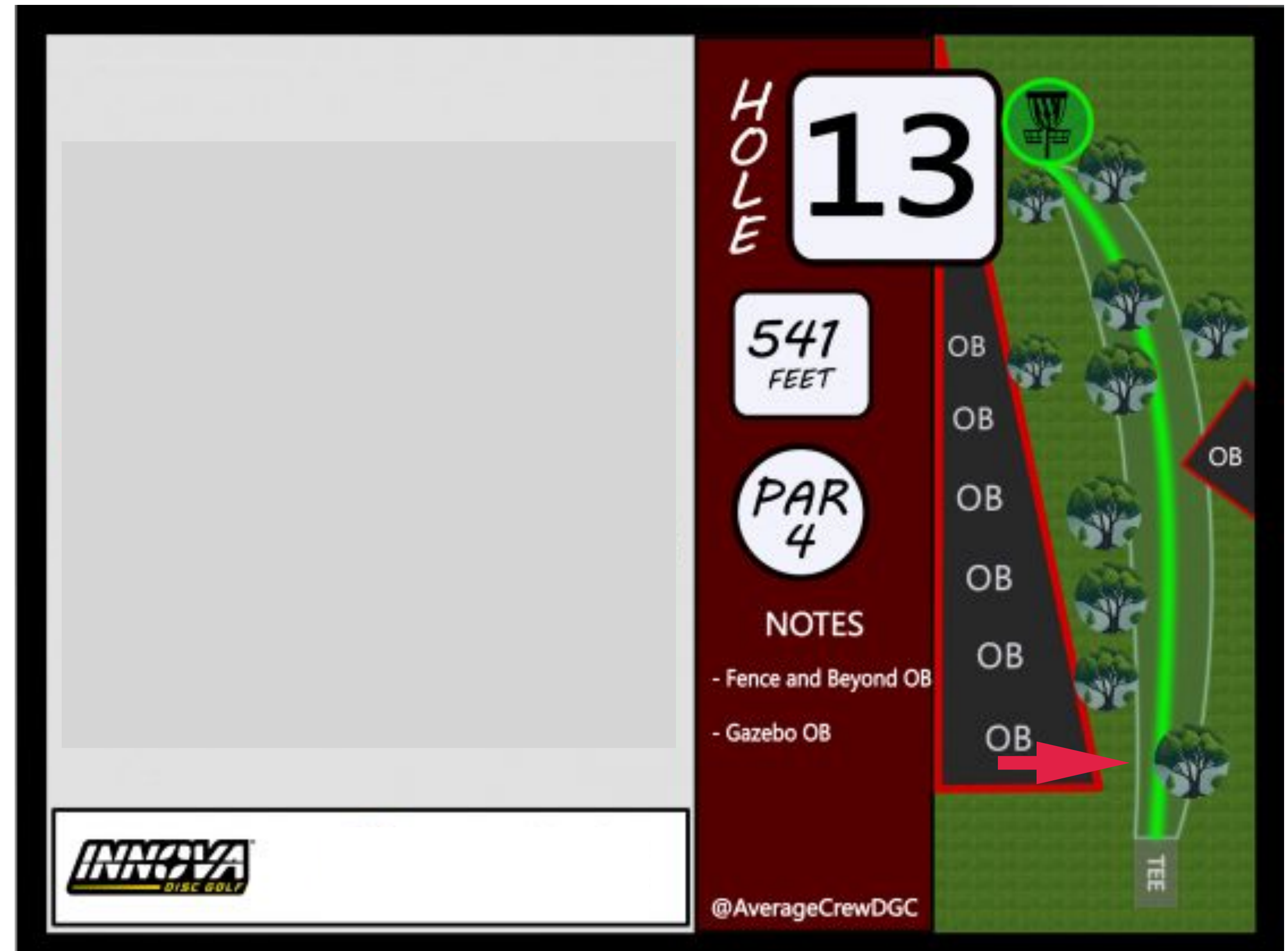
Out of Bounds

TEE

DZ

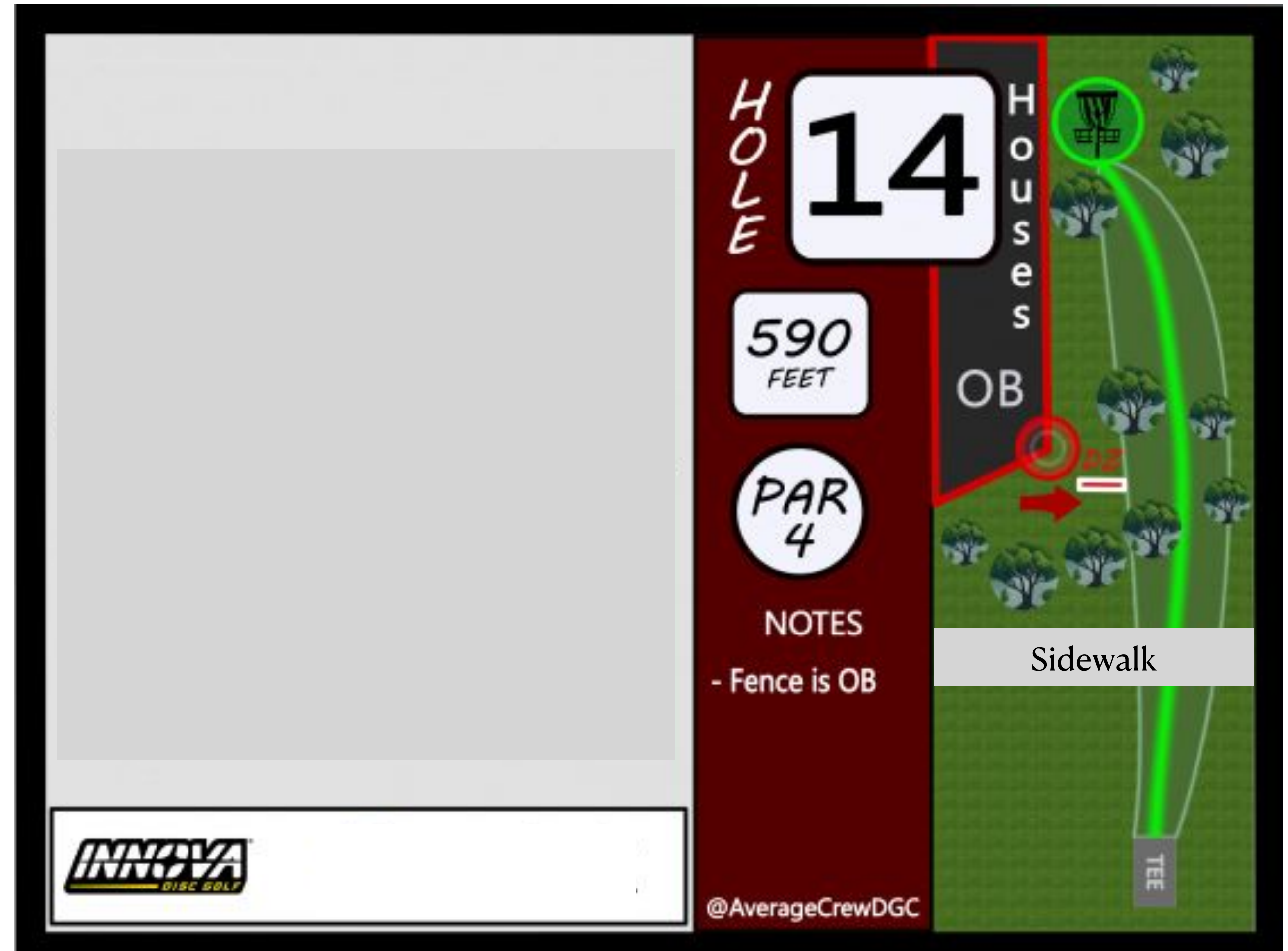
Nixon Open

- All areas on the left side over fence line are OB
- Gazebo is OB
- Sidewalk & beyond is OB
- Early Mando RT (fence pole)
- Missed mando re-tee



Nixon Open

- Missed Mando proceed to DZ
- Sidewalks are OB



Nixon Open

- School yard is OB
- Sidewalk and beyond is OB

HOLE 15

337 FEET

PAR 3

NOTES
- Fence, Sidewalk and Beyond OB

OB OB

OUT OF BOUNDS

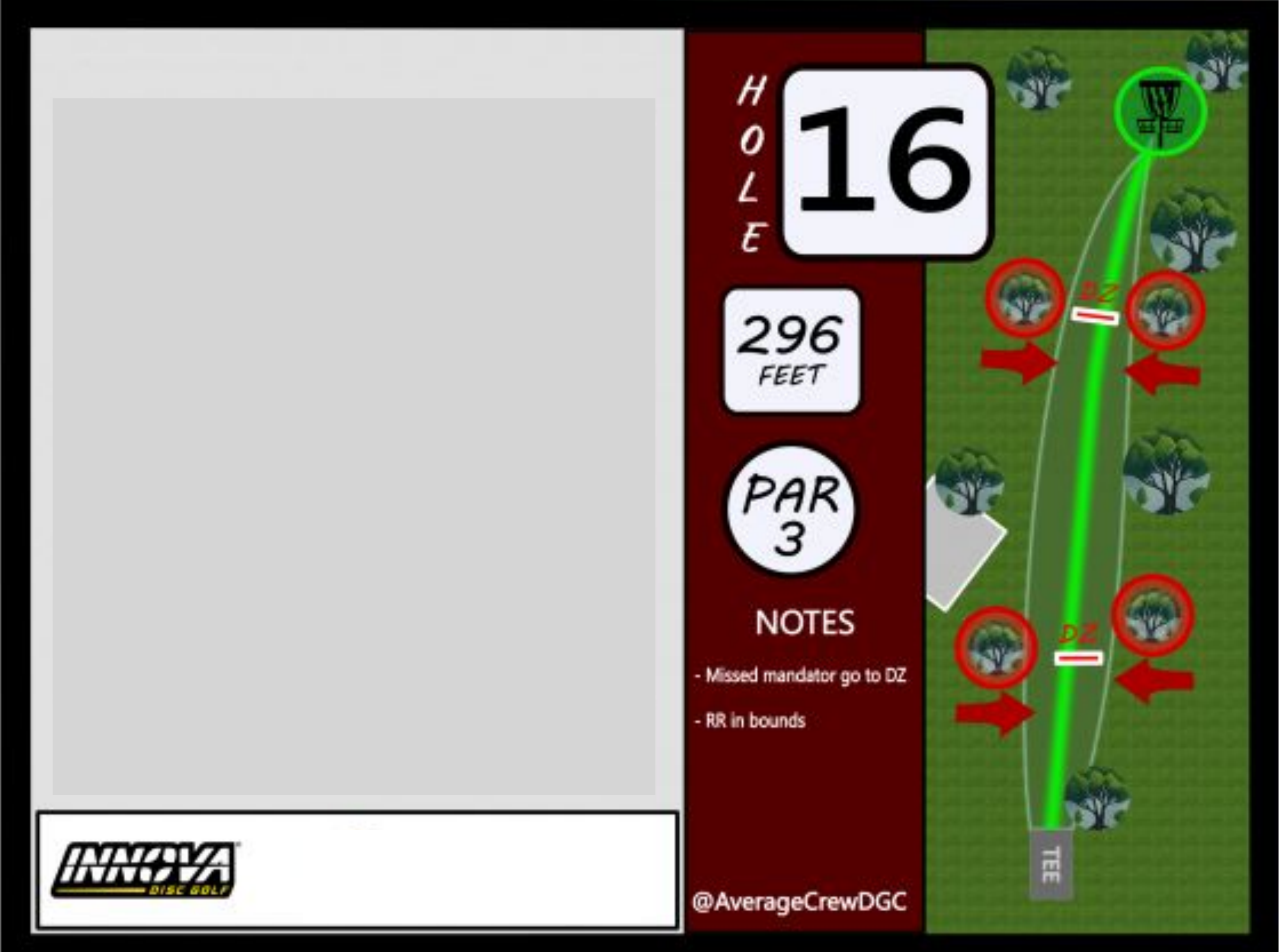
TEE

INNОВА DISC GOLF

@AverageCrewDGC

Nixon Open

- Missed DM's proceed to individual DZ's
- Concrete area surrounding bathroom is in-bounds



The diagram shows a disc golf hole layout for Hole 16. It is a 296-foot, Par 3 hole. The layout includes a tee box at the bottom, a fairway with a central green line, and a green with a hole at the top. Two double green zones (DZ) are marked with red circles and arrows, indicating where missed mandatory discs should land. The hole is surrounded by trees. The diagram is part of a larger graphic with a dark red background on the right side.

HOLE 16

296 FEET

PAR 3

NOTES

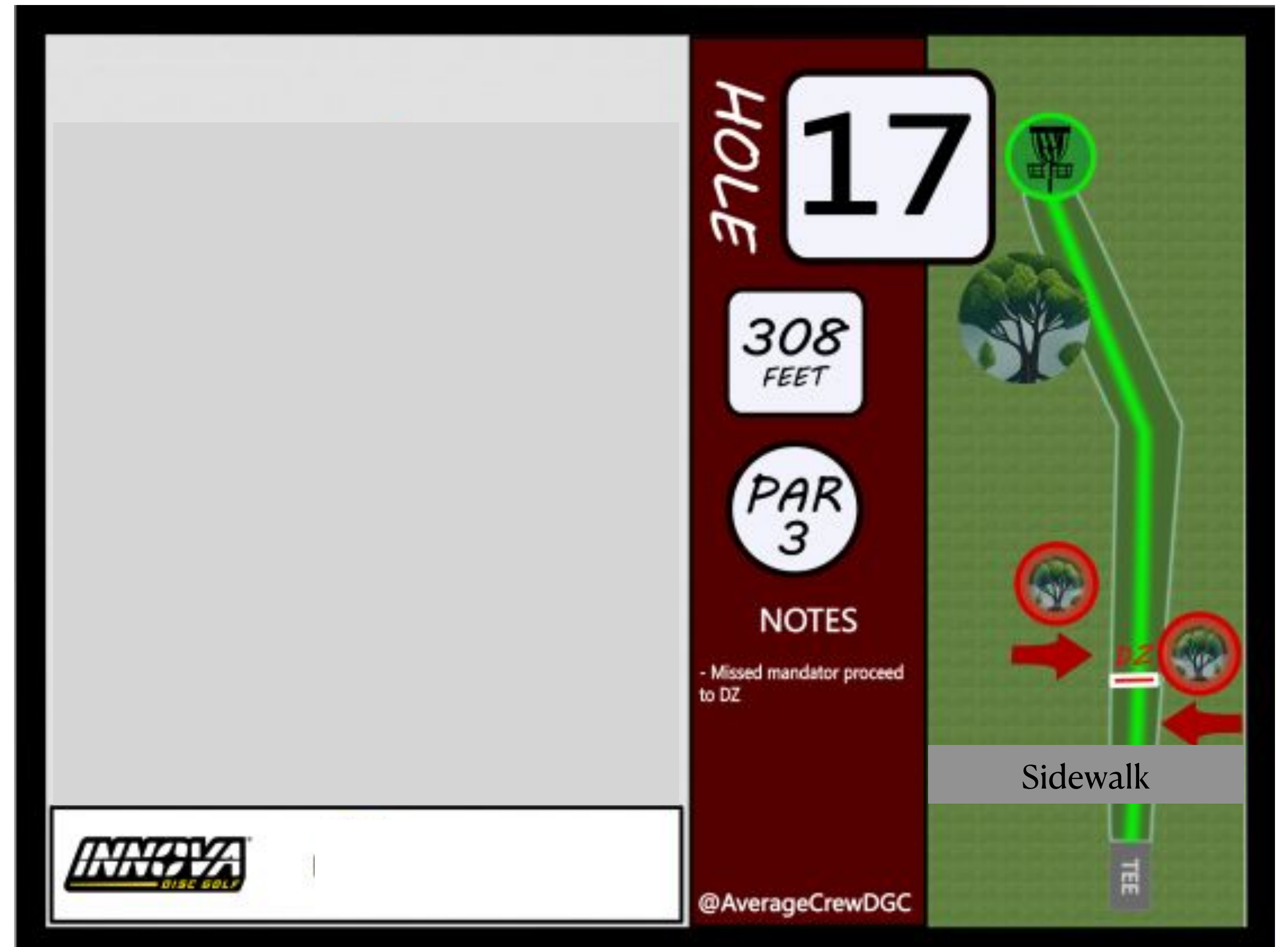
- Missed mandator go to DZ
- RR in bounds

INNNOVA DISC GOLF

@AverageCrewDGC

Nixon Open

- Missed DM proceed to DZ
- Sidewalk OB



Nixon Open

- Tee-pad is located in gazebo
- Outside C1 is played as hazard
- Painted line is considered part of hazard

HOLE 18

251 FEET

PAR 3

NOTES

- Outside of Circle 1 is considered a hazard
- Hazard = +1 Penalty

INNNOVA DISC GOLF

@AverageCrewDGC

Nixon Open

- Sidewalk and beyond is OB (by basket)
- Tower OB
- Holes 1 & 8 fairways are OB (not 1 & 18 as sign says)

HOLE 19

714 FEET

PAR 4

OB

Sidewalk

Tower

TEE

NOTES

- Sidewalk is OB
- Hole 1 and 18 Fairways are OB
- Towers are OB

INNOVA DISC GOLF

@AverageCrewDGC