

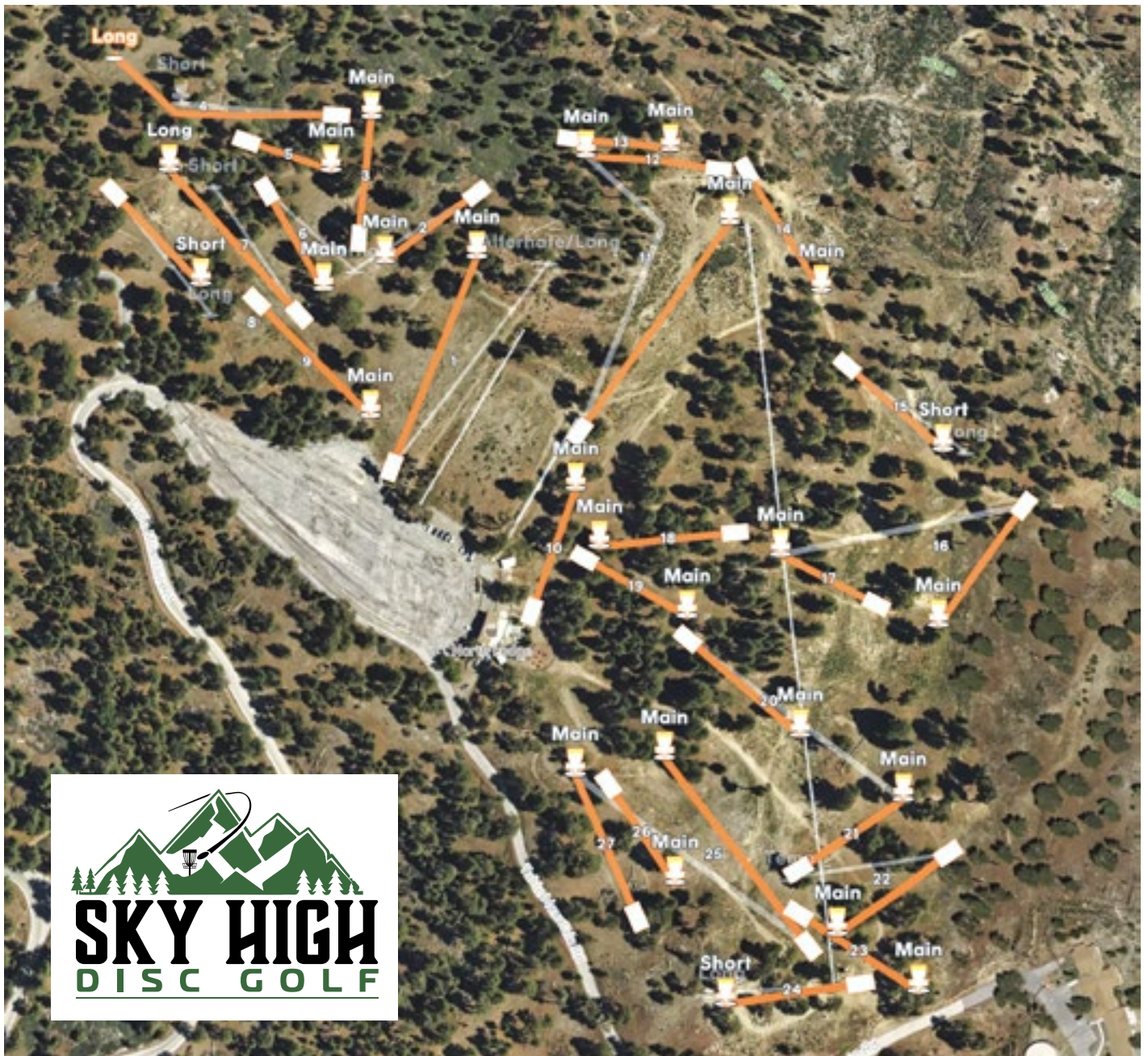


## 2025 CADDYBOOK

Short positions; 7,813' PAR 81

Long positions; 8,049' PAR 82

For a 360° VR tour, go to [DiscGolfVR360](https://discgolfvr360.com)







# Hole 1

**PAR 3**

515 ft

157 m

Hole 1 - Out of Bounds  
(Rule 806.02) along the  
right of the fairway marked  
with white string and white  
flags. Play from where the  
disc went out of bounds  
with a stroke.







# Hole 2

**PAR 3**

236 ft

72 m

Hole 2 - Ace run!





# Hole 3

**PAR 3**

265 ft

81 m

Hole 3 - Out of Bounds  
(Rule 806.02) along the left  
of the fairway marked with  
white string and white flags.  
Play from where the disc  
went out of bounds with  
a stroke. Careful not to go  
long down the hill.  
Most Ace'd hole.





# Hole 4

## PAR 3

321 ft

98 m

## PAR 4

478 ft

146 m

**Hole 4** - Short hole position on Saturday rounds. Long hole position on Sunday rounds.

## Wrightwood Market







# Hole 5

**PAR 3**

**186 ft**

**57 m**

Hole plays as an island. Out of Bounds (*Rule 806.02*) marked with white string and white flags. Play from where disc went out of bounds with a stroke. The OB line is 50' past the basket & 15' to the right. Mandy is to the left of the marked tree. Re-tee if you miss the mandy, with a stroke.

Susie, Christopher & Mark Horn







# Hole 6

**PAR 3**

238 ft

73 m

Hole 6 - The question is;  
Hyzer or Anhyzer...

Mike Farrell





# Hole 7

## PAR 3

407 ft

124 m

328 ft

100 m

**Hole 7** - First marked tree on the right, Mandy to the left. If you miss the mandy, play from the drop zone to the left of the mandy with a stroke.







# Hole 8

**PAR 3**

262 ft

80 m

Hole 8 - Only one hole  
position both rounds.  
Straight ahead.

Mountain Hardware







# Hole 9

**PAR 3**

331 ft

101 m

Hole 9 - Out of Bounds  
(Rule 806.02) along the  
asphalt parking lot. Play  
from where disc went out  
of bounds with a stroke.



UNDER ARMOUR







# Hole 10

**PAR 3**

259 ft

79 m

Hole 10 - Hole plays as an island. Out of Bounds (Rule 806.02) marked with white string and white flags. Play from where disc went out of bounds with a stroke.

Wrightwood Market







# Hole 11

**PAR 3**

**546 ft**

**166 m**

Hole 11 - Have the last player in the order stand 30-40' to the right of the tee to spot for discs that might fade left into the hillside. Lost disc (Rule 805.03), you have 3 mins. before you have to take a stroke & go to the drop zone just above the hole.

Mike 'Ronnie' Bloomfield







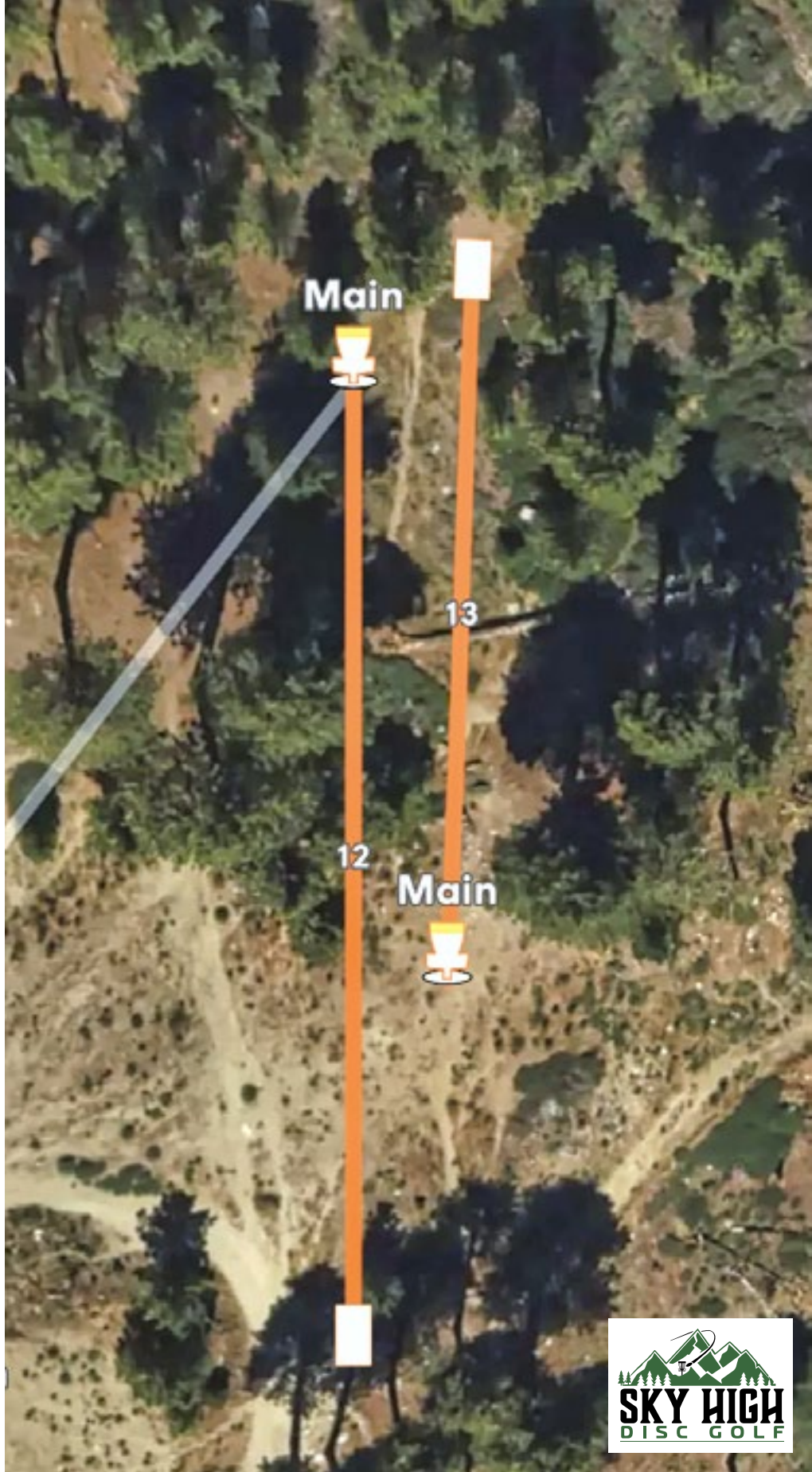
# Hole 12

**PAR 3**

283 ft

86 m

Hole 12 - Be careful of  
players on hole 13.







# Hole 13

**PAR 3**

213 ft

65 m

Hole 13 - Be careful of  
players on hole 12.







# Hole 14

**PAR 3**

301 ft

92 m

Hole 14 - Be careful of fading to the left and down the hill.

Wrightwood Fine Foods







# Hole 15

**PAR 3**

265 ft

81 m

Hole 15 - Short hole  
position on BOTH rounds.

Eric Audet







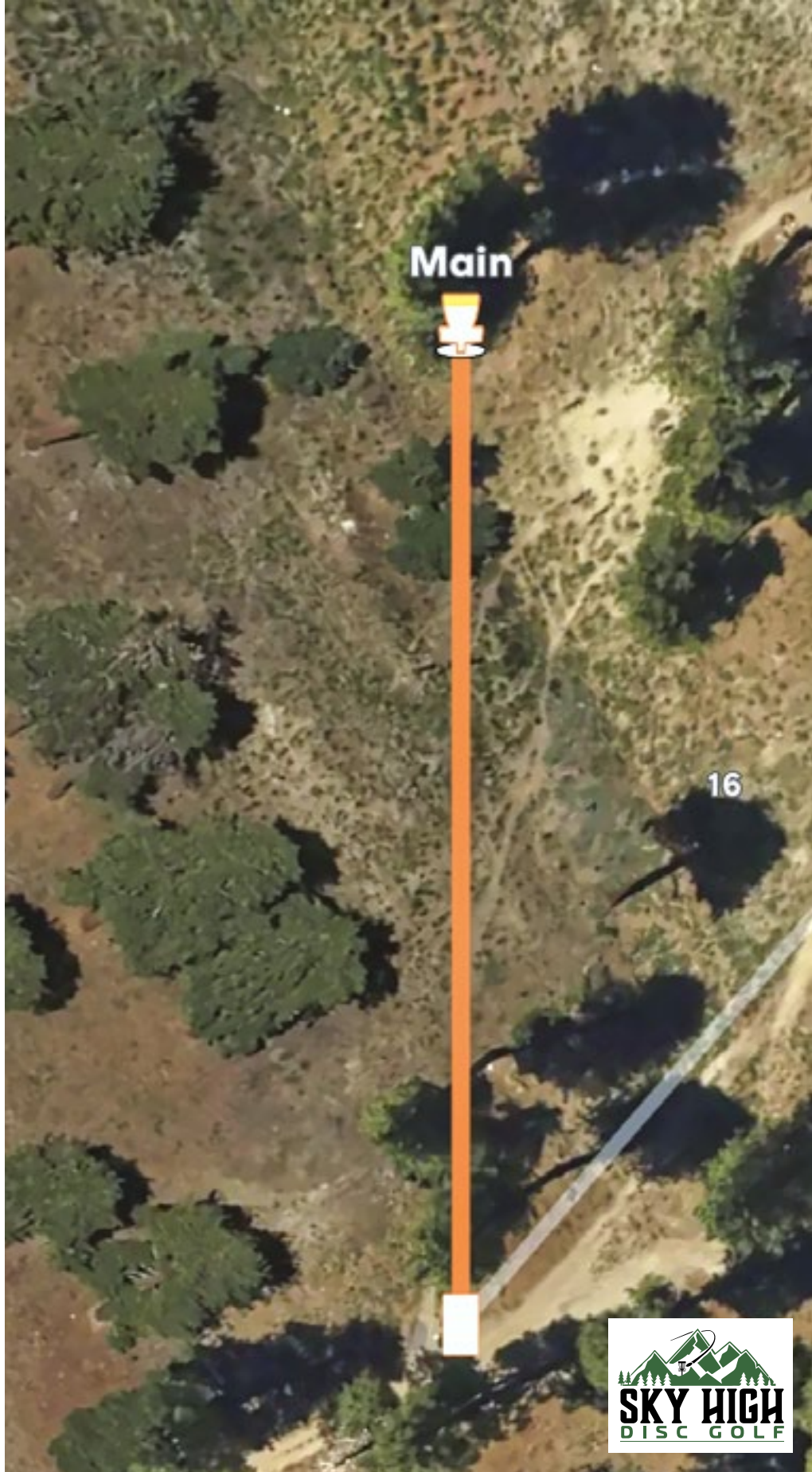
# Hole 16

**PAR 3**

305 ft

93 m

Hole 16 - Basket sits on a slope with hard-pack dirt, perfect conditions for a roll-away







# Hole 17

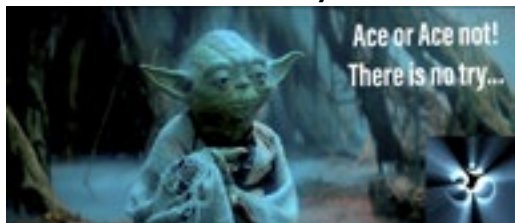
**PAR 3**

217 ft

66 m

Hole 17 - Another Ace run...  
Watch out for the ski lift chair. Discs have been stuck up there. And, if you haven't bought into the Ace Pool, what are you waiting for, an Ace. Just ask Om ;-)

OM Mourya







# Hole 18

**PAR 3**

277 ft

84 m

Hole 18 - Hole 10 Out of Bounds (*Rule 806.02*) is 60' past the basket and marked with white string and white flags. Play from where it went OB with a stroke. The basket sits on a slope with hard pack dirt, perfect for skippys and roll aways.

The Family of Bill & Marybeth Maury-Holmes







# Hole 19

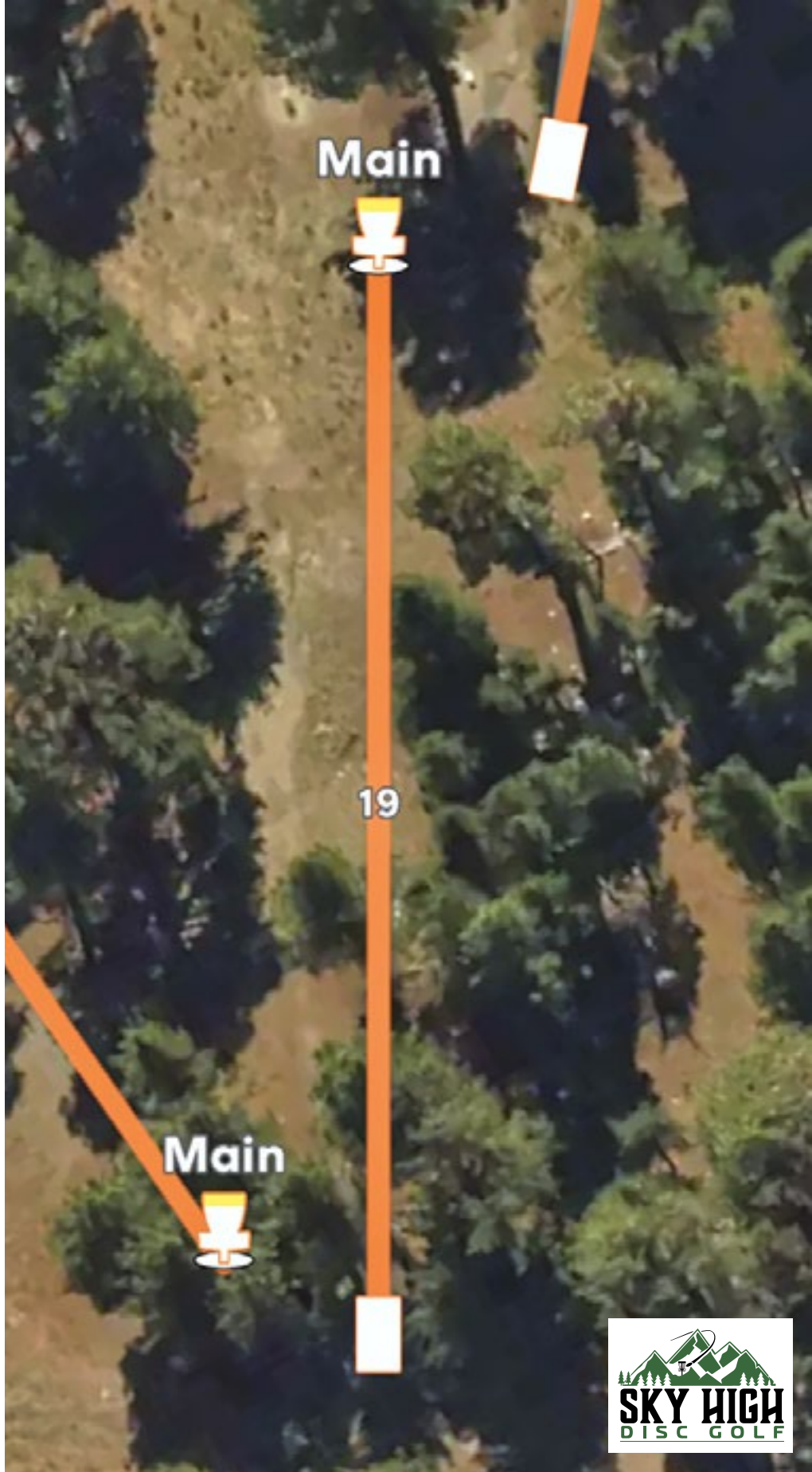
**PAR 3**

235 ft

72 m

Hole 19 - Start of the last 9...

 **TECHNICOLOR**  
PRINTING



**INNOVA**  
DISC GOLF





# Hole 20

**PAR 3**

246 ft

75 m

Hole 20 - Walk up the mountain to tee 21. Take your time, don't kill yourself. A can of oxygen might be a good way to recover from the hike up the hill.

Mountain Hardware







# Hole 21

**PAR 3**

246 ft

75 m

Hole 21 - Another Ace run.  
But, be careful of fading to  
the left down the hill.

Eddie Limbaga  
Team RDP - EXP Realty  
& The Sport Sim







# Hole 22

**PAR 3**

264 ft

80 m

Hole 22 - Be careful of  
players on tee 23.











# Hole 24

**PAR 3**

259 ft

79 m

Hole 24 - Mandy to the left of the ski lift. If you miss the mandy, re-tee with a stroke.











# Hole 26

**PAR 3**

222 ft

68 m

Hole 26 - Keep an eye out  
for players on holes 25 & 27.

Jerry & Jennifer Janssen and Birdie







# Hole 27

**PAR 3**

290 ft

88 m

Hole 27 - Out of Bounds  
(Rule 806.02) along the road  
to the left of the fairway.  
Road and beyond OB. Play  
from where the group  
thinks the disc went out of  
bounds.

**DiscGolf VR360**  
C H A N N E L

