

Bomber Mountain Bash 2025

Hole 1: 291 ft; Par 3. Road and beyond OB. Inside soccer field fence OB.

Hole 2: 349 ft; Par 3. Inside soccer field fence OB. Behind fence long of basket OB.

Hole 3: 201 ft; Par 3. Inside soccer field fence OB. Water hazard in irrigation ditch. Left of barbed wire fence OB.

Hole 3A: 210 ft; Par 3. Hazard Island Hole. Any throw that lands within the hazard is assessed a penalty stroke. Fence on left OB. Parking lot OB.

Hole 4: 457 ft; Par 4. All concrete and pavement is OB. Discs that come to rest on dome building are OB. DO NOT RETRIEVE DISCS ON THE DOME. Left of fence OB.

Hole 5: 252 ft; Par 3. Inside softball field fence OB. Left barbed wire fence OB.

Hole 5A: 260 ft; Par 3. Inside softball field fence OB. Left barbed wire fence OB. Gate long of basket OB.

Hole 6: 506 ft; Par 4. Inside softball field fence OB. Irrigation ditch water hazard.

Hole 7: 335 ft; Par 3. Irrigation ditch water hazard. Left of irrigation ditch OB.

Hole 8: 443 ft; Par 4. Left of barbed wire fence OB.

Hole 9: 287 ft; Par 3. Fence beyond basket OB. Irrigation ditch water hazard. Marked OB beyond ditch extends from irrigation ditch culvert to barbed wire fence.

Hole 10: 384 ft; Par 3. Irrigation ditch water hazard. Left of irrigation ditch OB.

Hole 11: 428 ft; Par 3. Inside softball field fence OB. Irrigation ditch water hazard.

Hole 12: 197 ft; Par 3. All concrete and roads OB. Culvert near basket is in bounds.

Hole 13: 173 ft; Par 3. Left of barbed wire fence OB. Sidewalk and beyond behind basket OB. Green house OB.

Hole 14: 347 ft; Par 3. All roads and sidewalks OB. Grass between parking lot and road OB.

Hole 15: 281 ft; Par 3. Parking lot and curb OB. Sidewalks in bounds. Inside chicken coop OB.

Hole 16: 195 ft; Par 3. Inside chicken coop and on road or curb OB.

Hole 17: 348 ft; Par 3. Road and curb OB. Grass left of road OB. Inside chicken coop OB.

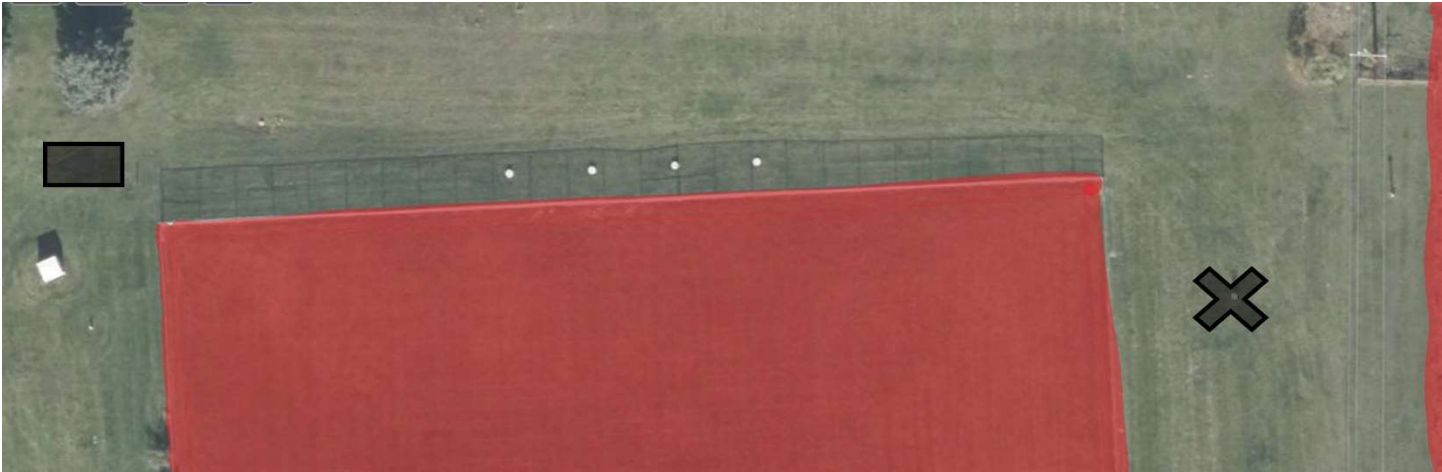
Hole 18: 196 ft; Par 3. Road and curb OB.

Bomber Mountain Bash 2025

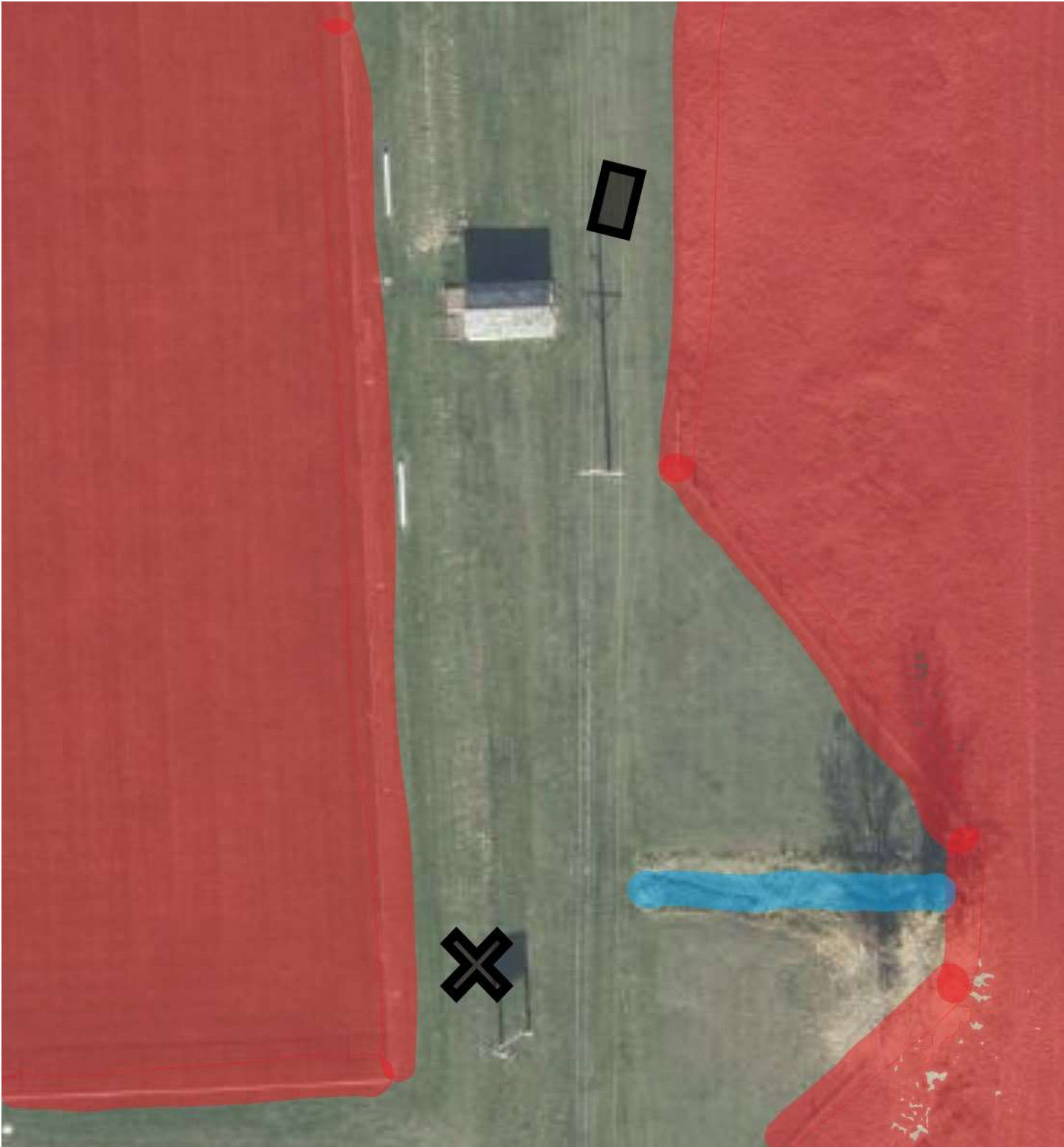
Hole 1: 291 ft; Par 3. Road and beyond OB. Inside soccer field fence OB.



Hole 2: 349 ft; Par 3. Inside soccer field fence OB. Behind fence long of basket OB.



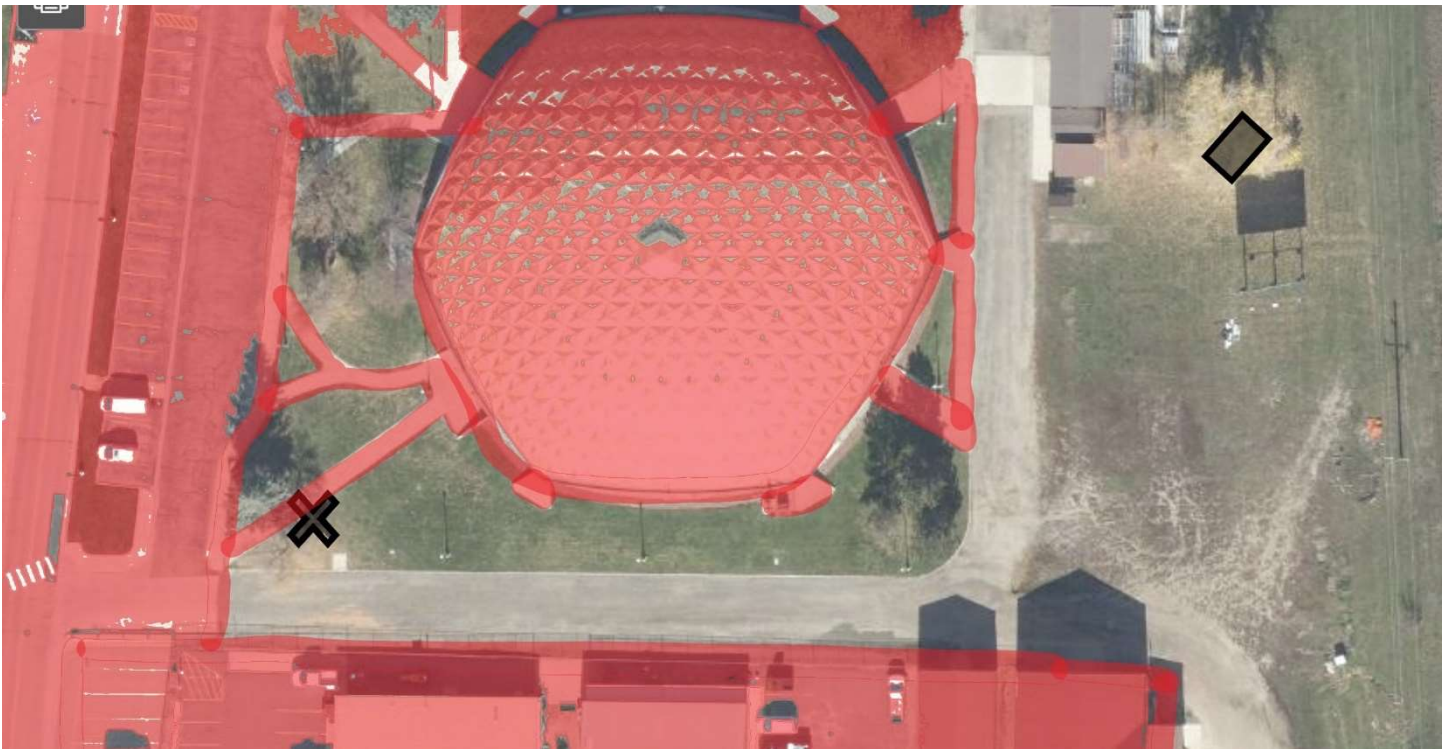
Hole 3: 201 ft; Par 3. Inside soccer field fence OB. Water hazard in irrigation ditch. Left of barbed wire fence OB.



Hole 3A: XX ft; Par 3. Hazard Island Hole. Any throw that lands within the hazard is assessed a penalty stroke. Fence on left OB. Parking lot right OB.



Hole 4: 457 ft; Par 4. All concrete and pavement is OB. Discs that come to rest on dome building are OB. DO NOT RETRIEVE DISCS ON THE DOME. Left of fence OB.



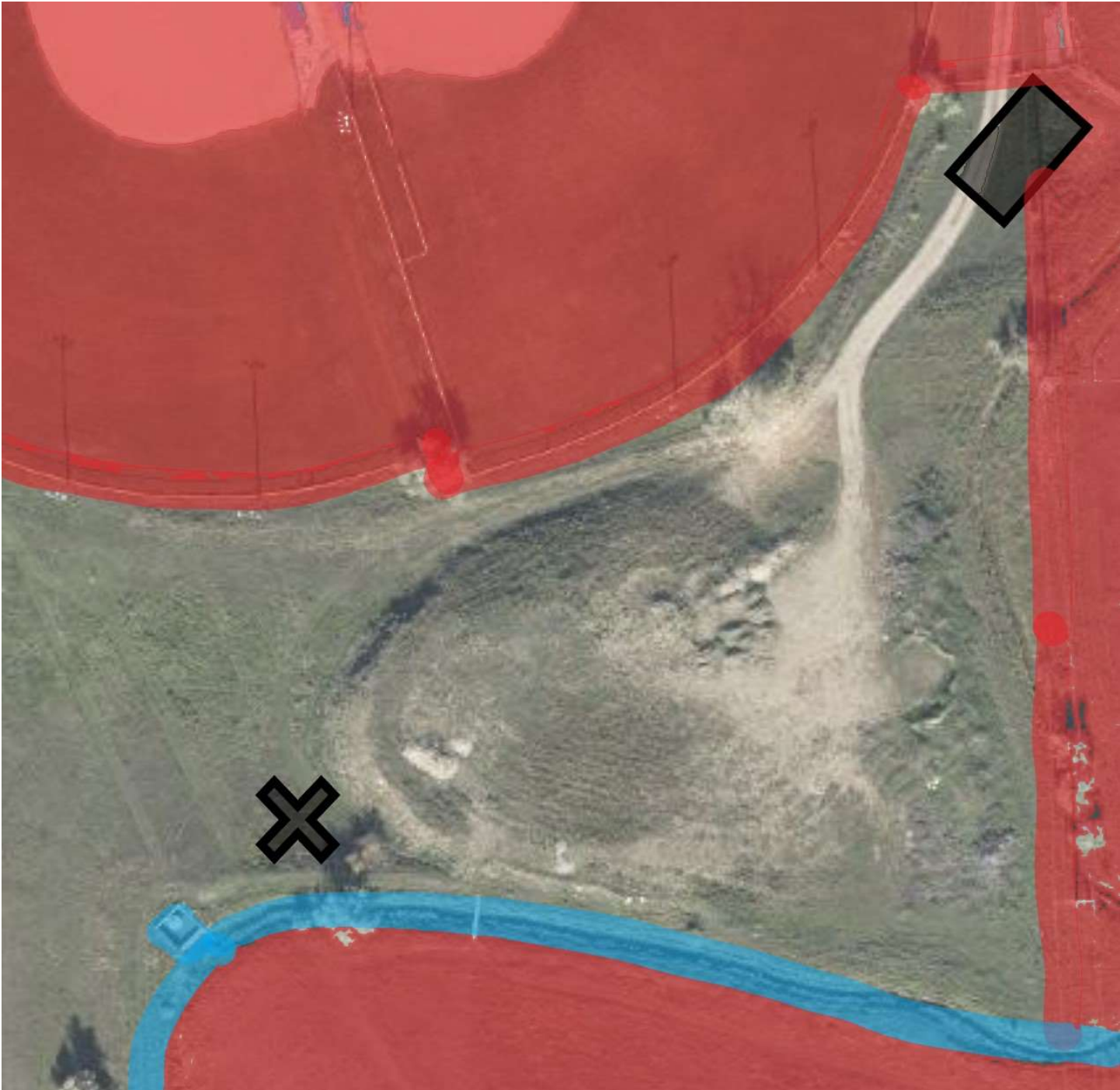
Hole 5: 252 ft; Par 3. Inside softball field fence OB. Left barbed wire fence OB.



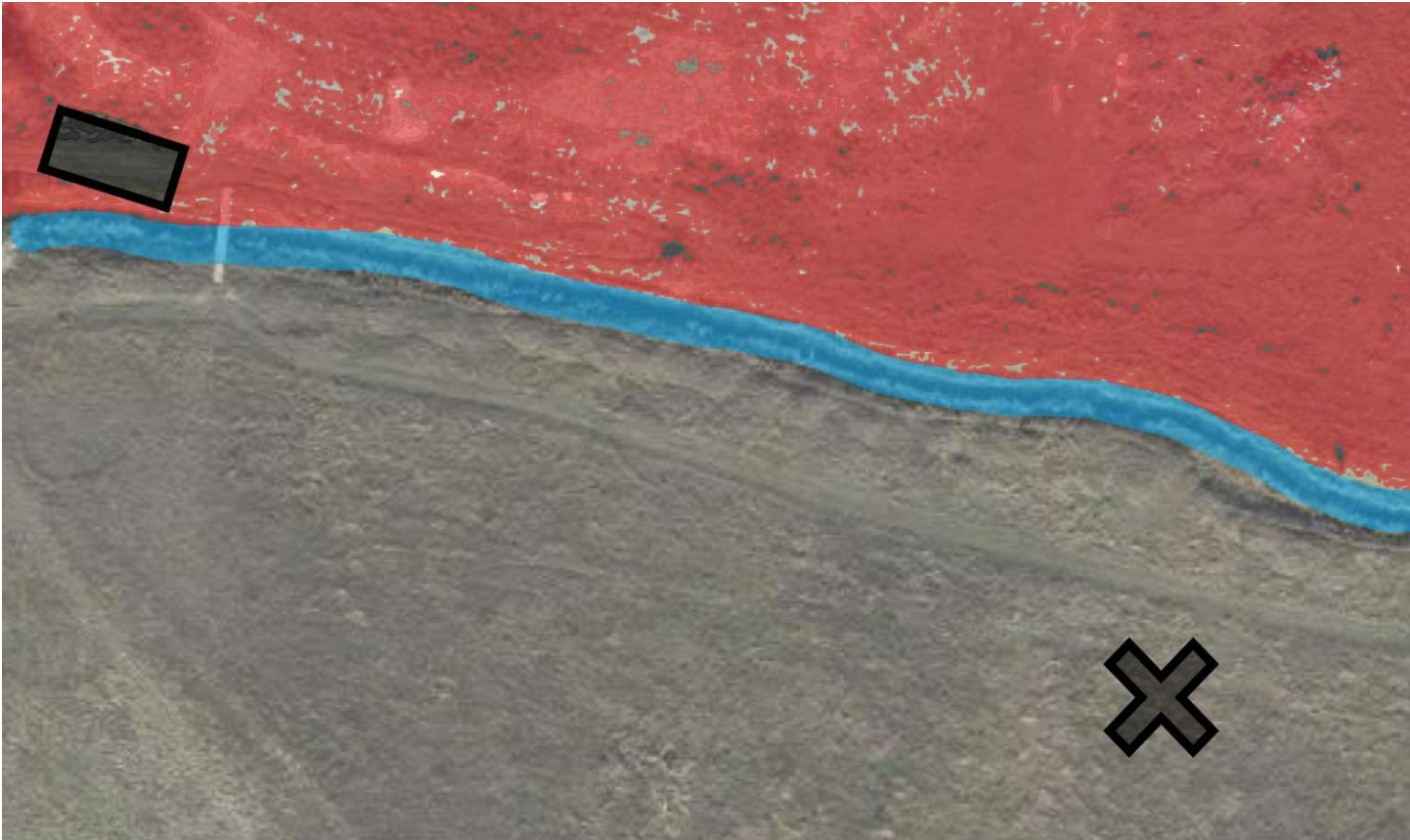
Hole 5A: 260 ft; Par 3. Inside softball field fence OB. Left barbed wire fence OB. Gate long of basket OB.



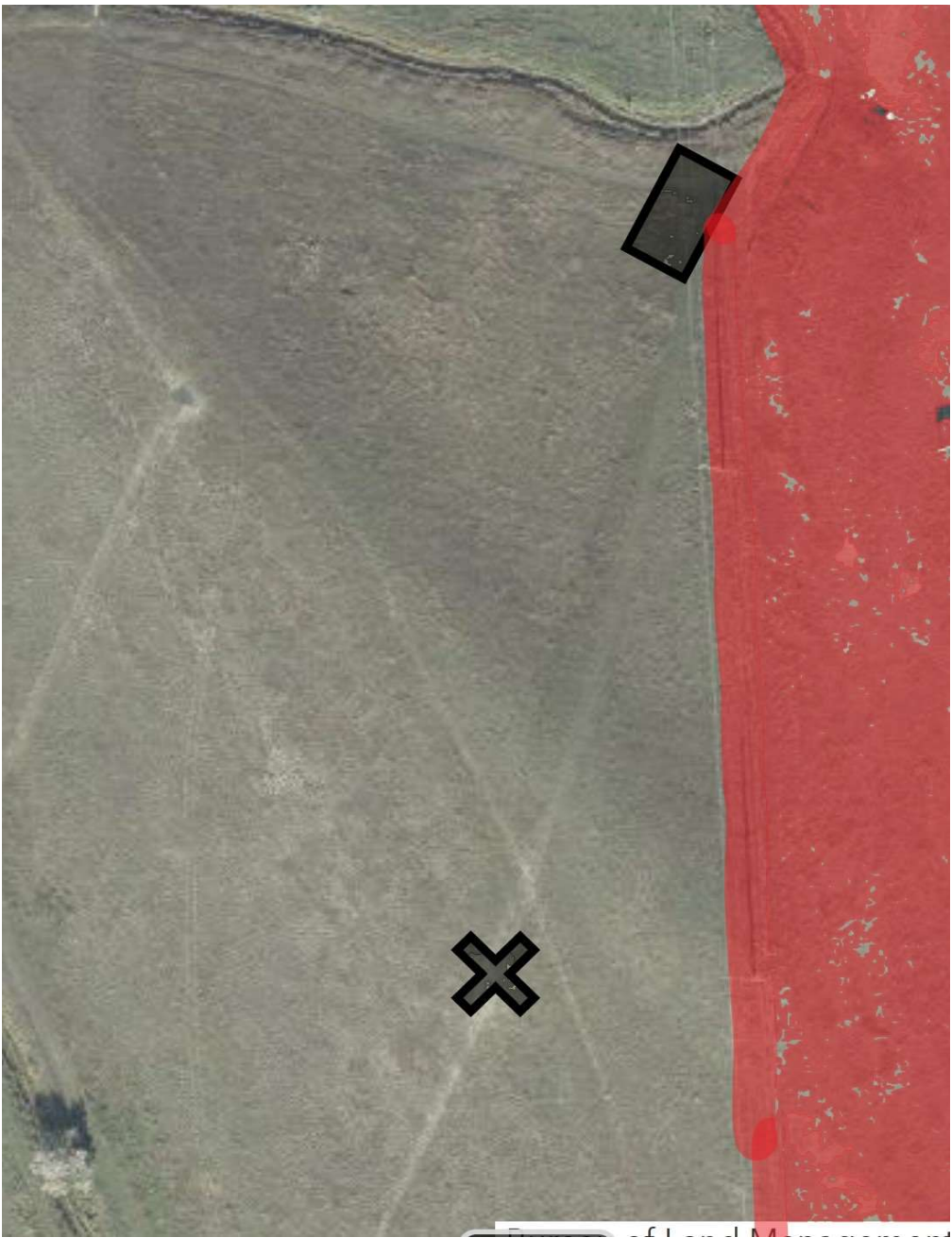
Hole 6: 506 ft; Par 4. Inside softball field fence OB. Irrigation ditch water hazard.



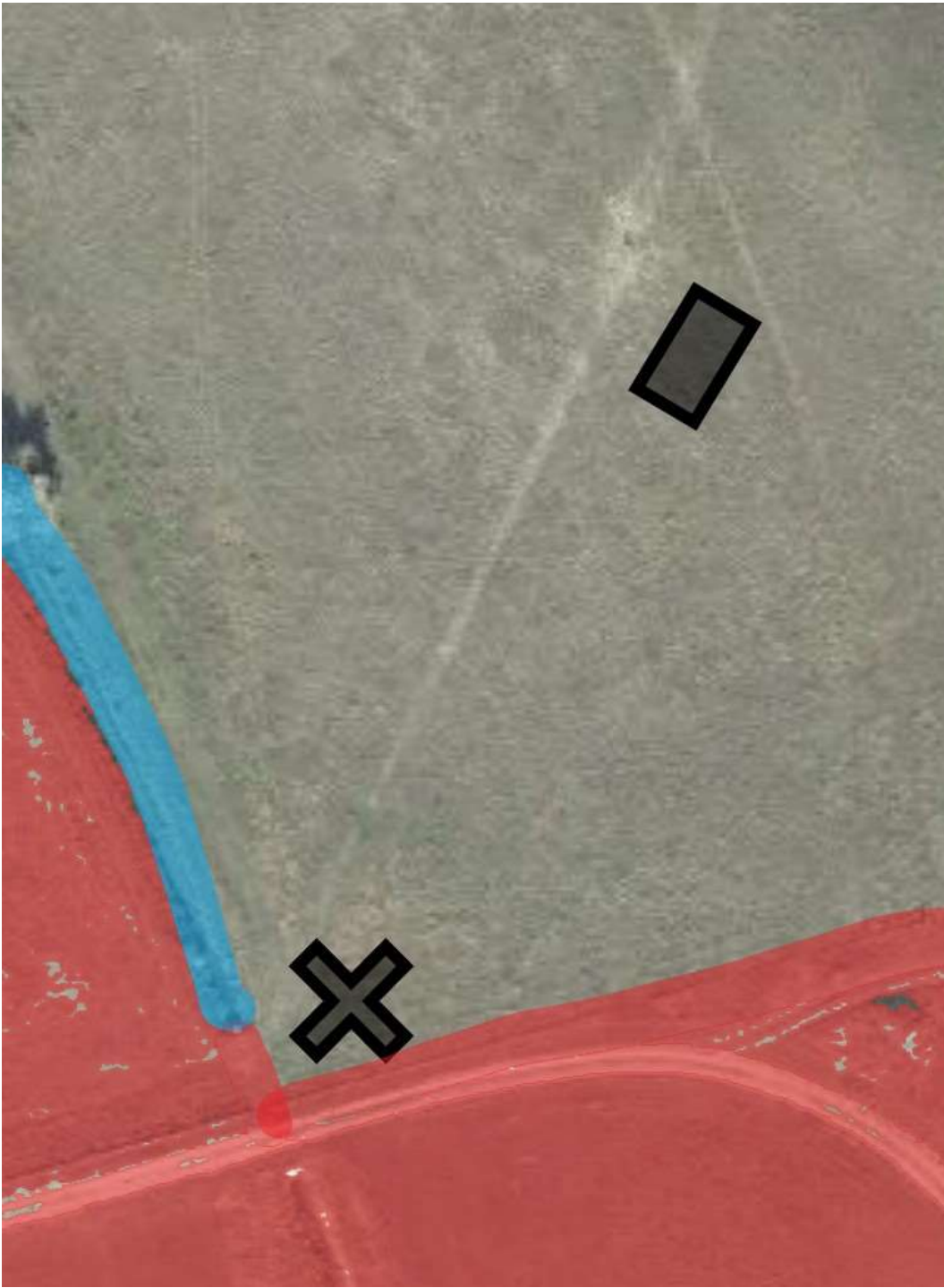
Hole 7: 335 ft; Par 3. Irrigation ditch water hazard. Left of irrigation ditch OB.



Hole 8: 443 ft; Par 4. Left of barbed wire fence OB



Hole 9: 287 ft; Par 3. Fence beyond basket OB. Irrigation ditch water hazard. Marked OB beyond ditch extends from irrigation ditch culvert to barbed wire fence.



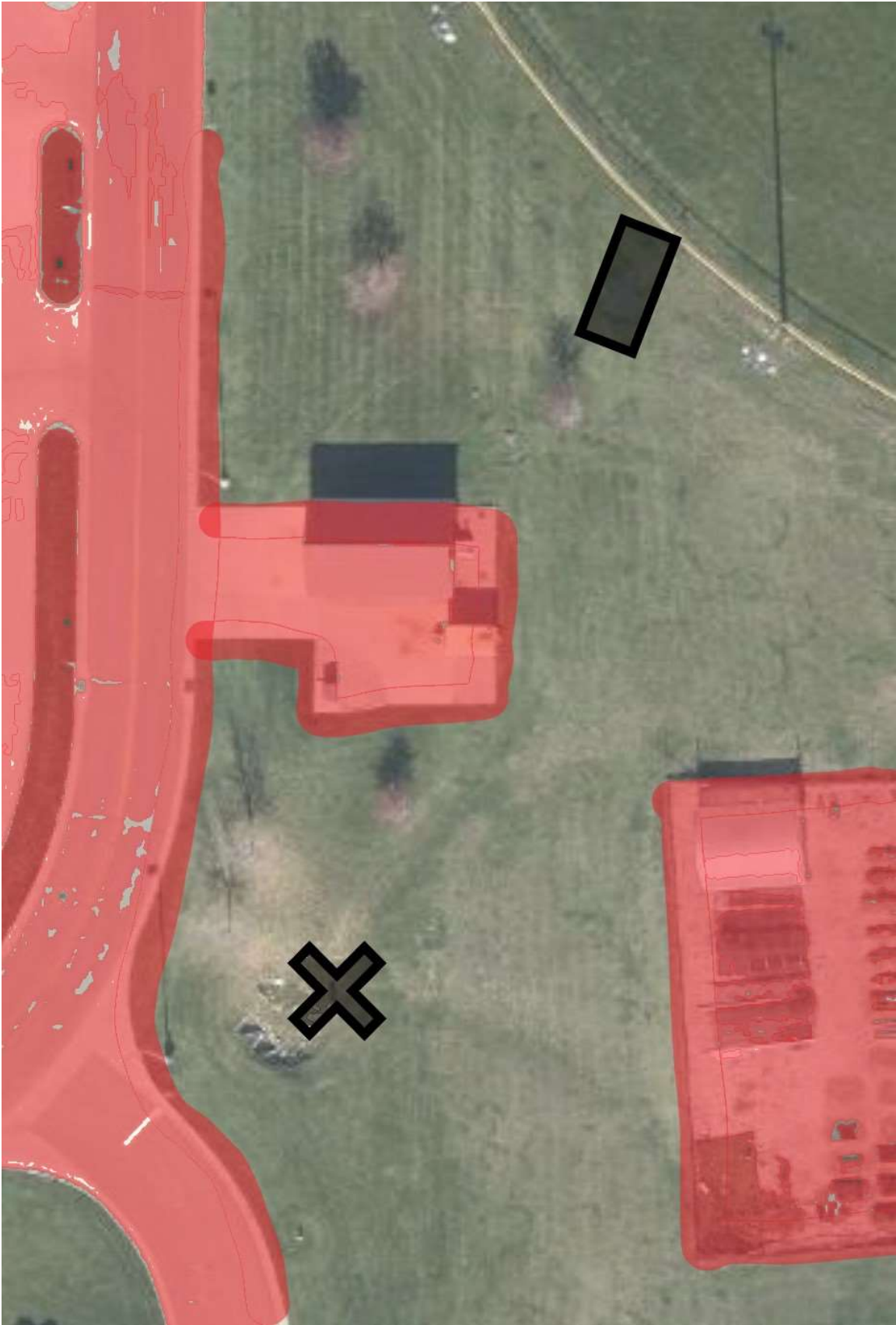
Hole 10: 384 ft; Par 3. Irrigation ditch water hazard. Left of irrigation ditch OB.



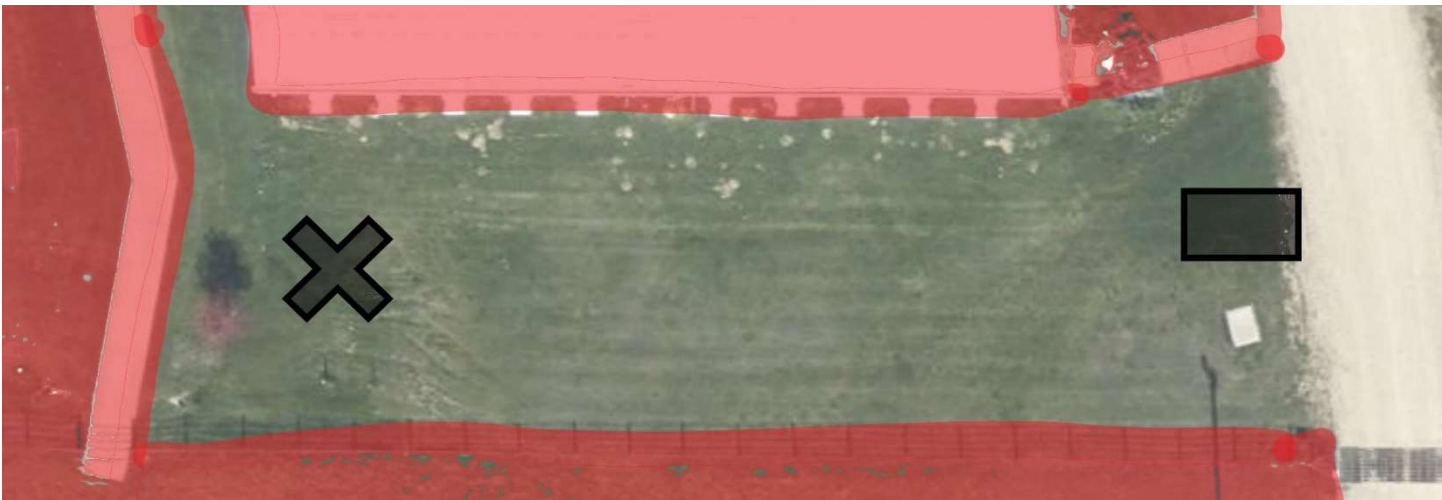
Hole 11: 428 ft; Par 3. Inside softball field fence OB. Irrigation ditch water hazard.



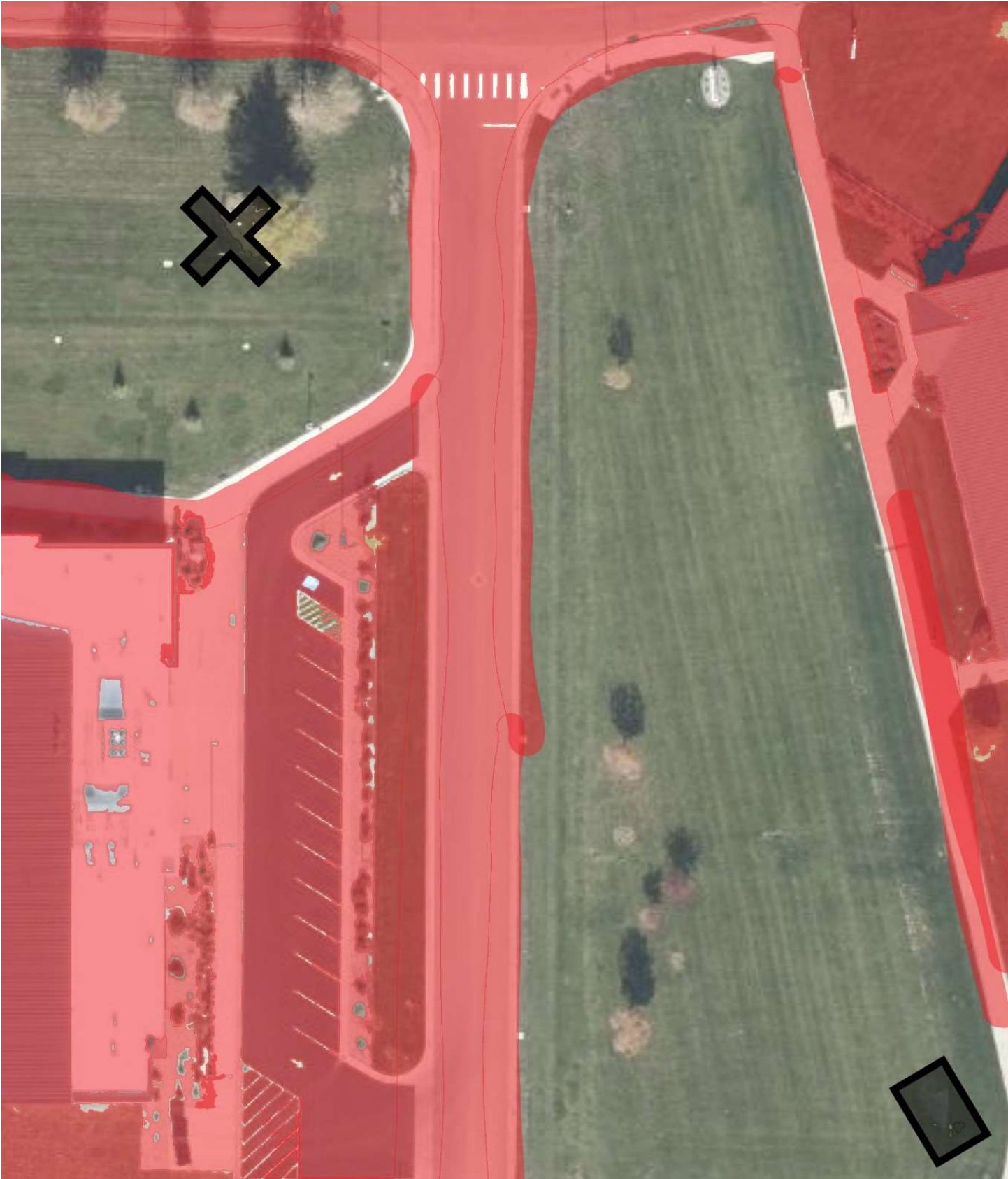
Hole 12: 197 ft; Par 3. All concrete and roads OB. Culvert near basket is in bounds.



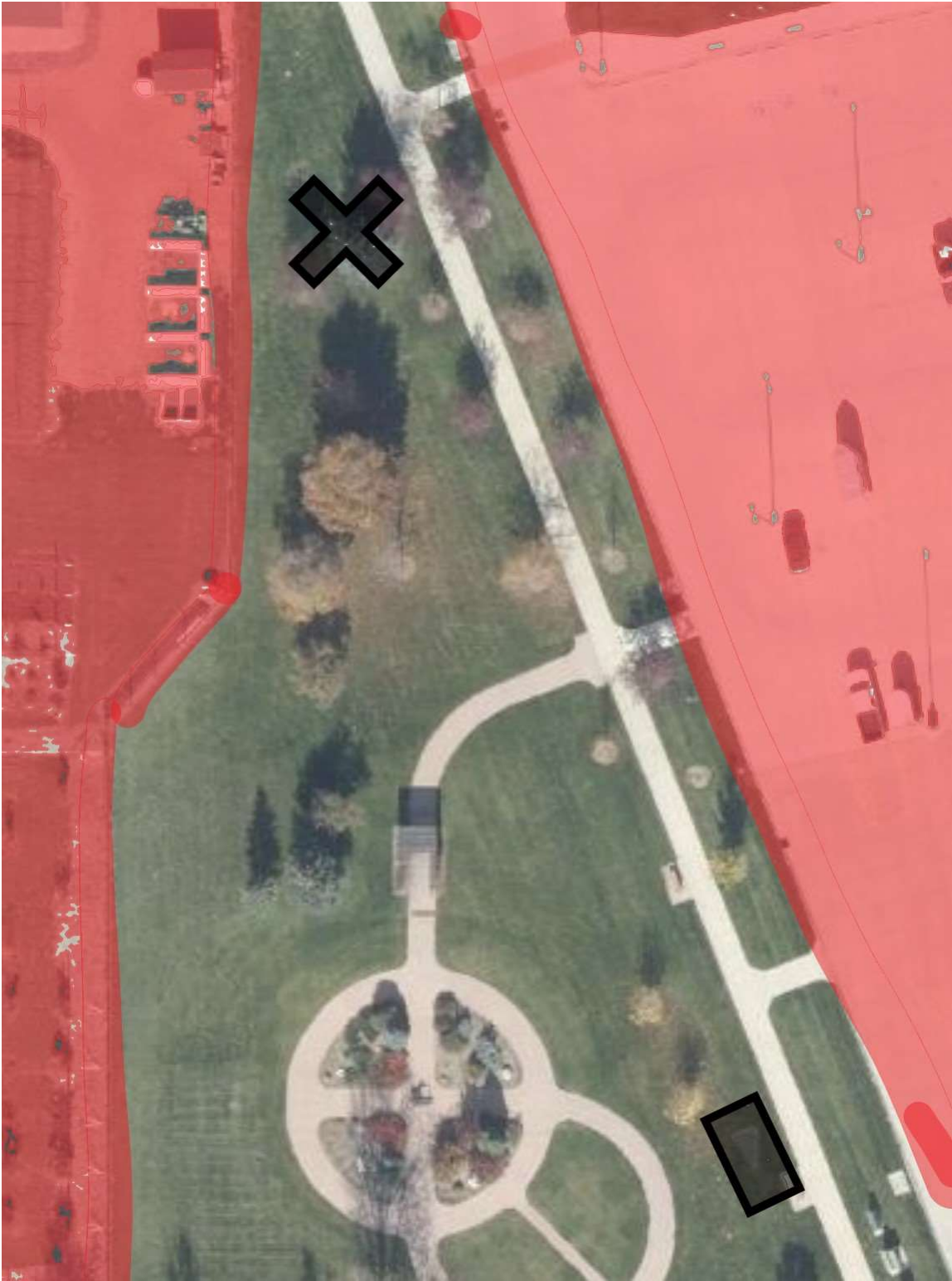
Hole 13: 173 ft; Par 3. Left of barbed wire fence OB. Sidewalk and beyond behind basket OB. Green house OB.



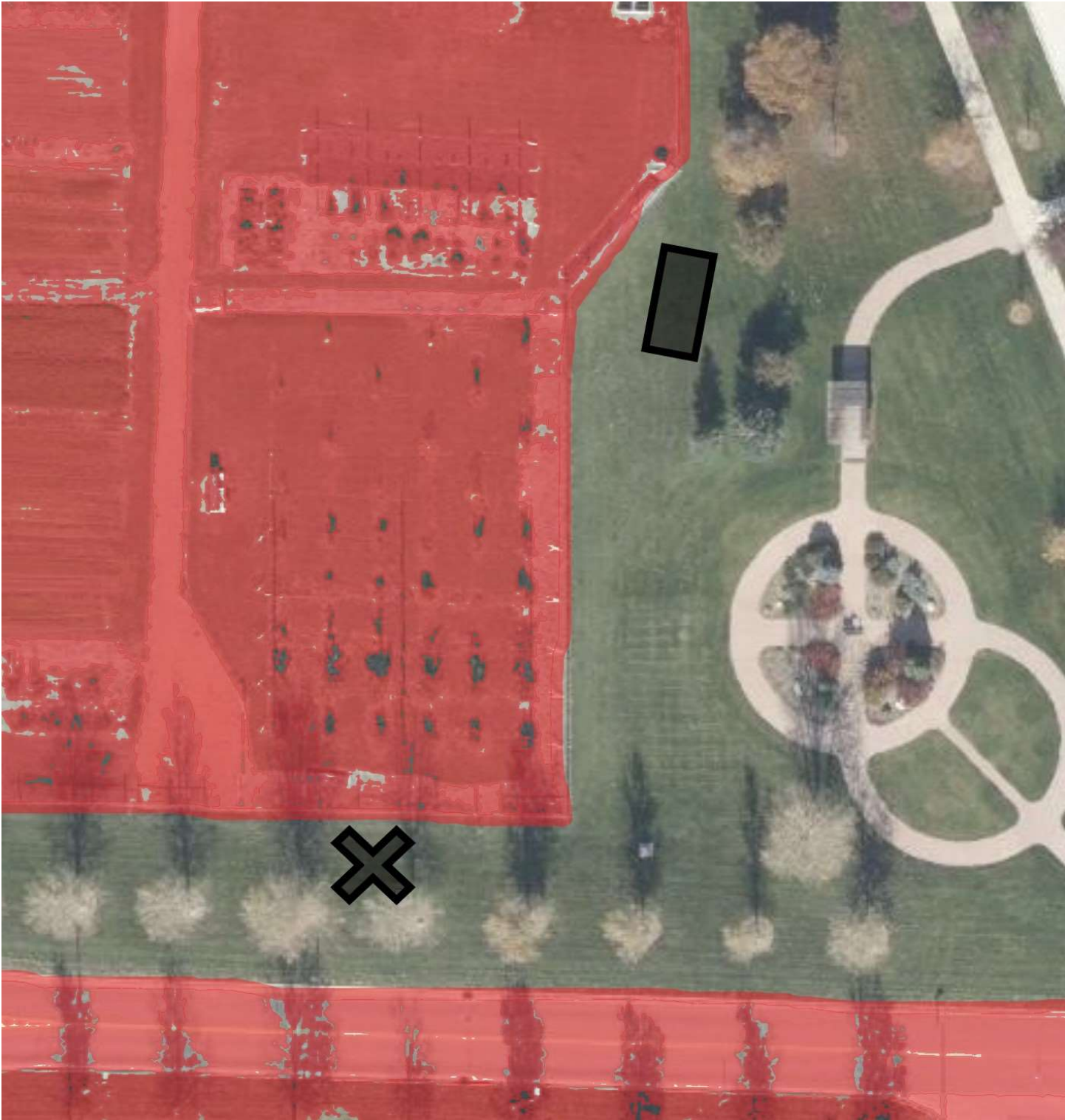
Hole 14: 347 ft; Par 3. All roads and sidewalks OB. Grass between parking lot and road OB.



Hole 15: 281 ft; Par 3. Parking lot and curb OB. Sidewalks in bounds. Inside chicken coop OB.



Hole 16: 195 ft; Par 3. Inside chicken coop and on road or curb OB.



Hole 17: 348 ft; Par 3. Road and curb OB. Grass left of road OB. Inside chicken coop OB.



Hole 18:196 ft; Par 3. Road and curb OB.

