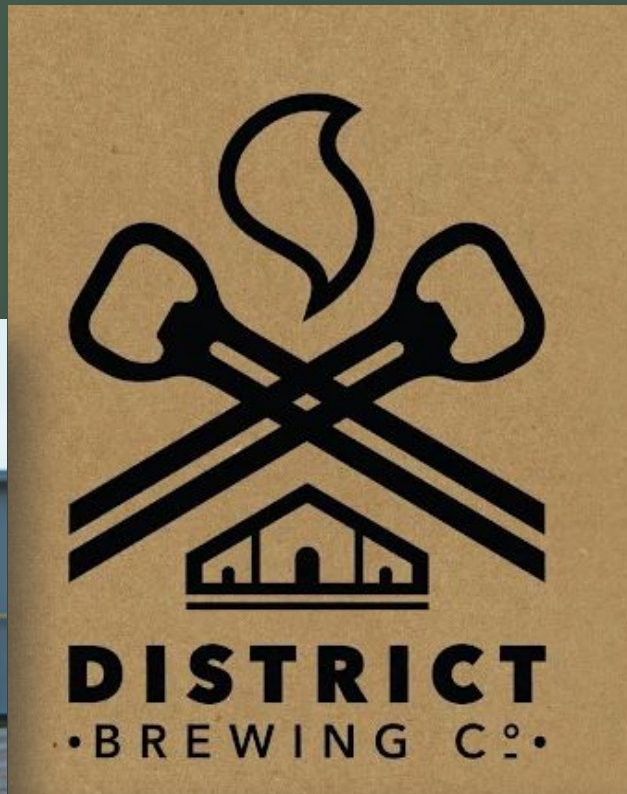
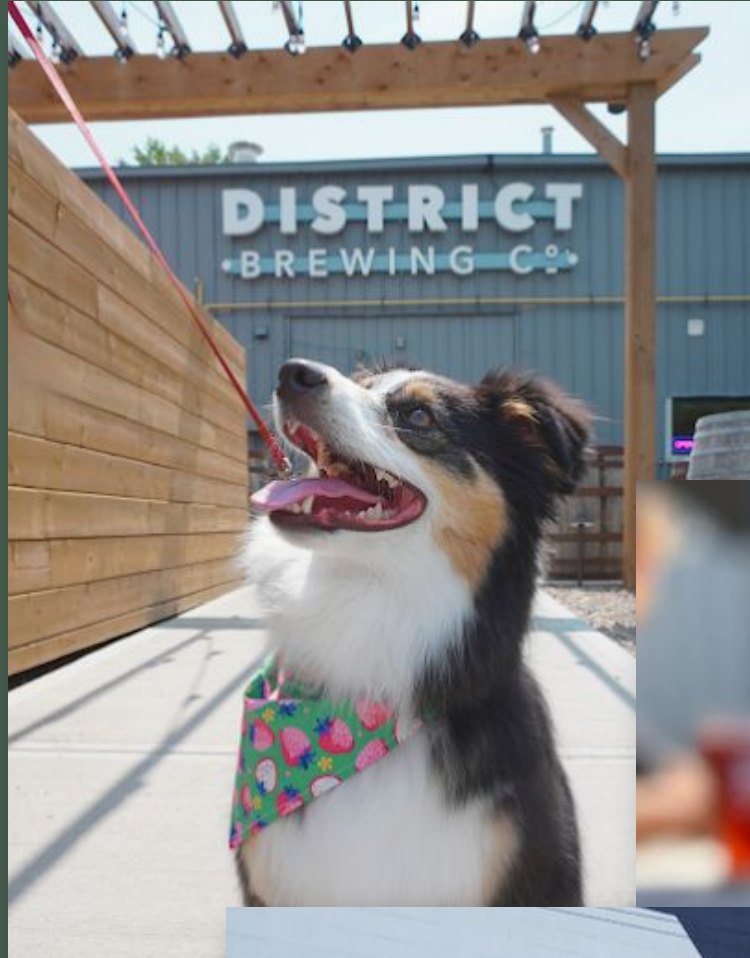




District Brewing Presents The 2025 Tommy Douglas Open

**Supported by
Innova Caddy Book**

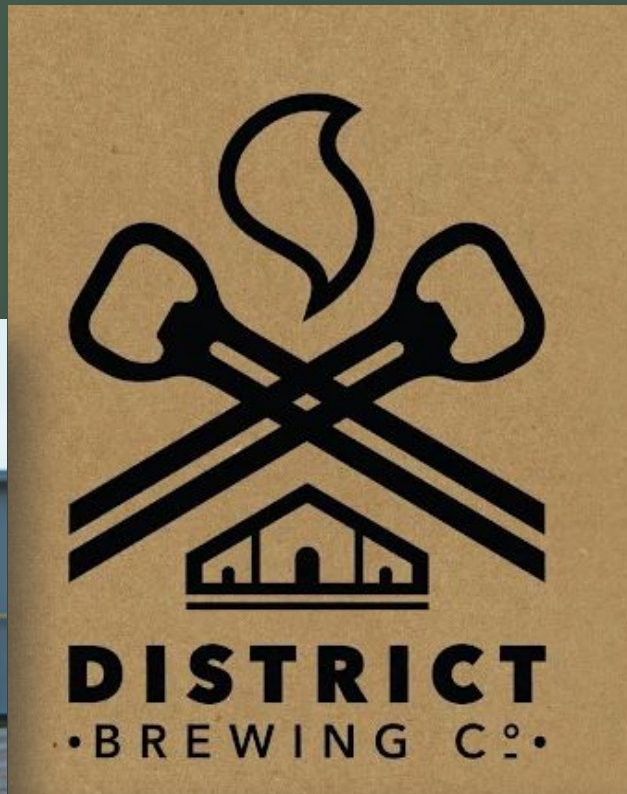
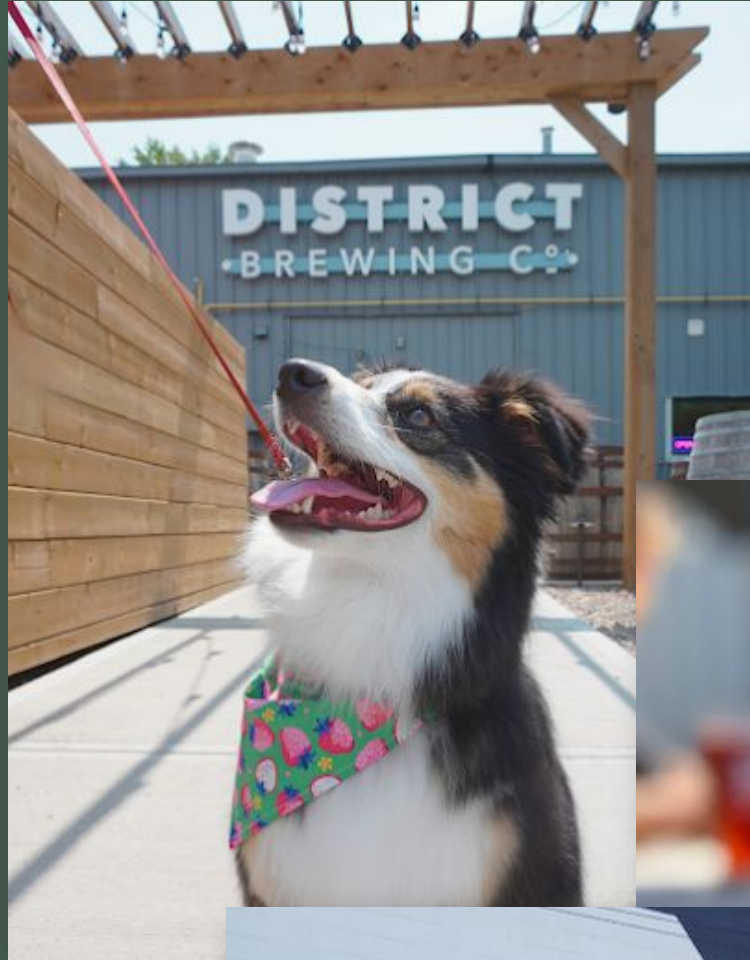




District Brewing Co.

District Brewing Company is an award winning, Regina-based, manufacturer of premium craft beer. They brew a diverse variety of styles that can accommodate all tastes; that includes ales, lagers, ciders and even non-alcoholic beverages for all the drinkers in your life.

For years District has been supporters of disc golf in Regina. Their taphouse is a fixture of the Warehouse district in Regina. Even better, their patio has some Black Hole baskets, so you can putt and drink with your friends!



District Brewing Co.

Support our Sponsors!

Early Check In & Social Night

Friday - 5PM-10PM

All ages welcome until 8pm

1555 8th Ave Regina, SK

Beer Gardens & Canteen

Saturday - (11am-7pm)

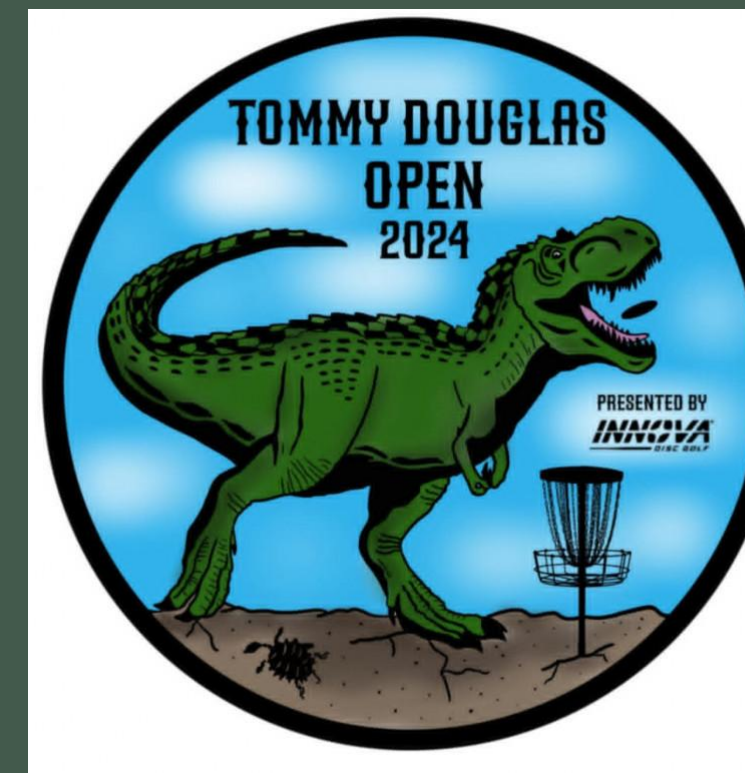
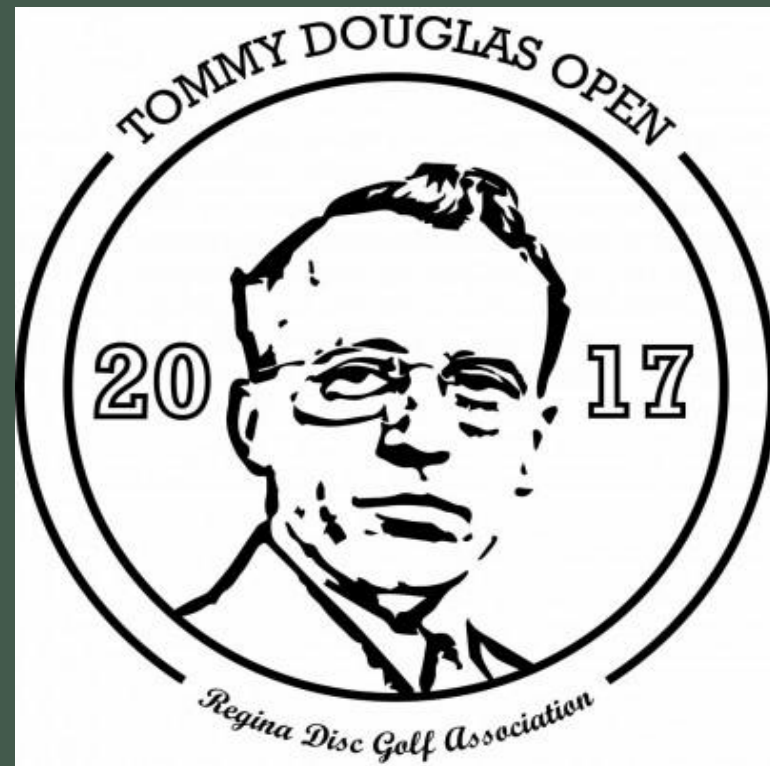
Stop in for some refreshments between rounds at the canteen & beer gardens, located at Tournament Central!

A Huge Thanks to our Gold Sponsors



Thanks to all our Hole Sponsors





History of our Logos

The Tommy Douglas Open, named for Saskatchewan's longest serving Premier, Tommy Douglas, has featured a variety of stamps and logos since its inception in 2017.

While the early years prominently featured the tournament's namesake on its stamps, more recent years have featured symbols recognizable to anyone from Regina or who frequents Douglas Park. This includes Megamunch, the T-Rex who used to inhabit the Royal Sask Museum and Tommy the Turtle, who is a frequent companion to those who lose their discs in the bushes on the holes near Wascana Lake.

Fun fact – One of the tournament's stamps was (in)famously designed entirely in MS Paint. Can you guess which year?

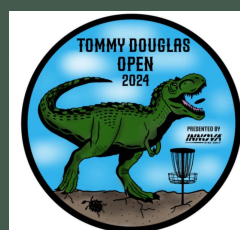
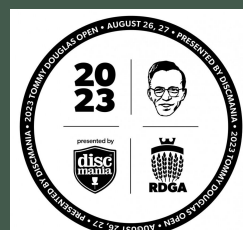
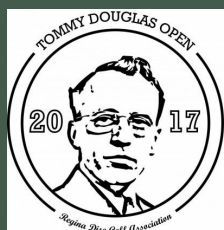
This Year's Logo

We're always excited to work with local artists on a logo design that represents Douglas Park and Regina as a whole. This year we worked with local artist, Harley Sinclair.

Harley Sinclair is a contemporary Indigenous artist based in Regina, Saskatchewan. Harley first caught the disc golf bug about five years ago and quickly became an integral part of the local community. Whether volunteering at tournaments, serving on the board, or just being a familiar face on the fairways, he brought his signature energy and enthusiasm to growing the sport in Regina. Over the years, he's also lent his artistic talents to the game, designing two past stamps for the Sask Open and now, drumroll please, contributing a brand-new stamp for the 2025 Tommy Douglas Open.

This year's design pits a fierce and confident Tommy the Turtle against Regina's own Scotty the T-Rex in an epic face-off. Framed by a swirling motif inspired by the prairie lily, the artwork also features the iconic top of the Saskatchewan Legislative Building, paying tribute to the tournament's namesake, Tommy Douglas, seventh premier of Saskatchewan. Keep your eyes peeled for these stunning discs at TDO 2025!

To support Harley and follow his creative journey, you can visit www.harleyfinearts.ca or find him on Instagram at @harleysinclairart



What kind of prizes are on the line?

There is \$1,000 added to the Pro Purse (more than a PDGA B-tier)

Amateur prizes are being supplemented by \$1,500 worth of gift cards and merchandise (more than what is added to a PDGA B-tier!) thanks to our wonderful sponsors.

There will also be additional prizes for CTPs, Longest Makes, and more.

The Ace Pot will be a minimum \$220. Anyone who hits an ace during the tournament in any of the three rounds will take home the Ace Pot. If more than one person gets an ace in the tournament the Ace Pot will be split evenly between any players who got an ace.

If no aces are hit during the tournament, a CTP competition with all players that paid into the Ace Pot will take place after the third round.

MPO and FPO Winners will be added to the TDO Trophies



FPO Champions

- 2019 – Kadie Hozempa
- 2020 – Kadie Hozempa
- 2021 – Samantha Dustyhorn
- 2022 – Samantha Dustyhorn
- 2023 – Bailey Inglis
- 2024 – Kadie Hozempa

MPO Champions

- 2016 – Jason Wright
- 2017 – Bryan Freese
- 2018 – Bryan Freese
- 2019 – Tyler Boychuck
- 2020 – Zack Renwick
- 2021 – Daniel Fortier
- 2022 – Anthony Neufeld
- 2023 – Anthony Neufeld
- 2024 – Brandon Redekop





All winners & podiums (in large divisions) will receive TDO Trophies

General PDGA and Park Rules

No alcohol, tobacco, or marijuana use is permitted on the course. Even if your card says it's ok.

Do not enter backyards to retrieve discs. If a disc lands in a backyard, advise Cody Christoph or Dan Fortier and we will approach the homeowner after the round to retrieve it.

The Douglas Park disc golf course and ball diamonds are booked for tournament use. However, if other park users are present remain respectful and only throw when it's clear. If there are any issues with other park users advise Cody Christoph or Dan Fortier and they will handle the situation.

If the proper course of action is ever in question, then announce and throw a provisional. Play both lies and discuss what happened with Cody Christoph or Dan Fortier at the end of your round. They will make the final ruling. As per PDGA rules, do not bring photo or video evidence to a TD for a ruling call.

All players on the card must keep score on PDGA Live Scoring as per PDGA rules. Juniors are allowed to have a parent or guardian assist them with scoring during the round. Paper score cards will be available at tournament central if necessary.

Access Code will be TDO2025.

Out of Bounds Lines

Fence along ball diamond on Hole 1.

Out of bounds line is a straight line between posts as shown below with red line.

Out of bounds line IS NOT under chain link portion as shown below.



Out of bounds line is a straight line between posts on fairway side as shown below with red line.



Schedule

Early check-in runs Friday evening from 5PM to 10PM at District Brewing. Player Packs can also be picked up on Saturday at Tournament Central starting at **8AM**.

The All-Players Meeting will be at 7PM @ District Brewing – it is not mandatory.

If any division has a tie for first place after 3 rounds a sudden death playoff will be played on holes **1 & 18**. Report your round scores to the TD, prior to starting the playoff.

Individual Tee Times are in PDGA Live Scoring

Round 1: First Tee-off, Saturday @ 8AM

Round 2: First Tee-off, Saturday @ 1PM

Round 3: First Tee-off, Sunday @ 9AM

Practice: Final course setup (OB's, etc.) will be complete Friday during the day. Most holes will be playable from Wednesday on.

Player packs include a **tournament stamped disc**, a **free drink from District Brewing (19+)** , and a gift card to **Deja Vu Cafe in Moose Jaw**. All items will be set up at tournament central and discs can be selected on a first-come-first-serve basis.



Layouts

Round 1

Red tees

MA3, FA3, FJ15

White Tees

*FPO, MA40, MA2,
FA2*

Blue Tees

MPO, MP40, MA1

Round 2

Red tees

MA3, FA3, FJ15

White Tees

*FPO, MA40, MA2,
FA2*

Blue Tees

MPO, MP40, MA1

Round 3

Red tees

MA3, FA3, FJ15

White Tees

*FPO, MA40, MA2,
FA2*

Blue Tees

MPO, MP40, MA1

Overview



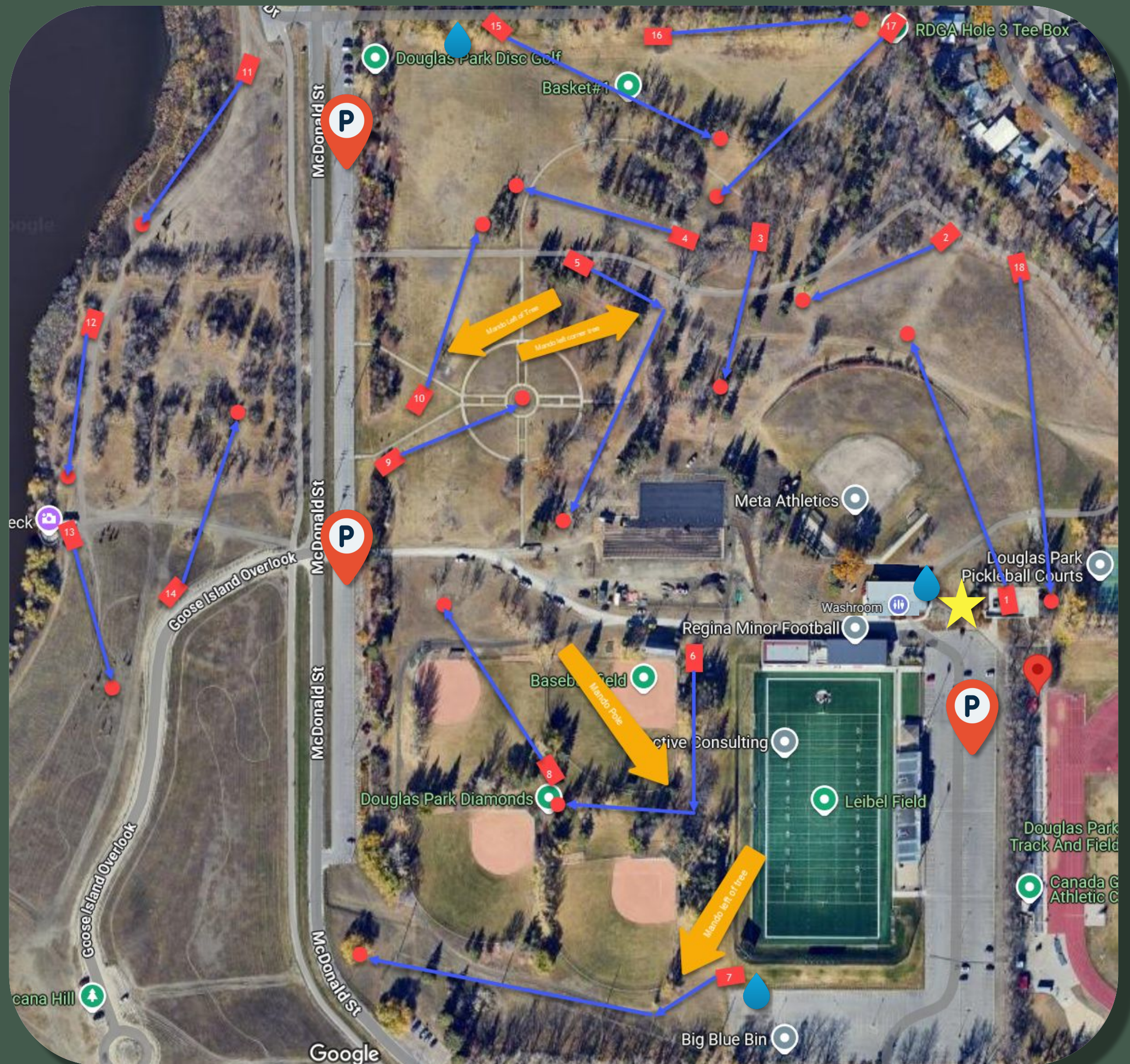
Tournament Central,
Washrooms &
District Brewing
Beer Gardens



Water Stations



Parking



Hole 1

Blue Tee

470 feet
Par 3

White Tee

330 feet
Par 3

Red Tee

190 feet
Par 3



Hole Notes

Ball diamond is **OB**.

Drives that land **OB** go to the **Red Tee** as a drop zone. All other throws play normal point of entry **OB** rules.

OB line on the right side, divides 1 and 18 fairway.

MPO/MP40 CTP

Hole 2

Blue Tee

282 feet
Par 3

White Tee

282 feet
Par 3

Red Tee

282 feet
Par 3



DISC

REPUBLIC

Hole Notes

Island is safe, all other area is played as a **Hazard** (+1 stroke penalty, keep lie). No **OB**.

Red Tee does not have **Hazard** nor any **OB**.

If you land in a **Hazard** area, add one stroke and play your disc from it's lie.

MA2 CTP

Hole 3

Blue Tee
315 feet
Par 3

White Tee
288 feet
Par 3

Red Tee
230 feet
Par 3



Hole Notes

No **OB**, No Mando.
Watch for Pedestrians

All divisions, longest make

Hole 4

Blue Tee

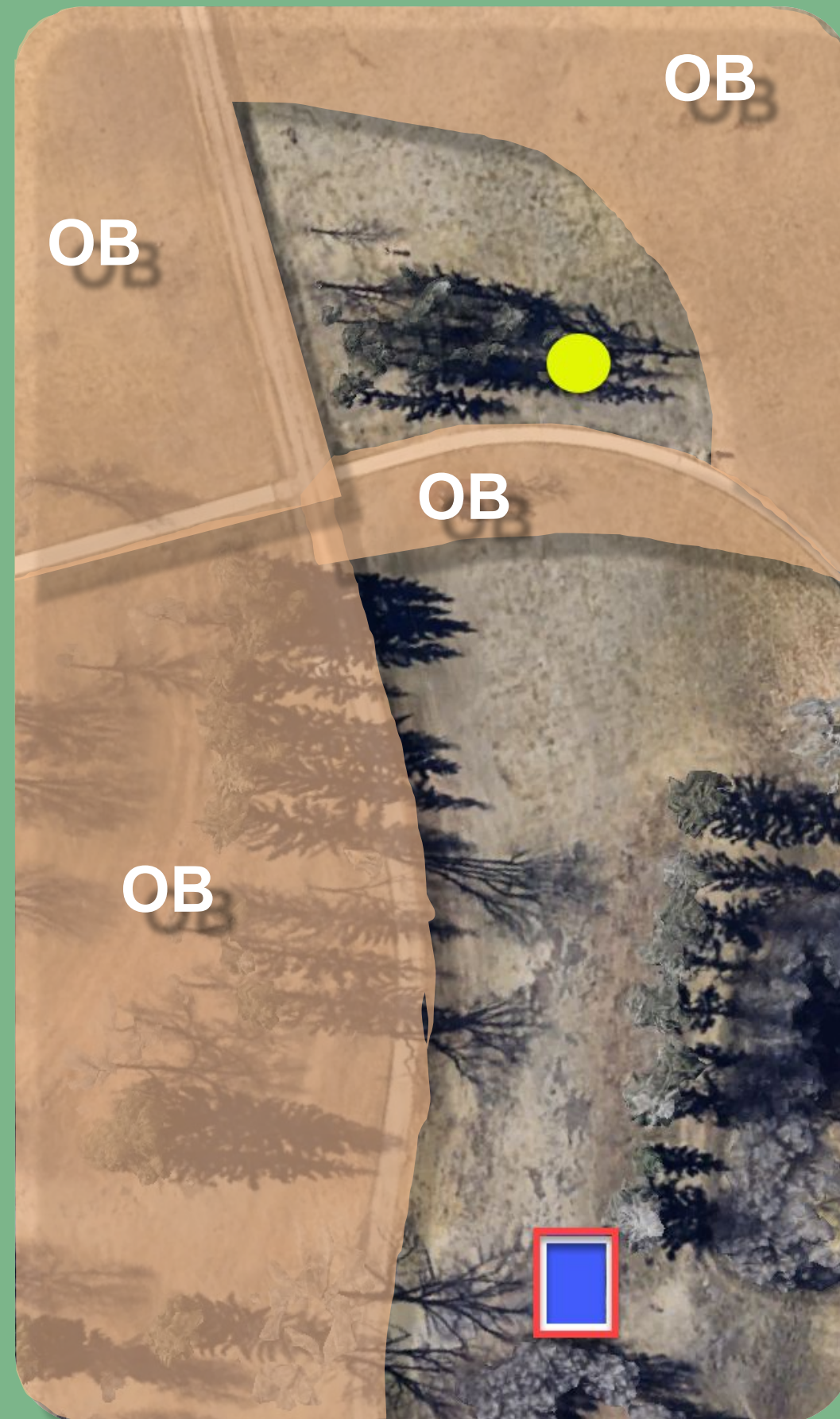
320 feet
Par 3

White Tee

320 feet
Par 3

Red Tee

320 feet
Par 4



Hole Notes

All **OB** plays as regular **OB** – if you land **OB**, then take a one stroke penalty & play from the last point where the disc was in bounds.

MA1 CTP

Hole 5

Blue Tee

586 feet
Par 4

White Tee

586 feet
Par 5

Red Tee

251 feet
Par 3



Hole Notes

Blue & White Tees- Mandatory left of Evergreen (marked).

Pickleball courts are **OB**.

Restricted Space line for the Mando will be marked near the tree (extends infinitely).

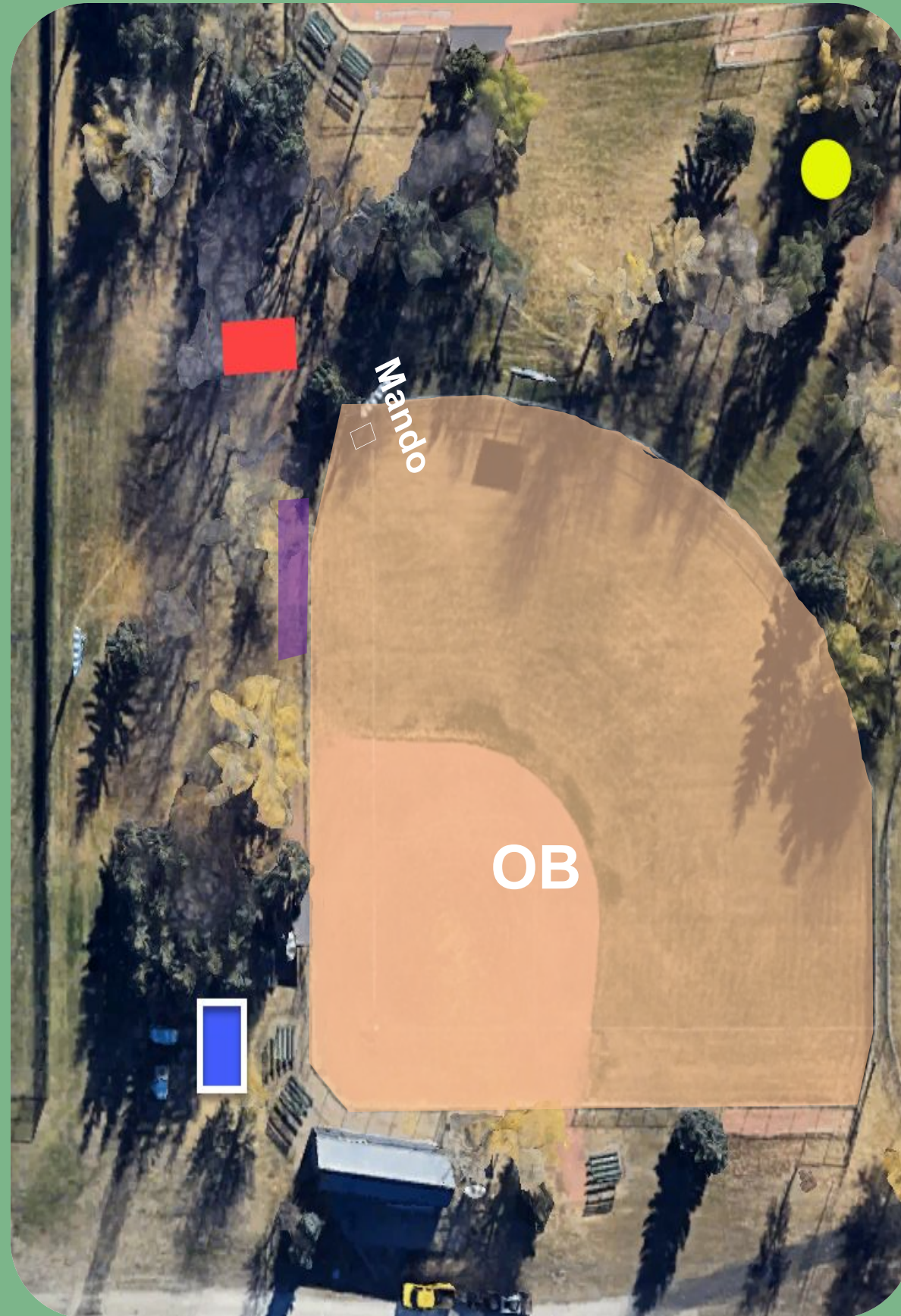
MA3, longest make

Hole 6

Blue Tee
450 feet
Par 4

White Tee
450 feet
Par 4

Red Tee
250 feet
Par 3



Hole Notes

All ball diamonds are **OB** (use fence line).

Blue & White Tees - Mando left of light post (marked & extends). If missed, take penalty, proceed to **Red Tee**.

Discs that land in "**Bullpen**" (marked) are granted casual relief – take nearest possible inbounds lie, +1m from fence.
MA2, longest make

Hole 7

Blue Tee

680 feet
Par 4

White Tee

570 feet
Par 4

Red Tee

355 feet
Par 4



Hole Notes

Ball diamonds (fence-line),
roads and parking areas
(fairway-side edge of bollards)
are **OB**.

Blue Tee - Mando left of tree
near the corner of the ball
diamond (marked)
Female divisions, longest
make

Hole 8

Blue Tee
350 feet
Par 3

White Tee
350 feet
Par 3

Red Tee
170 feet
Par 3



Hole Notes

Ball diamonds (field only) are **OB**.

Blue & White Tee –
If a disc lands **OB** proceed to
Red Tee as a drop zone.
All divisions, CTP

Hole 9

Blue Tee

280 feet
Par 3

White Tee

280 feet
Par 3

Red Tee

135 feet
Par 3



Hole Notes

Marked areas (including paths) are **Hazard**.

If you land in a **Hazard** area, add one stroke and play your disc from it's lie

MA40 CTP

Hole 10

Blue Tee

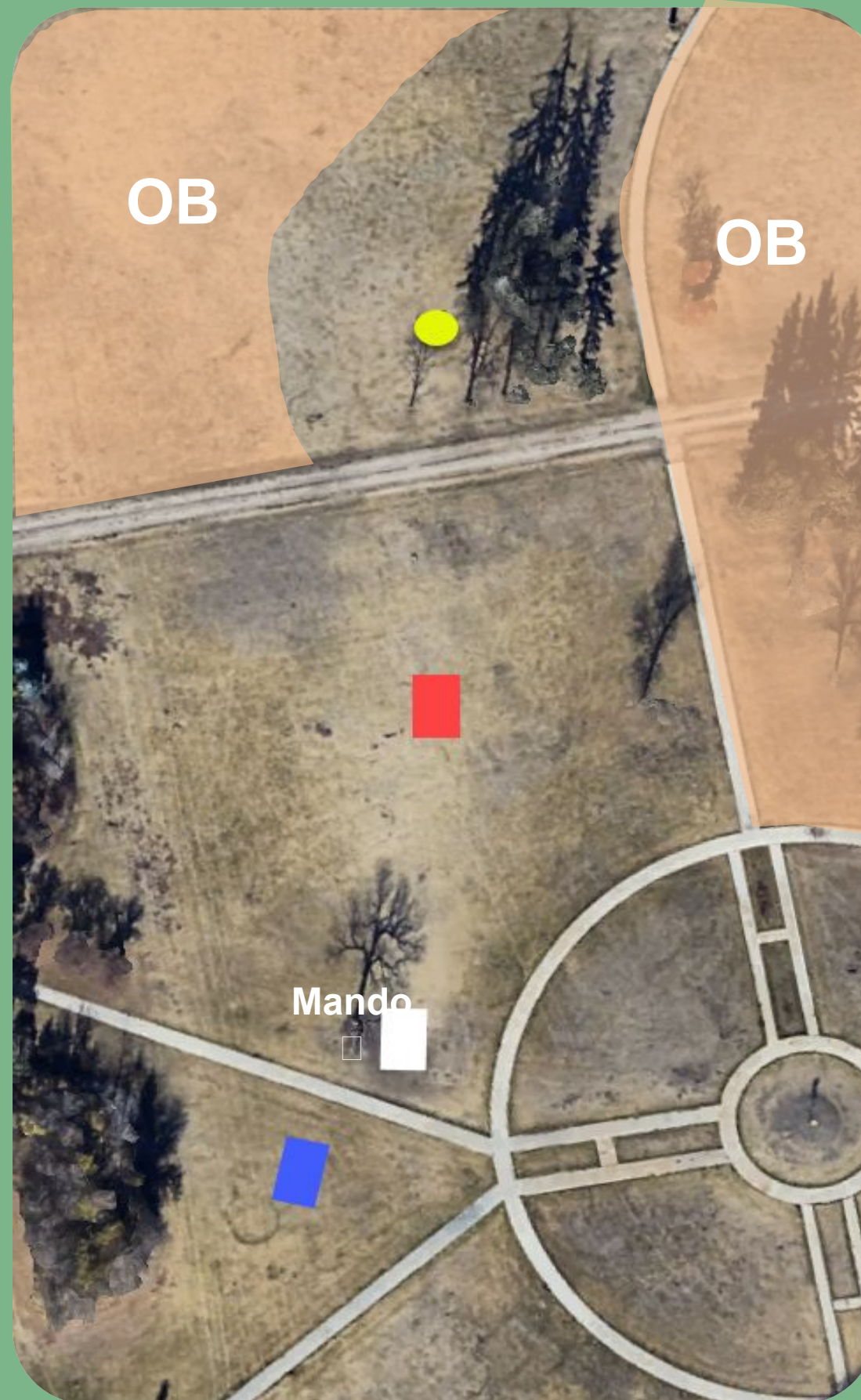
335 feet
Par 3

White Tee

260 feet
Par 3

Red Tee

160 feet
Par 3



TaxTeam
Accounting Solutions

Hole Notes

OB as indicated (note that area south of path is in-bounds, though flags from 4's OB-line are present).

Blue Tee – Mando left of tree (near concrete tee pad)

FA3, Juniors, CTP

Hole 11

Blue Tee

335 feet
Par 3

White Tee

335 feet
Par 3

Red Tee

200 feet
Par 3



DISC

REPUBLIC

Hole Notes

Red Tee

Play to 'A' basket

Blue & White Tee –

Play to 'B' basket

Water is **OB**.

3 minutes to search for lost
discs. If lost, play from
previous lie with +1 penalty.
MA1, longest make

Hole 12

Blue Tee
270 feet
Par 3

White Tee
270 feet
Par 3

Red Tee
180 feet
Par 3



Hole Notes
Water is **OB**.

3 minutes to search for lost discs. If unable to find discs, return to previous lie and play with +1 penalty.

Female divisions, CTP

Hole 13

Blue Tee

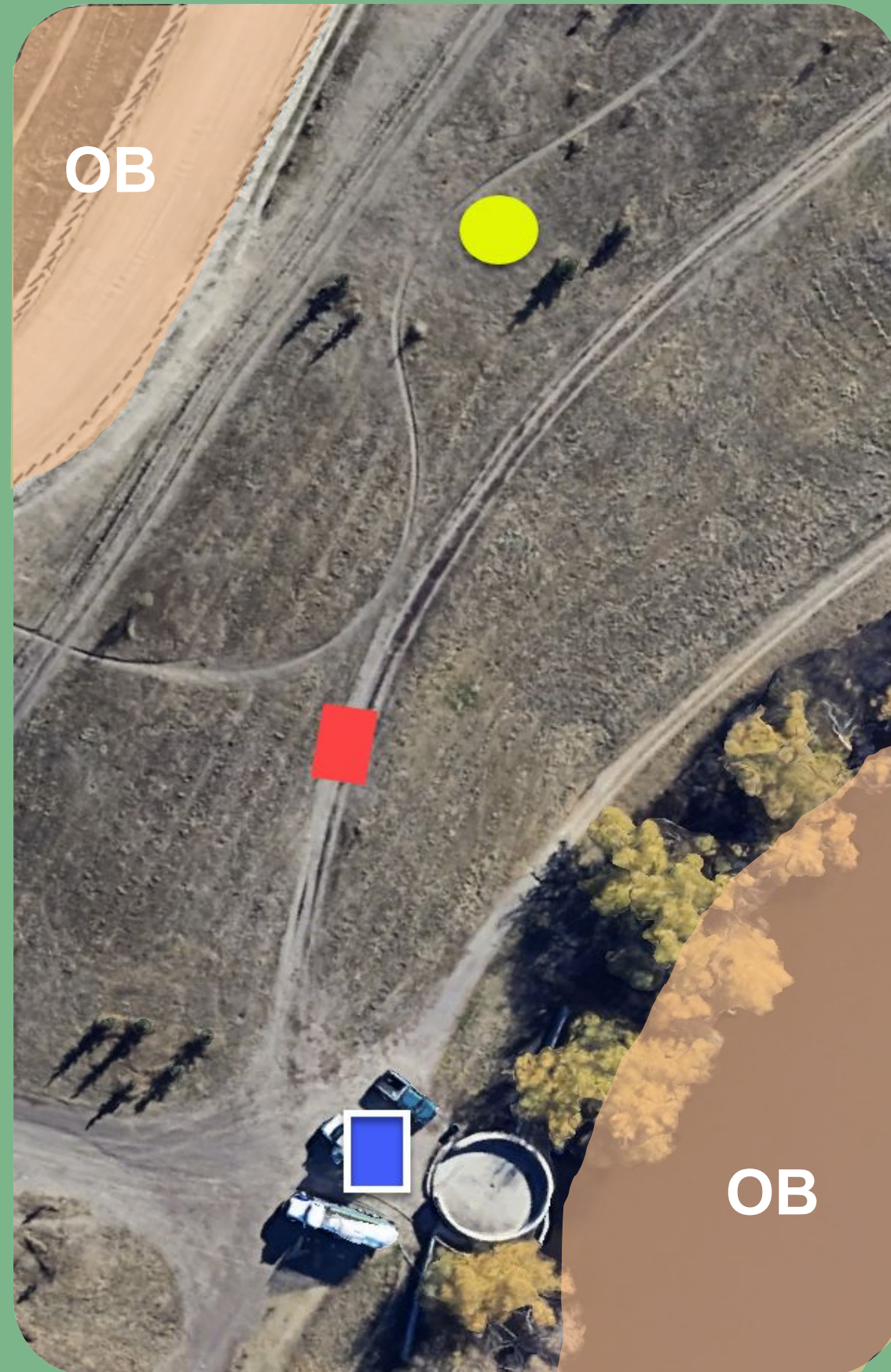
275 feet
Par 3

White Tee

275 feet
Par 3

Red Tee

175 feet
Par 3



Hole Notes

Water & Fairway-side edge of bollards and beyond is **OB**.

3 minutes to search for lost discs. If unable to find discs, return to previous lie and play with +1 penalty.

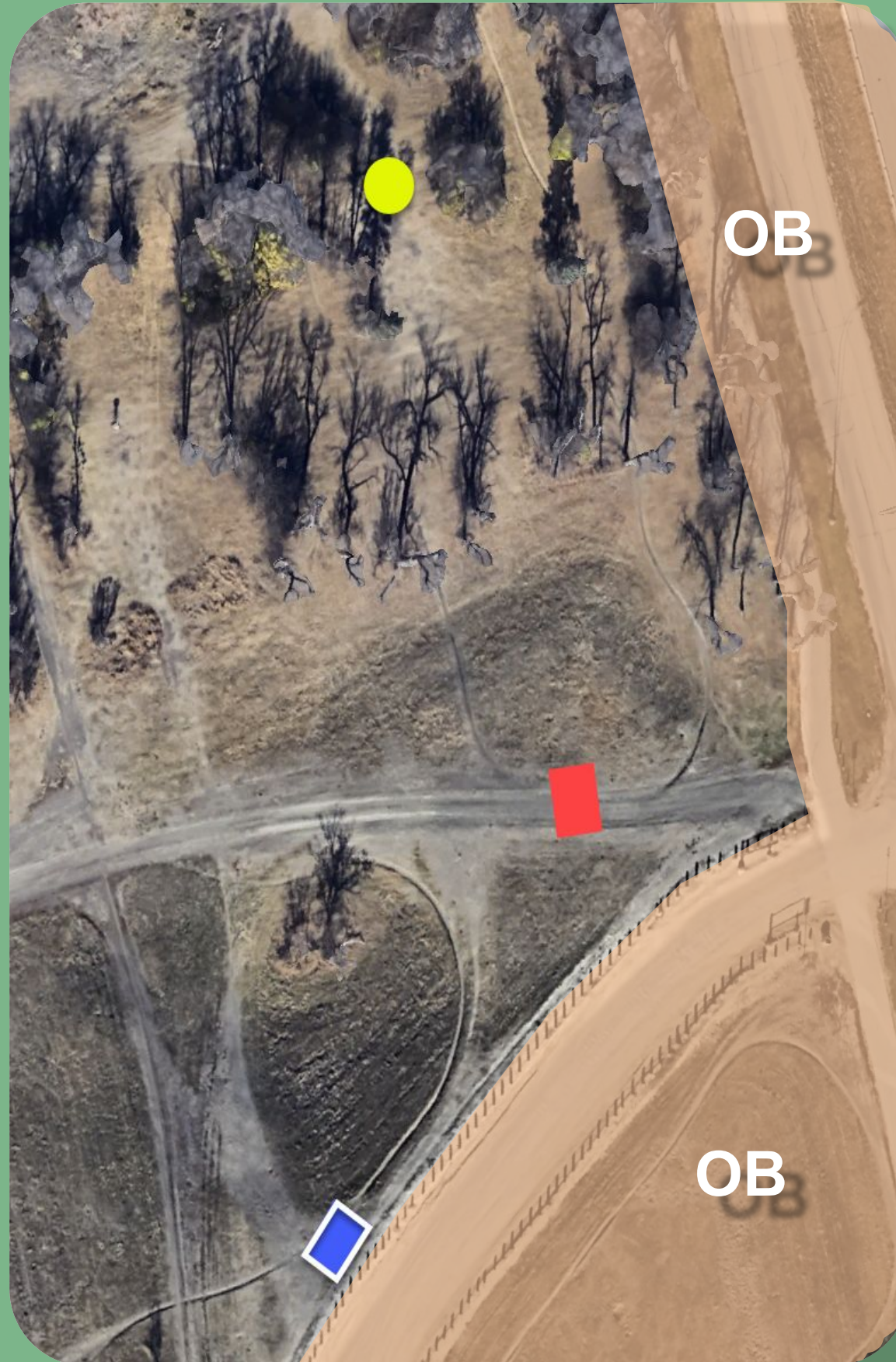
All divisions, CTP

Hole 14

Blue Tee
365 feet
Par 3

White Tee
365 feet
Par 3

Red Tee
197 feet
Par 3



Hole Notes

Fairway-side edge of bollards and beyond is **OB**.

3 minutes to search for lost discs. If unable to find discs, return to previous lie and play with +1 penalty.

MA40 longest make

Hole 15

Blue Tee
405 feet
Par 3

White Tee
310 feet
Par 3

Red Tee
195 feet
Par 3



Hole Notes

Path and beyond (incl. pavement), marked line (beyond long basket), and backyards are **OB**

Red & White Tee -
Play to 'A' basket

Blue Tee -
Play to 'B' basket

MPO/MP40 longest make

Hole 16

Blue Tee

360 feet

Par 4

White Tee

360 feet

Par 4

Red Tee

240 feet

Par 4



Hole Notes

Path and beyond (incl. pavement), marked line (right of fairway) and backyards are **OB.**

All divisions, CTP

Hole 17

Blue Tee
460 feet
Par 4

White Tee
460 feet
Par 4

Red Tee
240 feet
Par 3



Hole Notes

Path and beyond (left), marked line (right) are **OB**. If shot never inbounds, re-tee with penalty.

Red Tee

Play to 'A' basket

Blue & White Tee –

Play to right 'B' basket
All divisions, longest make on their respective basket.

Hole 18

Blue Tee

625 feet

Par 4

White Tee

625 feet

Par 5

Red Tee

350 feet

Par 4



Hole Notes

Tee off on tee pad or beside as marked.

Marked line **OB** (left), marked line (right) are **OB**. Long of basket **OB** as marked. See next slide for **OB** note near basket.

All Divisions, longest make

Hole 18 Notes

See below pictures near hole 18 basket. There is a marked **OB** line in front of the small “cubby” (see red line in photos). The **OB** line stops at the end of the “cubby” wall, so inside the large “cubby” is **IN BOUNDS**.

