

DDC Gauntlet Caddy Book

[Hole #]

[Tee to Basket]

[Par]

[Distance]

Please reference the course map and/or use the [Tee to Basket] section in conjunction with UDisc to make sure you are playing the correct holes. Orange flags are also planted next to tees. They show hole numbers and which basket to play to. Look at these to make sure you're on the correct hole.

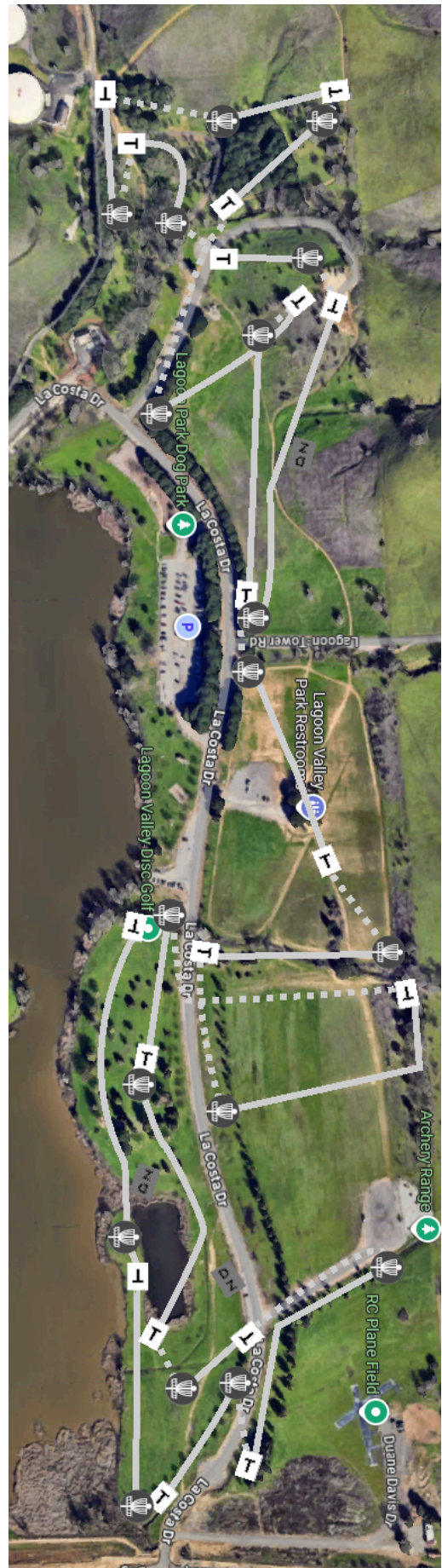
White Flags form OB lines. A straight line between two adjacent flags is the OB line. Use this to determine if a lie is safe or OB.

Some MANDOS and DZs are marked with ORANGE FLAGS. REFERENCE THE CADDY BOOK OR PDGA to know which direction the mando plays and when to proceed to the DZs.

DISREGARD RED TEES IN THIS CADDY BOOK (UNLESS THEY'RE A DZ)

Solid = Hole to basket

Dashed = basket to next tee



COURSE FLOW

<u>After</u>	<u>Path to Next Tee</u>
1	Short walk to tee just past the basket
2	Short walk to tee next to green by table
3	Cross road and backtrack to tee 4
4	Go back down fairway and cross road to tee for island hole
5	Proceed to the tee next to the pond with a table
6	Proceed to tee right next to basket just beyond OB
7	Cross road to tee with table under mini gazebo, walk around it to the right. Proceed all the way up past 9's green to the tee by the back fence next to the table
8	Walk back to the tee with the mini gazebo
9	Head away from the creek towards the bathrooms. There are orange flags on the road/path that mark tee 10
10	Walk down the road past 18's basket until you reach the tee
11	Proceed up the hill on the small path until you reach the tee with concrete blocks around the back
12	Proceed up the road with the parking lot and across the creek just before the grove of pines. This one is hard to explain so consult UDisc GPS
13	The tee is right near the green, easy to spot
14	Proceed all the way down the next fairway and across the concrete path to where the concrete tee is next to the large fence
15	Walk back down the hill to the turf teepad elevated on wood
16	Proceed across the road to the tee at the base of the big hill
17	Proceed across the parking lot to the tee at the edge of the hill

Hole 1

Lagoon 1 to 4A

Par 5

1050'

Notes:

All water plays as OB.

OB across flags on left.

ISLAND GREEN:

All OB in water/reeds
past orange flag on right
proceeds to DZ

DZ = Lagoon 4 Tee

If OB from DZ, play
where last crossed +1
stroke.



Hole 2

Lagoon 5 to 6

Par 4

750'

Notes:

All water plays as OB.

OB across flags on left
and stakes around the green.



Hole 3

Lagoon 7 to 7C

Par 4

532'

Notes:

OB Road and beyond

DOUBLE MANDOs thru two sets of trees down the fairway
(clearly marked with arrows)

If mando missed, play from DZ
in between mando trees.



Hole 4

Lagoon 8 to 8D

Par 5

748'

Notes:

OB paved road and beyond.

OB gravel road and beyond

BEYOND PINK FLAGS IS
SAFE UNTIL GRAVEL
ROAD

Mando LEFT of clearly
marked trees before
turn. One is at the corner. Play lie next to
mando tree if missed.



Hole 5

Lagoon 9 to 9

Par 3

277'

Notes:

HAZARD island.

If outside rope,
play from lie +1 stroke.



Hole 6

Lagoon 10 to 12C

Par 5

830'

Notes:

OB Pond.

If in pond off tee, proceed to DZ (Lagoon 11) +1 stroke.

OB road and beyond

OB beyond flags left of fairway and past basket.



Hole 7

Lagoon 13 to 13B

Par 3

454'

Notes:

OB road and beyond

Ditch/creek is an optional relief area (plays as OB with no penalty stroke). You can choose to play in the ditch or from where you crossed.



Hole 8

Lagoon 16 to 17

Par 5

800'

Notes:

Mando LEFT of tree on right of initial gap

Mando LEFT of pole inside tree near path down to Lagoon 17 tee

OB over barbed wire fence left of tee

OB beyond flags on sides of fairway and beyond basket



Hole 9

Lagoon 14 to 15C

Par 4

650'

Notes:

OB creek (marked with flags)

Mando left of tree marked
with orange flag

Elevated Basket



Hole 10

Valley Alt 1 to 1A
Par 4
620'

Notes:

Tee marked with
orange flags

TRIPLE MANDO:
b/w initial trees and
under canopy (if you
hit the canopy and
drop it's safe, just
don't throw over the
trees). DZ marked
between mando trees

OB parking lot and
bathroom
OB road and beyond
OB creek and beyond



Hole 11

Valley 1 to 2A

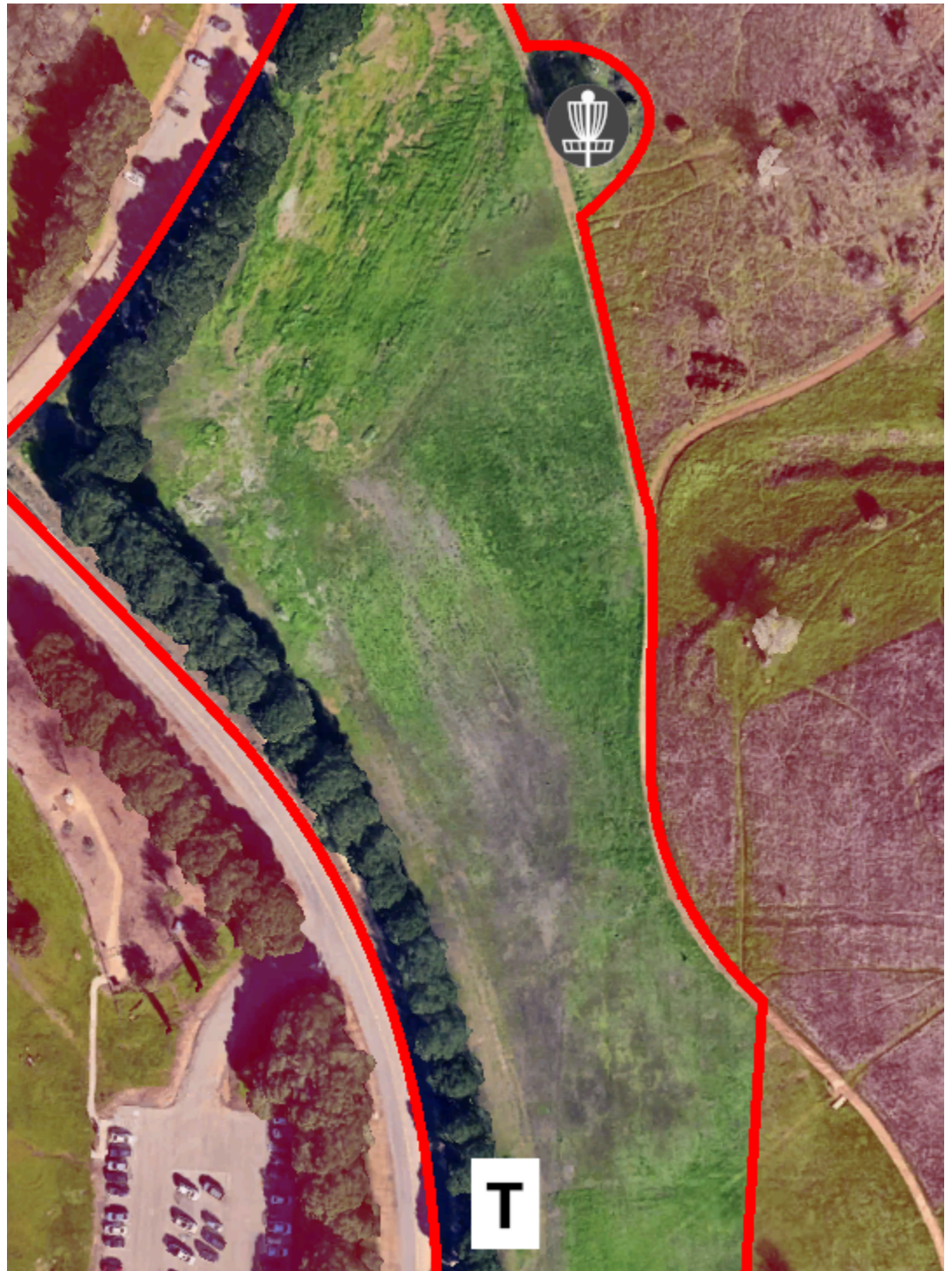
Par 4

700'

Notes:

OB road and
beyond

OB path and
beyond.
Bubbles out
near basket.



Hole 12

Valley 3 to 2C

Par 4

615'

Notes:

*Wait until basket 10 is
clear to tee off*

Mando LEFT of initial tree

OB road and beyond



Hole 13

Valley 7 to 7D

Par 4

452'

Notes:

n/a



Hole 14

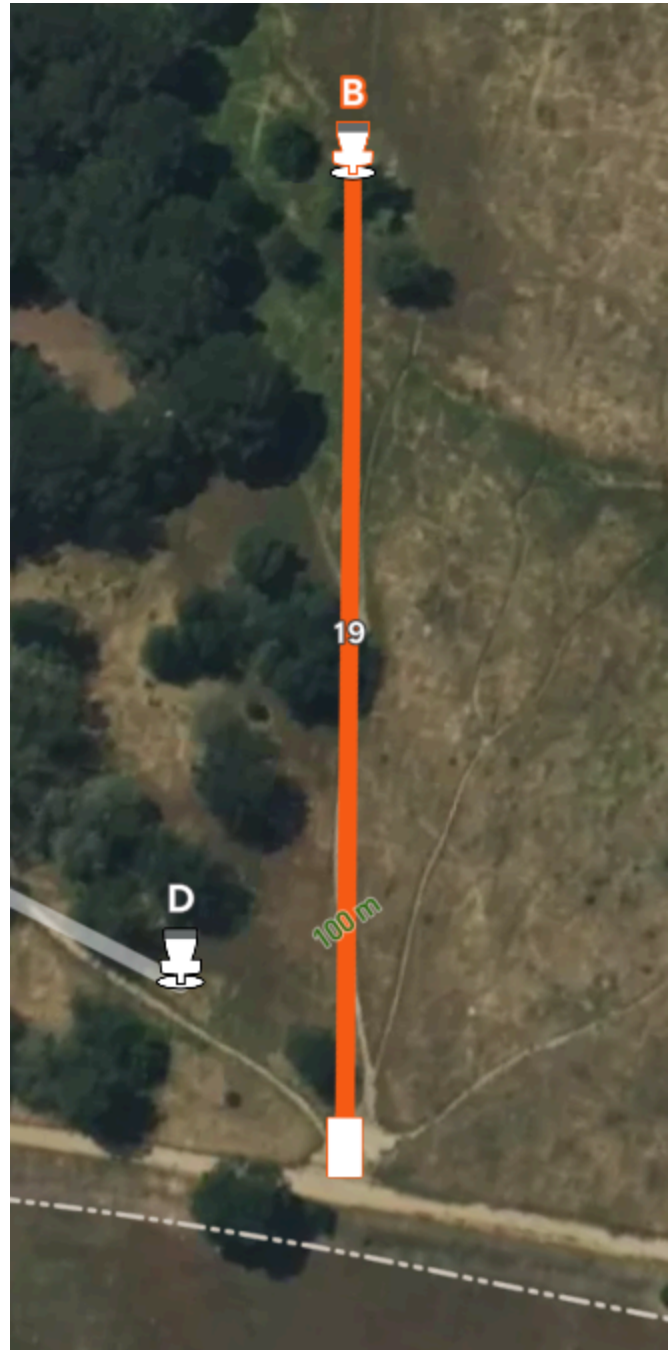
Valley 8 to 8B

Par 3

310'

Notes:

OB road and beyond



Hole 15

Valley 12 to 12B

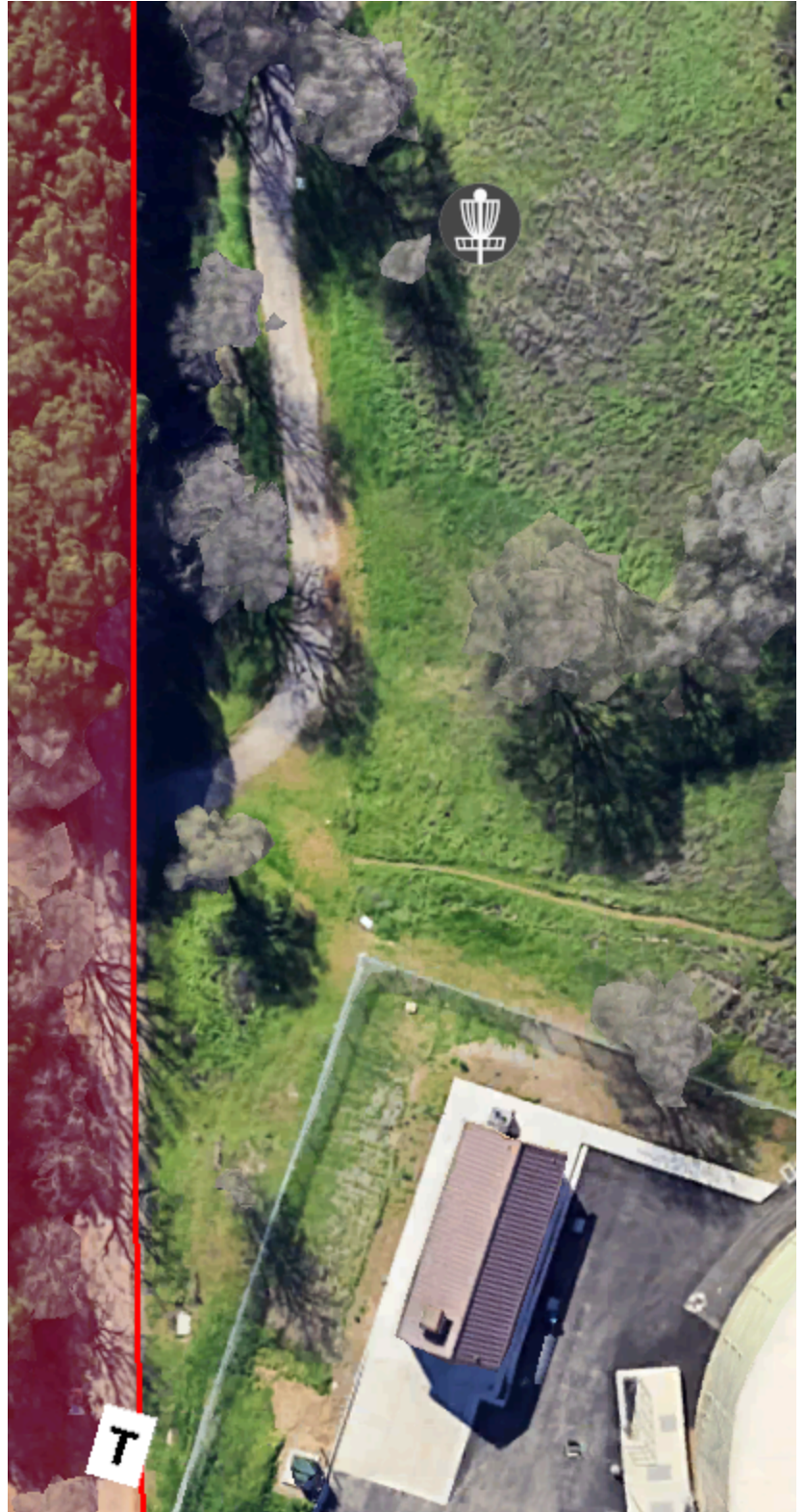
Par 3

328'

Notes:

OB paved path and
beyond

OB across fence



Hole 16

Valley 14 to 15B

Par 4

~400'

Notes:

OB gravel
road and
beyond

PLEASE SPOT



Hole 17

Valley 16 to 16B

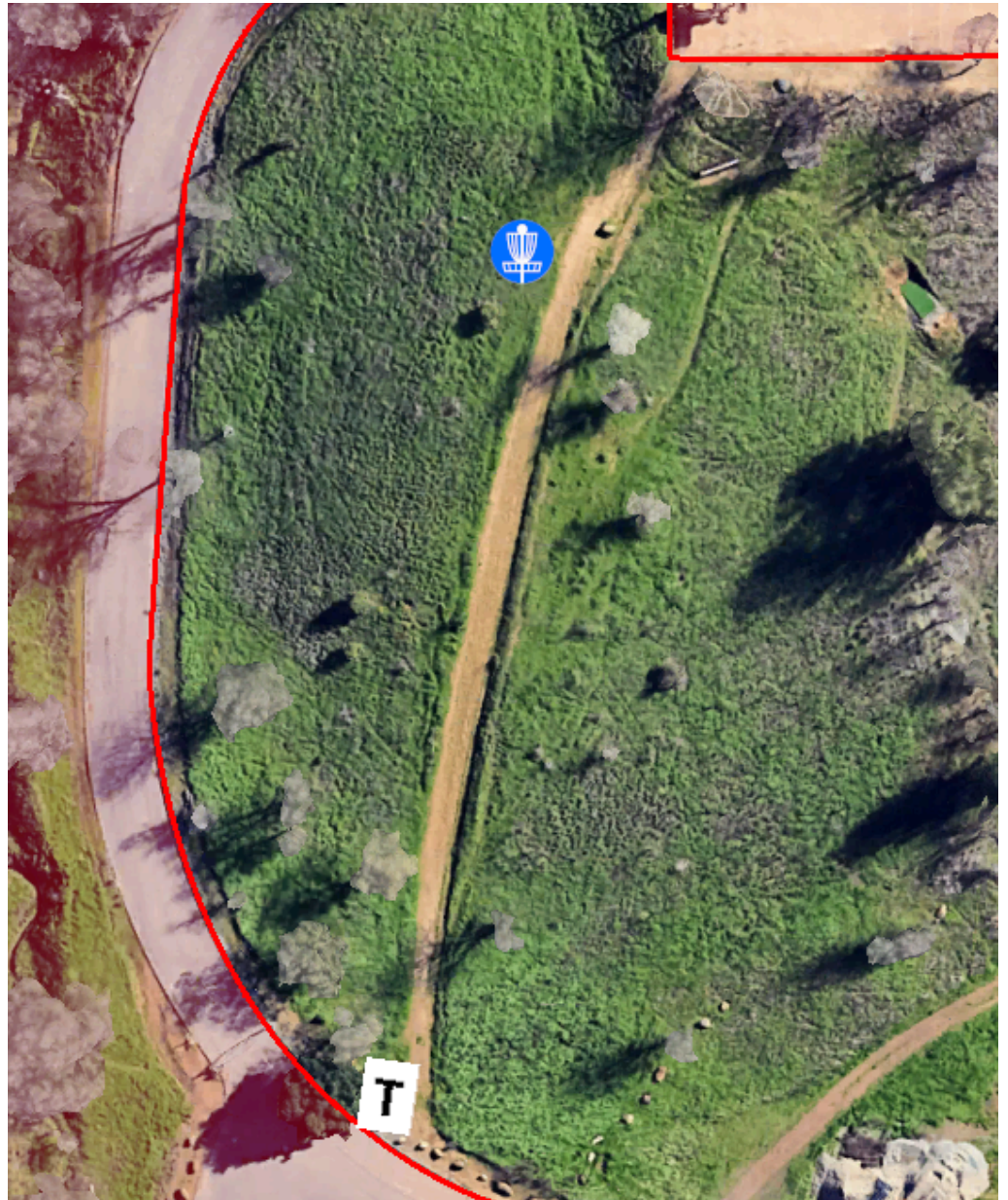
Par 3

274'

Notes:

OB road and
beyond

OB paved
parking lot



Hole 18

Valley 17 to 18B

Par 4

~925'

Notes:

If OB off tee, proceed to
DZ (marked with orange
flags) +1 stroke

OB white flags and beyond

OB road and beyond

