

Desert Flyers Open VII



Proudly Presented by



2025 CADDY BOOK

Stripe Show Golf Club, Mesa, AZ

Proudly Sponsored by



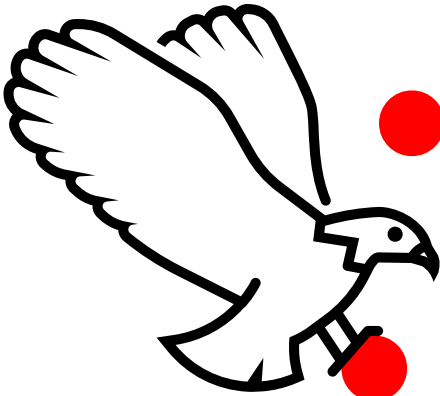
FINISTER
#46596



Thank You Early Bird Registrants:

- *Jaylen Mosley*

- *Brody Schiefen*



- *Curtis Knott*

- *Brandon Mauk*

- *Kenneth Persons*

- *Sammy Gallegos*

- *Jerid Ludwig*

VENDOR VILLAGE

We are proud to be partnered with this year's Vendors! You can locate them near Tournament Central:



GRÖN EDIBLES

THC/CBD Products

Free Samples, Mini-Games and
More! Play their Mini-Game near
Hole 18 after the round to win
Prizes!

Plastic Pilot USA

"Competition Driven Innovation"
For all your Collectible
Disc Golf Needs!





Disc Golf HQ

"The Home of Ricky Wysocki"
Shop now at HQdiscgolf.com !

HQDiscgolf.com



Eggroll Masters

Their name says it all.
Find their food truck in the
Parking Lot near Hole 6.
See Next Page for Pricing and Menu

TODAY'S EGG ROLL FLAVORS (MIX AND MATCH)

1. 911 SPICY
2. BUFFALO CHICKEN MAC & CHEESE
3. CRAB RANGOON
4. GREEN CHILI CHICKEN ENCHILADA
5. TRADITIONAL
6. VEGGIE

COMBOS: (SEE EGG ROLL FLAVORS ABOVE)

- A. - 2 EGG ROLLS, SIDE, & DRINK - \$13
- B. - 3 EGG ROLLS, SIDE, & DRINK - \$17
- C. - 4 EGG ROLLS, SIDE, & DRINK - \$20
- D. - KIDS MEAL - NUGGIES, FRIES & DRINK - \$13

A LA CART EGG ROLLS:

- | | |
|------------|------------|
| 1 FOR \$4 | 2 FOR \$8 |
| 3 FOR \$12 | 4 FOR \$16 |
| 5 FOR \$19 | 6 FOR \$22 |

BEVERAGES:

- | |
|-------------|
| SODA - \$2 |
| TEA - \$2 |
| WATER - \$1 |

SIDES: (ADD SEASONING FOR NO EXTRA)

- FRENCH FRIES - \$4
- WONTON CHIPS (SEASONED) \$4 (SEE BELOW)
- JALAPENO POPPERS - \$6
- FRIED ZUCCHINI - \$6
- NUGGIES - \$6

SEASONED WONTON CHIPS: \$6

CAJUN, CINNAMON & SUGAR, HOUSE SALT, GARLIC & HERB, BUTTERY STEAKHOUSE,

(MORE SEASONING ALSO AVAILABLE)

MENU UPDATED
FOR 7/12/25

General Rules

- Any Concrete is OB
- 2 METER RULES IS NOT IN EFFECT
- Any Painted Line and Beyond is OB
- Water's Edge Defines OB



Hole-Specific Rules

- Hole 1: **ISLAND HOLE!!!** Any DRIVE that lands outside the island, proceed to marked DZ with Penalty Stroke. Any subsequent throws that do not land on the Island, proceed from last in-bounds with Penalty Stroke
- Hole 2: Painted Lines and Beyond is OB. Play from last in-bounds with Penalty Stroke.
- Hole 3: Painted Lines and Beyond is OB. Fence and Beyond is OB. Play from last in-bounds with Penalty Stroke.
- Hole 4: **MANDO LEFT** of marked tree. If missed, proceed to marked DZ. Painted Lines and Beyond is OB. Water Line defines OB. Play from last in-bounds with Penalty Stroke.
- Hole 5: Painted Lines and Beyond is OB. Wall and Beyond is OB. Play from last in-bounds with Penalty Stroke.
- Hole 6: Painted Lines and Beyond is OB. Sidewalk and Beyond is OB. Asphalt and Beyond is OB. Play from last in-bounds with Penalty Stroke.

Hole-Specific Rules continued

- Hole 7: **DOUBLE MANDO** between Marked Trees. If missed, proceed to marked DZ with Penalty Stroke. Painted Lines and Beyond is OB. Play from last in-bounds with Penalty Stroke.
- Hole 8: Painted Lines and Beyond is OB. Play from last in-bounds with Penalty Stroke.
- Hole 9: Painted Lines and Beyond is OB. Wall defines OB where paint stops. Play from last in-bounds with Penalty Stroke.
- Hole 10: Painted Lines and Beyond is OB. Fence Line and Beyond is OB. Play from last in-bounds with Penalty Stroke.
- Hole 11: **MANDO LEFT** of Marked Tree. If missed, proceed to Marked DZ with Penalty Stroke. Painted Lines, Fence and Beyond is OB. Wall defines OB where paint stops. Water Edge defines OB. Play from last in-bounds with Penalty Stroke.
- Hole 12: Painted Lines, Fence and Beyond is OB. Concrete is OB. Wall Defines OB where paint stops. Water Edge defines OB. Play from last in-bounds with Penalty Stroke.
- Hole 13: **DOUBLE MANDO** between Marked Trees. If missed, proceed to Marked DZ with Penalty Stroke. Painted Lines and Beyond is OB. Wall Defines OB where paint stops. Water Edge defines OB. Play from last in-bounds with Penalty Stroke

Hole-Specific Rules continued

- Hole 14: MANDO LEFT of Marked Tree. If missed, proceed to Marked DZ with Penalty Stroke. Painted Lines and Beyond is OB. Waters Edge defines OB. Play from last in-bounds with Penalty Stroke
- Hole 15: Painted Lines and Beyond is OB. Wall and Beyond is OB. Play from last in-bounds with Penalty Stroke
- Hole 16: MANDO LEFT of marked tree. If missed, proceed to marked DZ1 with Penalty Stroke. DOUBLE MANDO through marked trees. If missed, Proceed to Marked DZ2 with penalty stroke. Painted Lines and Beyond is OB. Waters Edge defines OB. Play from last in-bounds with Penalty Stroke
- Hole 17: MANDO LEFT of marked tree. If missed, Re-Tee with Penalty Stroke. Painted Lines and Beyond is OB. Wall defines OB where paint stops. Waters Edge defines OB. Play from last in-bounds with Penalty Stroke.
- Hole 18: Painted Lines and Beyond is OB. Play from last in-bounds with Penalty Stroke.



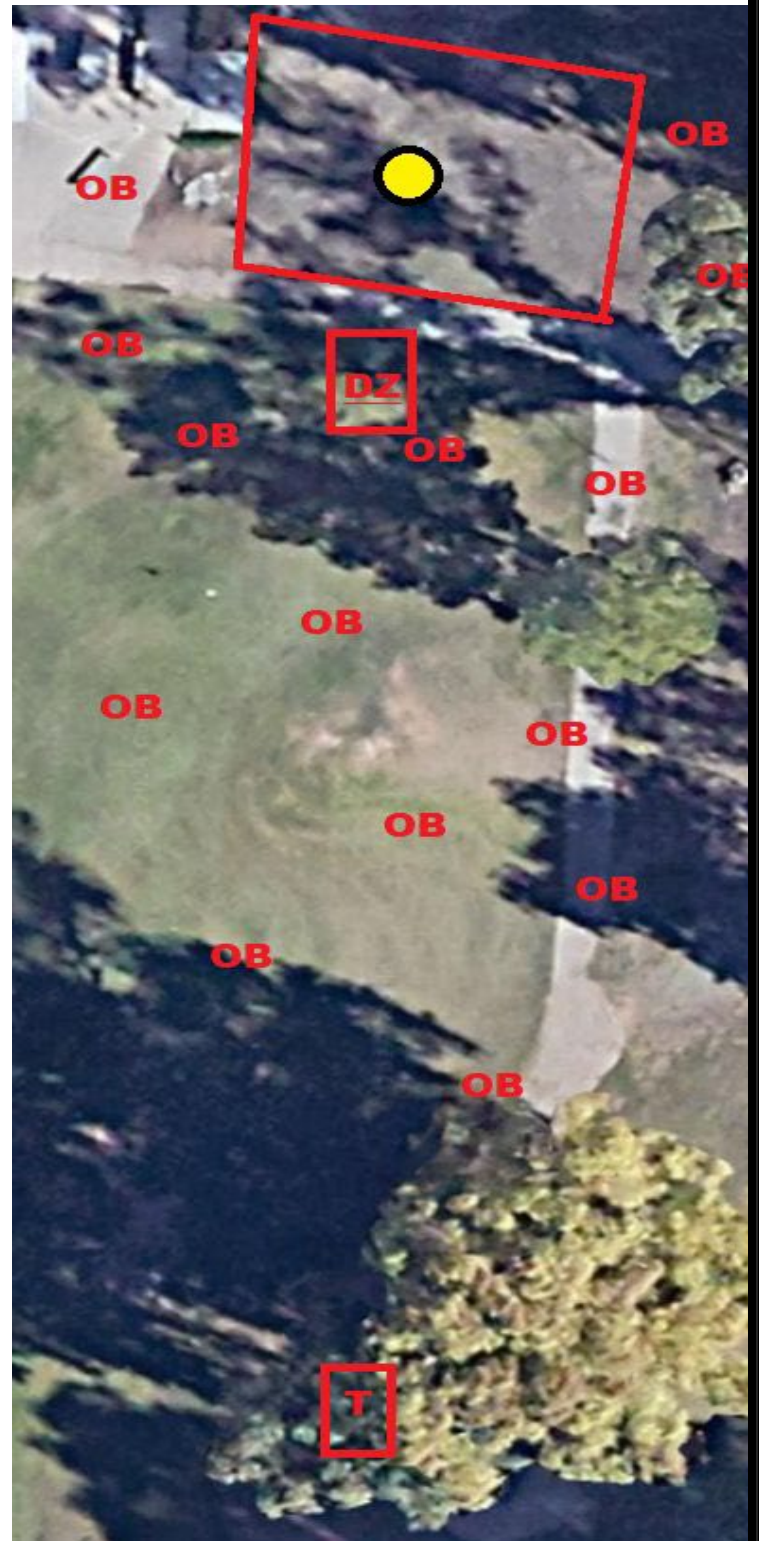
HOLE 1 – Par 3 – 237 feet

ISLAND HOLE!!! Any DRIVE that lands outside the island, proceed to marked DZ with Penalty Stroke. Any subsequent throws that do not land on the Island, proceed from last in-bounds with Penalty Stroke

Hole Sponsor:

**CHRIS
“FISTER”
COBB**

FWINTER
#46596



HOLE 2 – Par 3 – 395 Feet

Painted Lines and Beyond is OB. Play from last in-bounds
with Penalty Stroke.

Hole Sponsor:

CURTIS KNOTT



HOLE 3 – Par 3 - 385 Feet

Painted Lines and Beyond is OB. Fence and Beyond is OB.

Play from last in-bounds with Penalty Stroke.

Hole Sponsor:

JEREMY FROST



HOLE 4 – Par 3 – 398 Feet

MANDO LEFT of marked tree. If Missed, Proceed to marked DZ with Penalty Stroke. Painted Lines and Beyond is OB. Water Line defines OB. Play from last in-bounds with Penalty Stroke.

Hole Sponsor:

JAMES RUSH



HOLE 5 – Par 3 – 495 Feet

Painted Lines and Beyond is OB. Wall and Beyond is OB. Play from last in-bounds with Penalty Stroke.

Hole Sponsor:

CHRIS

“FISTER”

COBB

FINISTER
#46596

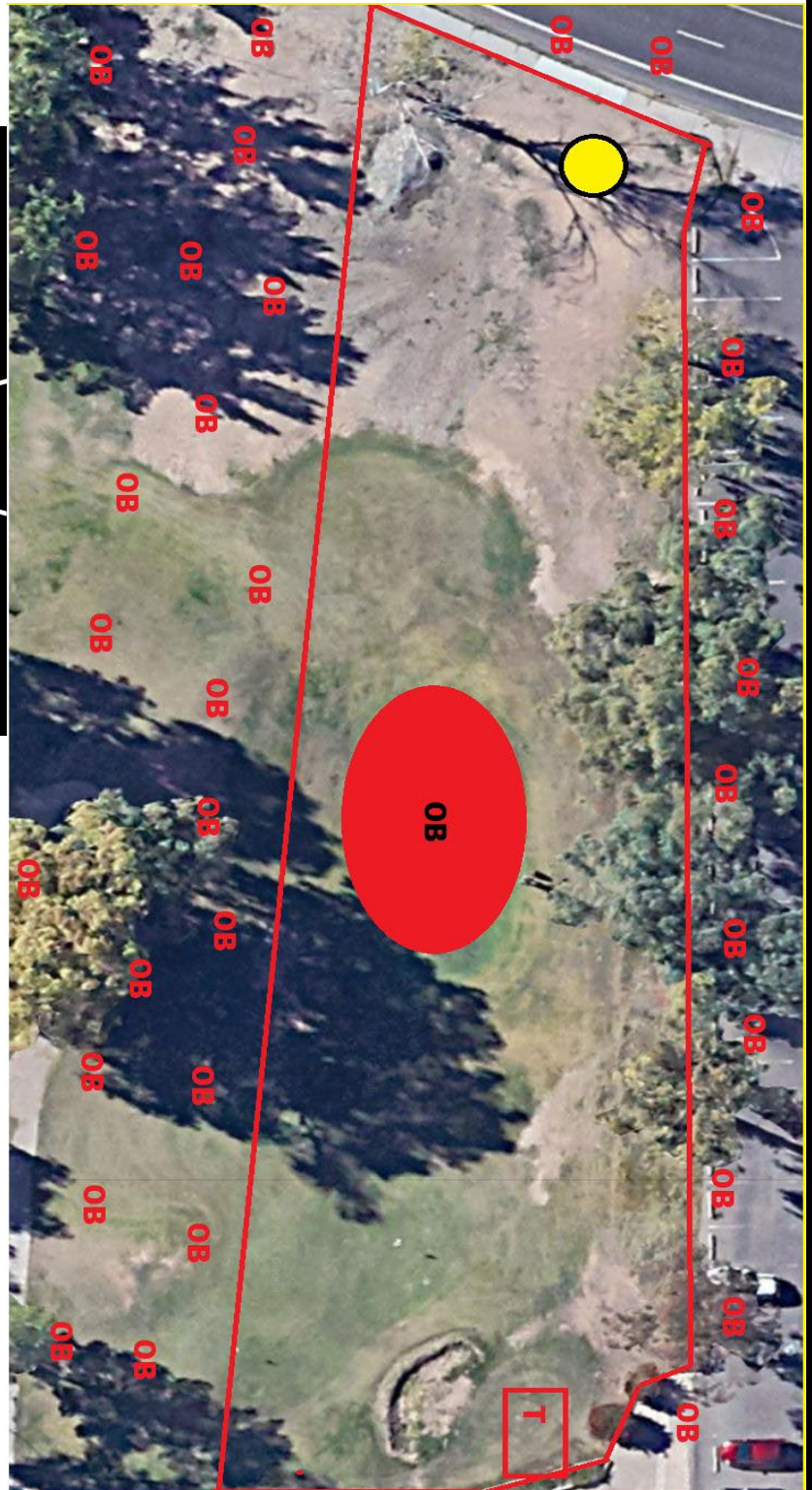
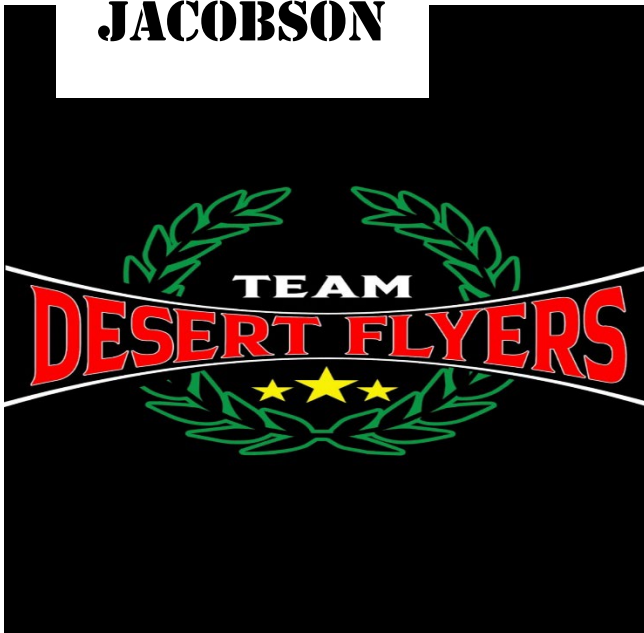


HOLE 6 – Par 3 – 312 Feet

Painted Lines and Beyond is OB. Sidewalk and Beyond is OB.
Asphalt and Beyond is OB. Play from last in-bounds with Penalty
Stroke.

Hole Sponsor:

**MARCUS
JACOBSON**



HOLE 7 – Par 3 – 295 Feet

DOUBLE MANDO between Marked Trees. If missed, proceed to marked DZ with Penalty Stroke. Painted Lines and Beyond is OB.

Play from last in-bounds with Penalty Stroke.

Hole Sponsor:

**CHANCE
STEPHENS**



HOLE 8 – Par 3 – 342 Feet

Painted Lines and Beyond is OB. Play from last in-bounds with

Hole Sponsor:

Penalty Stroke.

CURTIS KNOTT



HOLE 9 – Par 4 – 549 Feet

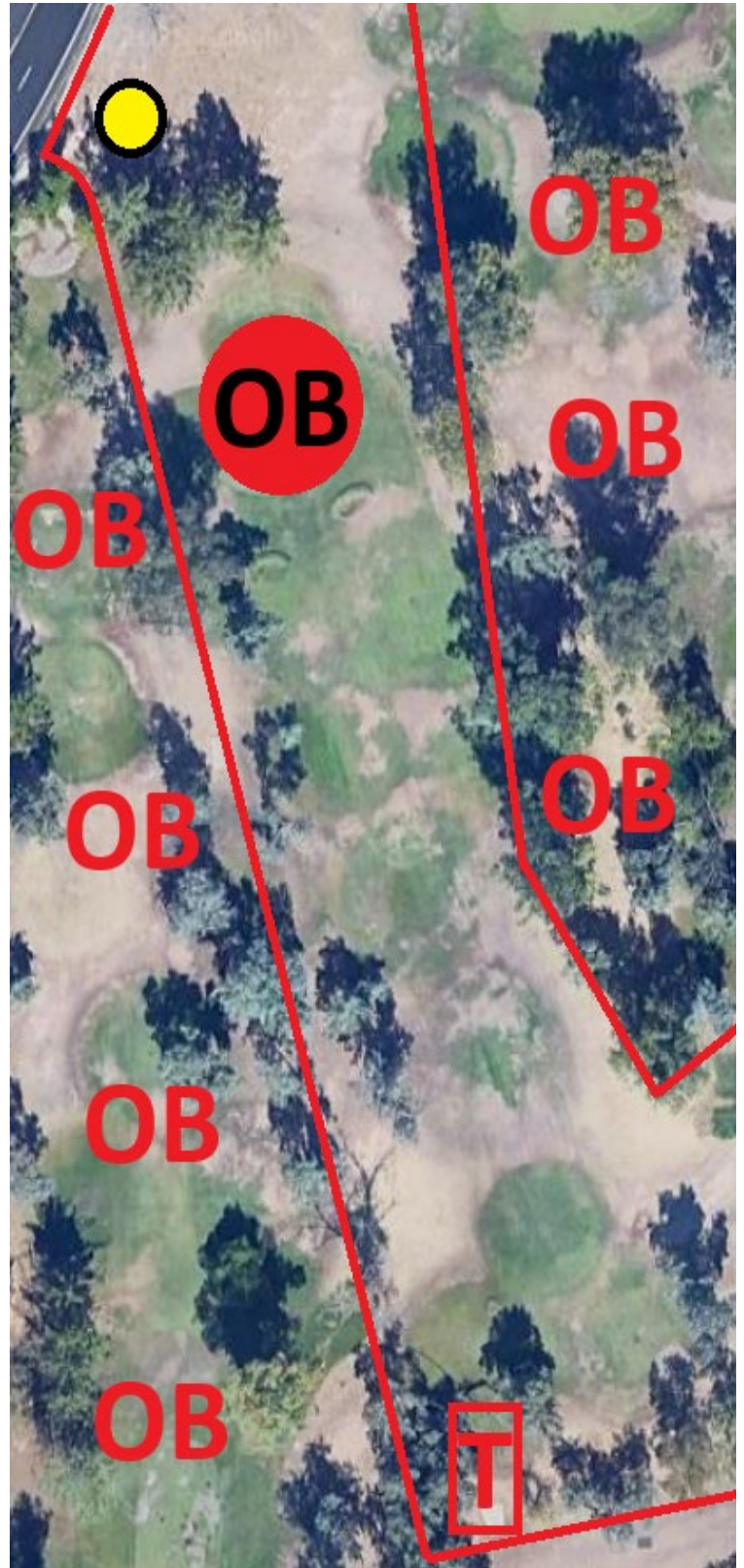
Painted Lines and Beyond is OB. Wall defines OB where paint stops. Play from last in-bounds with Penalty Stroke.

Hole Sponsor:

**SEAN ANTHONY
TERRILLION**

2 Corinthians 3:17

“For the Lord is the Spirit, and wherever the Spirit of the Lord is, there is Freedom.”



HOLE 10 – Par 4 – 572 feet

Painted Lines and Beyond is OB. Fence Line and Beyond is OB.

Play from last in-bounds with Penalty Stroke.

Hole Sponsor:

CHANCE

STEPHENS



HOLE 11 – Par 5 – 888 Feet

MANDO LEFT of Marked Tree. If missed, proceed to Marked DZ with Stroke Penalty. Painted Lines, Fence, and Beyond is OB. Wall defines OB where paint stops. Water Edge defines OB. Play from last in-bounds with Penalty Stroke.

Hole Sponsor:

HQDISCGOLF.COM

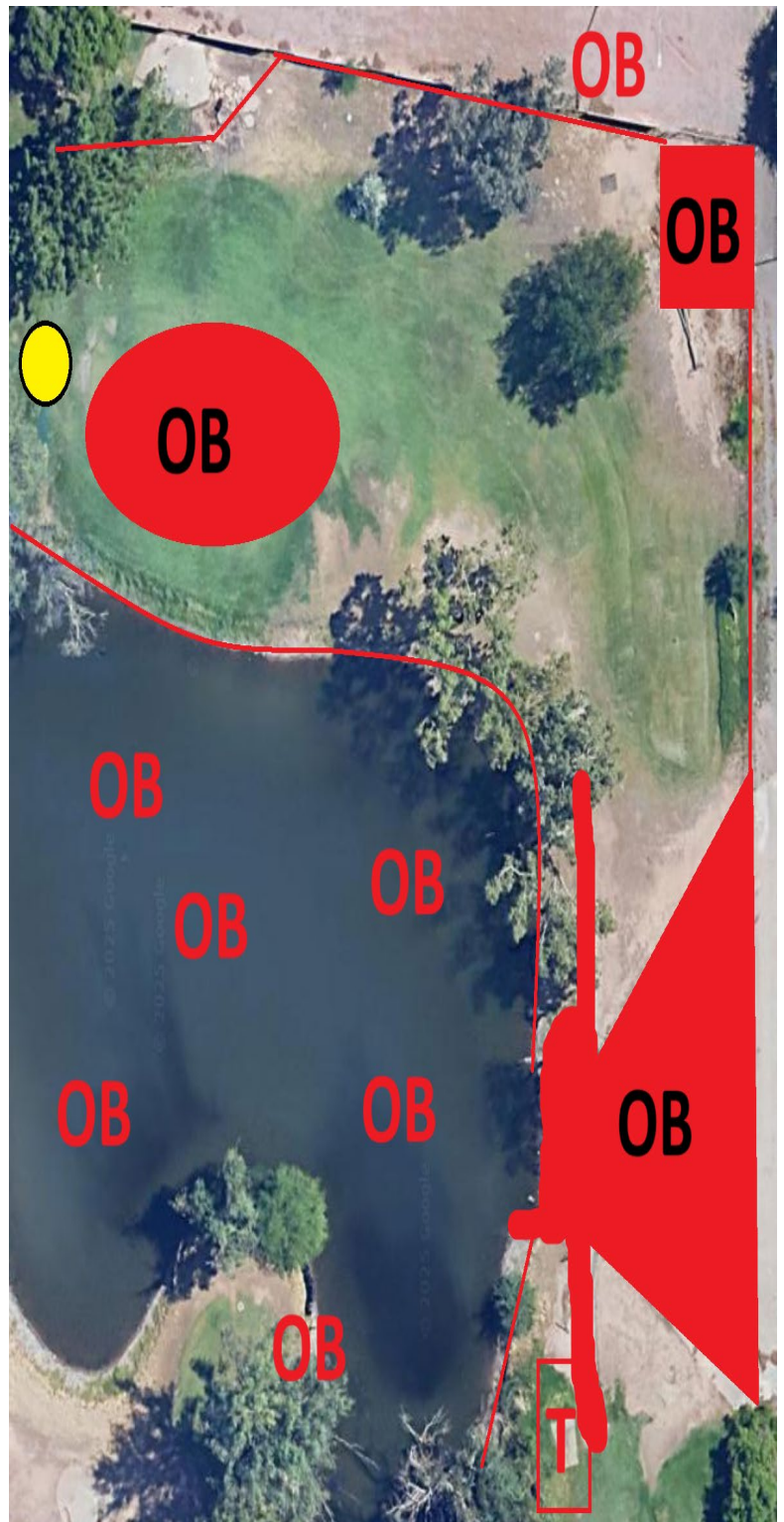


HOLE 12 – Par 3 – 340 Feet

Painted Lines, Fence and Beyond is OB. Concrete is OB. Wall Defines OB where paint stops. Water Edge defines OB. Play from last in-bounds with Penalty Stroke.

Hole Sponsor:

**CHANCE
STEPHENS**



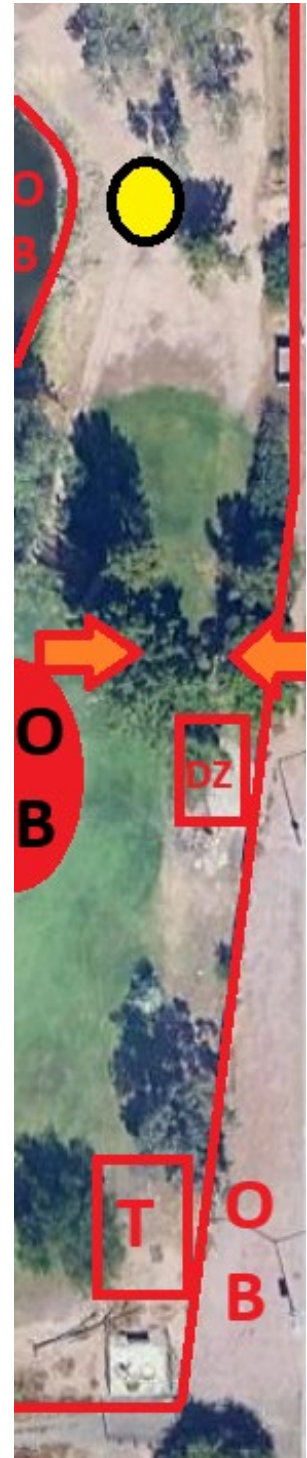
HOLE 13 – Par 3 – 333 Feet

DOUBLE MANDO between Marked Trees. If missed, proceed to Marked DZ with Penalty Stroke. Painted Lines and Beyond is OB. Wall Defines OB where paint stops. Water's Edge defines OB. Play from last in-bounds with Penalty Stroke

Hole Sponsor:

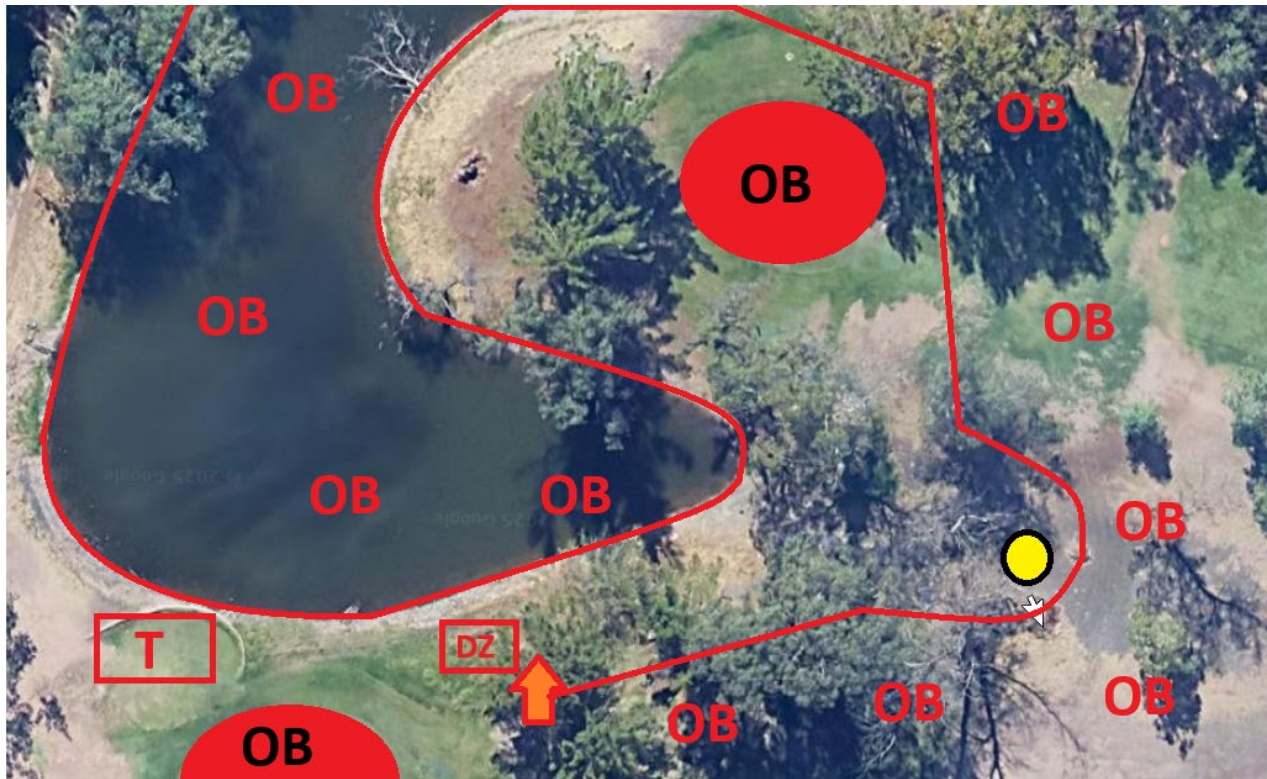
CHRIS “FISTER” COBB

FISTER
#46596



HOLE 14 – Par 3 - 267 Feet

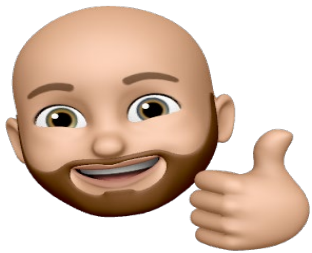
MANDO LEFT of Marked Tree. If Missed, proceed to Marked DZ with Penalty Stroke. Painted Lines and Beyond is OB. Water's Edge defines OB. Play from last in-bounds with Penalty Stroke



Hole Sponsor:

PHOENIX FLIGHT

LEE SEMKE

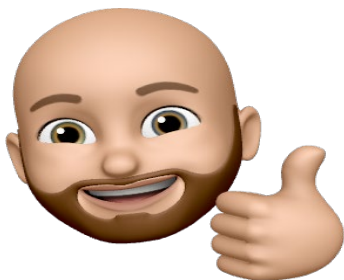


HOLE 15 – Par 4 – 510 Feet

Painted Lines and Beyond is OB. Wall and Beyond is OB. Play from last in-bounds with Penalty Stroke

Hole Sponsor:

CHANCE STEPHENS

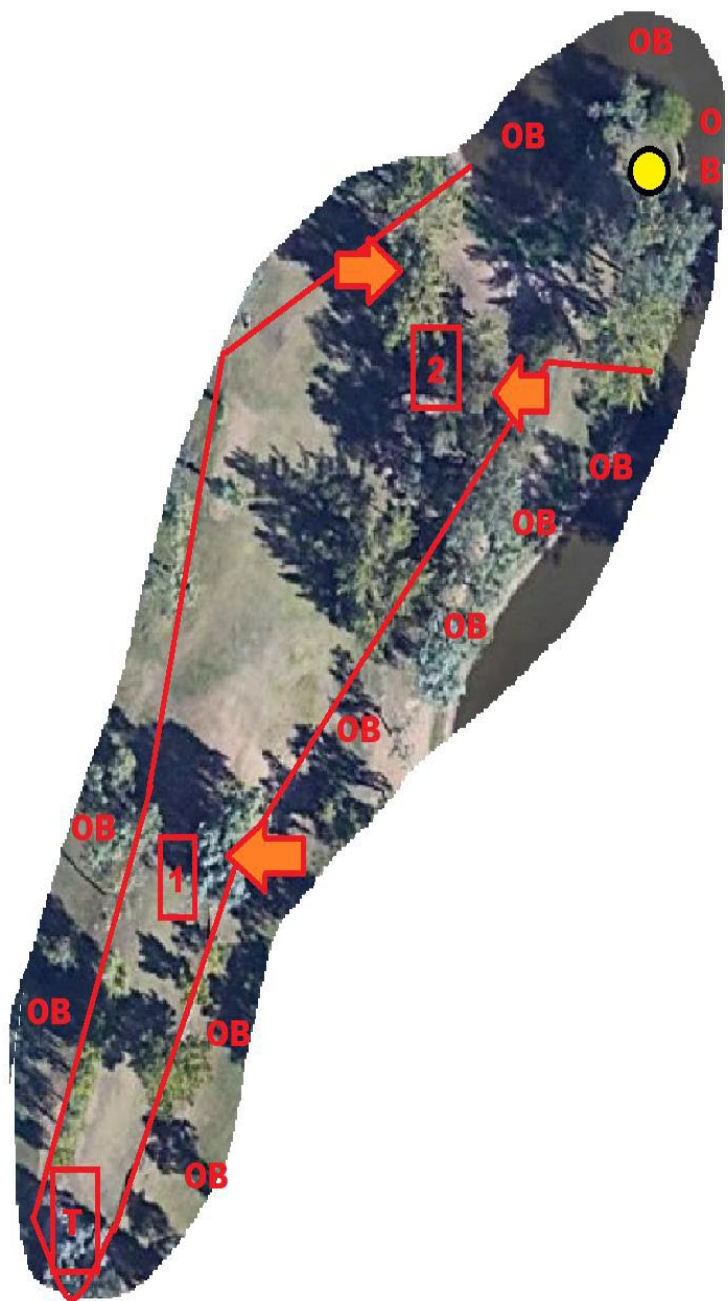


HOLE 16 – Par 4 – 593 Feet

MANDO LEFT of marked tree. If missed, proceed to marked DZ1 with Penalty Stroke. DOUBLE MANDO through marked trees. If missed, Proceed to Marked DZ2 with penalty stroke. Painted Lines and Beyond is OB. Waters Edge defines OB. Play from last in-bounds with Penalty Stroke

Hole Sponsor:

CHAD BELL



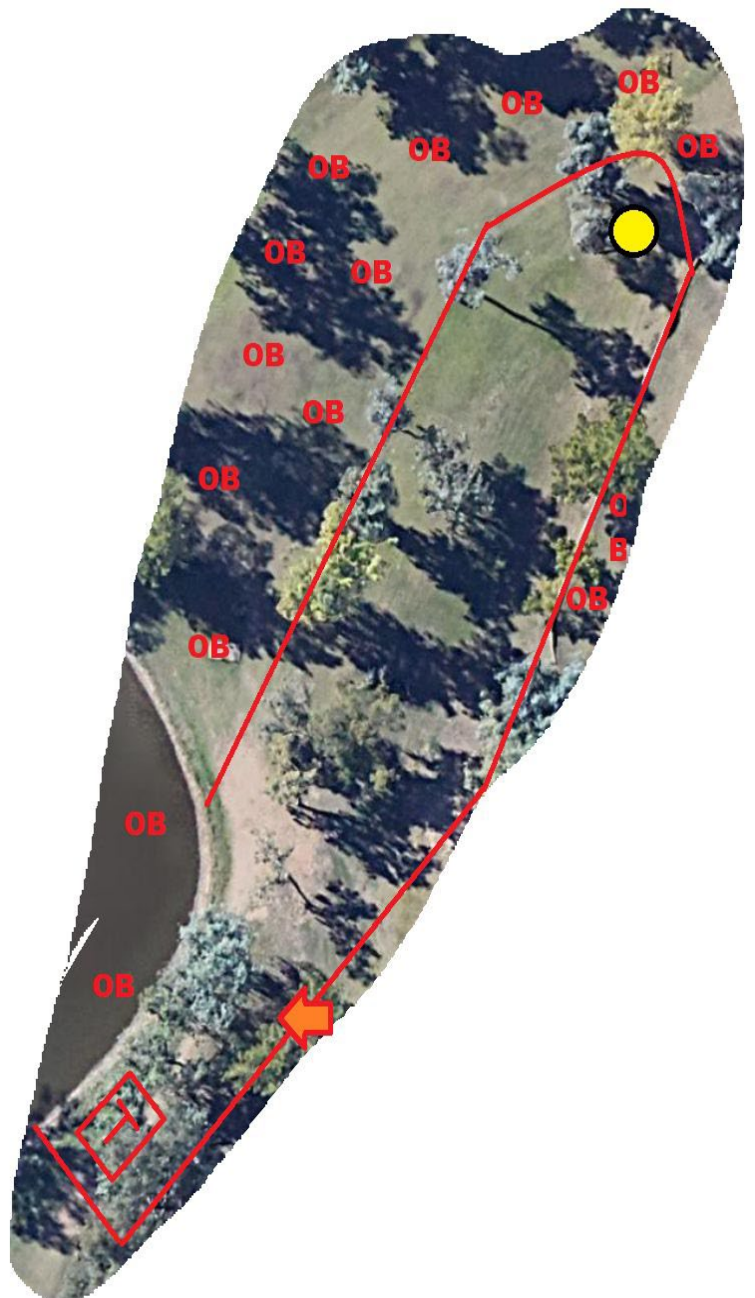
HOLE 17 – Par 3 – 375 Feet

MANDO LEFT of marked tree. If missed, Re-Tee with Penalty Stroke. Painted Lines and Beyond is OB. Wall defines OB where paint stops. Waters Edge defines OB. Play from last in-bounds

Hole Sponsor: with Penalty Stroke.

CHANCE

STEPHENS



HOLE 18 – Par 3 – 405 Feet

Painted Lines and Beyond is OB. Play from last in-bounds with
Penalty Stroke.

Hole Sponsor:

