

Caddy Book OG Flex RimRock

Hole:	Par:	Distance:	Tee Pad:	Basket:	Notes:
Hole 1	3	158	Teepad 1	Basket 1	No OB
Hole 2	3	243	Teepad 2	Basket 2	No OB
Hole 3	4	304	Teepad 3	Basket 3	No OB
Hole 4	4	400	Teepad 4	Basket 4	No OB
Hole 5	3	197	Teepad 5	Basket 5	OB line drawn down left side of fairway and wrapping around long of basket. For pace of play, do not look for discs that roll down hill for longer than 3 minutes per PDGA rules. If no string present, follow line of last available string line.
Hole 6	3	230	Teepad 6	Basket 6	No OB
Hole 7	3	197	Teepad 7	Basket 7, short pin.	Double Mando between marked trees. DZ with stroke penalty if missed.
Hole 8	3	301	Teepad 8	Basket 8	Mando LEFT of marked tree. DZ with stroke penalty if missed. OB road and beyond extreme right of fairway.
Hole 9	3	161	Temp pad 9, down hill from normal tee.	Basket 9	OB line drawn down left side of fairway and behind basket. Where string is not present, follow line of last string available.
Hole 10	3	228	Teepad 10, inside basketball court	Basket 10	OB creek and beyond left. OB on top of or under any building or patio. 2 meter relief provided from all buildings following line of play to basket.
Hole 11	3	145	Teepad 11	Basket 11	OB creek fully surrounded by water. Can lay up short of water.
Hole 12	3	135	Teepad 12, shared with hole 17	Basket 12	OB creek behind teepad.
Hole 13	3	257	Teepad 13	Basket 13, over the hill. Tree marked for line of sight.	OB line drawn down left side of fairway. If disc rolls away, do not look for disc longer than 3 minutes per PDGA rules. If no string present, draw line from last available string.
Hole 14	4	470	Teepad 14, down hill to the left of hole 13's pin.	Basket 14	No OB.
Hole 15	3	233	Teepad 15	Basket 15	OB creek far deep of pin. Do not confuse basket with hole 11.
Hole 16	3	208	Teepad 16	Basket 16, on rocks.	OB creek far deep of pin.

Hole 17	3	175	Teepad 17, shared with hole 12	Basket 17	OB creek fully surrounded by water. OB under or on top of buildings or patios. 2 meters relief given from buildings following line of play to basket.
Hole 18	3	286	Teepad 18	Basket 18	OB creek and beyond right. OB parking lot and beyond left. OB line drawn by corner of parking lot connecting to creek. OB gravel road and beyond left. OB volleyball court and wooden circle court.
Hole 19	3	226	Temp Teepad 19, past parking lot.	Temp pin 19 by creek.	OB creek and beyond right. OB road and beyond left. OB drawn long between road and creek. Fully surrounded by rocks inside rock cross is OB.
Total Par:	<u>60</u>	<u>4554</u>	Total Distance:		

Hole 1 • Par 3 • 158 ft



Hole 2 • Par 3 • 243 ft



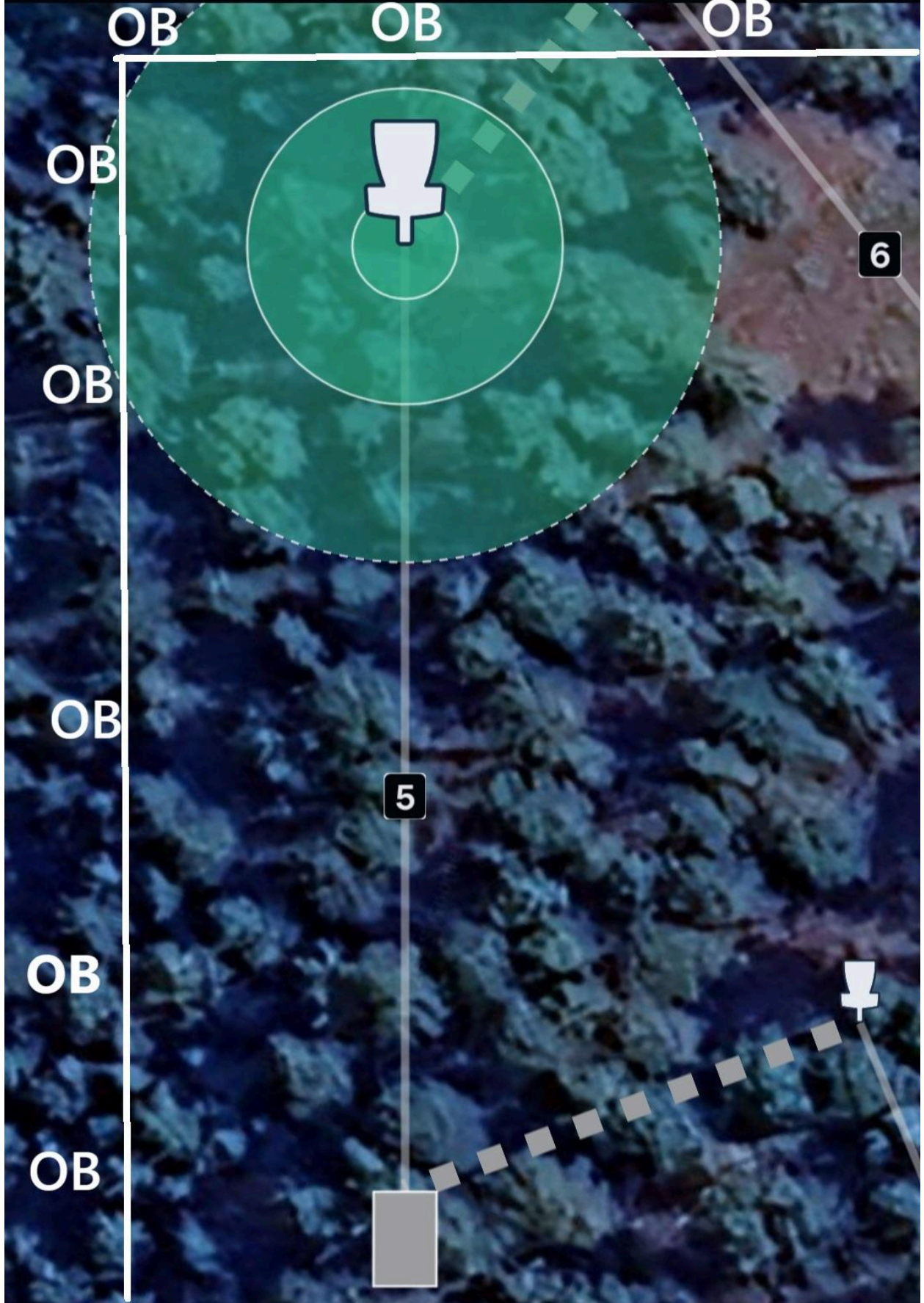
Hole 3 • Par 4 • 304 ft



Hole 4 • Par 4 • 408 ft



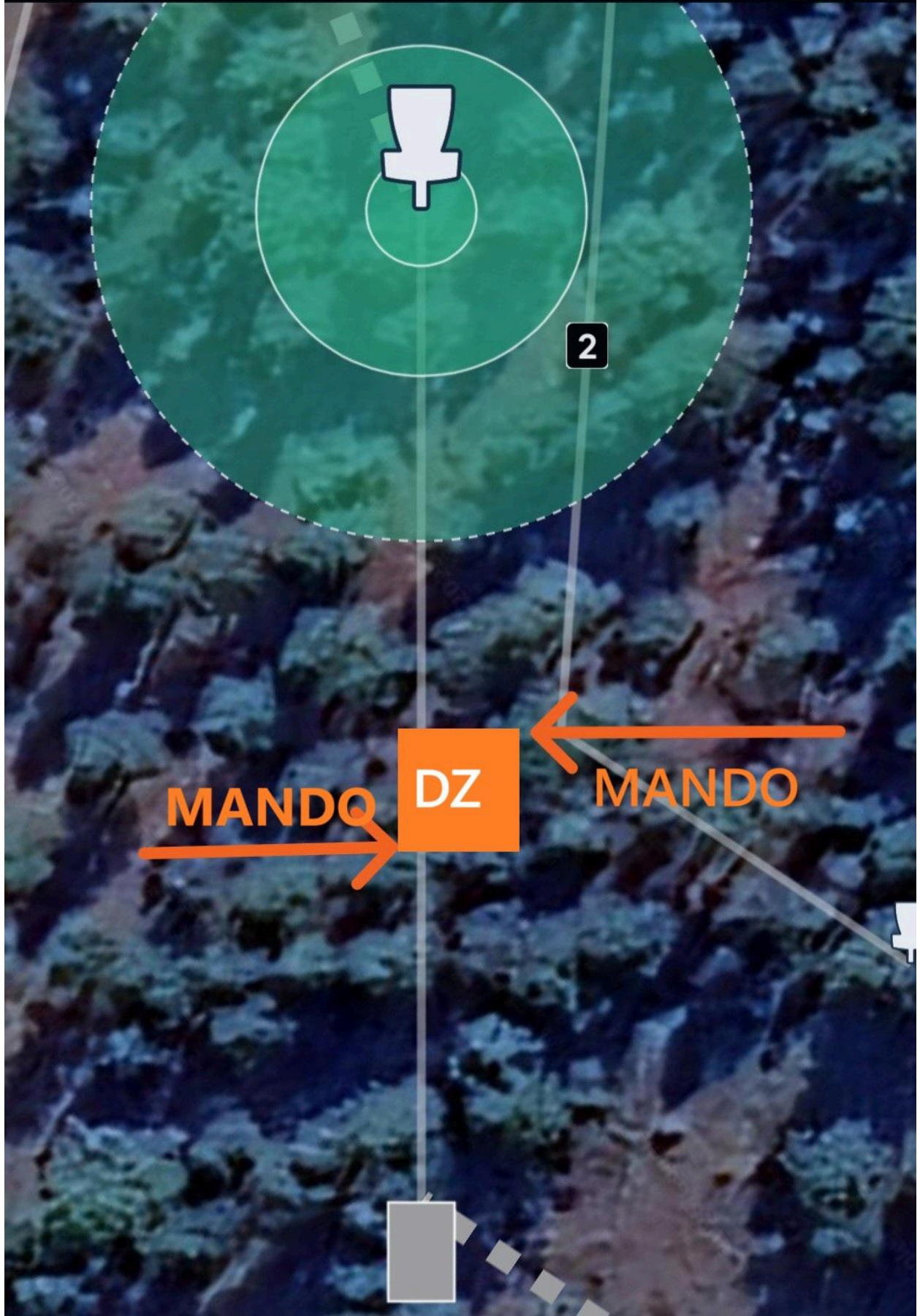
Hole 5 • Par 3 • 197 ft



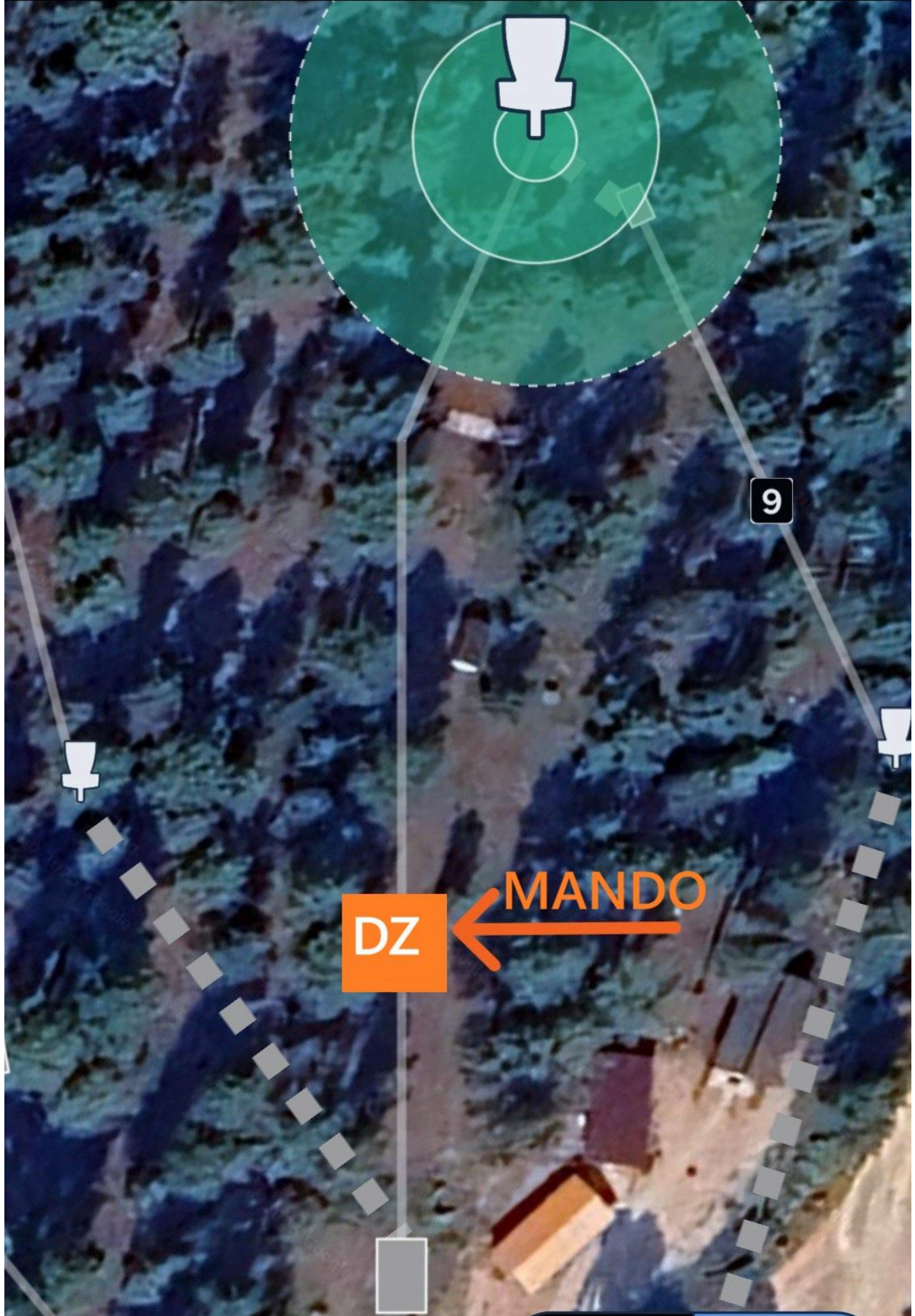
Hole 6 • Par 3 • 230 ft



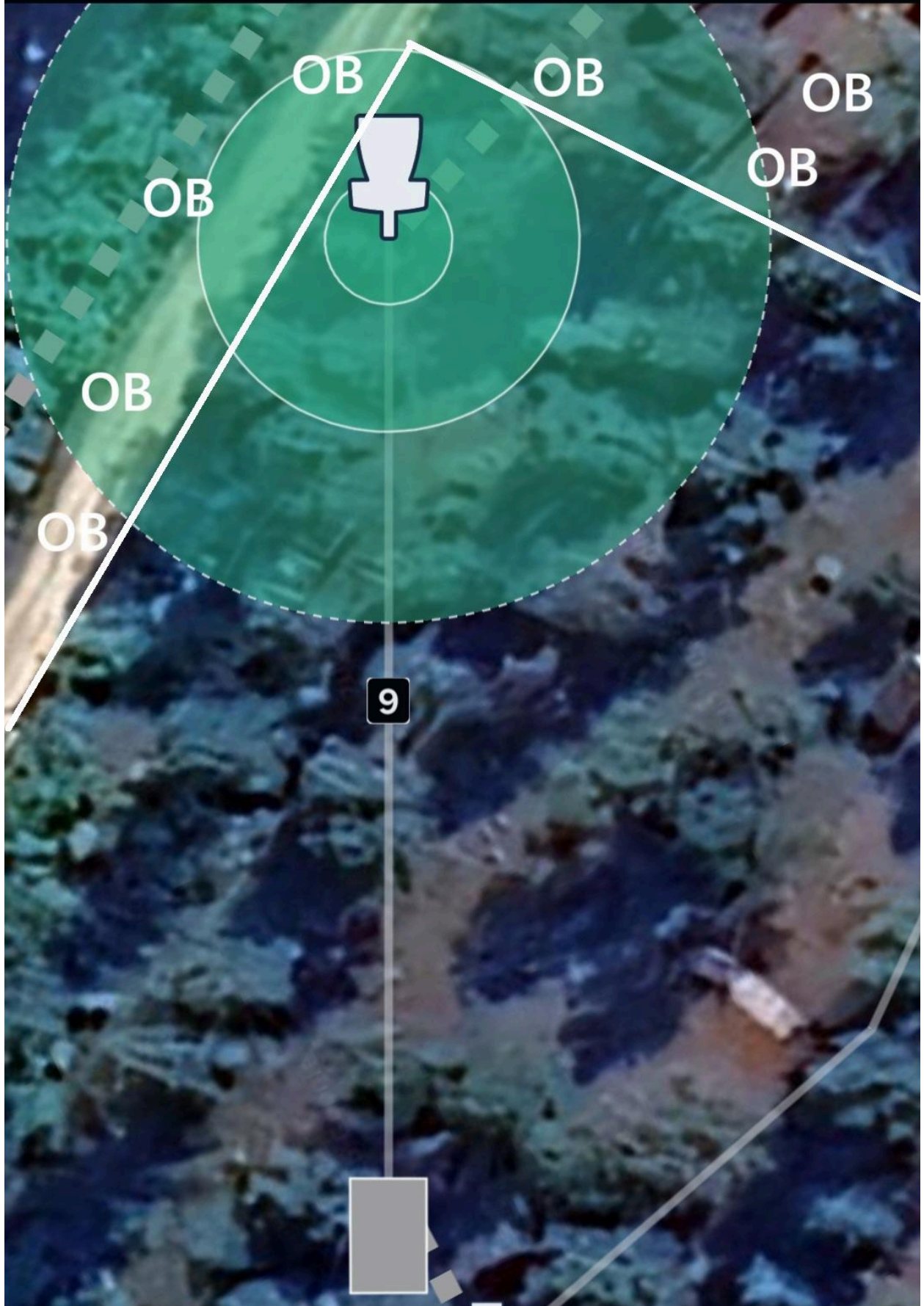
Hole 7 • Par 3 • 197 ft



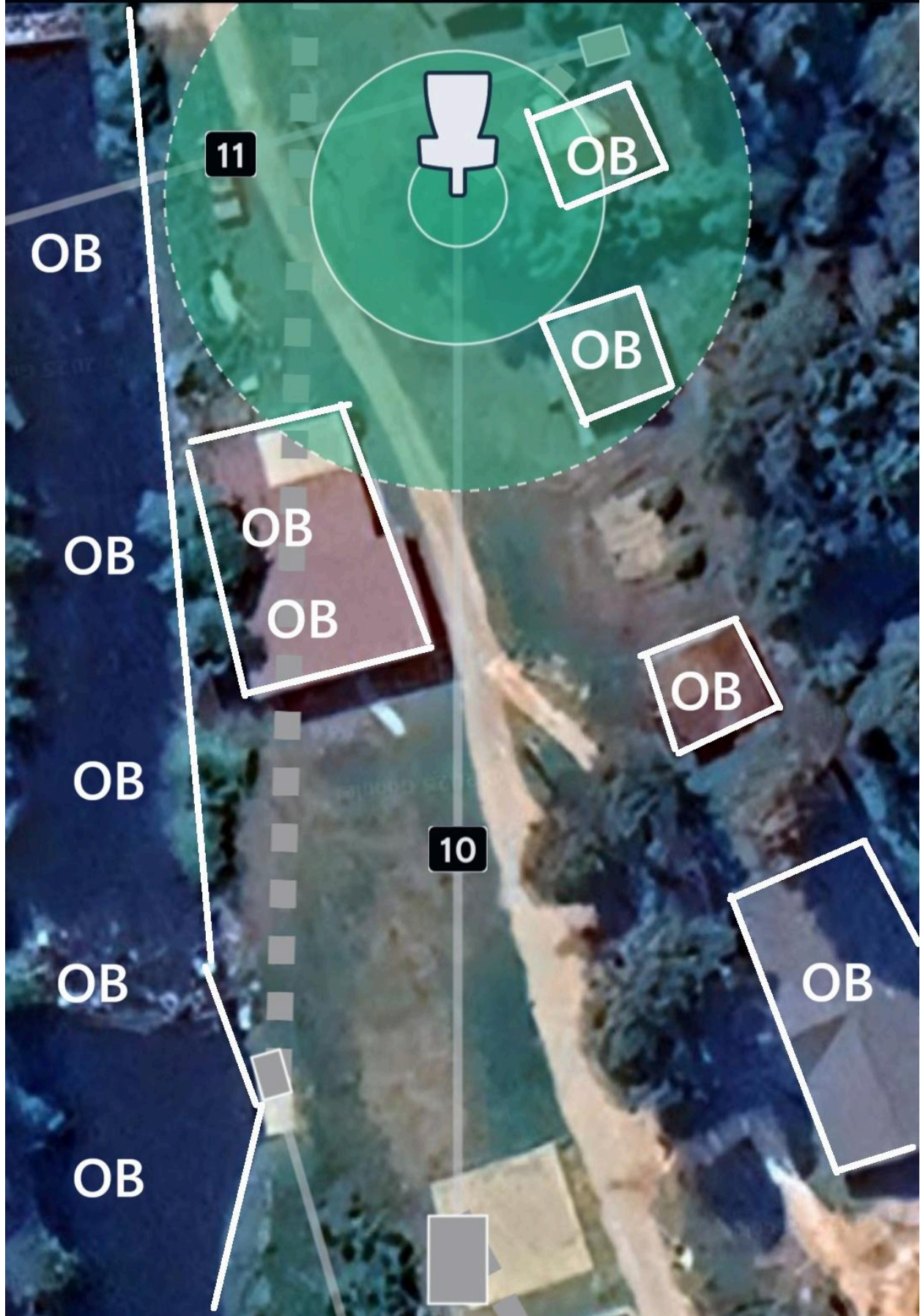
Hole 8 • Par 3 • 301 ft



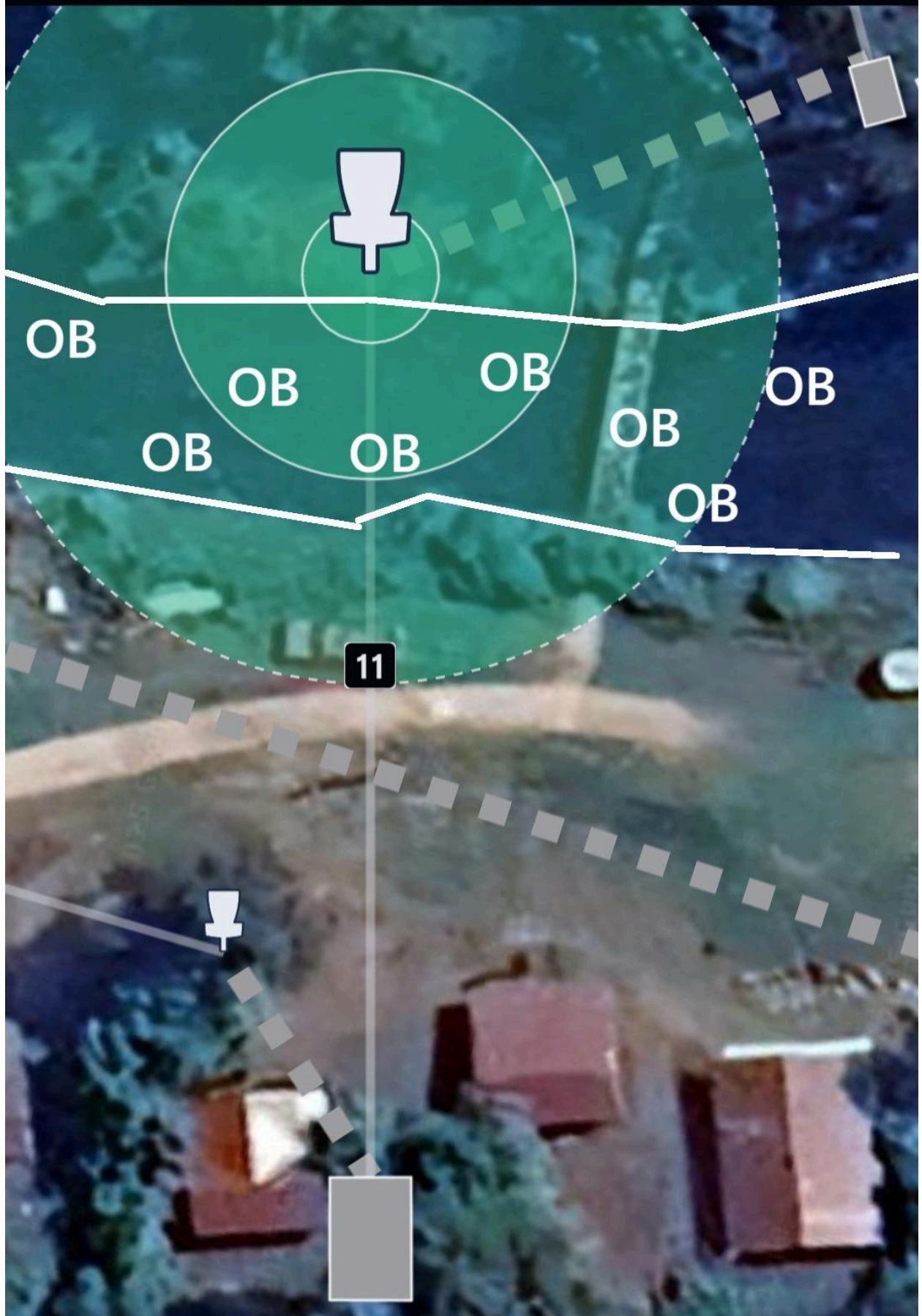
Hole 9 • Par 3 • 161 ft



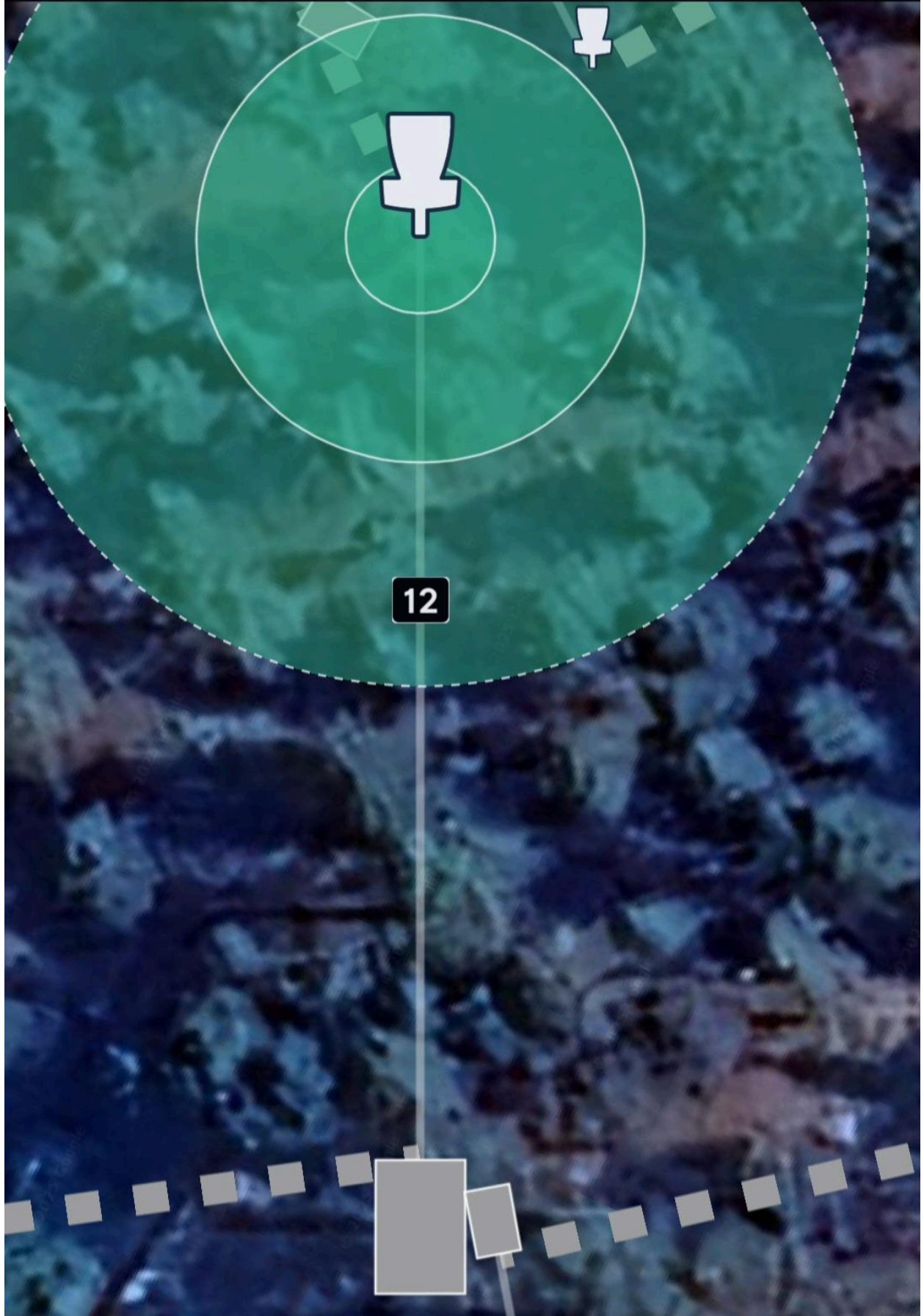
Hole 10 • Par 3 • 228 ft



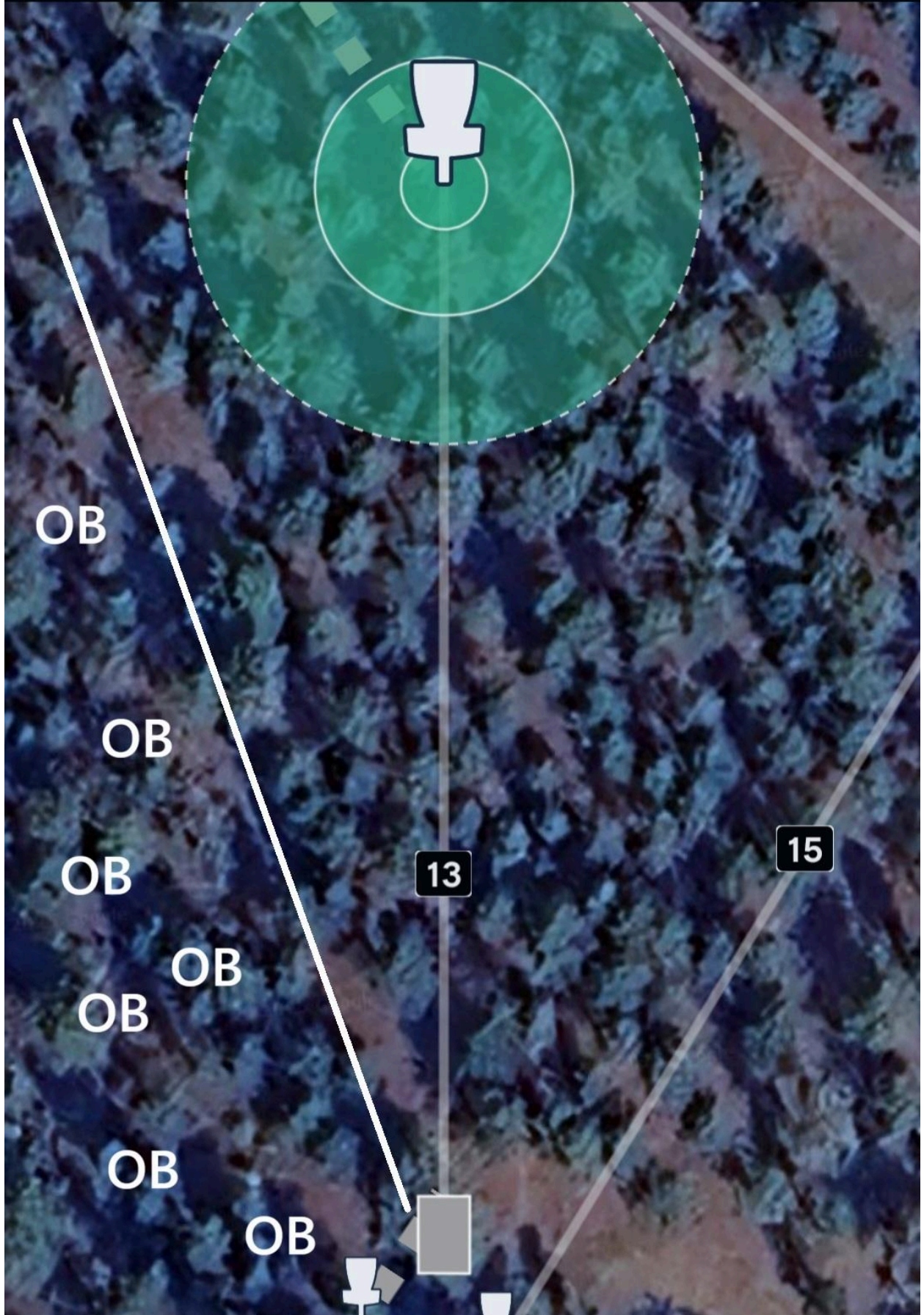
Hole 11 • Par 3 • 145 ft



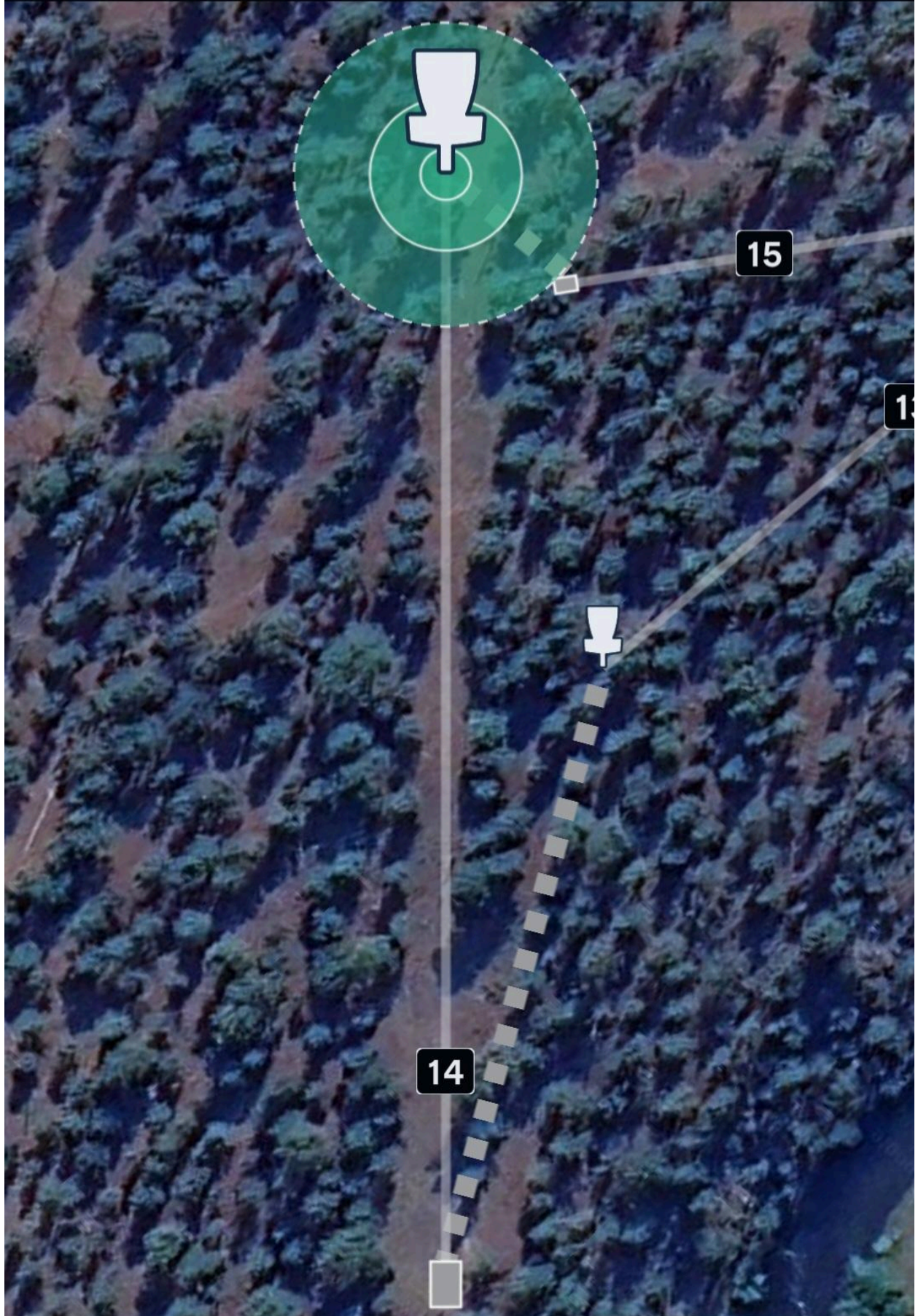
Hole 12 • Par 3 • 135 ft



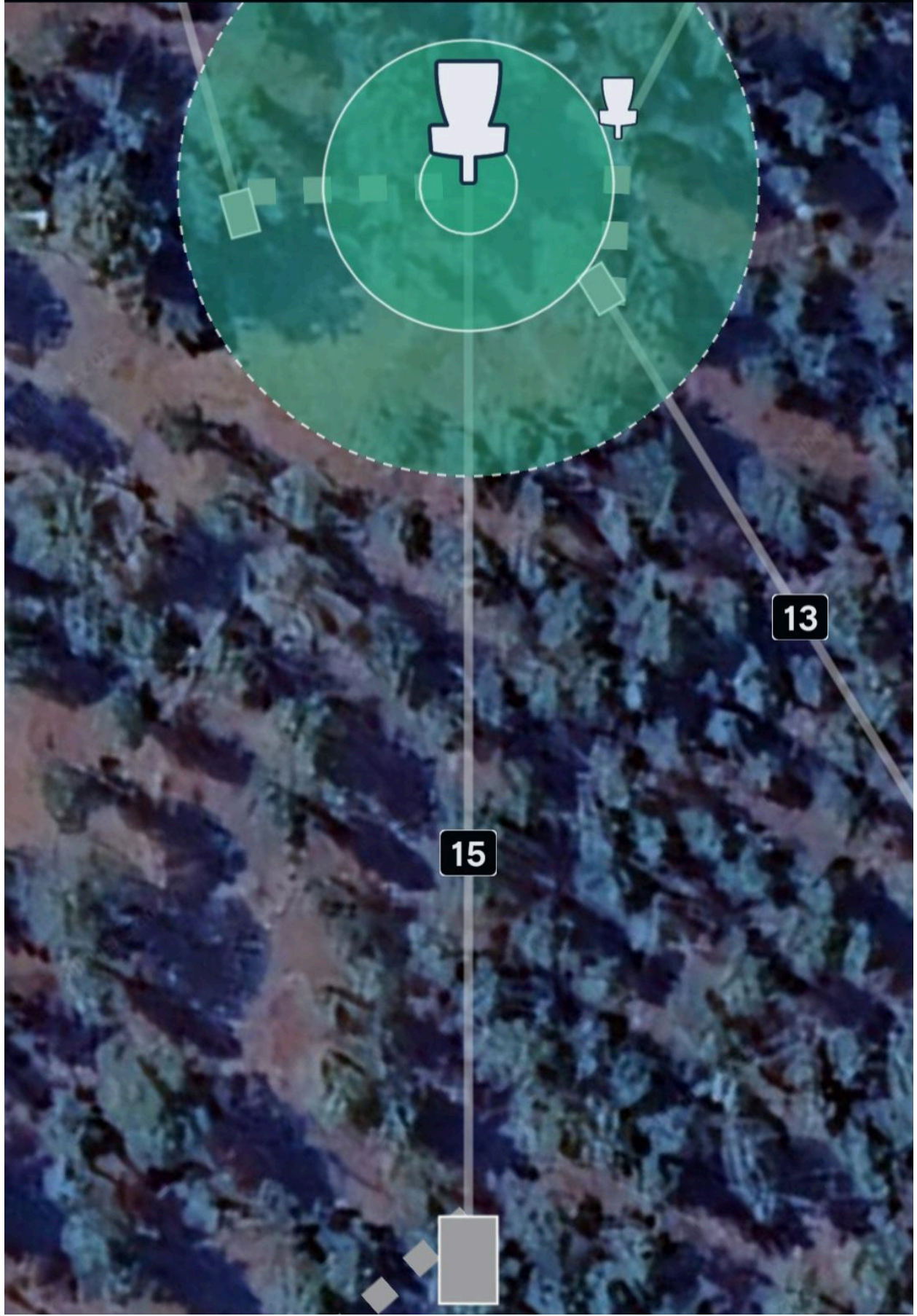
Hole 13 • Par 3 • 257 ft



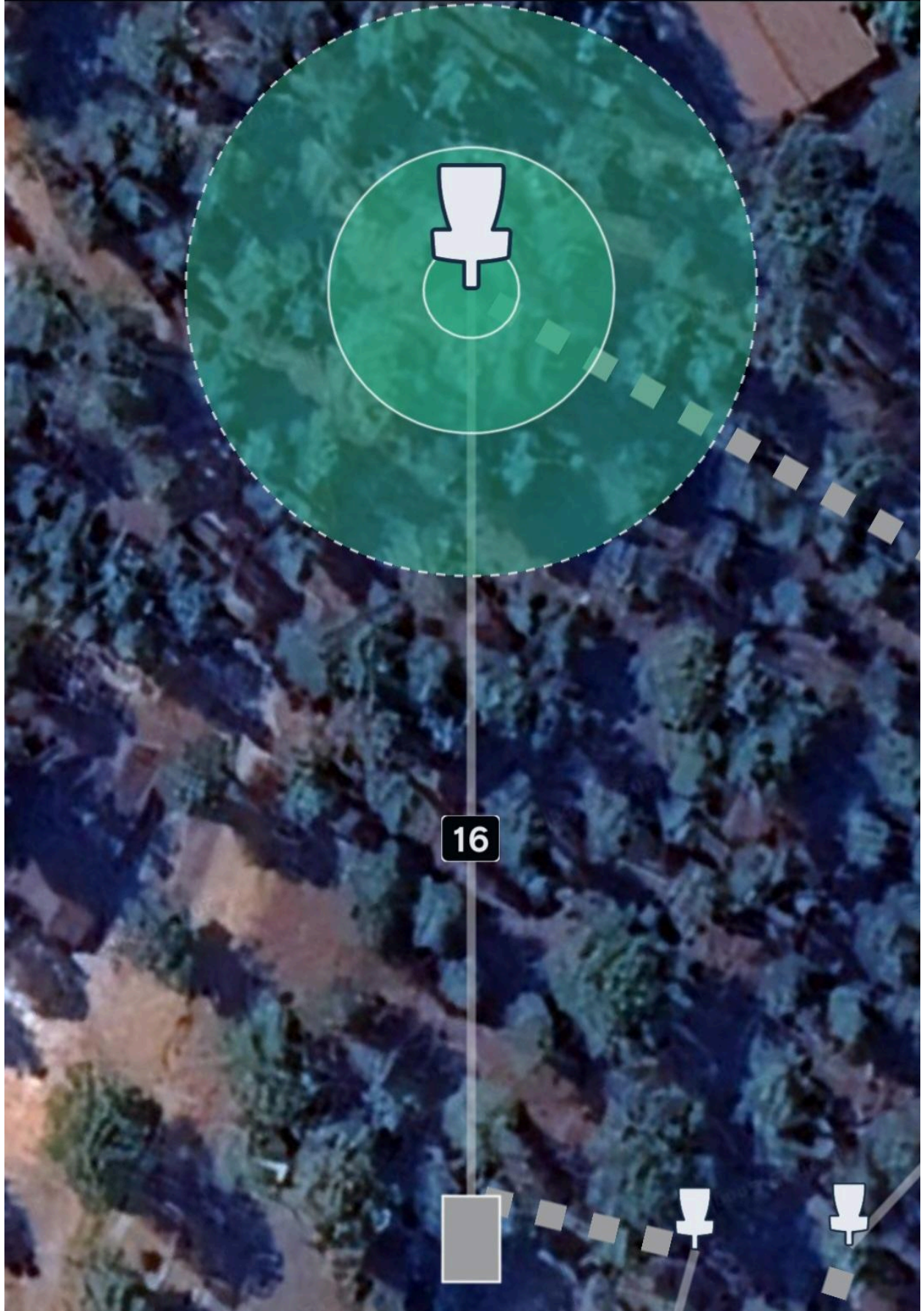
Hole 14 • Par 4 • 470 ft



Hole 15 • Par 3 • 233 ft



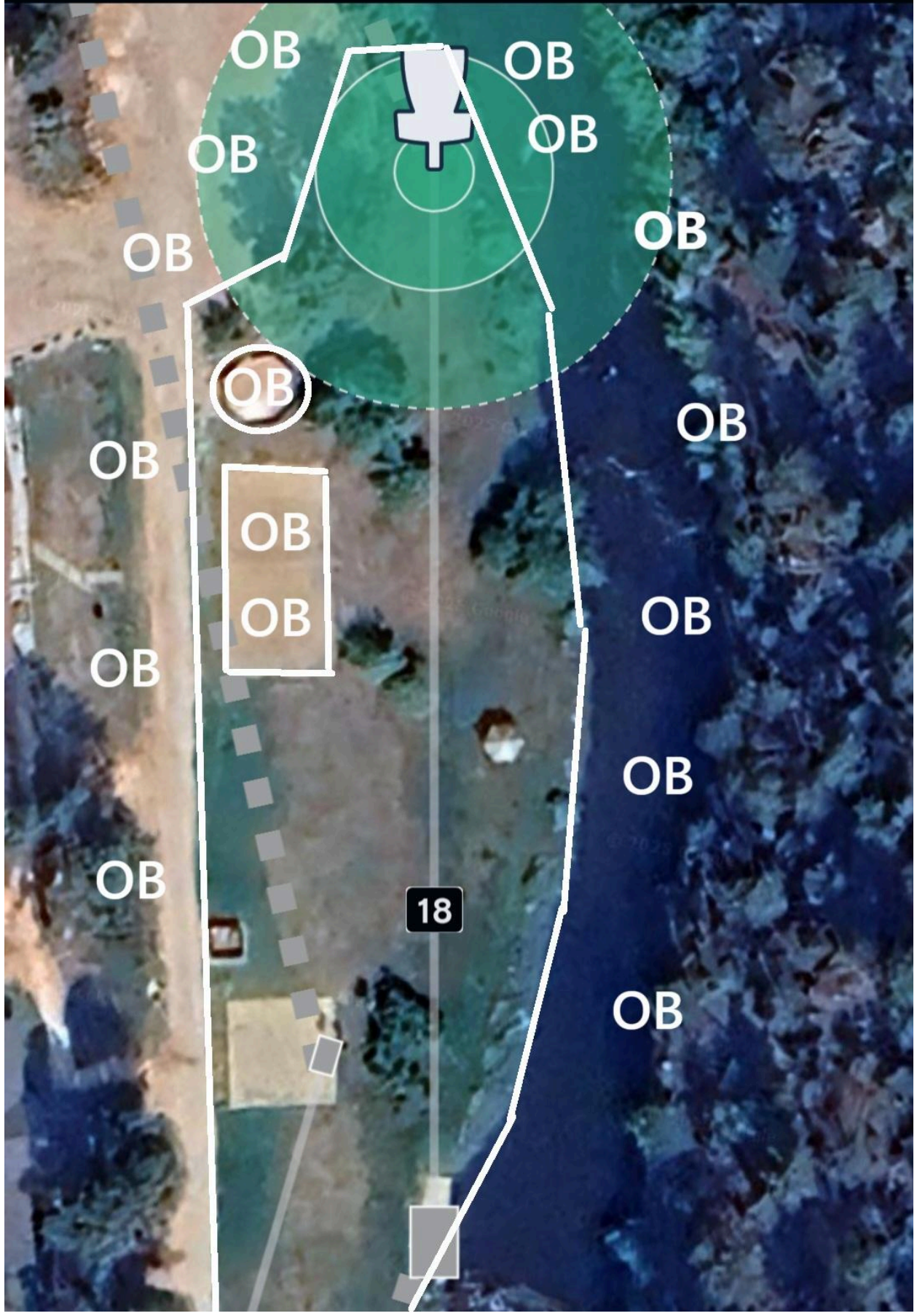
Hole 16 • Par 3 • 208 ft



Hole 17 • Par 3 • 175 ft



Hole 18 • Par 3 • 286 ft



Hole 19 • Par 3 • 226 ft

