

OG Flex Series @ LaCroix

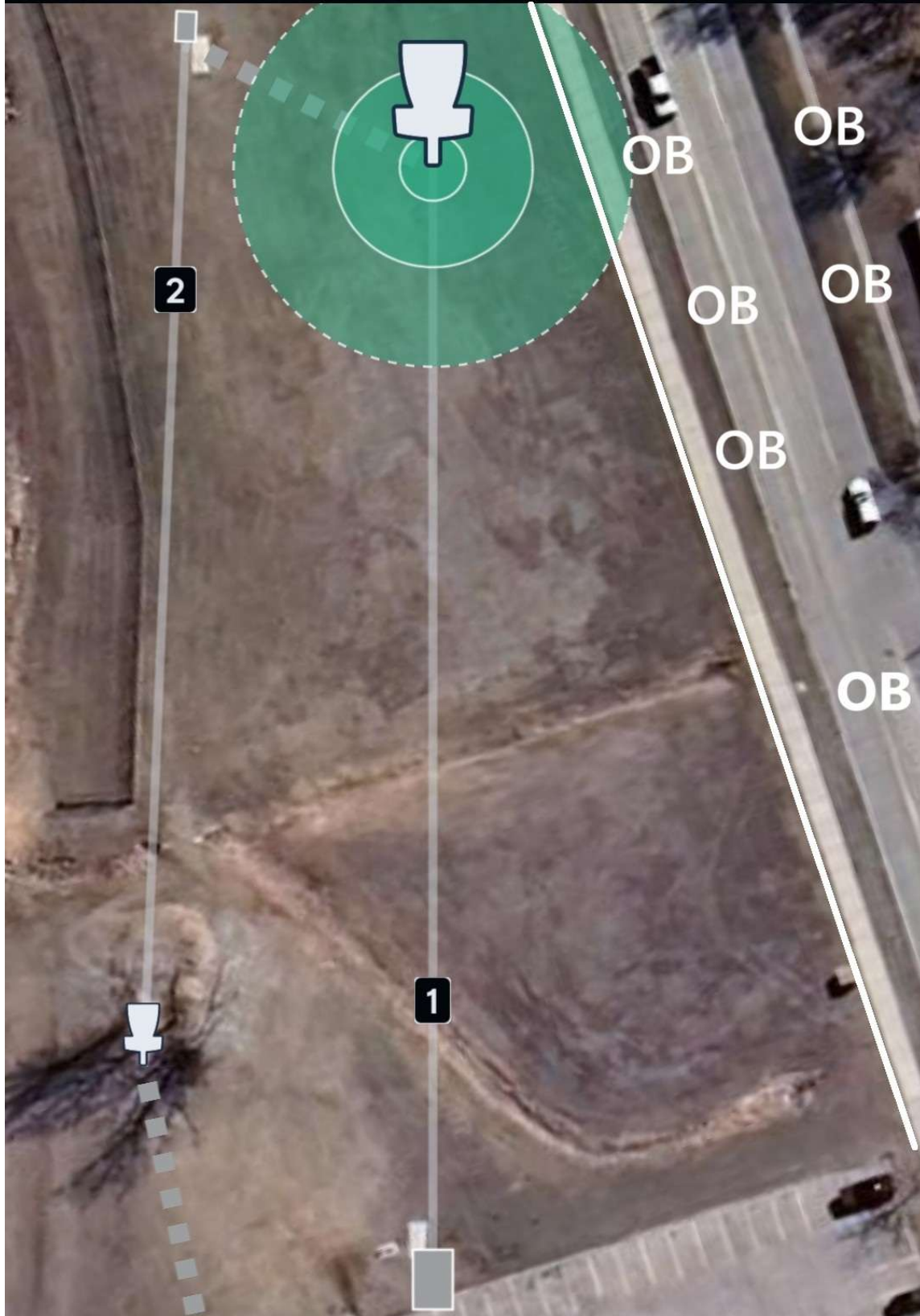
LaCroix Course Notes

Hole #	Tee Pad	Basket	Distance	Par	Notes
1	Tee Pad 1	Basket 1	357 ft	3	OB Right sidewalk and beyond.
2	Tee Pad 2	Basket 2	339 ft	3	OB right of fence, marked line connecting fence to concrete, concrete and beyond
3	Temp Pad 3	Basket 3	300 ft	3	River Island Hole . River starts at the concrete drainage. No drop zone. If you cross OB, take from where you last crossed inbounds.
4	Tee Pad 4	Basket 4	315 ft	3	OB creek and beyond. OB deep fence line and beyond.
5	Tee Pad 5	Basket 5	193 ft	3	OB fence and beyond.
6	Temp Pad 6	Basket 6	351 ft	3	OB right of fence line and beyond. OB deep of fence line and beyond.
7	Tee Pad 7	Basket 7	360 ft	3	
8	Tee pad 8	Basket 8	334 ft	3	MANDO LEFT of marked tree – if missed proceed to DZ with a stroke penalty.
9	Tee pad 9	Basket 9	406 ft	3	OB marked line and tall grass and beyond right.
10	Tee pad 10	Basket 11	595 ft	4	MANDO RIGHT of marked tree – if missed proceed to the DZ with a stroke penalty. OB right creek and beyond

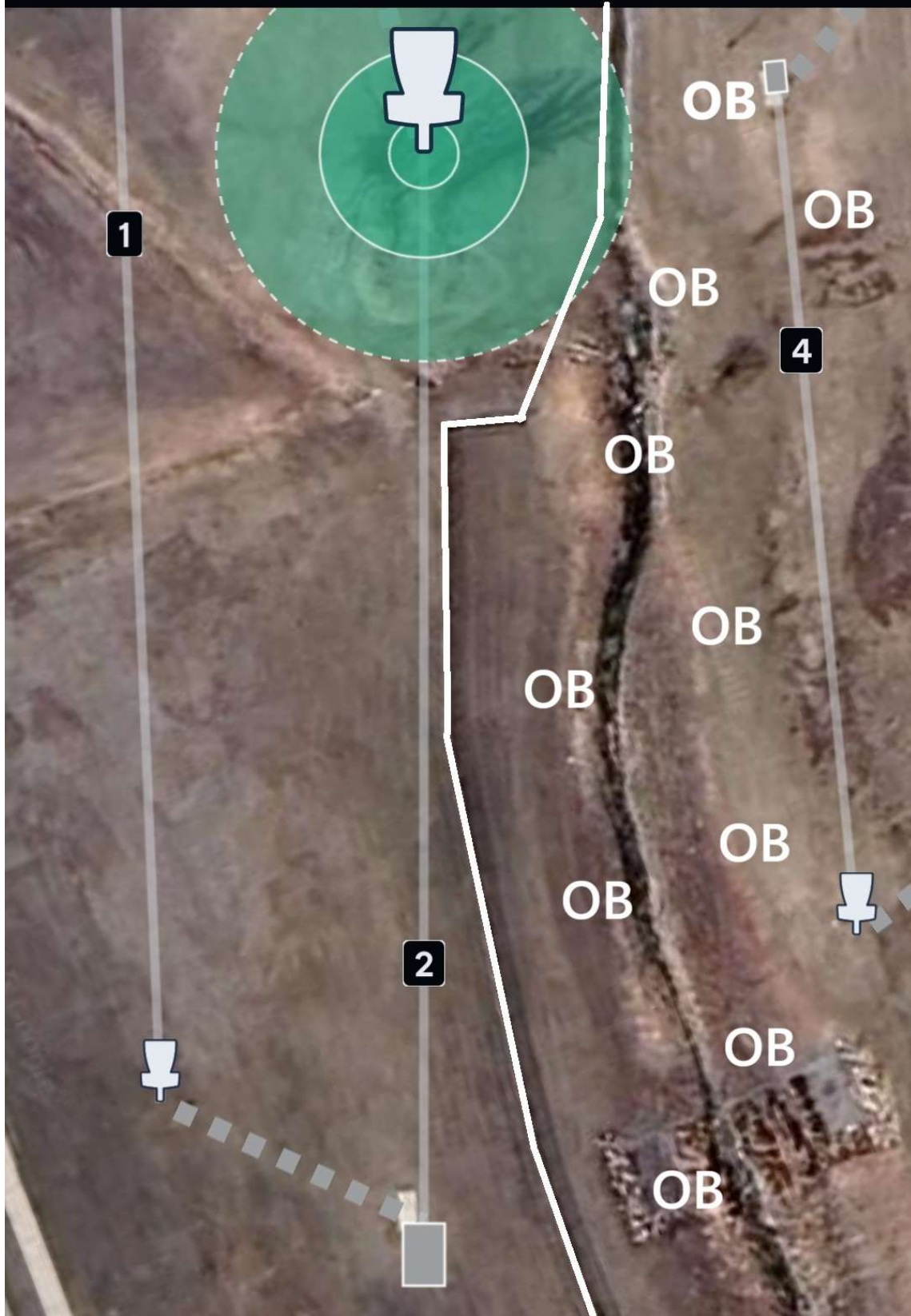
Hole #	Tee Pad	Basket	Distance	Par	Notes
12	Tee pad 12	Basket 12	543 ft	4	RIVER / ISLAND HOLE . River is formed by Concrete drainage ditch and OB marked line after the creek. OB marked line and left. OB sidewalk and right. OB pavement and beyond. Plays as traditional OB.
13	Tee pad 13	Basket 13	372 ft	3	OB left fence line and beyond.
14	Tee pad	Temp Basket	359 ft	3	OB left fence line and beyond.

	14	14			OB deep fence line and beyond.
15	Temp pad 15	Basket 15	244 ft	3	DOUBLE MANDO , If missed, proceed to the DZ with stroke penalty. Sidewalk and beyond is OB.
16	Tee pad 16	Basket 16	244 ft	3	ISLAND HOLE . If Island is missed proceed to the DZ with a stroke penalty. All following OB plays as normal OB. Island is formed by the sidewalk, concrete drainage and flagged line.
16A	Temp Pad 16 A	Basket 16A	308 ft	3	Teeing From OB . OB sidewalk and beyond right. OB creek/concrete drainage and beyond left.
17	Temp pad 17	Basket 17	395 ft	3	OB sidewalk and beyond right.
18	Tee pad 18	Basket 18	235 ft	3	DOUBLE MANDO , if missed proceed to the DZ with stroke penalty. OB sidewalk and beyond deep.
		Totals	~5,962 ft	56	

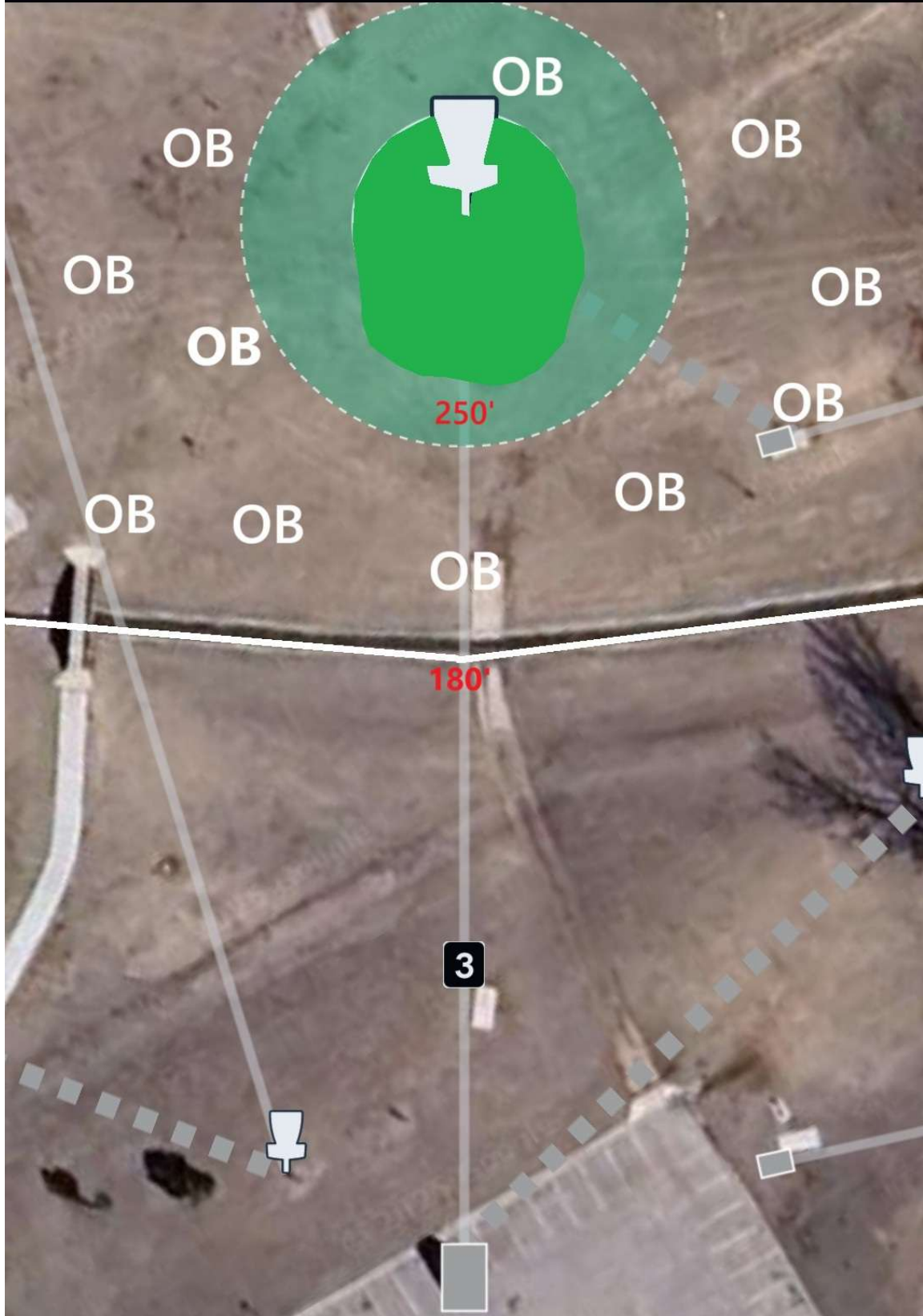
Hole 1 • Par 3 • 357 ft



Hole 2 • Par 3 • 339 ft



Hole 3 • Par 3 • 300 ft



Hole 4 • Par 3 • 268 ft



Hole 5 • Par 3 • 249 ft



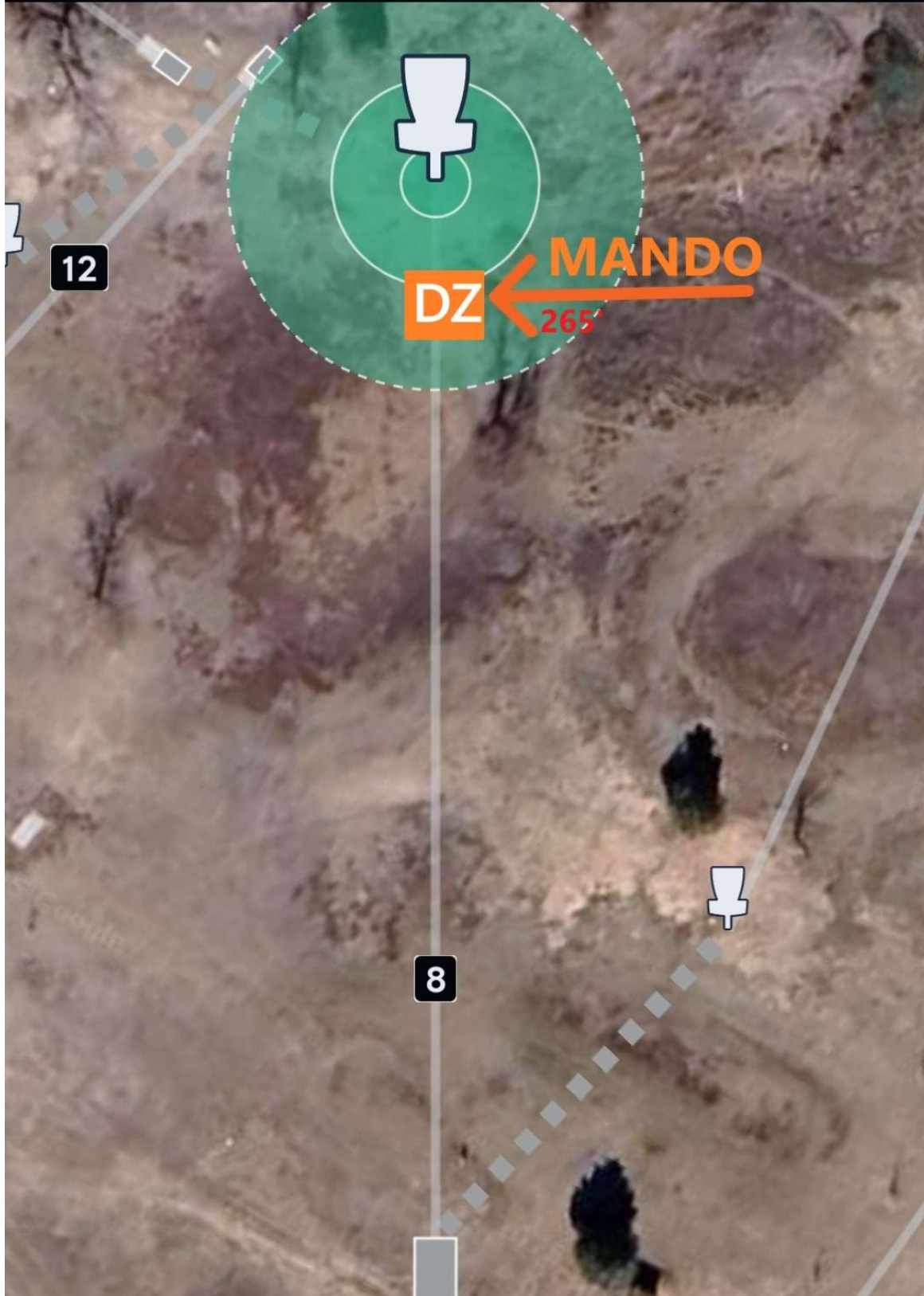
Hole 6 • Par 3 • 351 ft



Hole 7 • Par 3 • 360 ft



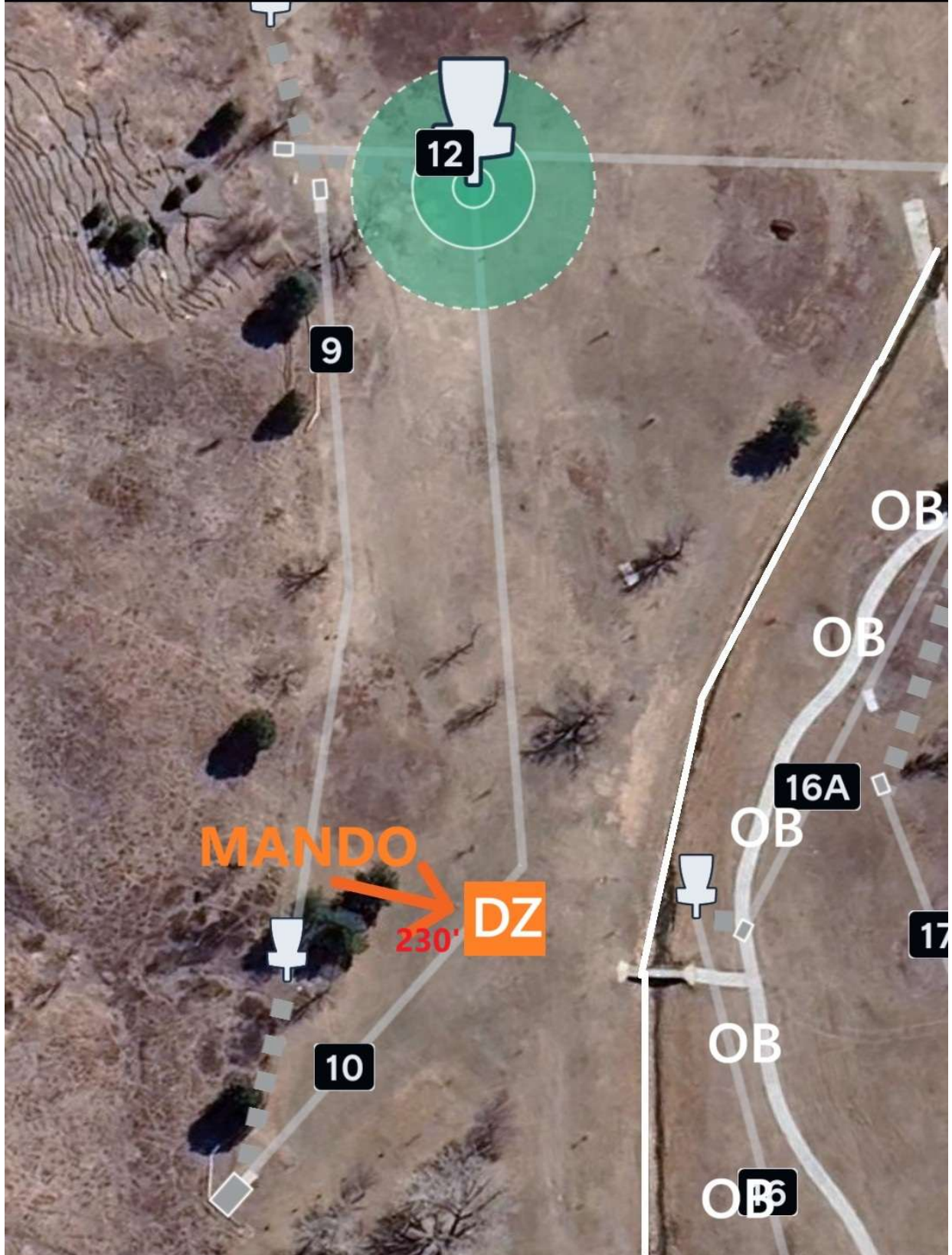
Hole 8 • Par 3 • 334 ft



Hole 9 • Par 3 • 427 ft



Hole 10 • Par 4 • 595 ft



Hole 12 • Par 4 • 543 ft



Hole 13 • Par 3 • 372 ft



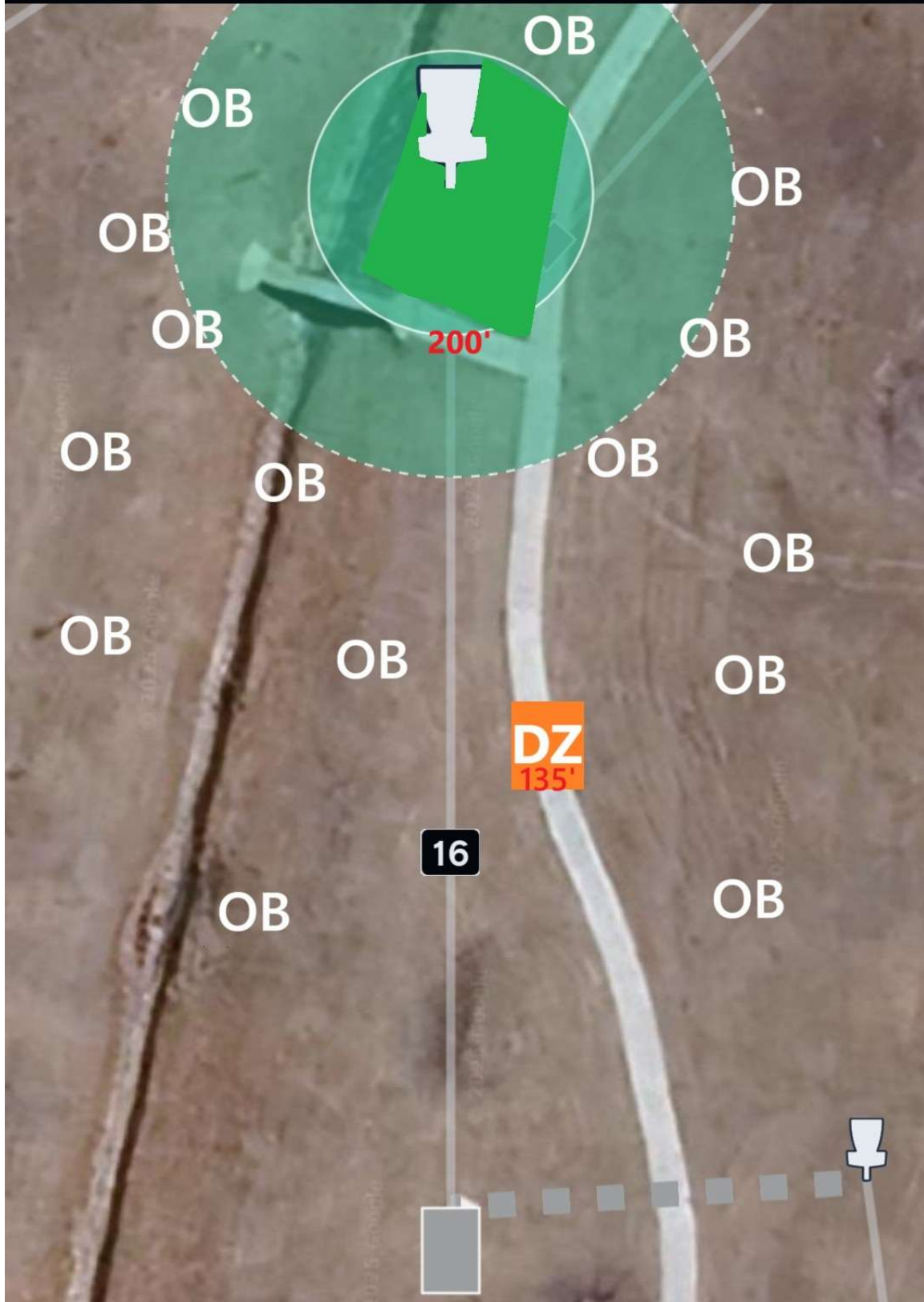
Hole 14 • Par 3 • 359 ft



Hole 15 • Par 3 • 244 ft



Hole 16 • Par 3 • 235 ft



Hole 16A • Par 3 • 308 ft



Hole 17 • Par 3 • 395 ft



Hole 18 • Par 3 • 219 ft

