

Kings Pine Open

CADDIE BOOK

Kings Pine DiscGolfPark, PEI

SEPTEMBER 6 & 7, 2025

KINGS PINE

Welcome to the Kings Pine Open 2025

Welcome to Flickline Tour Stop #3 and one of our favourite courses, Kings Pine 2.0!

We are back this year with more of the things we love. We once again have the course in tip-top shape and can't wait for you to put your full bag to work here. Our players' lounge was a huge hit last year, and we once again have saved you a space around the campfire (weather permitting, of course). The Gill family is opening up their disc golf heaven for all of us to come spend the weekend. Bring your discs, your musical instruments, and whatever else you need to have a great time and see why this event is a fan favourite.

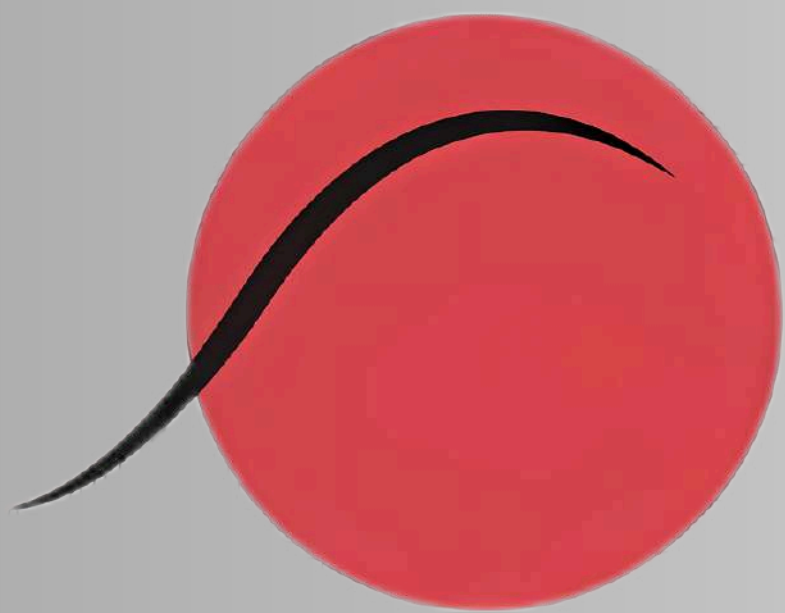
Camping is available on site and can be serviced by ensuring any of the listed TDs. There will be a BBQ on Saturday only which will be available for purchase. We will also have Chain Reaction on-site that day as well.

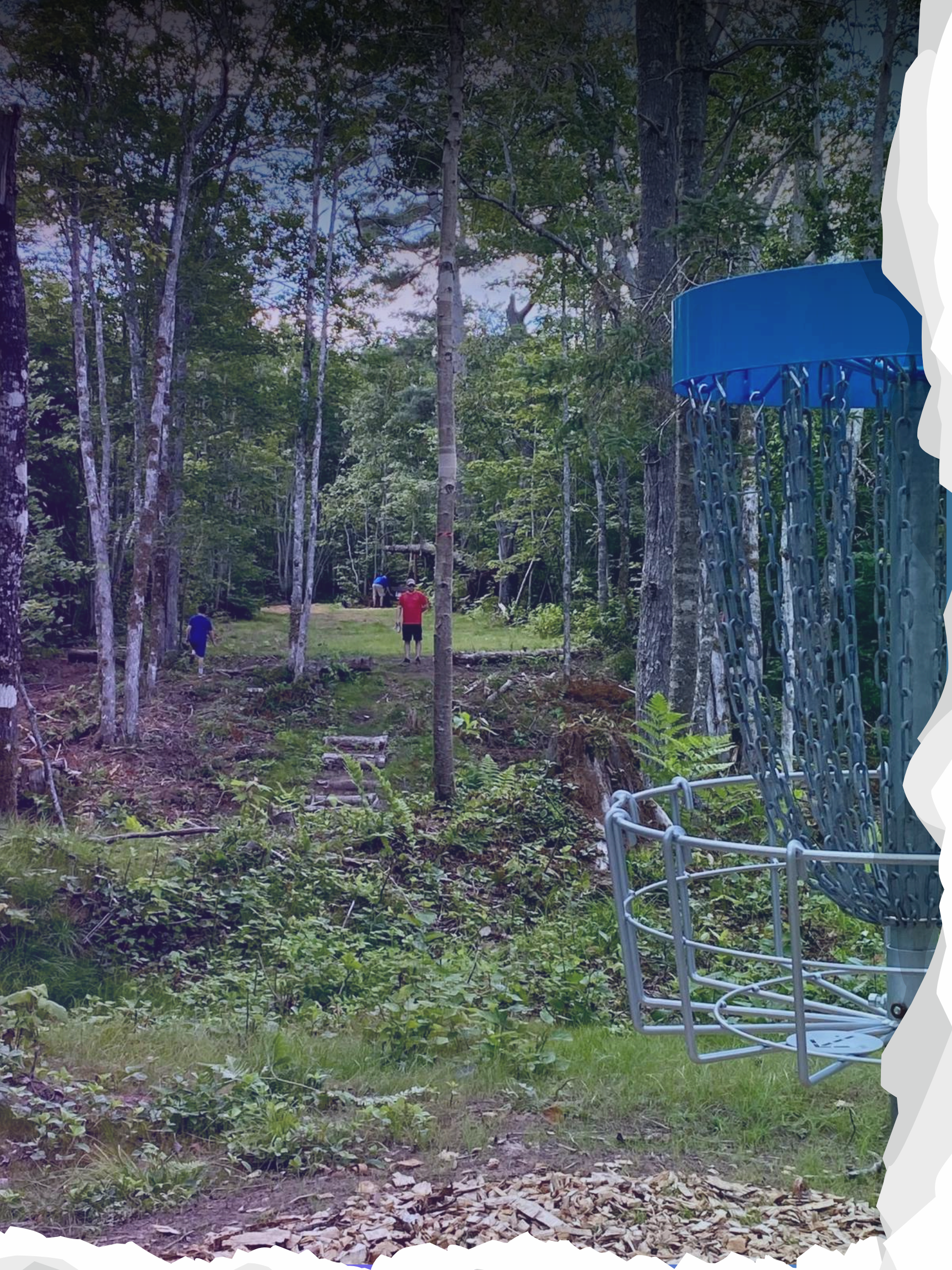
You can expect Flickline prizes and a great atmosphere. We promise it is worth the trip!

Can't wait to see you all soon at one of our country's best courses!

Ben Smith
Tournament Director

SPECIAL THANKS TO OUR SPONSORS





KINGS PINE



TOURNAMENT INFORMATION

Kings Pine Open 2025

September 6 & 7, 2025

PDGA Sanctioned B-Tier
Singles Tournament

Saturday – 2 Rounds

Sunday – 1 Round

Location

Kings Pine DiscGolfPark

Gill Rd, Mount Stewart, PE C0A 1T0

TD Contact Info

Ben Smith | 902.669.0764 | laughingbenjamin@gmail.com

Luc Richard | 506.874.1001 | Lucrichard820@gmail.com

Course Layout

Blue Tees: MPO, MP40, MA1

Hybrid Layout: FPO, FP40, MP50, FA1, MA40, FA40

Red Tees: MA50, MA2, FA2, FA3, MJ18



TOURNAMENT FEATURES

Practice baskets & warm-up area

Players Lounge – a cool place to hang before or after rounds

BBQ on Saturday from 11:00 am – 6:00 pm

Water Refill Stations throughout the course.

Snacks available at Hole 8/9.

Washroom located at check-in & Hole 9.

Campfire, acoustic jams, and hangout on Saturday evening around 7pm until late located near Tournament Central (optional).

Player's Pack:

- No Charge for Practice Rounds on Friday, September 5
- Green fees for 3 rounds on Saturday & Sunday
- Choice between \$20.00 gift card to The Handpie Company **OR** \$20.00 store credit to Chain Reaction Disc Golf Supply

Important Note: Chain Reaction will be on-site on Saturday only. If you do not use your store credit at the event, you can redeem it online or in person at the Chain Reaction store.



Tee Times

Official tee times posted after 8:00pm on September 4.

IMPORTANT: All players MUST check in at the Players Lounge.

Players are required to be at Hole 1 a minimum of 15 minutes prior to their tee time.

Saturday Round 1 – Projected Start Times

MA50, MA2, FA2, MJ18: 8:30am – 9:30am

FPO, FP40, MP50, FA1, MA40, FA40: 9:40am – 10:50am

MPO, MP40, MA1: 11:00am – 12:10pm

Saturday Round 2 – Projected Start Times

MA50, MA2, FA2, MJ18: 1:00pm – 2:00pm

FPO, FP40, MP50, FA1, MA40, FA40: 2:10pm – 3:30pm

MPO, MP40, MA1: 3:30pm – 4:30pm

Sunday Round 3 – Projected Start Times

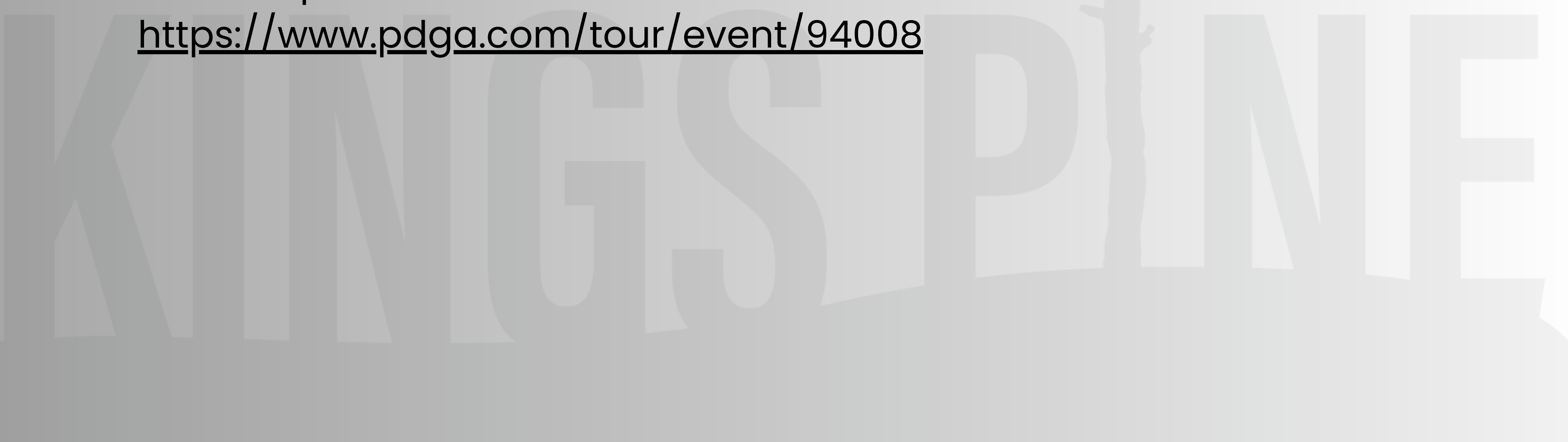
MA50, MA2, FA2, MJ18: 8:00am – 9:00am

FPO, FP40, MP50, FA1, MA40, FA40: 9:10am – 10:20am

MPO, MP40, MA1: 10:30am – 11:50am

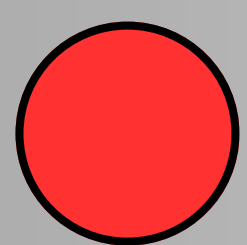
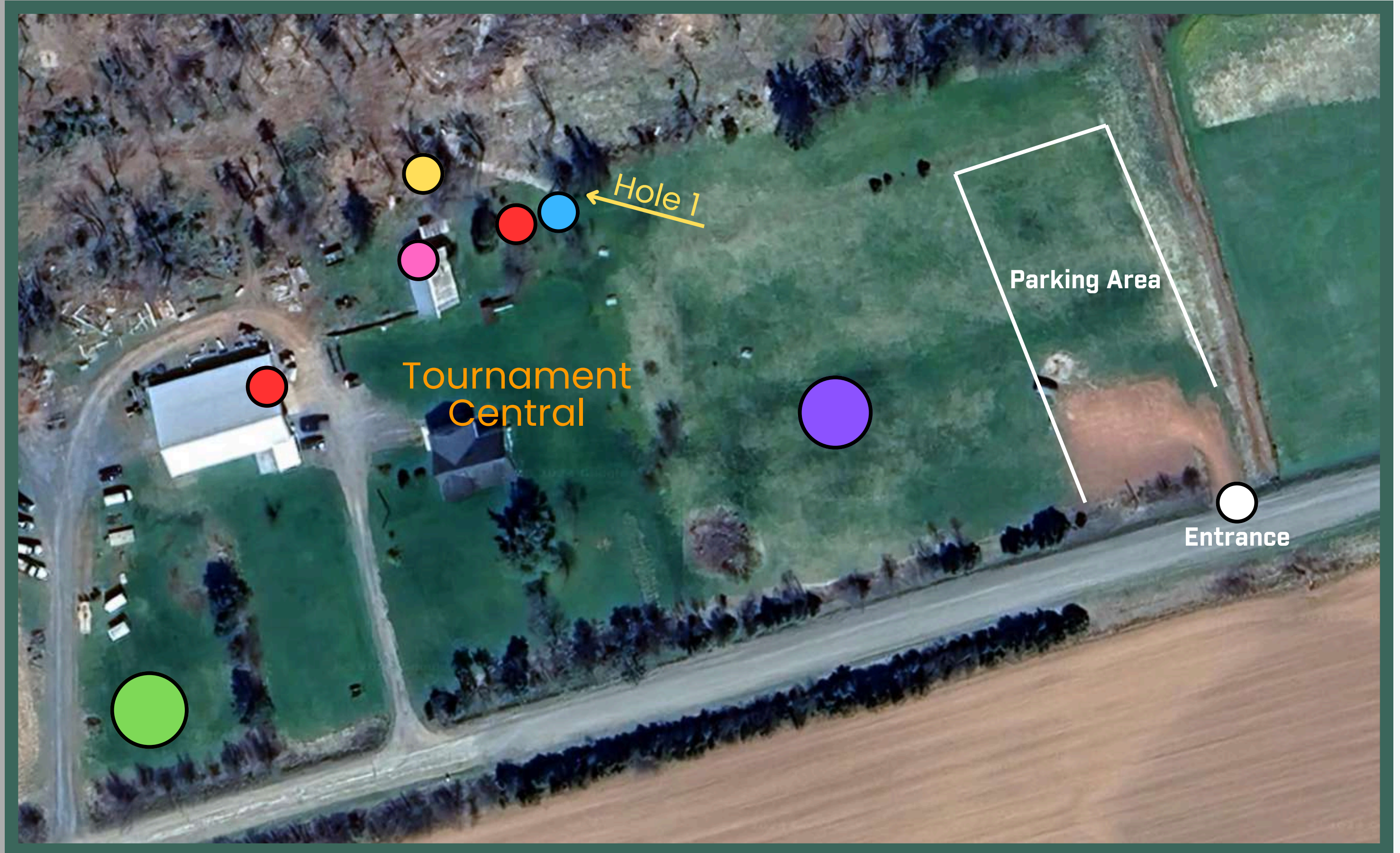
Note: These are projected start times and are subject to change due to unforeseen circumstances. It is the player's responsibility to ensure they know their tee time and arrive 15 minutes prior to their tee time.

<https://www.pdga.com/tour/event/94008>

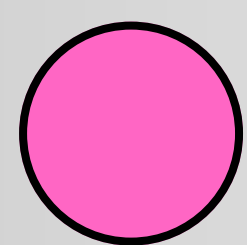




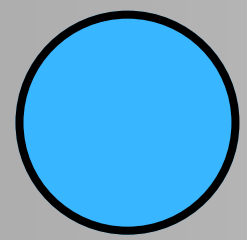
KINGS PINE MAP



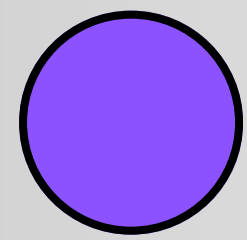
Washrooms



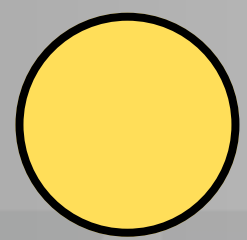
Players lounge



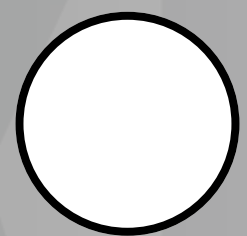
Water station



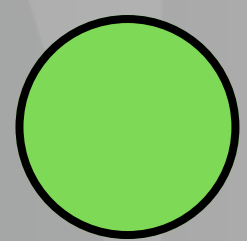
Warm-up area



Player Check-in Table



Entrance to parking



Camping area



Tournament Rules

All PDGA Rules Apply For This Event

Smoking & Alcohol

Alcohol and Cannabis substances are not permitted to be consumed during sanctioned play from 2 minutes before tee time and until the card is submitted. Disqualification may occur as per rule 3.03 C.4 in the PDGA Competition Manual. Smoking is not permitted in the park.

Scoring

Official Scoring Platform is PDGA Live App

Access Code: **KPO2025**

Important: Every player on the card MUST keep score as per PDGA Rule 808. Score keeping can also be completed using UDisc or paper.

KINGS PINE



End of Round Check-In

All players are required to check in with the Tournament Director immediately after completing their round to confirm that their scores have been properly submitted. Failure to do so may result in scorecard penalties or disqualification.

Tie-Breaker Playoff Rules

In the event of a tie, players will throw from Hole 1.

Best score wins the tie-breaker.

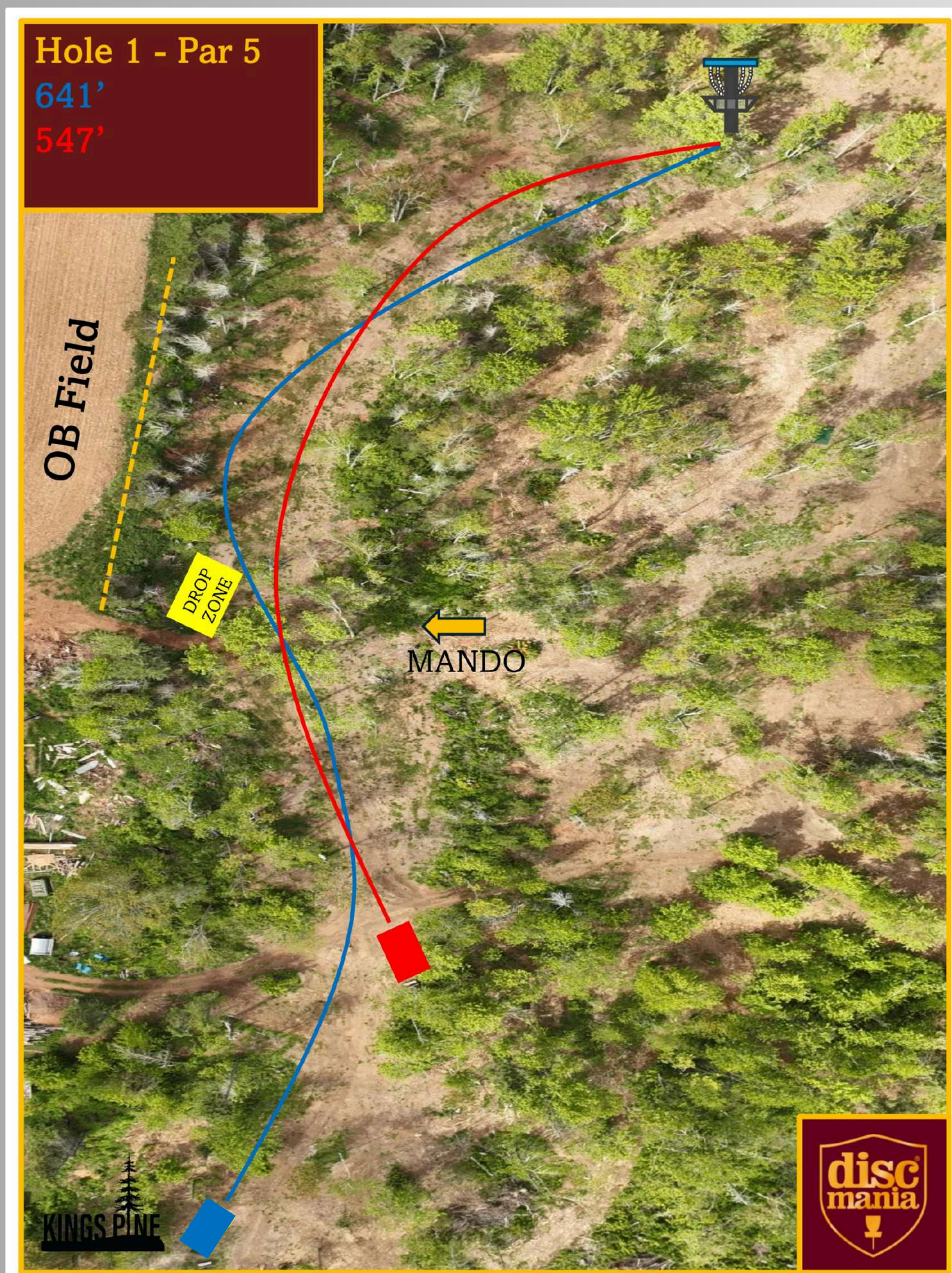
If players tie on Hole 1, they will proceed to Hole 2, 3, 4, 5, 6, and 18 until the tie-breaker is established.

If playoffs involve more than two players, only the players who have the lowest score on the hole will advance to the next hole until a winner is determined.

KINGS PINE



HOLE 1



Blue Tee

Par 5 | 641'

MPO, MP40, MA1

Red Tee

Par 5 | 547'

FPO, FP40, MP50, FA1,
MA40, FA40, MA50, MA2,
FA2, FA3, MJ18

Hole #1 Notes

Field on left side is OB.

Mando in play.

Discs coming to rest past
OB or does not pass on the
left side of the mando,
players must throw from DZ
and receive +1 penalty
throw.



HOLE 2

Blue Tee

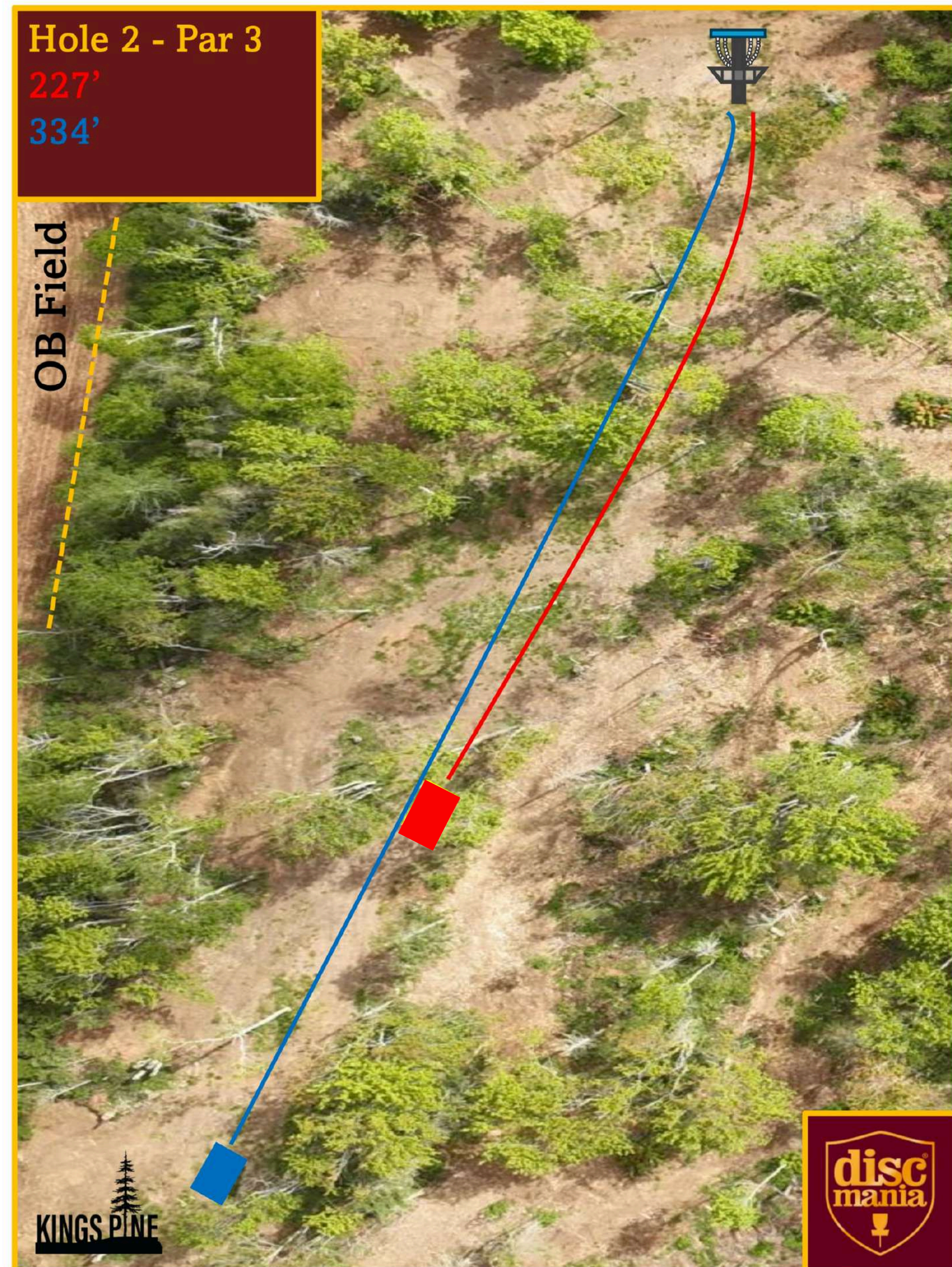
Par 3 | 334'

MPO, FPO, MP40, FP40,
MP50, MA1, FA1, FA40,
MA40

Red Tee

Par 3 | 227'

MA50, MA2, FA2, FA3, MJ18



Hole #2 Notes

Field on left side is OB.
+1 penalty throw for any
discs coming to rest past
OB.

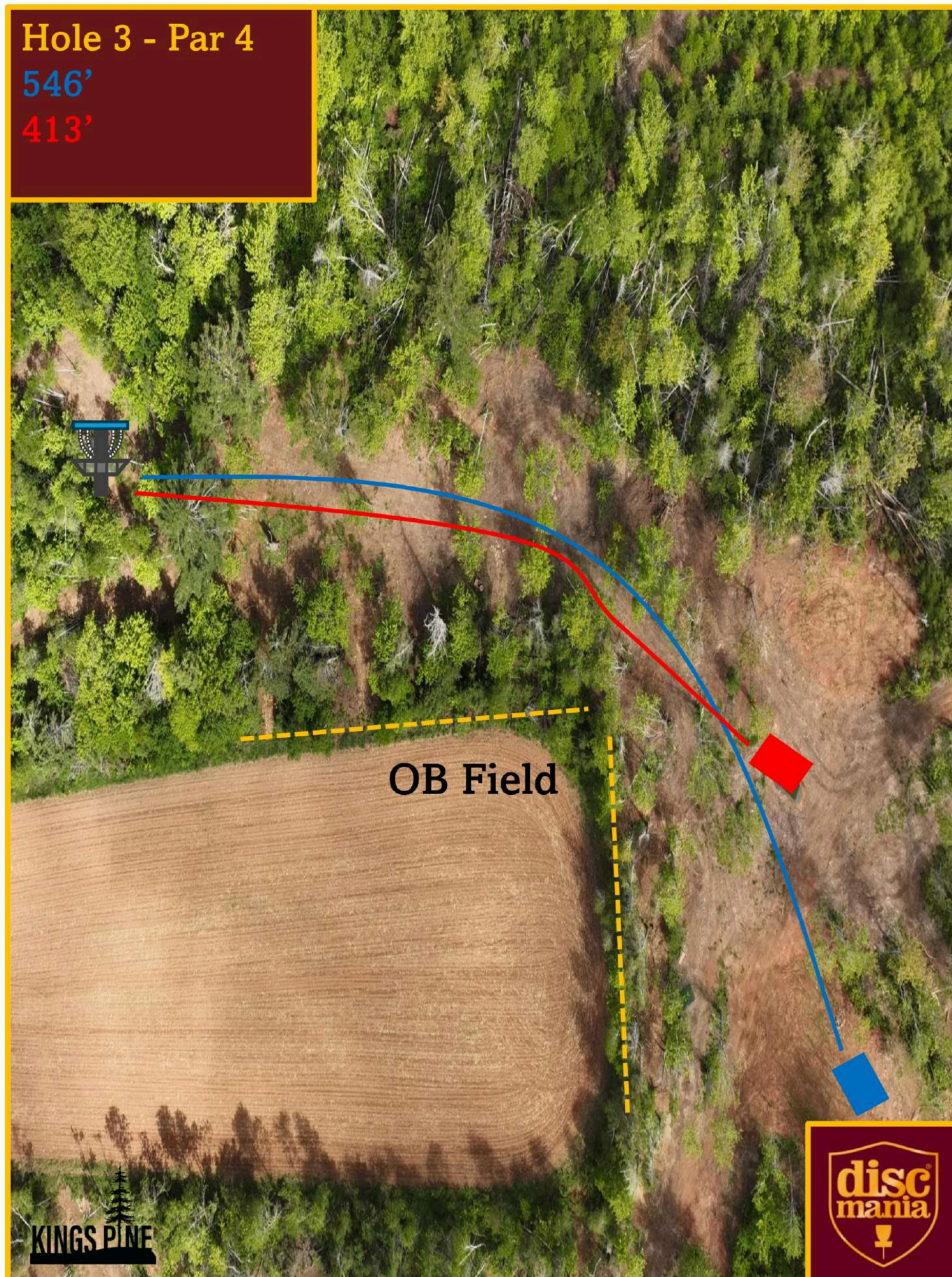


HOLE 3

Hole 3 - Par 4

546'

413'



Blue Tee

Par 4 | 546'

MPO, MP40, MA1

Red Tee

Par 4 | 413'

FPO, FP40, MP50, FA1,
MA40, FA40, MA50, MA2,
FA2, FA3, MJ18

Hole #3 Notes

Field on left side is OB.
+1 penalty throw for any
discs coming to rest past
OB.

KINGS PINE





HOLE 4

Blue Tee

Par 3 | 310'

MPO, MP40, MA1

Blue Tee

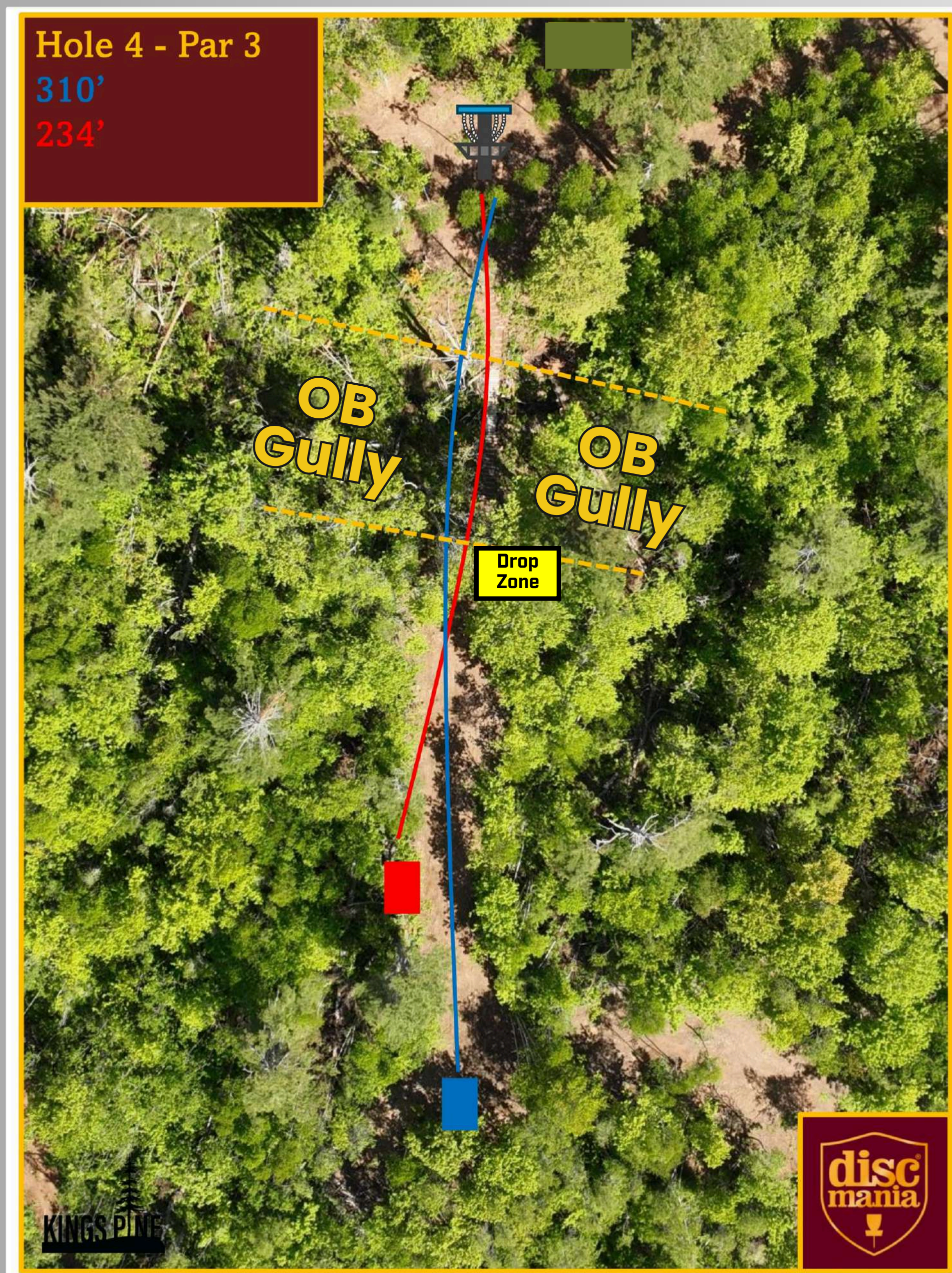
Par 4 | 310'

FPO, FP40, MP50, FA1,
FA40, MA40

Red Tee

Par 3 | 234'

MA50, MA2, FA2, FA3, MJ18



Hole #4 Notes

Gully is OB.

Discs coming to rest inside of the marked area are OB. Players must proceed to the Drop Zone, and receive +1 penalty throw for any discs coming to rest in OB.

Discs that cross the gully and come to rest **in bounds** are considered safe. If the disc subsequently goes out of bounds, the player shall proceed to a lie marked up to 1 meter in from the point where the disc was last in bounds, with a one-throw penalty (PDGA Rule 806.02 Out-of-Bounds).

Par 4 for FPO, FP40, MP50, FA1, FA40, & MA40



HOLE 5

Hole 5 - Par 5
737'
613'



Blue Tee

Par 5 | 737'
MPO, MP40, MA1

Red Tee

Par 5 | 613'
FPO, FP40, MP50, FA1,
MA40, FA40, MA50, MA2,
FA2, FA3, MJ18



KINGS PINE

disc
mania

KINGS PINE



HOLE 6

Blue Tee

Par 4 | 440'

MPO, FPO, MP40, FP40,
MP50, MA1, FA1, FA40,
MA40

Red Tee

Par 4 | 415'

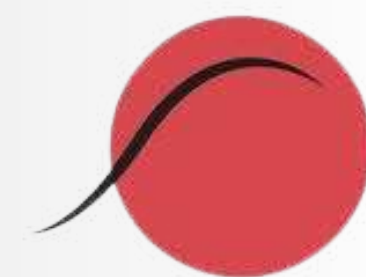
MA50, MA2, FA2, FA3, MJ18

Hole #6 Notes

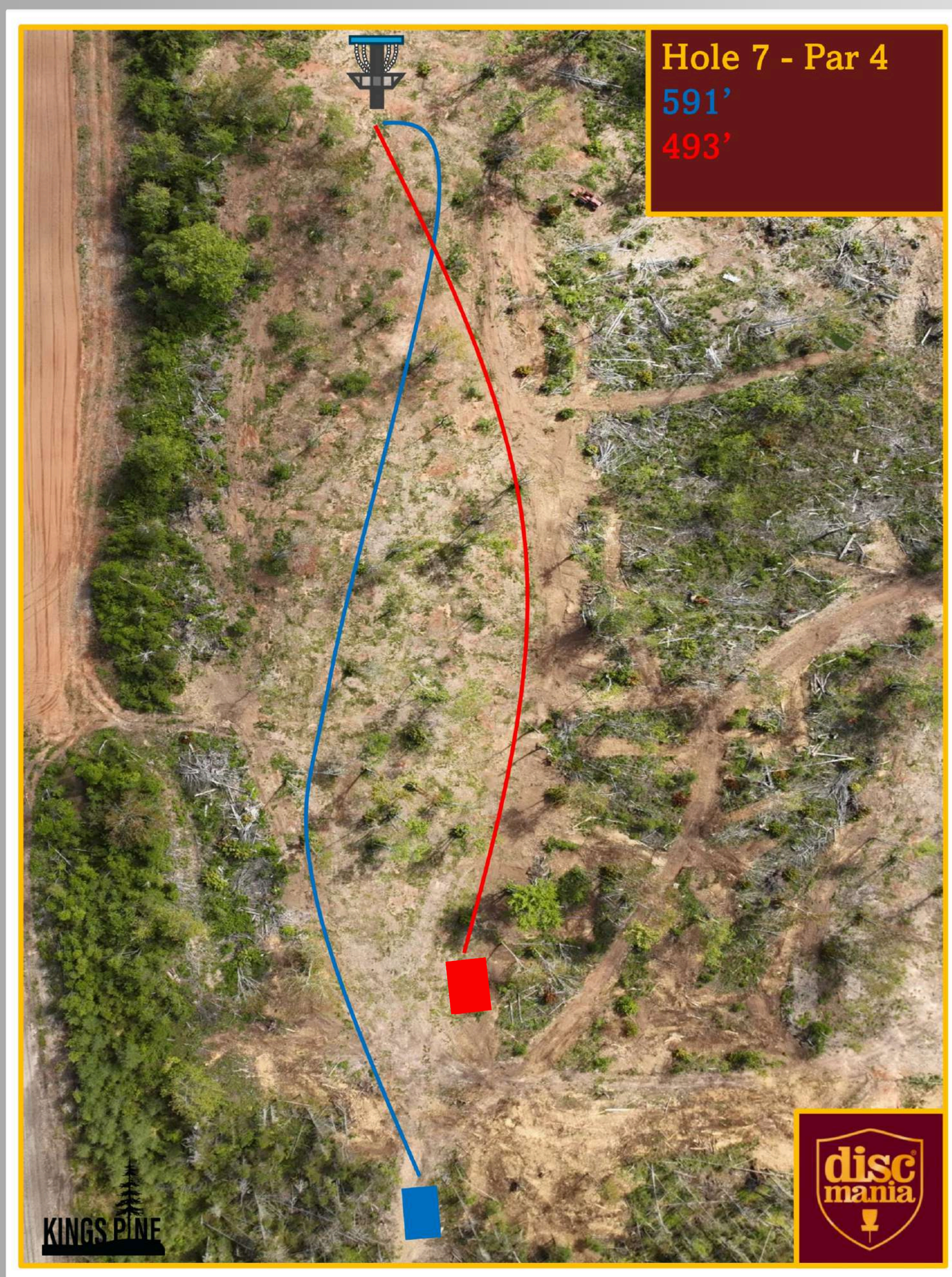
Discs coming to rest and
fully surrounded by water
are OB.

+1 penalty throw for any
discs coming to rest in OB.





HOLE 7



Blue Tee

Par 4 | 591'

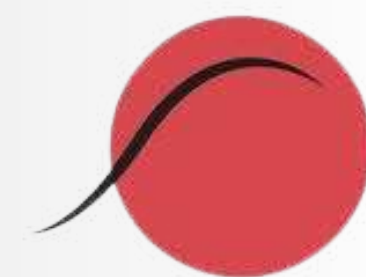
MPO, MP40, MA1

Red Tee

Par 4 | 493'

FPO, FP40, MP50, FA1,
MA40, FA40, MA50, MA2,
FA2, FA3, MJ18

KINGS PINE



HOLE 8



Blue Tee

Par 3 | 325'

MPO, MP40, MA1

Red Tee

Par 3 | 276'

FPO, FP40, MP50, FA1,
MA40, FA40, MA50, MA2,
FA2, FA3, MJ18



KINGS PINE



HOLE 9



Blue Tee

Par 4 | 426'

MPO, FPO, MP40, FP40,
MP50, MA1, FA1, FA40,
MA40

Red Tee

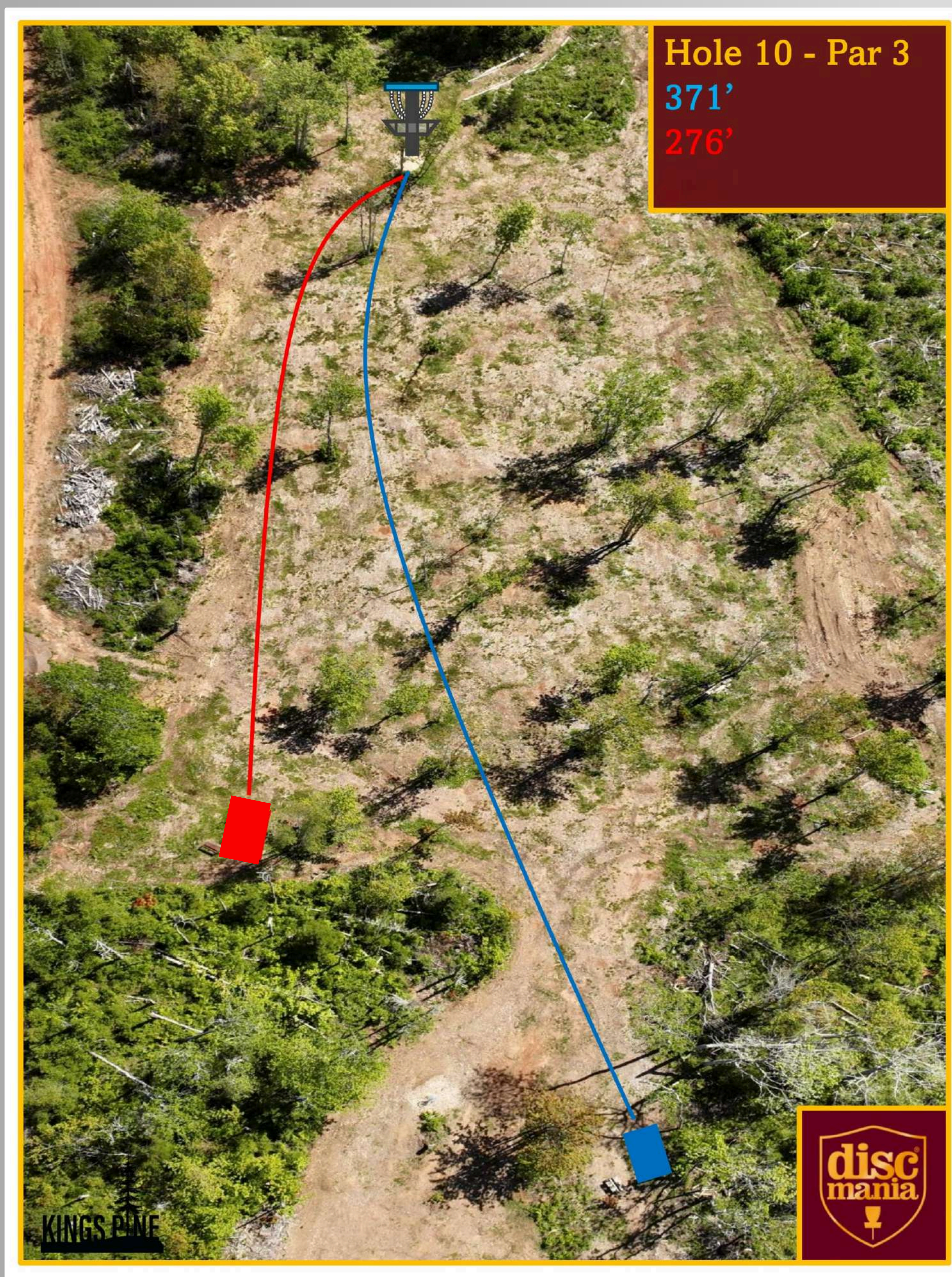
Par 4 | 347'

MA50, MA2, FA2, FA3, MJ18

KINGS PINE



HOLE 10



Hole 10 - Par 3
371'
276'

Blue Tee

Par 3 | 371'

MPO, MP40, MA1

Red Tee

Par 3 | 276'

FPO, FP40, MP50, FA1,
MA40, FA40, MA50, MA2,
FA2, FA3, MJ18



GREENFOOT
ENERGY SOLUTIONS

KINGS PINE



HOLE 11

Hole 11 - Par 3
411'
286'



Blue Tee

Par 3 | 411'

MPO, MP40, MA1

Red Tee

Par 3 | 286'

FPO, FP40, MP50, FA1,
MA40, FA40, MA50, MA2,
FA2, FA3, MJ18

Hole #11 Notes

Road on left side is OB.
+1 penalty throw for any
discs coming to rest past
OB.

KINGS PINE



HOLE 12

Gold Tee

Par 4 | 617'
MPO, MP40, MA1

Blue Tee

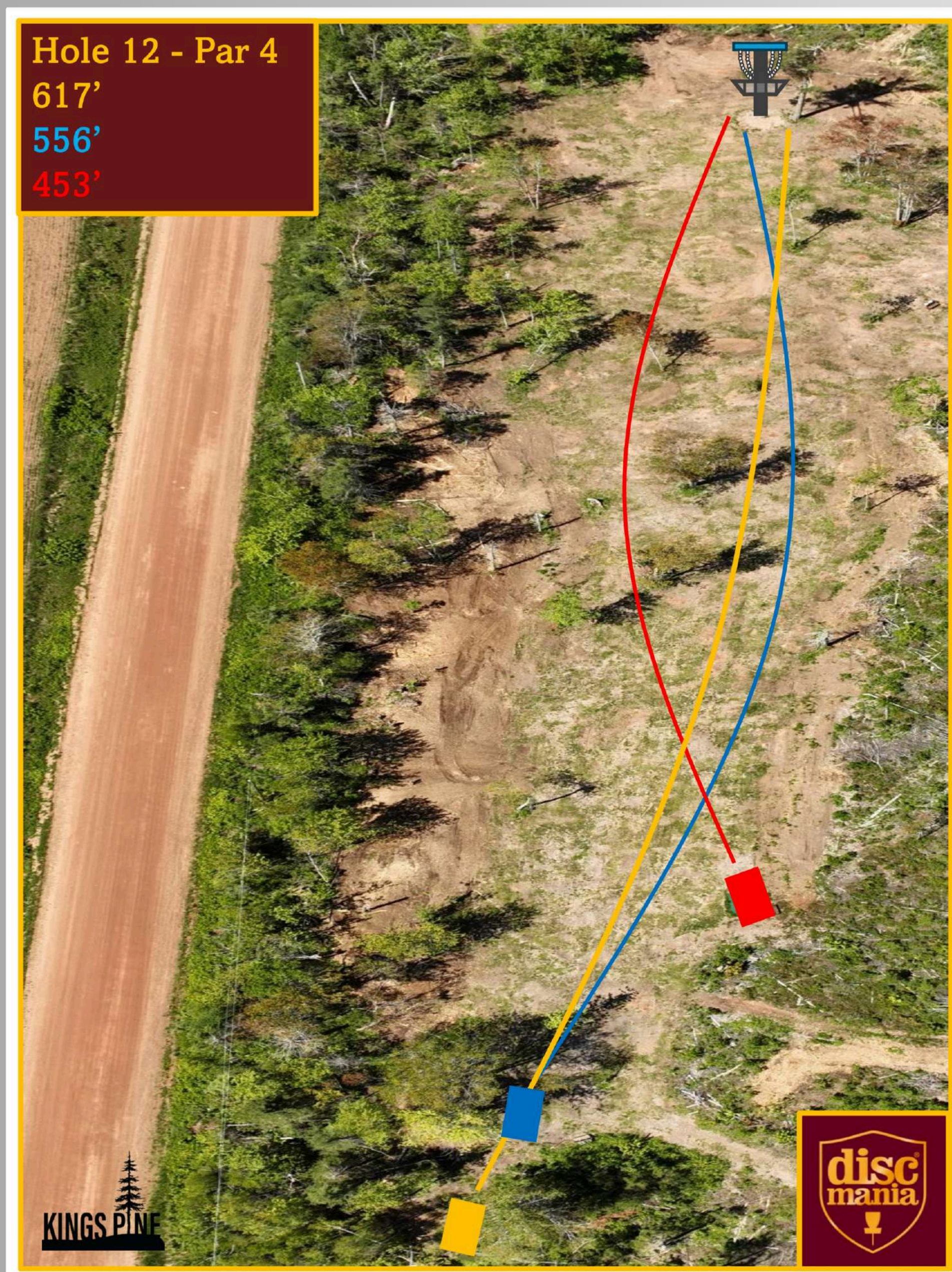
Par 4 | 556'
FPO, FP40, MP50, FA1,
FA40, MA40

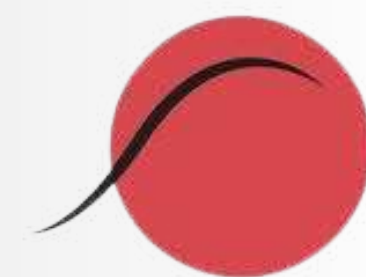
Red Tee

Par 4 | 453'
MA50, MA2, FA2, FA3, MJ18

Hole #12 Notes

Road on left side is OB.
+1 penalty throw for any
discs coming to rest past
OB.





HOLE 13

Blue Tee

Par 3 | 278'

MPO, FPO, MP40, FP40,
MP50, MA1, FA1, FA40,
MA40

Red Tee

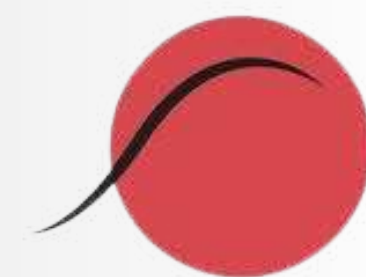
Par 3 | 215'

MA50, MA2, FA2, FA3, MJ18




EXPRESS
IMAGING

KINGS PINE



HOLE 14

Blue Tee To Long Basket

Par 4 | 587'

MPO, MP40, MA1

Blue Tee To SHORT Basket

Par 4 | 446'

FPO, FP40, MP50, FA1,
FA40, MA40

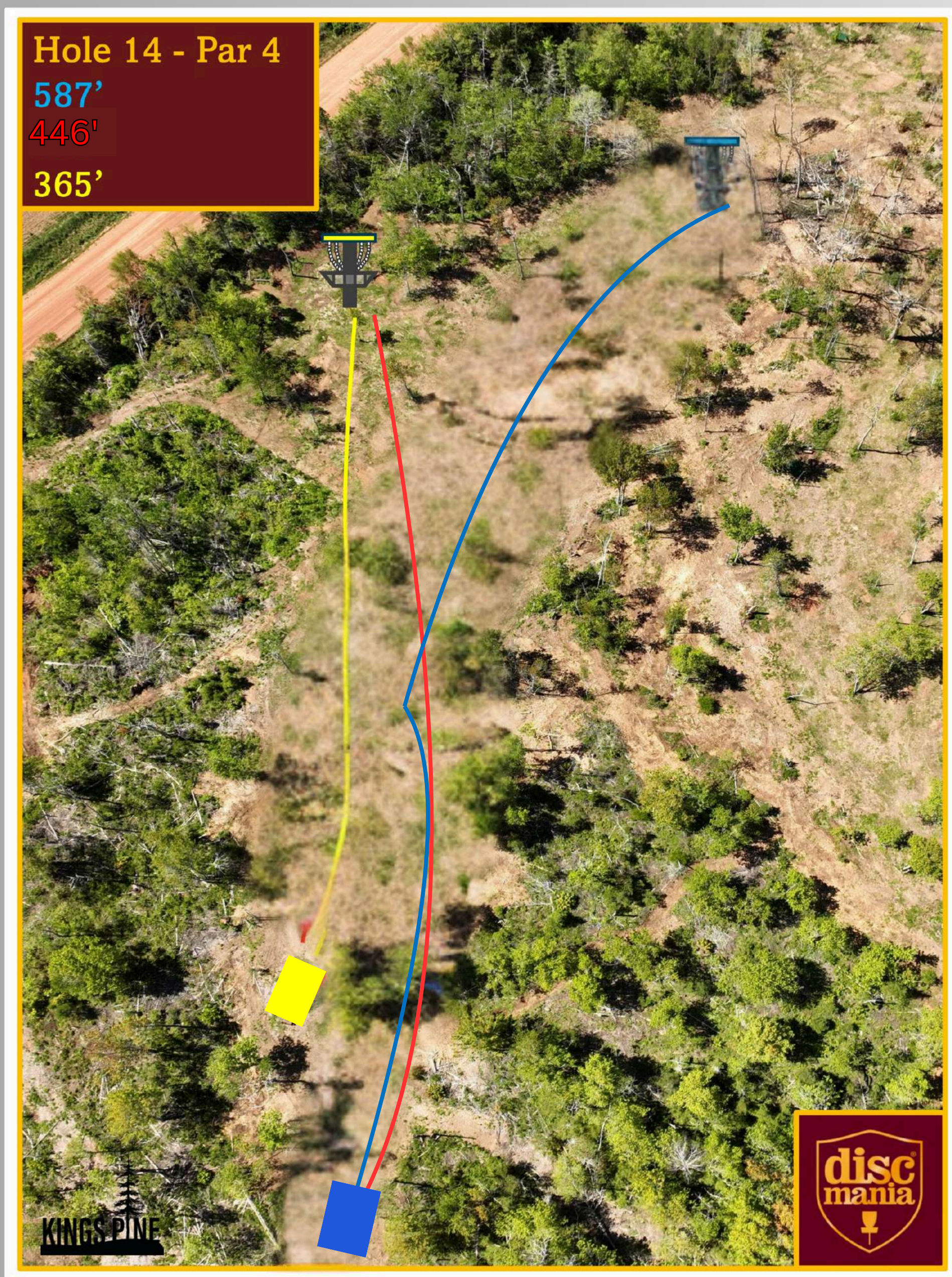
Yellow Tee To Short Basket

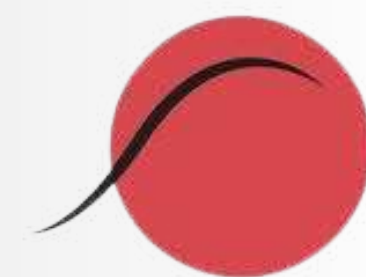
Par 4 | 365'

MA50, MA2, FA2, FA3, MJ18

Hole #14 Notes

FPO, FP40, MP50, FA1, FA40,
MA40 throw from Long Tee
to Yellow (short) Basket
(Par4 | 446')





HOLE 15

Blue Tee

Par 4 | 540'
MPO, MP40, MA1

Red Tee

Par 4 | 457'
FPO, FP40, MP50, FA1,
MA40, FA40, MA50, MA2,
FA2, FA3, MJ18





HOLE 16

Blue Tee

Par 5 | 869'

MPO, MP40, MA1

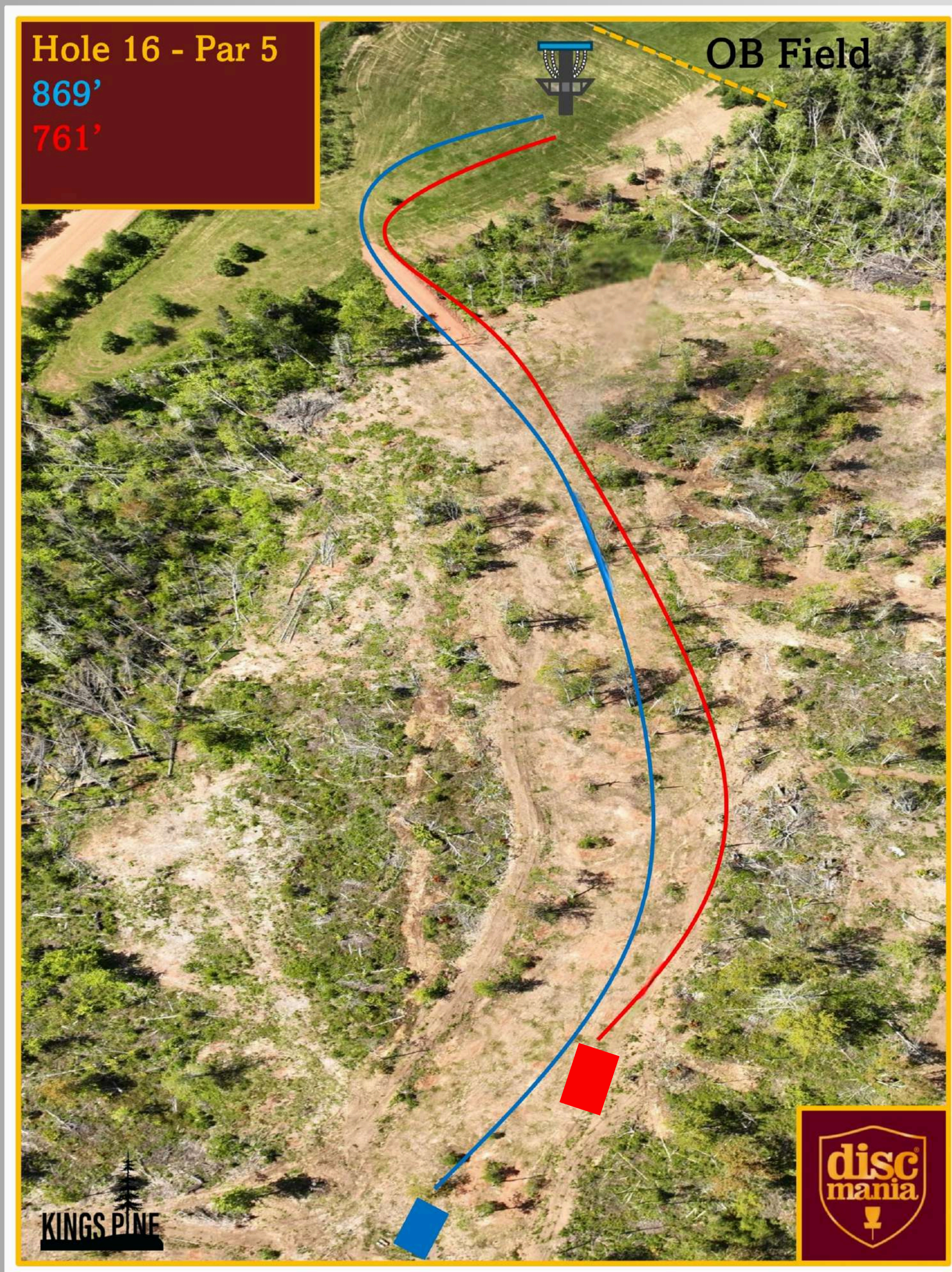
Red Tee

Par 5 | 761'

FPO, FP40, MP50, FA1,
MA40, FA40, MA50, MA2,
FA2, FA3, MJ18

Hole #16 Notes

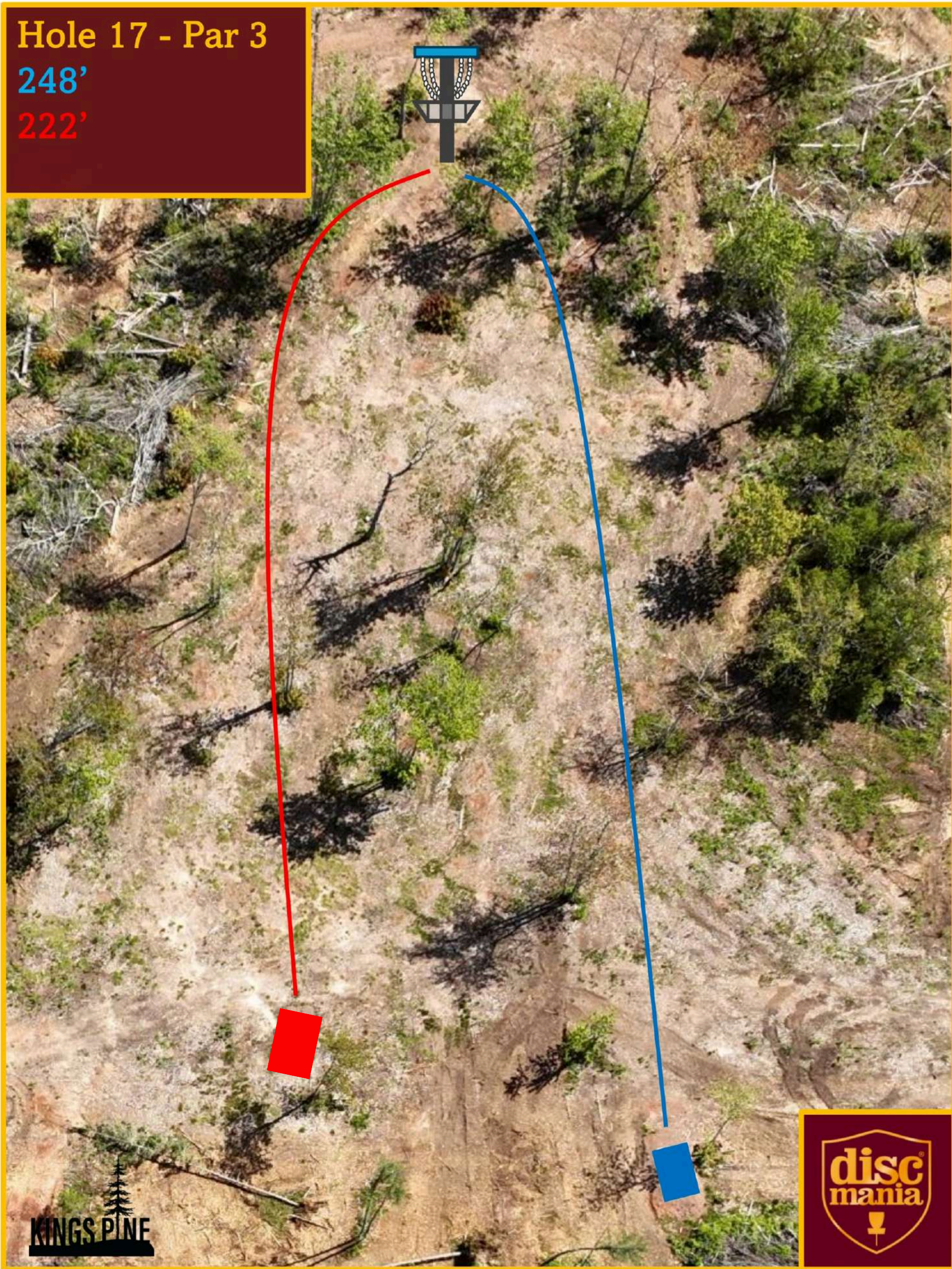
Field beyond basket is OB.
+1 penalty throw for any
discs coming to rest past
OB.





HOLE 17

Hole 17 - Par 3
248'
222'



Blue Tee

Par 3 | 248'

MPO, FPO, MP40, FP40,
MP50, MA1, FA1, FA40,
MA40

Red Tee

Par 3 | 222'

MA50, MA2, FA2, FA3, MJ18

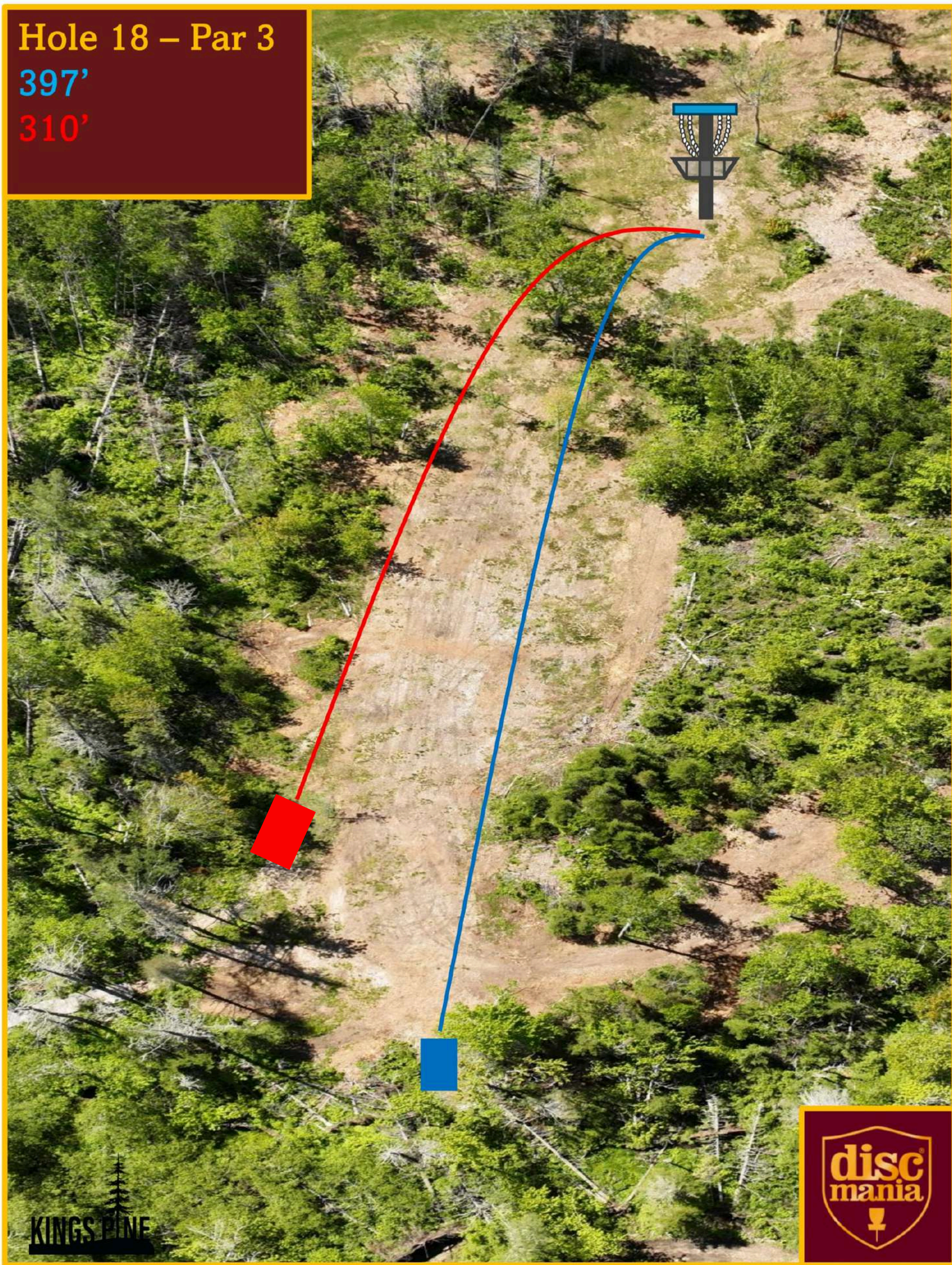
THE
HANDPIE
PEI CAN
COMPANY

KINGS PINE



HOLE 18

Hole 18 – Par 3
397'
310'



Blue Tee

Par 3 | 397'
MPO, MP40, MA1

Blue Tee

Par 4 | 397'
FPO, FP40, MP50, FA1,
FA40, MA40

Red Tee

Par 3 | 310'
MA50, MA2, FA2, FA3, MJ18

KINGS PINE

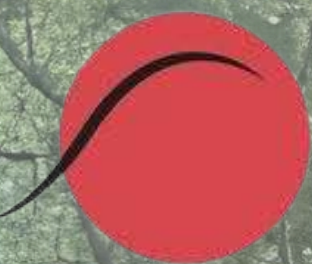


COURSE LAYOUT SUMMARY

Hole	MPO, MP40, MA1			FPO, FP40, MP50, FA1, MA40, FA40			MA50, MA2, FA2, FA3, MJ18		
	Par	Tee	Length	Par	Tee	Length	Par	Tee	Length
1	5	Blue	641	5	Red	547	5	Red	547
2	3	Blue	334	3	Blue	334	3	Red	227
3	4	Blue	546	4	Red	413	4	Red	413
4	3	Blue	310	4	Blue	310	3	Red	234
5	5	Blue	737	5	Red	613	5	Red	613
6	4	Blue	440	4	Blue	440	4	Red	415
7	4	Blue	591	4	Red	493	4	Red	493
8	3	Blue	325	3	Red	276	3	Red	276
9	4	Blue	426	4	Blue	426	4	Red	347
10	3	Blue	371	3	Red	276	3	Red	276
11	3	Blue	411	3	Red	286	3	Red	286
12	4	Gold	617	4	Blue	556	4	Red	453
13	3	Blue	278	3	Blue	278	3	Red	215
14	4	Blue	587	4	Blue	446	4	Yellow	365
15	4	Blue	540	4	Red	457	4	Red	457
16	5	Blue	869	5	Red	761	5	Red	761
17	3	Blue	248	3	Blue	248	3	Red	222
18	3	Blue	397	4	Blue	397	3	Red	310
	67		8668	69		7557	67		6910

Hole	Notes	Hole	Notes
1	Field on left side is OB. Mando in play. Discs coming to rest past OB or does not pass on the left side of the mando, players must throw from DZ and receive +1 penalty throw.	10	
2	Field on left side is OB. +1 penalty throw for any discs coming to rest past OB.	11	Road on left side is OB. +1 penalty throw for any discs coming to rest past OB.
3	Field on left side is OB. +1 penalty throw for any discs coming to rest past OB.	12	Road on left side is OB. +1 penalty throw for any discs coming to rest past OB.
4	Gully is OB. Discs coming to rest inside of the marked area are OB. Players must proceed to the Drop Zone, and receive +1 penalty throw for any discs coming to rest in OB. Discs that cross the gully and come to rest in bounds are considered safe. If the disc subsequently goes out of bounds, the player shall proceed to a lie marked up to 1 meter in from the point where the disc was last in bounds, with a one-throw penalty (PDGA Rule 806.02 Out-of-Bounds). Par 4 for FPO, FP40, MP50, FA1, FA40, & MA40	13	
5		14	FPO, FP40, MP50, FA1, FA40, MA40 throw from Long Tee to Yellow (short) Basket. MA50, MA2, FA2, FA3, MJ18 throw from Yellow Tee to Yellow (Short) Basket.
6	Discs coming to rest and fully surrounded by water are OB. +1 penalty throw for any discs coming to rest in OB.	15	
7		16	Field beyond basket is OB. +1 penalty throw for any discs coming to rest past OB.
8		17	
9		18	Par 4 for FPO, FP40, MP50, FA1, FA40, & MA40

Pro Tip: Screenshot this page on your cell phone for easy reference during the tournament.



Thank You

KINGS PINE

Caddie Book Designed
by
Rick Robichaud
PDGA# 174447