

1

2025

KING OF THE LAKE
DRAGON

DISTANCE

PAR

DOG
HOLE

436' 4

HOLE NOTES

- Course hole #1 tee to course hole #2 B Pin
- Mandos right of tree and dog park fence corner. If missed, proceed to Drop
- Pavement and Beyond OB
- Gazebo/Ramp OB
- Dog Park
- Fence Right of Hole 9 OB
- Next tee is course hole #4

ROUND 5

DRAGON LAYOUT CADDY BOOK

Caddy Book designed by



1

KING OF THE LAKE
DRAGON

DISTANCE

PAR

436'

4

HOLE NOTES

- Course hole #1 tee to course hole #2 B Pin
- Stay right of Mando
If missed, proceed to Drop Zone
- Pavement and Beyond OB
- Gazebo/Ramp OB
- Dog Park OB
- Fence Right of Hole 9 OB
- Next tee is course hole #4

Caddy Book designed by



2

KING OF THE LAKE
DRAGON

DISTANCE

PAR

594'

4

HOLE NOTES

- Normal course hole #4 to E Pin
- Pavement and beyond OB
- Fence OB
- Next tee is course hole #5

Caddy Book designed by



3

KING OF THE LAKE
DRAGON

DISTANCE

PAR

495'

4

HOLE NOTES

- Normal course hole #5 to D Pin
- Fences OB
- Right Side Pavement and Beyond OB
- Next tee is course hole #6

Caddy Book designed by



4

KING OF THE LAKE DRAGON

DISTANCE

PAR

497'

4

HOLE NOTES

- Course hole #6 tee to course hole #7 B Pin
- Pavement and beyond OB
- Gazebo/Ramp OB
- Next tee is course hole #8

Caddy Book designed by



5

KING OF THE LAKE
DRAGON

DISTANCE

PAR

667'

4

HOLE NOTES

- Course hole #8 tee to course hole #9 B Pin
- Fence and Beyond OB
- Gazebo/Ramp OB
- Pavement and beyond OB
- Next tee is course hole #10

Caddy Book designed by



6

KING OF THE LAKE
DRAGON

DISTANCE

PAR

732'

4

HOLE NOTES

- Course hole #10 tee to
course hole #11 D Pin
- Stay left of Mando
If missed, proceed to Drop Zone
- Fence and beyond OB
- Next tee is course hole #12
ALT tee pad

Caddy Book designed by



7

KING OF THE LAKE
DRAGON

DISTANCE

PAR

617'

4

HOLE NOTES

- Course hole #12 ALT tee to course hole #13 A Pin
- Next tee is course hole #14

Caddy Book designed by



8

KING OF THE LAKE
DRAGON

DISTANCE

PAR

513'

4

HOLE NOTES

- Mando right of tree
If missed, proceed to Drop Zone
- Next tee is course hole #15

Caddy Book designed by



9

KING OF THE LAKE
DRAGON

DISTANCE

PAR

276'

3

HOLE NOTES

- *Island Green*
Outside island plays as hazard.
Throw from lie with 1 stroke penalty.
- *Next tee is course hole #16*

Caddy Book designed by



10

KING OF THE LAKE DRAGON

DISTANCE

PAR

588'

4

HOLE NOTES

- Normal course hole #16 to F Pin
- Stay left of both Mandos
If missed, proceed to Drop Zones
- Next tee is course hole #17

Caddy Book designed by



11

KING OF THE LAKE
DRAGON

DISTANCE

PAR

491'

4

HOLE NOTES

- Normal course hole #17 to C Pin
- Stay right of Mando
If missed, proceed to Drop Zone
- Next tee is course hole #18

Caddy Book designed by



12

KING OF THE LAKE
DRAGON

DISTANCE

PAR

562'

4

HOLE NOTES

- Normal course hole #18 to E Pin
- Next tee is course hole #19

Caddy Book designed by



13

KING OF THE LAKE
DRAGON

DISTANCE

PAR

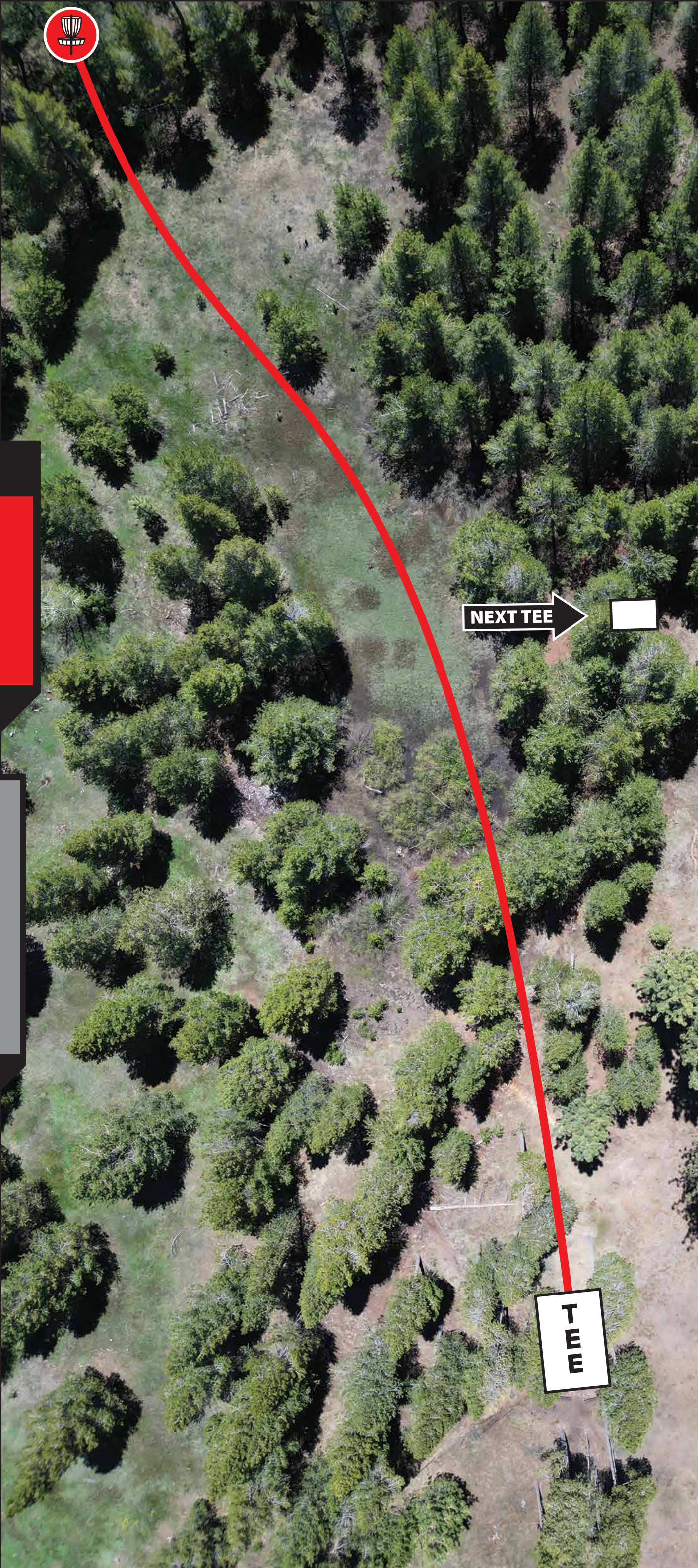
503'

4

HOLE NOTES

- Course hole #19 tee to
course hole #22 old D Pin
- Path and beyond OB
- Next tee is course hole #20

Caddy Book designed by



14

KING OF THE LAKE
DRAGON

DISTANCE

PAR

414'

3

HOLE NOTES

- Initial tunnel plays as Hazard Throw from lie with 1 stroke penalty
- Fence and beyond OB
- Next tee is course hole #21

Caddy Book designed by



15

KING OF THE LAKE DRAGON

DISTANCE

PAR

598'

4

HOLE NOTES

- Course hole #21 tee to course hole #22 A Pin
- Mando right of tree
If missed, proceed to Drop Zone
- Path and beyond OB
- Next tee is course hole #23

Caddy Book designed by



16

KING OF THE LAKE DRAGON

DISTANCE

PAR

247'

3

HOLE NOTES

- *Stay right of Mando*
If missed, proceed to Drop Zone
- *Bike Park trail and Beyond OB*
- *Island Green*
Outside island plays as hazard.
Throw from lie with 1 stroke penalty.
- *Next tee is course hole #24*

Caddy Book designed by



17

KING OF THE LAKE DRAGON

DISTANCE

PAR

761'

4

HOLE NOTES

- Course hole #24 tee to course hole #25 Pin D
- Next tee is course hole #27

Caddy Book designed by



18

KING OF THE LAKE
DRAGON

DISTANCE

PAR

405'

3

HOLE NOTES

- *Double Mando*
If missed, proceed to Drop Zone
- *Gazebo and pavement OB*
- *Parking Lot OB*

Caddy Book designed by

