

Lamirada Open 2025

is made possible with help from our 2025 California Disc Golf Series Sponsors:

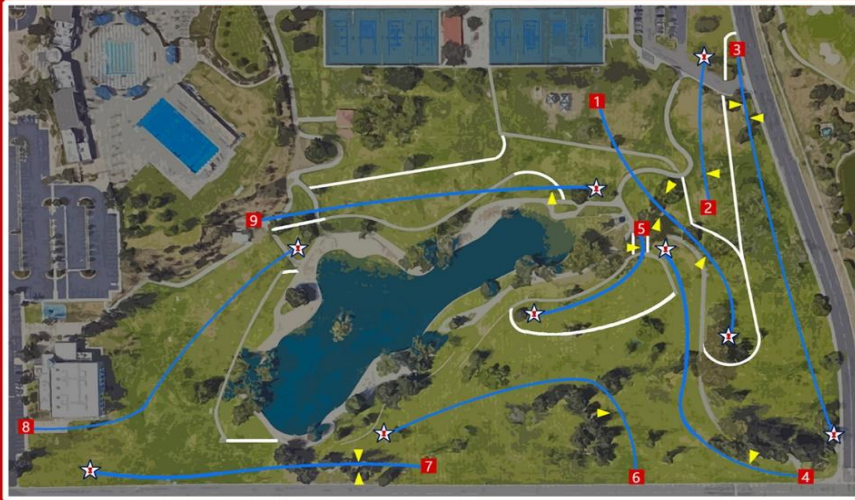


MAKE MEDIA STUDIOS

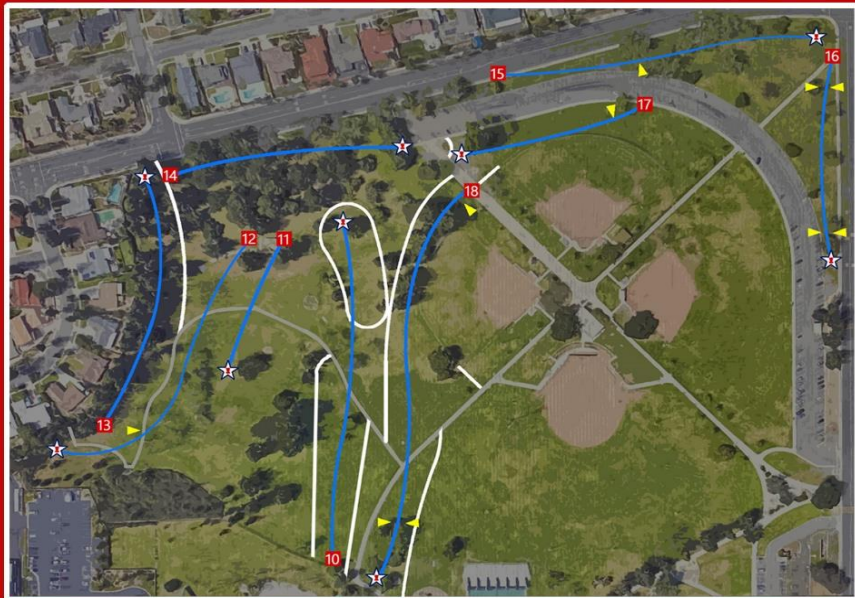
CHAOTIC
COLORS



Front 9



Back 9



La Mirada Regional Park

Scoring will be taken on [PDGA.COM/SCORE](https://pdga.com/score)
Event Passcode: **LMO25**

Note 1: Two meter rule is IN PLAY

Note 2: All physical OB lines will be considered OB, if your disc comes to rest fully in the OB area and is touching the line it is still OB unless any part of it is touching inbounds.

Note 3: Discs coming to rest on tee pads that are within the holes inbounds fairway are NOT OB.

Note 4: Please be mindful and courteous of all park guests and other players.

Note 5: HAVE FUN! This is a difficult layout but dont let it get the best of you.

Any questions or concerns, please contact:

Ryan Reilly - Tournament Director
(562) 397-7731

Matthew Hernandez - Assistant TD
(562) 587-4014

Andrew Salazar - CDGS Director
(562) 447-9525

Californiadiscgolfseries@gmail.com
https://www.discgolfscore.com/tournaments/La_Mirada_Open_2025



Tee is located at the normal La Mirada lakeside course hole 2 tee pad

Marked OB lines and beyond are OB

Gutter and beyond is OB

All sidewalks and beyond are OB.

(The sidewalk dividing the fairway plays as a river and is OB if your disc comes to rest on it)

Discs coming to rest OB will be brought inbounds 1 meter from where they crossed OB with a 1 stroke penalty.

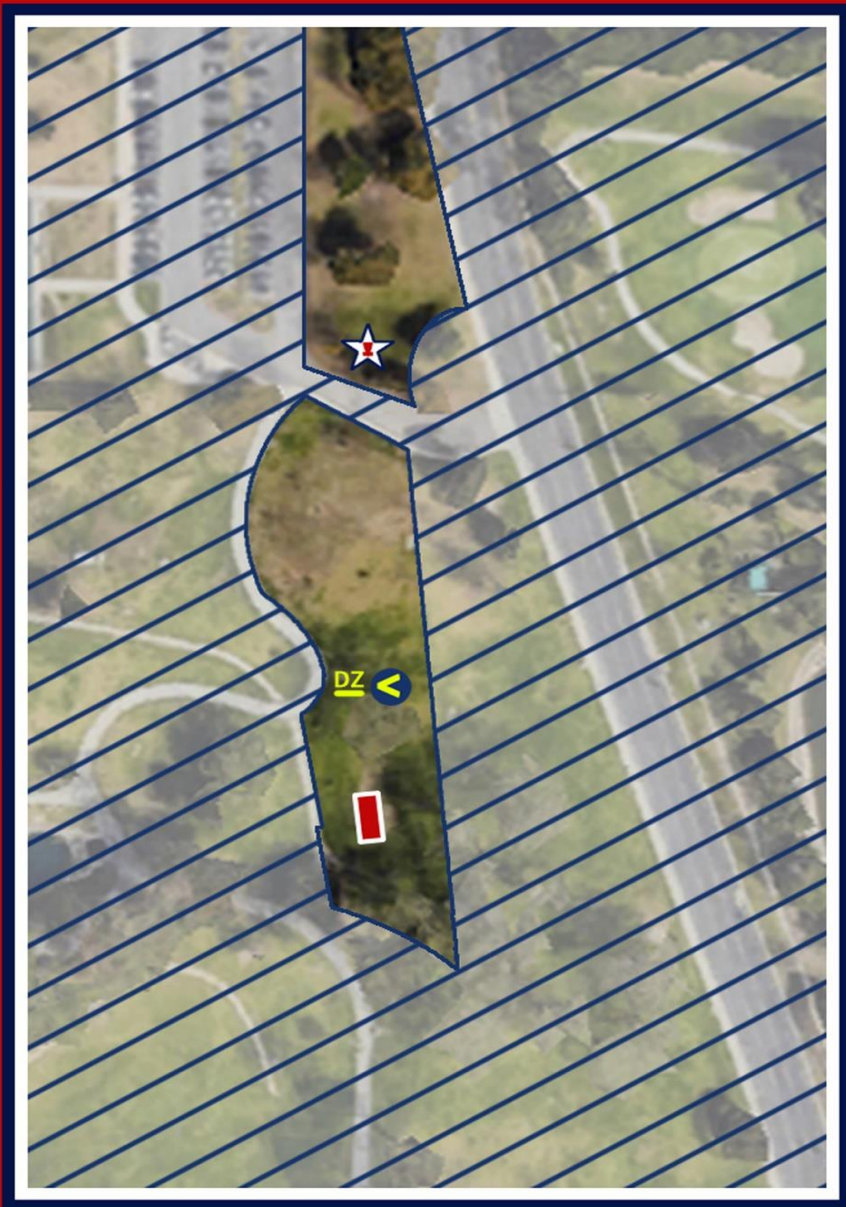
Throws must pass between the first two marked mando trees

If either mando is missed, proceed to the marked drop zone between the trees with a 1 stroke penalty

Throws must then pass on the left side of the marked mando pole

If that mando is missed, proceed to the marked drop zone near that pole with a 1 stroke penalty





Tee is located at the normal La Mirada lakeside course hole 3 tee pad

All sidewalks and beyond are OB.

Gutter and beyond is OB

Marked OB lines and beyond are OB

**Driveway and sidewalk dividing the fairway
and the island green and are OB**

**The island green is safe up to the marked OB
line on the right side near hole 3s tee pad.**

**Discs coming to rest OB will be brought
inbounds 1 meter from where they crossed OB
with a 1 stroke penalty.**

**Throws must pass on the left side of the marked mando tree
If the mando is missed, proceed to the marked
drop zone with a 1 stroke penalty**





Tee pad located about 100 ft behind the normal La Mirada lakeside course hole 4 tee pad on the grass island

Marked OB lines and beyond are OB.

All sidewalks and beyond are OB.

Driveway and sidewalk directly in front of the tee pad between the island and fairway are OB

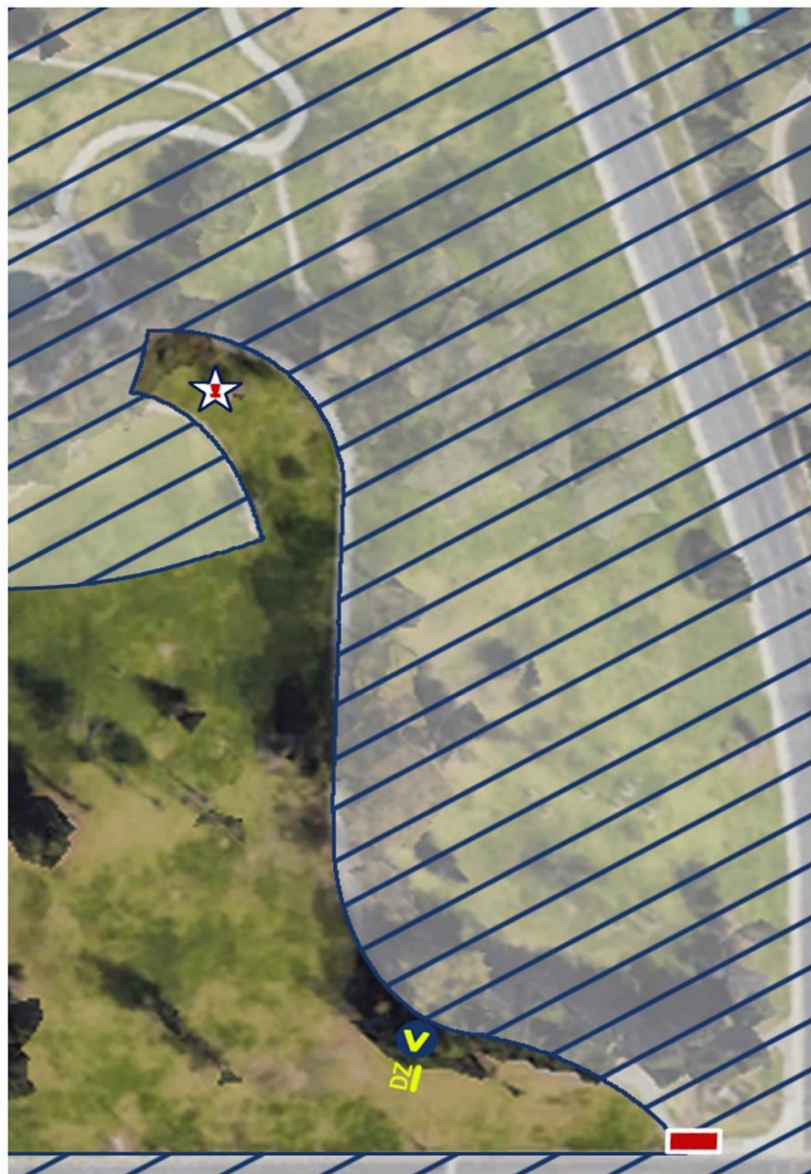
Discs coming to rest OB will be brought inbounds 1 meter from where they crossed OB with a 1 stroke penalty.

Throws must pass between the set of double mando trees

If either mando is missed, proceed to the marked drop zone with a 1 stroke penalty (normal hole 4 tee pad)

If your disc comes to rest on the drop zone tee pad or any other tee pads surrounded by in-bounds area it is NOT OB (regular hole 4, 5, and 6 tee pads).





HOLE #4



**PAR 4
680 FT.**

Tee is the normal La Mirada lakeside course hole 7 sidewalk tee pad

All sidewalks and beyond are OB.

Streets / curb and beyond are OB.

Marked fairway OB lines and beyond up to the gutter are OB.

Marked OB line and beyond left of the basket is OB.

Discs coming to rest OB will be brought inbounds 1 meter from where they crossed OB with a 1 stroke penalty.

Throws must pass on the left of the marked single mandatory tree

If the mando is missed, proceed to the marked drop zone with a 1 stroke penalty

If your disc comes to rest on any other tee pads surrounded by the in-bounds area it is NOT OB (normal lakeside hole 8 or hole 9 tee pad).





Tee pad is the normal La Mirada lakeside course hole 10 sidewalk tee pad.

Throws must cross left of the marked mando tree
If the mando is missed, proceed to the marked drop zone with a 1 stroke penalty

Gutters and beyond back toward the tee pad and lake are OB
Marked OB lines and beyond are OB.

Discs coming to rest OB will be brought inbounds 1 meter from where
they crossed OB with a 1 stroke penalty.

Tee shots that never cross over the gutter will be next played
from the marked drop zone with a 1 stroke penalty

After finishing this hole, proceed up the hill left of the basket
Be aware of cards throwing ahead of you and stay to the right near the tree line





Tee is normal La Mirada lakeside course hole 8 tee pad,

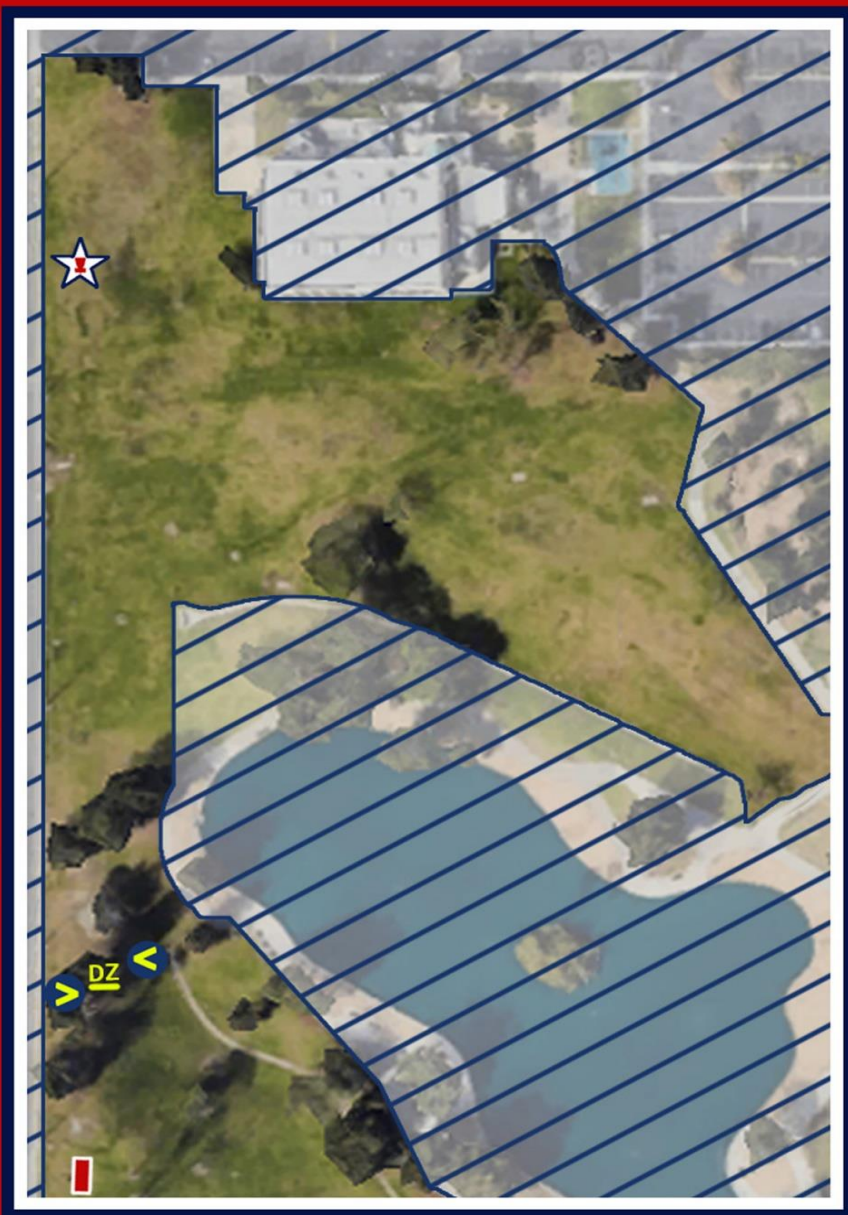
All sidewalks and beyond are OB.
Street / curb and beyond are OB.
Marked OB lines and beyond are OB
The gutters are NOT OB on this hole

Discs coming to rest OB will be brought inbounds 1 meter
from where they crossed OB with a 1 stroke penalty.

Discs must pass on the right side of the marked mando tree
If the mando is missed, proceed to the marked
drop zone with a 1 stroke penalty.

If your disc comes to rest on any other tee pads surrounded by the
inbounds area, it is NOT OB (regular hole 9, 12 & 13 tee pads).





The tee is normal La Mirada lakeside course hole 13 tee pad.

Disc must travel between both mandatories.
If either mando is missed, proceed to the marked drop zone with a 1 stroke penalty

All sidewalks and beyond are OB,

Street / curb and beyond are OB.

Marked OB lines and beyond to the drain / gutter are OB.

Gutter than ends right of the tee pad and mandos is NOT OB.

Discs coming to rest OB will be brought
inbounds 1 meter from where they crossed OB
with a 1 stroke penalty.





The tee is located at the back corner of the gym

All Cement/sidewalks around the gym and the roof of the gym are OB.

All other sidewalks and beyond are OB.

Sidewalk that passes through the fairway and the putting green plays as a river and is OB

Gutter and marked OB lines and beyond are OB.

Discs coming to rest OB will be brought inbounds 1 meter from where they crossed OB with a 1 stroke penalty.

Discs never crossing inbounds over grass will be a re-tee.





Tee is located on the sidewalk near the restroom
It is the long alt. tee position for regular La Mirada
lakeside coursehole 17
(Now is a good time for a bathroom pit stop).

The sidewalks that pass through the fairway are both OB
if your disc comes to rest on it.

All marked OB lines and beyond are OB.

All gutters and beyond are OB.

Discs coming to rest OB will be brought
inbounds 1 meter from where they crossed OB
with a 1 stroke penalty.

Re-tee if your disc never crosses the inbounds grass area.

Single left mandatory at the light pole just before the basket
If mando is missed, proceed to the marked drop zone
with a 1 stroke penalty.





HOLE #10



**PAR 4
705 FT.**

Tee is normal La Mirada backside course hole 1 tee pad.

All sidewalks and beyond are OB.

Marked OB lines and beyond are OB

Gutter and beyond is OB up to the marked island.

Discs coming to rest within the marked island area are safe.

**Discs coming to rest OB will be brought
inbounds 1 meter from where they last crossed OB
with a 1 stroke penalty.**





HOLE #11



**PAR 3
300 FT.**

Tee is located to the side of the out of service restroom.

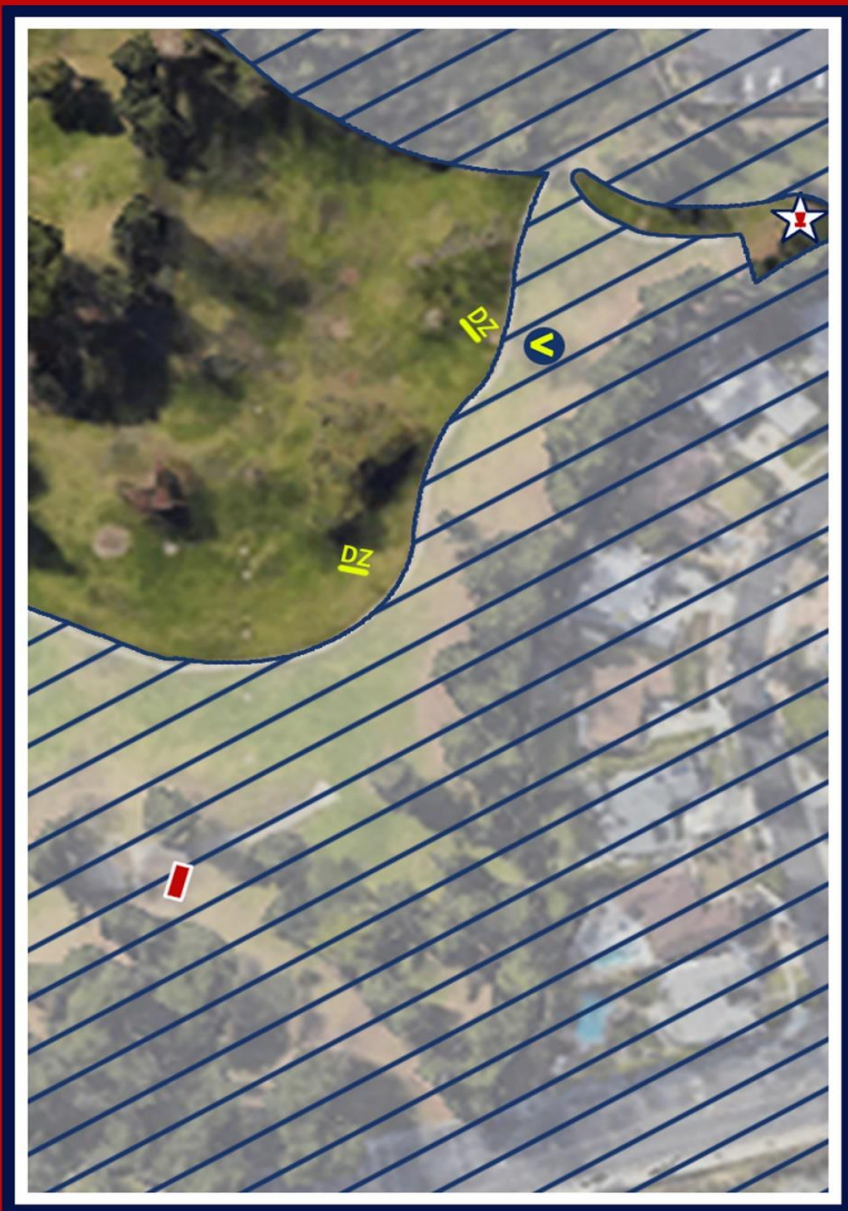
**If you land on top of the restroom or on any cement
around the restroom you are OB.**

Marked OB line and beyond on the right side of the fairway are OB

**Discs coming to rest OB will be brought
inbounds 1 meter from where they crossed OB
with a 1 stroke penalty.**

**Discs coming to rest in the gutter or short of the gutter
up to the OB line will play as HAZARD.
Play your next shot from where your disc came to rest
with a 1 stroke penalty.**





HOLE #12



**PAR 4
655 FT.**

**Tee is located at the normal La Mirada
backside course hole 4 tee pad.**

The gutter and beyond short and right is OB.

**Any disc thrown off the tee pad that
comes to rest out of bounds
will advance to the first marked drop zone
with a 1 stroke penalty.**

**Discs coming to rest OB after your tee shot
will be brought inbounds 1 meter from where
they crossed OB with a 1 stroke penalty.**

Curb / planters and beyond are OB

**All shots must also stay left of the marked mando tree
that is down the fairway in the OB area.
If the mando is missed, proceed to the second marked
drop zone with a 1 stroke penalty**

**The green is shaped by 4 things:
a gutter, a line of bricks, a cement curb and a wall.
Anything not within those boundaries is OB.
(Please see the hole map for clarification)**





HOLE #13



**PAR 4
515 FT.**

Tee is normal La Mirada backside course hole 5 tee pad.

**All gutters and beyond are OB
Marked OB lines and beyond are OB
Beyond the fences/walls are OB
All sidewalks and beyond are OB.**

**Discs coming to rest OB will be brought
inbounds 1 meter from where they crossed OB
with a 1 stroke penalty.**

**If your disc comes to rest on any other
tee pads surrounded by the in-bounds area it
is NOT OB.**





HOLE #14



**PAR 4
500 FT.**

Tee is normal La Mirada backside course hole 7 tee pad.

All sidewalks and beyond are OB

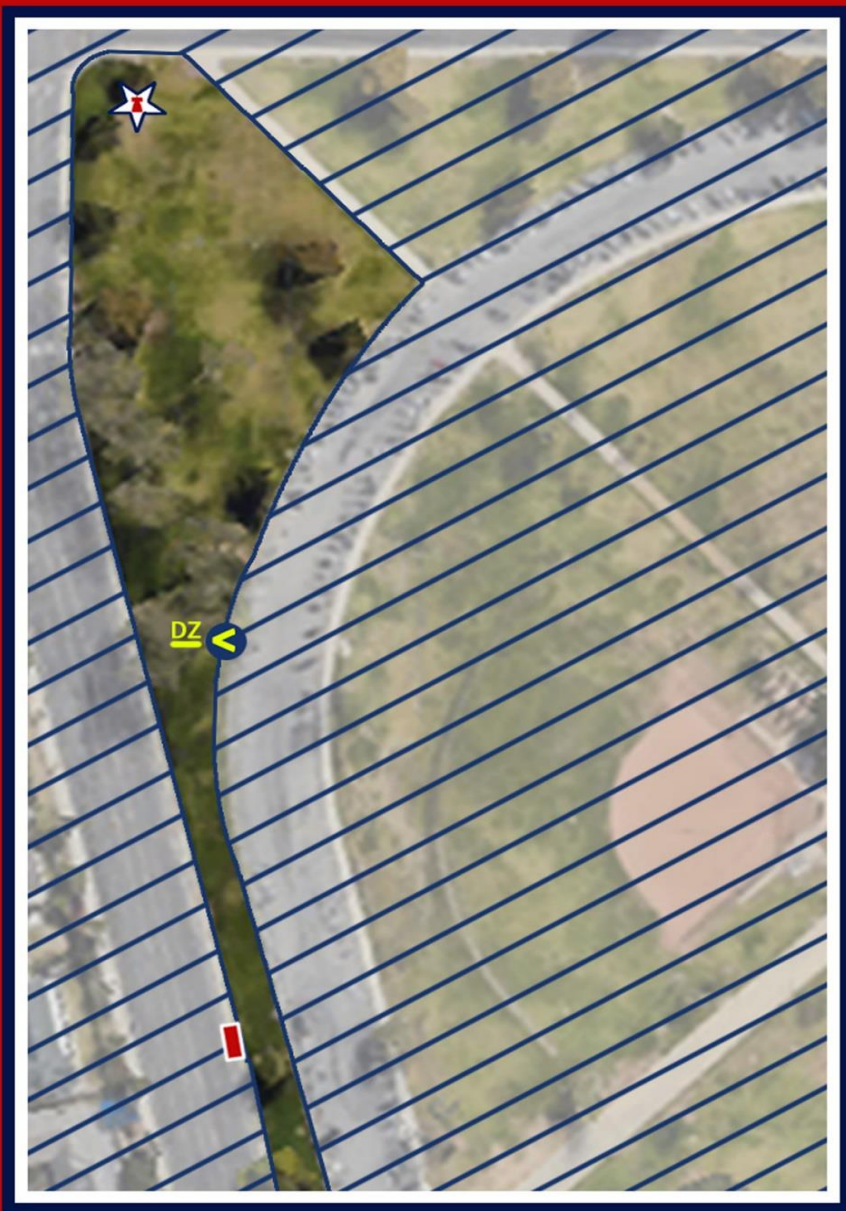
**On top of the restroom or on the cement
around the restroom is OB.**

**Marked OB lines and beyond on the right
side of the fairway are OB.**

**Discs coming to rest OB will be brought
inbounds 1 meter from where they crossed OB
with a 1 stroke penalty.**

**If your disc comes to rest on
any other tee pads surrounded by
the in-bounds area it is NOT OB.**





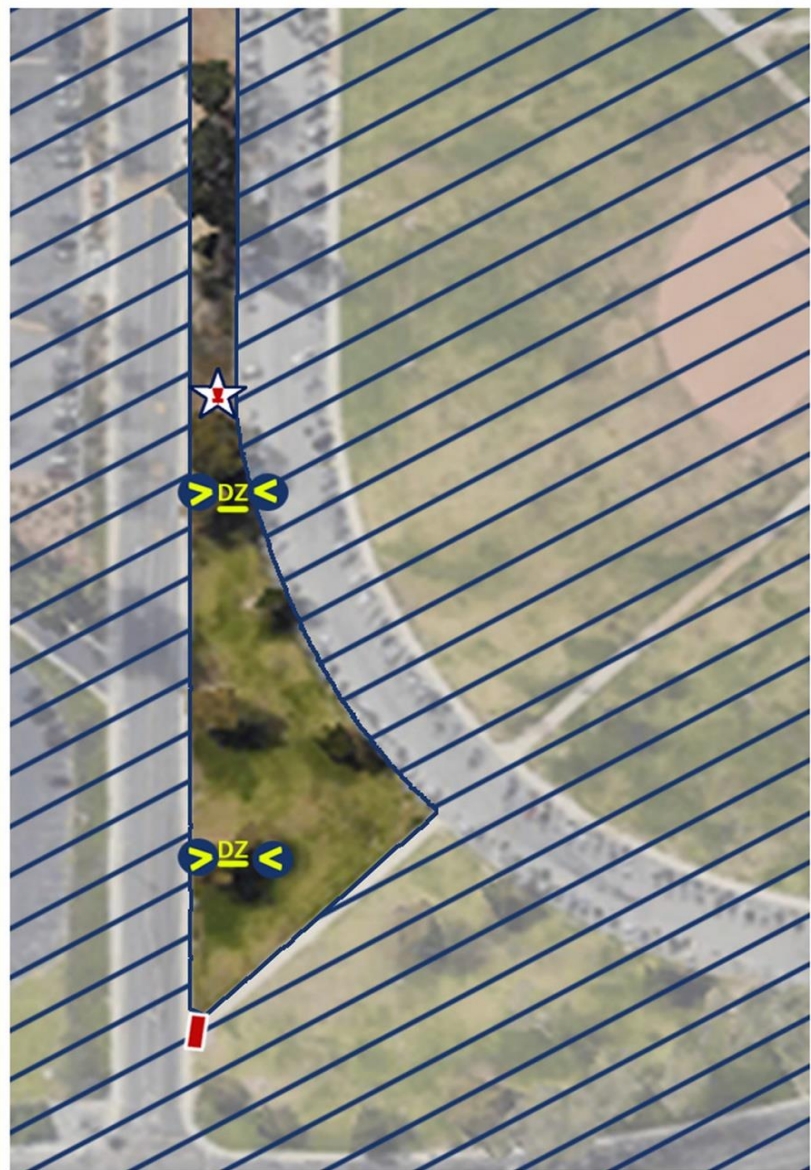
Tee pad is located about 100'
behind the normal La Mirada backside course
hole 10 tee pad.

All sidewalks and beyond are OB
Parking lot / curb and beyond is OB,

Discs coming to rest OB will be brought
inbounds 1 meter from where they crossed OB
with a 1 stroke penalty.

Throws must stay left of marked mando pole,
If the mando is missed, proceed to the marked
drop zone with a 1 stroke penalty





HOLE #16



**PAR 4
445 FT.**

Tee is located at normal La Mirada backside course hole 12 tee pad.

**All sidewalks and beyond are OB
Parking lot / curb and beyond is OB,**

**Discs coming to rest OB will be brought
inbounds 1 meter from where they crossed OB
with a 1 stroke penalty.**

**All discs must pass through both sets of mandos.
If either mando is missed at the first set of mando trees,
proceed to the drop zone between those mandos,
with a 1 stroke penalty**

**If either mando is missed at the second set of mandos,
proceed to the drop zone between those mandos,
with a 1 stroke penalty**





HOLE #17



**PAR 3
375 FT.**

**Tee is located at the normal La Mirada
backside course hole 13 tee pad.**

**All sidewalks and beyond are OB,
Beyond the baseball fence line is OB
All marked OB lines and beyond are OB.**

**Discs coming to rest OB will be brought
inbounds 1 meter from where they crossed OB
with a 1 stroke penalty.**

**All discs must pass on the left of the marked light pole mando,
If the mando is missed, proceed to the
marked drop zone with a 1 stroke penalty**





HOLE #18



**PAR 5
925 FT.**

Tee is located at the normal La Mirada
backside course hole 14 tee pad.

Beyond the baseball fence line is OB,
All marked OB lines and beyond are OB.
All gutters and beyond are OB.

All sidewalks and beyond are OB.

The sidewalk that splits the fairway
plays as a river and is OB if your disc comes to rest on it

Discs coming to rest OB will be brought
inbounds 1 meter from where they crossed OB
with a 1 stroke penalty.

All discs must go right of the of the first marked mando pole
which is also the start of the baseball fence,
If the mando is missed, proceed to the marked
drop zone with a 1 stroke penalty

There is also a set of double mandos near the basket
If either mando is missed, proceed to the marked
drop zone between the trees with a 1 stroke penalty

