

Last Chance – Omaha Caddy Book

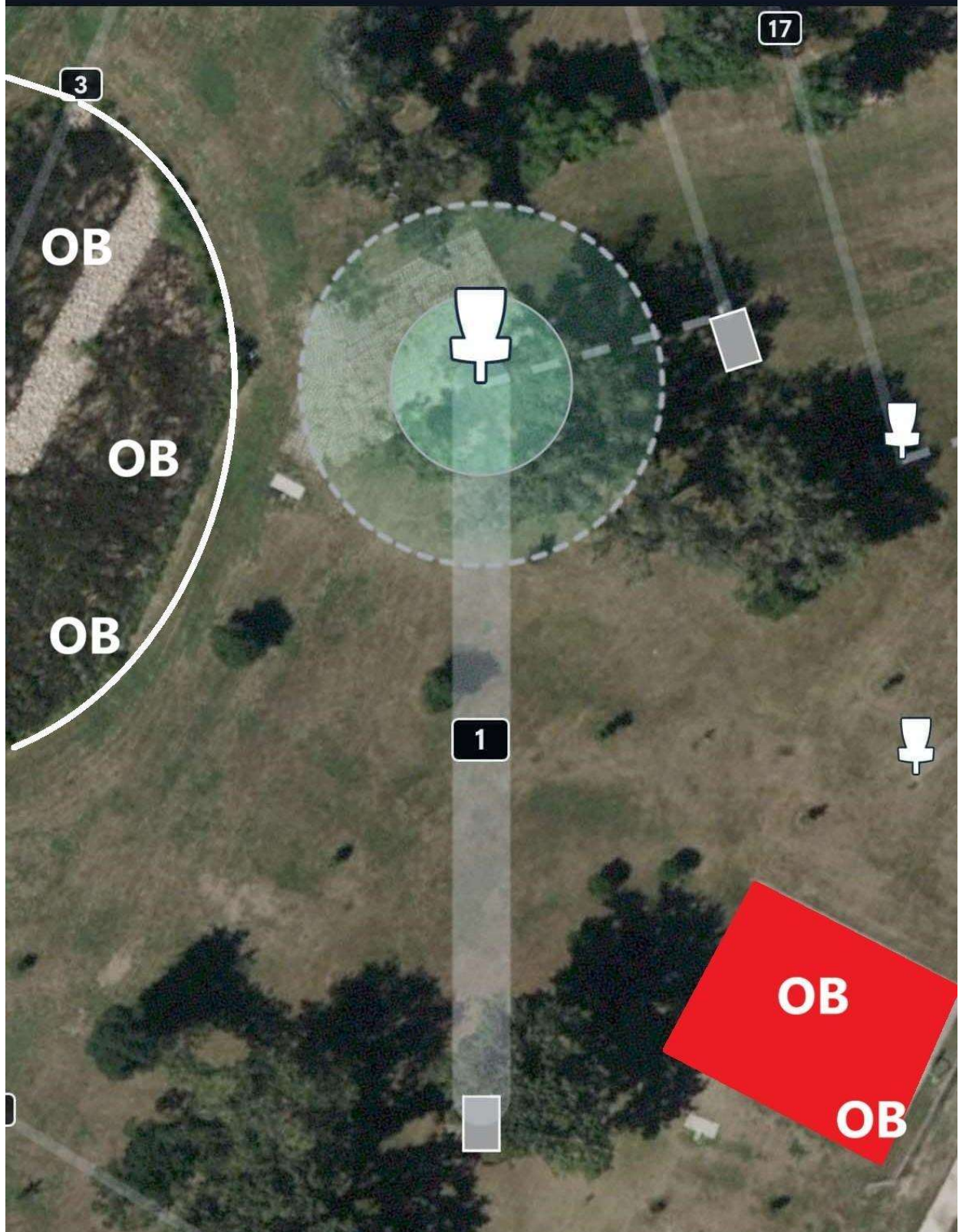
Anywhere that string is not present go flag to flag to determine OB line.

Hole #	Tee Pad	Basket	Distance	Par	Notes
1	Temp Pad 1	Basket 4	259 ft	3	OB Drainage Pond (and beyond deep). There is a marked line. OB basketball court.
2	Tee Pad 5	Basket 5	305 ft	3	OB fence and beyond
3	Tee Pad 6	Basket 8	528 ft	4	OB train tracks and beyond. OB in between the marked line around the drainage pond. If in the drainage pond throw from last place in bounds.
4	Tee Pad 9	Basket 9	358 ft	3	OB road and beyond right. OB parking lot and beyond.
5	Temp Pad 5	Temp Basket 5	538 ft	4	Double MANDO right of the first marked tree and left of the second marked tree. If MANDO is missed proceed to DZ closest to the MANDO missed with a stroke penalty. OB sidewalk and road and beyond
6	Temp Pad 6	Temp Basket 6	510 ft	4	DOUBLE MANDO between marked trees – if missed, take from marked DZ with stroke penalty. OB road (including curb) and beyond
7	Temp Pad 7	Temp Basket 7	293 ft	3	OB road (including curb) and beyond
8	Temp Pad 8	Temp Basket 8	224 ft	3	ISLAND HOLE . If island is missed on tee shot, proceed to the DZ with stroke penalty. Island is defined by the three sidewalks. Must be across the sidewalk to be safe.
9	Temp Pad 9	Temp Basket 9	312 ft	3	RIVER HOLE . River between sidewalk and drainage creek is OB. Front of all tall grass all the way to across path is OB. All of sidewalk is OB. OB Creek and beyond deep. You may lay up short of the river.
10	Temp Pad 10	Temp Basket 10	273 ft	3	OB sidewalk and beyond right. OB sidewalk and beyond.

Hole #	Tee Pad	Basket	Distance	Par	Notes
11	Temp Pad 11	Temp Basket 11	270 ft	3	TEE FROM OB. MANDO RIGHT of marked tree if Mando is missed proceed to the DZ with a stroke penalty. OB sidewalk and beyond left. If you do not cross the sidewalk you have not established in bounds and must retee. OB tall grass deep and beyond
12	Temp Pad 12	Temp Basket 12	336 ft	3	OB TALL GRASS AND BEYOND LEFT. ALL OB from tee proceed to DZ with a stroke penalty and normal OB rules following.
13	Temp Pad 13	Temp Basket 13	416 ft	4	RIVER / ISLAND HOLE. MANDO RIGHT of big power pole. Sidewalk and marked OB line in front of sidewalk across to tall grass forms "river" to create "island green." Fully surrounded by sidewalk is OB. You can lay-up short of OB River. ALL shots off the tee which miss the mando or land OB proceed to first DZ with stroke penalty. If you land safe off the tee, but your next shot misses the mando or does not land safe either before the river or on the green, proceed to first DZ with stroke penalty. Any shot taken from DZ1 which doesn't land safe on island proceeds to DZ2 in front of green with stroke penalty. All subsequent OB play as normal OB rules.
14	Temp Pad 14	Temp Basket 14	280 ft	3	TEE FROM OB. All OB off tee proceed to DZ with stroke penalty. Normal OB rules from there. You can layup short right from the tee. OB line marking "pond" short. OB fence line deep. OB sidewalk left. OB railroad tracks right.
15	Temp Pad 15	Temp Basket 15	409 ft	4	TEE FROM OB. If you don't establish in bounds, retee with stroke penalty. OB outside of soccer field fence (short, right and deep).
16	Tee Pad 16	Basket 1	225 ft	3	TEE FROM OB. If you don't establish in bounds, retee with stroke penalty. OB fence line short Must cross fence to be in bounds. MANDO RIGHT of marked pole (standard course mando) – if missed, take from DZ with stroke penalty.
17	Tee Pad 3	Basket 3	326 ft	3	
18	Tee Pad 18	Basket 7	244 ft	3	Double MANDO between marked trees. If missed proceed to DZ with stroke penalty. OB sidewalk and beyond.

		Totals	~6,080 ft	58	
--	--	---------------	-----------	----	--

Hole 1 • Par 3 • 259 ft



Hole 2 • Par 3 • 305 ft



3

OB

OB

17

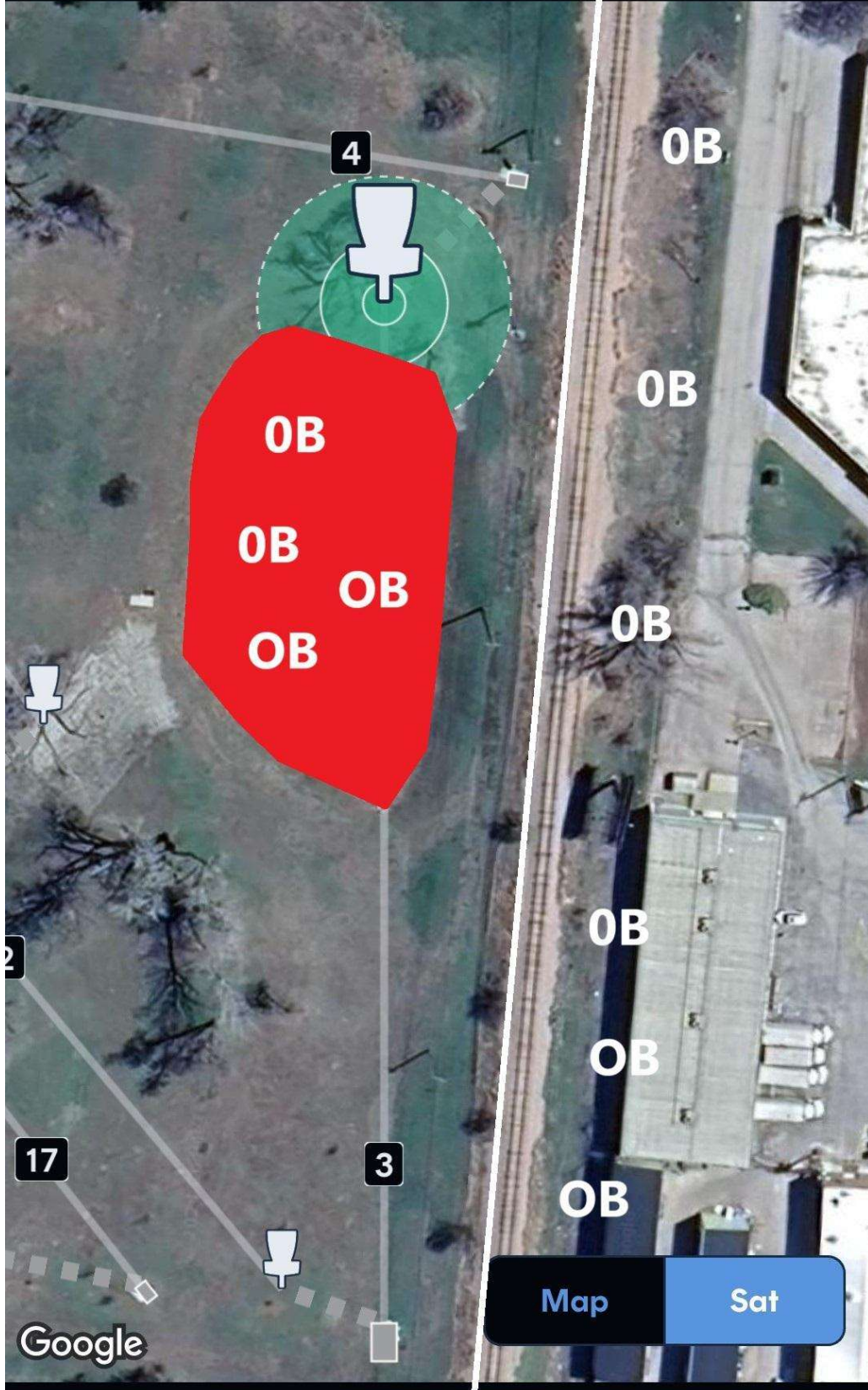
2



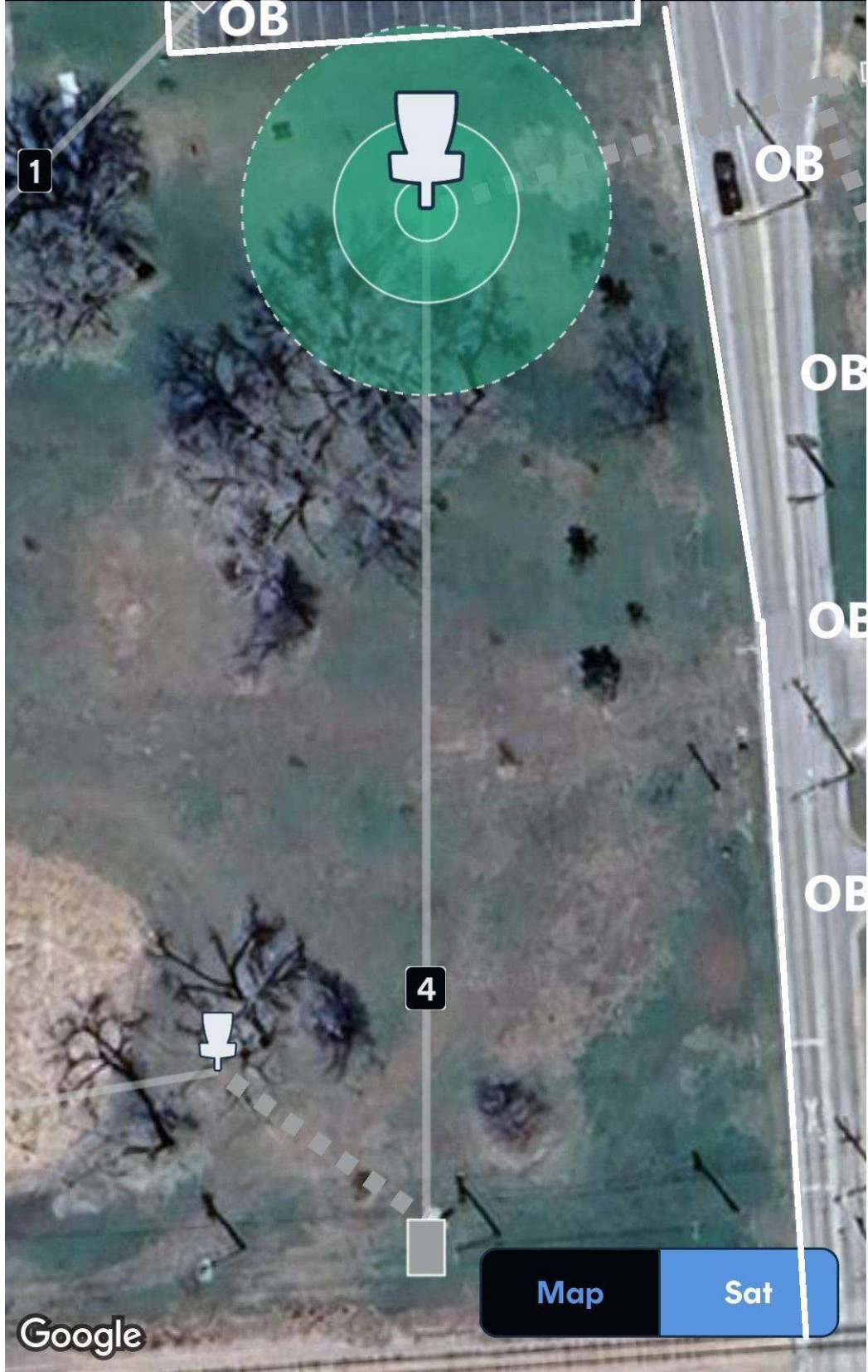
Map Sat

Google

Hole 3 • Par 4 • 528 ft



Hole 4 • Par 3 • 358 ft



OB

1

OB

OB

OB

OB

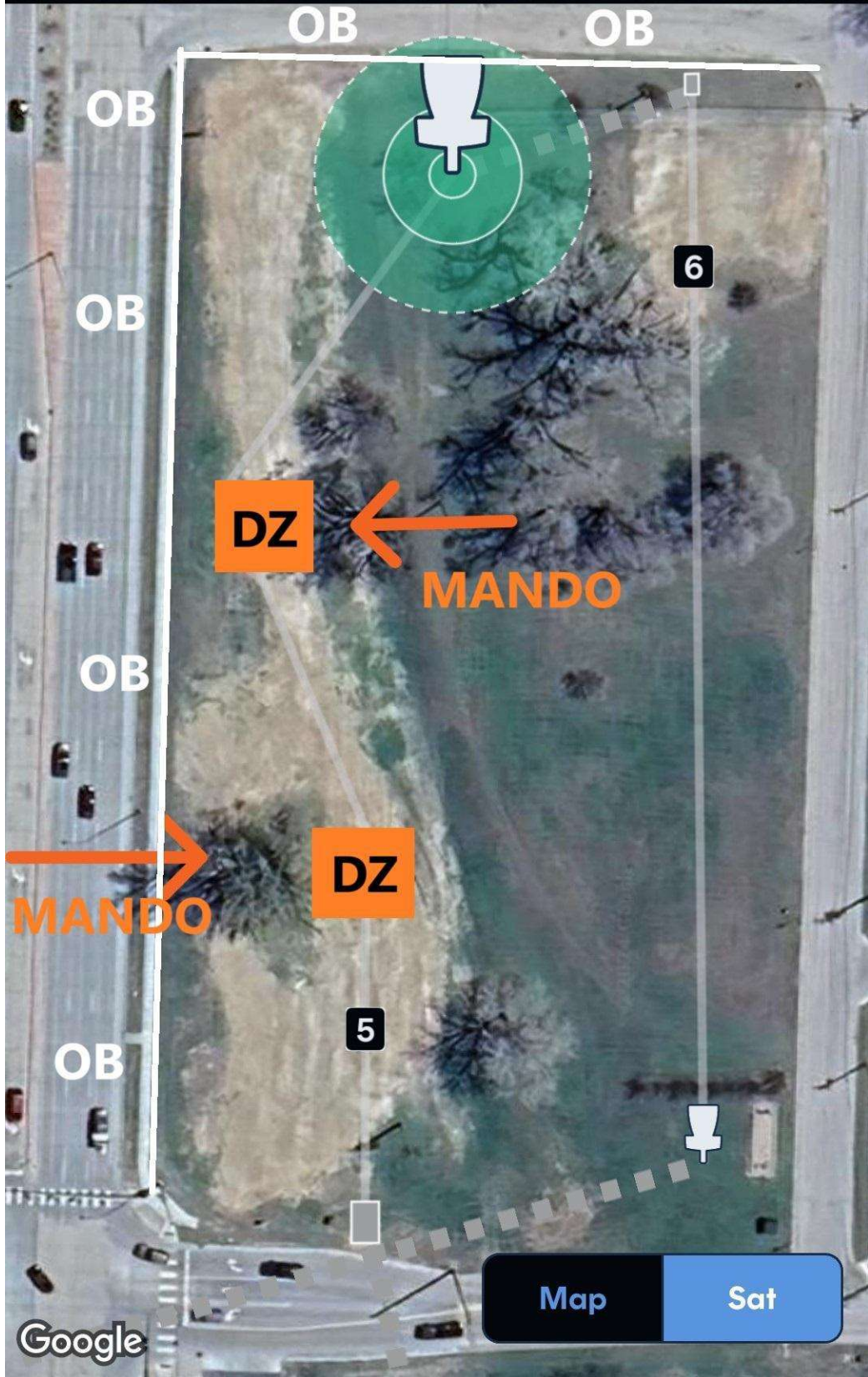
4

Google

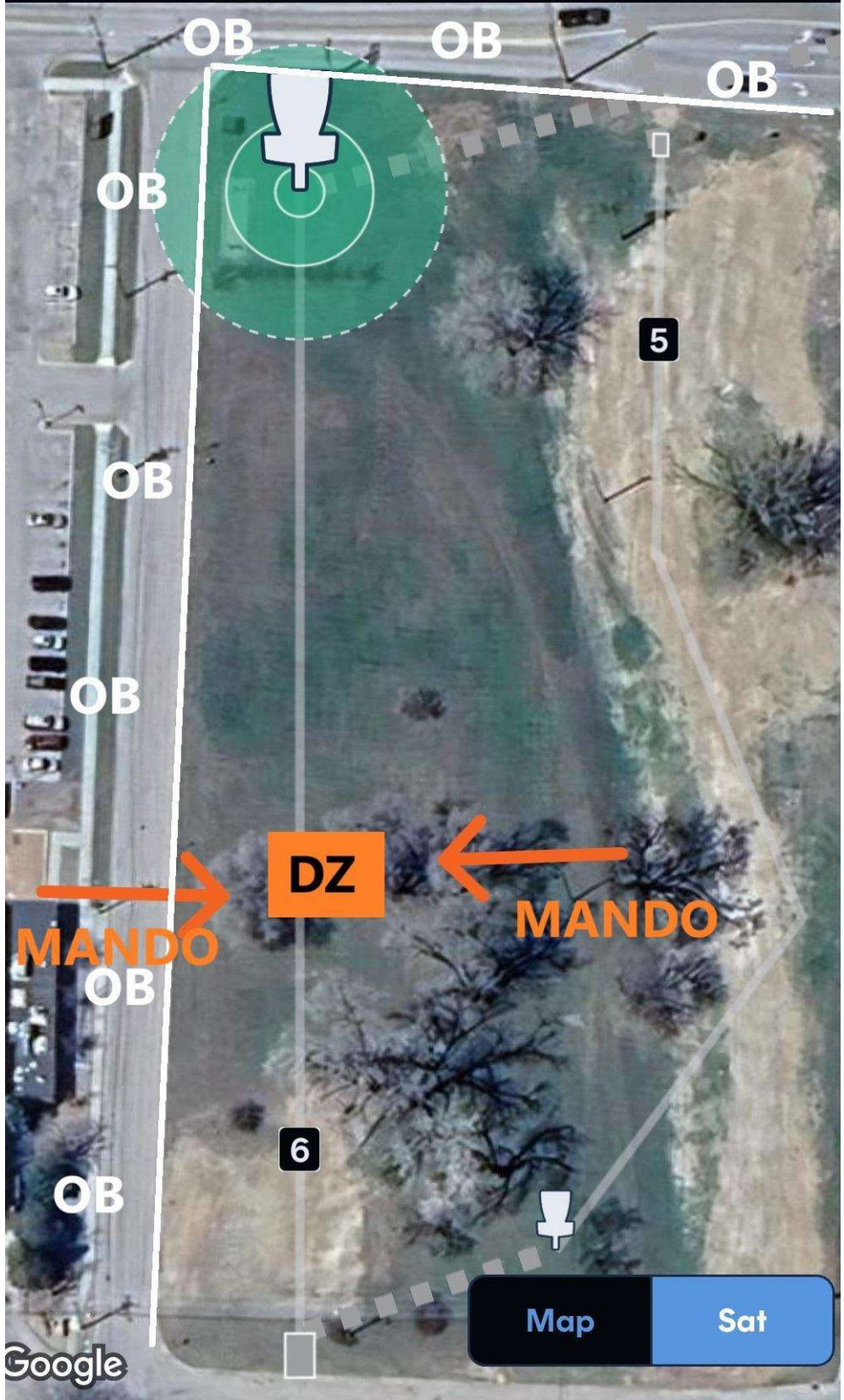
Map

Sat

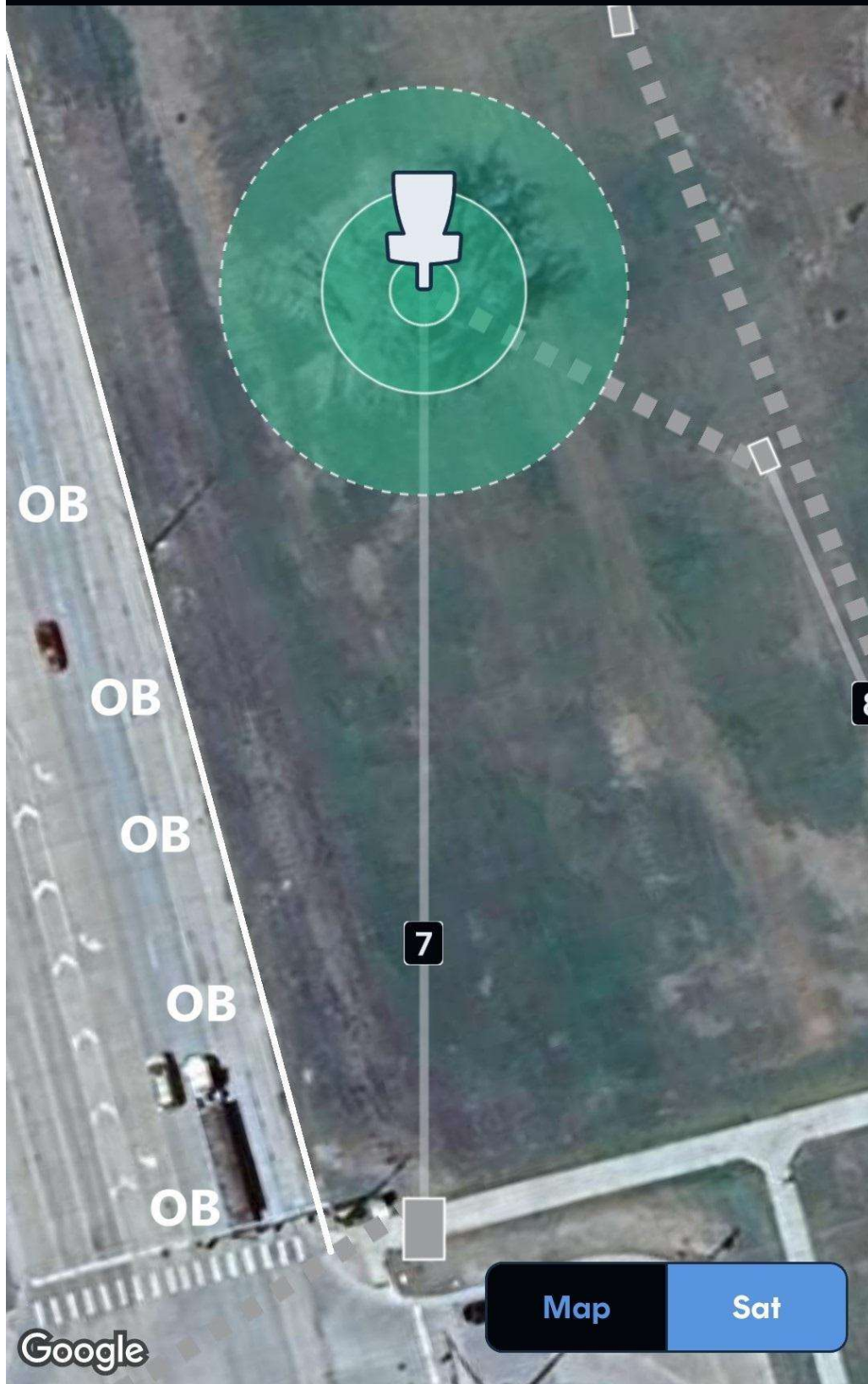
Hole 5 • Par 4 • 538 ft



Hole 6 • Par 4 • 510 ft



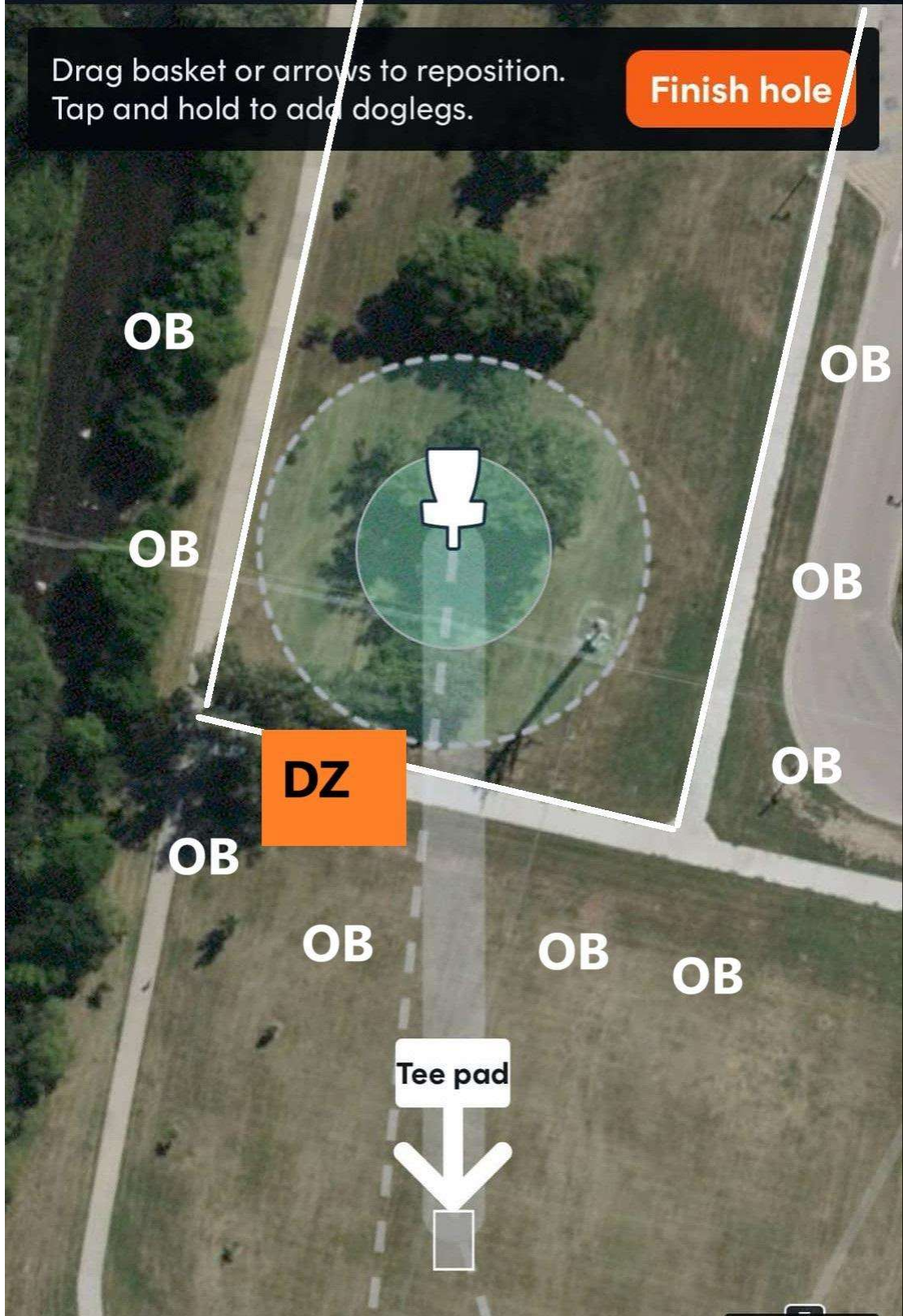
Hole 7 • Par 3 • 293 ft



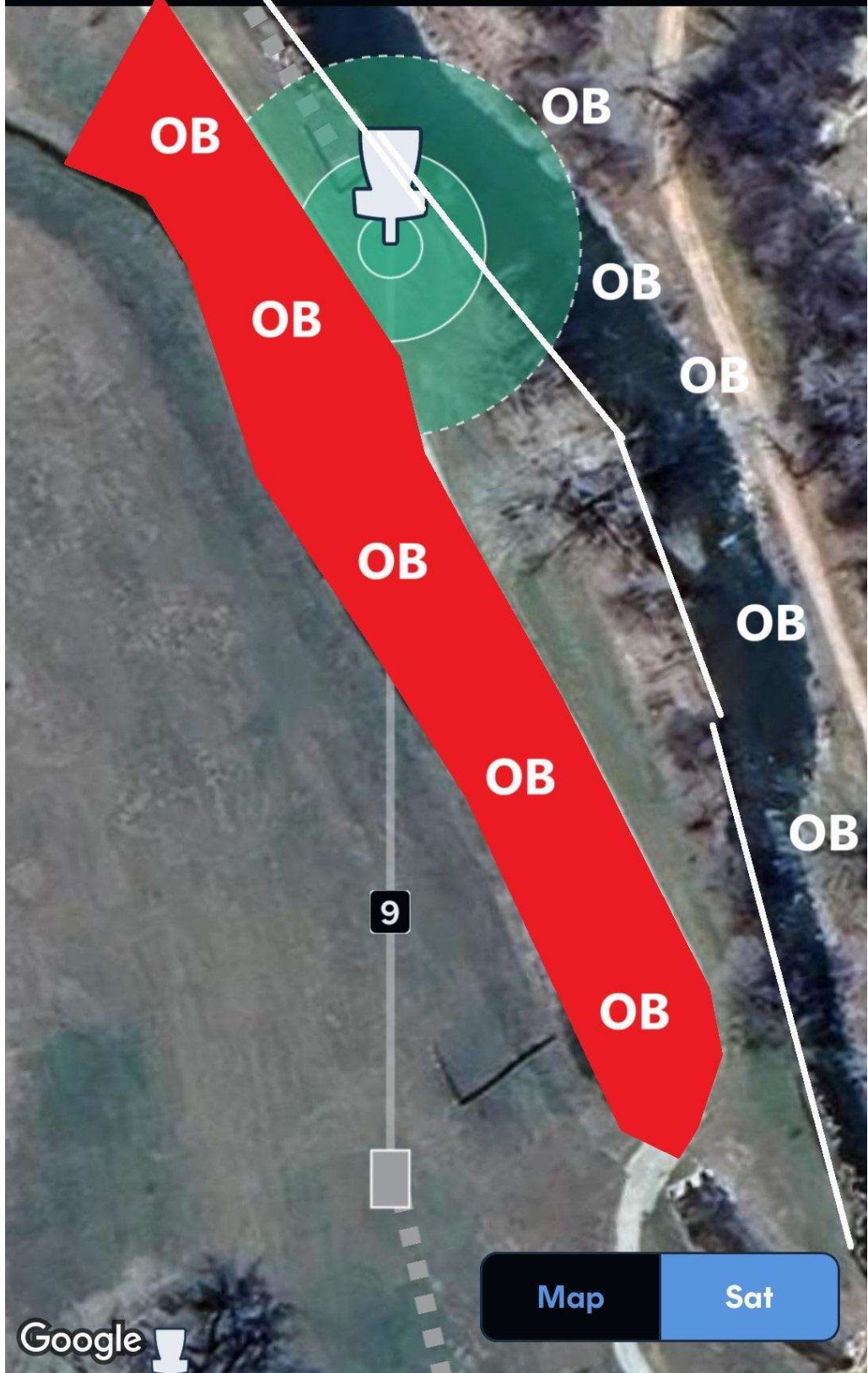
Hole 8 • Par 3 • 224 ft

Drag basket or arrows to reposition.
Tap and hold to add doglegs.

Finish hole



Hole 9 • Par 3 • 312 ft

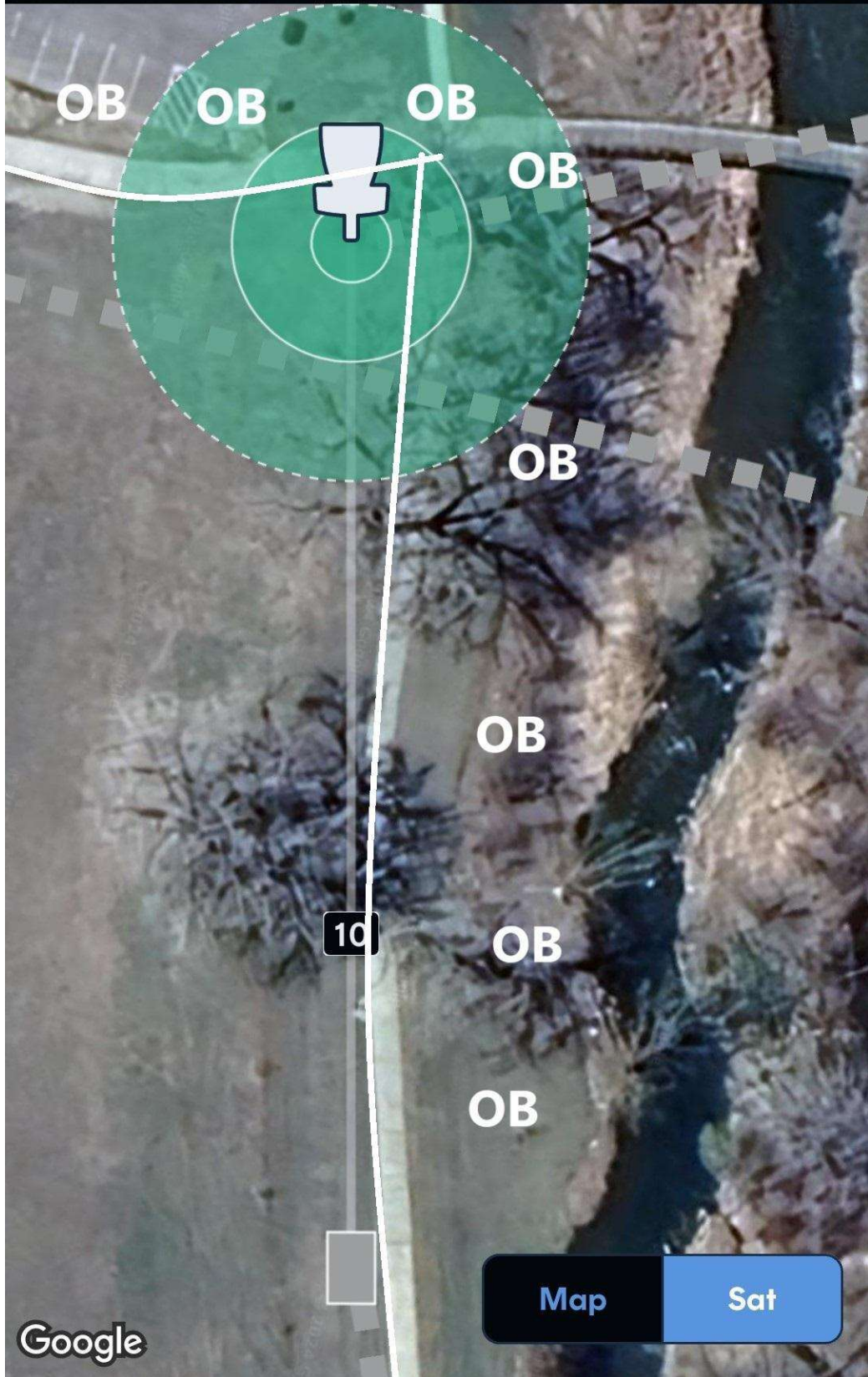


Google

Map

Sat

Hole 10 • Par 3 • 273 ft



OB

OB

OB

OB

OB

OB

OB

OB

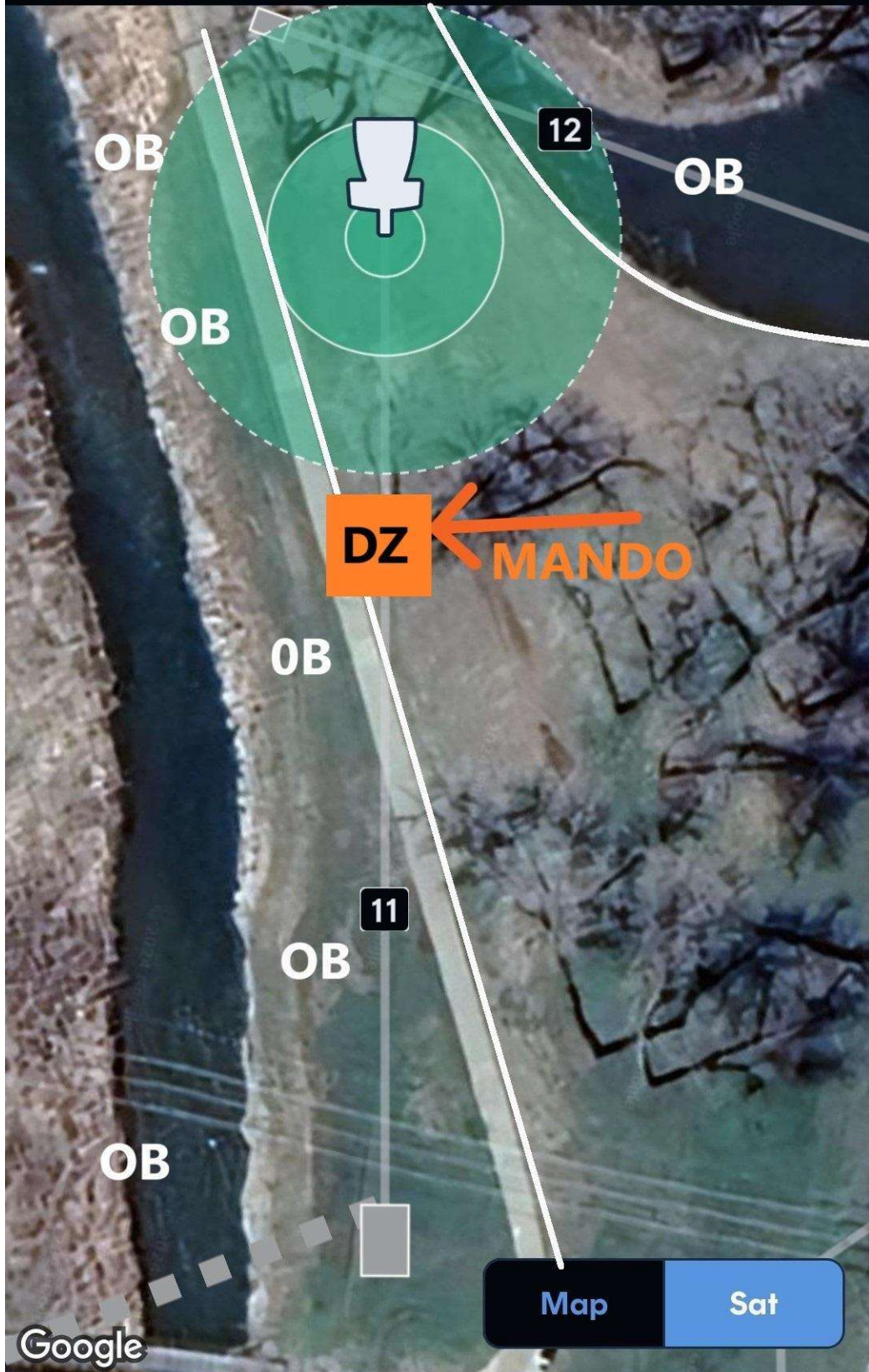
10

Map

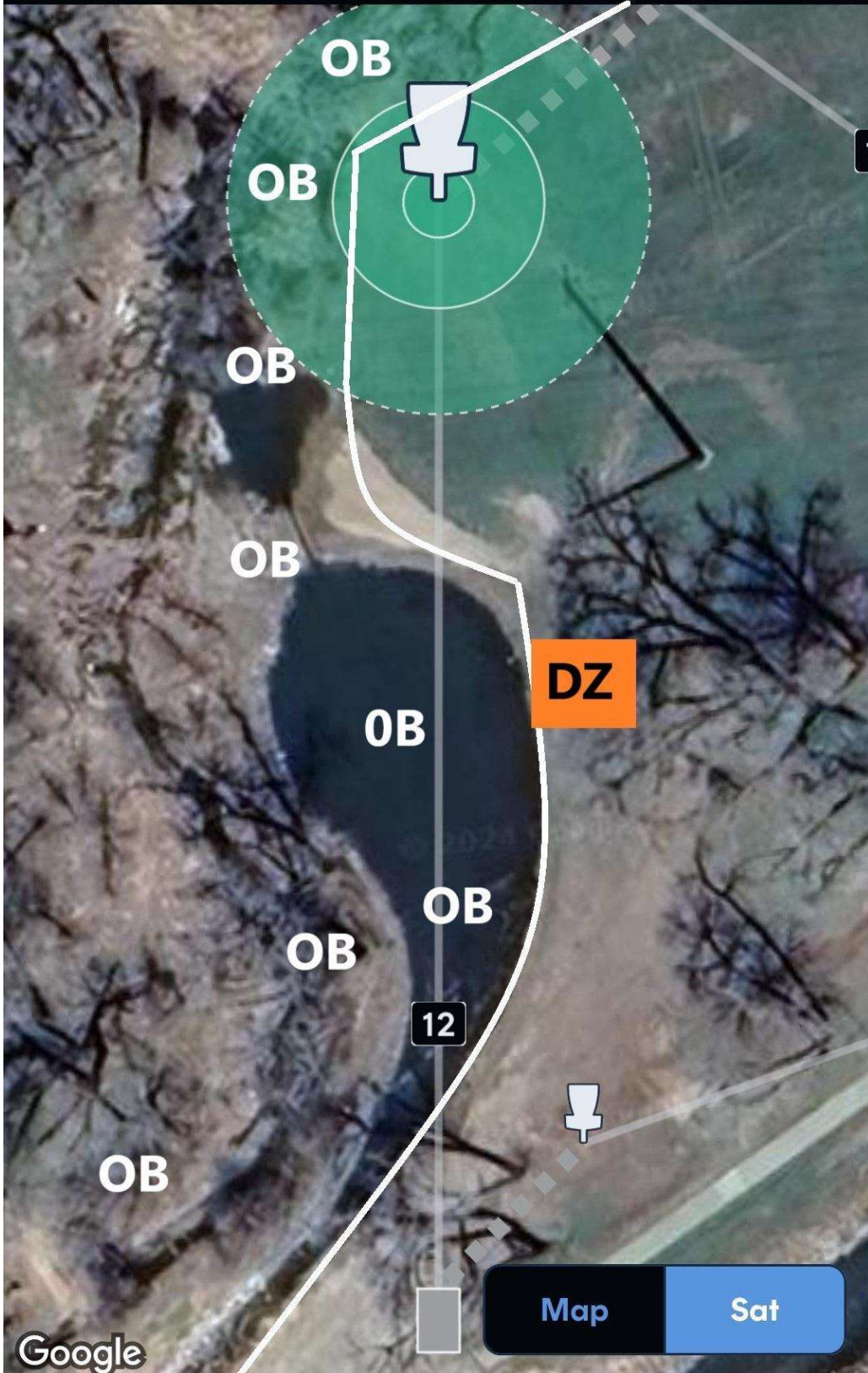
Sat

Google

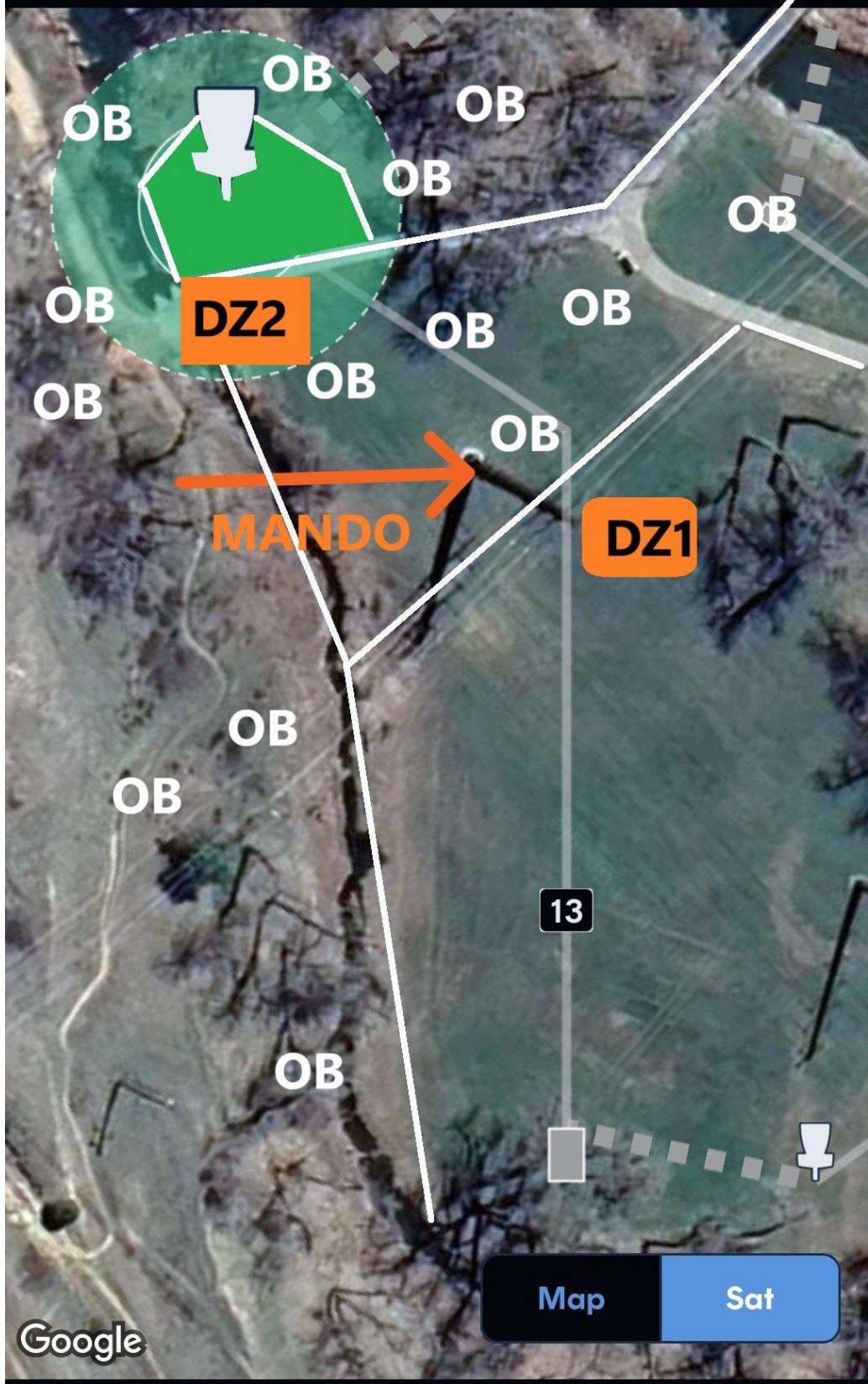
Hole 11 • Par 3 • 270 ft



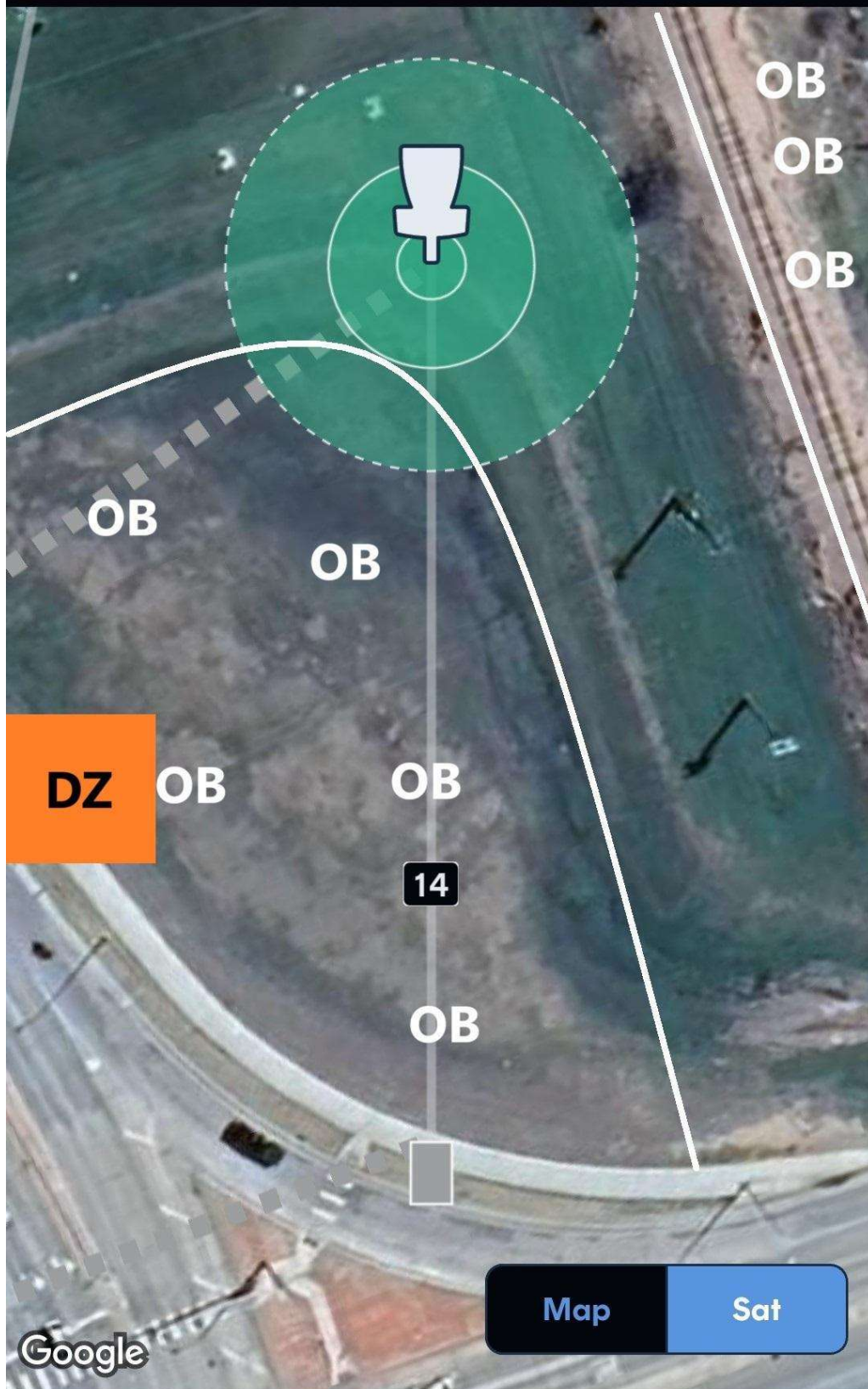
Hole 12 • Par 3 • 336 ft



Hole 13 • Par 4 • 416 ft



Hole 14 • Par 3 • 280 ft



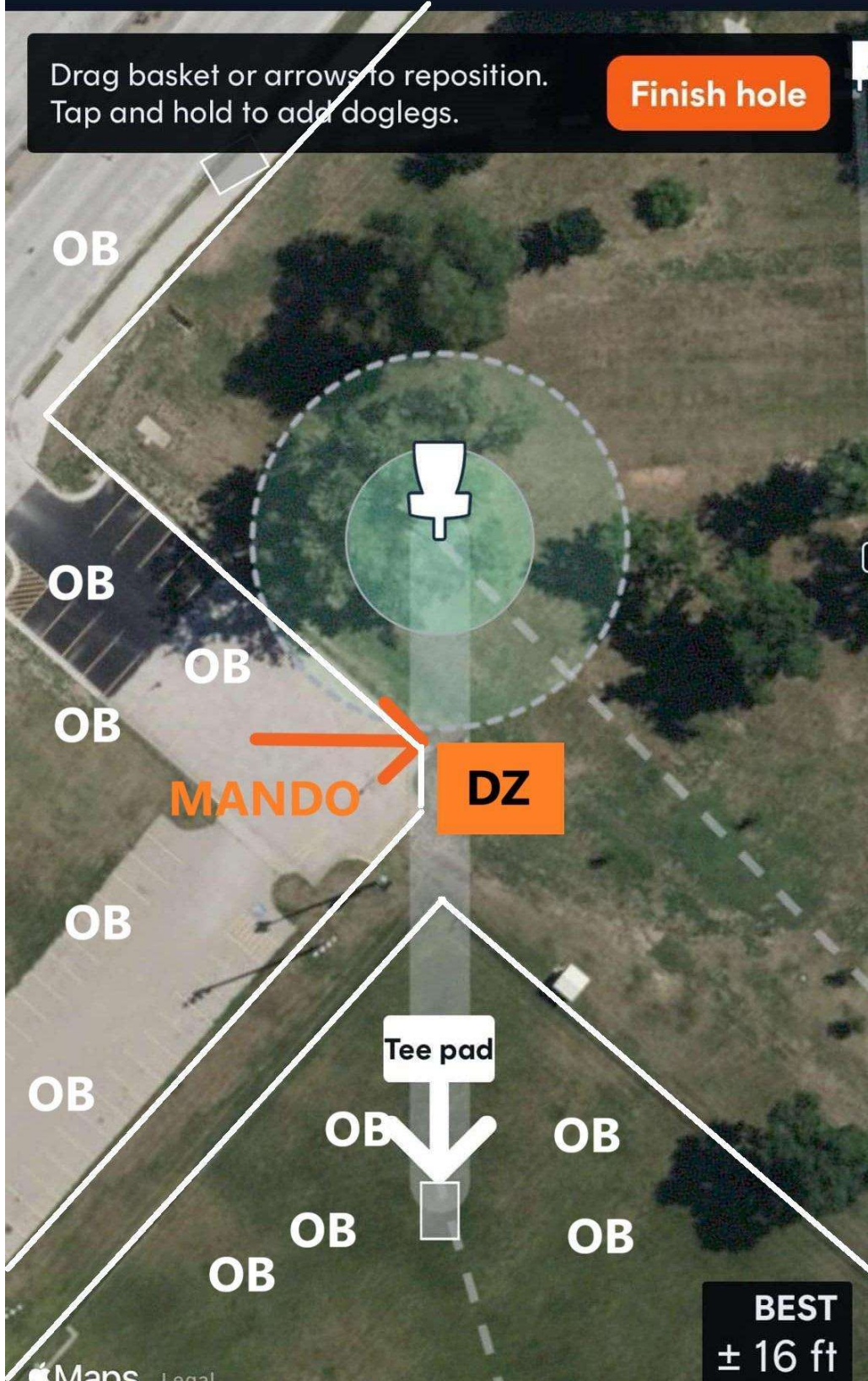
Google

Map Sat

Hole 16 • Par 3 • 225 ft

Drag basket or arrows to reposition.
Tap and hold to add doglegs.

Finish hole



Hole 17 • Par 3 • 326 ft



Hole 18 • Par 3 • 267 ft

