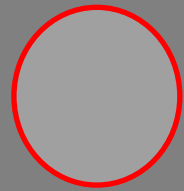


## Key



= Out of Bounds



= Correct Target



= Incorrect Target



= Mandatory Route

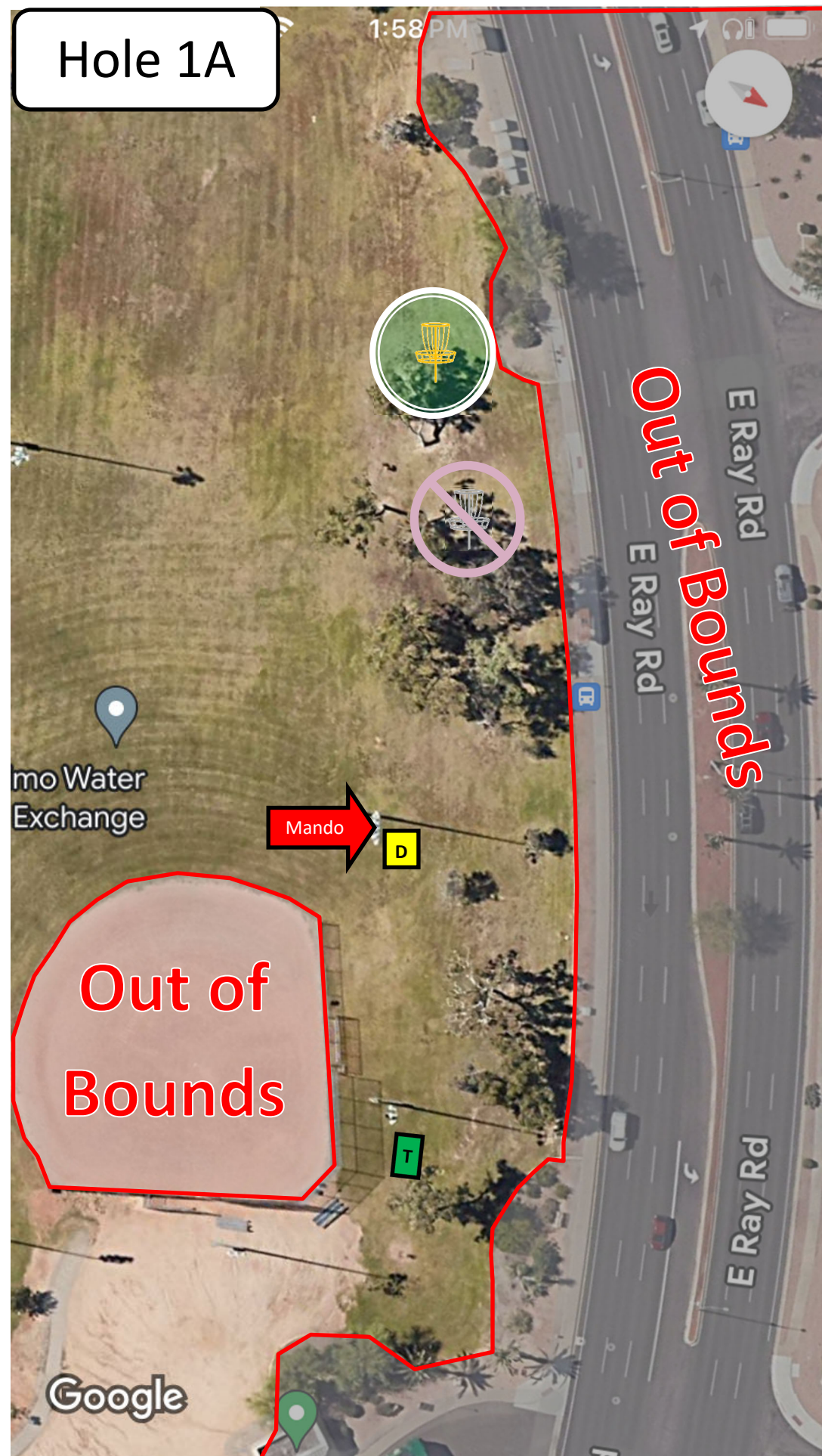


= Drop Zone



= Tee Area



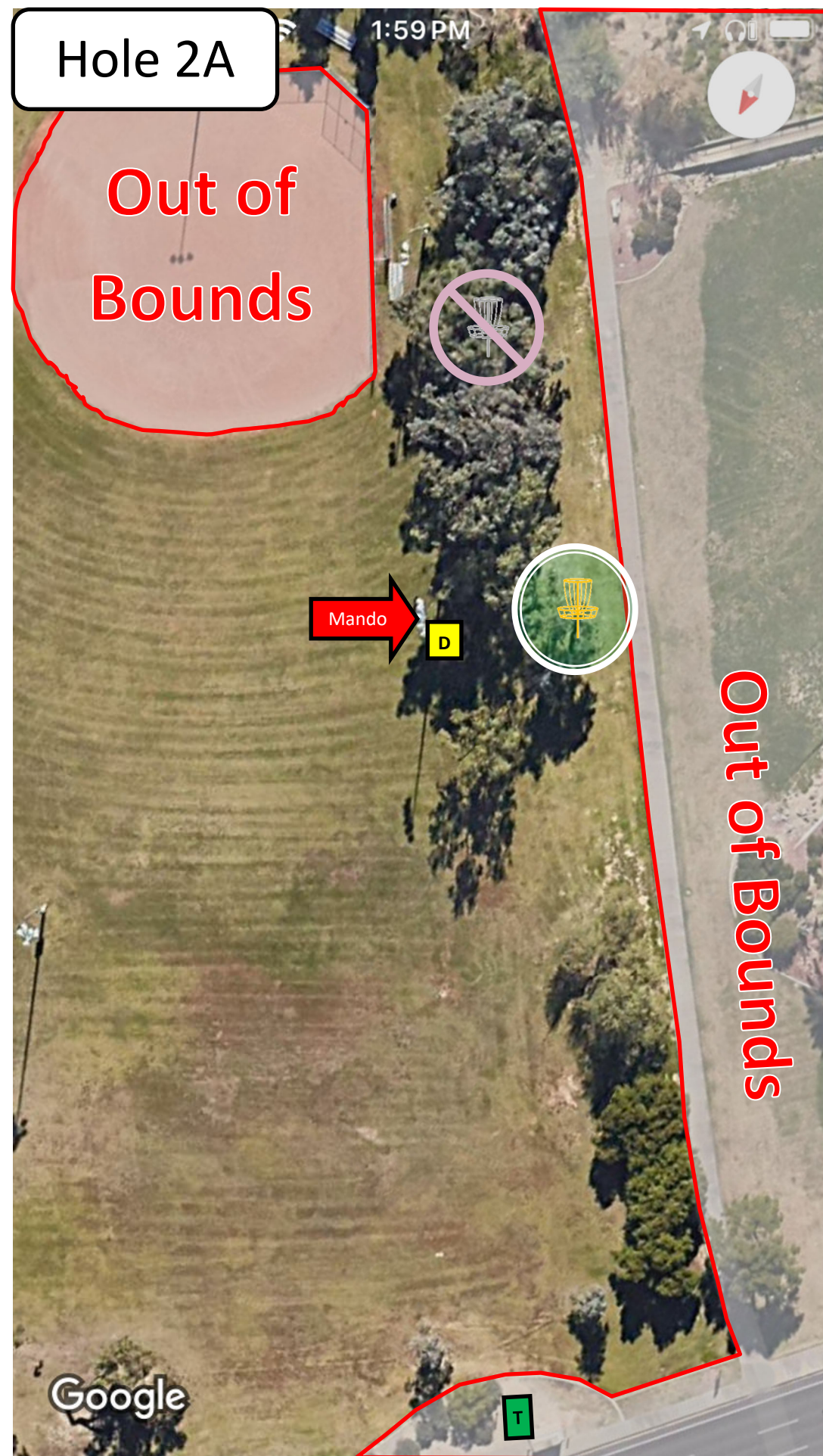


# Hole 1A

## PAR 3

- Plays from Tee 1 to basket 1A .
  - Permanent basket in the long position.
  - Approximately 315ft.
- Mandatory right of the light pole indicated with the arrow sign.
- If mandatory is missed, play from the drop zone with a one stroke penalty.
- The drop zone is located just right of the arrow sign and marked on the ground by bricks.
- Out of Bounds
  - Sidewalks and beyond
  - Concrete landscape edging and beyond
  - Softball infield dirt



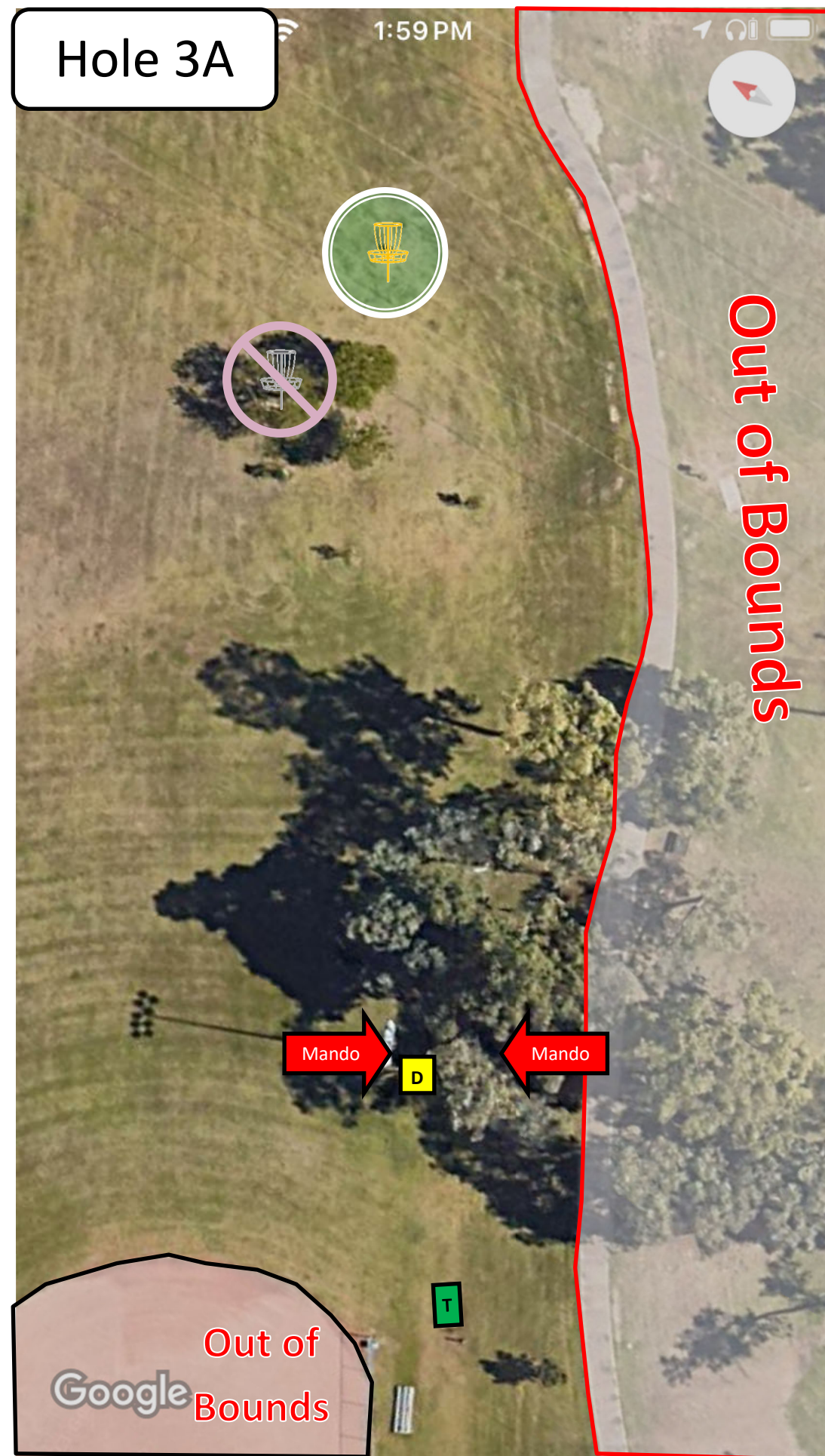


# Hole 2A

## PAR 3

- Plays from Tee 2 to basket 2A
  - Permanent basket in the short position.
  - Approximately 301ft and downhill.
- Mandatory right of the light pole indicated with the arrow sign.
- If mandatory is missed, play from the drop zone with a one stroke penalty.
- The drop zone is located just right of the arrow sign and marked on the ground by bricks.
- Out of Bounds
  - Sidewalks and beyond
  - Concrete landscape edging and beyond
  - Softball infield dirt



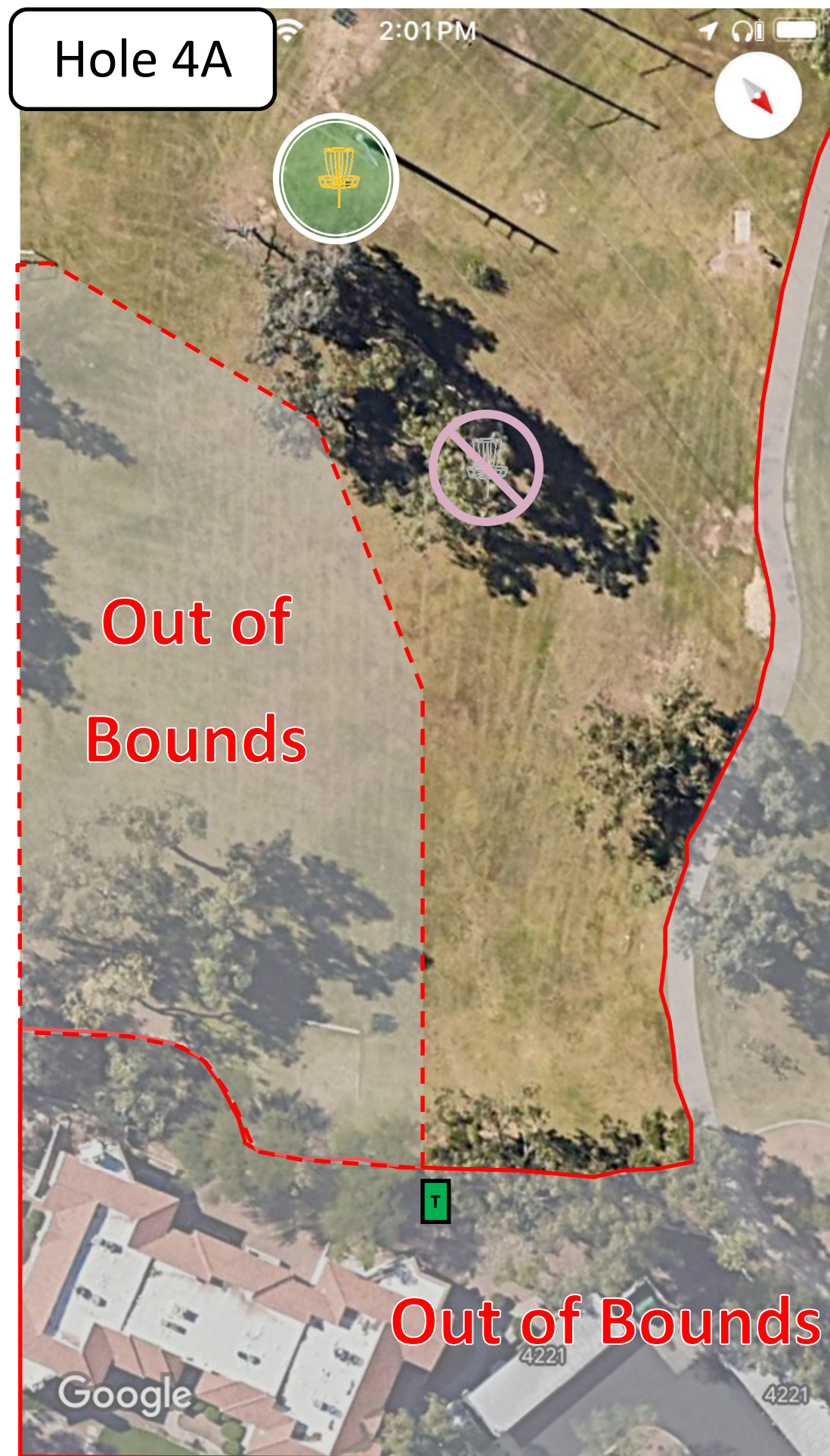


# Hole 3A

## PAR 3

- Plays from Tee 3 to basket 3A.
  - Permanent basket in the long position
  - Approximately 306ft
- Double Mandatory requiring that players throw through the cluster of trees in front of the tee (indicated by arrow signs on both sides).
- If mandatory is missed, play from the drop zone with a one stroke penalty.
- The drop zone is located just right of the arrow sign on the left side and is marked on the ground by bricks.
- Out of Bounds
  - Sidewalks and beyond
  - Concrete landscape edging and beyond
  - Softball infield dirt





# Hole 4A

## PAR 3

- Plays from Tee 4 to basket 4A.
  - Permanent basket in the long position
  - Approximately 303ft
- Out of Bounds
  - Sidewalks and beyond
  - Temporary O.B. line is added to separate the fairways for holes 4 and 8 and to add a bit more challenge to the course. This line is indicated with a dashed red line in the image and is marked on the course by flags and string.
    - The image is an approximation. What is marked on the course takes precedence.
    - A disc touching the string is considered in bounds.





# Hole 5A

## PAR 3

- Plays from Tee 5 to basket 5A .
  - Permanent basket in the short/left position.
  - Approximately 298ft and downhill.
- Mandatory left of the arrow sign to prevent discs from traveling over the walking path.
- There is no drop zone for this hole. If the mandatory is missed rethrow from the previous lie (or re-tee) with a one stroke penalty.
- Out of Bounds
  - Sidewalks and beyond
  - Concrete landscape edging and beyond
  - Discs that come to rest inside the culvert near basket 5A are out of bounds if completely resting on concrete. If the disc is touching the natural ground (dirt or grass) near the mouth of the culvert, then it is in-bounds.



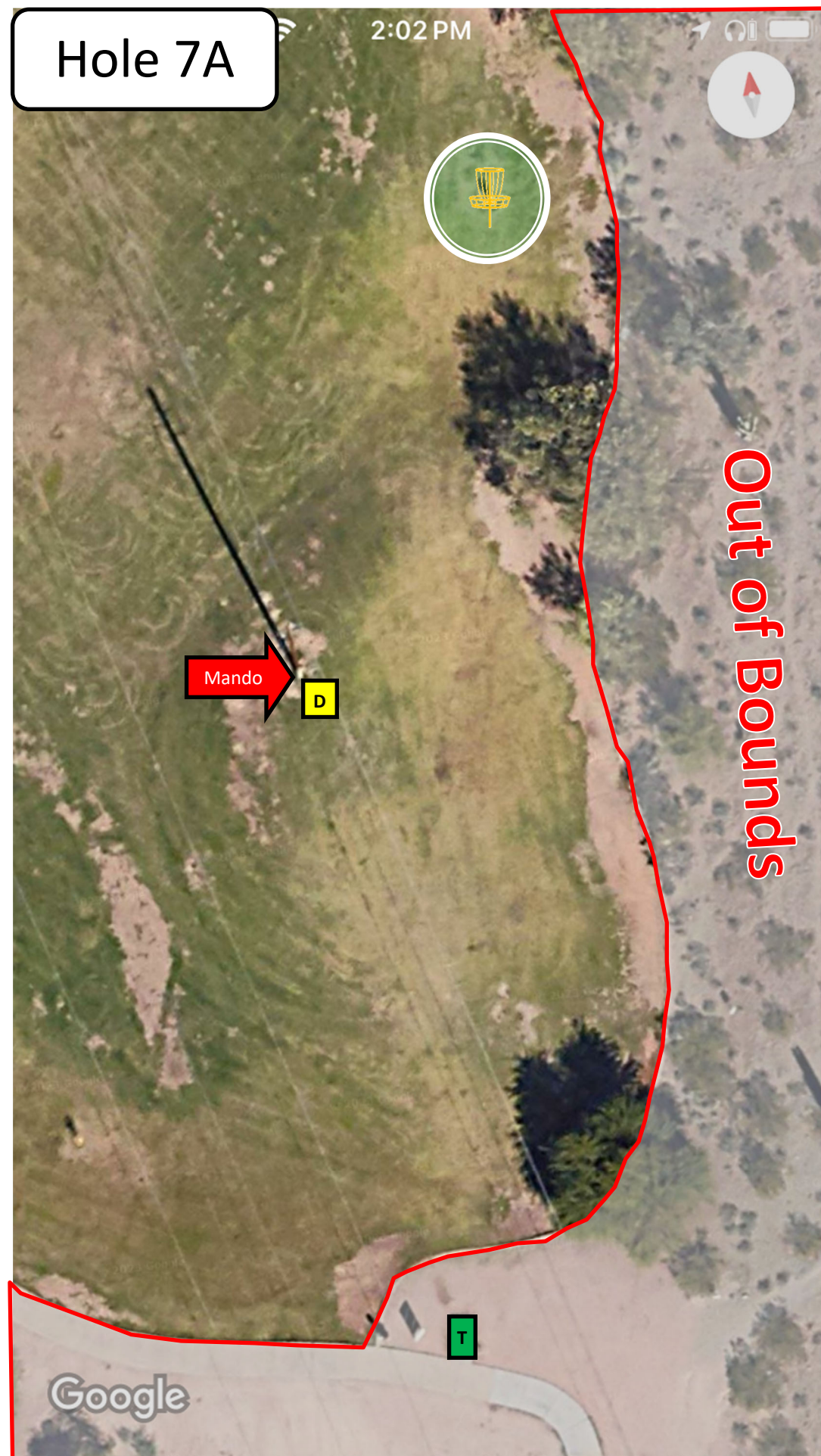


# Hole 6A

## PAR 3

- Plays from Tee 6 to basket 6A (main).
  - Permanent basket in the long position.
  - Approximately 286ft and slightly uphill.
- Out of Bounds
  - Sidewalks and beyond
  - Concrete landscape edging and beyond





# Hole 7A

## PAR 3

- Plays from Tee 7 to basket 7A (main).
  - Permanent basket in the short position.
  - Approximately 271ft and downhill.
- Mandatory right of the utility pole indicated with the arrow sign.
  - Note: This mandatory is temporary and was specially added for this tournament.
- If mandatory is missed, play from the drop zone with a one stroke penalty.
- The drop zone is located just right of the arrow sign and marked on the ground by flags.
- Out of Bounds
  - Sidewalks and beyond
  - Concrete landscape edging and beyond



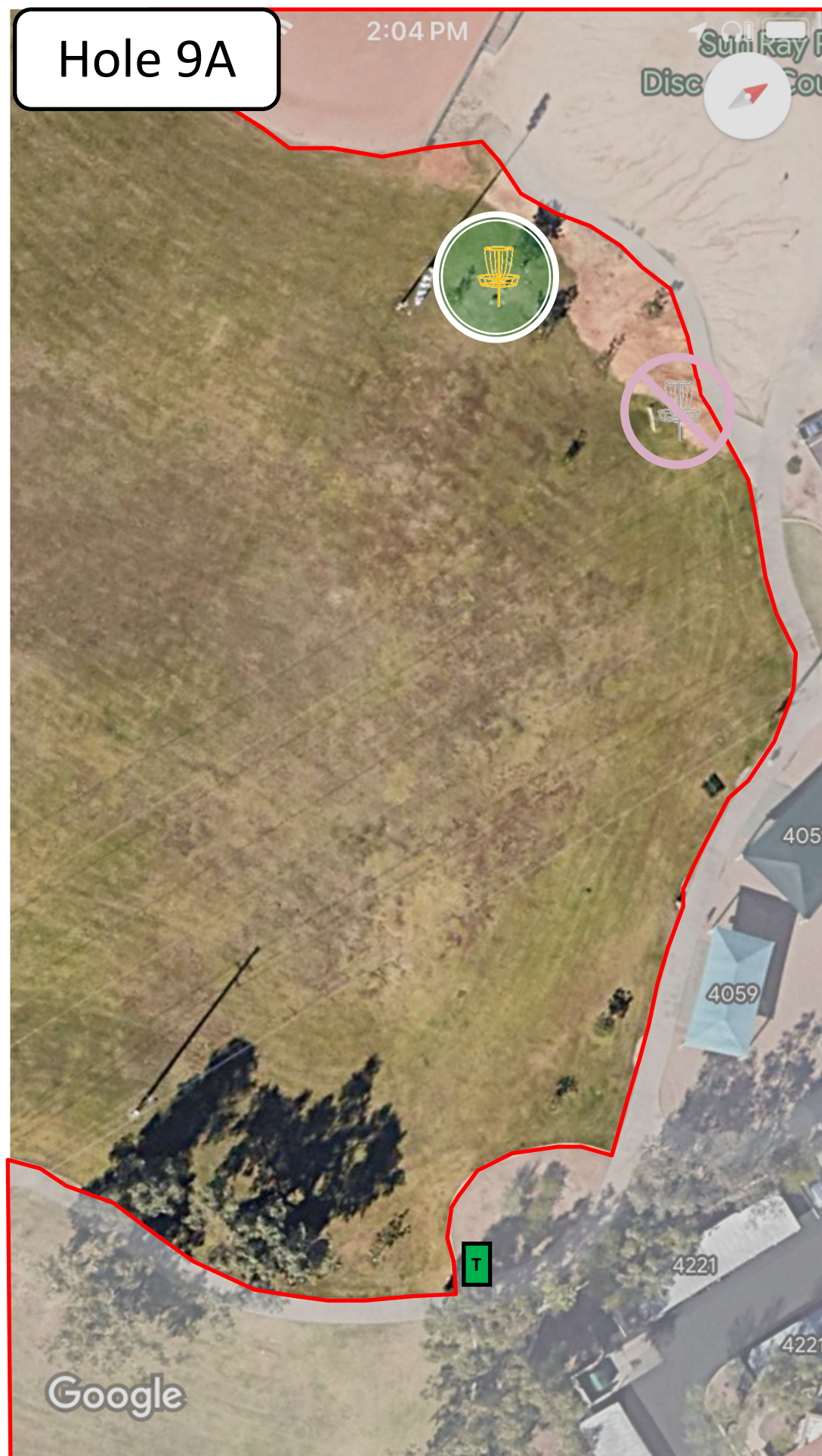


# Hole 8A

## PAR 3

- Plays from Tee 8 to basket 8A.
  - Permanent basket in the short position
  - Approximately 303ft
- Caution: The tee area is very near the basket for hole 7a. When waiting for your turn, please stand to the side of tee rather than behind
- Out of Bounds
  - Sidewalks and beyond
  - Concrete landscape edging and beyond
  - Temporary O.B. line is added to separate the fairways for holes 4 and 8 and to add a bit more challenge to the course. This line is indicated with a dashed red line in the image and is marked on the course by flags and string.
    - The image is an approximation. What is marked on the course takes precedence.
    - A disc touching the string is considered in bounds.



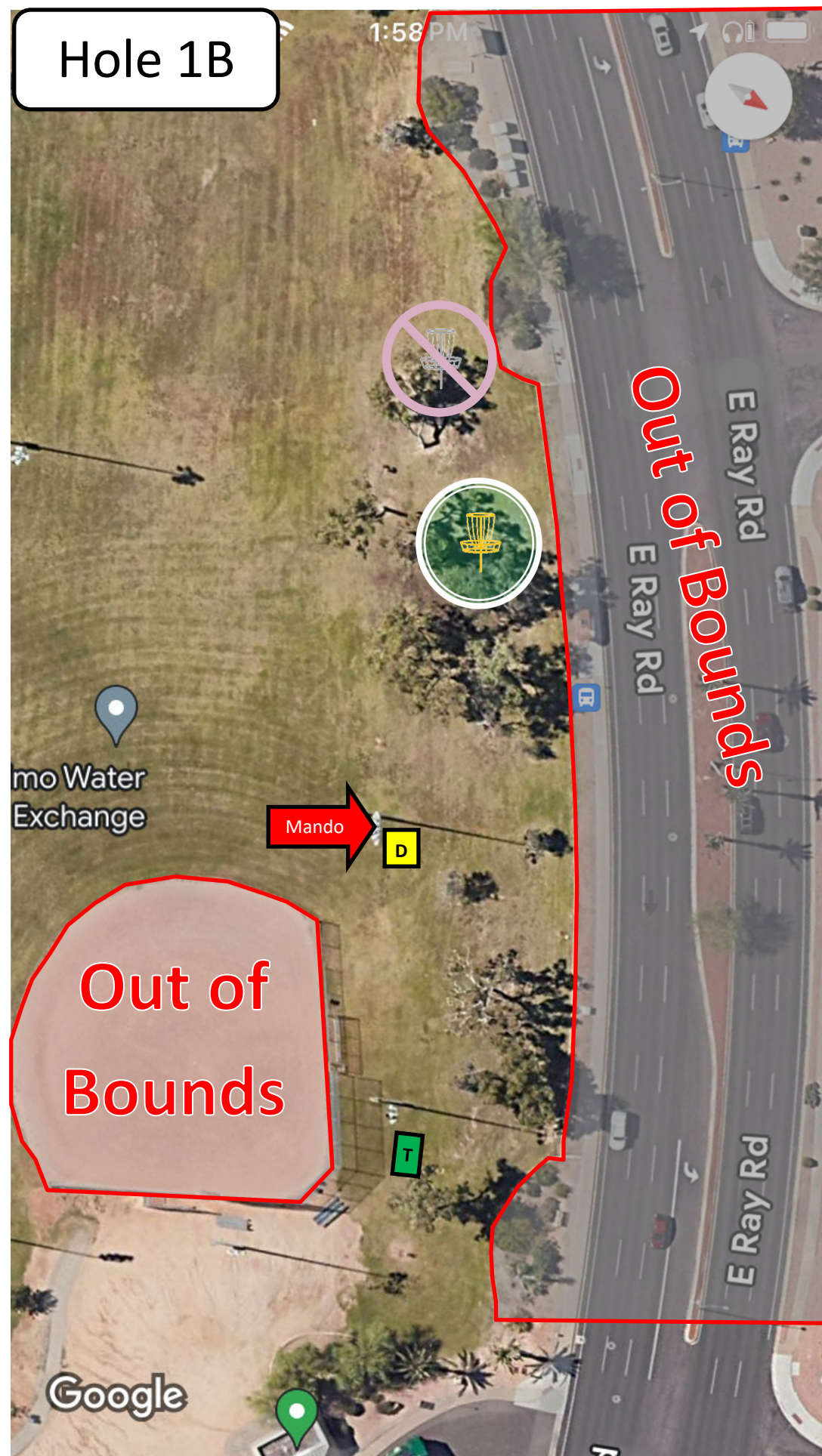


# Hole 9A

## PAR 3

- Plays from Tee 9 to basket 9A (main).
  - Permanent basket in the left/long position.
  - Approximately 333ft and downhill.
- Out of Bounds
  - Sidewalks and beyond
  - Concrete landscape edging and beyond
  - Softball infield dirt
- Note: The sidewalk directly behind basket 9A does not continue all the way to the softball fence, but the out of bounds line continues in a straight line from the end of the sidewalk to the softball fence.



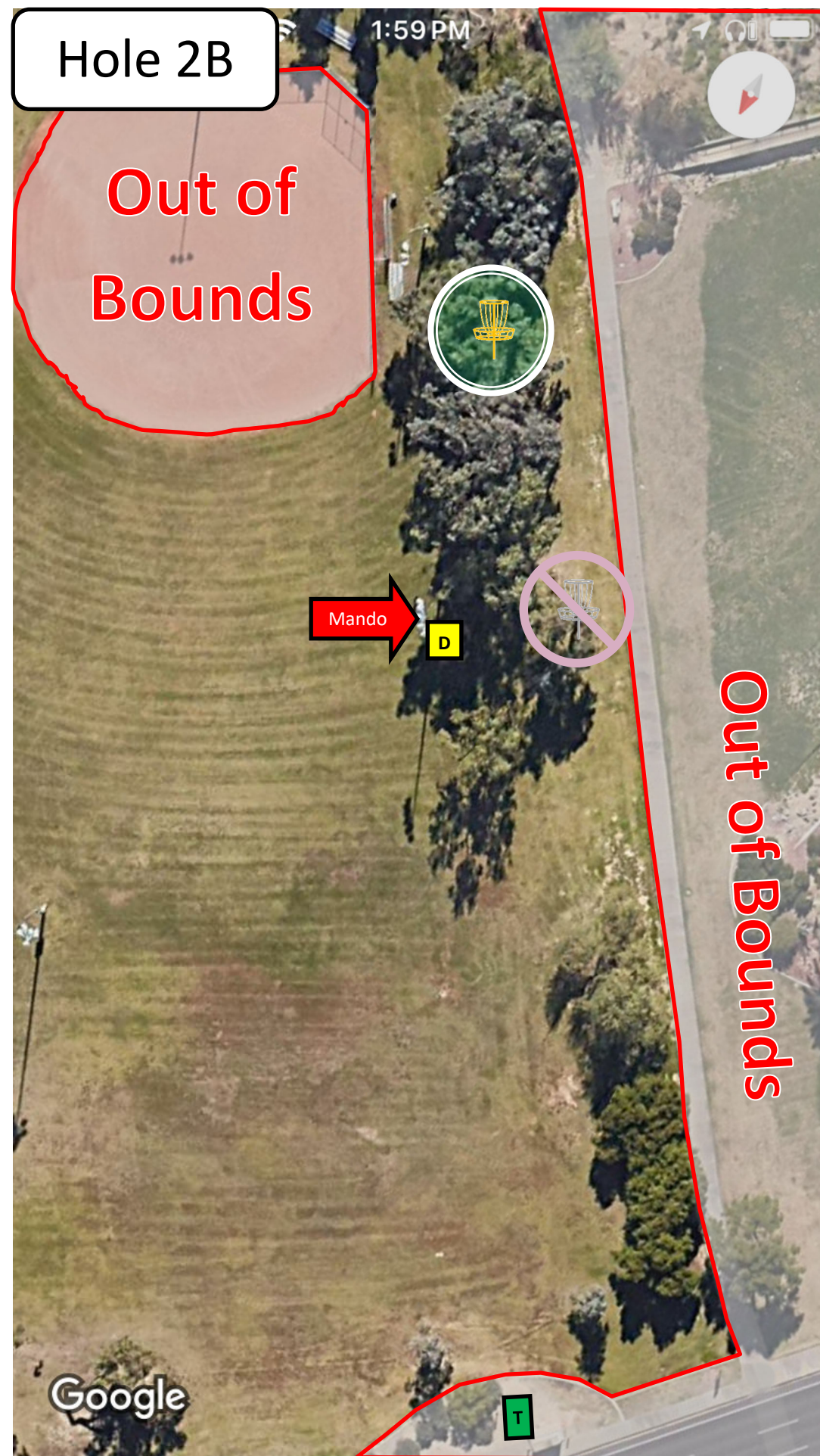


# Hole 1B

## PAR 3

- Plays from Tee 1 to basket 1B .
  - Permanent basket in the short position.
  - Approximately 263ft.
- Mandatory right of the light pole indicated with the arrow sign.
- If mandatory is missed, play from the drop zone with a one stroke penalty.
- The drop zone is located just right of the arrow sign and marked on the ground by bricks.
- Out of Bounds
  - Sidewalks and beyond
  - Concrete landscape edging and beyond
  - Softball infield dirt



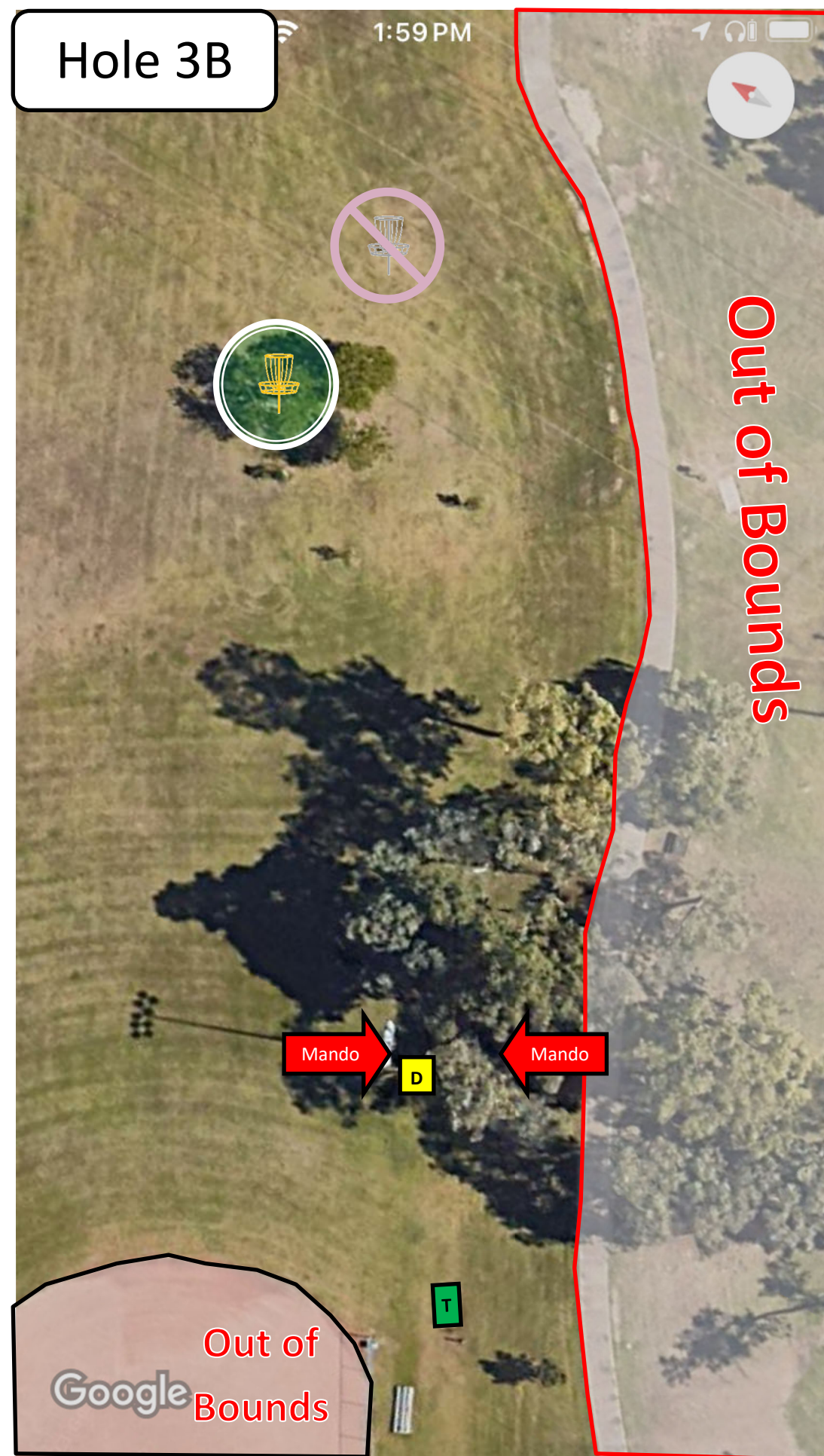


# Hole 2B

## PAR 3

- Plays from Tee 2 to basket 2B
  - Permanent basket in the long position.
  - Approximately 364ft and downhill.
- Mandatory right of the light pole indicated with the arrow sign.
- If mandatory is missed, play from the drop zone with a one stroke penalty.
- The drop zone is located just right of the arrow sign and marked on the ground by bricks.
- Out of Bounds
  - Sidewalks and beyond
  - Concrete landscape edging and beyond
  - Softball infield dirt



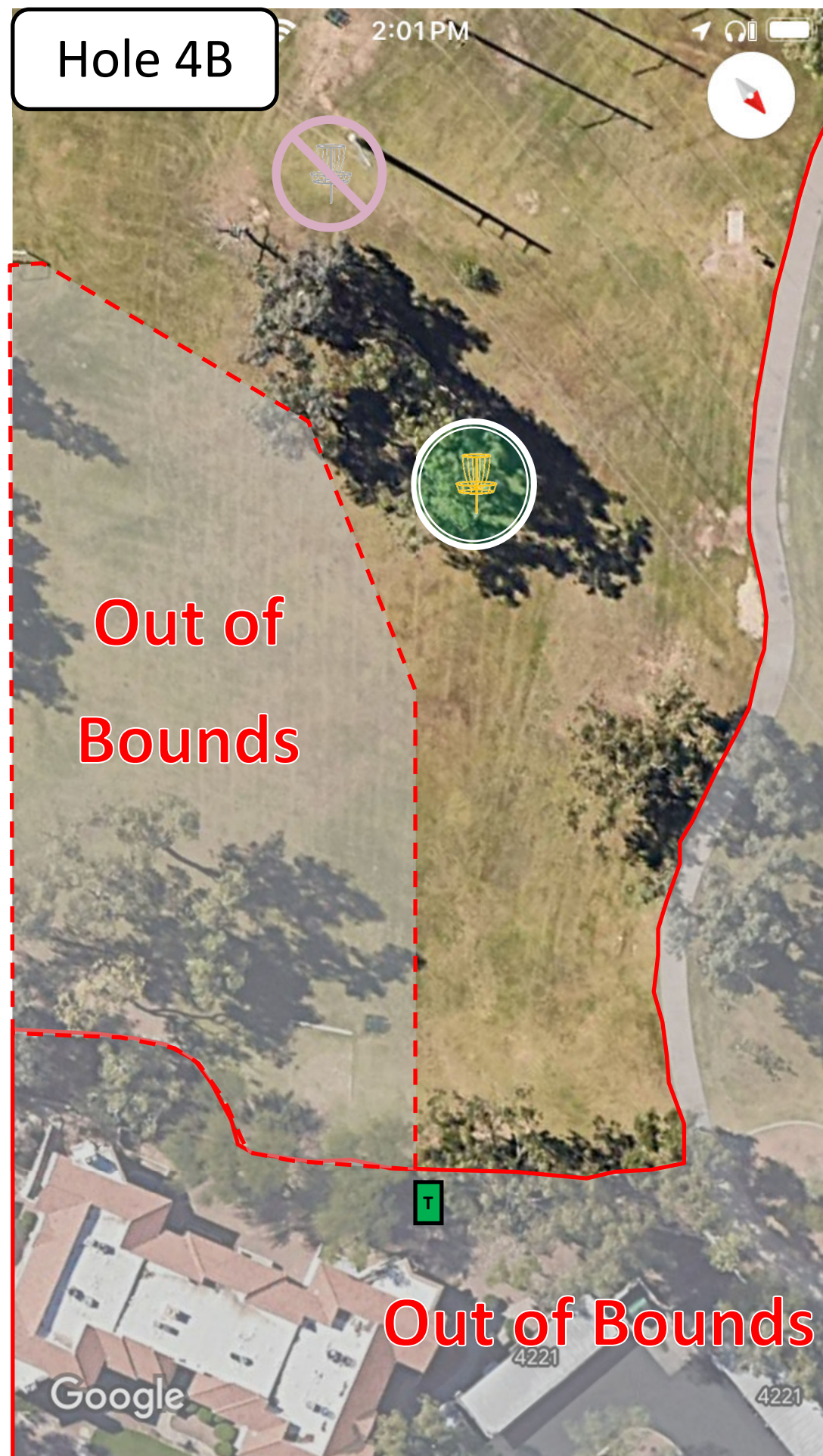


# Hole 3B

## PAR 3

- Plays from Tee 3 to basket 3B.
  - Permanent basket in the short position
  - Approximately 261ft
- Double Mandatory requiring that players throw through the cluster of trees in front of the tee (indicated by arrow signs on both sides).
- If mandatory is missed, play from the drop zone with a one stroke penalty.
- The drop zone is located just right of the arrow sign on the left side and is marked on the ground by bricks.
- Out of Bounds
  - Sidewalks and beyond
  - Concrete landscape edging and beyond
  - Softball infield dirt





# Hole 4B

## PAR 3

- Plays from Tee 4 to basket 4B.
  - Permanent basket in the long position
  - Approximately 215ft and downhill
- Out of Bounds
  - Sidewalks and beyond
  - Temporary O.B. line is added to separate the fairways for holes 4 and 8 and to add a bit more challenge to the course. This line is indicated with a dashed red line in the image and is marked on the course by flags and string.
    - The image is an approximation. What is marked on the course takes precedence.
    - A disc touching the string is considered in bounds.





# Hole 5B

## PAR 3

- Plays from Tee 5 to basket 5B .
  - Permanent basket in the long/right position.
  - Approximately 311ft and downhill.
- Mandatory left of the arrow sign to prevent discs from traveling over the walking path.
- There is no drop zone for this hole. If the mandatory is missed rethrow from the previous lie (or re-tee) with a one stroke penalty.
- Out of Bounds
  - Sidewalks and beyond
  - Concrete landscape edging and beyond
  - Discs that come to rest inside the culvert near basket 5A are out of bounds if completely resting on concrete. If the disc is touching the natural ground (dirt or grass) near the mouth of the culvert, then it is in-bounds.



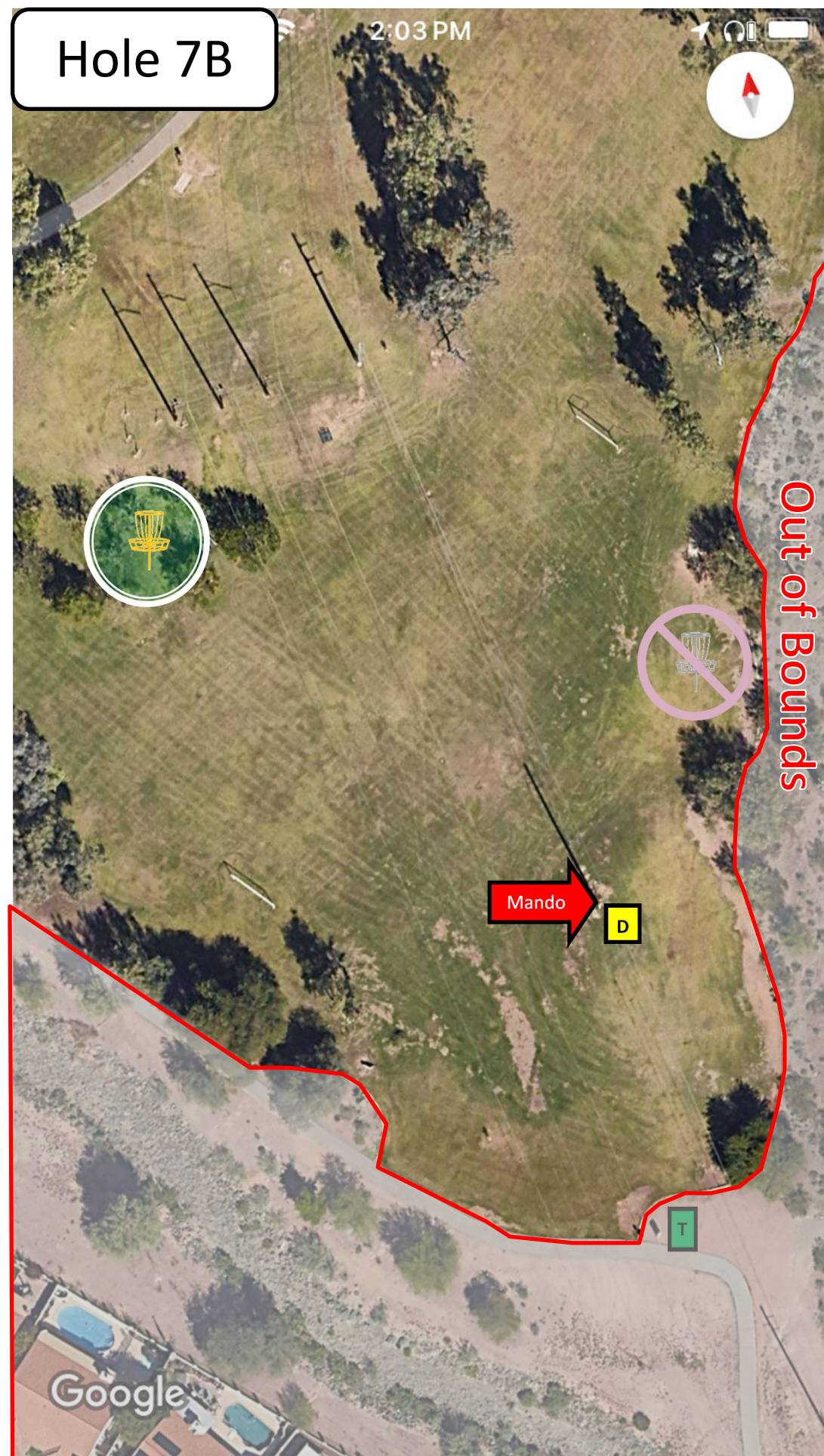


# Hole 6B

## PAR 3

- Plays from Tee 6 to basket 6B (Temporary).
  - Portable basket in the short position.
  - Approximately 230ft.
- Out of Bounds
  - Sidewalks and beyond
  - Concrete landscape edging and beyond





# Hole 7B

## PAR 4

- Plays from Tee 7 to basket 7B (temporary).
  - Portable basket in the long position.
  - Approximately 436ft and downhill.
  - Shapes as a dogleg left due to mandatory
- Mandatory right of the utility pole indicated with the arrow sign.
  - Note: This mandatory is temporary and was specially added for this tournament.
- If mandatory is missed, play from the drop zone with a one stroke penalty.
- The drop zone is located just right of the arrow sign and marked on the ground by flags.
- Out of Bounds
  - Sidewalks and beyond
  - Concrete landscape edging and beyond



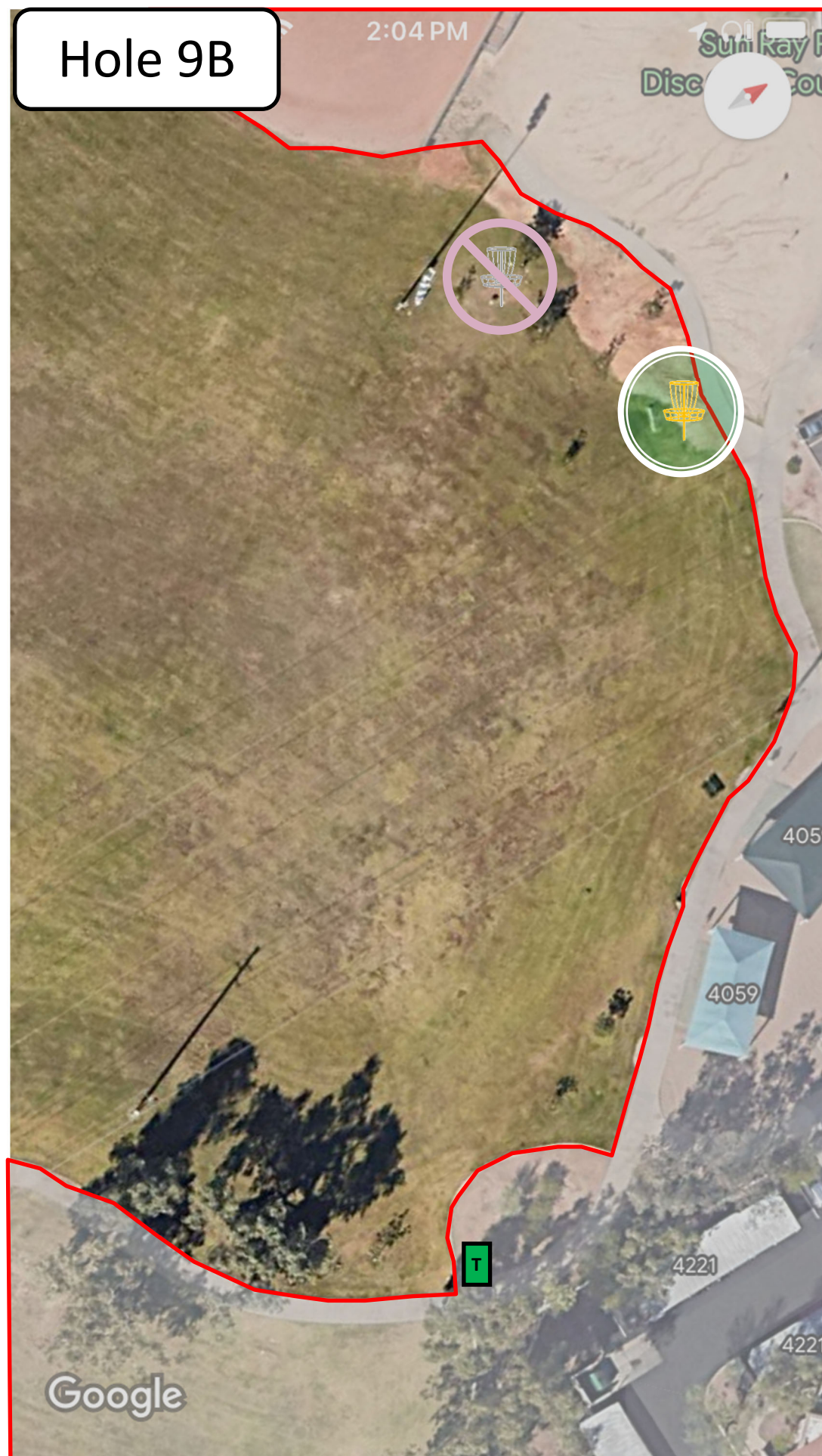


# Hole 8B

## PAR 3

- Plays from Tee 8 to basket 8B.
  - Permanent basket in the long position
  - Approximately 288ft and uphill
- Out of Bounds
  - Sidewalks and beyond
  - Concrete landscape edging and beyond
  - Temporary O.B. line is added to separate the fairways for holes 4 and 8 and to add a bit more challenge to the course. This line is indicated with a dashed red line in the image and is marked on the course by flags and string.
    - The image is an approximation. What is marked on the course takes precedence.
    - A disc touching the string is considered in bounds.





# Hole 9B

## PAR 3

- Plays from Tee 9 to basket 9B (Temporary).
  - Portable basket in the right/short position.
  - Approximately 300ft and downhill.
- Out of Bounds
  - Sidewalks and beyond
  - Concrete landscape edging and beyond
  - Softball infield dirt
- Note: The sidewalk directly behind basket 9A does not continue all the way to the softball fence, but the out of bounds line continues in a straight line from the end of the sidewalk to the softball fence.