

Valley Park Caddy Book for the 2024 Putnam County Classic

General Course Rules: Over any fence, on or across any concrete road/paved road/sidewalk is OB. There is some barbed wire fence on holes 2, 3, 4, and 7, you may receive up to 2 meters relief. For the Ponds, if any part of the disc is touching land, you are in bounds. On Hole 15, if disc is touching wood, you are in bounds.

Hole 1: Long - Par 4 - 506 ft.
Short - Par 3 - 242 ft.

Sponsored by



DEDICATED TO THE INJURED AND THEIR FAMILIES.

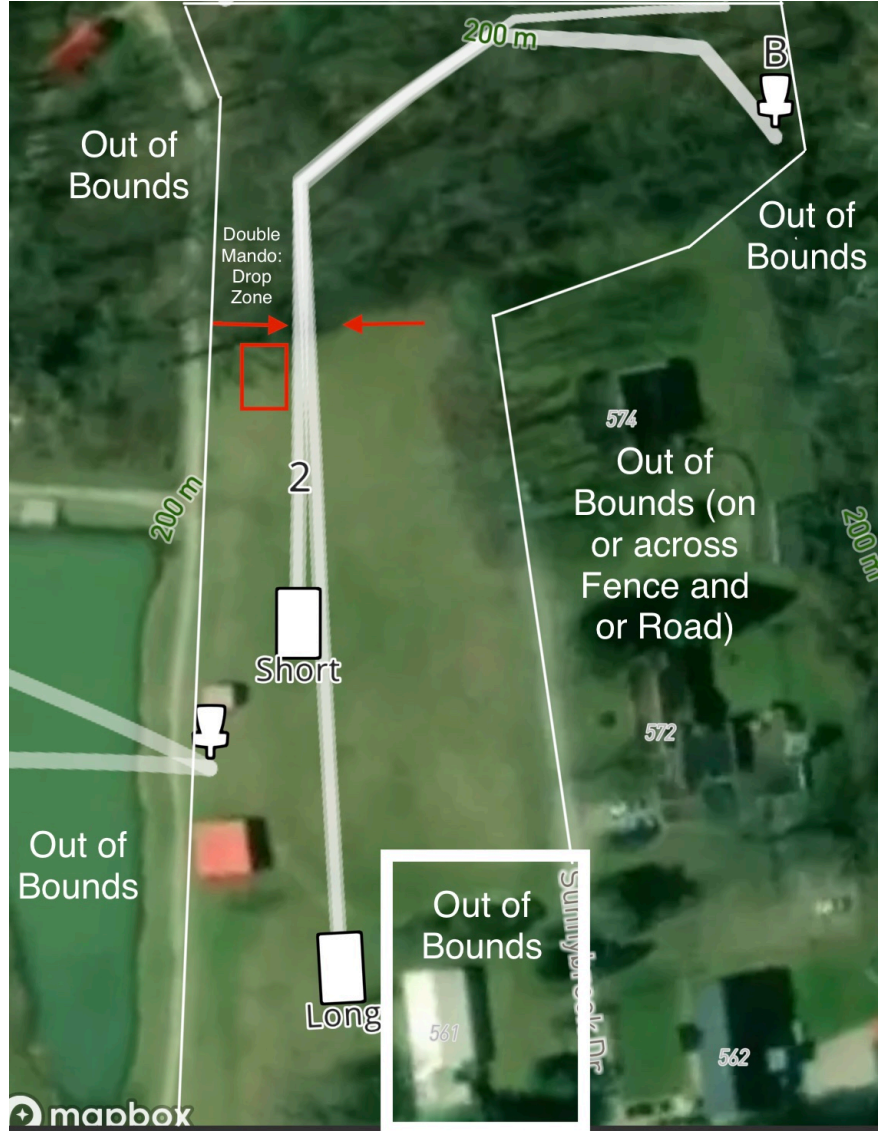


Hole 2: Long - Par 5 - 720 ft.
Short - Par 4 - 537 ft.

Sponsored By



Sponsored By



Hole 3: Long - Par 3 - 303 ft.
Short - Par 3 - 206 ft.

Sponsored By



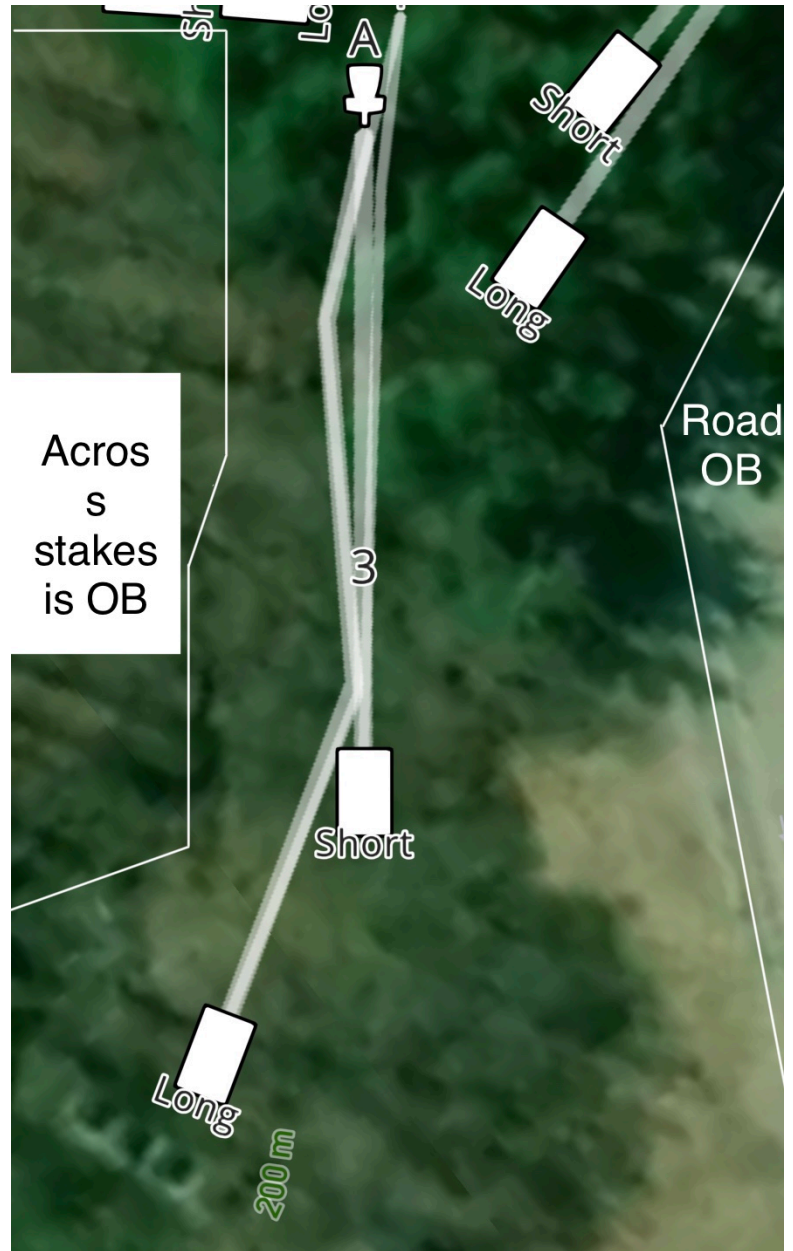
Sponsored By

**DIRTWORK
SOLUTIONS, LLC**
Demolition and Excavation Company
Licensed and Insured #WV059496

 **681-203-6985** 

dirtworksolutionswv@gmail.com

Sponsored By



Hole 4: Long - Par 3 - 223 ft.
Short - Par 3 - 166 ft.

Sponsored By



Sponsored By



Come home to
something
familiar.

WWW.HUSSONSPIZZA.COM

Sponsored By

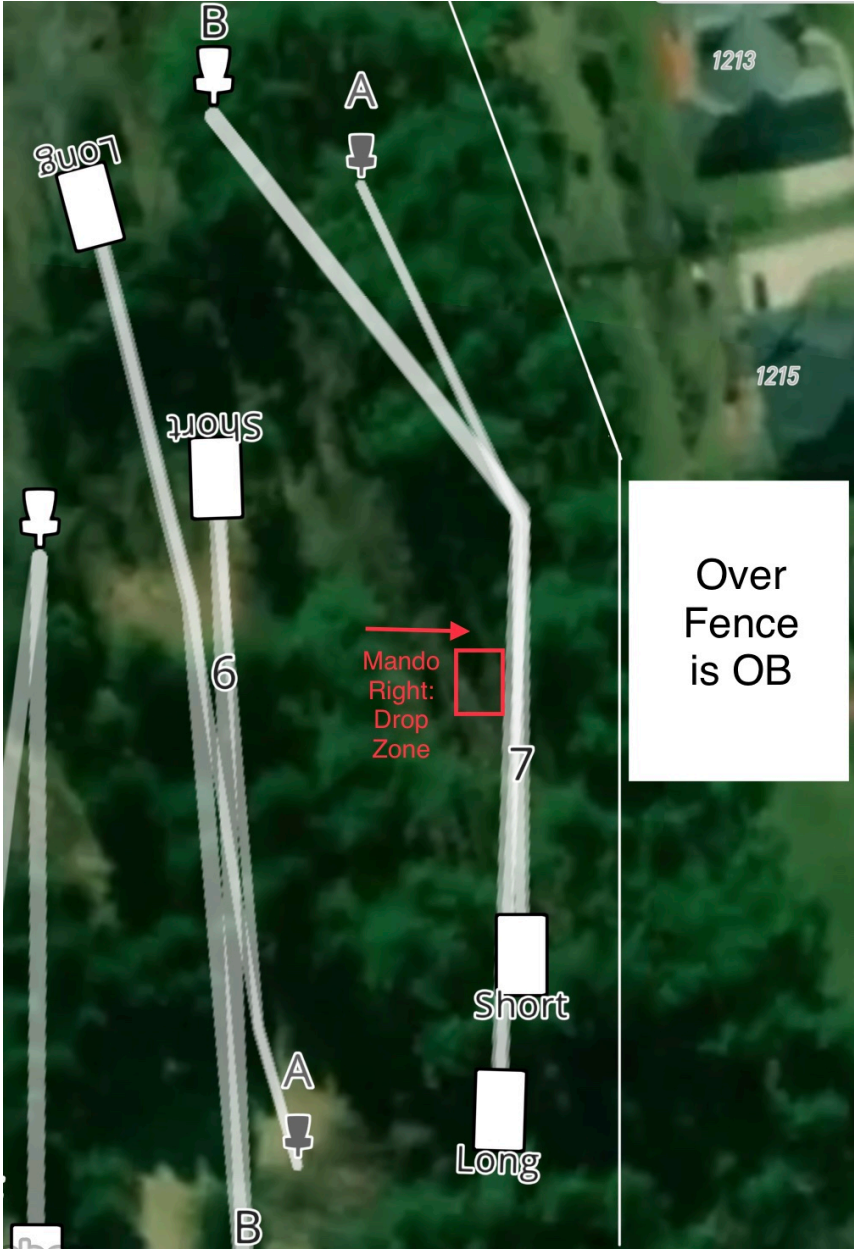
The advertisement has a red background. At the top, it says "Ferrell Concrete & Construction" in white. To the right is a silhouette of a concrete mixer truck. Below the name, it lists services: "Driveways & Sidewalks", "Patios & Porches", and "Subdivision Street Repair". At the bottom, there are two contact boxes: "Josh Ferrell 681-945-5200" and "Tony Ferrell 304-415-4450".



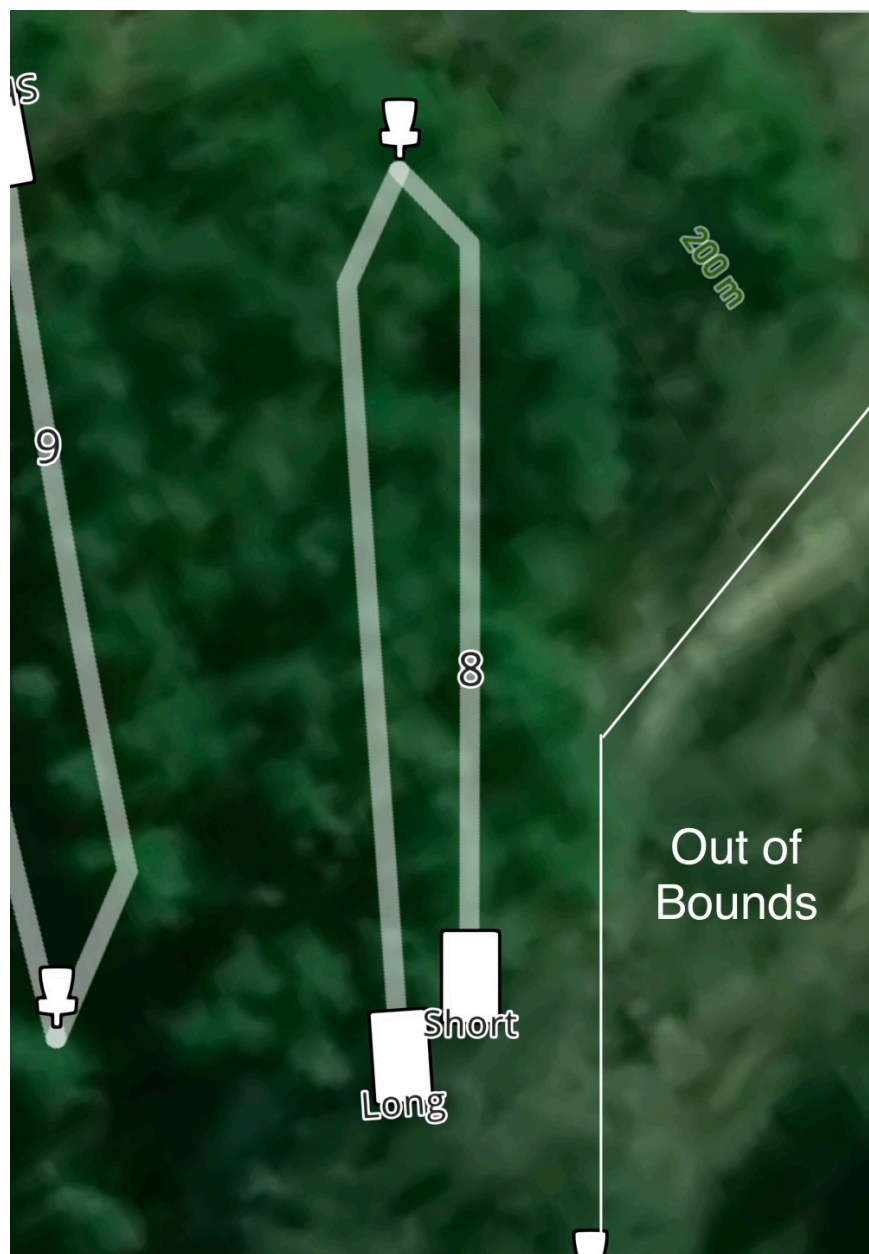
Hole 6: Long - Par 3 - 386 ft.
Short - Par 3 - 265 ft.
(A Pin)



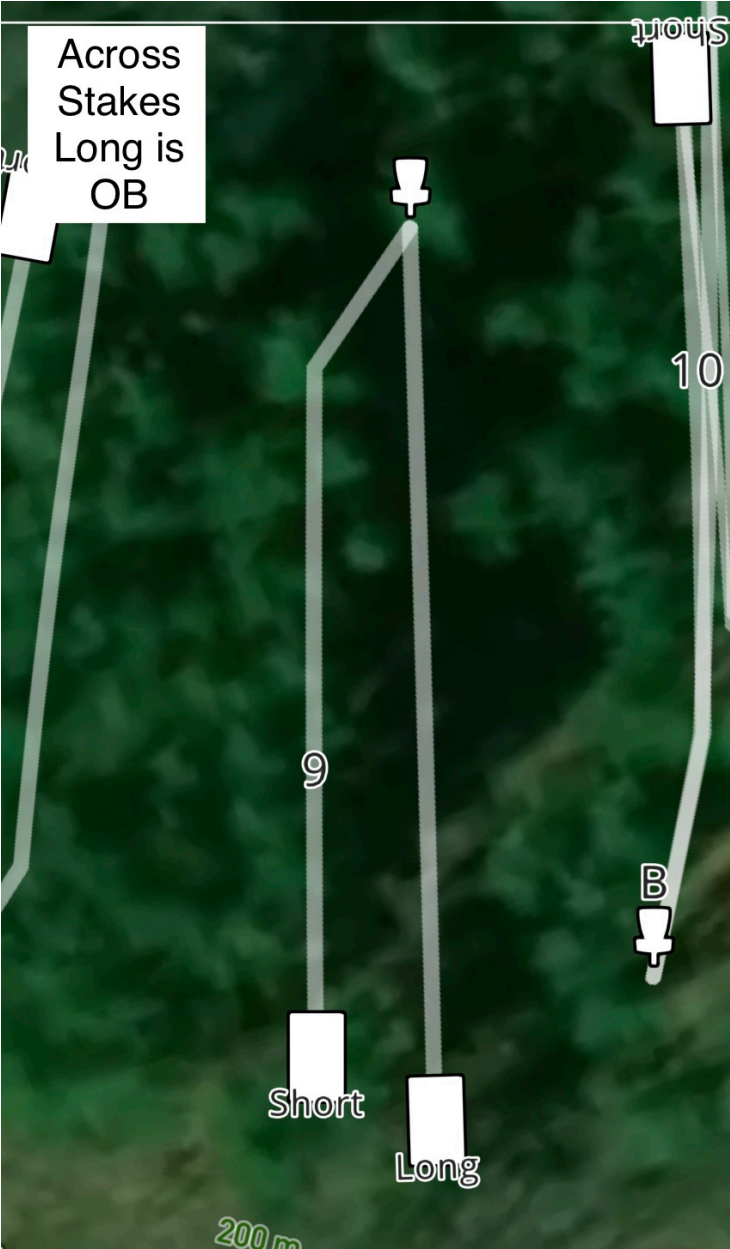
Hole 7: Long - Par 4 - 432 ft.
Short - Par 4 - 370 ft.



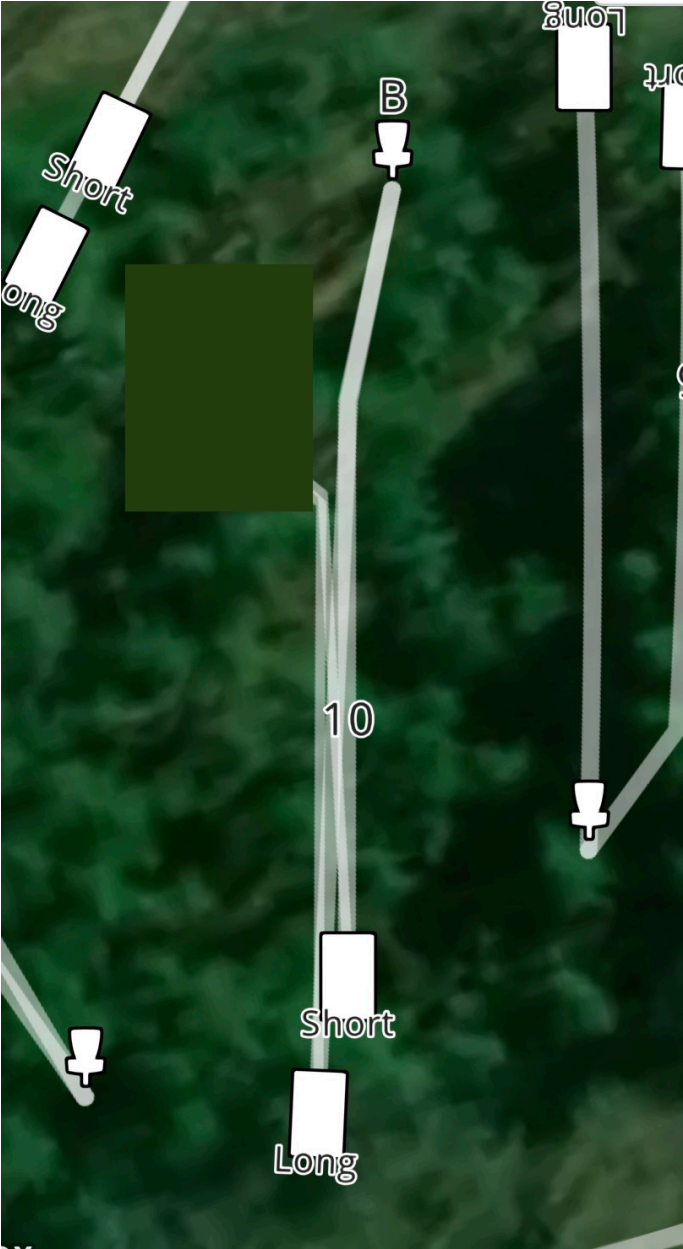
Hole 8: Long - Par 3 - 206 ft.
Short - Par 3 - 191 ft.



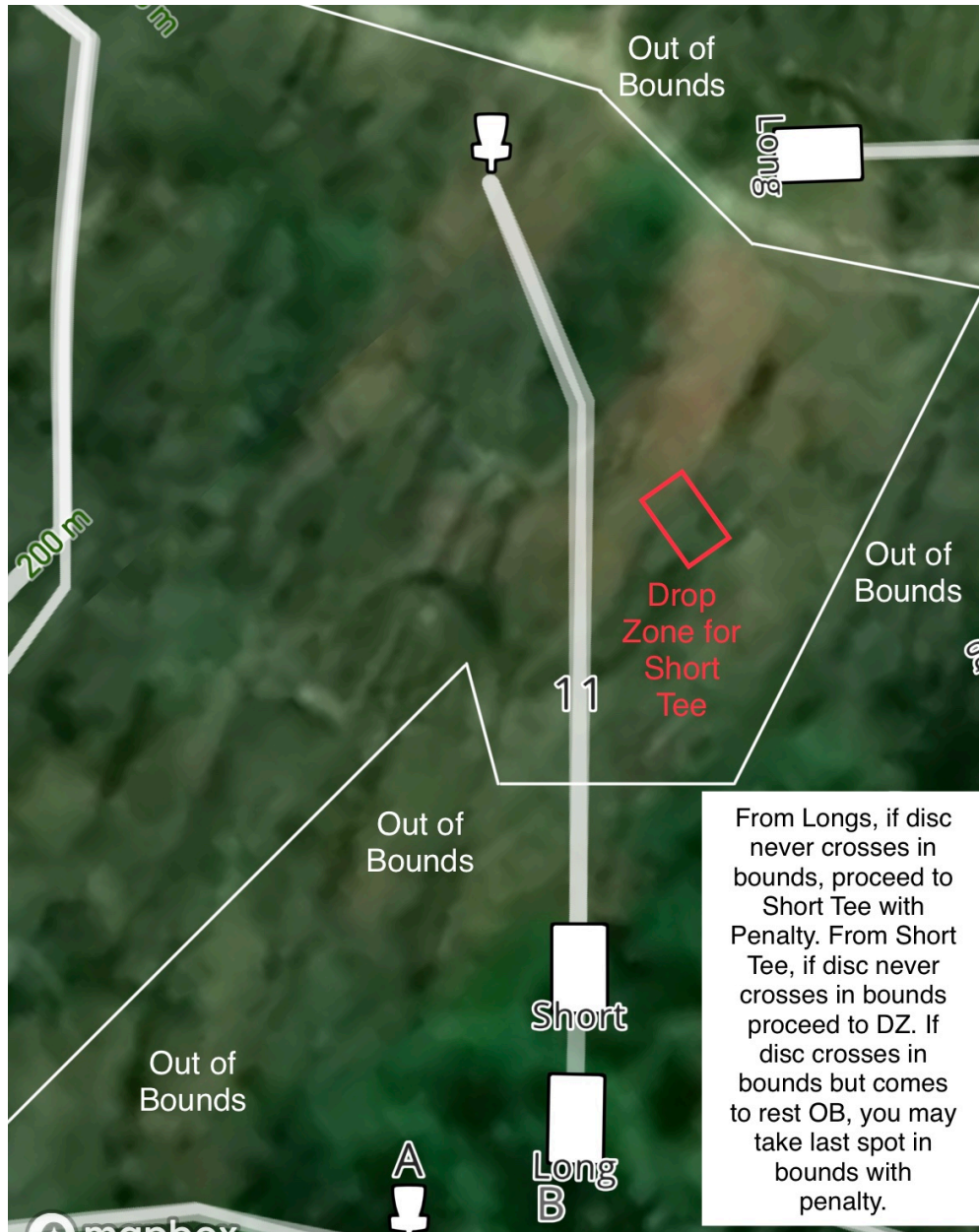
Hole 9: Long - Par 3 - 219 ft.
Short - Par 3 - 209 ft.



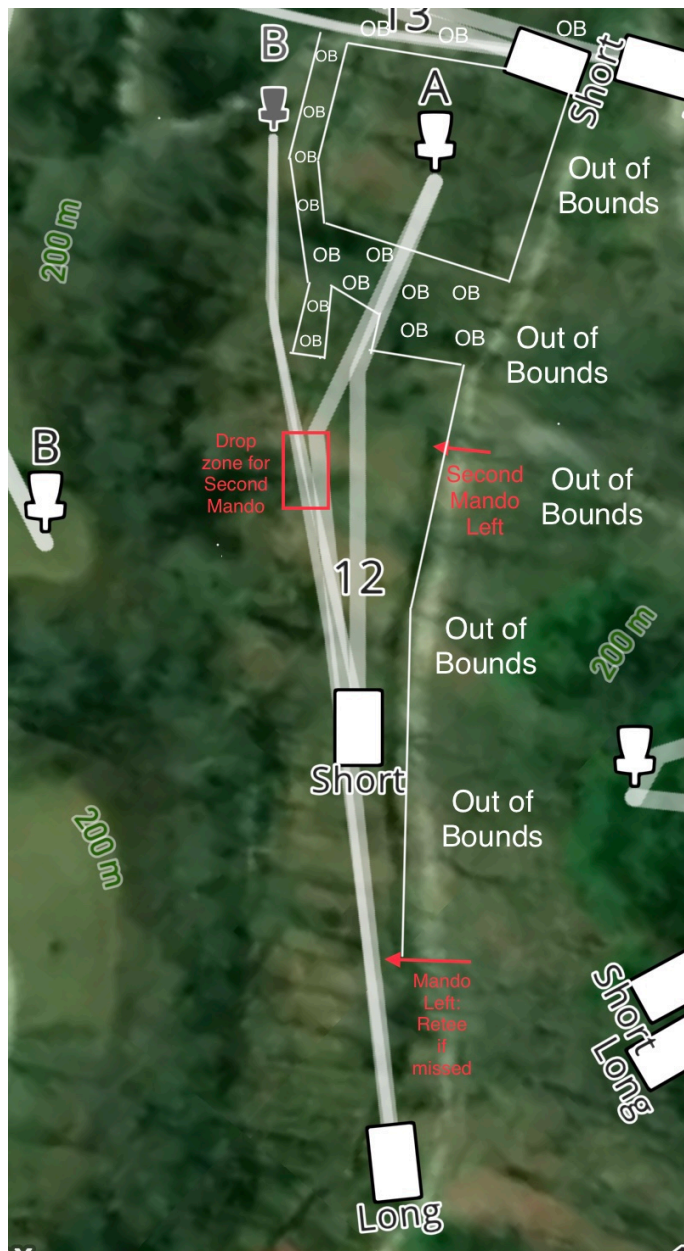
Hole 10: Long - Par 3 - 260 ft.
Short - Par 3 - 220 ft.



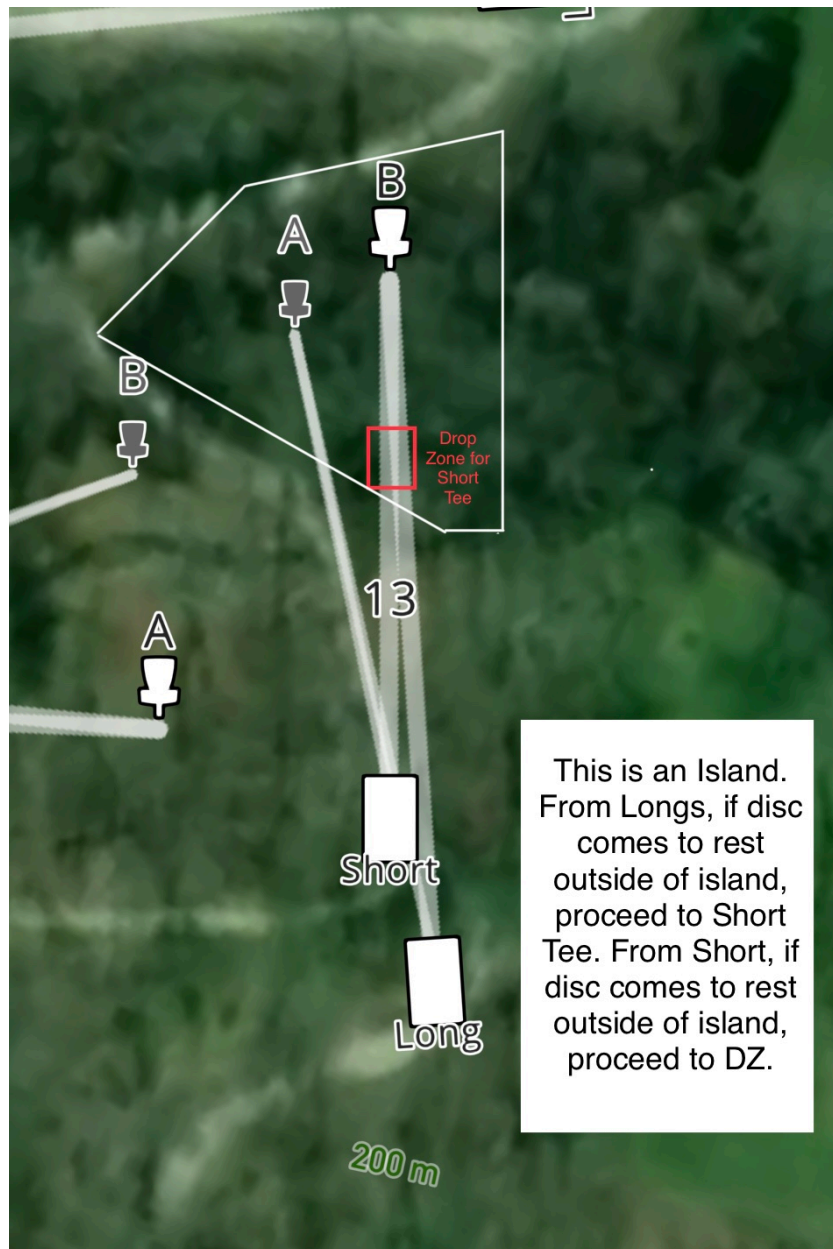
Hole 11: Long - Par 3 - 252 ft.
Short - Par 3 - 212 ft.



Hole 12: Long - Par 4 - 521 ft.
Short - Par 3 - 286 ft.



Hole 13: Long - Par 3 - 214 ft.
Short - Par 3 - 157 ft.
(A Pin)



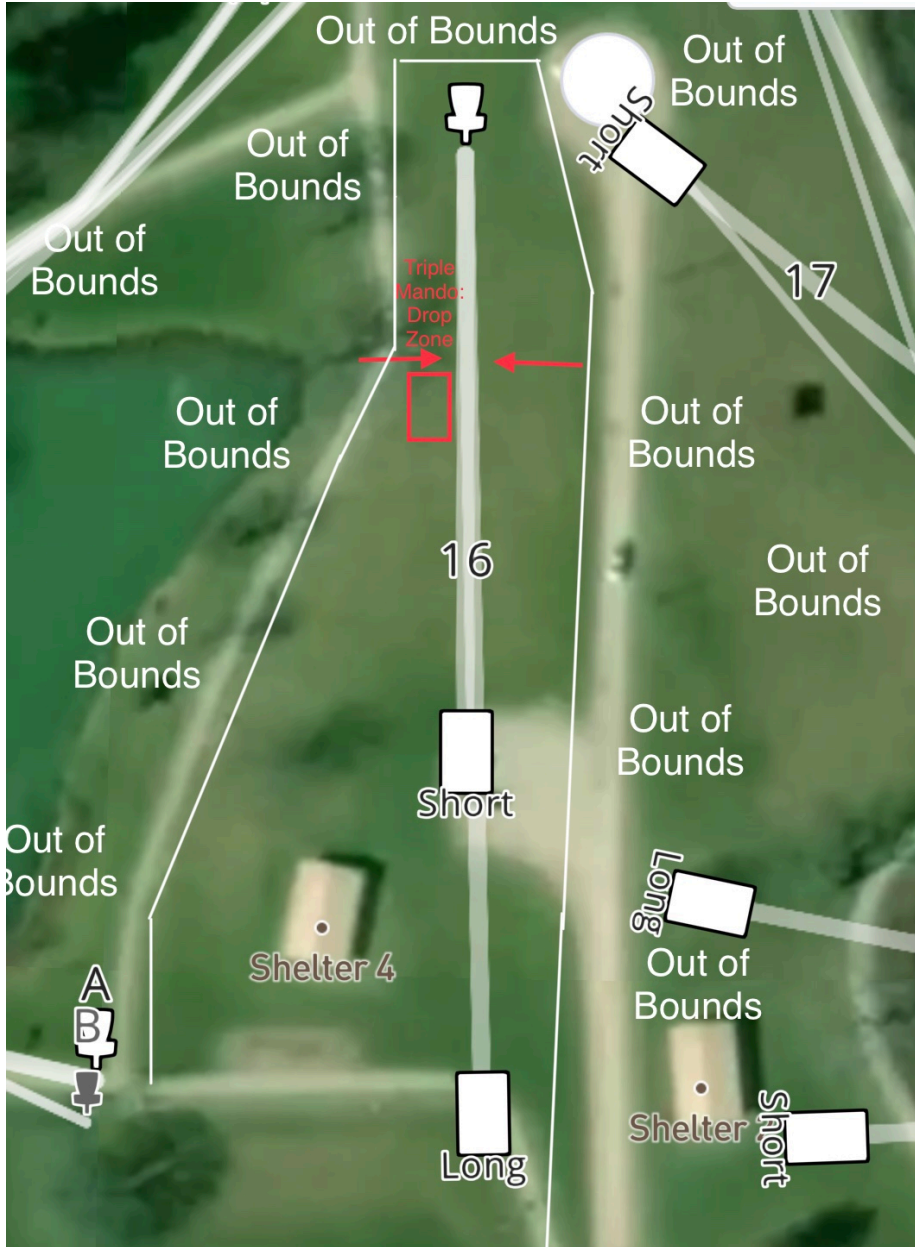
Hole 14: Long - Par 4 - 580 ft.
Short - Par 4 - 501 ft.



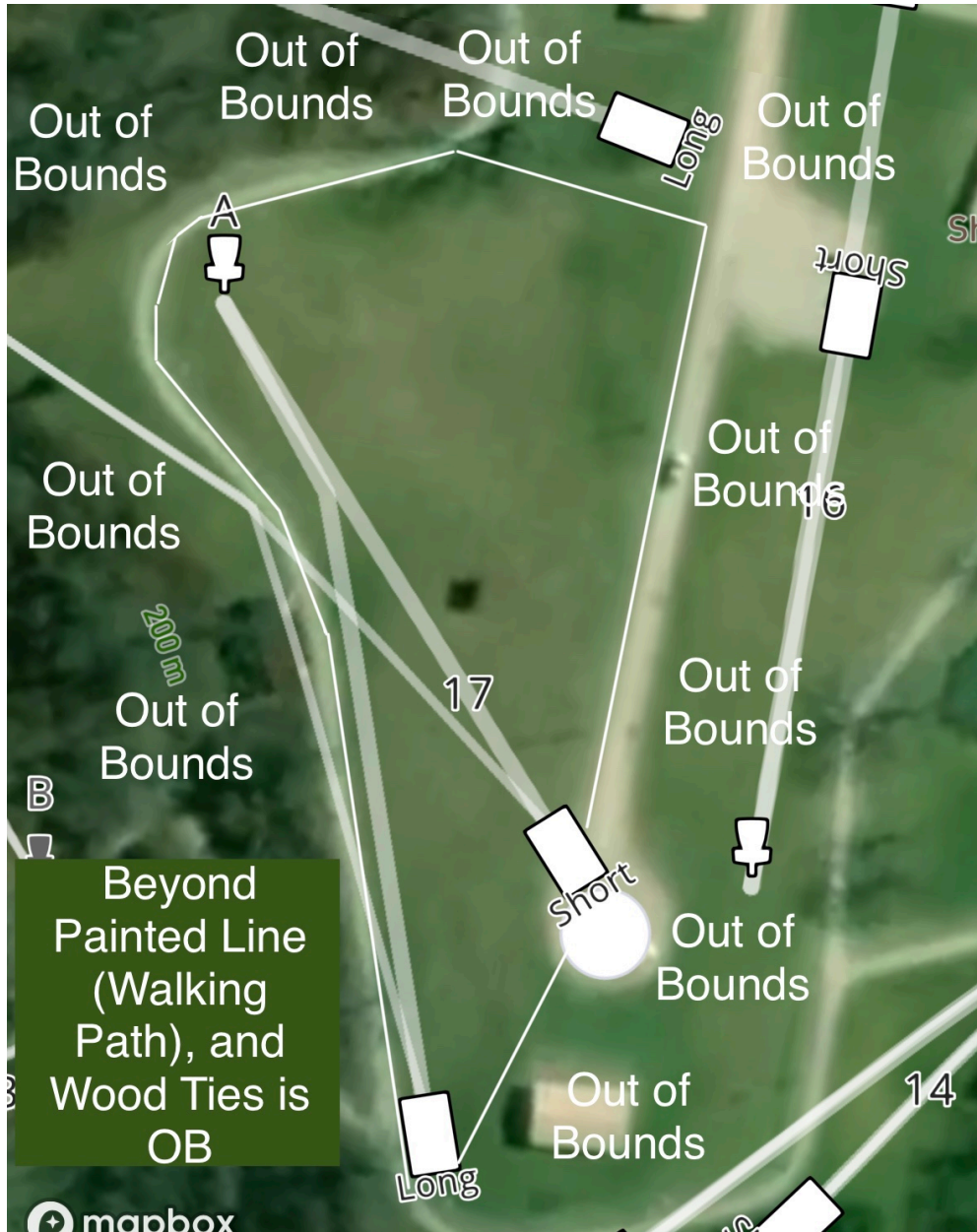
Hole 15: Long - Par 3 - 218 ft.
Short - Par 3 - 168 ft.



Hole 16: Long - Par 3 - 374 ft.
Short - Par 3 - 279 ft.



Hole 17: Long - Par 3 - 400 ft.
Short - Par 3 - 322 ft.



Hole 18: Long - Par 4 - 534 ft.
Short - Par 4 - 479 ft.



