



Caddybook





We're excited to welcome you to another edition of Minett Open!

Minett Open 2024 is a one day PDGA C-tier event consisting of 3 rounds x 13 holes played at an extended layout at Parc Um Belval in Sanem, Luxembourg.

The event is organized by Disc Golf Club Luxembourg according to the official PDGA rules with any special rules described in this caddybook.

Minett Open 2024 is also the third stop of the **4 Nations Cup** - a series of tournaments organized in France, Germany, Luxembourg and Belgium with competition between national teams.



Scoring. For scoring we'll be using PDGA Digital Scorecard (<https://www.pdga.com/apps/tournament/score/login>). Login: **M02024**

Groups. Round 1. - random groups, mixed divisions.

Round 2. and 3. - players grouped by scores within divisions.

Contests. CTP contest for all players who paid the contest entry fee on holes 3, 7 and 12 for the whole duration of the tournament.

Ties. Any ties at podium places will be resolved with sudden death playoff played at holes 1 and 7 in a loop.

TD - Nicolas Piron
E-mail: nicolaspiron94@yahoo.com





Layout. The tournament is played on an extended, 13 hole layout at DiscGolfPark in Parc Um Belval.

Teesign for each hole is included in this caddybook together with special rules applicable for particular hole.

There is a number of general special rules applicable to every hole unless specified differently:

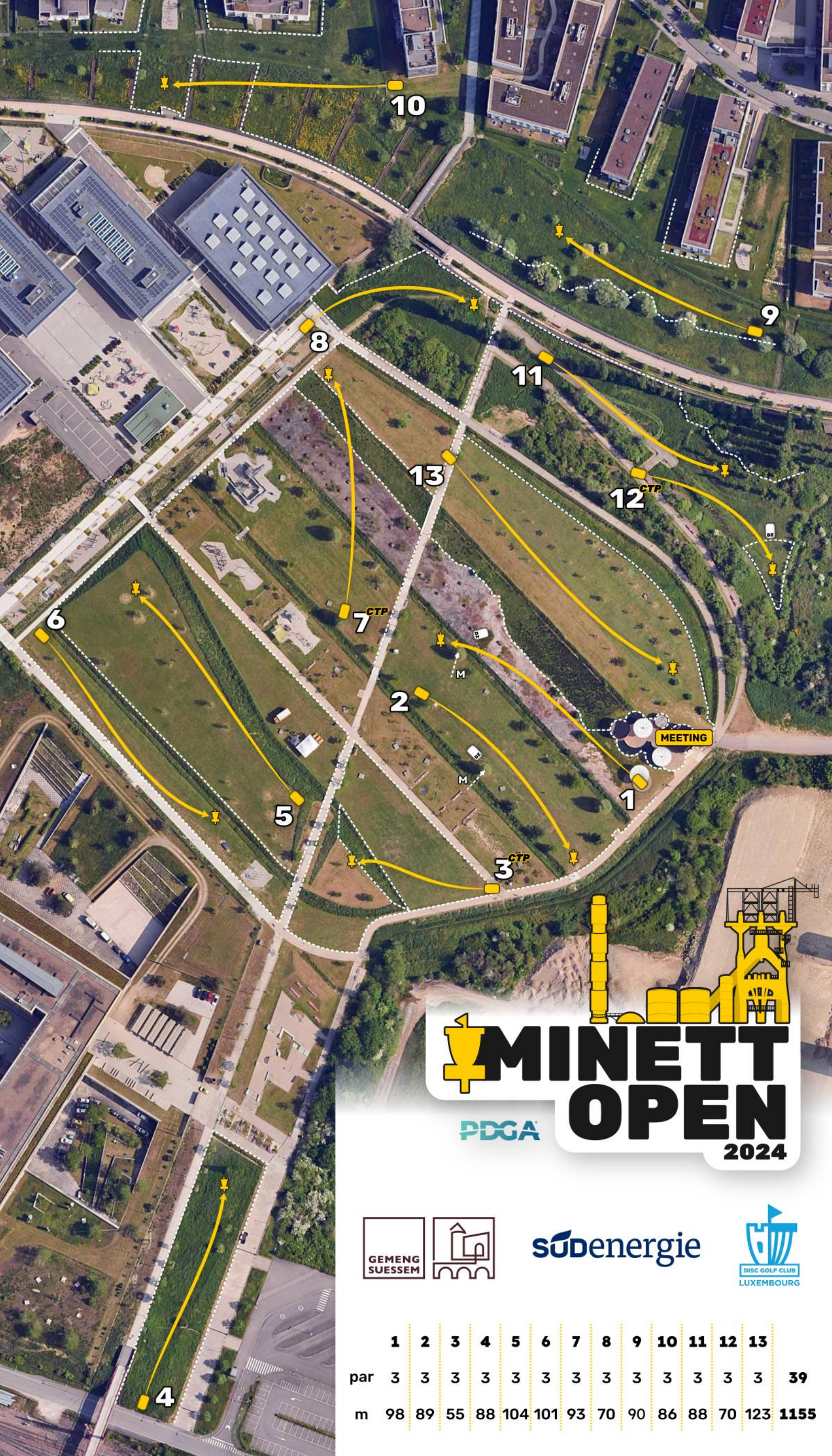
For each hole, except hole 11, fairway is delimited by concrete paths. Concrete paths and area behind them is considered out-of-bounds (OB).

The exception is teepad for each hole where teepad is placed on a concrete path.

For each hole, pavilion area (wooden platforms, top of buildings, top of roofs, pools) is considered OB. The exception is wooden platform where tee 1 is located.

Natural OB lines are not marked (concrete paths, stone surface, pavillion). Other limits of OB/Hazard (HZ) areas are marked with flags. There are no lines marked between flags (i.e. line goes straight between flags).

Remember: In case of doubt - throw provisional, and if OB/HZ is to close to call - rule in favour of player.



MINETT OPEN 2024

PDGA



SUDENERGIE



| | 1 | 2 | 3 | 4 | 5 | 6 | 7 | 8 | 9 | 10 | 11 | 12 | 13 | |
|-----|----|----|----|----|-----|-----|----|----|----|----|----|----|-----|------|
| par | 3 | 3 | 3 | 3 | 3 | 3 | 3 | 3 | 3 | 3 | 3 | 3 | 3 | 39 |
| m | 98 | 89 | 55 | 88 | 104 | 101 | 93 | 70 | 90 | 86 | 88 | 70 | 123 | 1155 |

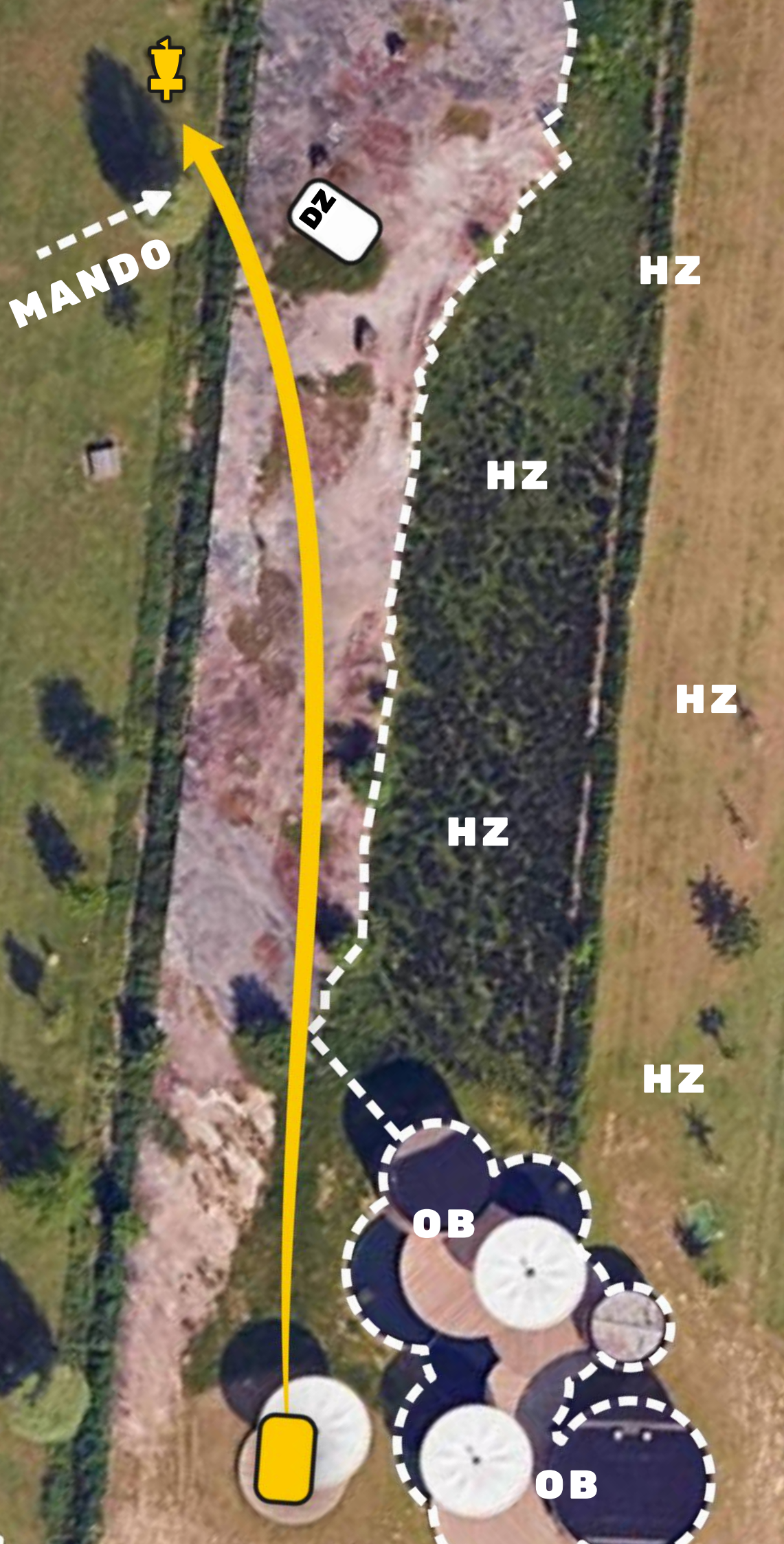
1

par 3

98m

HZ right of the edge of the stone.

Mando right of the marked tree. **DZ** for the mando next to the stone block closest to the basket.



2

par 3

89m

OB long of the basket at the path and behind.

Mando left of the marked tree. DZ for the mando marked at a concrete patch.



südenergie



3

par 3

55m

CTP

HZ marked in the high grass on the slopes of the hill and in the ditch.

(only discs in safe area count for CTP)



südenergie



5

par 3

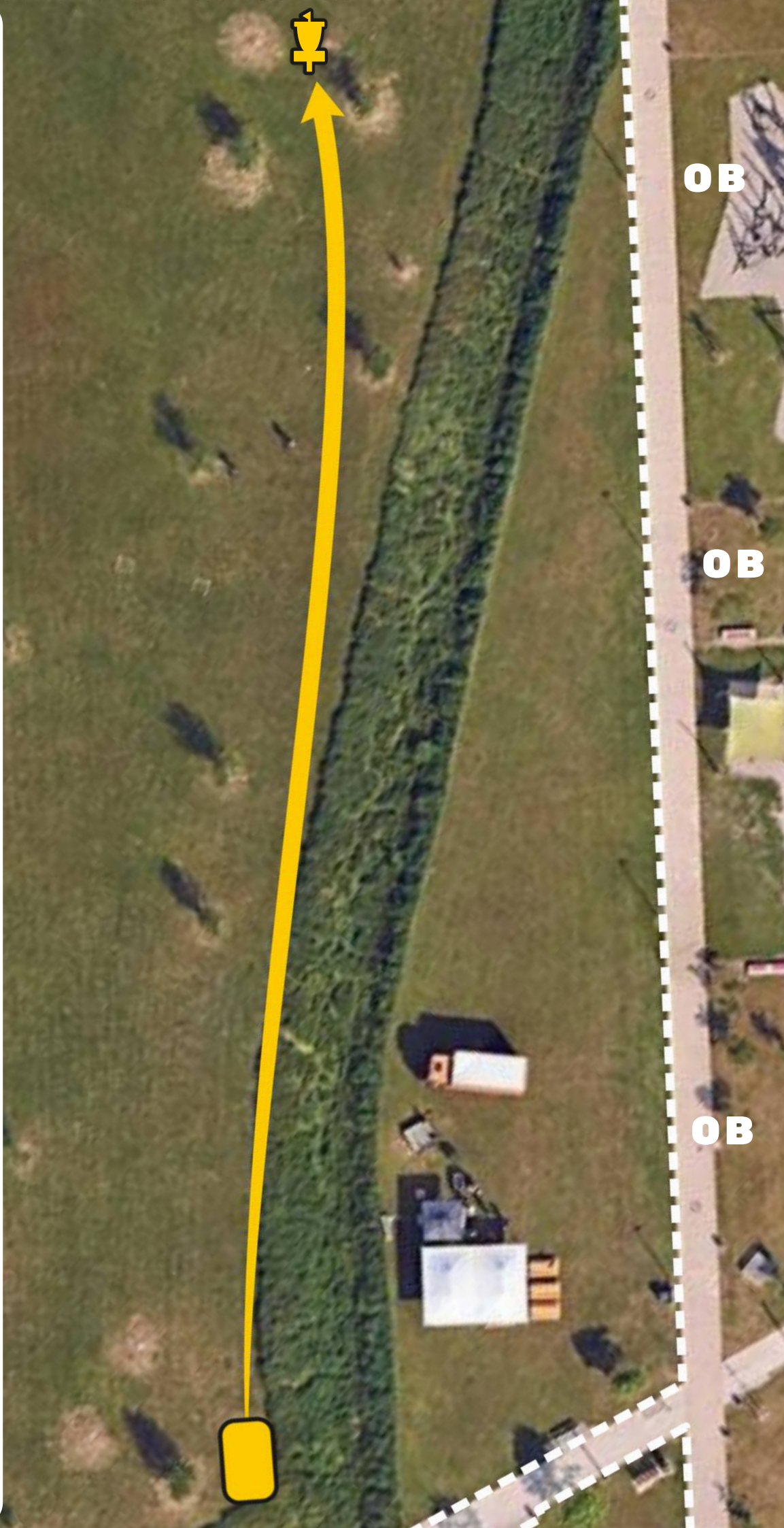
104m

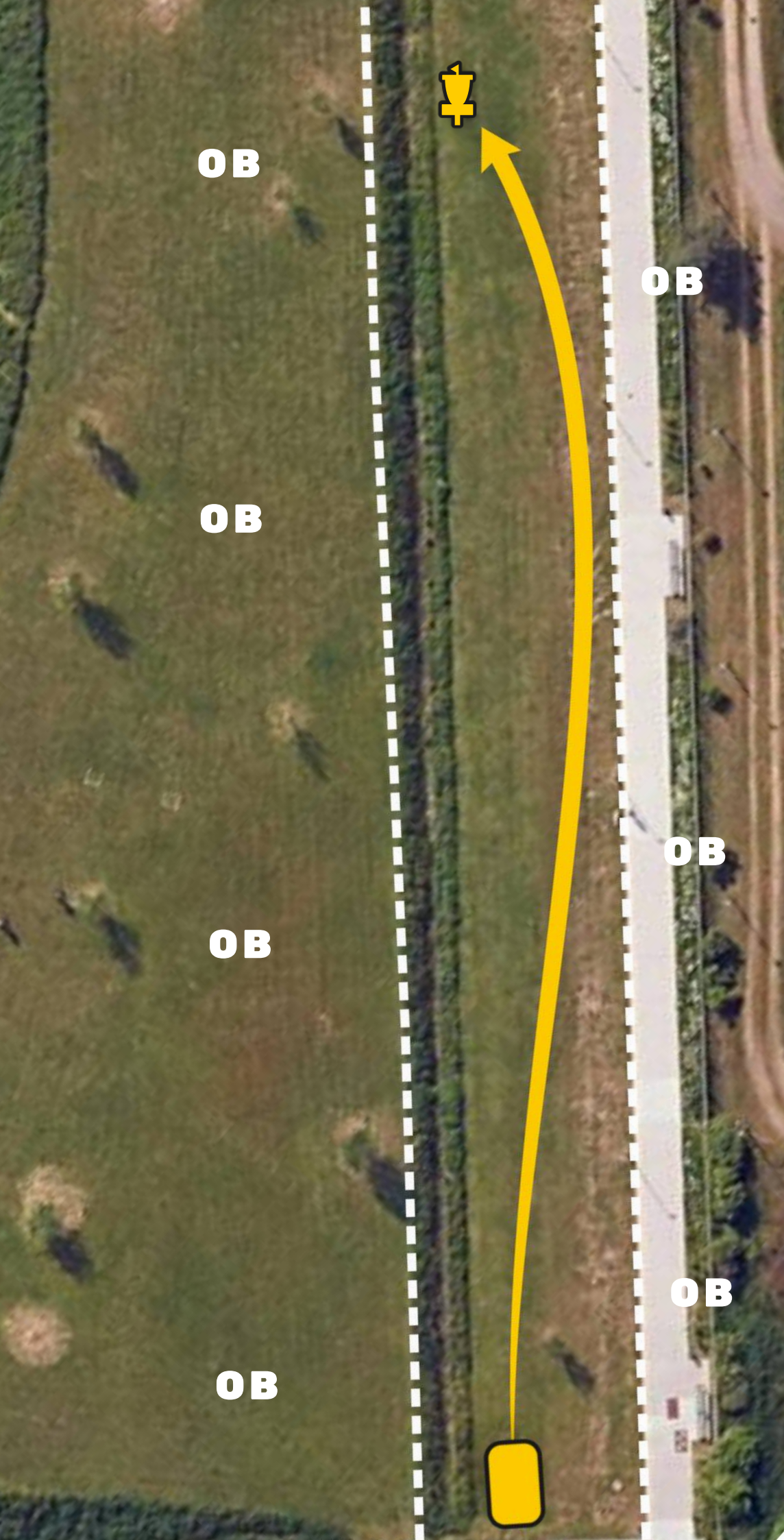
OB on the path right of the basket and behind the path.

OB left of the basket at the edge of high grass and behind.



südenergie






par 3

101m

OB left of the basket marked at the edge of high grass behind the ditch.

OB right of the basket on concrete path and behind.



7

par 3

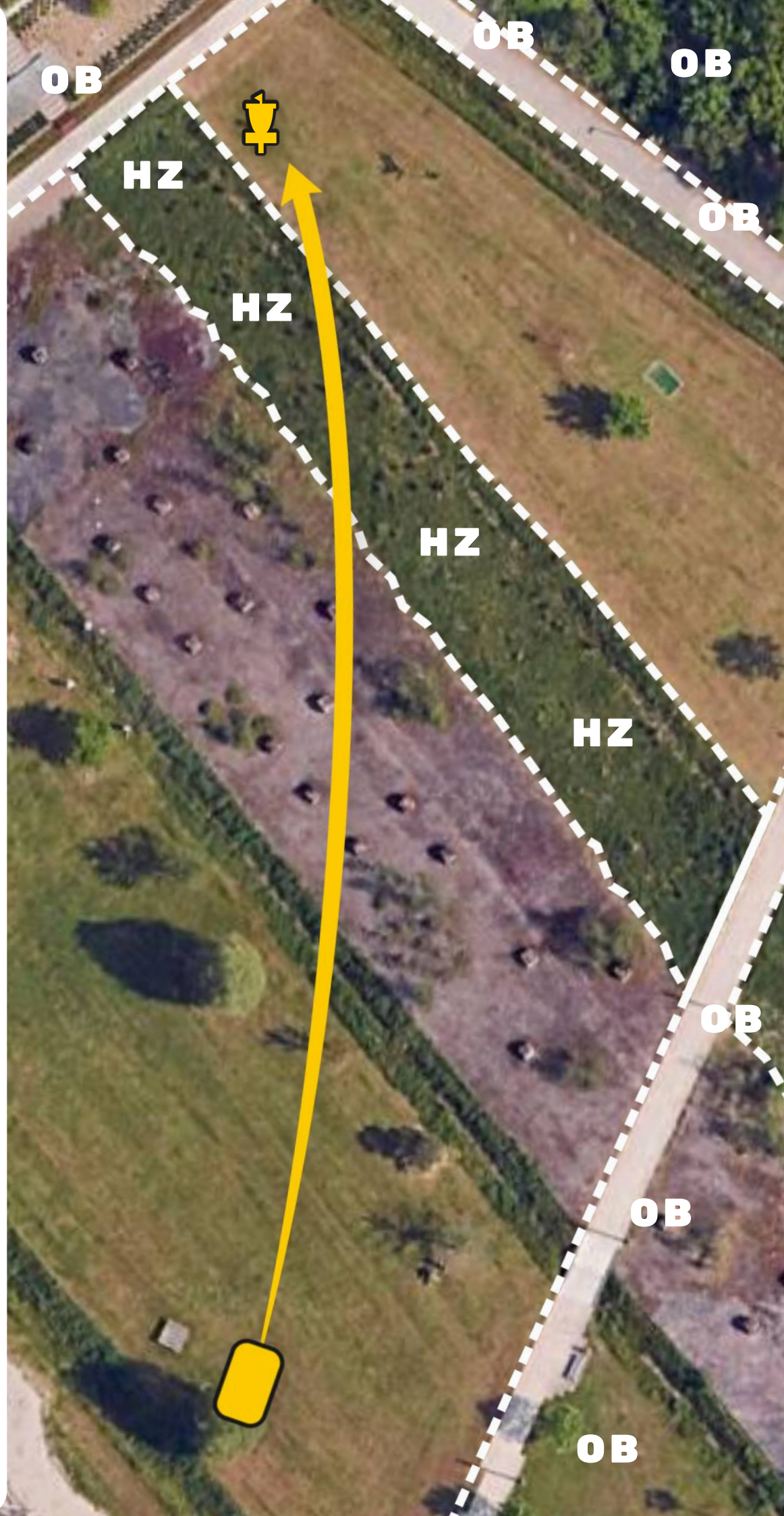
93m

GTP

OB long and left of the basket on concrete path and behind it.

HZ in the high grass - between the edge of stone and marked line at the edge of high grass.

(only discs in safe area count for CTP)



südennergie



8

par 3

70m

OB long of the basket at the wall and behind it.

OB right of the basket on the concrete path and behind it.

OB in the ditch on the left.

After you finish this hole, please stay to spot for the next group.



südenergie



9

par 3

90m

OB left of the basket along the stream as well as the brush and behind, marked with red flags.

OB in the gardens of the residential buildings.



südenergie



10

par 3

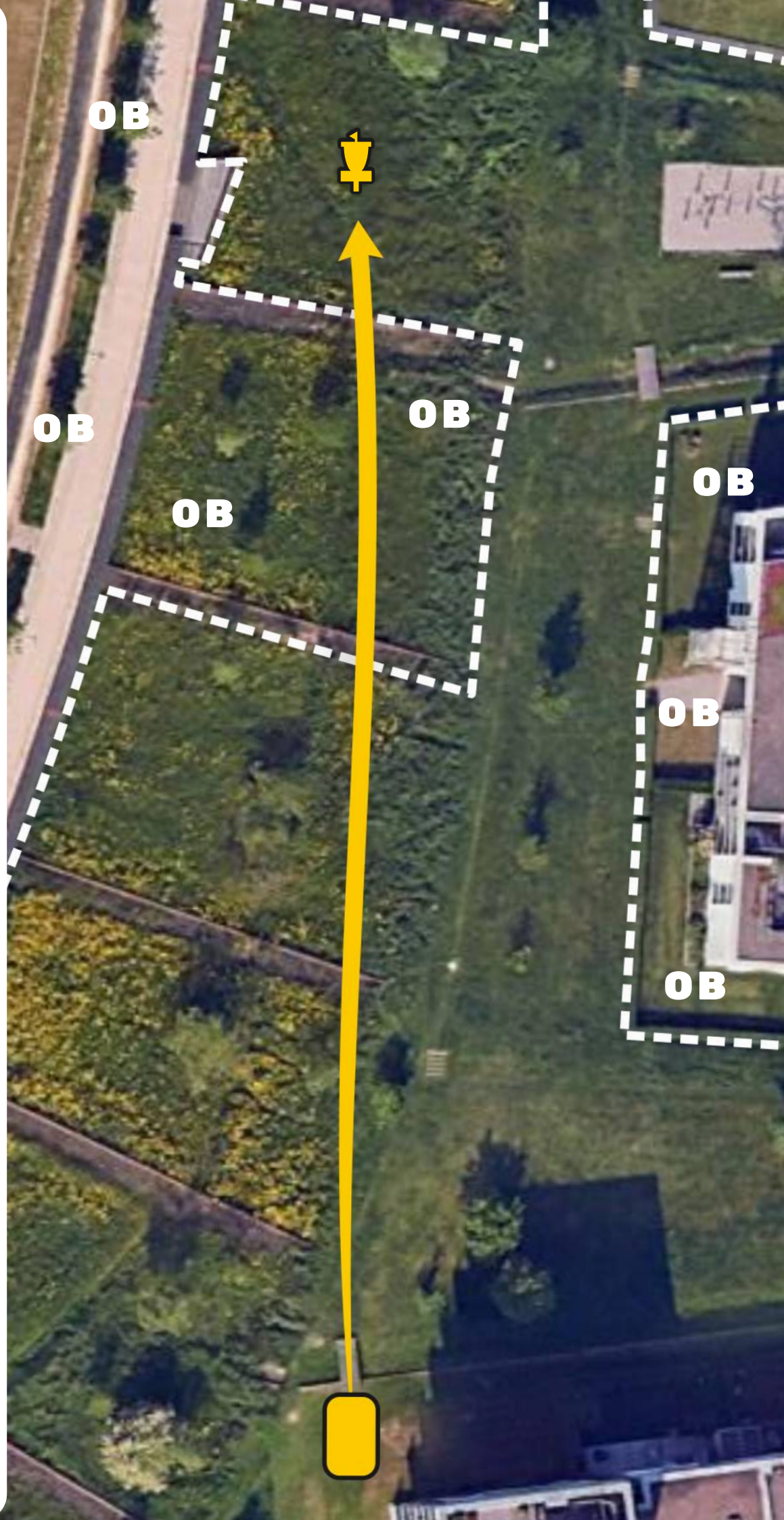
86m

OB left of the basket on the wall and behind it, including the small balcony next to the basket and under it.

OB on and between two walls in front of the basket. Right edge of the OB area is marked.

OB long of the basket.

OB in the gardens of the residential buildings.



südennergie



11

par 3

88m

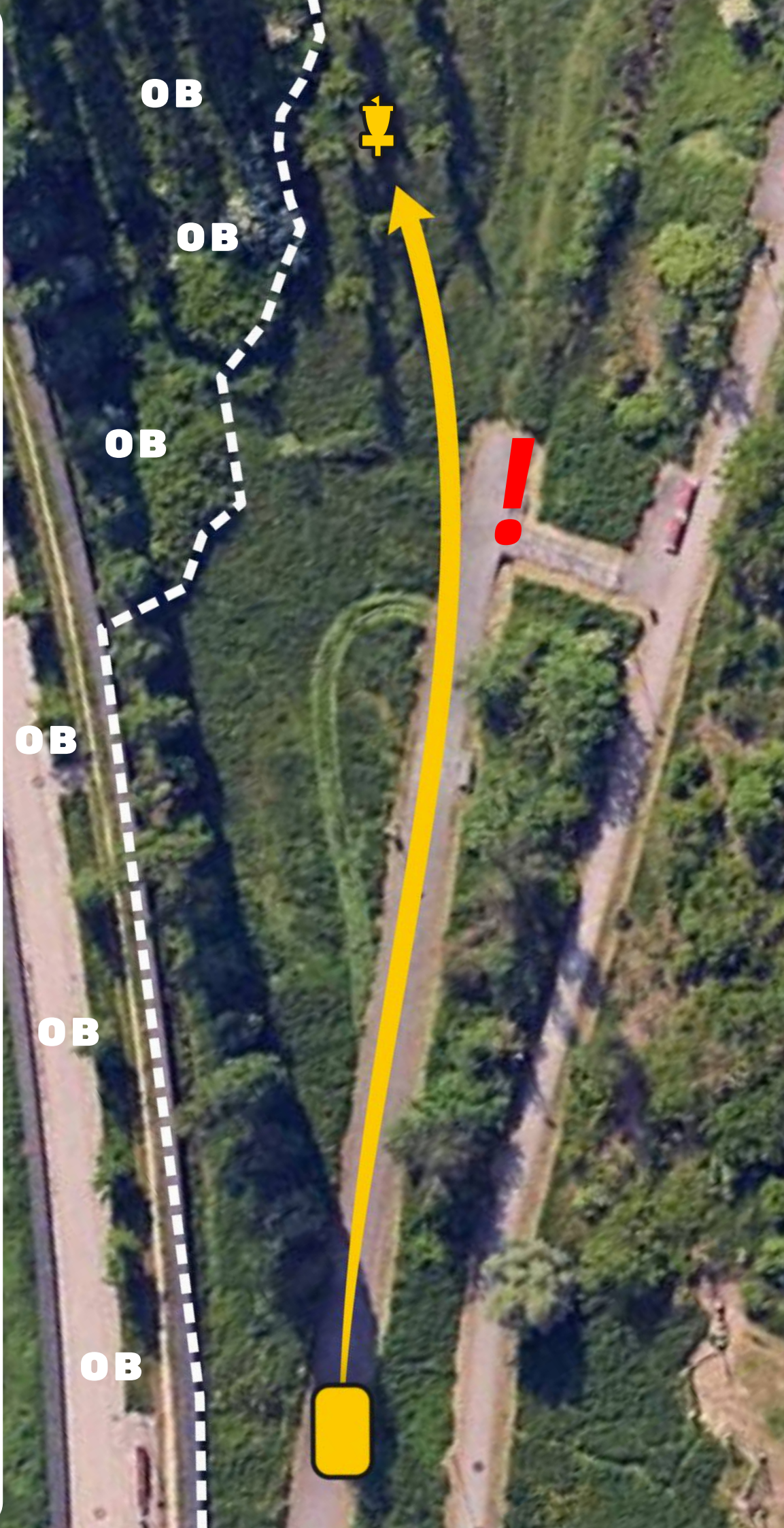
OB left of the basket on the concrete wall and behind it.

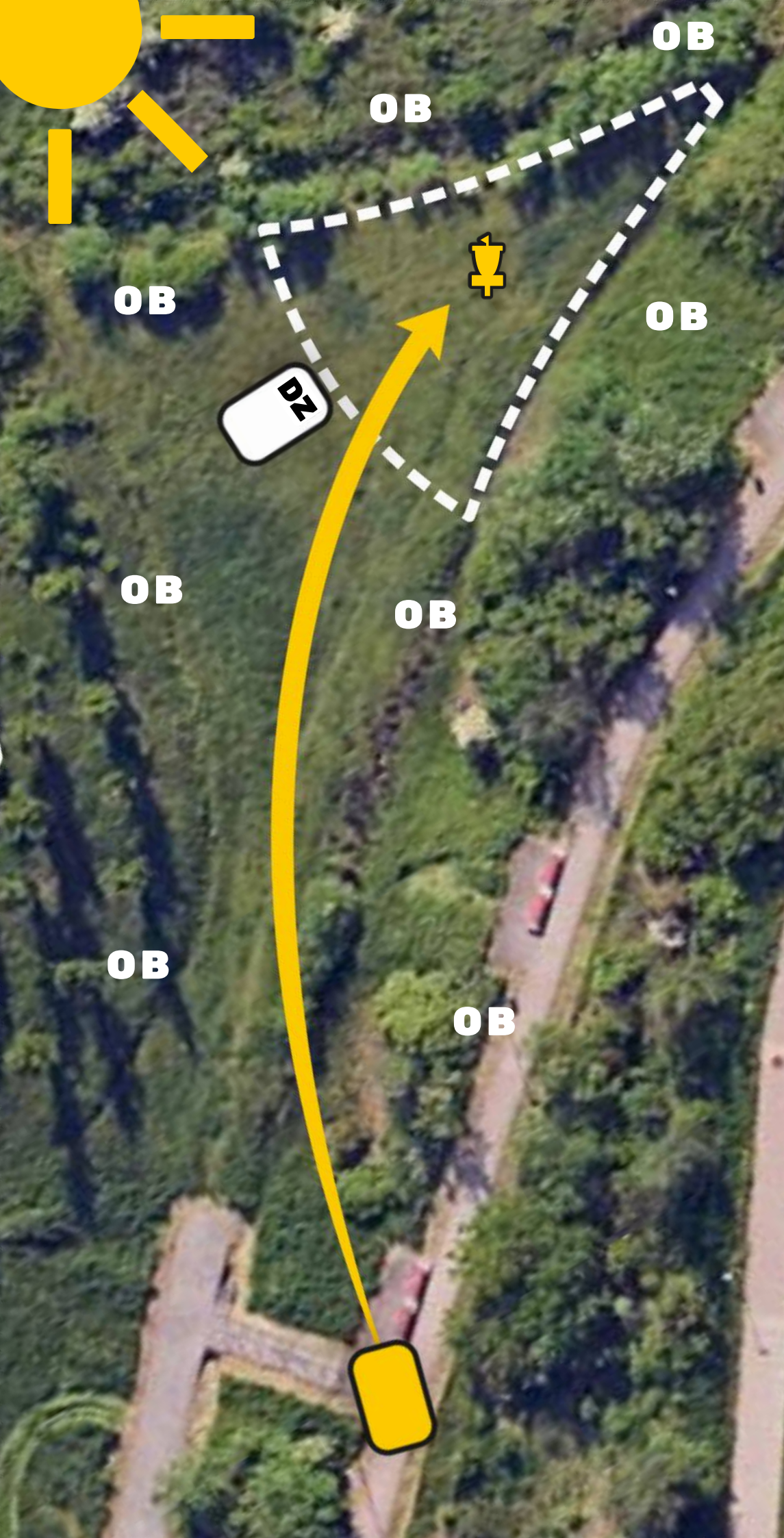
OB left of the basket in the rough (marked).

Before throwing please make sure, that no players on hole 12 are in the way of your throw.



südennergie





12

par 3

70m

CTP

Island Green:

Any throw from the Tee must come to rest on the Island Green to be able to mark on the Island Green.

Throws from the Tee that don't come to rest on the Island Green must proceed to the Drop Zone with a penalty throw.

All other throws use normal OB rules.

(only discs in safe area count for CTP)



südennergie



13

par 3

123m

OB left and long of the basket at the edge of the hill (marked).

OB right of the basket on the stone and behind.





Rue de la Poste, Belvaux (free)



Rue Wassertraap, Belvaux (free)



MEETING

Rue de l'Usine, Belvaux (free)



Lycee Bel-Val, Belvaux (paid)

