



THROWVEMBER

CADDY



BOOK 2024

LA MIRADA REGIONAL PARK
NOVEMBER 2 & 3, 2024

2 DAY PDGA B-TIER TOURNAMENT

TOURNAMENT DIRECTOR:
RYAN REILLY (562) 397-7731

CALIFORNIA DISC GOLF SERIES DIRECTOR:
ANDREW SALAZAR (562) 447-9525

QUESTIONS, CONCERNS & COMMENTS
CALIFORNIADISCGOLF SERIES@GMAIL.COM

INFO & REGISTRATION
WWW.DISCGOLFSCENE.COM

2 METER RULE IS IN EFFECT

PDGA ACCESS CODE:
TV24



THROWVEMBER

PRESENTED BY
Ruby Red's
BBQ
est. 1990

BACKSIDE - PAR 60

LAKE SIDE - PAR 57





LAKESIDE HOLE 1

PAR 3 - 360 ft.

- hole 2 basket position / normal hole 2 tee pad
- MANDOS** **DOUBLE MANDO** - Throw must pass between both marked trees
(if either mando is missed, proceed to the marked drop zone between the trees with 1 stroke penalty)
- O.B.** asphalt and cement sidewalk and beyond on right side of the fairway + marked OB line and beyond in hole #4's fairway
**sidewalk and gutters crossing through the fairway are inbounds
 (play your next shot 1 meter inbounds from where the disc crossed OB with 1 stroke penalty)*



LAKESIDE HOLE 2

PAR 3 - 320 ft.

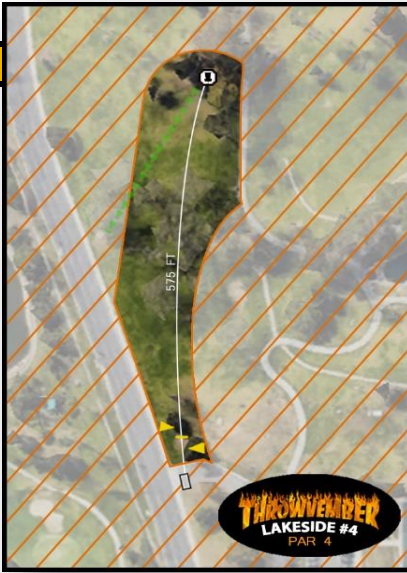
- long left hole 3 basket position w/ raised pyramid / normal hole 3 tee pad
- MANDOS** **MANDO** - Throw must pass on the left side of the marked tree
(if mando is missed, proceed to the drop zone with 1 stroke penalty)
- O.B.** sidewalk and beyond on left side of the fairway & past the basket and marked OB line and beyond on right side of the fairway
(play your next shot 1 meter inbounds from where the disc crossed OB with 1 stroke penalty)
- * after playing hole #2, please proceed to hole #3's teepad thru the parking lot as shown by the green arrows on the map**



LAKESIDE HOLE 3

PAR 3 - 270 ft.

- Island basket position / alt. sidewalk tee pad on the island
- MANDOS** **MANDO** - Throw must pass on the right side of the marked tree
(if mando is missed, proceed to the drop zone with 1 stroke penalty)
- O.B.** sidewalk and beyond on left side of the fairway & parking lot to the right plus driveway and beyond past the basket
(play your next shot 1 meter inbounds from where the disc crossed OB with 1 stroke penalty)



LAKESIDE HOLE 4

PAR 4 - 575 ft.

MANDOS

extra long basket position (hole 5 right position)
 alternate hole 4 marked asphalt tee pad at the driveway entrance
DOUBLE MANDO - Throw must pass between both marked trees
 (if either mando is missed, proceed to the drop zone tee pad between
 the trees with 1 stroke penalty)

O.B. sidewalk and beyond on left side of the fairway + all marked OB lines and beyond
 & asphalt sidewalk and beyond on right side of the fairway
 (play your next shot 1 meter inbounds from where the disc crossed OB
 with 1 stroke penalty)

*** after playing hole #4, please proceed to hole #5's tee pad as shown by
 the green arrows on the map**



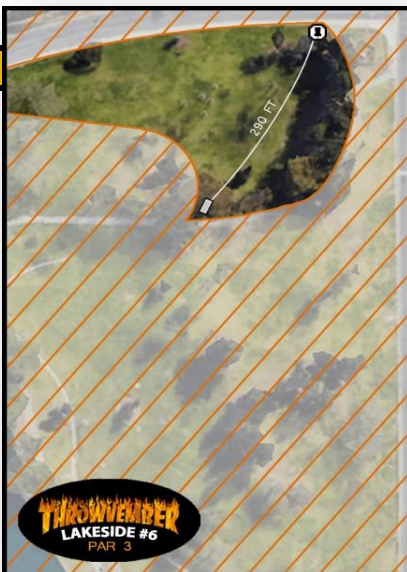
LAKESIDE HOLE 5

PAR 3 - 295 ft.

MANDOS

left basket position in palms / normal hole 5 tee pad
 NONE

O.B. sidewalk and beyond on left side of the fairway + all marked OB lines and beyond
 & asphalt sidewalk and beyond on right side of the fairway
 (play your next shot 1 meter inbounds from where the disc crossed OB
 with 1 stroke penalty)



LAKESIDE HOLE 6

PAR 3 - 290 ft.

MANDOS

right corner basket position with elevated pole / normal hole 6 tee pad
 NONE

O.B. sidewalk and beyond past the basket + asphalt sidewalk and beyond on
 right side of the fairway + OB line and beyond to the left of the tee pad
 (play your next shot 1 meter inbounds from where the disc crossed OB
 with 1 stroke penalty)



LAKESIDE HOLE 7

PAR 3 - 430 ft.

- MANDOS** long basket position in the palms / normal hole 7 sidewalk tee pad
MANDO - Throw must pass on the left side of the first marked tree
(if mando is missed, proceed to the drop zone with 1 stroke penalty)
- O.B.** street and beyond on left side of the fairway + asphalt sidewalk
 and beyond on right side of the fairway + OB lines and beyond
*(play your next shot 1 meter inbounds from where the disc crossed OB
 with 1 stroke penalty)*



LAKESIDE HOLE 8

PAR 3 - 230 ft.

- MANDOS** short dogleg left basket position /normal hole 8 tee pad
MANDO - Throw must pass on the right side of the marked tree
(if mando is missed, proceed to the drop zone with 1 stroke penalty)
- O.B.** street and beyond behind the tee pad + sidewalk and beyond on the right
 and OB line and beyond down the hill in hole #10's fairway
*(play your next shot 1 meter inbounds from where the disc crossed OB
 with 1 stroke penalty)*



LAKESIDE HOLE 9

PAR 3 - 310 ft.

- MANDOS** straight basket position / normal hole 9 tee pad
MANDO NONE
- O.B.** all sidewalks and beyond + marked OB line and beyond to the cement gutter
 dividing the fairway for hole 10 + OB line and beyond left of the basket
*(play your next shot 1 meter inbounds from where the disc crossed OB
 with 1 stroke penalty)*



LAKESIDE HOLE 10

PAR 3 - 330 ft.

- MANDOS** long right basket position / normal hole 10 sidewalk tee pad
MANDO - Throw must pass on the left side of the marked tree
(if mando is missed, proceed to the drop zone with 1 stroke penalty)
- O.B.** gutter and beyond on right side of the fairway + marked OB line and beyond on left side of the fairway and past the basket
(play your next shot 1 meter inbounds from where the disc crossed OB with 1 stroke penalty)
**if tee shot never crosses inbounds, proceed to the drop zone with 1 stroke penalty*



LAKESIDE HOLE 11

PAR 3 - 250 ft.

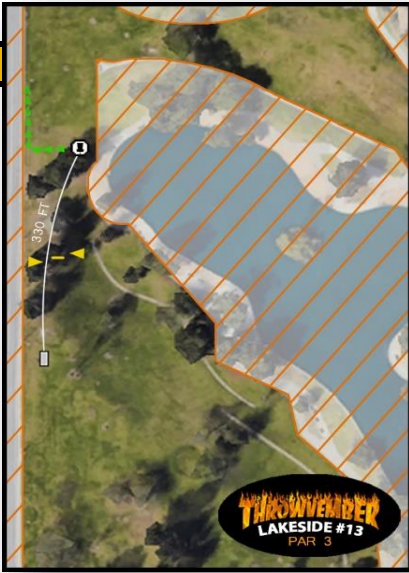
- MANDOS** right basket position up the hill past the trees / alt. sidewalk hole 11 tee pad
NONE
- O.B.** gutter and beyond toward the lake up to the marked OB line then sidewalk and beyond + marked OB line and beyond toward the lake (hole #10's green area)
(play your next shot 1 meter inbounds from where the disc crossed OB with 1 stroke penalty)
**re-tee if your tee shot never crosses inbounds*



LAKESIDE HOLE 12

PAR 3 - 370 ft.

- MANDOS** mid basket position past the palm trees just over the hill / normal hole 12 tee pad
NONE
- O.B.** curb / street and beyond on left side of the fairway + sidewalk and beyond on right side of the fairway near the lake up to the maked OB line then gutter and beyond and OB line and beyond in hole #10 & 11's fairways
(play your next shot 1 meter inbounds from where the disc crossed OB with 1 stroke penalty)



LAKESIDE HOLE 13

PAR 3 - 330 ft.

- MANDOS right basket position / normal hole 13 tee pad
- DOUBLE MANDO** - Throw must pass between both marked trees
(if either mando is missed, proceed to the drop zone bricks between the trees with 1 stroke penalty)
- O.B.** curb / street and beyond on left side of the fairway + sidewalk & marked OB line and beyond on right side of the fairway near the lake
(play your next shot 1 meter inbounds from where the disc crossed OB with 1 stroke penalty)

** after playing hole #13, please proceed to hole #14's tee pad along the street as shown by the green arrows on the map going around hole #17's tee pad*



LAKESIDE HOLE 14

PAR 3 - 330 ft.

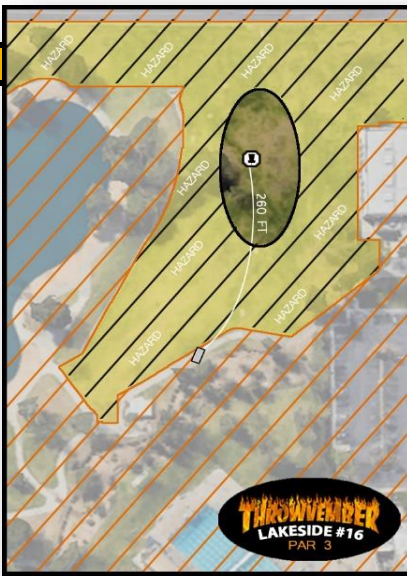
- MANDOS long straight basket position left of the gym / alt. hole 14 rubber tee pad
 NONE
- O.B.** cement sidewalk around the gym and roof of the gym + all marked OB lines and beyond + all sidewalks and beyond + parking lot and beyond past the basket
(play your next shot 1 meter inbounds from where the disc crossed OB with 1 stroke penalty)



LAKESIDE HOLE 15

PAR 3 - 235 ft.

- MANDOS short left basket position / alternate hole 15 tee pad at the back corner of the gym
 NONE
- O.B.** street and beyond + cement sidewalk around the gym and roof of the gym and sidewalk and beyond + beyond gutter and marked OB lines + within marked OB island green for hole #16
(play your next shot 1 meter inbounds from where the disc crossed OB with 1 stroke penalty)
- *re-tee if your tee shot never crosses inbounds*



LAKESIDE HOLE 16

PAR 3 - 260 ft.

MANDOS NONE

O.B. street and beyond + cement sidewalk around the gym and roof of the gym
*plus beyond gutter and marked OB lines on left side of the fairway
 (play your next shot 1 meter inbounds from where the disc crossed OB
 with 1 stroke penalty)*

HAZARD discs coming to rest outside of the marked island fairway/green that are not OB
 play as **HAZARD**
(play your next shot from where it came to rest with 1 stroke penalty)



LAKESIDE HOLE 17

PAR 4 - 560 ft.

MANDOS **DOUBLE MANDO** - Throw must pass between both marked trees
*(if either mando is missed, proceed to the marked drop zone
 between the trees with 1 stroke penalty)*

O.B. within marked OB lines and gutter and beyond right toward the lake + OB island
 green for hole #16 + all sidewalks and beyond with the exception of the island
 where the basket is located + beyond OB line past the basket
***sidewalk dividing the fairway from the green is OB if your full disc
 comes to rest on it**
*(play your next shot 1 meter inbounds from where the disc crossed OB
 with 1 stroke penalty)*



LAKESIDE HOLE 18

PAR 4 - 705 ft.

MANDOS **MANDO** - Throw must pass on the left side of the marked pole
(if mando is missed, play your next shot from the drop zone inbounds left of the pole)

O.B. Gutter / right of gutter and beyond on the right side of the fairway including
 extended OB line after the gutter to just before the basket + all sidewalks
 and beyond + gutter and beyond near the playground on the left side
*(play your next shot 1 meter inbounds from where the disc crossed OB
 with 1 stroke penalty)*
***sidewalk dividing the fairway near the tee pad is OB if your full disc
 comes to rest on it**
***re-tee if your tee shot never crosses inbounds**



BACKSIDE HOLE 1

PAR 3 - 370 ft.

- straight basket position with marked island fairway & green / normal hole 1 tee pad
- MANDOS** NONE
- O.B.** Gutter / right of gutter and beyond + sidewalk and beyond + beyond fence line
(play your next shot 1 meter inbounds from where the disc crossed OB with 1 stroke penalty)
- HAZARD** discs coming to rest outside of the marked fairway that are not OB
 play as **HAZARD**
(play your next shot from where it came to rest with 1 stroke penalty)



BACKSIDE HOLE 2

PAR 3 - 275 ft.

- short basket position / normal hole 2 tee pad
- MANDOS** NONE
- O.B.** marked OB line and beyond left + beyond planters and fence line past the basket
 and all sidewalks and beyond
(play your next shot 1 meter inbounds from where the disc crossed OB with 1 stroke penalty)



BACKSIDE HOLE 3

PAR 4 - 485 ft.

- long island basket position / normal hole 3 tee pad
- MANDOS** **MANDO** - Throw must pass on the left side of the marked first tree
(if mando is missed, re-tee with 1 stroke penalty)
- O.B.** Planters behind and left of the tee pad + beyond the fence line at the houses + all
 sidewalks and beyond
(play your next shot 1 meter inbounds from where the disc crossed OB with 1 stroke penalty)
- HAZARD** marked OB line / Gutter and beyond play as a **HAZARD** (including cement island ring)
 *your disc must come to rest touching the sand of the island to be inbounds
(play your next shot from where it came to rest with 1 stroke penalty)



BACKSIDE HOLE 4

PAR 4 - 646 ft.

- MANDOS **MANDO** - deep right island basket position / normal hole 4 tee pad
 Throw must pass on the left side of the marked tree located in OB near hole 5 tee pad
(if mando is missed, play your next shot from the marked drop zone nearest the tree)
- O.B.** Gutter / right of gutter + short of the red brick line defining the green and the area beyond the curb at the planters surrounding the island green + beyond the fence line at the houses
(play your next shot 1 meter inbounds from where the disc crossed OB with 1 stroke penalty)
- *ALL OB off your tee shot, play your next shot from marked drop zone in the middle of the fairway with 1 stroke penalty**



BACKSIDE HOLE 5

PAR 3 - 385 ft.

- MANDOS NONE
 short straight basket position / normal hole 5 tee pad
- O.B.** Gutter / right of gutter + all marked OB lines and beyond + beyond the fences/walls on the left side of the fairway
(play your next shot 1 meter inbounds from where the disc crossed OB with 1 stroke penalty)



BACKSIDE HOLE 6

PAR 3 - 258 ft.

- MANDOS NONE
 normal hole 6 basket position / normal hole 6 tee pad
- O.B.** all marked OB lines and beyond + sidewalk and beyond + beyond the fences/walls on the left side of the fairway
(play your next shot 1 meter inbounds from where the disc crossed OB with 1 stroke penalty)



BACKSIDE HOLE 7

PAR 4 - 500 ft.

- MANDOS long hole 9 basket position / normal hole 7 tee pad
 MANDO - Throw must pass on the right side of the marked tree
 (if mando is missed, proceed to the drop zone with 1 stroke penalty)
- O.B.** all sidewalks and beyond + fenceline and beyond + restroom rooftop & surrounding cement + beyond OB lines
 (play your next shot 1 meter inbounds from where the disc crossed OB with 1 stroke penalty)



BACKSIDE HOLE 8

PAR 3 - 280 ft.

- MANDOS hole 8 short basket position / alt. rubber tee pad
 MANDO - Throw must pass on the left side of the marked tree
 (if mando is missed, proceed to the drop zone with 1 stroke penalty)
- O.B.** all sidewalks and beyond+ parking lot and beyond right + fence line and beyond and restroom rooftop & surrounding cement + beyond OB lines
 (play your next shot 1 meter inbounds from where the disc crossed OB with 1 stroke penalty)

*** after completing hole #8, proceed to walk down the sidewalk to the tee pad for hole #9 past the driveway entrance as shown by the green arrows on the map**



BACKSIDE HOLE 9

PAR 4 - 575 ft.

- MANDOS hole 11 left basket position / normal hole 10 tee pad
 MANDO - Throw must pass on the left side of the marked pole
 (if mando is missed, proceed to the drop zone with 1 stroke penalty)
- O.B.** all sidewalks and beyond + parking lot and beyond
 (play your next shot 1 meter inbounds from where the disc crossed OB with 1 stroke penalty)
- *re-tee if your tee shot never crosses inbounds**

*** after completing hole #9, proceed to walk down the sidewalk and through the parking lot to the tee pad for hole #10 (normal backside hole #11 tee pad)**

BACKSIDE HOLE 10

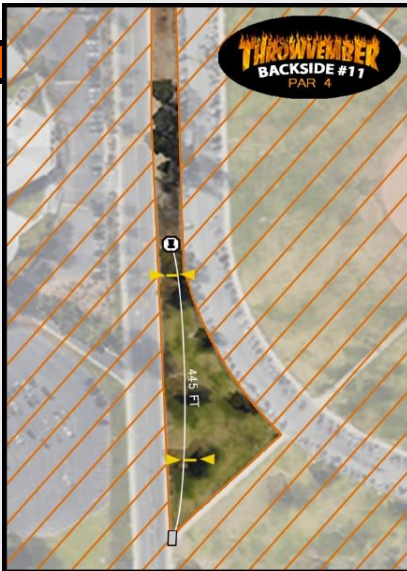
PAR 3 - 245 ft.



- MANDOS **MANDO** - Throw must pass on the left side of the marked tree
(if mando is missed, proceed to the marked drop zone with 1 stroke penalty)
- O.B.** all sidewalks and beyond + parking lot and beyond
(play your next shot 1 meter inbounds from where the disc crossed OB with 1 stroke penalty)

BACKSIDE HOLE 11

PAR 4 - 445 ft.



- MANDOS **DOUBLE DOUBLE MANDO** - Throws must pass between both marked trees in the 1st set of mandos as well as the marked tree & marked pole in the 2nd set of mandos
(if either mando is missed, proceed to the marked drop zone between that missed mando)
- O.B.** all sidewalk and beyond + parking lot and beyond
(play your next shot 1 meter inbounds from where the disc crossed OB with 1 stroke penalty)

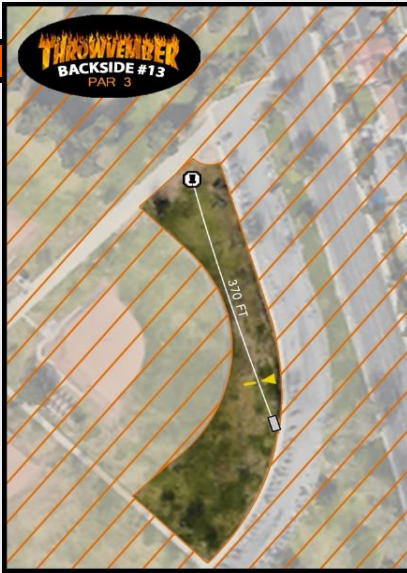
BACKSIDE HOLE 12

PAR 3 - 330 ft.



- MANDOS NONE
- O.B.** all sidewalks and beyond + beyond OB line and baseball outfield fence
***sidewalk dividing the fairway is OB.**
(play your next shot 1 meter inbounds from where the disc crossed OB with 1 stroke penalty)

*** use caution when throwing for pedestrians using the sidewalks**



BACKSIDE HOLE 13

PAR 3 - 370 ft.

- MANDOS normal hole 13 right basket position / normal hole 13 tee pad
- MANDO** - Throw must pass on the left side of the large pole
(if mando is missed, proceed to the marked drop zone with 1 stroke penalty)
- O.B.** beyond the baseball field fence and extended marked OB line + all sidewalks and beyond + beyond marked OB lines at the corner right of the basket
(play your next shot 1 meter inbounds from where the disc crossed OB with 1 stroke penalty)



BACKSIDE HOLE 14

PAR 3 - 340 ft.

- MANDOS normal hole 16 basket position / normal hole 14 sidewalk tee pad
- DOUBLE MANDO** - Throw must pass between both marked trees
(if either mando is missed, proceed to the marked drop zone between the trees with 1 stroke penalty)
- O.B.** beyond the baseball field fence & extended marked OB line + all sidewalks and beyond + gutter and beyond near hole 2's tee pad + restroom rooftop and surrounding cement
(play your next shot 1 meter inbounds from where the disc crossed OB with 1 stroke penalty)



BACKSIDE HOLE 15

PAR 3 - 285 ft.

- MANDOS hole 15 long left basket position / normal hole 15 tee pad
- MANDO** - Throw must pass on the left side of the first large tree
(if mando is missed, proceed to the marked drop zone with 1 stroke penalty)
- O.B.** beyond the baseball field fence on left side of the fairway + beyond extended OB line after the end of the fence + sidewalk and beyond past the basket and gutter / right of gutter on the far right side of the fairway
(play your next shot 1 meter inbounds from where the disc crossed OB with 1 stroke penalty)

BACKSIDE HOLE 16

PAR 3 - 305 ft.



- MANDOS short right basket position / normal hole 16 sidewalk tee pad
MANDO - Throw must pass on the left side of the large marked pole
(if mando is missed, proceed to the marked drop zone with 1 stroke penalty)
- O.B.** Gutter and beyond on the left side of the fairway + beyond the baseball field fence + sidewalk and beyond behind the tee pad
(play your next shot 1 meter inbounds from where the disc crossed OB with 1 stroke penalty)

BACKSIDE HOLE 17

PAR 4 - 550 ft.



- MANDOS short hole 18 basket position / normal hole 17 tee pad
DOUBLE MANDO - Throw must pass between both marked trees
(if either mando is missed, proceed to the marked drop zone between the trees with 1 stroke penalty)
- O.B.** gutter & sidewalk and beyond right on the right side of the fairway and behind the basket + sidewalk & marked OB line and beyond left on the left side of the fairway plus beyond baseball fence and extended marked OB line
***sidewalk dividing the fairway is OB if your full disc comes to rest on it**
(play your next shot 1 meter inbounds from where the disc crossed OB with 1 stroke penalty)

BACKSIDE HOLE 18

PAR 3 - 295 ft.



- MANDOS temp. island basket position / alt. marked cement tee pad
NONE
- O.B.** all sidewalks and beyond + dirt baseball infield and beyond + OB line and beyond + within the handball courts
(play your next shot 1 meter inbounds from where the disc crossed OB with 1 stroke penalty)
- HAZARD** discs coming to rest outside of the marked island fairway/green that are not OB play as **HAZARD**
(play your next shot from where it came to rest with 1 stroke penalty)

5th and final event of the 2024

CALIFORNIA

DISC GOLF

SERIES

THROWVEMBER

Long Beach

La Mirada
SUMMER
CLASH
20 24



thank you to our series sponsors:



Join us Friday 11/1 at
Ruby Red's
BBQ
est. 1990
1841 W. Imperial Hwy

THROWVEMBER
kickoff party

11/1 from 5:00pm to 8:00pm

players pack distribution &
free putting league competition
for all registered players

\$150 for 1st / \$75 for 2nd / merch for 3rd