



THE IRON LEAF



The Links at New Minas

Sept 21 & 22, 2024

CADDY BOOK

All players are responsible for reading and understanding the contents of this booklet, including property rules, course layout/OB, and event schedule.

CONTENTS

1. Welcome
2. Sponsors
3. Check In & Tee Times
4. Tee Assignments
5. Player's Pack
6. Ace Pot
7. Playoff
8. Course Notes & Map
9. East Coast Disc Golf Tour



THE IRON LEAF

The Links at New Minas



WELCOME!

Welcome to the 2024 edition of fan favorite Iron Leaf! We are a few weeks earlier than usual this year, which just means we have more sunlight to enjoy one of our best loved events.

The Bushwhacker crew have kept up the hard work and have TWO brand new, permanent holes ready for us! You can find them in the back left corner of the property after tournament hole 15 (regular 16).

We're aiming to have the course set up and ready to play by 12 noon on Friday!

SPONSORS

A huge thank you to our vending sponsor - [Chain Reaction Disc Golf Supply](#)! Chain Reaction is the largest disc golf vendor in the Atlantic provinces and one of the biggest in Canada. We're thrilled to have their ongoing support for the ECDGT and everything disc golf. Chain Reaction will on site Saturday for all your disc golf needs!

We would like to give a special thank you to the Bushwhackers Club, Landry Auto Group, Sportwheels, and all our season long contributors

- Greenfoot Energy Solutions
- [She Dyer Discs](#)
- [The Hand Pie Company](#)



SHE.DYZER.DISCS
Custom Disc Dye Artwork





THE IRON LEAF

The Links at New Minas



CHECK IN & TEE TIMES

Please arrive at the gathering area near hole 1 at least 15 minutes prior to your tee time!

All players must keep score. The digital scoring password is: FLICK

Tee times will be posted Thursday night on the event page: <https://www.pdga.com/tour/event/85352>

Please double check your tee times Friday night as adjustments might need to be made.

Round 1 tee times will start at 8am Saturday! Round 2 tee times are scheduled to start at 12:10pm. All players will have a minimum of 45 minutes for lunch. Sunday tee times will start at 745am.

TEE ASSIGNMENTS

All layouts are in UDisc. A course map can be found at the end of this caddy book and attached to the discgolfsce scene page, along with hole notes detailing all the OB!

Blue Layout (Group A): MPO, MP40, MA1

Purple Layout (Group B): FA1, MP50, MA40

Red Layout (Group C): FA2, FA40, MJ18, MA2, MA50

PLAYER'S PACK

Amateur player packs include the following:

- \$35 credit to Chain Reaction Disc Golf Supply (added to your personal code & redeemable on site, online, in store or at any future event where CRDGS is set up!)
- CTP prize for EVERY card in Rounds 1 and 2!
- Win Your Card prize for EVERY card in Round 3!
- Points awarded towards 12-event tour series with year-end prizes & trophies (best 5 count!)

Trophies will be awarded to the top 3 finishers in each division!



THE IRON LEAF

The Links at New Minas



ACE POT

\$5 optional Ace Pot is available on the DGS sign up page - update your registration there if you missed it!
If no aces are hit the pot carries over to the next ECDGT event!!

PLAYOFF

If a playoff is required in any division (1st place only), competitors will play the following holes on loop if necessary: 23, 24! In case of more than 2 competitors in a playoff, anyone not recording the lowest score on a hole is eliminated from the playoff (ex Player A and B score a 3 on hole 1 and player C scores a 4. Player C finishes in 3rd place, players A and B continue the playoff on hole 2). Tee order on the first playoff hole is chosen randomly (ex: coin or disc flip), and alternates each hole.

COURSE MAP & NOTES

Please see the course map and hole notes on the following pages.

EAST COAST DISC GOLF TOUR

Follow the ECDGT on social media for tour info, event updates, tour standings, sponsorship info and more!!

- Instagram: [ec_dgt](#)
- Website: www.ecdgt.ca (launching soon!)

The East Coast Disc Golf Tour is a tournament series in Atlantic Canada providing a high quality event experience and season long point race. Join us at any or all of the 12 scheduled events to enjoy some of Atlantic Canada's finest courses and elite competition! Each player's best 5 finishes count towards overall standings in the hunt for overall tour titles and prizes!



THE IRON LEAF

The Links at New Minas



COURSE NOTES

Hole	2024 Iron Leaf Hole Notes All Pavement is OB Note	Group A MPO/MP40/MA1		Group B MP50/FA1/MA40		Group C FA40/FA2/MJ18 MA2/MA50	
		Par	Length	Par	Length	Par	Length
1	Gravel Parking Lot, Road, Paved Parking Lot are OB	3	273	3	273	3	207
2	No OB	3	240	3	240	3	240
3	No OB	3	354	4	354	4	354
4	Island Hole, if OB off tee proceed to drop zone w/1 stroke penalty. Regular OB rules from DZ.	3	195	3	195	3	195
5	No OB	3	288	3	288	3	234
6	No OB	3	265	3	265	3	265
7	No OB	4	410	4	250	4	250
8	No OB	3	234	3	234	3	234
9	OB Road, OB Right Parking Lot & Beyond, OB Long Fence & Beyond	3	237	3	237	3	237
10	OB Road, OB Left Fence & Beyond, OB Long Parking Lot	3	233	3	233	3	233
11	OB Road	3	360	3	360	3	275
12	OB Building (Roof & Inside), OB Fence & Beyond Behind Building	3	189	3	189	3	189
13	No OB	3	312	3	262	3	262
14	No OB	3	270	3	270	3	270
15	No OB	3	312	3	255	3	255
16	No OB	3	225	3	225	3	225
17	No OB	4	363	4	363	4	363
18	No OB	4	485	5	485	4	447
19	No OB	4	411	4	310	4	310
20	OB Long Parking Lot	3	221	3	221	3	221
21	No OB	4	522	4	522	4	522
22	OB Right Path & Beyond Up to Flags then Baseball Field Fence is OB Line, OB Left Flagged Treeline & Soccer Field Fence & Beyond, OB Long Small Baseball Field	5	953	5	845	5	796
23	OB Baseball Field, OB Parking Lot Left	3	240	3	240	3	240
24	Island Hole, if OB off tee proceed to drop zone w/1 stroke penalty. Regular OB rules from DZ.	3	370	3	345	3	300

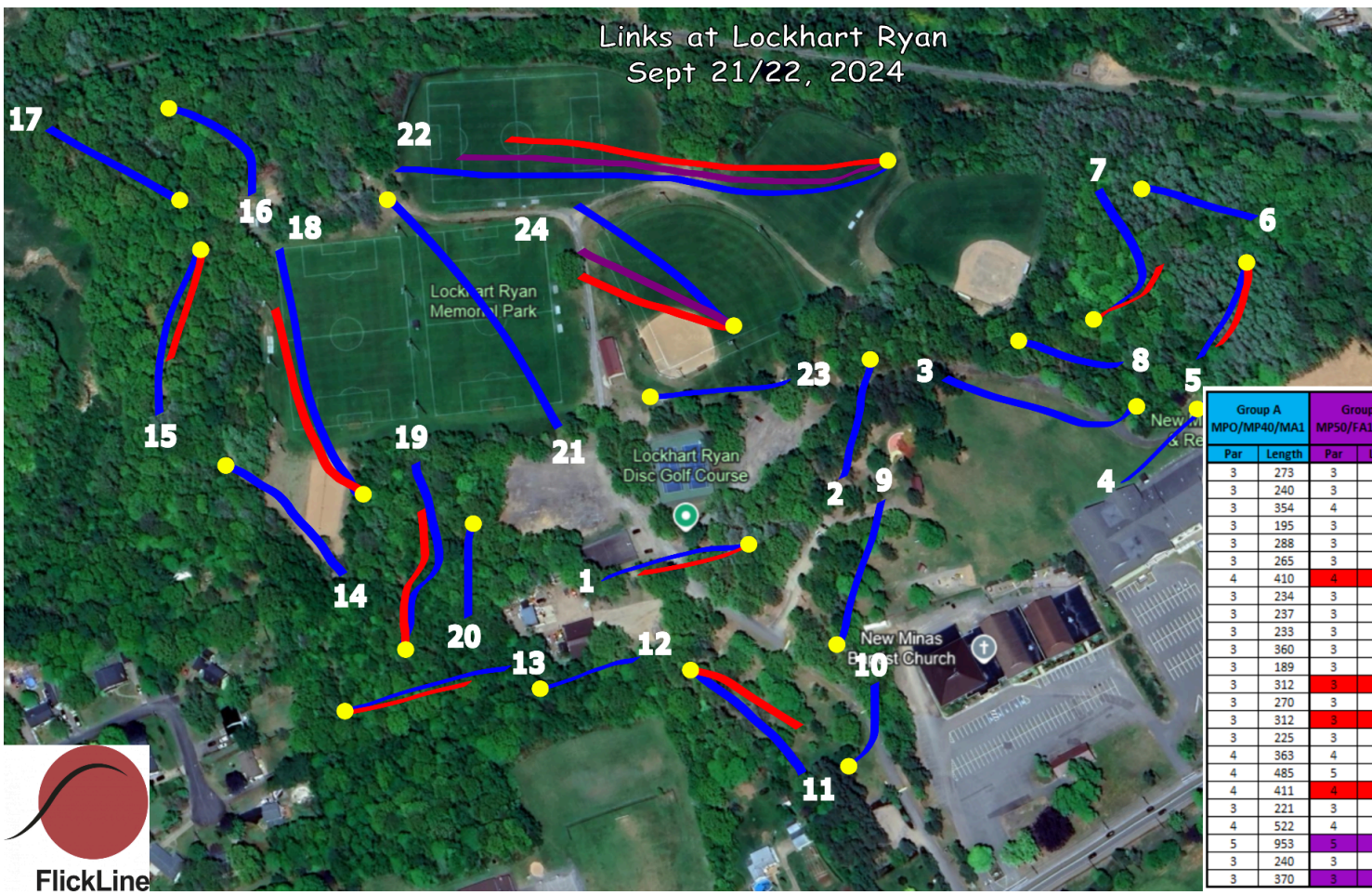


THE IRON LEAF

The Links at New Minas



COURSE MAP



Group A MPO/MP40/MA1		Group B MP50/FA1/MA40		Group C FA40/FA2/M118 MA2/MA50	
Par	Length	Par	Length	Par	Length
3	273	3	273	3	207
3	240	3	240	3	240
3	354	4	354	4	354
3	195	3	195	3	195
3	288	3	288	3	234
3	265	3	265	3	265
4	410	4	250	4	250
3	234	3	234	3	234
3	237	3	237	3	237
3	233	3	233	3	233
3	360	3	360	3	275
3	189	3	189	3	189
3	312	3	262	3	262
3	270	3	270	3	270
3	312	3	255	3	255
3	225	3	225	3	225
4	363	4	363	4	363
4	485	5	485	4	447
4	411	4	310	4	310
3	221	3	221	3	221
4	522	4	522	4	522
5	953	5	845	5	796
3	240	3	240	3	240
3	370	3	345	3	300

