

**CT
24
wo**

**04.13.24
CHAPEL HILL DGC
GEORGETOWN, TX**

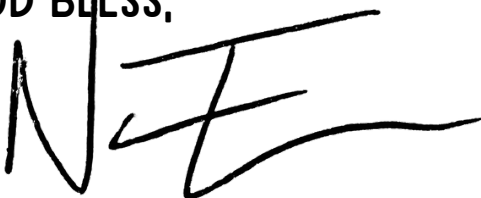
NOTE FROM THE TD

WELCOME TO THE 2024 CENTRAL TEXAS WILDFLOWER OPEN!
THANK YOU FOR TAKING TIME OUT OF YOUR SCHEDULE TO COME
PLAY IN THIS TOURNAMENT. WHETHER IT IS YOUR FIRST TIME HERE
OR YOU'VE BEEN TO EVERY TOURNAMENT CHAPEL HILL DGC HAS
PUT ON, WE'RE EXCITED TO HAVE YOU AND HOPE TO BRING YOU
THE BEST EXPERIENCE YOU'LL RECEIVE AT A C-TIER ALL YEAR.

THIS IS THE FOURTH YEAR WE HAVE HELD THE CTWO AND THE
SIXTH TOURNAMENT WE WILL HAVE HELD ON THE CHAPEL HILL
DISC GOLF COURSE. MYSELF, THE CHURCH, AND THE VOLUNTEERS
OUT HERE HELPING ME TODAY SINCERELY THANK YOU FOR
JOINING US OUT HERE. THE GROWTH OF DISC GOLF OVER THE
PAST FEW YEARS HAS BEEN ENORMOUS AND WE'VE SEEN IT IN
FOOT TRAFFIC AS WELL AS PARTICIPATION IN LEAGUES, EVENTS,
AND TOURNAMENTS HERE AT CHAPEL HILL DGC.

IT IS MY GOAL TO GIVE YOU THE BEST DISC GOLF EXPERIENCE I
CAN, SO IF THERE IS ANYTHING YOU NEED FROM ME OR MY
VOLUNTEERS TODAY, PLEASE DON'T HESITATE TO ASK. THANK
YOU AGAIN FOR YOUR PARTICIPATION TODAY AND BEST OF LUCK
TO YOU IN YOUR ROUND!

GOD BLESS,



Hyperemes
DISC GOLF CLUB

RECOGNITION

TITLE SPONSOR



DISC NATION
One Nation Under Par

PLAYER'S PACKS PROVIDED BY



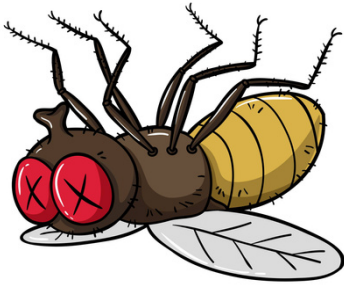
TOURNAMENT PARTNERS



MARILYN TUCKER
ONCOLOGY SUPPORT TEAM

RECOGNITION

HOLE SPONSORS



2024 CHARITY FOR THE CTWO

WILDFLOWER LADIES



THIS YEAR, WE ARE RAISING MONEY TO PROVIDE ENTRY FEES FOR HYZERENES/CHAPEL HILL LADIES TO PARTICIPATE IN WILDFLOWER TOUR EVENTS IN 2024. \$2 OF EVERY ENTRY WILL GO TOWARDS THIS WILDFLOWER FUND AND RECIPIENTS WILL BE CHOSEN AT A LATER DATE. YOU CAN HELP SUPPORT THE WILDFLOWER TOUR DIRECTLY BY FOLLOWING ON FACEBOOK AND ATTENDING FUNDRAISER EVENTS!

TOURNAMENT SCHEDULE

- 10:30AM** PLAYER CHECK-IN/REGISTRATION
- 11:15AM** PLAYER'S MEETING
- 12:00PM** ROUND 1 BEGINS - **BLUE LAYOUT**
- 1:30PM** 30 MINUTE BREAK FOR BASKET
PLACEMENT (AFTER LAST CARD TURNS IN)
- 2:00PM** ROUND 2 BEGINS - **GOLD LAYOUT**
- 3:45PM** AWARDS/PAYOUT & RAFFLE
- 4:15PM** DISTANCE CONTEST HOSTED BY ERIC STUBER

PLEASE NOTE THAT BREAK, ROUND 2, AND
AWARDS CAN CHANGE SLIGHTLY DEPENDING
ON SPEED OF ROUNDS

GENERAL RULES

All PDGA standard rules apply and specific hole rules can be found on the next pages.

Any water on course is considered casual.

All fenced-in properties are OB and if you cannot safely retrieve your disc from the course property, you must leave the disc to be retrieved by staff later. Do not hop any fences/enter any property that is not on the course. These OBs are determined by the bottommost wire of the fence.

The storage facility roof and property is OB. Do not hop any fences/climb the storage facility fence/buildings.

Please refrain from drinking alcohol on church property and if you choose to smoke, please dispose of cigarette trash properly.

Pack out any trash you bring in!

Shirts are required, per PDGA protocol.

If you have any questions/disputes about any rulings, please: play a provisional, play out both ways to score, record both scores, and the TD will provide a final ruling after the round. Do not submit your PDGA scorecard until this is resolved.

Order of priority on OB:

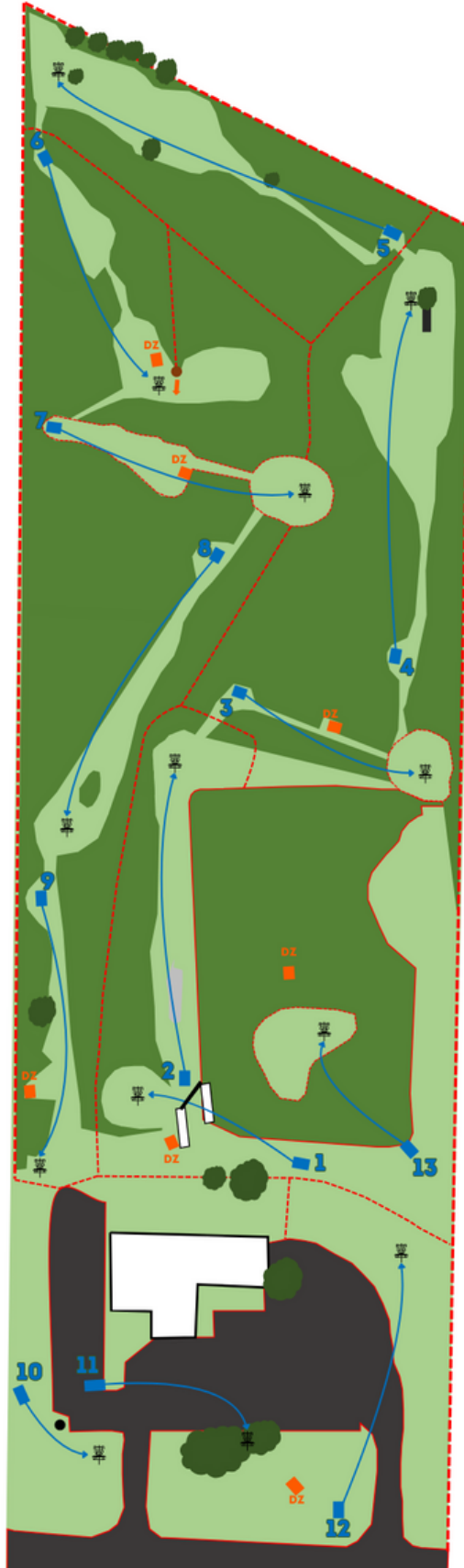
1. Paint
2. Rope
3. Flags
4. Posts

Paint, ropes, and lines are all considered Out-of-bounds. So if your disc is mostly OB and touching the paint, rope, or line, it is OB. Your disc must be touching something that is in-bounds.

2 meter relief from any barbed wire and Hwy 29 (for safety)

CHAPEL HILL BLUE

H1 | P3 | 189'
H2 | P3 | 344'
H3 | P3 | 201'
H4 | P3 | 374'
H5 | P3 | 407'
H6 | P3 | 285'
H7 | P3 | 268'
H8 | P3 | 331'
H9 | P3 | 296'
H10 | P3 | 106'
H11 | P3 | 175'
H12 | P3 | 286'
H13 | P3 | 150'



RULES

ALL PROPERTY BEYOND FENCES AND ON TOP OF BUILDINGS ARE OB. ALL DISCS SURROUNDED BY ASPHALT OR CONCRETE ARE OB. NO WATER OB ON COURSE.

HOLES 3, 7, 10, 11, AND 13 ALL HAVE DROP ZONES. IF YOUR DRIVE DOES NOT COME TO REST IN BOUNDS, PROCEED TO DZ. IF OB FROM DZ, PLAY NORMAL OB RULES.

HOLES 1, 6, AND 10 HAVE MANDATORIES. IF YOU DO NOT MAKE THE MANDATORY, PROCEED TO DZ.

SEE SPECIFIC HOLE RULES FOR MORE INFORMATION.

NO 2-METER RULE

BLUE HOLE-SPECIFIC RULES

Hole 1 – 189', Triple mandatory. Proceed to DZ if missed mando

Hole 2 – 344', See GCR.

Hole 3 – 201', Island hole. Proceed to DZ if OB off tee. Continue from DZ until disc comes to land on island.

Hole 4 – 374', See GCR.

Hole 5 – 407', See GCR.

Hole 6 – 285', Mandatory right of pole. Proceed to DZ if missed mando.

Hole 7 – 268', Tall grass marked with OB line. Proceed to DZ if OB off tee.

Hole 8 – 331', See GCR.

Hole 9 – 296', Proceed to DZ if OB off tee

Hole 10- 106', Mandatory right of pole.

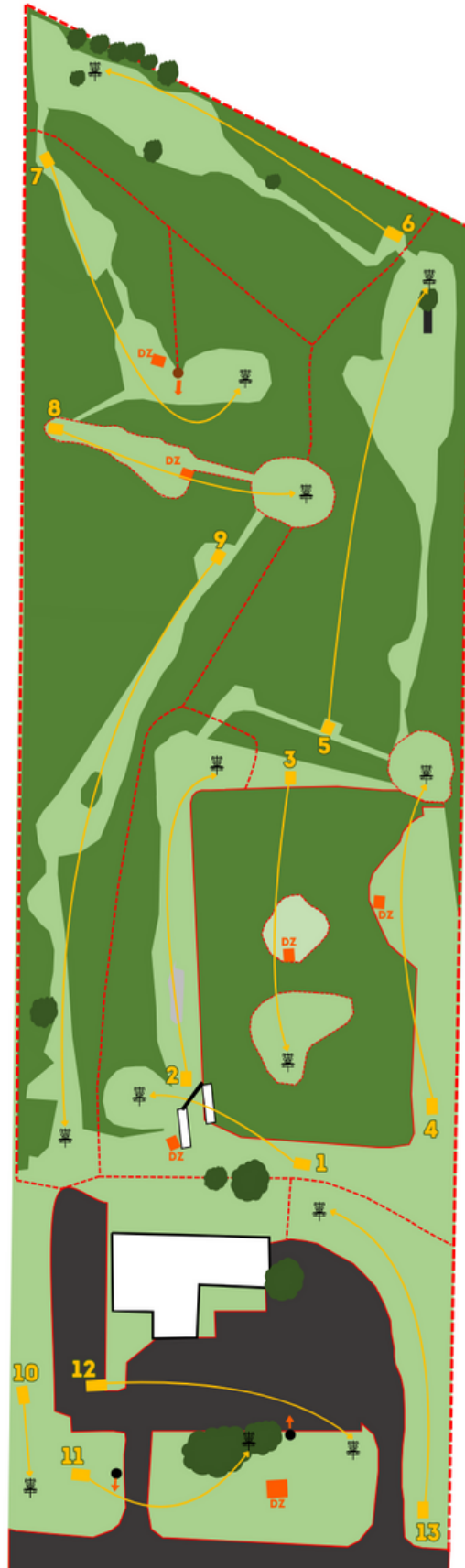
Hole 11 – 175, Island hole. Proceed to DZ if OB from tee.

Hole 12 – 286', Asphalt and gravel OB where designated. **Grass to right of gravel path is safe**

Hole 13 –150', Island hole. Proceed to DZ if OB from tee.

CHAPEL HILL GOLD

H1 | P3 | 189'
H2 | P3 | 351'
H3 | P4 | 343'
H4 | P4 | 385'
H5 | P4 | 481'
H6 | P3 | 378'
H7 | P3 | 364'
H8 | P3 | 268'
H9 | P4 | 674'
H10 | P3 | 107'
H11 | P3 | 172'
H12 | P3 | 280'
H13 | P3 | 327'



RULES

ALL PROPERTY BEYOND FENCES AND ON TOP OF BUILDINGS ARE OB. ALL DISCS SURROUNDED BY ASPHALT OR CONCRETE ARE OB. NO WATER OB ON COURSE.

HOLES 3, 4, 8, 11, AND 12 HAVE DROP ZONES. IF YOUR DRIVE DOES NOT COME TO REST IN BOUNDS, PROCEED TO DZ. IF OB FROM DZ, PLAY NORMAL OB RULES.

HOLES 1, 7, 11, AND 12 HAVE MANDATORIES. IF YOU DO NOT MAKE THE MANDATORY, PROCEED TO DZ.

SEE SPECIFIC HOLE RULES FOR MORE INFORMATION.

NO 2-METER RULE

GOLD HOLE-SPECIFIC RULES

Hole 1 – 189', Triple mandatory. Proceed to DZ if missed mando

Hole 2 – 351', See GCR.

Hole 3 – 343', Island hole. Proceed to DZ if OB off tee. **There is a short island that is SAFE**

Hole 4 – 385', If OB from tee, proceed to DZ.

Hole 5 – 481', See GCR.

Hole 6 – 378', See GCR.

Hole 7 – 364', Mandatory right of pole. Proceed to DZ if missed mando.

Hole 8 – 268', Tall grass OB as marked by paint. Proceed to DZ if OB off drive.

Hole 9 – 674', See GCR.

Hole 10 - 107', OB marked by paint and flags.

Hole 11 – 172, Mandatory right of pole. If OB from tee, proceed to DZ.
Wait for 12 to tee off before approaching your putt

Hole 12 – 280', Mandatory left of sign near 11's basket. If OB off tee or missed mando, proceed to DZ. If you land short of the mando, but in-bounds, please proceed with caution in regards to 11's basket.

Islands in middle of parking lot are SAFE (curb is in-bounds)

Hole 13 – 327', See GCR.