

2026 Rogue Iron Open @ NLV Caddy Book

Hello all and welcome to the 2026 Rogue Iron Open @ NLV Municipal Golf Course Presented by Player Two Disc Golf!

This is your official caddy book for the event! Please give it a quick read through before the tournament. If you have any questions about the event, please reference this first. If your question isn't answered here, feel free to give me a call or text at 719-465-4065.

CHECK-IN

Check in will run from 8:00am to 8:30am outside the golf clubhouse. Players **MUST** check in to participate in the event. A brief player's meeting will be held at 8:30. Players **MUST** attend this meeting before heading to their starting holes. I promise, you will have plenty of time to walk to your starting holes after the meeting.

GENERAL INFO

This is a PDGA Sanctioned C-Tier event, so I want to highlight a few important rules here:

- Do not throw if your shot can hit another player or spectator. Wait until it is clear!
- Assist with finding lost discs, and for rate of play, please make sure all players on the card actively look for the lost disc and a 3 minute timer has been started.
- All players **MUST KEEP SCORE**. The preferred method is PDGA Live Scoring, which can be done through the PDGA app, or

pdga.com/scores. The live scoring code is **ROGUEIRON**. Scoring can also be done through UDisc or paper.

- Please use provisionals if necessary!
- All mandatories will have a spray painted line on the opposite side of the intended fairway. If your disc crosses this line at any point of it's flight, even if it initially crosses on the correct side of the mando, it is deemed a missed mandatory. Proceed to the drop zone with a stroke penalty.

SCHEDULE AND POOLS

This is a 2-round tournament, with a lunch break in between rounds. The 2nd round will start 1 hour after the last group on the course has submitted scores from the 1st round.

- Check-in: 8:00-8:30am
- Player's Meeting: 8:30am
- Round 1 Start Time: 9:00am
- Lunch (est.): 12:00pm-1:00pm
- Round 2 Start Time (est): 1:00pm-4:00pm
- Awards (est.): 4:00pm

A Pool: MPO, FPO, MP40, MP50, MA1, MA40, MA2

B Pool: All other divisions

COURSE INFO

- Please note that many of the baskets are temporary! It is the player's responsibility to know the course layout, so please double check the course notes and/or UDisc if your card is unsure. Once again, feel free to reach out to me during the rounds if you have any questions!
719-465-4065
- The best way to navigate the course is through UDisc! Since there are 2 pools and the course is changing in between rounds, there are 4 layouts in UDisc.

HOLE-BY-HOLE BREAKDOWN

Hole 1

Morning - Gold Basket

Par 3/4

370ft

Afternoon - White Basket

Par 3

350ft

Fences and beyond are OB. Golf greens are OB. Sand traps are hazard



Hole 2

Morning - Gold Basket

Par 3

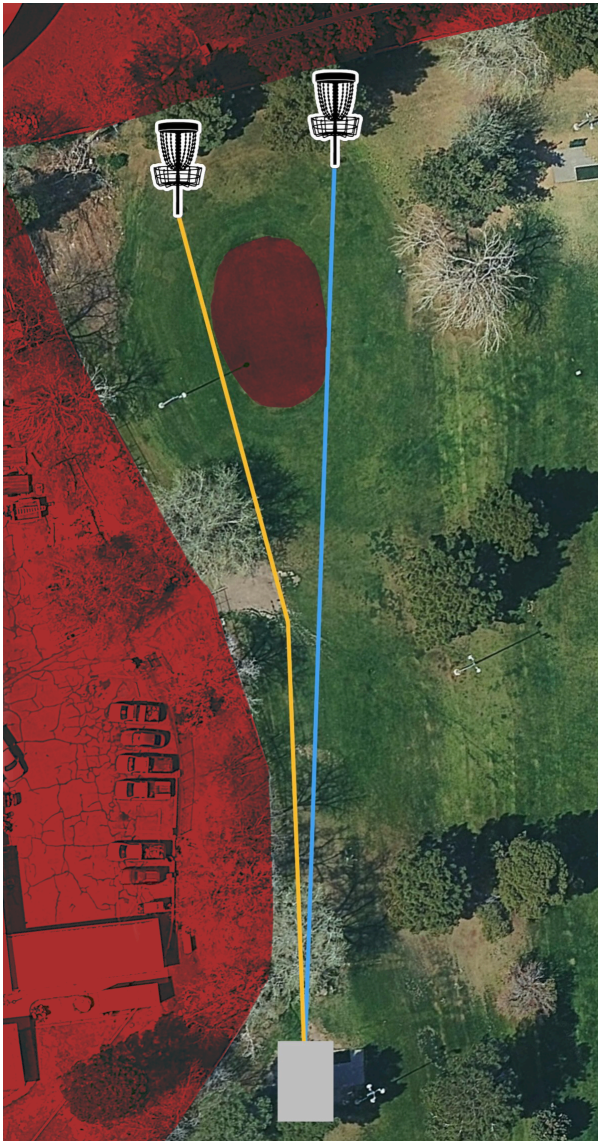
350ft

Afternoon - White Basket

Par 3

340ft

Fences and beyond are OB. Golf greens are OB. Sand traps are hazard



Hole 3

UNCHANGED BETWEEN ROUNDS

A Pool - Gold Basket

Par 4

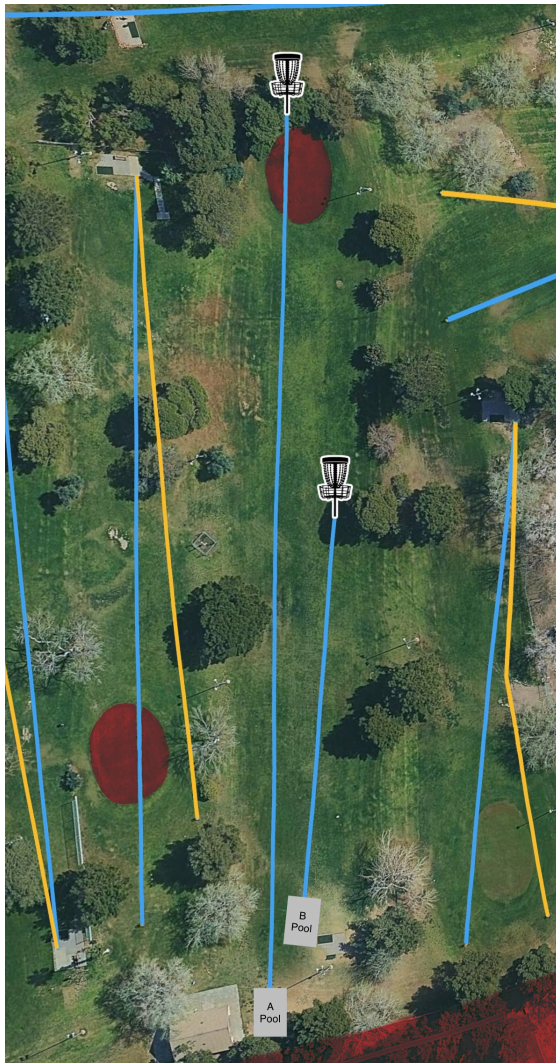
550ft

B Pool - Short Temp Tee - Temp Basket

Par 3

310ft

Fences and beyond are OB. Golf greens are OB. Sand traps are hazard



Hole 4

Morning - Gold Basket

Par 3/4

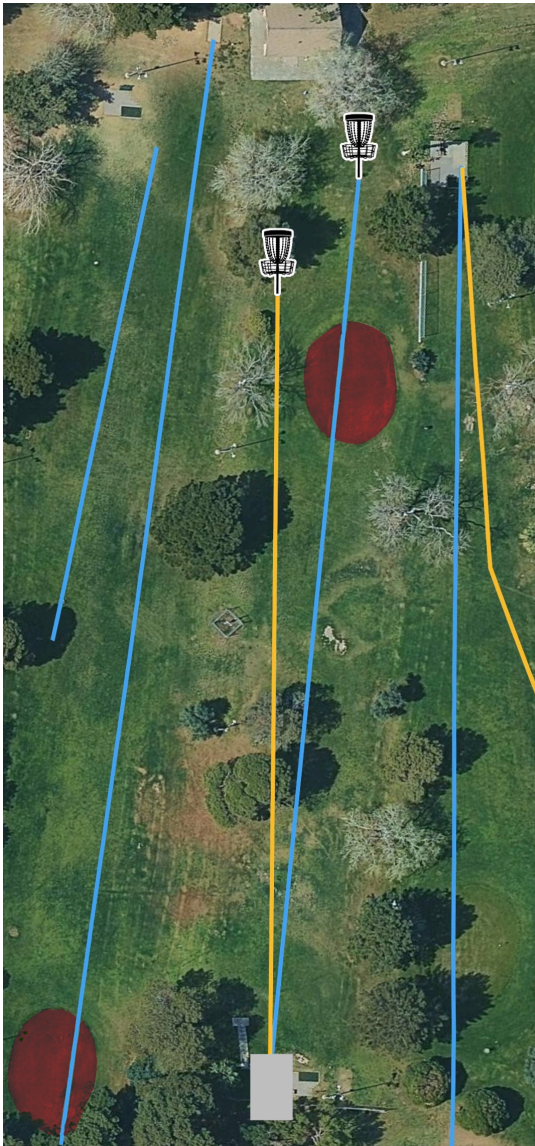
440ft

Afternoon - White Basket

Par 3

380ft

Fences and beyond are OB. Golf greens are OB. Sand traps are hazard



Hole 5

UNCHANGED BETWEEN ROUNDS

All Pools - Temp Basket

Par 3

180ft

Mando left of marked tree. If missed mando, proceed to drop zone with stroke penalty. Fences and beyond are OB. Flag line right and beyond is OB



Hole 6

UNCHANGED BETWEEN ROUNDS

All Pools - Temp Basket

Par 3

260ft

Fences and beyond are OB



Hole 7

UNCHANGED BETWEEN ROUNDS

A Pool - Long Tee - Temp Basket

Par 3

280ft

B Pool - Short Tee - Temp Basket

Par 3

230ft

Fences and beyond are OB



Hole 8

UNCHANGED BETWEEN ROUNDS

All Pools - Temp Basket

Par 3

220ft

Fences and beyond are OB. Playground area is safe



Hole 9

UNCHANGED BETWEEN ROUNDS

All Pools - Temp Basket

Par 3

270ft

Mando right of marked light pole. If missed mando, proceed to drop zone with stroke penalty. Fences and beyond are OB. Parking lot and beyond is OB



Hole 10

UNCHANGED BETWEEN ROUNDS

All Pools - Temp Basket

Par 3

370ft

Fences and beyond are OB. Pond is OB, disc must be completely surrounded by water



Hole 11

UNCHANGED BETWEEN ROUNDS

All Pools - Temp Basket

Par 3/4

390ft

Mando left of marked light pole. If missed mando, proceed to drop zone with stroke penalty. Fences and beyond are OB. Pond is OB, disc must be completely surrounded by water



Hole 12

UNCHANGED BETWEEN ROUNDS

A Pool - Long Temp Basket

Par 3

440ft

B Pool - Short Temp Basket

Par 3

260ft

Fences and beyond are OB. Pond is OB, disc must be completely surrounded by water



Hole 13

UNCHANGED BETWEEN ROUNDS

All Pools - Temp Basket

Par 3

190ft

Fences and beyond are OB



Hole 14 (NLV Course Hole 5)

Morning - Gold Hole 8 Basket

Par 4

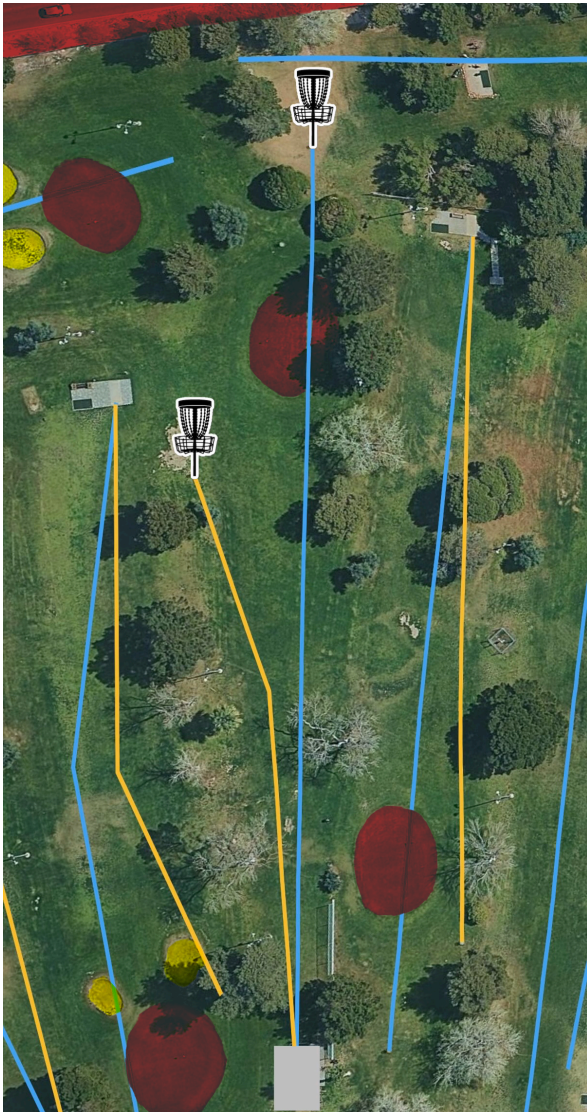
500ft

Afternoon - Gold Hole 5 Basket

Par 3

320ft

Fences and beyond are OB. Golf greens are OB. Sand traps are hazard



Hole 15 (NLV Course Hole 6)

Morning - Gold Basket

Par 3/4

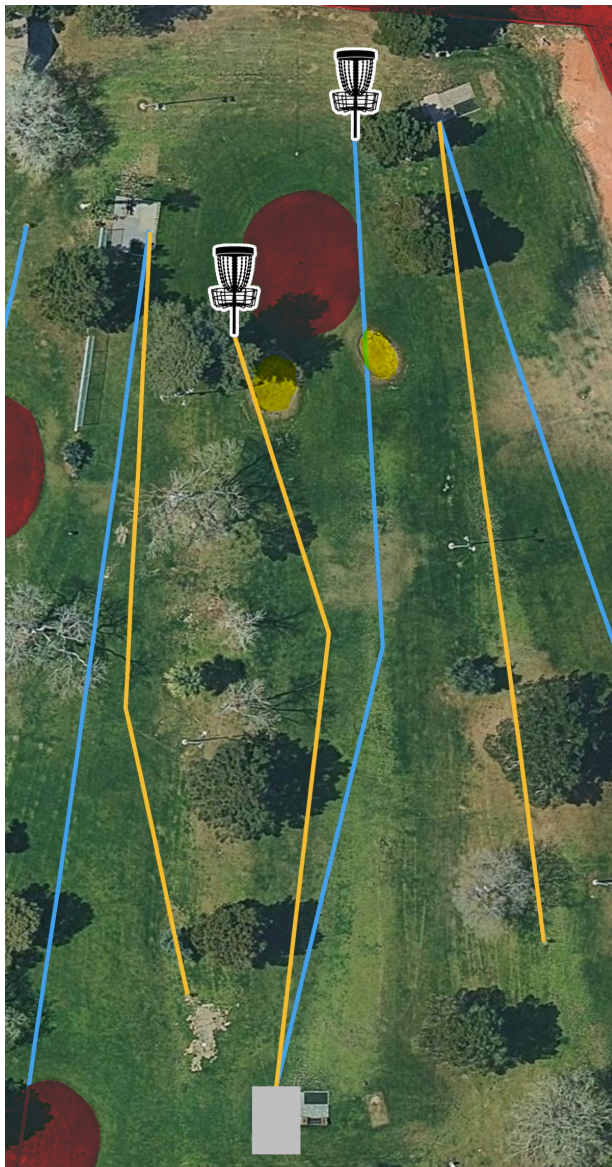
390ft

Afternoon - White Basket

Par 3

310ft

Fences and beyond are OB. Golf greens are OB. Sand traps are hazard



Hole 16 (NLV Course Hole 7)

Morning - White Basket

Par 3/4

450ft

Afternoon - Gold Basket

Par 3

350ft

Fences and beyond are OB. Golf greens are OB. Sand traps are hazard



Hole 17 (NLV Course Hole 8)

UNCHANGED BETWEEN ROUNDS

All Pools - White Basket

Par 3

260ft

Fences and beyond are OB. Golf greens are OB. Sand traps are hazard



