

May 29th - 31st, 2026

28th Anniversary Aspen Sports Treebash Open

Sponsored by Dynamic Discs



CADDIE BOOK

Welcome to the 28th Annual Treebash Open!

The Aspen Sports Treebash Open has been a staple of Arizona disc golf for more than two decades. Over the years, thousands of players, volunteers, sponsors, and supporters have helped shape this tournament into what it is today. That tradition continues this year thanks to our title sponsor, **Aspen Sports**, along with our incredible hole sponsors whose support and enthusiasm help make this event possible.

This year, each pool will enjoy play across 3 courses, featuring several exciting ace opportunities at every course. While this is a trophy-only event, for Amateur divisions player packs will include several premium items with a value well above the cost of entry.

Discraft has also been a major contributor to this year's player packs, and we'll have a limited selection of special full-foil discs available for purchase, customized by local artist **Sky Black**.

We're excited to continue the legacy of Treebash and can't wait to see everyone! Your Treebash team is led by Tournament Director **Yomira Valenzuela**, with strong support from **Kady Hennig, Kalin Nelson, Michelle Howe, Liam Dalton, and Tony Silva**. Together, we are working hard to create an experience that is enjoyable, challenging, and adventurous for everyone involved.

While this year's Treebash volunteers have done tremendous work to bring the event to life, we also recognize that we stand on the shoulders of those who have spent decades fundraising, maintaining, and expanding the disc golf community here in Flagstaff. A huge shoutout goes to the **Flagstaff Disc Golf Club Board** and **ALL of its Members** for their efforts in helping make three of our beloved local courses rank among the 10 best disc golf courses in Arizona — two of which many of you will be playing this weekend!

Tournament Overview

This weekend, we'll have over 200 members of the disc golf community playing Thorpe XL, McPherson Park, Fort Tuthill and NAU. At McPherson Park, we will all be playing the same long layout with a few holes in ACE range. For the A-pool, Thorpe XL is decidedly less attainable for birdies, so good luck out there! Thorpe XL includes a new safari hole from hole 16's tee to hole 17's basket. This will be capped off with a true pro-level par 4 to round out the course. Lastly, NAU course has been tested out in a few events. Let's see how your scores compare to the

best out there! These courses have some of the best mountain views of any course in the city.

We will have several raffle prizes available for you to win at our players party on SATURDAY, MAY 30th, from 5-7:30 at MCPHERSON by the ramada to the left of the skating rink and next to the playground area. Tickets will be available for purchase at each course and at check-in. If you purchase raffle tickets but will not make the players party, PLEASE WRITE YOUR NAME AND PHONE # on the back of your tickets so we can contact you. All raffle tickets will be chosen by 5 pm and posted on raffle items promptly. If you are not present at the time and your tickets do not have a name or contact number we will be forced to choose from the remaining tickets by 7 pm the latest at the players party. **Food and a few beverages will be available on site**, so come grab a small bite, hangout, and enjoy a few games with us!

Tournament Title Sponsor



Aspen Sports is once again our title sponsor! Aspen Sports is the premier 'hometown' outdoor outfitter located in downtown Flagstaff, Arizona. They have a fantastic merchandise selection and an experienced staff to assist you when you are planning your next outdoor adventure. They carry the highest quality, dependable and functional gear. If you're in need of a replacement disc or need something a bit less stable for 7,000-10,000', Aspen Sports has a great disc selection. Aspen Sports is looking forward to serving you! Whether you're planning to climb the San Francisco Peaks, hike the Arizona Trail, raft the Colorado River, or play in the Treebash, Aspen Sports has the gear, clothes and accessories to make your adventure a memorable one!

THANK YOU TO OUR OTHER SPONSORS!

YOGAERT

OLIVE THE BEST

DRINKING HORN

FDGC

GRAND CANYON CHOCOLATE

BEAVER STREET LIQUOR

DR. MARZOLF, DDS

**MCGREGOR'S WANDERING WIENER
WAGON**

Parking

Thorpe Park

Parking for your rounds at Thorpe Park Disc Golf Course is in the [Armory Parking lot](#) across from the course. You can also park in the softball lots, however, there is a lot of softball programming going on, so there may not be space. Please fill up the Armory Lot before using the softball lot, and **park as close to each other as possible** since only half the lot is currently available!



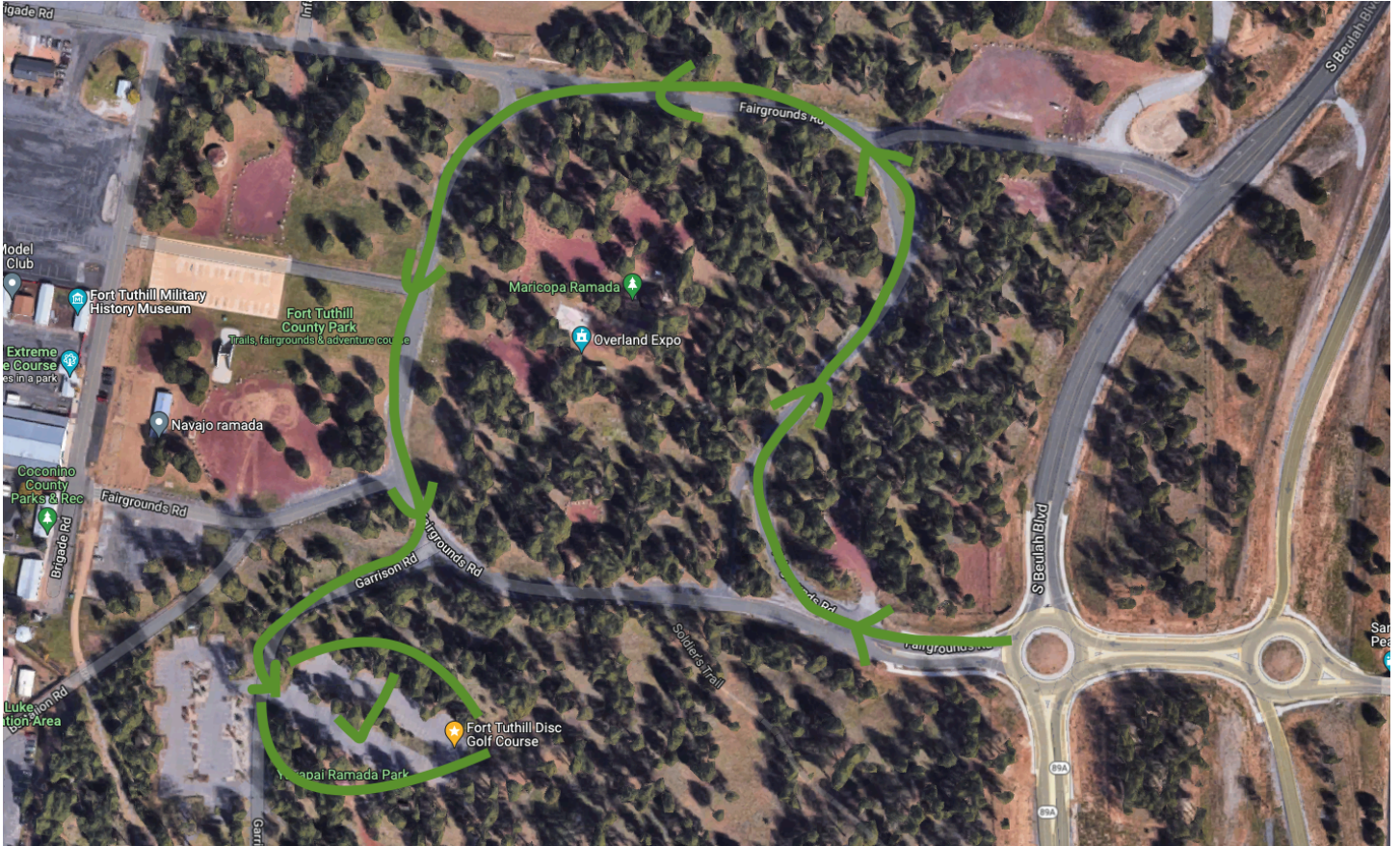
McPherson Parking

Parking for your rounds at McPherson Disc Golf Course park as close to each other as possible. Park at the Activity Center for last resort if other lot is already full



Fort Tuthill Parking

Make sure to obey the directional arrows and do not drive the wrong way. Look for the designated parking area, first right after Fairgrounds Road. If this parking lot is full, there is another lot across from the main parking lot and a small dirt area across from hole 18's teepad, but we should be okay in terms of parking



NAU Parking

There will be plenty of parking available here so feel free to park anywhere in the South Commuter Parking Lot (parking lot area anywhere by hole 1)



Schedule

TREEBASH SCHEDULE

	DAY 1 (Fri. 5/29)	DAY 2 (Sat. 5/30)	DAY 3 (Sun. 5/31)
A Pool (MPO, FPO, MP40, MP50, MA1)	Thorpe XL	Ft. Tuthill	McPherson
B Pool (FP40,50,60, FA1, MA/FA2, MA/FA3, MA/FA40,50,60,70)	Ft. Tuthill	McPherson	NAU

Thursday, May 28, 2026

CHECK-IN DAY!!!!

Hole 1: McPherson

- Those not present can check-in on Friday at their tee time. If you are checking in day-of, please get your players pack AFTER your round, not before. This will make life much easier on a small volunteer crew. (You can pick up your players pack at the B Pool course for the day and at the players party, but we will not be responsible for shipping any players packs that are not picked up by Saturday evening.)
- If you cannot pick up your players pack yourself, a friend can pick it up in order to help us from having to hunt you down before the end of the event.
- Pros do not receive a player's pack and do not need to check in, BUT please make sure you have paid into the ACE pot, if interested, BEFORE your FIRST round begins in order for it to be VALID.

3:30pm-
7:30pm

Charity Doubles Event: McPherson - LAYOUT LONG

- Sign ups for the doubles event will begin at 4:00pm and ends at 4:30pm, with startup shortly after.
- Entry Fee: \$30 per team
- Payout: 50% to winner payout, 50% to the
 - [NAVAJO STRONG FOUNDATION](#)

“Navajo Strong was created to aid and empower the Navajo community during the COVID-19 pandemic. It is reported that 30% - 40% of the citizens do not have running water or electricity. Not only are the residents battling a drought, underground uranium poisoning, underfunded Indian Health Services, poverty, and health disparities, they

4:00pm
- 7:00pm

are dealing COVID-19. But we are resilient, strong, and proud people! Please consider donating to this great cause!

IMPORTANT:

You need to bring your own partner. If you show up without one, you might not get to play. No cali option.

Come out and practice. You do not have to be registered for the tournament to play this event.

Friday, May 29, 2026

8:00am at [Thorpe XL](#)

A Pool (MPO, FPO, MP40, MP50, MP60,MP70, & MA1)

8:00am at [Fort Tuthill](#)

B Pool (FP40, FP50, FP60, FA1, MA2, FA2, MA3,FA3, MA40, FA40, MA50, FA50, MA60, FA60, MA70, FA70)

Saturday, May 30, 2026

8:00am at [Fort Tuthill](#)

A Pool (MPO, FPO, MP40, MP50, MA1)

8:00am at [McPherson](#)

B Pool (FP40, FP50, FP60, FA1, MA2, FA2, MA3,FA3, MA40, FA40, MA50, FA50, MA60, FA60, MA70, FA70, & JUNIORS)

5:00pm **Players party** - MCPHERSON (by the ramada and basketball courts to the left of the
-7:30pm skating rink and next to the playground area)

We're thrilled to announce that **Dr. Lynnette C. Gilmore**, PT, DPT, Board Certified Orthopedic Clinical Specialist and owner of [IINÁ Physical Therapy](#), will be offering a **FREE** clinic for all players at the Player's Party! Don't miss this amazing opportunity to learn recovery, mobility, and injury-prevention tips from a true professional.

FOOD will be hosted by **John McGregor**, [McGregor's Wandering Wiener Wagon](#)! With each bite, you'll taste the dedication and commitment that has gone into perfecting their

signature hot dogs. They strive to provide delicious and affordable street food while creating a memorable experience for their customers – all served up with a side of nostalgia.

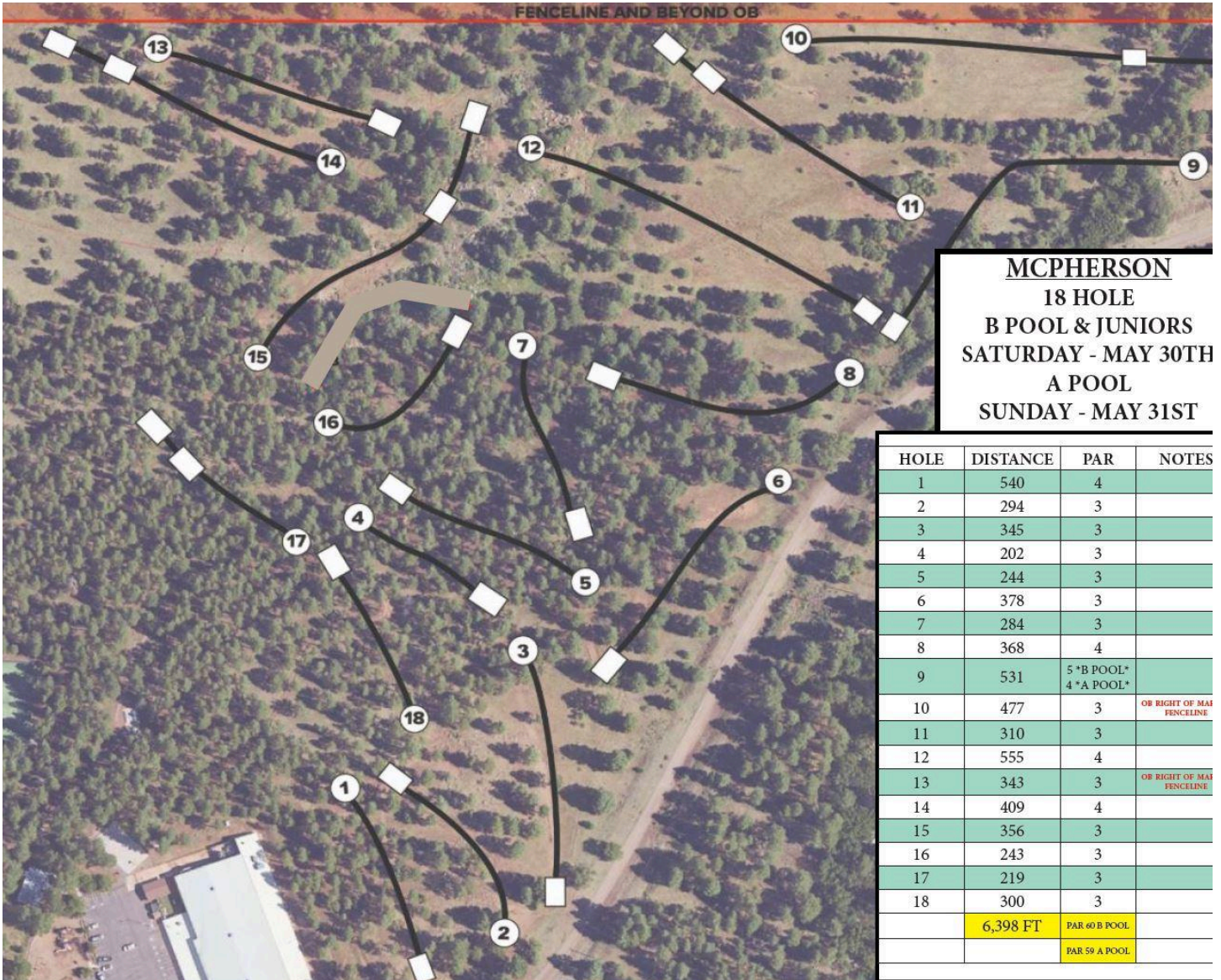
A happy time filled with great food, drinks, laughter, and community will be had by all, followed by raffle drawings, prizes, and a few surprises you won't want to miss!

Sunday, May 31, 2026

8:00am at [McPherson](#)
A Pool (MPO, FPO, MP40, MP50, MA1)

8:00am at [NAU](#)
B Pool (FP40, FP50, FP60, FA1, MA2, FA2, MA3, FA3, MA40, FA40, MA50, FA50, MA60, FA60, MA70, FA70, & JUNIORS)

Course Maps



THORPE PARK

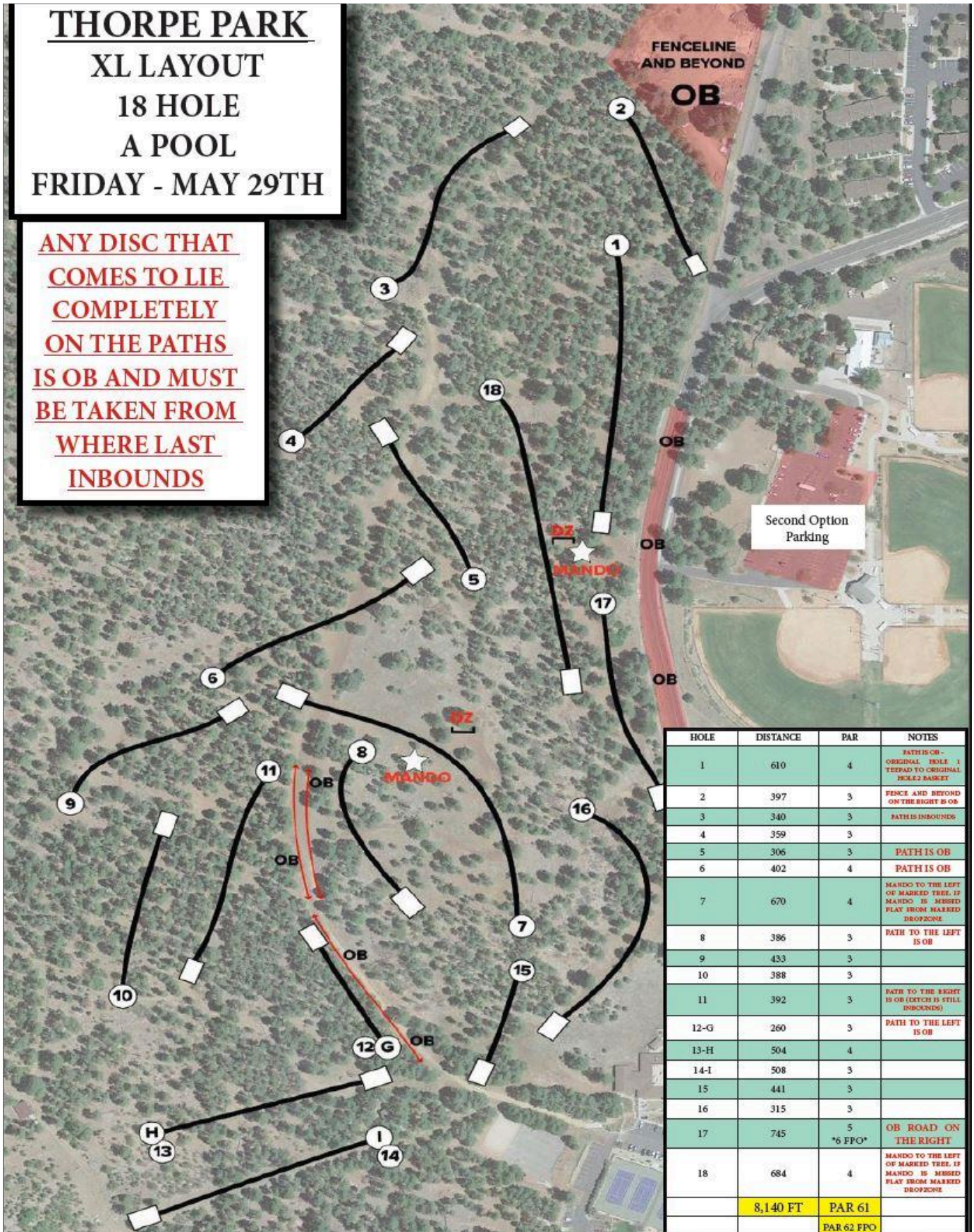
XL LAYOUT

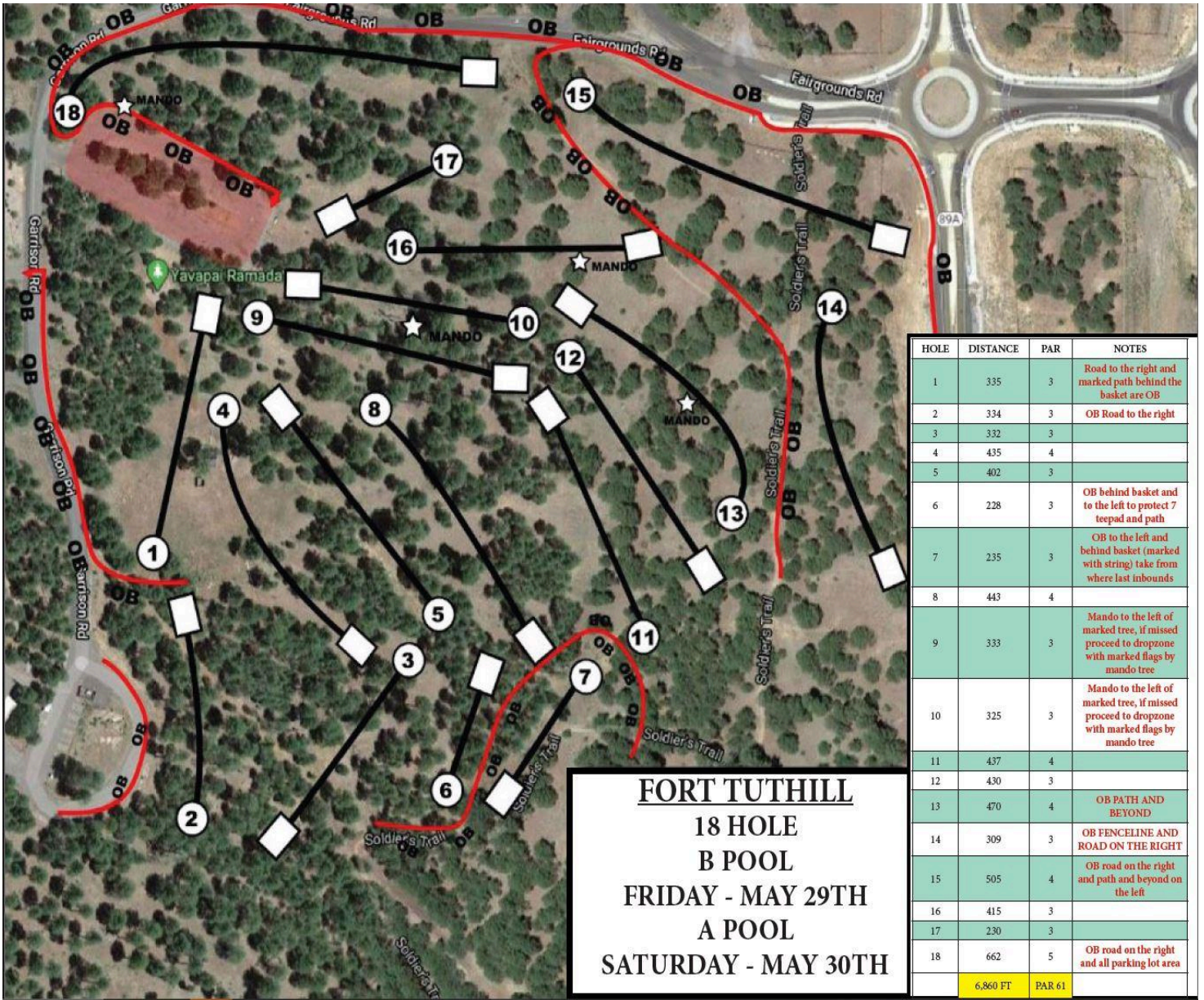
18 HOLE

A POOL

FRIDAY - MAY 29TH

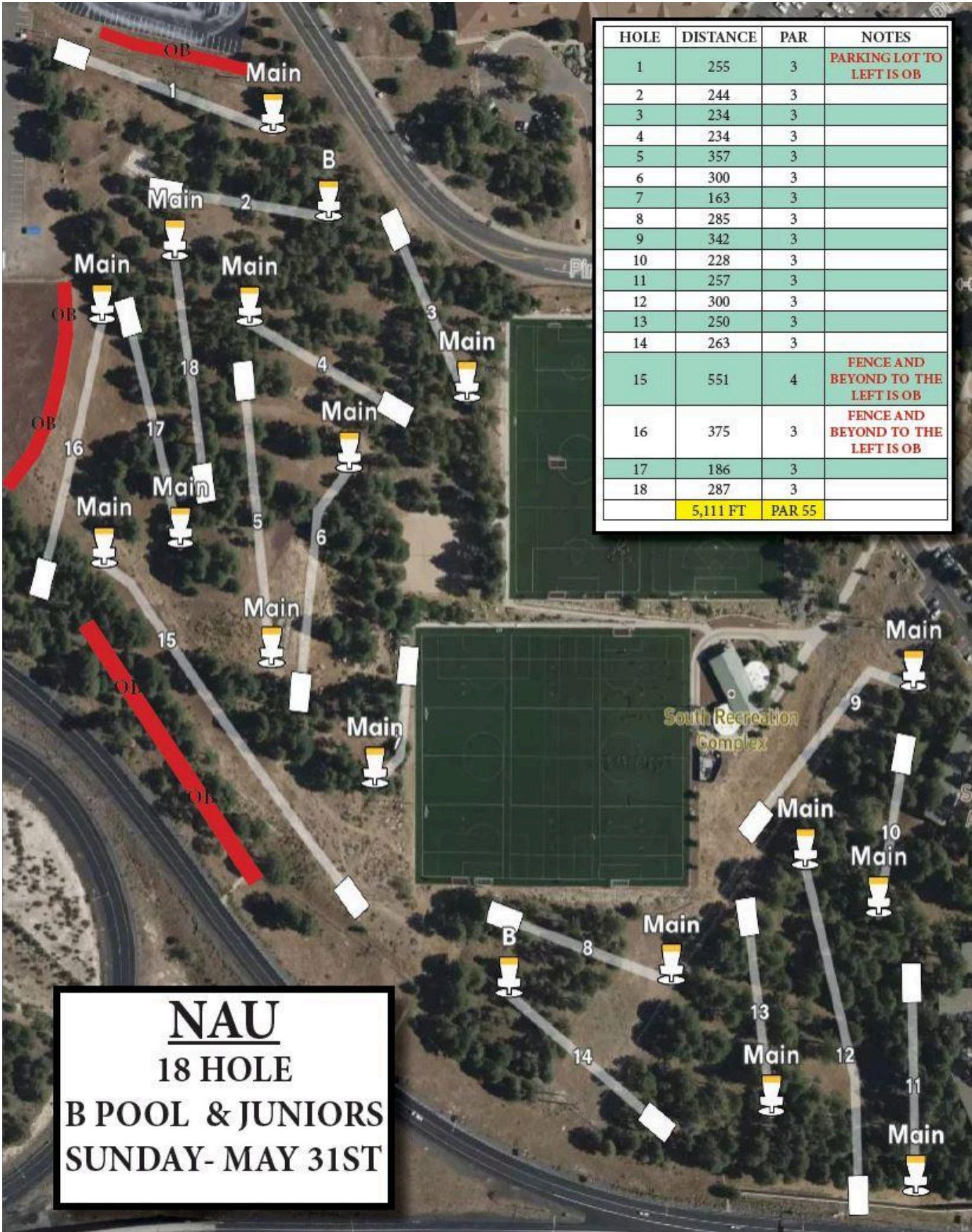
ANY DISC THAT COMES TO LIE COMPLETELY ON THE PATHS IS OB AND MUST BE TAKEN FROM WHERE LAST INBOUNDS





FORT TUTHILL
18 HOLE
B POOL
FRIDAY - MAY 29TH
A POOL
SATURDAY - MAY 30TH

HOLE	DISTANCE	PAR	NOTES
1	335	3	Road to the right and marked path behind the basket are OB
2	334	3	OB Road to the right
3	332	3	
4	435	4	
5	402	3	
6	228	3	OB behind basket and to the left to protect 7 teepad and path
7	235	3	OB to the left and behind basket (marked with string) take from where last inbounds
8	443	4	
9	333	3	Mando to the left of marked tree, if missed proceed to dropzone with marked flags by mando tree
10	325	3	Mando to the left of marked tree, if missed proceed to dropzone with marked flags by mando tree
11	437	4	
12	430	3	
13	470	4	OB PATH AND BEYOND
14	309	3	OB FENCELINE AND ROAD ON THE RIGHT
15	505	4	OB road on the right and path and beyond on the left
16	415	3	
17	230	3	
18	662	5	OB road on the right and all parking lot area
6,860 FT		PAR 61	



HOLE	DISTANCE	PAR	NOTES
1	255	3	PARKING LOT TO LEFT IS OB
2	244	3	
3	234	3	
4	234	3	
5	357	3	
6	300	3	
7	163	3	
8	285	3	
9	342	3	
10	228	3	
11	257	3	
12	300	3	
13	250	3	
14	263	3	
15	551	4	FENCE AND BEYOND TO THE LEFT IS OB
16	375	3	FENCE AND BEYOND TO THE LEFT IS OB
17	186	3	
18	287	3	
	5,111 FT	PAR 55	

NAU
18 HOLE
B POOL & JUNIORS
SUNDAY- MAY 31ST

NO SMOKING ON OR NEAR THE COURSE

Any player or spectator witnessed smoking with an open flame and/or on the courses will be immediately disqualified from the event. There are no designated smoking areas on-site. If you choose to smoke, the only permitted location is inside your personal vehicle.

To be absolutely clear: if you are seen smoking on or near the course at any time during the event, you will be immediately disqualified without refund.

Stage 1 Fire Restrictions have started as of at 8:00 a.m. on Thursday, May 21.

Official information and updates on restriction stages can be found here:
Flagstaff [Fire Restriction Stages](#)

****REMEMBER TO CHECK IN 10 minutes prior to and be PRESENT AT HOLE 1, 5 minutes prior to your tee time to prevent a 2 stroke penalty**

***** This is an A Tier event and dress code will be enforced, professional athletic wear is required (no 100% cotton or cutoff tees)**

Thank you to everyone who chose to come to town for this event! We truly appreciate your participation and support. A special thank you to all of the community members who have helped clean up around the courses and to everyone volunteering throughout the tournament weekend.

Warm regards,
Yomira, Kady, Kalin, Michelle, Liam, and Tony

Good luck to everyone — start your round strong, play well, and most importantly, have fun out there!