

2026 LOVETTSTVILLE LADIES OPEN

A WOMEN'S GLOBAL EVENT TOURNAMENT

PRESENTED BY MVP DISC SPORTS

AND FLYING ACE FARMS DISTILLERY AND BREWERY

MAY 16, 2026

VIRTUAL PLAYERS' MEETING AND CADDIE BOOK

INTRODUCTION

- The staff of the 2026 Lovettsville Ladies Open would like to start by thanking each and every player for registering for this tournament. We hope that you enjoy yourself.
- If you have any ideas or suggestions on how we can make this tournament better in the future, please do not hesitate to reach out to one of the staff members with your suggestions.

THANK YOU TO OUR SPONSORS.

- MVP Disc Sports
- Flying Ace Farms Distillery
- WATS DGC
- NWDGC
- Evan and Violet Sullivan #79927 and 79928
- Rob Stark #98770

TOURNAMENT STAFF

- Tournament Director
 - Jason Hierwarter
 - (540) 881-0611
- Assistant Tournament Director
 - Aaron Brant
 - (980) 621-7011

GENERAL INFORMATION

- Tournament will play rain or shine
- Should there be a need to suspend play, tournament officials will notify all players via the Live Scoring app or in person, and will follow PDGA regulations regarding resuming play.

TOURNAMENT FORMAT

- This tournament will be 2 rounds at Lefty's Farm Course located at Flying Ace Distillery and Brewery in Lovettsville, VA.
- Divisions FJ10 and below will only play one round (morning round) in accordance with PDGA guidelines.
- Both rounds will be shotgun start.
- The tournament will be played on May 16, 2026, with the first round starting at 10:00am

SCOREKEEPING

- We will be using PDGA Live scoring for this tournament.
 - Access Code: LLO26
 - Access code is not case sensitive
- All players are required to maintain a scorecard independently for their group (808A)
 - PDGA Live Scoring App is the preferred method of score keeping for each player.
 - Paper score cards will be available at Tournament Central
 - Score cards (including paper cards) must be submitted within 30 minutes of the completion of their round. Players who do not submit their score card timely will receive a 2 stroke penalty (808F).

TOURNAMENT SCHEDULE

- Check in 9:00am-9:45am
 - 9:20 Optional Group Warm-up near pavilion
 - 9:30 Welcome from Series Staff
 - 9:40 Group Photo in front of Pavillion
- Round 1 10:00am-1:00pm
- Lunch 1:00pm-2:15pm (Time subject to change)
 - Lunch will be provided free of charge to all players, caddies and volunteers, thanks to generous donations from WATS DGC and fund raising from NWDGC!
- Round 2 2:30pm-5:30pm (Time subject to change)
- Awards Ceremony 6:00pm (Time subject to change)

PLAYER PACKS

- All Players (to include Pro Players) will receive a Tournament stamped MVP disc
 - Choose from these molds:
 - Eclipse Watt, Neutron Crave, Neutron Hex, Prism Plasma Pyro
- Am players will also receive the following, in addition :
 - 1 MVP Lab Second Disc
 - Tournament stamped waffle towel
 - PDGA mini marker disc
 - First 40 Am players to check in will also receive a Birdies and Blossoms bag tag.

PRIZES

- MVP Disc Sports has graciously donated several great items for prizes. We would ask that if you are able to receive any of the following prizes, that you share photos of them on social media, and tag MVP Disc Sports in appreciation for their support of Women's Disc Golf, and this tournament.
- Raffle tickets will be 1 ticket for \$5 or 5 tickets for \$20.
 - Axiom Voyager Lite – Watermelon Edition Disc Golf Bag.
 - MVP Black Hole Pro Disc Golf Basket
- CTP Prizes
 - MVP Cell shoulder disc golf bags. There will be a CTP for each division, which will each win a Cell bag.

LEFTY'S FARM COURSE

- Flying Ace Distillery and Brewery
- 40950 Flying Ace Ln, Lovettsville, VA 20180
- There is a restaurant and brewery on site with bathroom facilities available for players.
 - Players are encouraged to visit after the tournament to enjoy the brewery and hang out with fellow disc golfers
- There will be ample parking for all players.
- This is a private course and business. Please treat the property accordingly, so we have the opportunity to be invited back.
- NWDGC will be raising funds via raffle for future opportunities to grow the sport.



COURSE LAYOUT

- Following slides will detail the holes and specific rules for each hole for this tournament.
- As you look at the diagram, the white box indicates the long tee, which uses a blue turf pad. The blue dot indicates the short tee pad, which uses a green turf pad.
- With only a couple of exceptions, the long layout uses the long tees, and the short layout uses the short tees. Those exceptions are noted in the following slides, as well as on the Live Scoring app.
- There are a handful of holes which only have a single tee. Those will also be indicated accordingly.

COURSE LAYOUT, CONTINUED

- The long layout will be used by the following divisions
 - FPO, FP40, FP50, FA1, FA40
- The short layout will be used by the remaining divisions.
- There will be a Par 54 modified short layout exclusively for the younger Juniors divisions. They will be designated with Pink Flags in each fairway to indicate their Tee Boxes, with the exception of Holes 1 and 10, which will use the existing Drop Zones as their Tee boxes.

HOLE 1

PAR 3

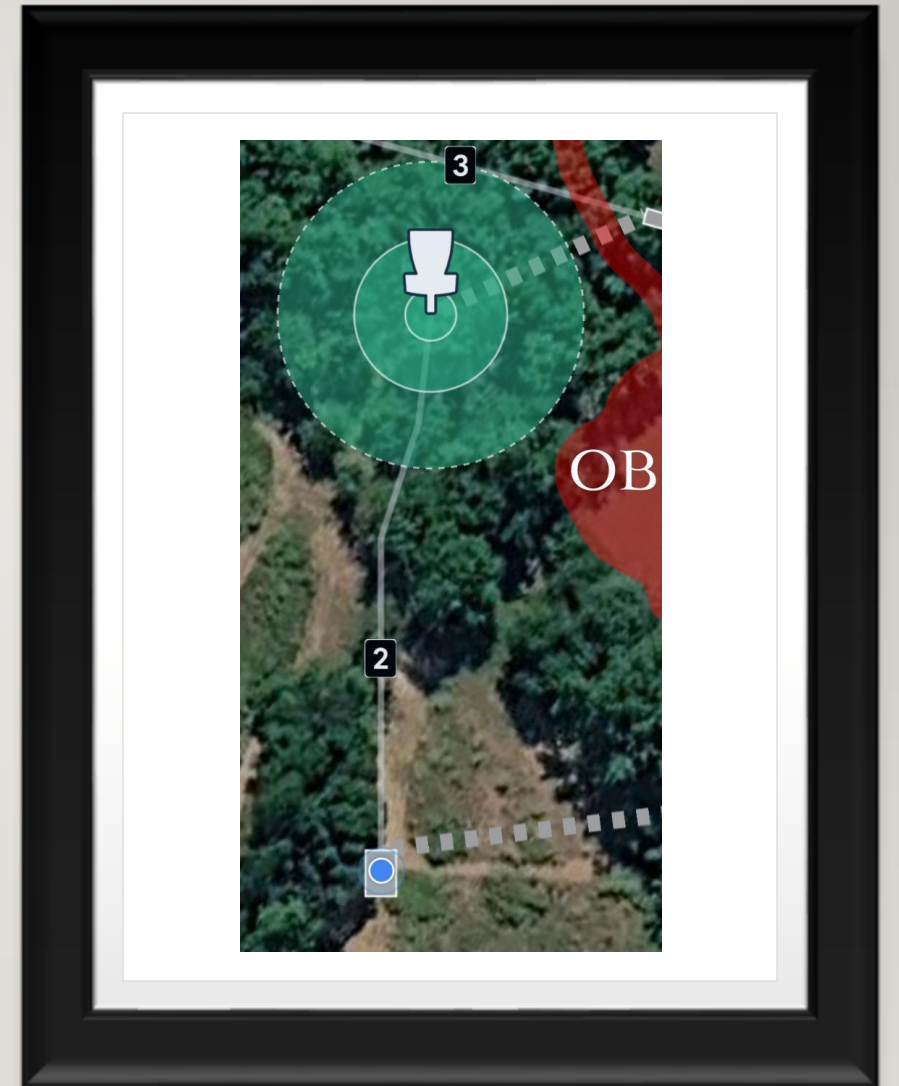


- Blue Tee Pad 343'
- Green Tee Pad 157'
- Pond OB. Disc must be completely surrounded by water. Proceed to Drop Zone with a penalty stroke. 806.02

HOLE 2

PAR 3

- Blue Tee Pad Only 231'
- Pond OB 806.02
- Water in creek bed plays casual 806.03B



HOLE 3 PAR 3 275'

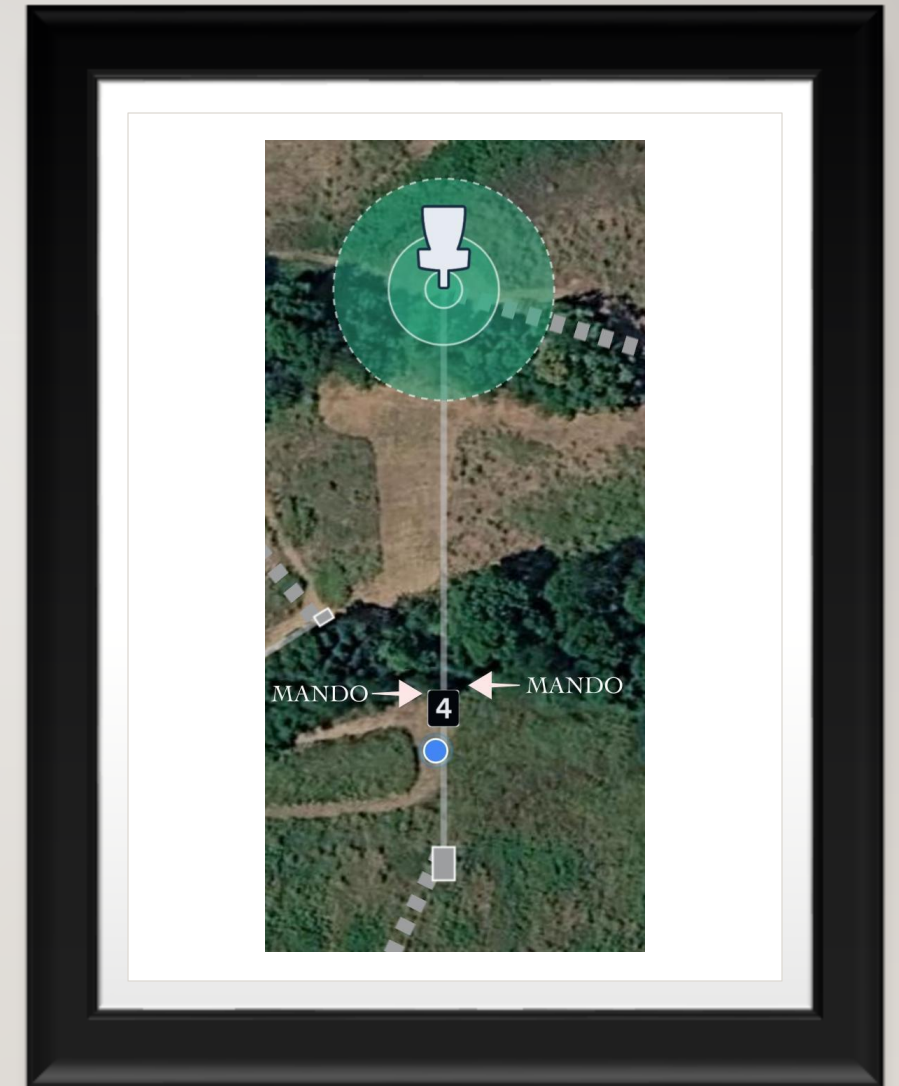


- Green Tee Pad will be used by all divisions
- Mando Right as marked on tree 804.01

HOLE 4

PAR 3

- Blue Tee Pad 350'
- Green Tee Pad 265'
- Double Mando: Disc must travel between Mando trees as marked at the first tree line. 804.01



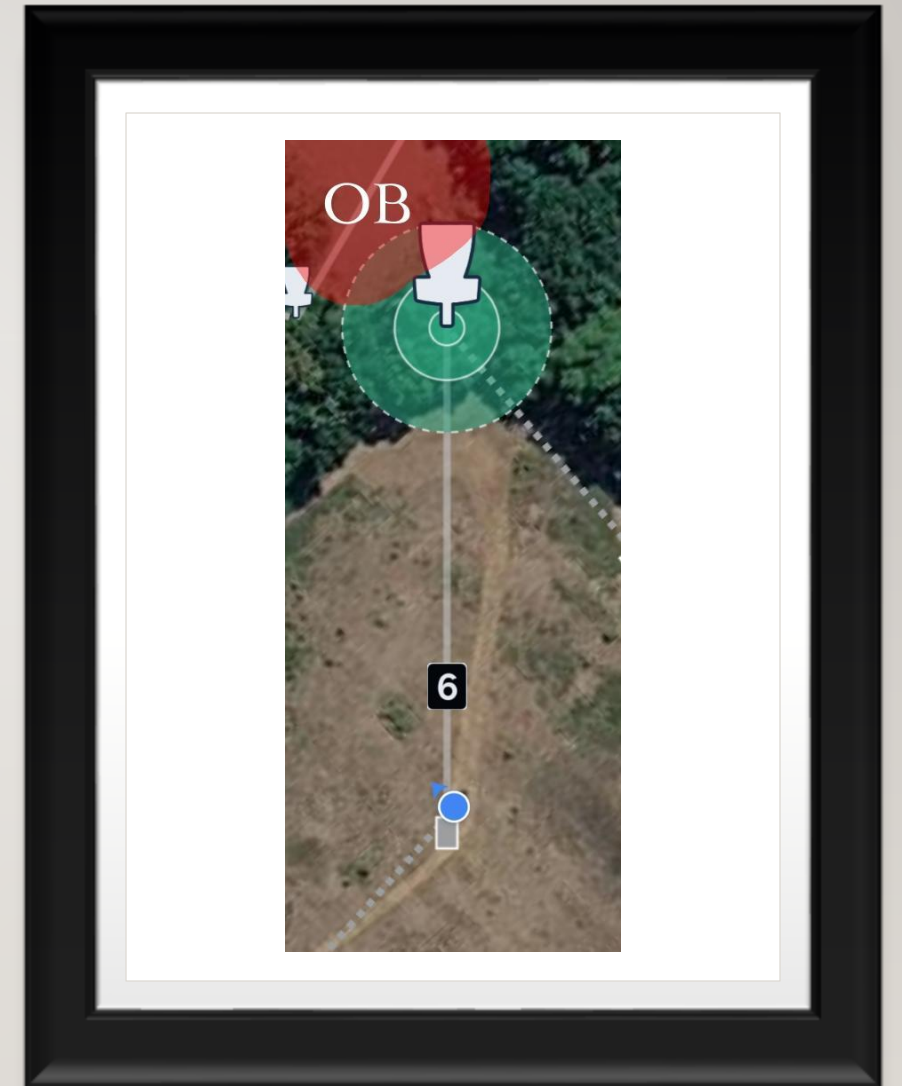
HOLE 5 PAR 3



- Blue Tee Pad 320'
- Green Tee Pad 250'

HOLE 6 PAR 3 307'

- Blue Tee Pad Only
- Pond is OB 806.02



HOLE 7 PAR 3 320'

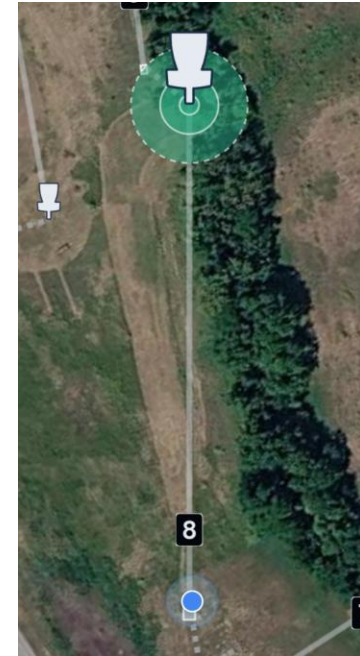


- Blue Tee Pad Only
- Water in creek plays casual 806.03B
- Required Relief Areas: If disc comes to rest on the Septic structure, any of the round septic covers, or the pile of scrap wood, players must take relief, without penalty. 806.04

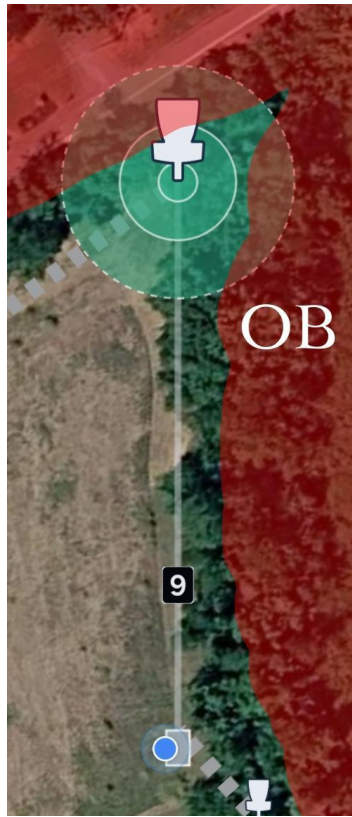
HOLE 8

572'

- Blue Tee Pad will be used by all divisions
- Long Layout Par 4
- Short Layout Par 5



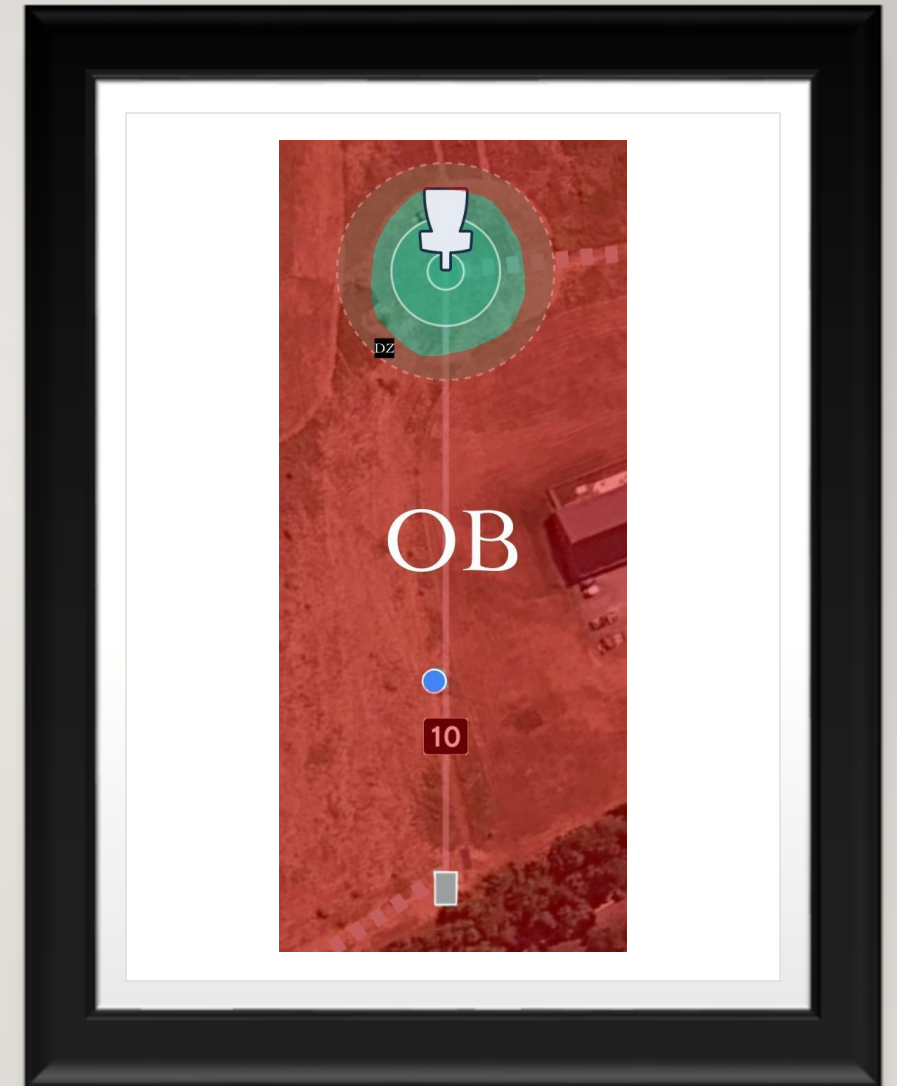
HOLE 9 PAR 3 310'



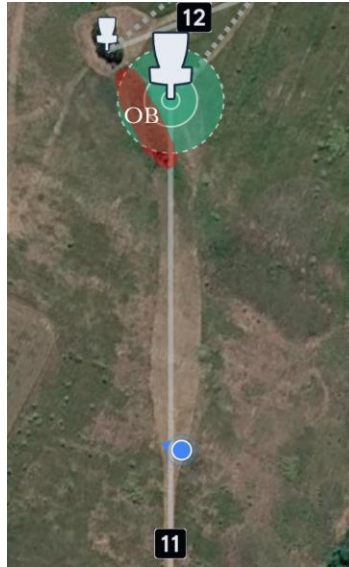
- Blue Tee Pad Only
- OB Creek and beyond on right;
- OB road and beyond, behind Circle I 806.02

HOLE 10 PAR 3

- Blue Tee Pad 363'
- Green Tee Pad 260'
- Island Green. Outside Island is OB 806.02
 - If tee shot does not come to rest inside Island, player shall proceed to Drop Zone to throw, with penalty.



HOLE 11 PAR 4 460'



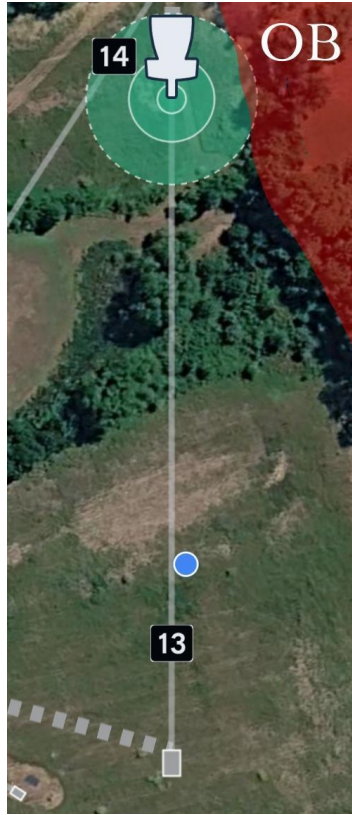
- Green Tee Pad will be used by all divisions
- Tree patch and shrubbery on left, OB as marked 806.02

HOLE 12 PAR 3 199'

- Blue Tee Pad Only
- Tree patch and shrubbery from Hole 11, OB as marked. 806.02



HOLE 13 PAR 4



- Blue Tee Pad 500'
- Green Tee Pad 375'
- Metal fence and beyond OB 806.02
 - This fence is along the property line. If your disc crosses over to the neighboring property DO NOT RETRIEVE IT YOURSELF! Let one of the tournament staff know, and we will arrange to have your disc returned.

HOLE 14 PAR 3

- Blue Tee Pad 415'
- Green Tee Pad 275'



HOLE 15 PAR 3 270'

- Blue Tee Pad Only



HOLE 16

690'

- Green Tee Pad will be used by all divisions
- Long Layout Par 4
- Short Layout Par 5
- Required Relief Area on right.
 - If disc comes to rest in the required Relief area, play disc where it crossed as you would OB, WITHOUT penalty. 806.04
- OB Right metal fence and beyond on right 806.02
 - This fence is along the property line. If your disc crosses over to the neighboring property DO NOT RETRIEVE IT YOURSELF! Let one of the tournament staff know, and we will arrange to have your disc returned.



HOLE 17 PAR 4 375'



- Green Tee Pad will be used by all divisions

HOLE 18 PAR 4

- Blue Tee Pad 541'
- Green Tee Pad 350'
- Beyond tree line, there is a small landing zone. Outside landing zone and outside Island Green is Hazard. Play disc where it lands with a penalty stroke 806.05
- Inside White Picket Fence on right OB 806.02



TIE BREAKERS

- In the event that a division finishes competition and there is a tie for 1st place, there will be a sudden death playoff in accordance with CM I.09.B.
- The playoff holes will be Holes 8, 9, and 10 of each division's respective layout, repeating in a loop, until a winner is determined.
- In divisions that will award a 2nd place trophy, ties for 2nd place will be broken for the **SOLE** purpose of issuing out the 2nd Place trophy.

TROPHIES

- Trophies will be awarded based on the division size.
 - Divisions with less than 5 players will only have a 1st place trophy
 - Divisions with 5-12 players will have 1st and 2nd place trophies
 - Divisions with more than 12 players will have 1st, 2nd, and 3rd place trophies awarded.
- All divisions will be awarded a 1st place trophy, regardless of number of players.
- Trophies will be Beer glasses
 - Division winners are invited to take their Champion's Trophy glass into the bar and enjoy one free beer of choice, courtesy of Flying Ace Brewery and Distillery.
- Pro divisions will have \$500 added cash for this tournament.
 - All payouts will be handed out in cash at the tournament during the awards presentation.

THANK YOU

- Once again, the tournament staff would like to thank you for playing in this year's Lovettsville Ladies Open presented by MVP Disc Sports and Flying Ace Distillery and Brewery, and look forward to seeing everyone at Tournament Central!

WHAT'S NEXT?

- The Birdies and Blossoms tour continues on for 2026! Check out our remaining tournaments.
 - Saturday June 27th Queens of the Hill Charlottesville, VA
 - Saturday July 11th Millbrook Metamorphosis Churchville, MD
 - Saturday August 15th Lilies of the Valley Harpers Ferry, WV
 - Saturday October 17th Women9 Gaithersburg, MD
- www.discgolfscene.com/series/37508/birdies-and-blossoms-womens-disc-golf-series

