

2026 Spring Fling @ Sunset Park Caddy Book

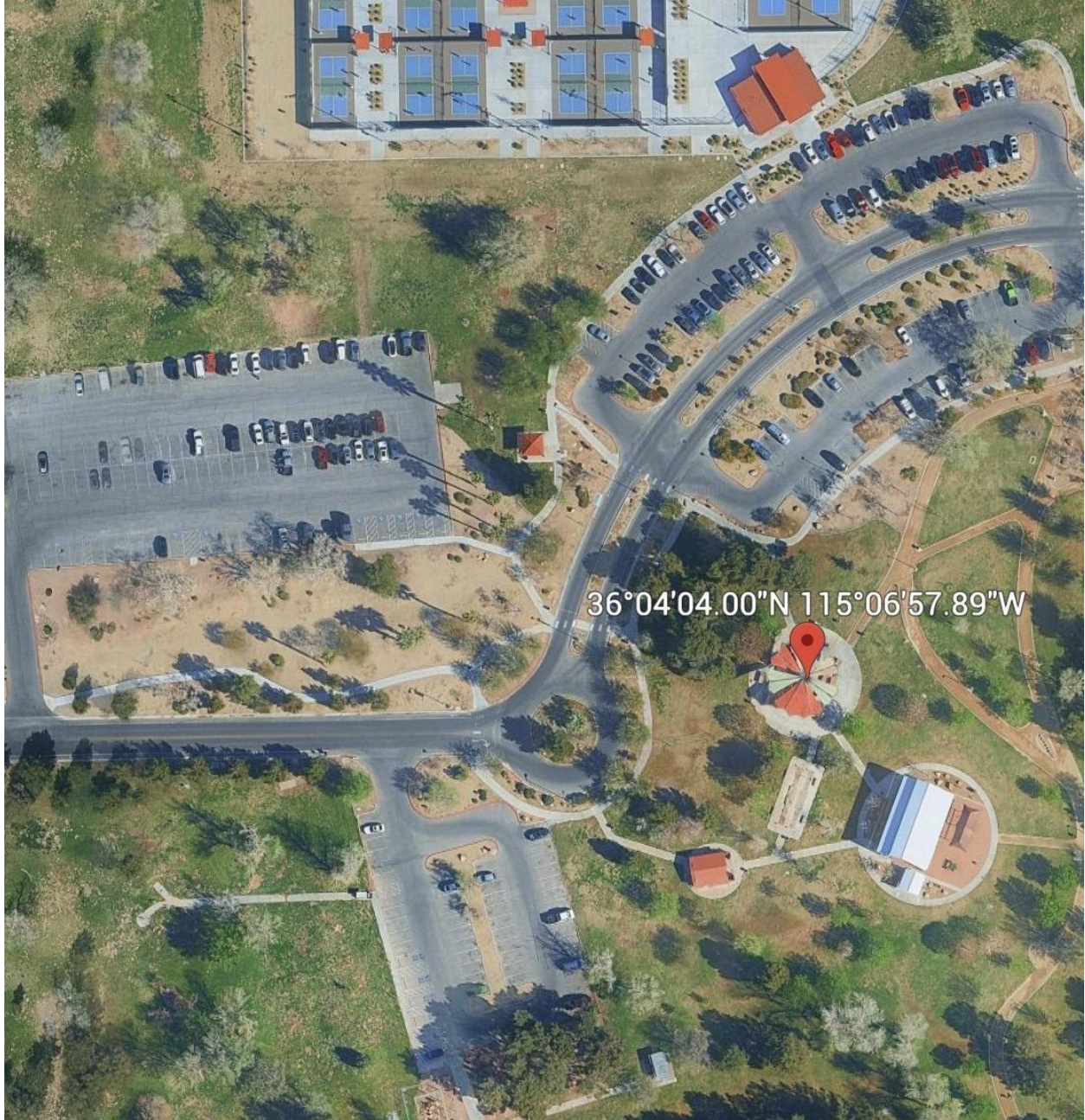
Hello all and welcome to the 2026 Spring Fling @ Sunset Park Presented by Player Two Disc Golf!

This is your official caddy book for the event! Please give it a quick read through before the tournament. If you have any questions about the event, please reference this first. If your question isn't answered here, feel free to give me a call or text at 719-465-4065.

CHECK-IN

We have rented the Bristlecone seating area for check-in/tournament central. See the Google Maps link below to find your way!

https://maps.app.goo.gl/FHKAjXP2bfTM1XTR9?g_st=ic



GENERAL INFO

This is a PDGA Sanctioned C-Tier event, so I want to highlight a few important rules here:

- Do not throw if your shot can hit another player or spectator. Wait until it is clear!
- Assist with finding lost discs and for rate of play, please make sure all players on the card look and a 3 minute timer has been started.
- All players **MUST KEEP SCORE**. The preferred method for this is PDGA Live Scoring, which can be done through the PDGA app, or pdga.com/scores. The live scoring code is **FLING2026**. Scoring can also be done through UDisc or paper.
- Please use provisionals if necessary!
- All mandatories will have a spray painted line on the opposite side of the intended fairway. If your disc crosses this line at any point of it's flight, even if it initially crosses on the correct side of the mando, it is deemed a missed mando. Proceed to the drop zone with a stroke penalty.

SCHEDULE AND POOLS

This is a 2-round tournament, with a lunch break in between rounds. The 2nd round will start 1 hour after the last group on the course has submitted scores from the 1st round.

- Check-in: 8:00-8:30am
- Player's Meeting: 8:30am
- Round 1 Start Time: 9:00am
- Lunch (est.): 12:00pm-1:00pm
- Round 2 Start Time (est): 1:00pm-4:00pm
- Awards (est.): 4:00pm

A Pool: MPO, FPO, MP40, MP50, MA1, MA40, MA2

B Pool: All other divisions

COURSE INFO

- Please note that many of the baskets are temporary! It is the player's responsibility to know the course layout, so please double check the course notes and/or UDisc if your card is unsure. The permanent baskets that are not being used for the tournament layout are NOT going to be covered. Once again, feel free to reach out to me during the rounds if you have any questions! 719-465-4065
- The best way to navigate the course is through UDisc! Since there are 2 pools and the course is changing in between rounds, there are 4 layouts in UDisc.

HOLE-BY-HOLE BREAKDOWN

Hole 1

Par 3

Short Tee (B Pool): 240ft Long Tee (A Pool): 280ft

Area between concrete curb and pickleball courts is hazard. Pickleball courts are OB. Parking lot is OB

Hole 2

Par 3/4/5

Short Pin (Rd 1): 320ft Long Pin (Rd 2): 700ft

Mando left of marked pole. If missed mando, proceed to drop zone with stroke penalty. Concrete curbing and beyond is OB. Area between concrete curb and pickleball courts is hazard. Pickleball courts are OB

Hole 3

Par 3/4

420ft

Concrete curbing and beyond is OB. Baseball fields and beyond are OB. Sidewalk long and beyond is OB

Hole 4

Par 4

450ft

Mando left of marked tree. If missed mando, proceed to drop zone with stroke penalty. Baseball fields and beyond are OB. Parking lots and beyond are OB. Concrete curbing and beyond is OB. Concrete driveway is safe, OB line is delineated by red curbing

Hole 5

Par 3

360ft

Baseball fields and beyond are OB. Fence right and beyond is OB. Sidewalk and beyond is OB. Concrete curbing and beyond is OB

Hole 6

Par 3/4

Long Pin (Rd 1): 480ft Short Pin (Rd 2): 430ft

Concrete curbing and beyond is OB

Hole 7

Par 4

Short Tee (B Pool): 450ft Long Tee (A Pool): 590ft

Concrete curbing and beyond is OB

Hole 8

Par 3/4

Short Pin (A Pool): 280ft Long Pin (B Pool): 640ft

Concrete curbing and beyond is OB. Parking lot and beyond is OB

Hole 9

Par 6

Short Tee (B Pool): 950ft Long Tee (A Pool): 1200ft

Mando right of marked tree. If missed mando, proceed to drop zone with stroke penalty. Concrete curbing and beyond is OB. Baseball

fields and beyond are OB. Bathrooms and surrounding concrete is OB. Volleyball court is OB

Hole 10

Par 3

280ft

Baseball fields and beyond are OB. Concrete curbing and beyond is OB

Hole 11

Par 3/4

460ft

Parking lot and beyond is OB. Sidewalk long and beyond is OB

Hole 12

Par 3

300ft

Baseball fields and beyond are OB. Sidewalk and beyond is OB

Hole 13

Par 3

340ft

Baseball fields and beyond is OB. Concrete curbing and beyond is OB

Hole 14

Par 3

260ft

Baseball fields and beyond are OB. Concrete curbing and beyond is OB

Hole 15

Par 3

340ft

Baseball fields and beyond are OB. Sidewalk long, right, and beyond is OB. Gazebo and surrounding concrete is OB

Hole 16

Par 3/4

380ft

Concrete curbing and beyond is OB. Sidewalk right and beyond is OB. Parking lot and beyond is OB. Sidewalk in fairway is safe

Hole 17

Par 3

200ft

ISLAND HOLE! If drive does not come to rest within island, proceed to drop zone with stroke penalty. Normal OB rules apply after drop zone shot is thrown.

Hole 18

Par 3

250ft

**Parking lot and beyond is OB. Sidewalk right and beyond is OB.
Gazebo area is OB. Xeriscape is safe**