



305 ft

Par 3

**Mando left of the marked tree,
re-tee if missed (804.01).
Volleyball court and area
beyond marked line is OB
(806.02).**





2

588 ft
Par 4

**Left sidewalk and beyond
is OB (806.02).**





3

551 ft

Par 4

Sidewalk River (marked) is a Hazard, play where it lies with +1 stroke. Right mando only at top of hill, play from marked drop zone if missed (804.01).





4

403 ft
Par 3

**If teepad is wet/slick,
tee-off on sidewalk
marked by white dots.
Basketball court OB
(806.02).**



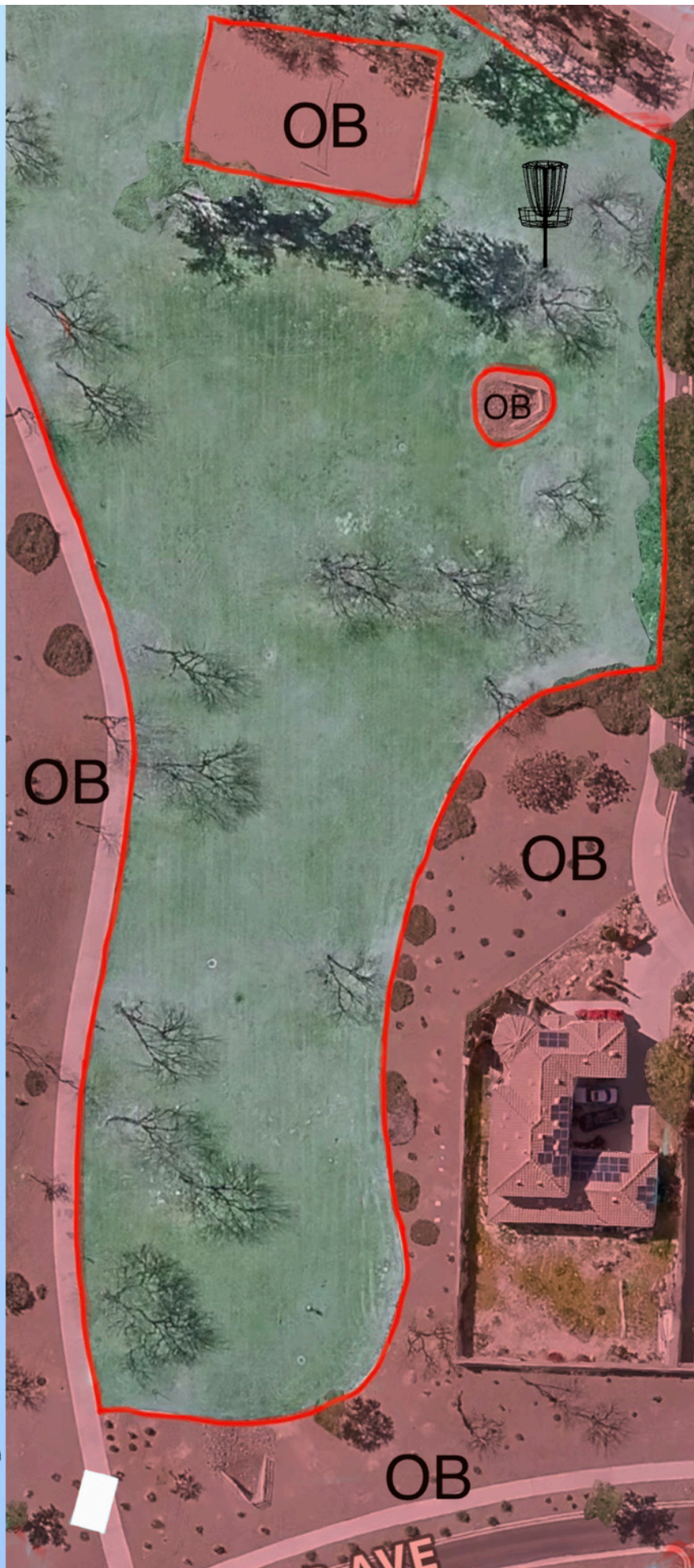


5

448 ft

Par 4

**Alternate tee box on sidewalk
marked by white dots.
Volleyball court is OB (806.02).**





6

488 ft

Par 4





7

494 ft

Par 4

**If teepad is wet/slick, tee
off directly behind teepad
on pavement.**



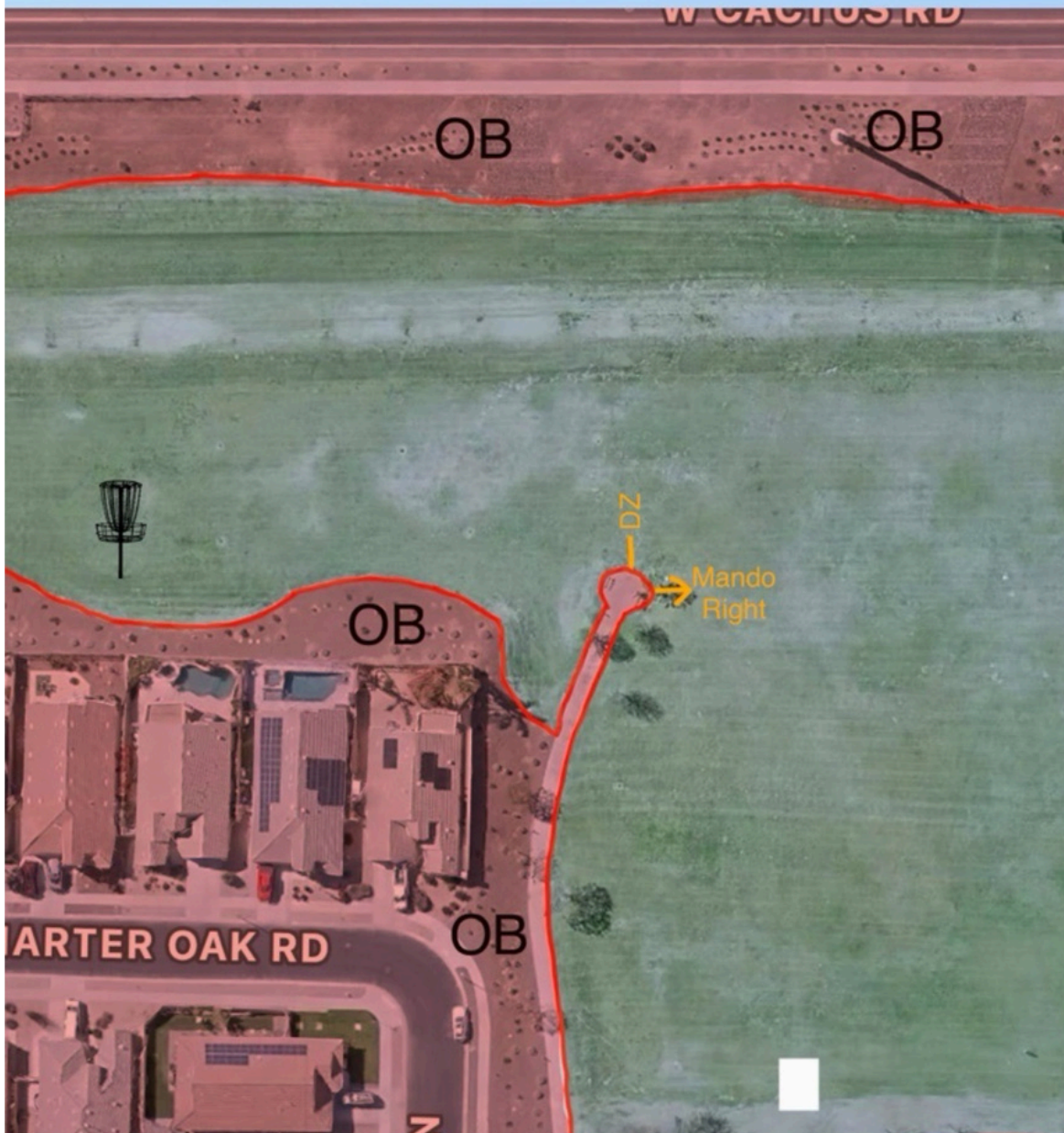


515 ft

Par 4

8

Mando right of the tree at end of path, play from marked drop zone if missed (804.01).





9

615 ft

Par 4

Overgrown rock area near
10's teepad is in bounds.
Play where it lies.

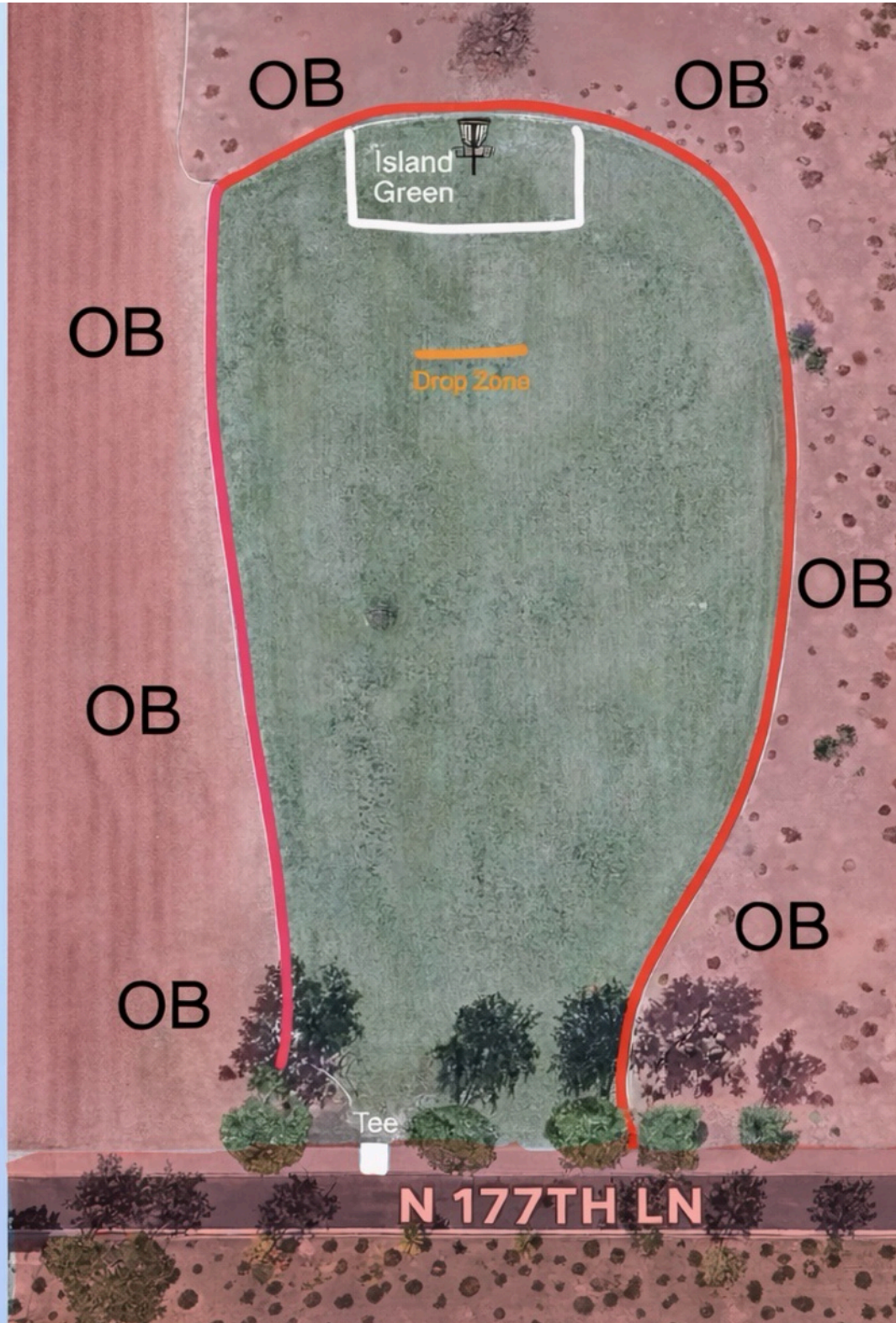




9A

254 ft
Par 3

Island Green: Any throw from the Tee must come to rest on the Island Green to be able to mark on the Island Green. Throws from the Tee that don't come to rest on the Island Green must proceed to the Drop Zone with a penalty throw. All other throws use normal OB rules.

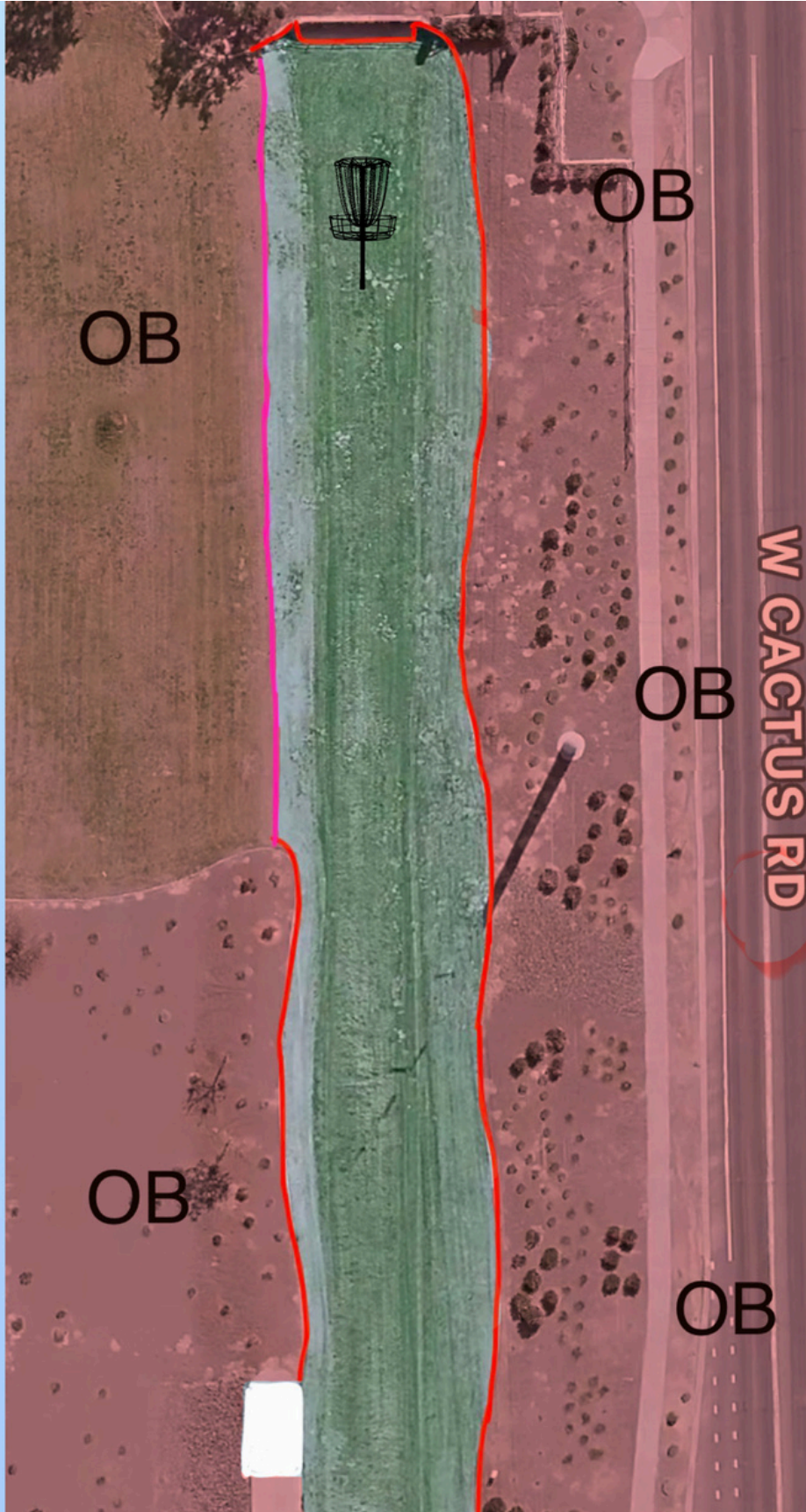




9b

338 ft

Par 3

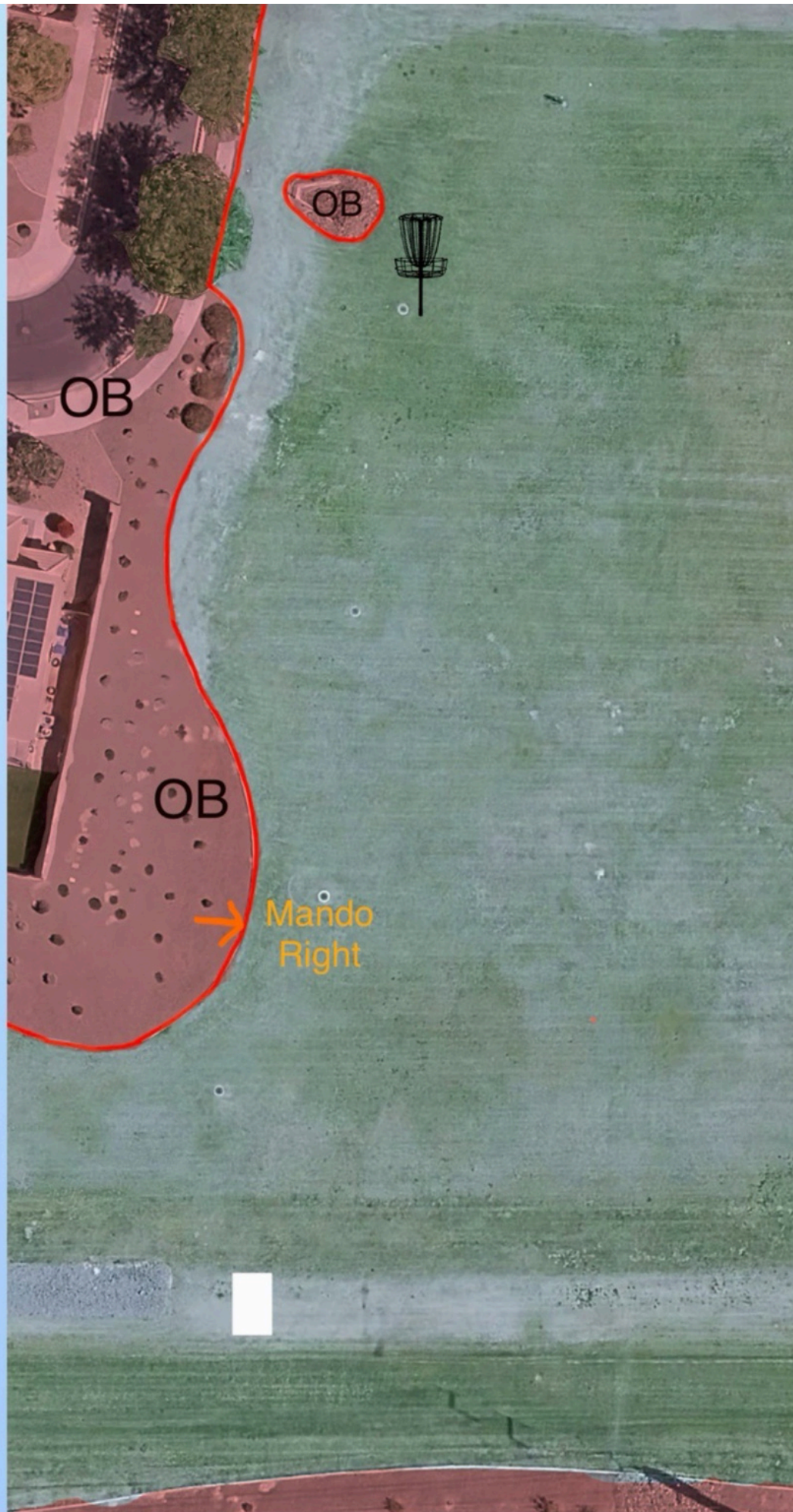




10

308 ft
Par 3

**Mando right of pole, re-tee
if missed (804.01)**





11

418 ft

Par 3





12

323 ft

Par 3





13

370 ft

Par 3





14

330 ft

Par 3

Double mando, play from marked shared drop zone if missed (804.01).





15

312 ft

Par 3

Double mando, play from marked shared drop zone if missed (804.01).





16

276 ft

Par 3

If teepad wet/slick, tee-off from sidewalk directly behind teepad. Double mando, re-tee if missed (804.01). Left sidewalk and beyond is OB (806.02).



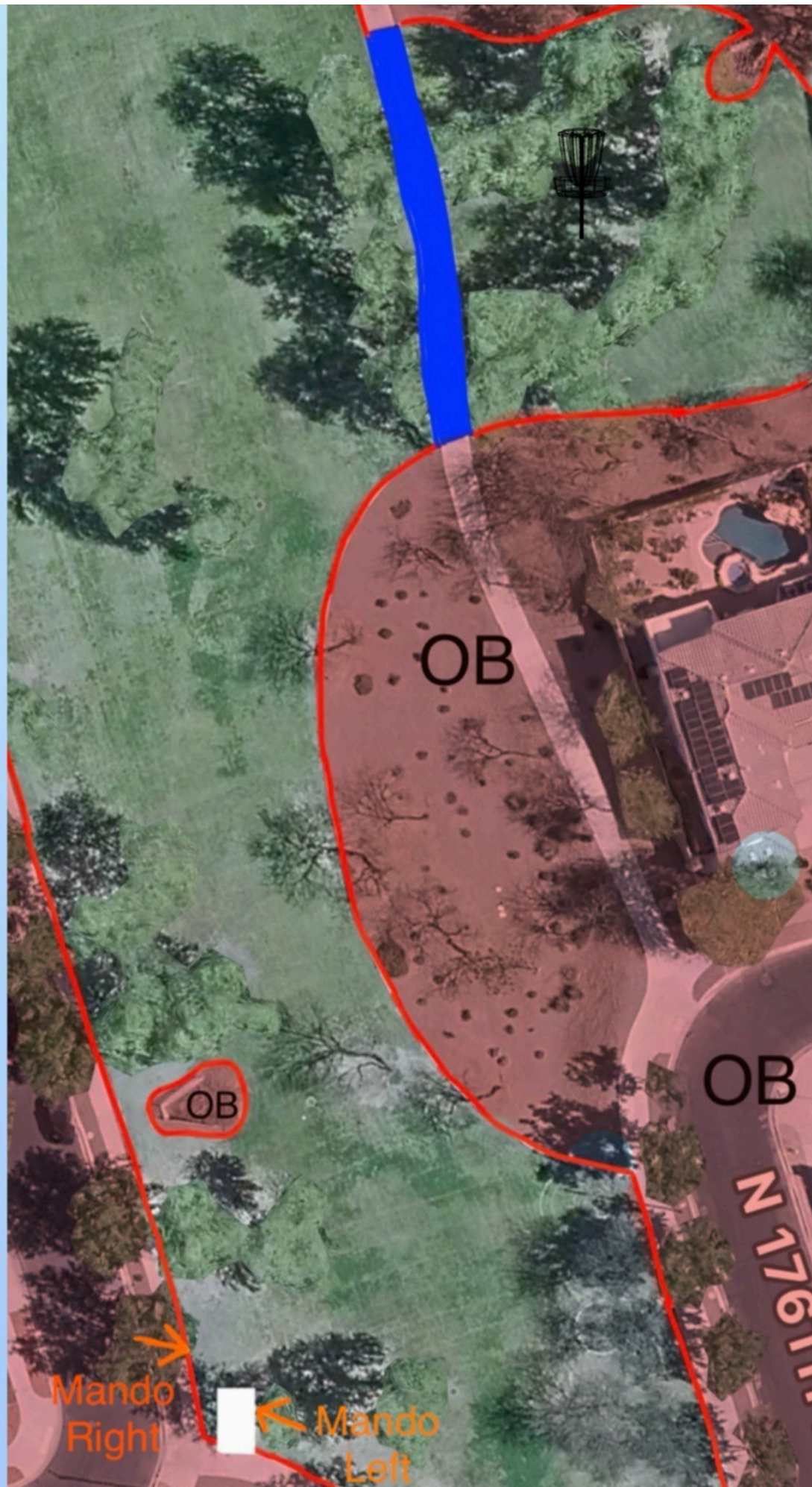


17

386 ft

Par 3

If teepad wet/slick, tee-off from sidewalk directly behind teepad. Double mando, re-tee if missed (804.01). Sidewalk River (portion between grass fairways) is a Hazard, play where it lies +1 stroke (806.05).





18

316 ft

Par 3

Double-Double mando. If first set of double mandos are missed, play from its corresponding marked drop zone. If second set of double mandos are missed, play from its corresponding marked drop zone. (804.01).

