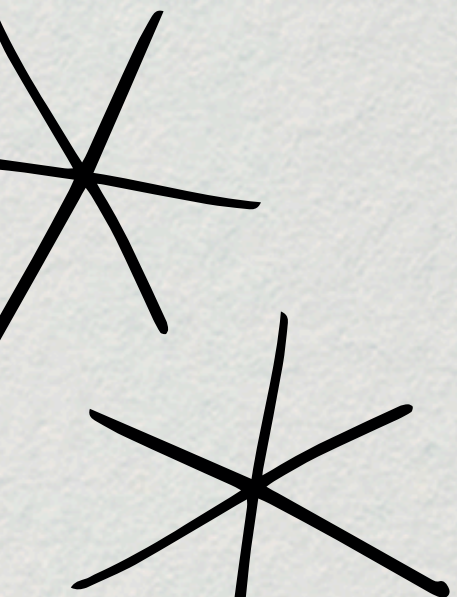


Valley Park Caddy Book

Putting the Pieces Together

Presented by MVP Disc Sports and Martin's
Peterbilt



SCHEDULE

APRIL 23-26

Thursday

Early Player Check in
Players Pack Pickup at
Maddog Disc Shop

3PM - 6PM

Friday

C Tier Flex Start at Valley Park
Flex Start BYOP at Bridge Park
All Star Layout

12:30PM - 4:30PM

2:30PM - 5:30PM

Saturday

Round 1
Round 2 (Tentatively)
Payouts and Award Ceremony

9:15AM - 12:00PM

1:00PM - 3:45PM

3:45PM

Sunday

Champs Vs Chumps for
CARES

2PM - 4PM

For more information, visit Dgscene.com/PTPT26



GENERAL INFORMATION

PDGA Live Scoring Code:

PTPT

Divisions in Pool B

Round 1 - F9 Longs B9 Shorts

Round 2 - Shorts

FA1 MA2 MA3 MA50

Divisions in Pool C

Rounds 1&2 - Shorts

FA4 MA4 MA60

Divisions in Pool D

Rounds 1&2 - Modified Shorts

MJ12 MJ15

Tourney Staff Contact Information

***Tournament
Director***

Seth Lewis

304-400-9097

PUTNAMCCDG@GMAIL.COM

Asst. TD

Jonathan Wright

606-356-6332

MADDOGDISCSHOP@OUTLOOK.COM



General Course Rules

Out of Bounds is defined by the following:

White Stakes

Sidewalk/Asphalt
and Beyond

Fence

White Paint

Pond

Hazard on Hole 15 is defined by the following:

Wood Outline

Mandatory's are on the following holes:

Hole 2

Hole 7

Hole 12

Hole 14

Hole 15

Hole 16

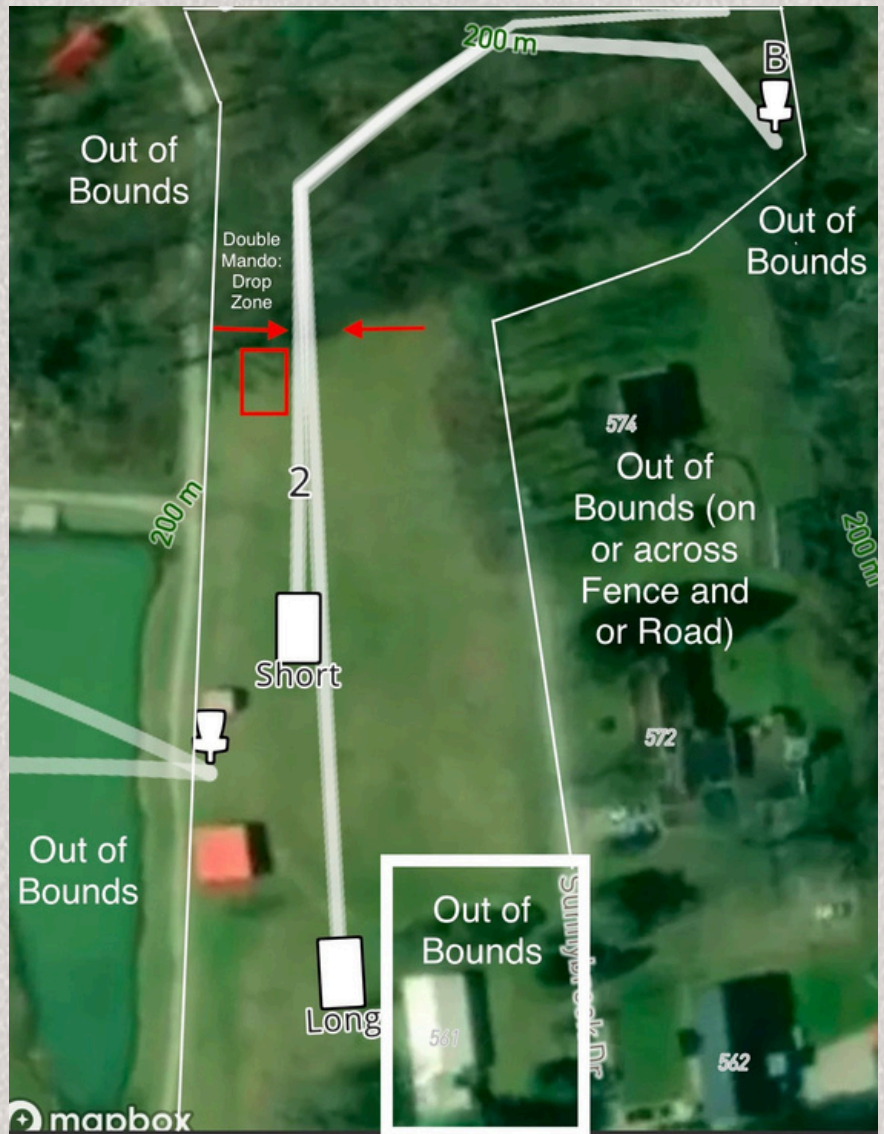
Hole 18

Hole 1: Long - Par 4 - 560 ft.
Short - Par 3 - 242 ft.
Modified Short - Par 3 - 110 ft.



POOL D (MJ12 AND MJ15) TEES FROM THE DROP ZONE

**Hole 2: Long - Par 5 - 720 ft.
 Short - Par 4 - 537 ft.
 Modified Short - Par 4 - 350 ft.**



Double Mando: If missed, proceed to DZ

Out of Bounds:

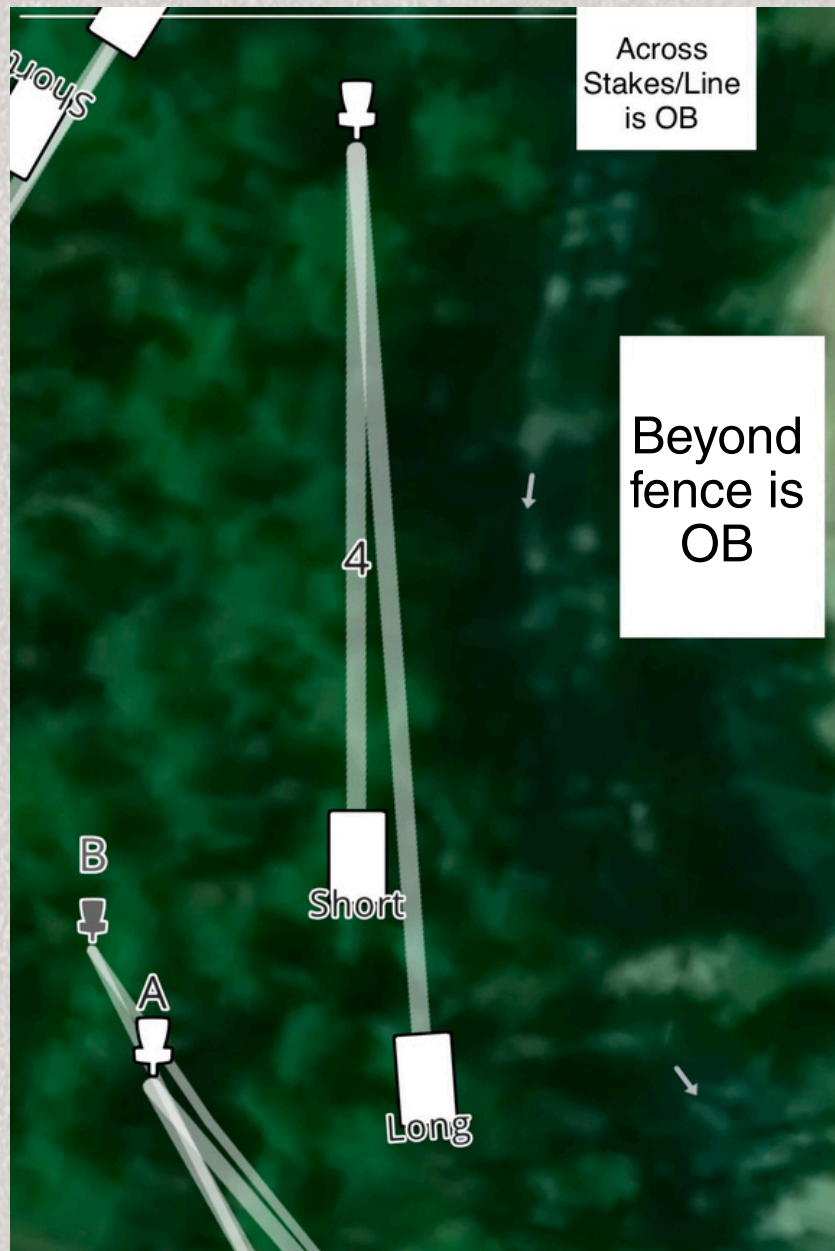
Left of Painted line, Beyond White Stakes (Creek), on or across road on right and Fences

POOL D (MJ12 AND MJ15) TEES FROM THE DROP ZONE

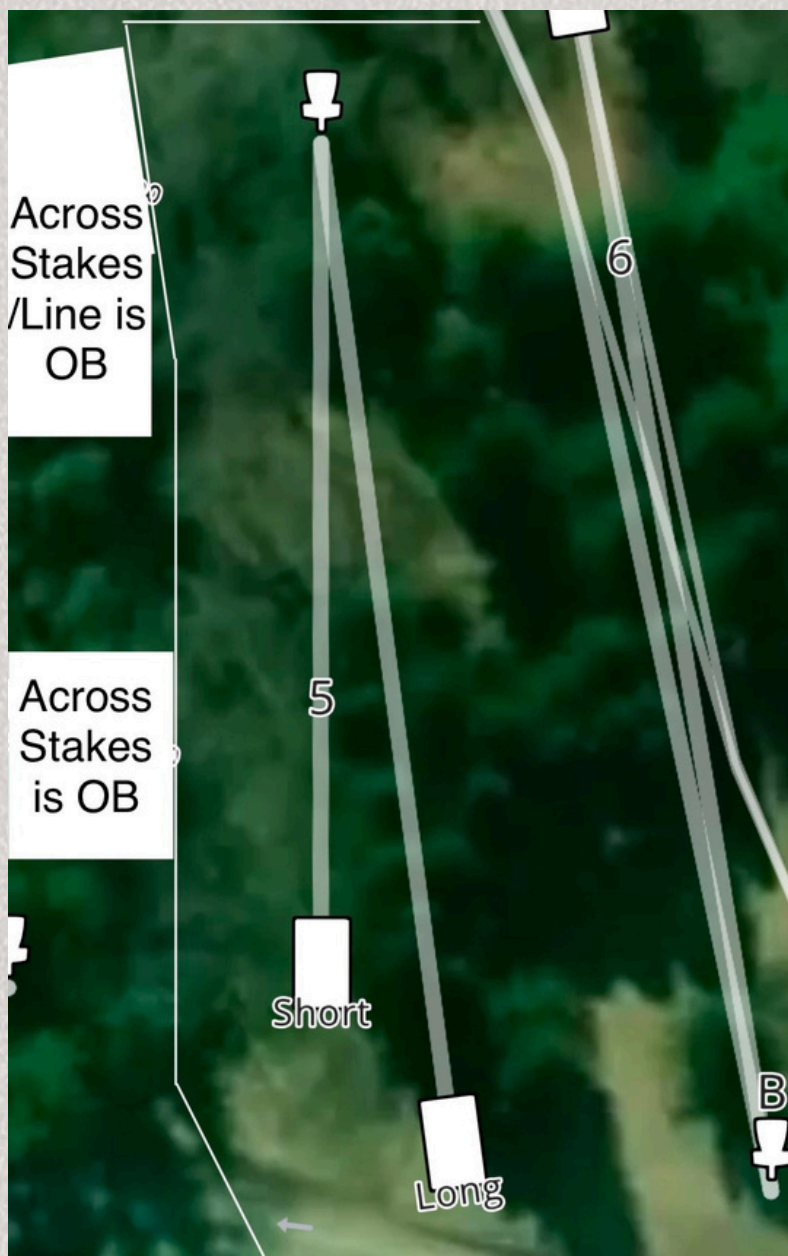
Hole 3: Long - Par 3 - 303 ft.
Short - Par 3 - 206 ft.



Hole 4: Long - Par 3 - 223 ft.
Short - Par 3 - 166 ft.



Hole 5: Long - Par 3 - 273 ft.
Short - Par 3 - 222 ft.



Hole 6: Long - Par 3 - 386 ft.
Short - Par 3 - 265 ft.
(A Pin)



**Hole 7: Long - Par 4 - 432 ft.
Short - Par 4 - 370 ft.
Modified Short - Par 4 - 290 ft.**



Mando Right: if missed proceed to DZ.
POOL D (MJ12 AND MJ15) TEES FROM THE DROP ZONE

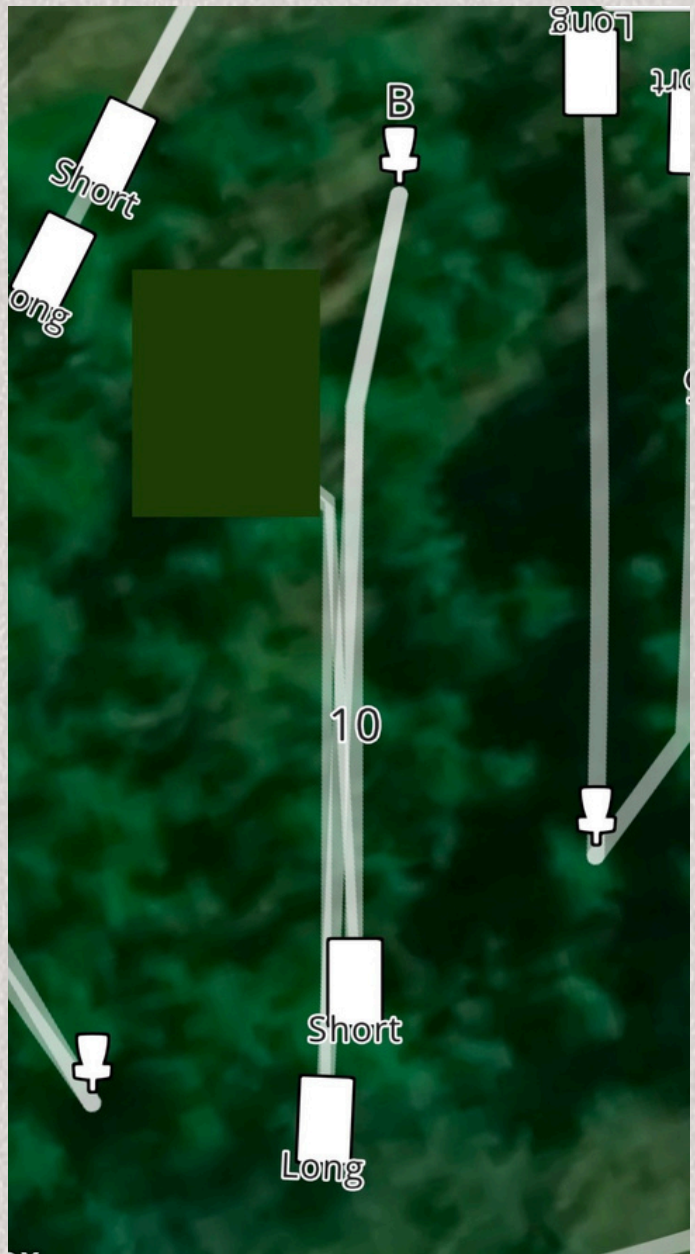
Hole 8: Long - Par 3 - 206 ft.
Short - Par 3 - 191 ft.



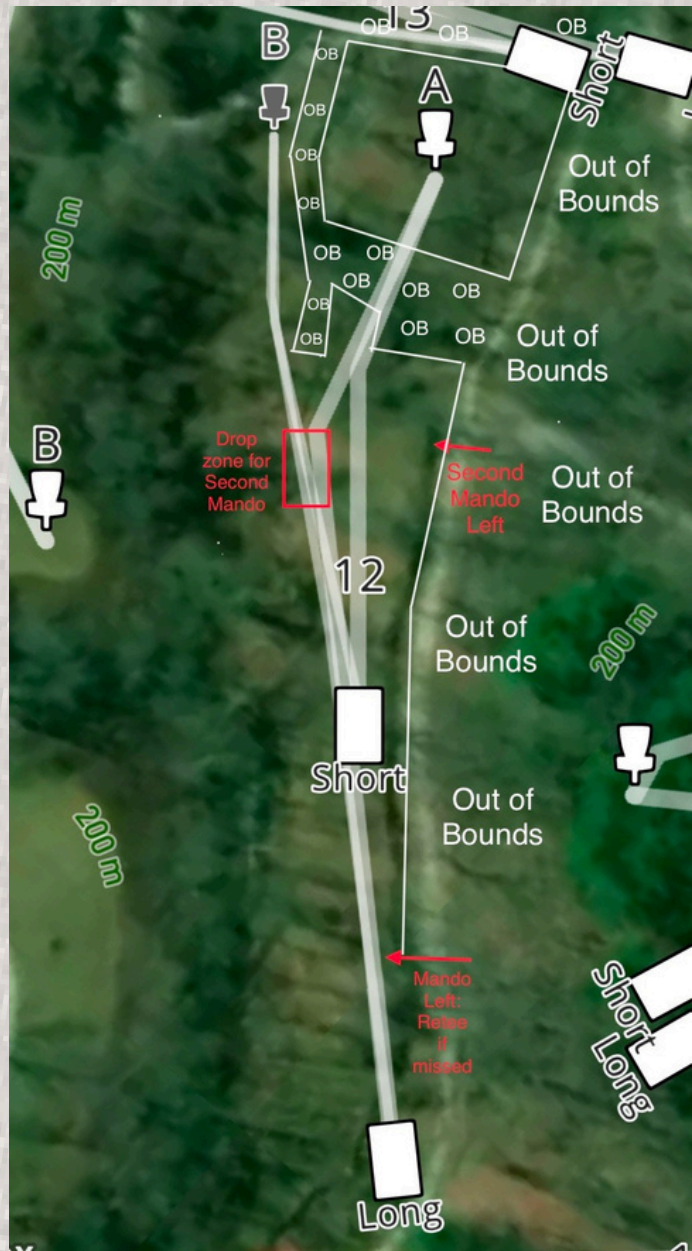
Hole 9: Long - Par 3 - 219 ft.
Short - Par 3 - 209 ft.



Hole 10: Short - Par 3 - 220 ft.



**Hole 12: Short - Par 3 - 286 ft.
Modified Short - Par 3 - 190 ft.**

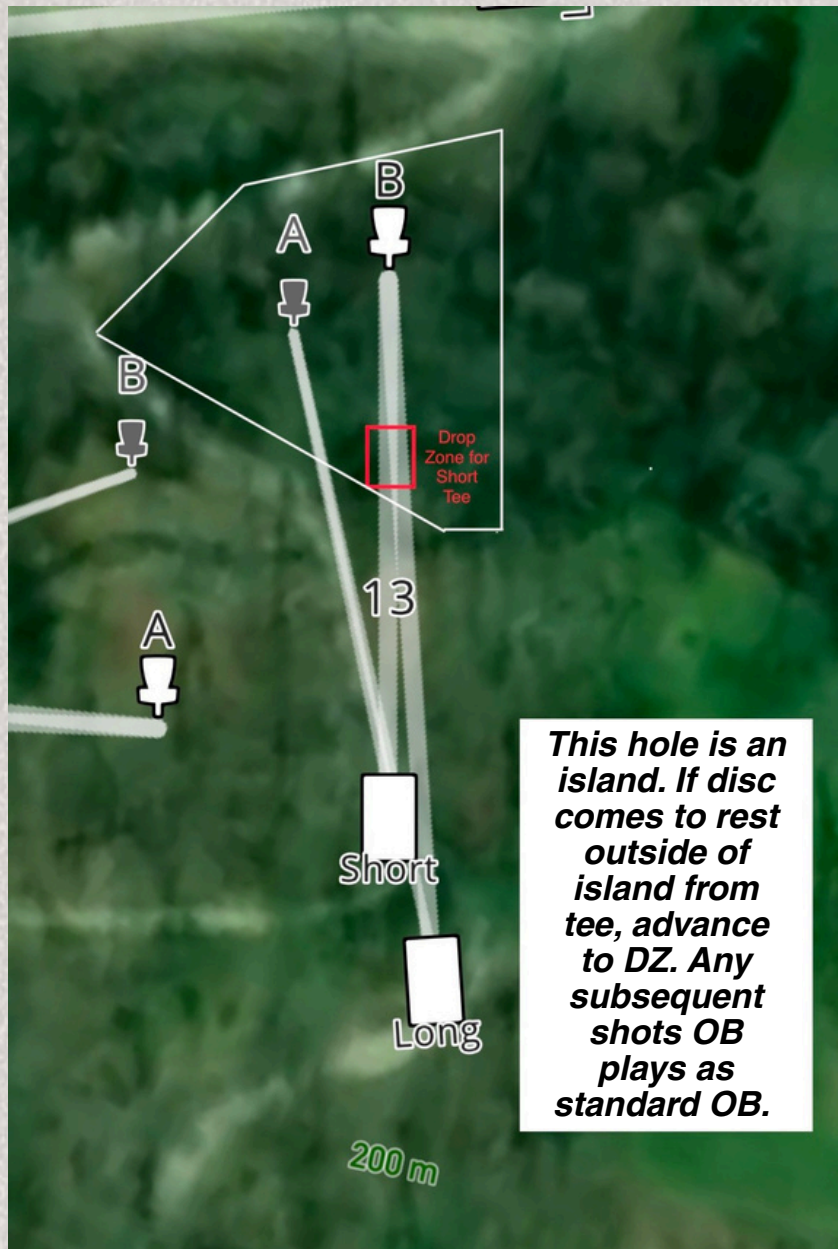


**Out of Bounds is defined
by White Stakes (Small and
Large) beyond right, long
and in creek.**

**Mando Left: If missed
proceed to DZ.**

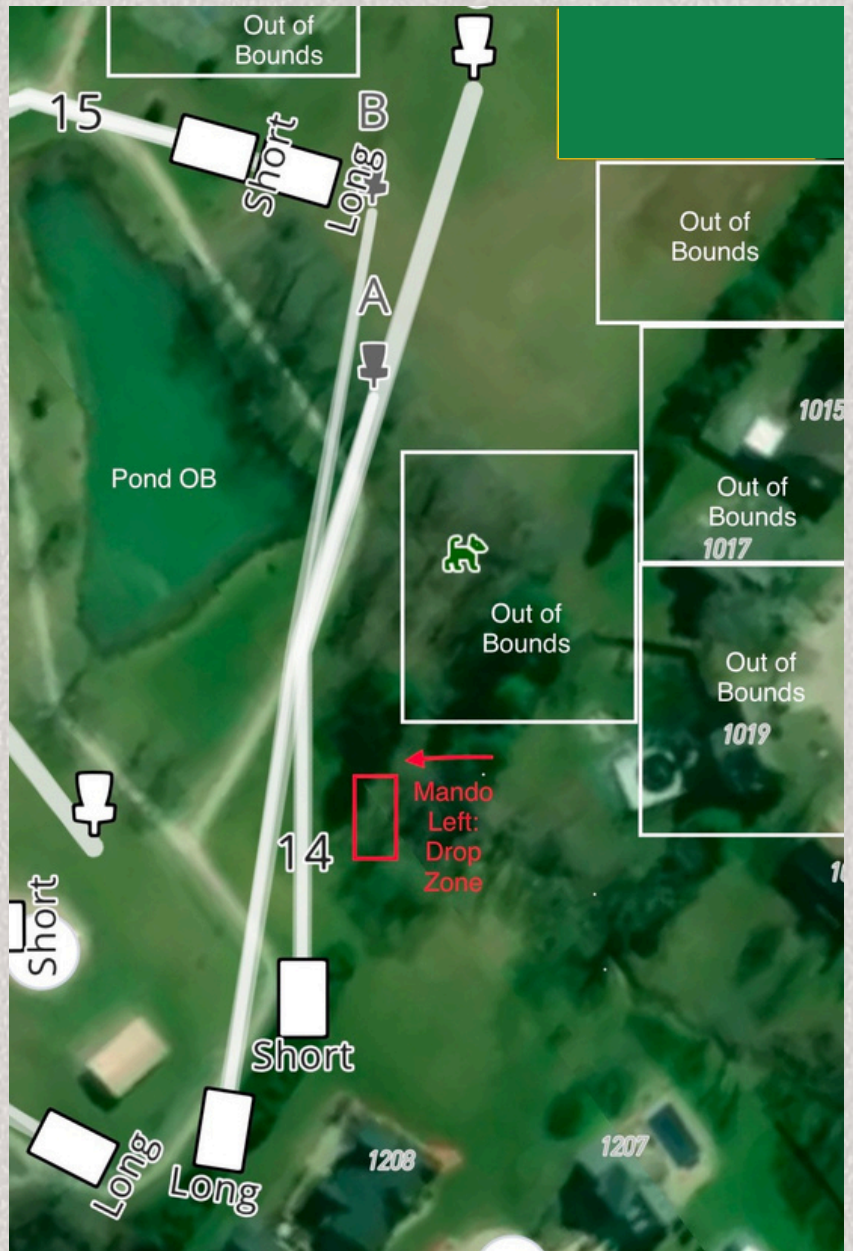
POOL D (MJ12 AND MJ15) TEES FROM THE DROP ZONE

Hole 13: Short - Par 3 - 157 ft.
(A Pin)



This hole is an island. If disc comes to rest outside of island from tee, advance to DZ. Any subsequent shots OB plays as standard OB.

**Hole 14: Short - Par 4 - 501 ft.
Modified Short - Par 4 - 355 ft.**



***Out of Bounds: Pond, inside fences.
Mando Left, if missed proceed to DZ.***

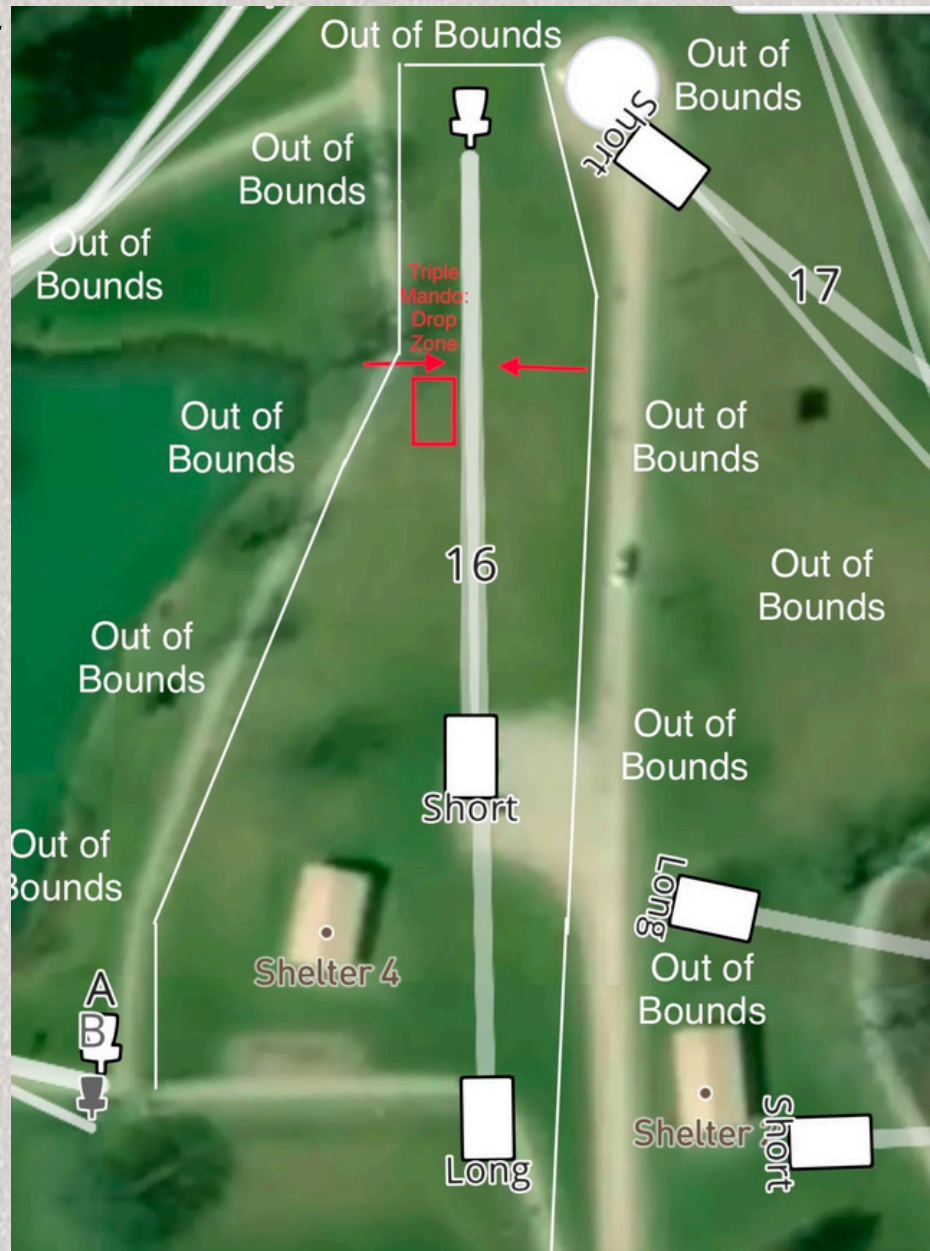
POOL D (MJ12 AND MJ15) TEES FROM THE DROP ZONE

Beyond fence is Out of Bounds

Hole 15: Short - Par 3 - 168 ft.

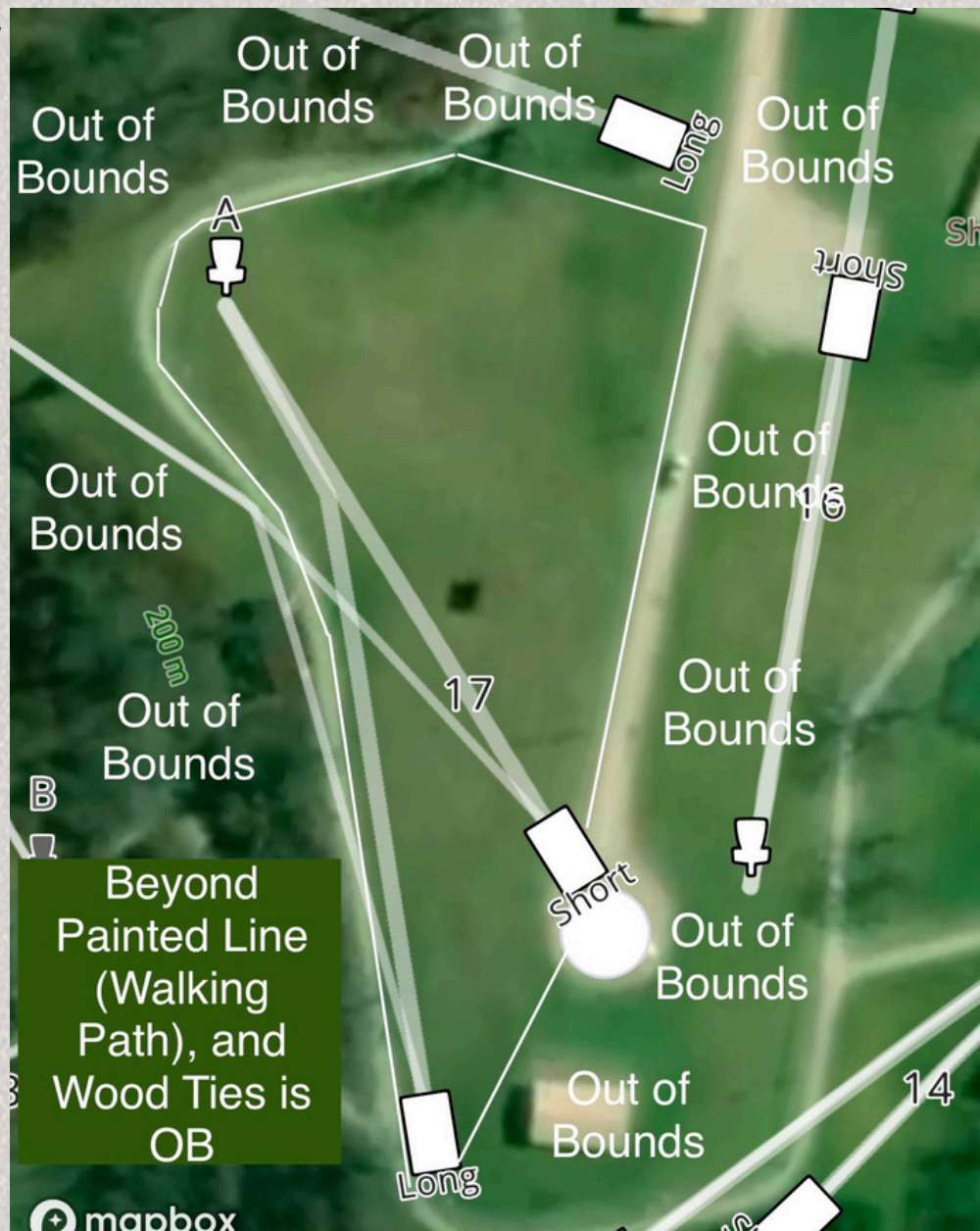


Hole 16: Short - Par 3 - 279 ft.



Out of Bounds:
Beyond painted line left, long and beyond wood frame/painted line on right.
Triple Mando: If missed proceed to DZ.

Hole 17: Short - Par 3 - 322 ft.



**Hole 18: Short - Par 4 - 479 ft.
Modified Short - Par 3 - 200 ft.**



**No Out of Bounds
Mando Left, if missed proceed to DZ.
POOL D (MJ12 AND MJ15) TEES FROM THE DROP ZONE**