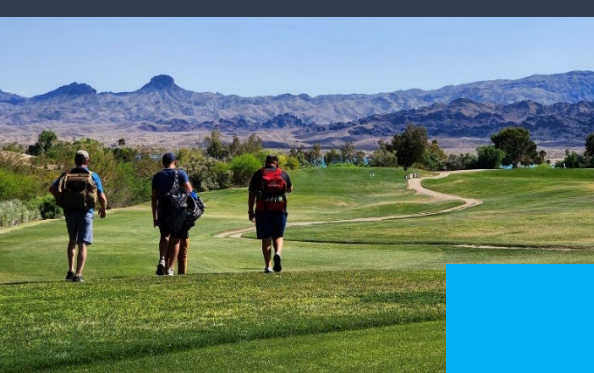


# 9TH ANNUAL LAKE HAVASU CITY OPEN

CADDIE BOOK

SPONSORED BY  
COLOR YOUR GAME



# TOURNAMENT CONTACTS

HAVE A QUESTION, NEED AN *OFFICIAL* ANSWER DURING YOUR ROUND?

**PLEASE TEXT FIRST AND BE SURE TO INCLUDE YOUR NAME**

**IF YOU ARE UNSURE OF A RULING, DECLARE THROWING A PROVISIONAL**



PROVISIONAL INFO

**MERCEDES KAISER: 717-386-6951**  
**TOURNAMENT DIRECTOR**



**GRAHAM RUSSELL: 928-706-3222**  
**ASSISTANT TOURNAMENT DIRECTOR (PLAYING MPO)**

## GENERAL TOURNAMENT QUESTIONS

**JORDAN HICKS (COLOR YOUR GAME)**  
TOURNAMENT OFFICIAL / EVENT SUPPORT (PLAYING MA1)

**CHAD LACEY: 562-882-0620**  
COURSE RULES LIAISON / TOURNAMENT OFFICIAL (PLAYING MA50)

**RACHEL RODRIGUEZ: 928-208-2049**  
TOURNAMENT OFFICIAL / EVENT SUPPORT (PLAYING FA2)

**NIKHOL FORTE**  
DESIGNATED BACK-UP TOURNAMENT OFFICIAL / EVENT SUPPORT

**ATD: GRAHAM AVAILABLE BEFORE/AFTER ROUND**

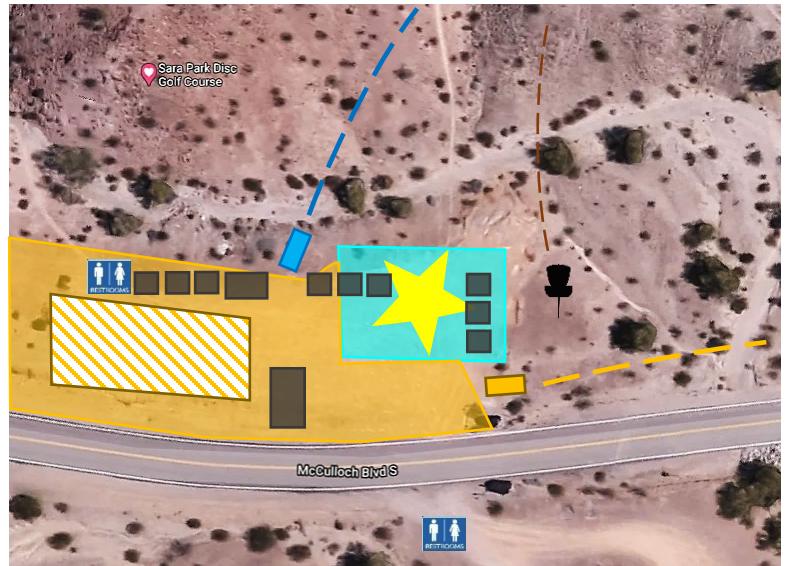
# SARA PARK DISC GOLF COURSE

LAKE HAVASU CITY, ARIZONA



# TOURNAMENT CENTRAL

"MAIN PARKING LOT"



PARKING NO PARKING

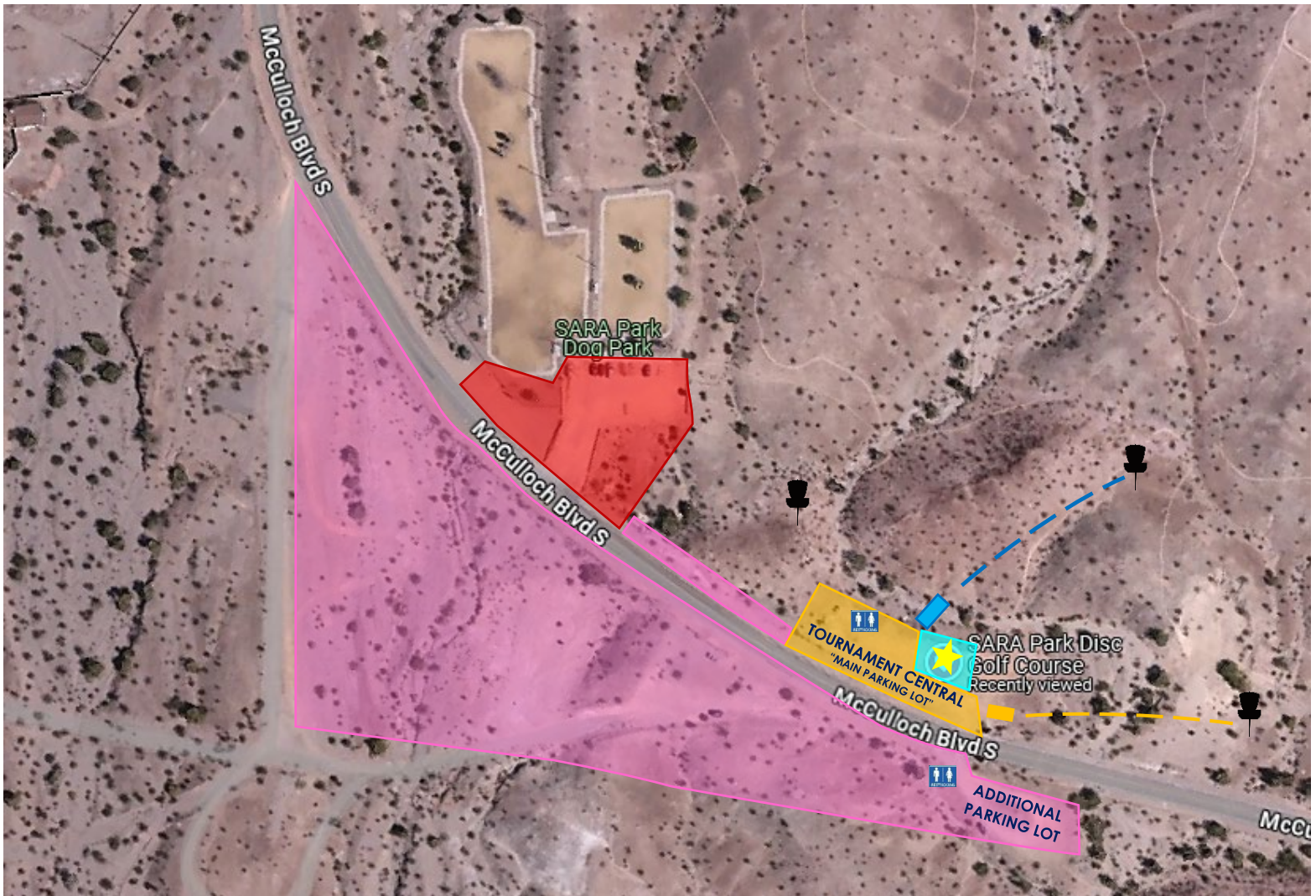
RESERVED PARKING/SETUP SPACE FOR:  
 + VENDORS   
 + TOURNAMENT STAFF

SARA Park Disc Golf Course, McCulloch Blvd S, Lake Havasu City, AZ 86406  
 Google Maps: <https://maps.app.goo.gl/Q4aa551pE44nC3sx7>

PARKING IS FIRST COME FIRST SERVED

## COURSE PARKING

STARTING ON HOLE 10  
 TOURNAMENT HOLE 10  
 FINISHING ON HOLE 9  
 TOURNAMENT HOLE 9  
 MAIN PARKING LOT +  
 ADDITIONAL PARKING LOT



# SARA PARK DISC GOLF COURSE RULES

**EVERYONE WILL START ON HOLE 10 AND FINISH ON HOLE 9.** ALL AM (MINUS MA1)/ALL LADIES/MP70 PLAY **SCORPION** LAYOUT.

ALL PRO/MA1 (MINUS FP'S & MP70) PLAY **SCORPION XL**. JUNIORS PLAY **BABY SCORP** LAYOUT. **NO 2 METER RULE.**

**DAY 1 (ALL DIVISIONS EXCEPT JUNIORS): LONG TEE TO SHORT BASKET IN TREE LINE. JUNIORS PLAY FROM MAIN TEE TO SHORT BASKET. DAY 2 (ALL DIVISIONS): DESIGNATED TEE TO LONG BASKET**

**IF YOU ARE UNSURE OF A RULING ON A SHOT, DECLARE THROWING A PROVISIONAL.**

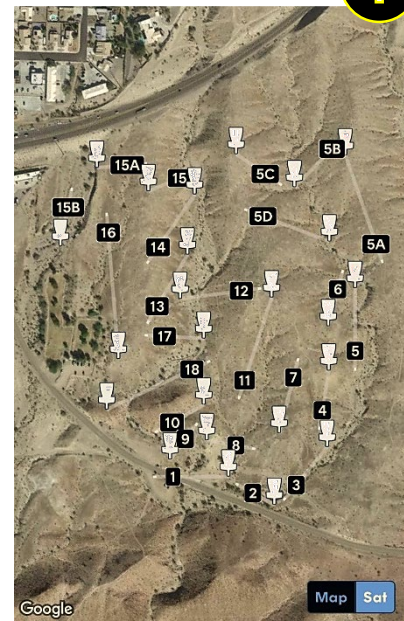
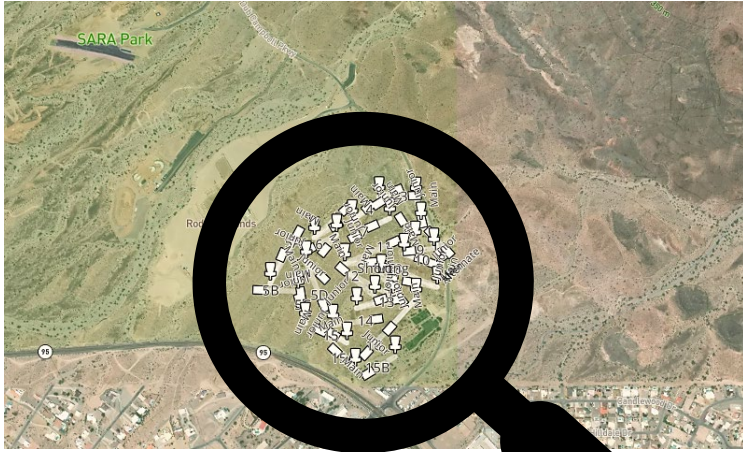
**WHEN PRESENT, STAKES ARE TO BE USED AS A VISUAL QUEUE, TWINE/CABLE DEFINE O.B. CASUAL RELIEF ON HOLE 7.**

TEES	PAR + DISTANCE	LAYOUT		RULES
HOLE 1: JUNIOR:	PAR 3 (346 FT.) PAR 3 (102 FT.)	SCORPION/XL BABY SCORP	DROP ZONE	<b>STUMPS ARE PART OF THE COURSE AND NOT TO BE MOVED.</b> TEEING FROM ORIGINAL HOLE 1 TEE (ON SAME SIDE OF THE ROAD AS TOURNAMENT CENTRAL). <b>(UPDATED OB LINE FOR 2026)</b> FENCE LINE ON RIGHT SIDE OF FAIRWAY IS O.B., MARKED WITH TWINE. ALL O.B. SHOTS OFF THE TEE PROCEED TO DROP ZONE (JUNIOR TEE PAD) WITH PENALTY.
HOLE 2:	PAR 3 (199 FT.)	SCORPION/XL	DOUBLE MANDO + DROP ZONE +HAZARD	DOUBLE MANDO. IF MISSED, PROCEED TO DROP ZONE WITH PENALTY. ROCK LINE/TWINE LEFT OF BASKET PLAYS AS HAZARD, PLAY FROM YOUR LIE WITH PENALTY. <b>(UPDATED OB LINE FOR 2026)</b> FENCE LINE ON RIGHT SIDE OF FAIRWAY IS O.B., MARKED WITH TWINE.
HOLE 3: JUNIOR:	PAR 3 (316 FT.) PAR 3 (148 FT.)	SCORPION/XL BABY SCORP		
HOLE 4: JUNIOR:	PAR 3 (273 FT.) PAR 3 (169 FT.)	SCORPION/XL BABY SCORP		
HOLE 5: SHORT: JUNIOR:	PAR 3 (381 FT.) PAR 3 (297 FT.) PAR 3 (203 FT.)	SCORPION XL SCORPION BABY SCORP		BASKET IS NOT EASILY VISIBLE FROM TEE. AFTER COMPLETING HOLE #5, FOLLOW PATH UP HILL TO THE RIGHT TO HOLES #5A-5D.
HOLE 5A: JUNIOR:	PAR 4 (528 FT.) PAR 4 (261 FT.)	SCORPION/XL BABY SCORP		
HOLE 5B:	PAR 3 (368 FT.) <b>JUNIOR PAR 4</b>	ALL		
HOLE 5C: JUNIOR:	PAR 3 (249 FT.) PAR 3 (185 FT.)	SCORPION/XL BABY SCORP		
HOLE 5D: SHORT: JUNIOR:	PAR 3 (420 FT.) PAR 3 (325 FT.) PAR 3 (184 FT.)	SCORPION XL SCORPION BABY SCORP		
HOLE 6: JUNIOR:	PAR 3 (264 FT.) PAR 3 (150 FT.)	SCORPION/XL BABY SCORP	HAZARD	HAZARD ALONG LEFT SIDE OF FAIRWAY MARKED BY WHITE STAKES AND TWINE. PLAY FROM YOUR LIE WITH PENALTY. TWINE DEFINES HAZARD, STAKES ARE A VISUAL QUEUE.
HOLE 7: JUNIOR:	PAR 3 (355 FT.) PAR 3 (149 FT.)	SCORPION/XL BABY SCORP	DROP ZONE	TEE-SHOT THAT DOES NOT COME TO REST IN-BOUNDS PROCEEDS TO DROP ZONE WITH PENALTY. SUBSEQUENT O.B. SHOTS PLAY FROM LAST IN-BOUNDS WITH PENALTY. TEE TO FIRST ROCK LINE IS SAFE. CABLE AND TWINE CONNECTING TO THE LEFT AND RIGHT SIDE OF FIRST ROCK LINE BACK TOWARDS THE TEE DEFINES O.B. FIRST ROCK LINE TO SECOND ROCK LINE IS O.B. ISLAND IS DEFINED BY CABLE, ROCK LINE IS AN APPROXIMATE BOUNDARY. STAKES ARE A VISUAL QUEUE. CASUAL RELIEF ALLOWED FROM HEART ROCK(S).
HOLE 8: LONG:	PAR 3 (220 FT.) <b>JUNIOR PAR 4</b> PAR 3 (285 FT.)	SCORPION SCORPION XL	DROP ZONE	TEE-SHOT THAT DOES NOT COME TO REST IN-BOUNDS PROCEEDS TO DROP ZONE WITH PENALTY. SUBSEQUENT O.B. SHOTS PLAY FROM LAST IN-BOUNDS WITH PENALTY. O.B. IS DEFINED BY TWINE TO THE RIGHT, LEFT, BEHIND, AND IN FRONT OF PIN POSITION, ROCK LINE IS A VISUAL.

HOLE 9:	PAR 3 (204 FT.)	SCORPION/XL BABY SCORP	ISLAND +DROP ZONE	TEE-SHOT THAT DOES NOT COME TO REST IN-BOUNDS ON ISLAND, PROCEEDS TO DROP ZONE WITH PENALTY. ISLAND IS DEFINED BY TWINE, ROCK LINE IS AN APPROXIMATE BOUNDARY.
HOLE 10:	PAR 3 (255 FT.)	SCORPION	MANDO	MANDO LEFT OF FLAGPOLE. IF MISSED, PROCEED TO DROP ZONE WITH PENALTY. SHOTS LONG AND RIGHT OF BASKET BEYOND ROCK LINE/CABLE ARE O.B. PLAY FROM LAST IN-BOUNDS WITH PENALTY.
LONG:	PAR 3 (315 FT.)	SCORPION XL	+DROP ZONE	
JUNIOR:	PAR 3 (132 FT.)	BABY SCORP		
HOLE 11:	PAR 4 (497 FT.)	SCORPION/XL		
JUNIOR:	PAR 4 (218 FT.)	BABY SCORP		
HOLE 12:	PAR 3 (377 FT.)	ALL	HAZARD	PLAYING TO HOLE 12 ALTERNATE PIN POSITION. BASKET IS ON EDGE OF WASH. HAZARD BEHIND BASKET MARKED BY WHITE STAKES AND TWINE. PLAY FROM YOUR LIE WITH PENALTY. TWINE DEFINES HAZARD, STAKES ARE A VISUAL QUEUE.
	<b>JUNIOR PAR 4</b>			
HOLE 13:	PAR 3 (368 FT.)	SCORPION/XL	HAZARD	BACK SIDE OF GREEN ON THE HILL GOING INTO WASH IS O.B. FROM HILL'S EDGE TO BOTTOM OF HILL, MARKED BY ROCKS AND TWINE. HAZARD ON RIGHT SIDE OF FAIRWAY MARKED BY WHITE STAKES AND TWINE (SEPARATING HOLE 12 AND 13). PLAY FROM YOUR LIE WITH PENALTY. TWINE DEFINES HAZARD, STAKES ARE A VISUAL QUEUE
JUNIOR:	PAR 3 (209 FT.)	BABY SCORP		
HOLE 14:	PAR 3 (322 FT.)	SCORPION		PLAYS TO HANGMAN BASKET. CLIFFSIDE BEHIND BASKET IS O.B. MARKED BY TWINE AND FLAGS.
LONG:	PAR 3 (415 FT.)	SCORPION XL		
	<b>JUNIOR PAR 4</b>			
HOLE 15:	PAR 3 (242 FT.)	SCORPION/XL		
JUNIOR:	PAR 3 (114 FT.)	BABY SCORP		
HOLE 15A:	PAR 3 (227 FT.)	SCORPION		HIGHWAY AND BEYOND IS O.B. LEFT OF BASKET ON CLIFF FACE IS O.B. AFTER COMPLETING HOLE #15A CONTINUE ON PATH BEHIND BASKET, HEADING LEFT IN THE WASH TO HOLE #15B (HEAD STRAIGHT FOR #15B LONG).
LONG:	PAR 3 (324 FT.)	SCORPION XL		
<b>DAY 1 SATURDAY</b>				<b>TWIGS AND BRANCHES AT BASKET ARE PART OF THE COURSE AND NOT TO BE MOVED.</b>
HOLE 15B:	PAR 3 (270 FT.)			AFTER COMPLETING HOLE #15B, WALK UP HILL TO THE LEFT OF BASKET AND LEFT ALONG PATH TO HOLE #16. <b>DAY 1 (ALL DIVISIONS EXCEPT JUNIORS): LONG TEE TO SHORT BASKET IN TREE LINE. JUNIORS PLAY FROM MAIN TEE TO SHORT BASKET.</b>
LONG:	PAR 3 (305 FT.)	SCORPION/XL		
JUNIOR:	PAR 3 (160 FT.)			
<b>DAY 2 SUNDAY</b>				AFTER COMPLETING HOLE #15B, WALK UP HILL TO THE LEFT OF BASKET AND LEFT ALONG PATH TO HOLE #16. <b>DAY 2 (ALL DIVISIONS): DESIGNATED TEE TO LONG BASKET</b>
HOLE 15B:	PAR 3 (270 FT.)	SCORPION		
LONG:	PAR 3 (383 FT.)	SCORPION XL		
JUNIOR:	PAR 3 (160 FT.)			
HOLE 16:	PAR 4 (685 FT.)	SCORPION XL		DOG PARK IS O.B. PLAY FROM LAST IN-BOUNDS WITH PENALTY. BASKET IS LEFT OF DOG PARK ON BACKSIDE OF SMALL HILL. BASKET IS DIFFICULT TO SEE FROM TEE.
SHORT:	PAR 4 (507 FT.)	SCORPION		
JUNIOR:	PAR 4 (347 FT.)	BABY SCORP		
HOLE 17:	PAR 3 (270 FT.)	SCORPION	TRIPLE MANDO	TRIPLE MANDO. SHOT MUST GO THROUGH STRUCTURE. IF MISSED, PROCEED TO DROP ZONE WITH PENALTY. JUNIOR TEE AT THE DROP ZONE.
LONG:	PAR 3 (311 FT.)	SCORPION XL	+DROP ZONE	
JUNIOR:	PAR 3 (205 FT.)	BABY SCORP		
HOLE 18:	PAR 4 (531 FT.)	SCORPION		DISC GOLF COURSE PARKING LOT AND DOG PARK PARKING LOT IS O.B. (BUT RARELY COME INTO PLAY). PLAY FROM LAST IN-BOUNDS WITH PENALTY.
LONG:	PAR 4 (635 FT.)	SCORPION XL		
JUNIOR:	PAR 4 (243 FT.)	BABY SCORP		



# SARA PARK DISC GOLF COURSE LAKE HAVASU CITY, ARIZONA



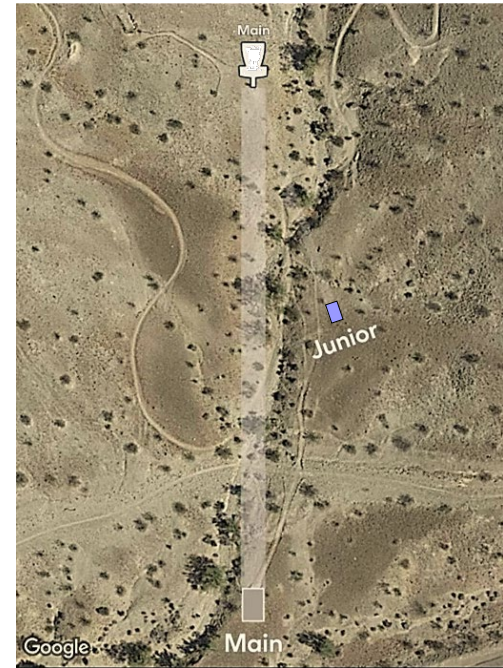
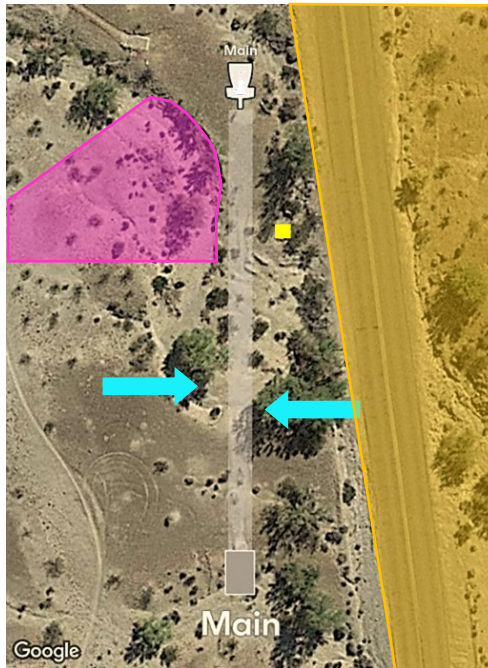
- 4** HOLES WITH A HAZARD (2+6+12+13)
- 3** HOLES WITH A MANDO (2+10+17)
- 7** HOLES WITH A DROP ZONE (1+2+7+8+9+10+17)
- 4** HOLES WITH A SHORT TEE (5+5D+14+16)
- 6** HOLES WITH A LONG TEE (8+10+15B+17+18)
- 17** HOLES WITH A JUNIOR TEE

SARA Park Disc Golf Course, McCulloch Blvd S, Lake Havasu City, AZ 86406  
 Google Maps: <https://maps.app.goo.gl/Q4aa551pE44nC3sx7>

- O.B.      → NEXT TEE
- HAZARD      ♥ CASUAL RELIEF ALLOWED FROM HEART ROCK(S) (HOLE 7)  
BE A PART OF OUR GROWING HEART & LEAVE A HEART SHAPED ROCK

## COURSE LAYOUT AND RULES

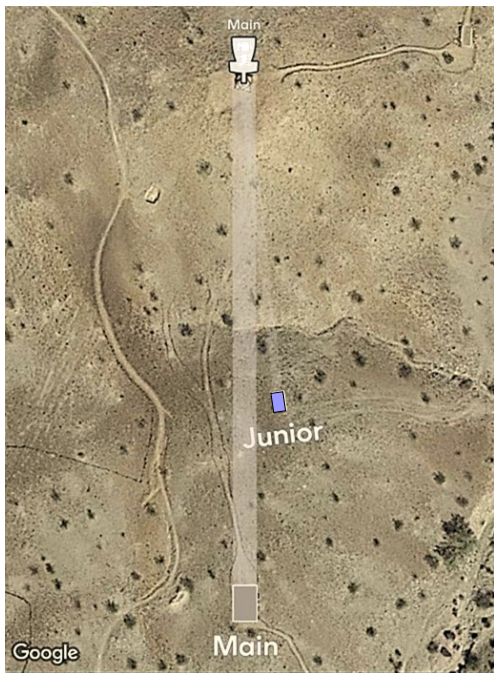
EVERYONE WILL START ON HOLE 10 AND FINISH ON HOLE 9. ALL AM (MINUS MA1)/ALL LADIES/MP70 PLAY SCORPION LAYOUT. ALL PRO (MINUS FP'S & MP70)/MA1 PLAY SCORPION XL. JUNIORS PLAY BABY SCORP LAYOUT. NO 2 METER RULE. DAY 1 (ALL DIVISIONS EXCEPT JUNIORS): LONG TEE TO SHORT BASKET IN TREE LINE. JUNIORS PLAY FROM MAIN TEE TO SHORT BASKET. DAY 2 (ALL DIVISIONS): DESIGNATED TEE TO LONG BASKET. IF YOU ARE UNSURE OF A RULING ON A SHOT, DECLARE THROWING A PROVISIONAL. WHEN PRESENT, STAKES ARE TO BE USED AS A VISUAL QUEUE, TWINE/CABLE DEFINE O.B. CASUAL RELIEF ON HOLE 7.



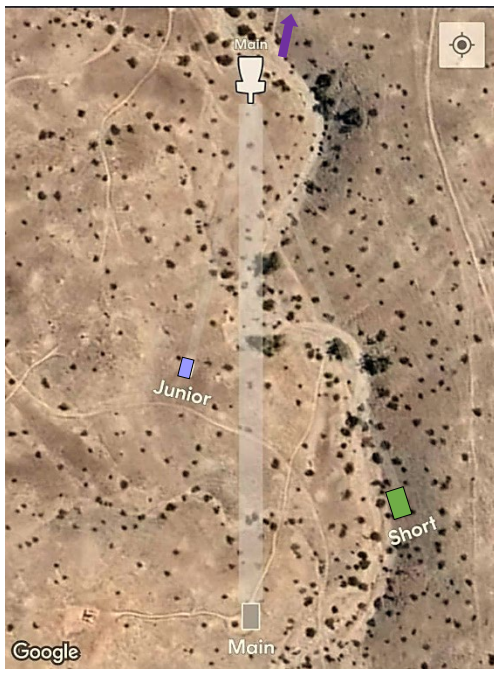
**HOLE 1: PAR 3 (346 FT.)**  
**JUNIOR TEE: PAR 3 (102 FT.)**  
 Teeing from original Hole 1 (on same side of road as TC). (Updated OB 2026) Fence line on right side of fairway is O.B. All O.B. shots off the tee proceed to **Drop Zone** (junior tee pad) with penalty.

**HOLE 2: PAR 3 (199 FT.)**  
**Double Mando.** If missed, proceed to **Drop Zone** with penalty. **Rock line/twine left of basket** plays as **Hazard**, play from your lie with penalty. (Updated OB 2026) Fence line on right side of fairway is O.B.

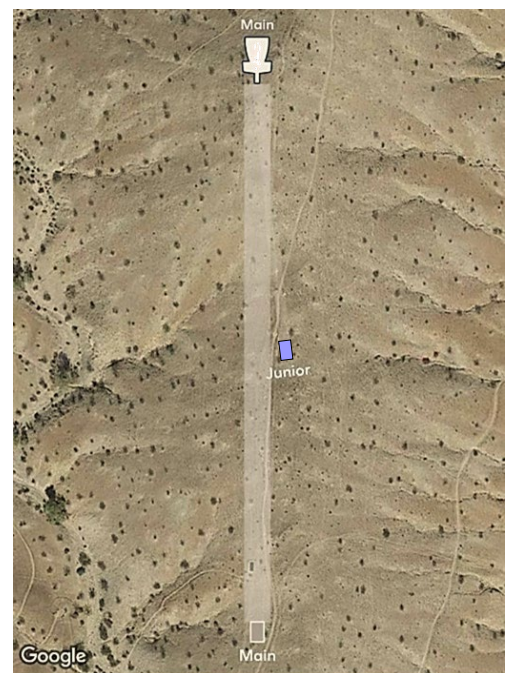
**HOLE 3: PAR 3 (316 FT.)**  
**JUNIOR TEE: PAR 3 (148 FT.)**



**HOLE 4: PAR 3 (273 FT.)  
JUNIOR TEE: PAR 3 (169 FT.)**



**HOLE 5: PAR 3 (381 FT.)  
SHORT TEE: PAR 3 (297 FT.)  
JUNIOR TEE: PAR 3 (203 FT.)**  
Basket is not easily visible from tee.  
After completing Hole #5, follow path  
up hill to the right to holes #5A-5D.



**HOLE 5A: PAR 4 (528 FT.)  
JUNIOR TEE: PAR 4 (261 FT.)**



**HOLE 5B: PAR 3 (368 FT.)  
(JUNIOR PAR 4)**



**HOLE 5C: PAR 3 (249 FT.)  
JUNIOR TEE: PAR 3 (185 FT.)**

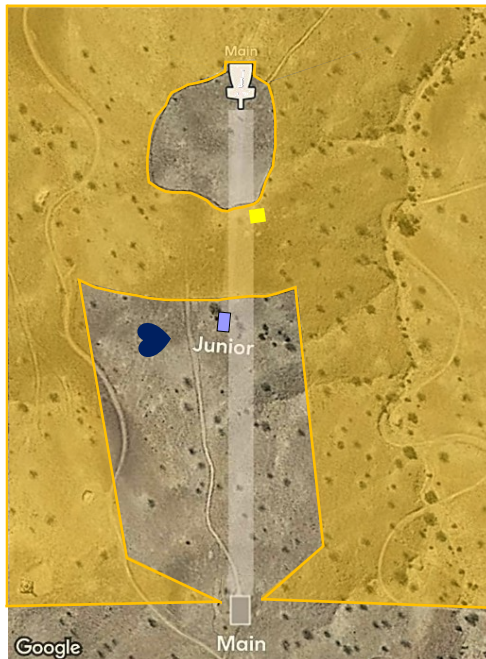


**HOLE 5D: PAR 3 (420 FT.)  
SHORT TEE: PAR 3 (325 FT.)  
JUNIOR TEE: PAR 3 (184 FT.)**



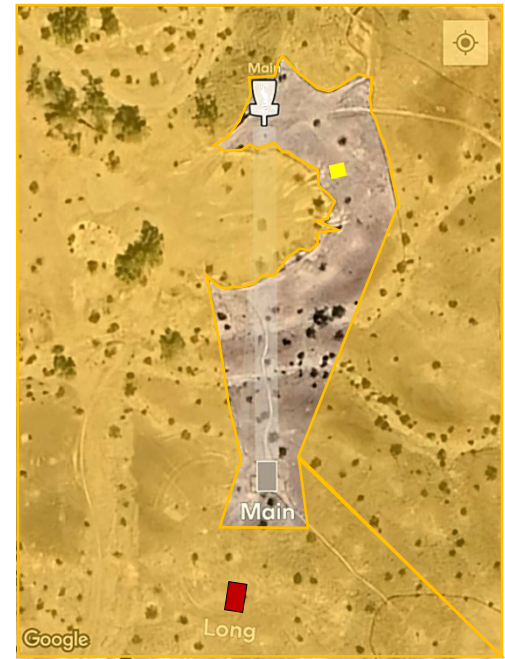
**HOLE 6: PAR 3 (264 FT.)**  
**JUNIOR TEE: PAR 3 (150 FT.)**

Hazard along left side of fairway marked by white stakes and twine. Play from your lie with penalty. Twine defines Hazard, stakes are a visual queue.



**HOLE 7: PAR 3 (355 FT.)**  
**JUNIOR TEE: PAR 3 (149 FT.)**

Tee-shot that does not come to rest in-bounds proceeds to Drop Zone with penalty. Subsequent O.B. shots play from last in-bounds with penalty. Tee to first rock line is safe. Cable and twine connecting to the left and right side of first rock line back towards the tee defines O.B. First rock line to second rock line is O.B. Island is defined by cable, rock line is an approximate boundary. Stakes are a visual queue. Casual Relief allowed from Heart Rock(s).



**HOLE 8: PAR 3 (220 FT.)**  
**(JUNIOR PAR 4)**  
**LONG TEE: PAR 3 (285 FT.)**

Tee-shot that does not come to rest in-bounds proceeds to Drop Zone with penalty. Subsequent O.B. shots play from last in-bounds with penalty. O.B. is defined by twine to the right, left, behind, and in front of pin position, rock line is a visual.



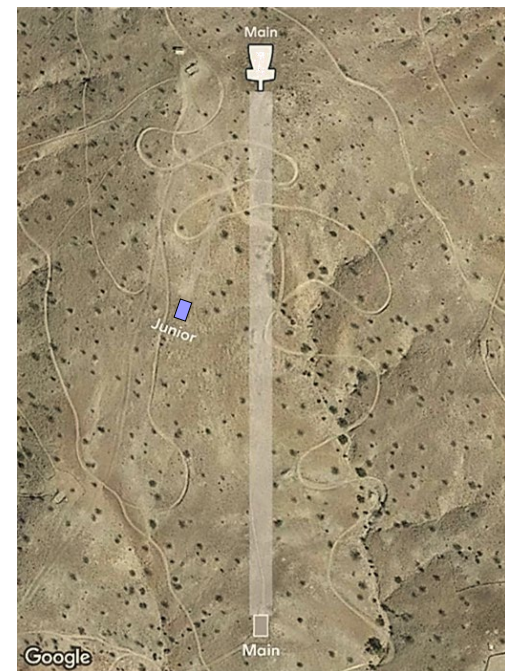
**HOLE 9: PAR 3 (204 FT.)**

Tee-shot that does not come to rest in-bounds on island, proceeds to Drop Zone with penalty. Island is defined by twine, rock line is an approximate boundary.



**HOLE 10: PAR 3 (255 FT.)**  
**LONG TEE: PAR 3 (315 FT.)**  
**JUNIOR TEE: PAR 3 (132 FT.)**

Mando left of flagpole. If missed, proceed to Drop Zone with penalty. Shots long and right of basket beyond rock line/cable are O.B. Play from last in-bounds with penalty.

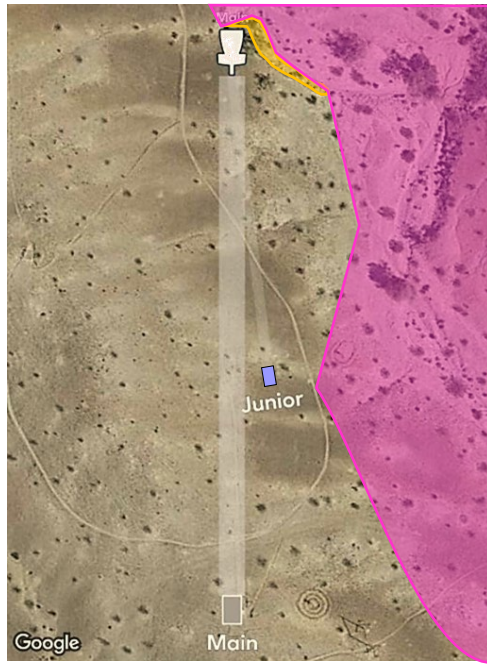


**HOLE 11: PAR 4 (497 FT.)**  
**JUNIOR TEE: PAR 4 (218 FT.)**



**HOLE 12: PAR 3 (377 FT.)  
(JUNIOR PAR 4)**

Playing to Hole 12 alternate pin position. Basket is on edge of wash. Hazard behind basket marked by white stakes and twine. Play from your lie with penalty. Twine defines Hazard, Stakes are a visual queue.



**HOLE 13: PAR 3 (368 FT.)  
JUNIOR TEE: PAR 3 (209 FT.)**

Back side of green on the hill going into wash is O.B. from hill's edge to bottom of hill, marked by rocks and twine. Hazard on right side of fairway marked by white stakes and twine (Separating Hole 12 & 13). Play from your lie with penalty. Twine defines Hazard, stakes are a visual queue.

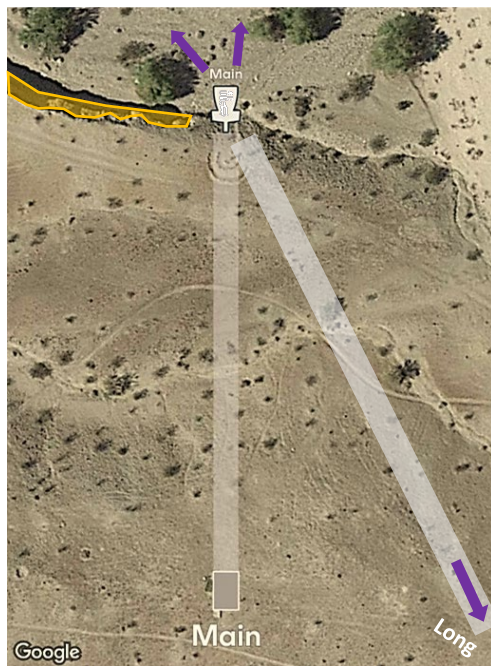


**HOLE 14: PAR 3 (415 FT.)  
SHORT TEE: PAR (322 FT.)  
(JUNIOR PAR 4)**

Plays to Hangman basket. Cliffside behind basket is O.B. marked by twine and flags.



**HOLE 15: PAR 3 (242 FT.)  
JUNIOR TEE: PAR 3 (114 FT.)**



**HOLE 15A: PAR 3 (227 FT.)  
LONG TEE: PAR 3 (324 FT.)**

Highway and beyond is O.B. Left of basket on cliff face is O.B. After completing Hole #15A continue on path behind basket, heading left in the wash to Hole #15B (head straight for #15B Long).



**HOLE 15B: PAR 3 (270 FT.)  
LONG TEE: PAR 3 (383 FT.) (305 SH)  
JUNIOR TEE: PAR 3 (160 FT.)**

DAY 1 (All Divisions Except Juniors): Long Tee to Short Basket in tree line. Juniors play from Main tee to Short Basket.

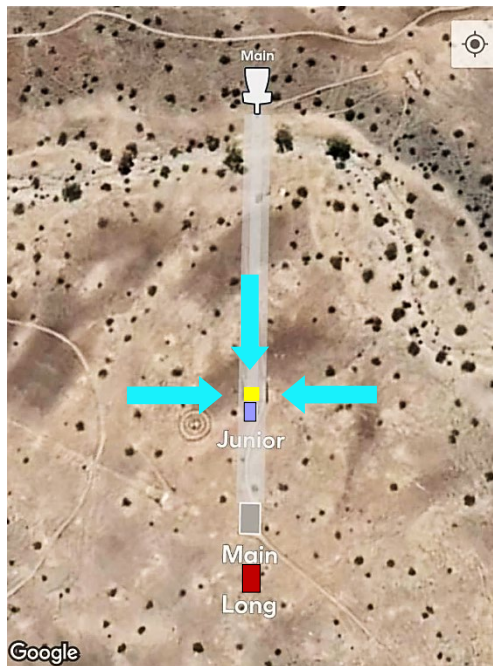
DAY 2 (All Divisions): Designated Tee to Long Basket.

After completing Hole #15B, walk up hill to the left of basket and left along path to Hole #16.



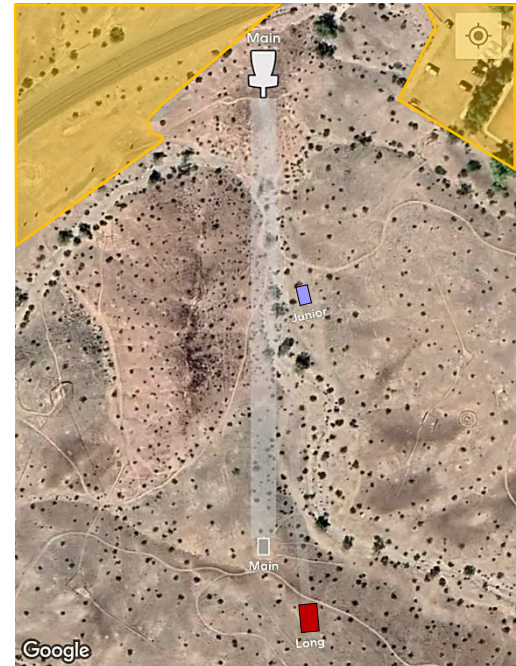
**HOLE 16: PAR 4 (685 FT.)**  
**SHORT TEE: PAR 4 (507 FT.)**  
**JUNIOR TEE: PAR 4 (347 FT.)**

Dog Park is O.B. Play from last in-bounds with penalty. Basket is left of Dog Park on backside of small hill. Basket is difficult to see from tee.



**HOLE 17: PAR 3 (270 FT.)**  
**LONG TEE: PAR 3 (311 FT.)**  
**JUNIOR TEE: PAR 3 (205 FT.)**

**Triple Mando.** Shot must go through structure. If missed, proceed to **Drop Zone** with penalty. Junior Tee at Drop Zone.



**HOLE 18: PAR 4 (531 FT.)**  
**LONG TEE: PAR 4 (635 FT.)**  
**JUNIOR TEE: PAR 4 (243 FT.)**

Disc Golf Course parking lot and Dog Park parking lot is O.B. (But rarely come into play). Play from last in-bounds with penalty.

**PDGA**



PDGA DIGITAL SCORECARD: [PDGA.COM/SCORE](https://pdga.com/score)

ACCESS CODE: LHC026

MAPPED ON

**UDisc**



# RAFFLE TICKET INFO

TICKETS WILL BE SOLD BY COLOR SO PLAYERS AND NON-PLAYERS CAN EASILY IDENTIFY WINNING ITEMS.

RAFFLE TICKETS CAN BE PURCHASED AT SARA PARK ON FRIDAY, SATURDAY, AND ON SUNDAY (UNTIL 9:30 AM)

WITH CASH, VENMO @MERCEDES-KAISER (717-386-6951) OR PAYPAL:

LAKEHAVASUCITYDISCGOLF@GMAIL.COM (GRAHAM RUSSELL). TICKETS WILL BE 1 FOR \$5 OR 6 FOR \$20.

RAFFLE DRAWING WILL BE SUNDAY @ ROUGHLY 11:00AM AT TOURNAMENT CENTRAL AT SARA PARK DISC GOLF COURSE. WINNING TICKETS WILL BE TAPED TO THEIR ITEM AND CAN BE FOUND AT TOURNAMENT CENTRAL. ALL ITEMS MUST BE PICKED UP FROM SARA PARK ON SUNDAY BY 4:30PM. IF YOU ARE LEAVING TOWN EARLY, PLEASE LEAVE YOUR TICKETS WITH SOMEONE WHO CAN CHECK FOR & PICK UP YOUR ITEMS, TICKET MUST BE PRESENTED FOR VERIFICATION. ALL UNCLAIMED ITEMS WILL BE FORFEITED BACK TO THE LHCDGC AND USED TOWARDS FUTURE EVENTS.



**PRO PLAYERS**



**AM PLAYERS**



**NON-PLAYERS**

ANYONE NOT PLAYING THE TOURNAMENT

**SPECTATORS**

**FOLLOW LIVE SCORING**

**PDGA.COM/LIVE/EVENTS**

**SEARCH: 9TH ANNUAL LAKE HAVASU CITY OPEN**



**PSSSST! SCAN ME**

**OR DOWNLOAD THE PDGA LIVE APP**



# **PDGA DIGITAL SCORECARD FOR PLAYERS ONLY**

---

**PDGA.COM/SCORE  
ACCESS CODE: LHCO26**



# **PSSSST! SCAN ME**

**OR DOWNLOAD THE PDGA LIVE APP**

