



RUNDLE PARK
EDMONTON ALBERTA
FEBRUARY 22 2026

TUNDRA



TOSS



5

**Brock
Ciochetti**
president@edga.ca

TOURNAMENT TEAM

**Darryl
Williams**
vp@edga.ca

**Matt
Dwyer**
programming@edga.ca



LAND ACKNOWLEDGEMENT

We acknowledge Treaty 6 territory—the traditional and ancestral territory of the Cree, Dene, Blackfoot, Saulteaux and Nakota Sioux. We acknowledge that this territory is home to the Métis Settlements and the Métis Nation of Alberta, Regions 2, 3 and 4 within the historical Northwest Métis Homeland.



EDGA WELCOME DAY

Come get your 2026 EDGA bag tag, visit with members of the board and buy some merch from us or Wildman Disc Golf!

Place an order on [WildmanDiscGolf.com](https://www.wildmandiscgolf.com) by Feb 21st and you can pick it up at the Trail House.



BIRDIE BOUNTIES

Round 1

Hole 4
Hole 10
Hole 16

Round 2

Hole 3
Hole 12
Hole 14

GET A BIRDIE ON THESE HOLES AND
GO INTO THE PRIZE DRAW



Please respect the tournament staff, other players, and course by avoiding drinking alcohol, smoking, vaping, littering, yelling, or excessively swearing during the tournament. Non-compliance could result in penalty strokes or disqualification.



LOST DISCS

Please make sure that everyone on the card is spotting for everyone else. This will increase the pace of play.

Please adhere to the lost disc rule (802.06) when applicable.



PDGA STUFF

The Tundra Toss 5 is a PDGA sanctioned C-Tier event, which will adhere to all the tournament rules that can be found at

<https://www.pdga.com/rules/official-rules-disc-golf>

All players must keep score.

[Link to Emergency Plan](#)

Access Code: TT26

No two metre rule

<https://www.pdga.com/tour/event/98918>

SCHEDULE

8:00 am - 9:00 am - Check in at Tournament Central.

9:00 am - 9:15 am - Players meeting at Tournament Central.

9:30 am - 12:30 pm - Round 1.

12:30 pm - 1:15 pm - Lunch.

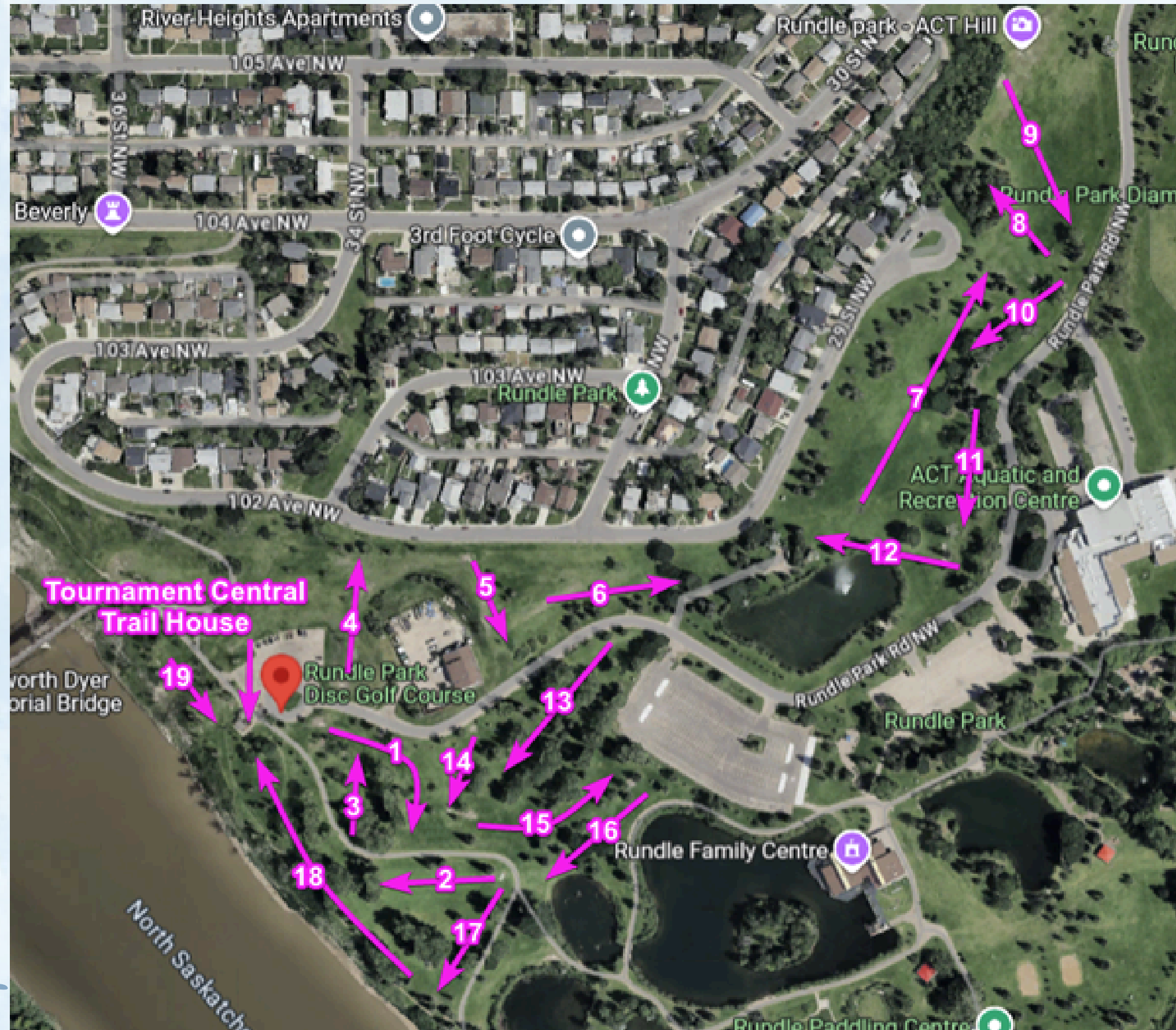
1:30 pm - 4:30 pm - Round 2.

4:30 pm - 5:30 pm - Awards and draws.

Public Washrooms are available at the ACT Centre and Rundle Family Centre, but may not be open until 9 or 10 am, so please plan accordingly.

These are also great places to warm up during the break as space in the Trail House at lunch will be limited. The ACT Centre has a small restaurant as well.

SITE MAP



Washrooms are available at Rundle Family Centre and ACT Centre after 9 AM

OB AND MANDATORIES

The only OB/mandatories in play for all divisions are the maintenance yard on hole 4/5 and the gully on hole 19.

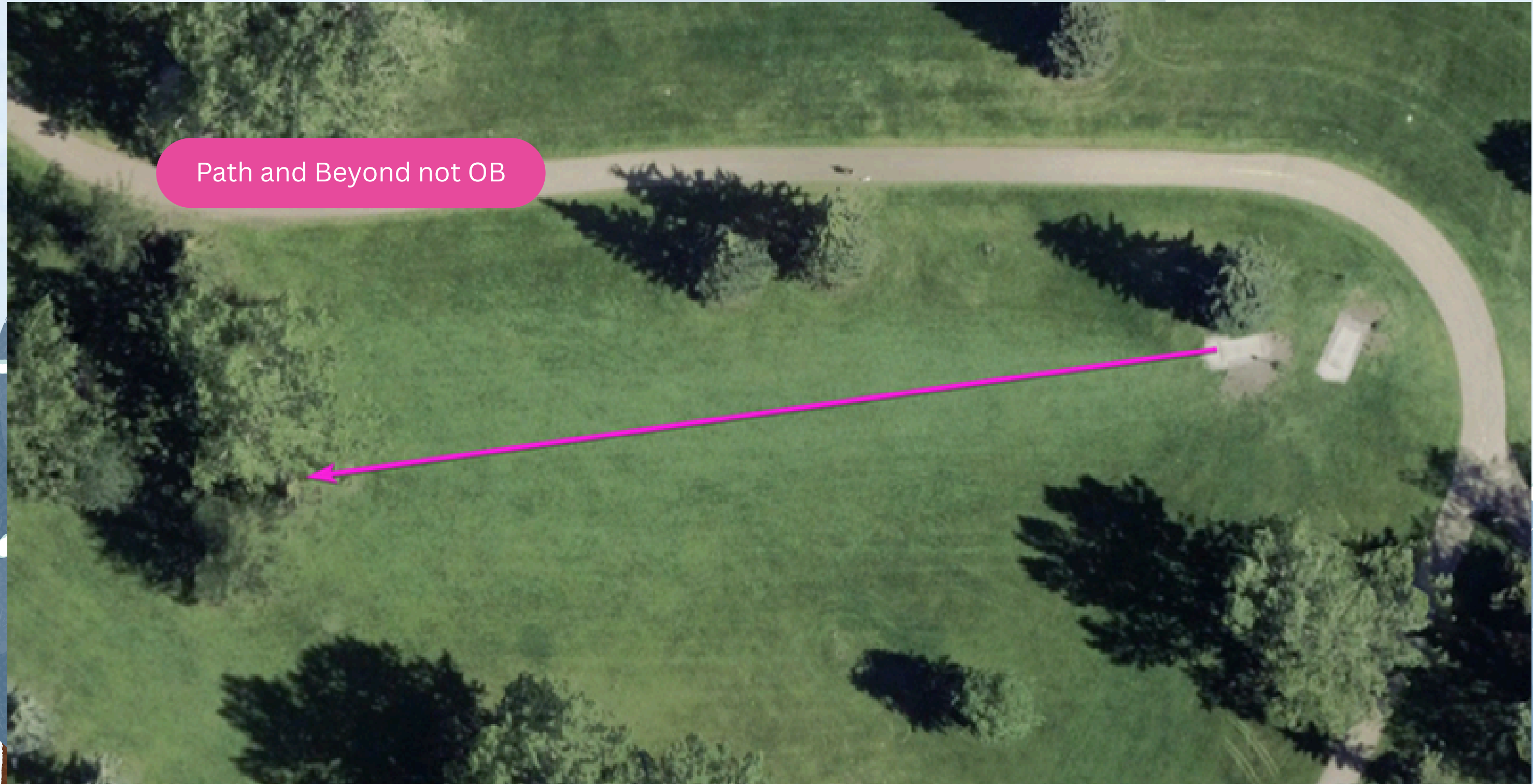
MPO, MP40, MP50, MA1, MA40
Walking paths are not OB. Roads are OB. All OB will be played as point of entry. There are no drop zones for OB.

MPO, MP40, MP50, MA1, MA40
The mandatory routes on hole 1 and 15 have designated drop zones if you cross on the wrong side.

HOLE 1 PAR 3 298FT

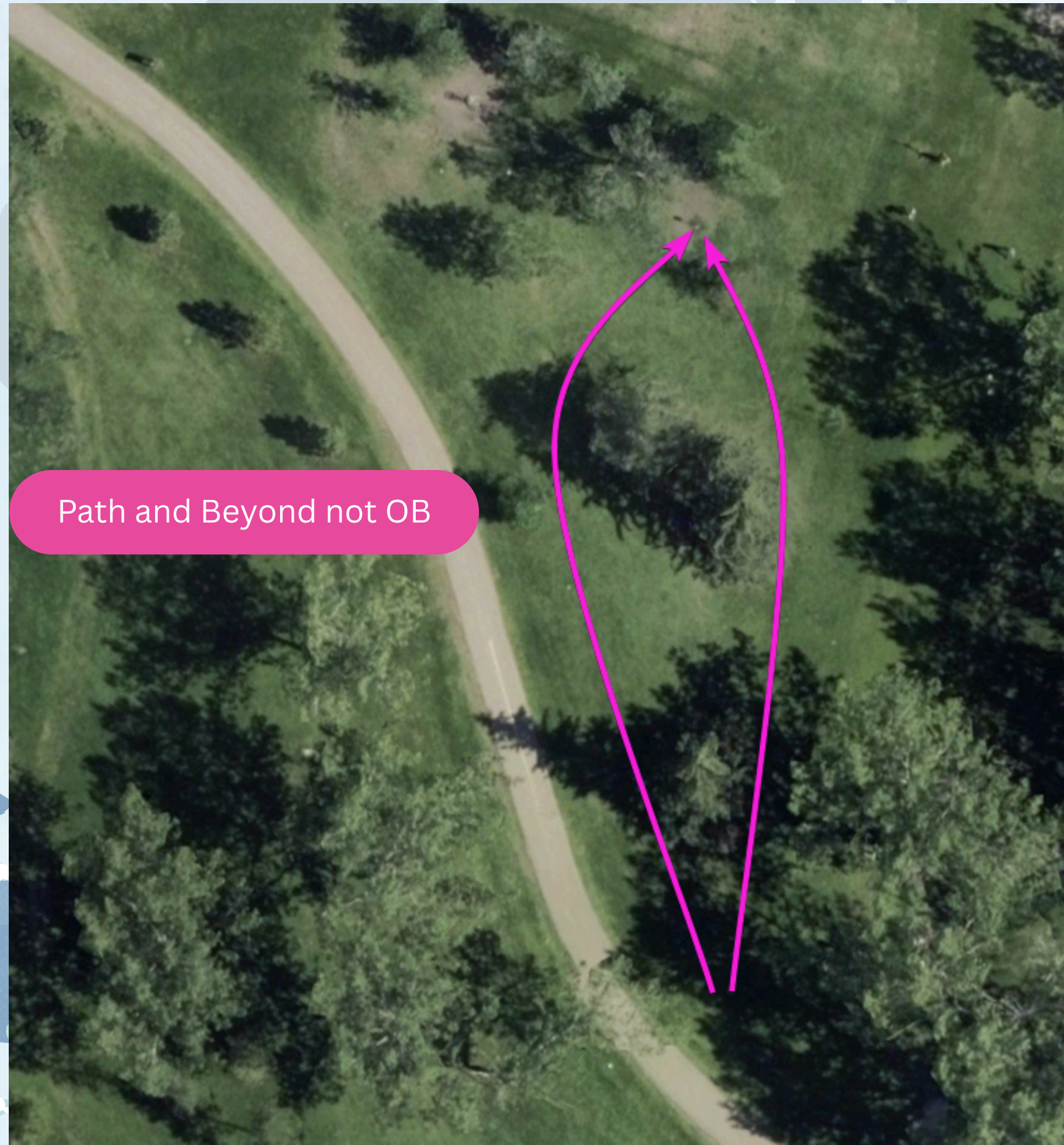


HOLE 2 PAR 3 210FT



Path and Beyond not OB

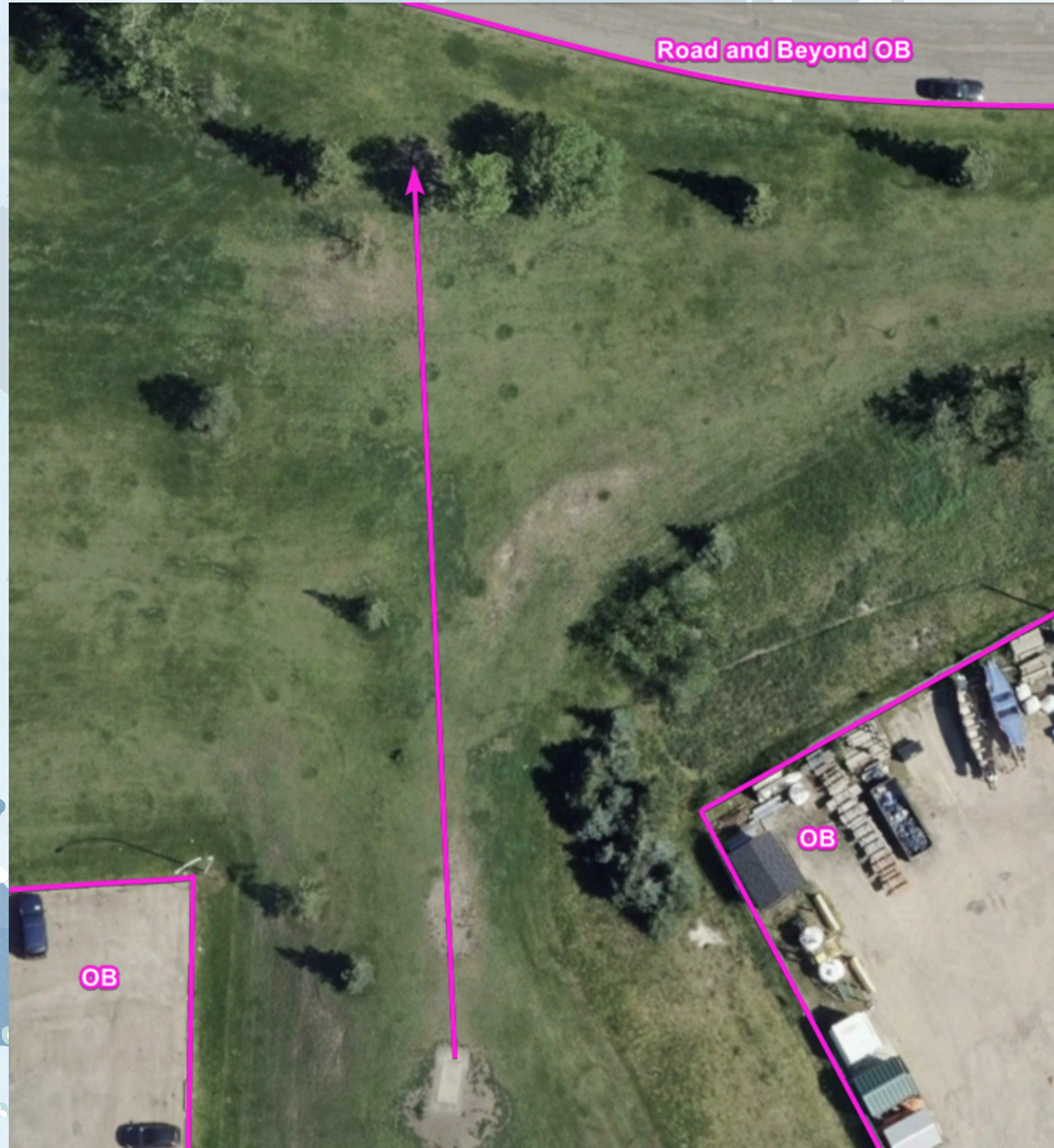
HOLE 3 PAR 3 190FT



Path and Beyond not OB



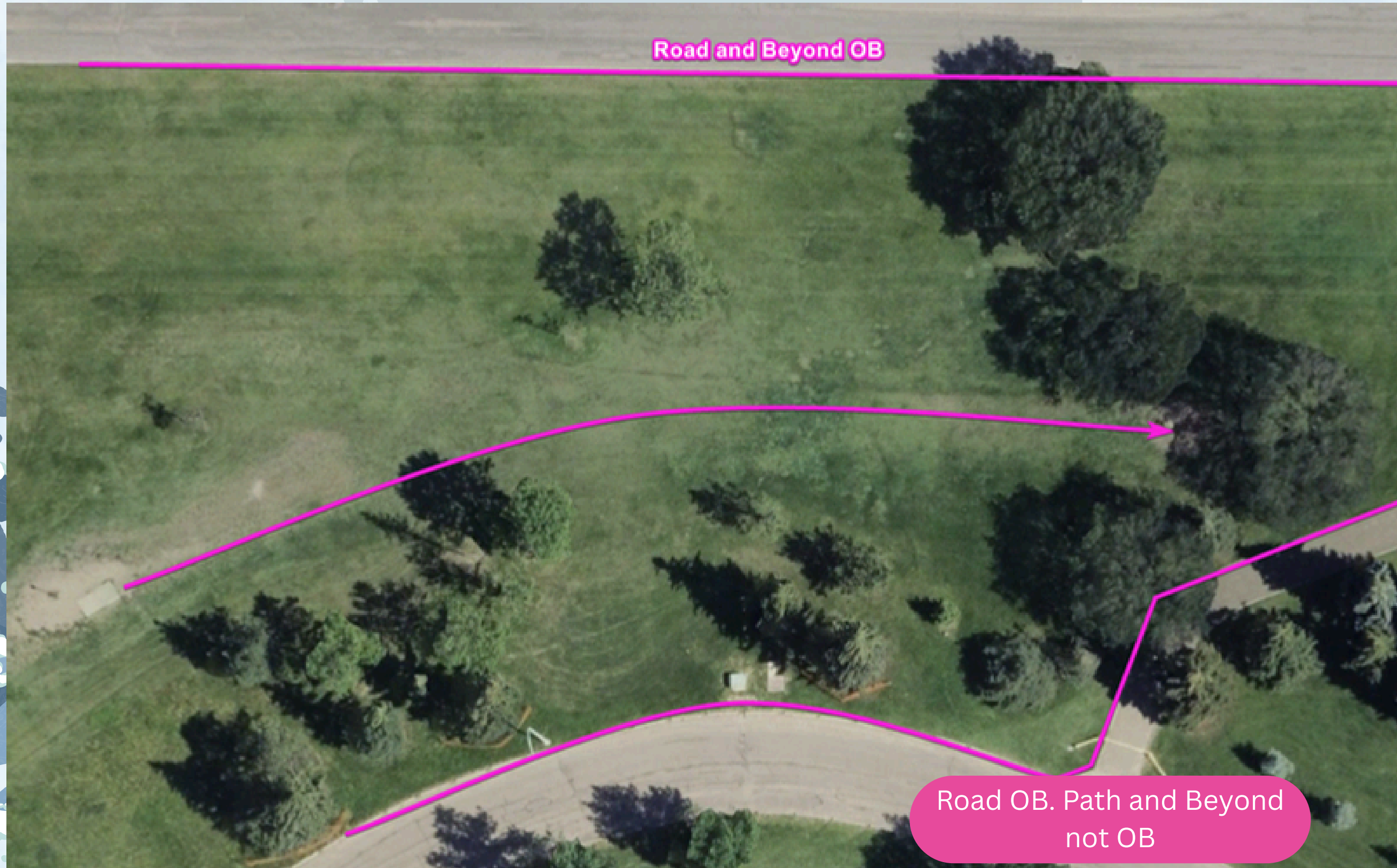
HOLE 4 PAR 3 243FT



HOLE 5 PAR 3 147FT



HOLE 6 PAR 3 260FT



HOLE 7 PAR 4 / 5 573 FT



HOLE 8 PAR 3 315FT



HOLE 9 PAR 3 300FT



Road and Beyond OB



HOLE 10 PAR 3 246FT



HOLE 11 PAR 3 214FT



HOLE 12 PAR 3 248FT



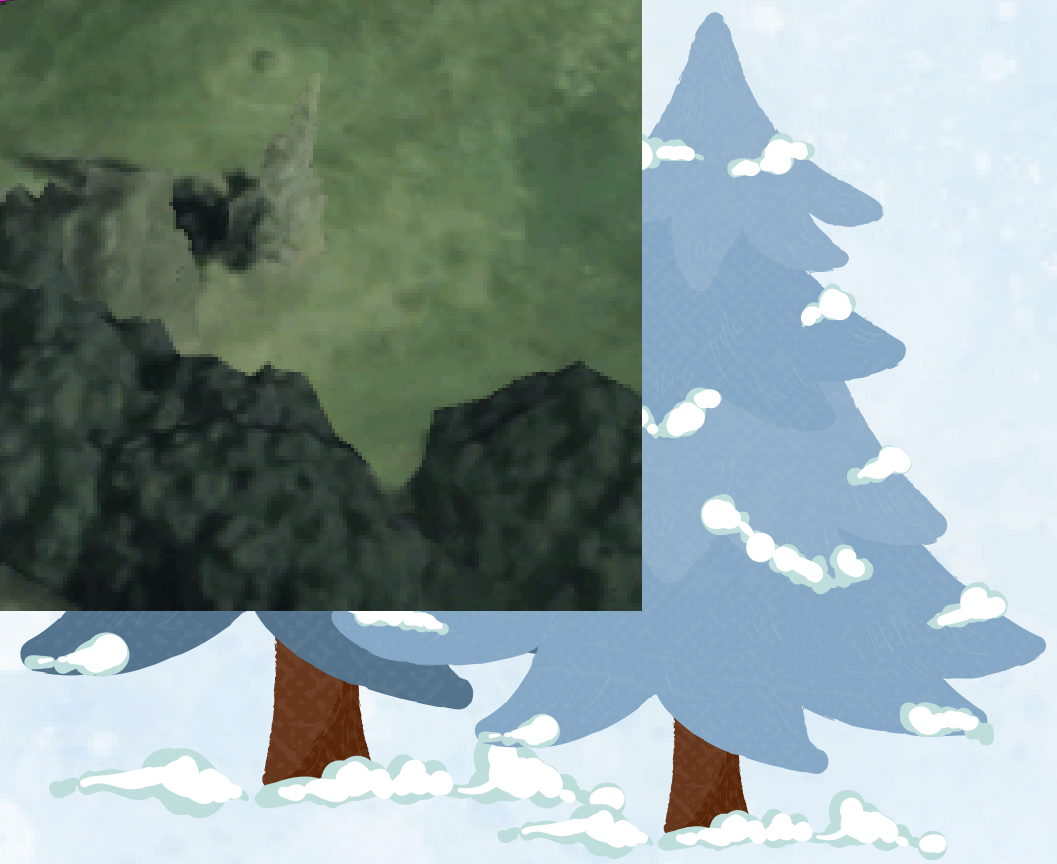
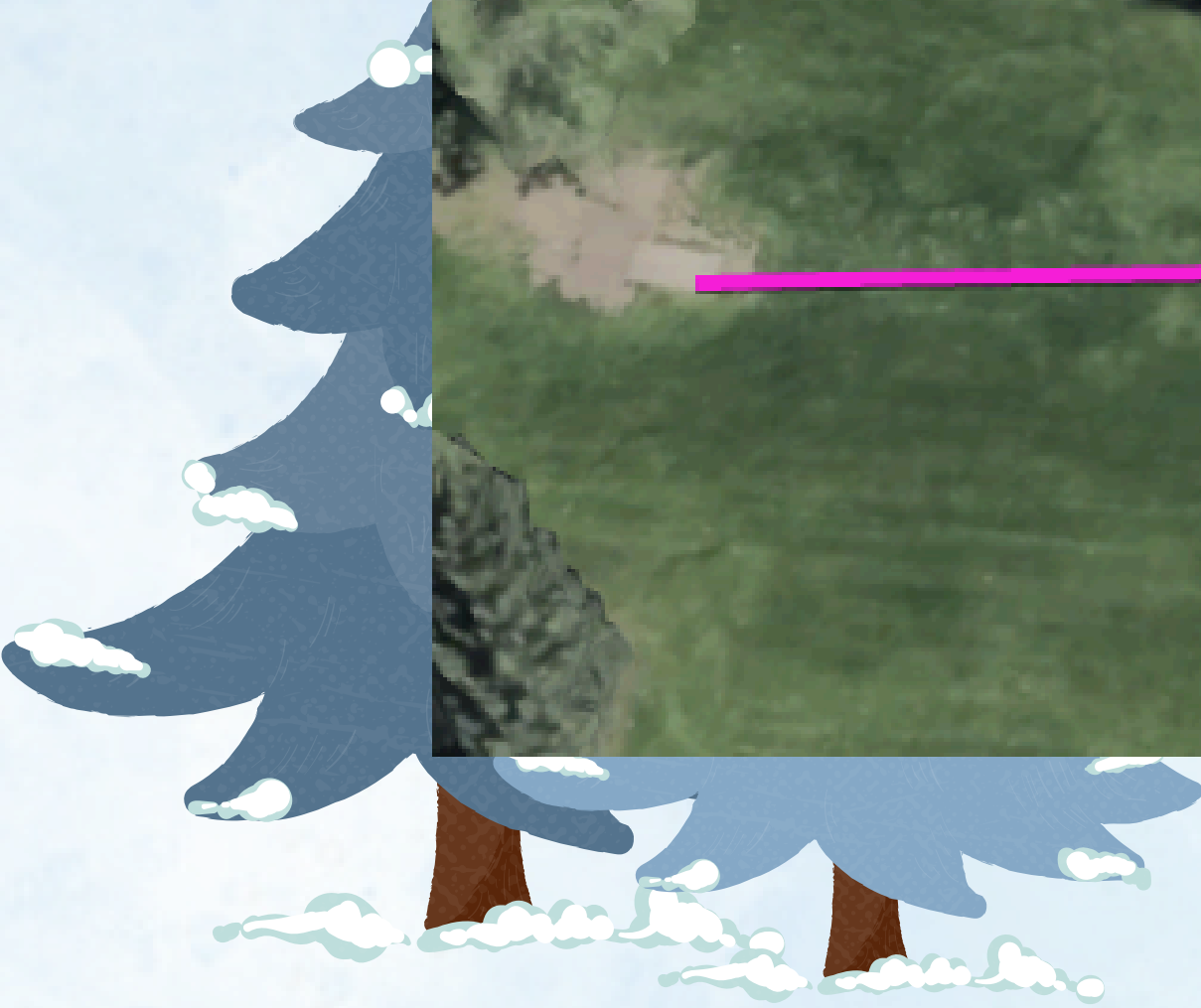
HOLE 13 PAR 3/4 369FT



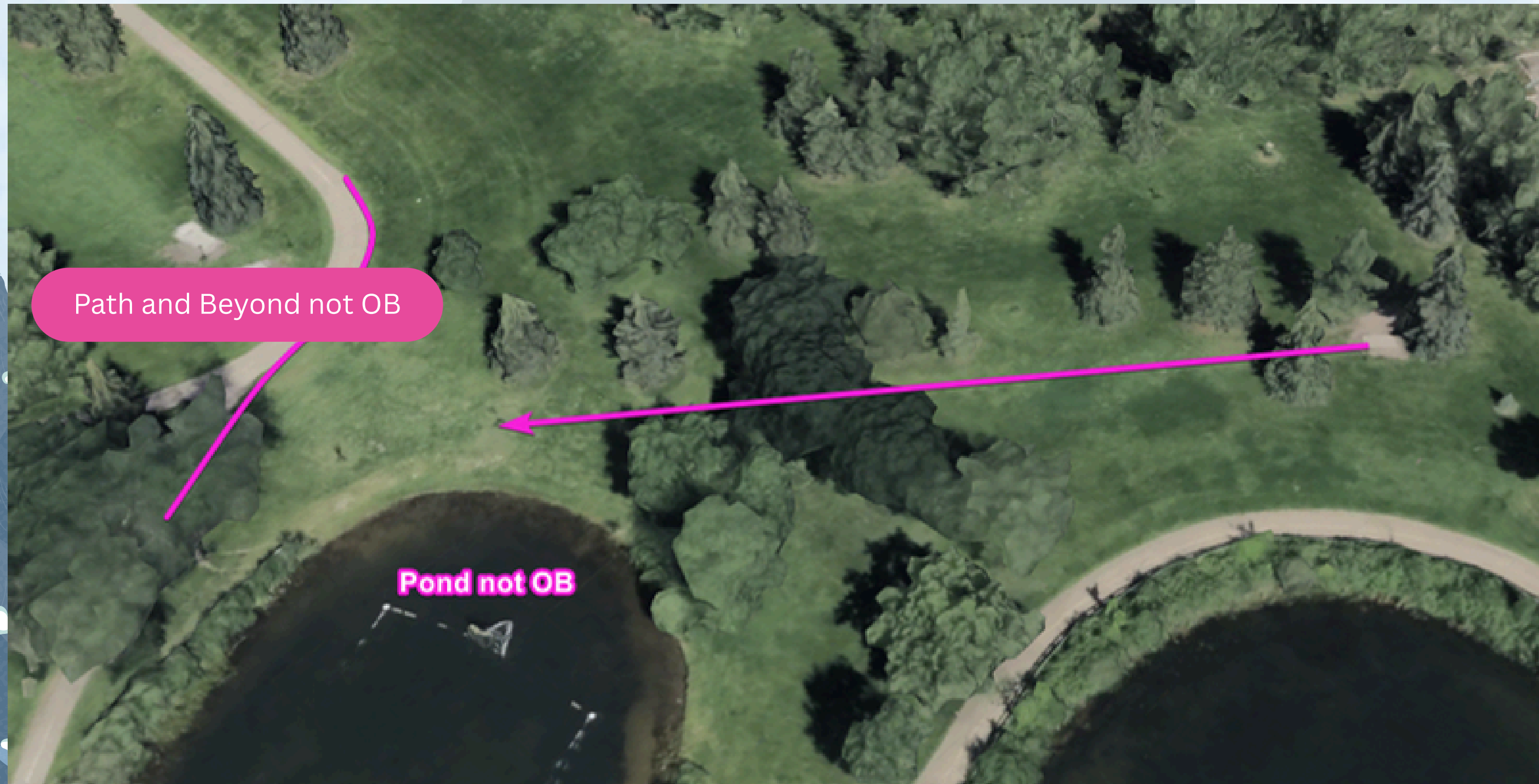
HOLE 14 PAR 3 161FT



HOLE 15 PAR 3 282FT

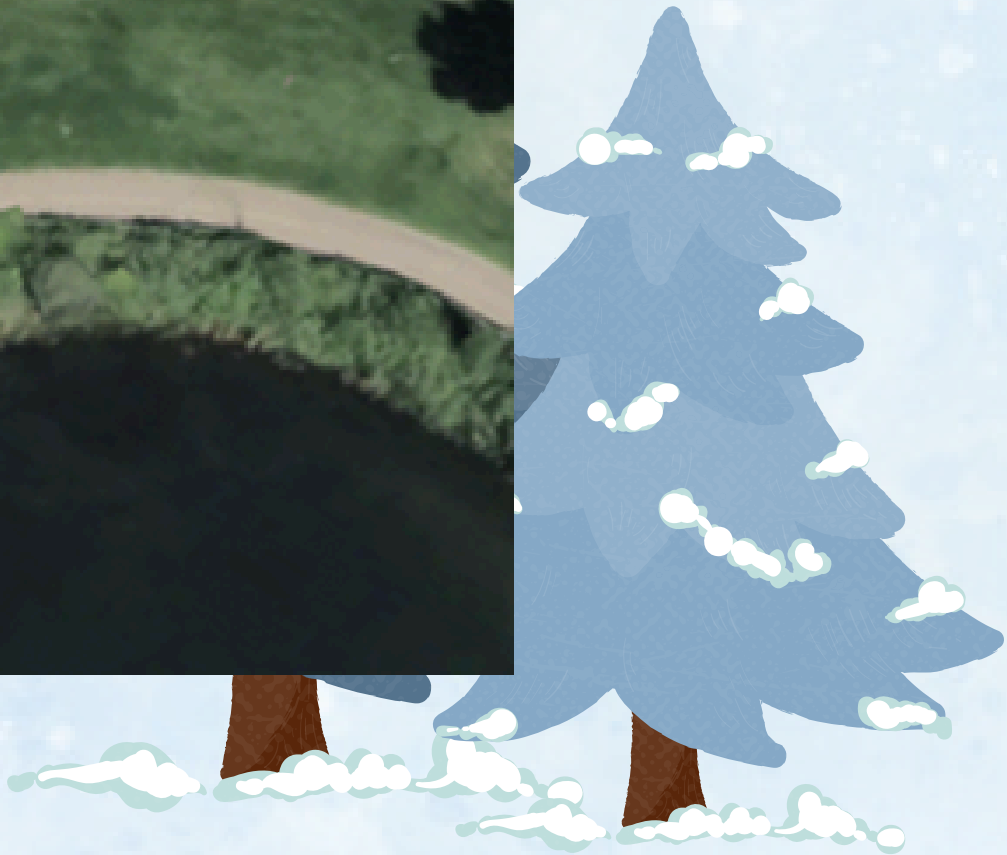


HOLE 16 PAR 3 249FT

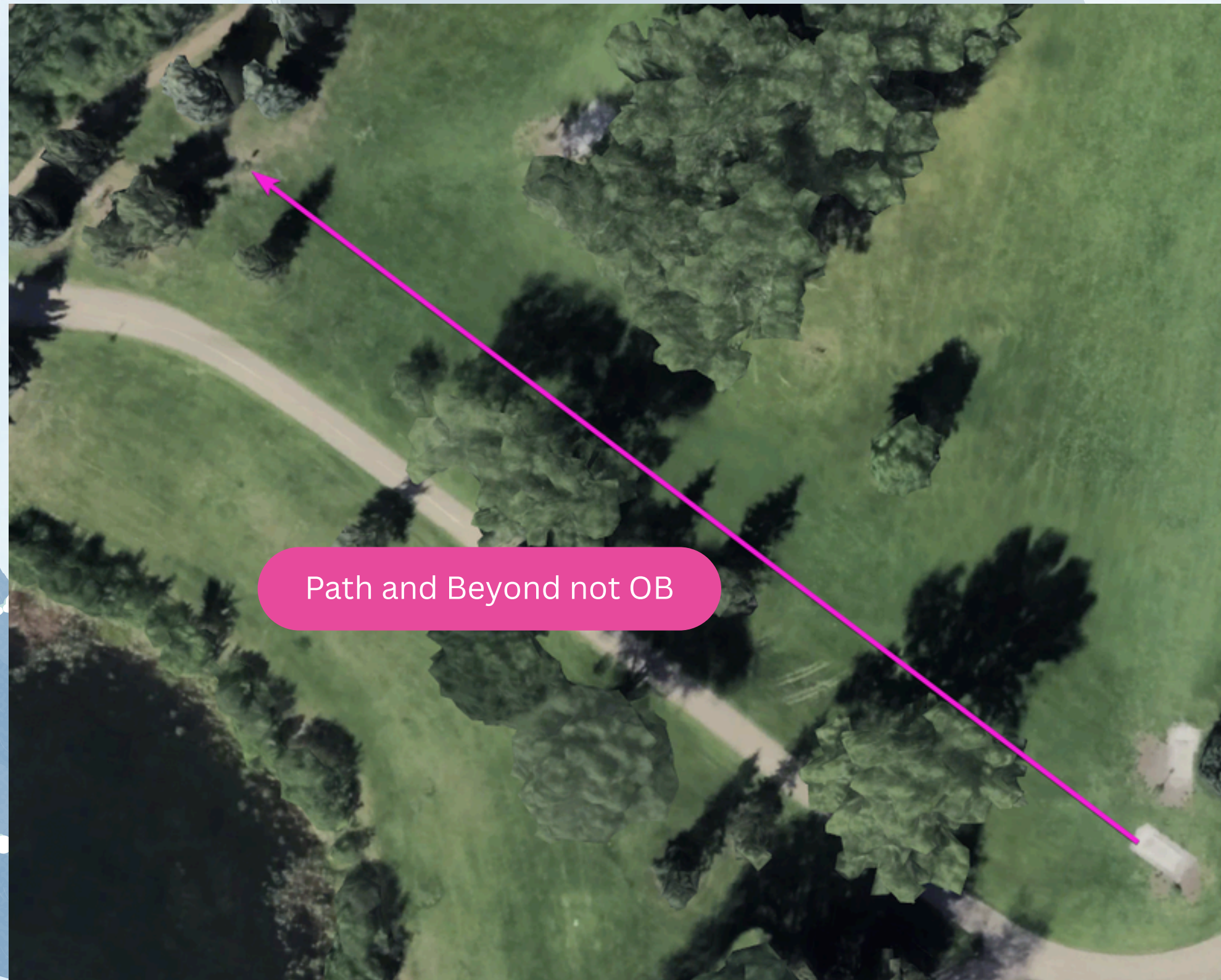


Path and Beyond not OB

Pond not OB



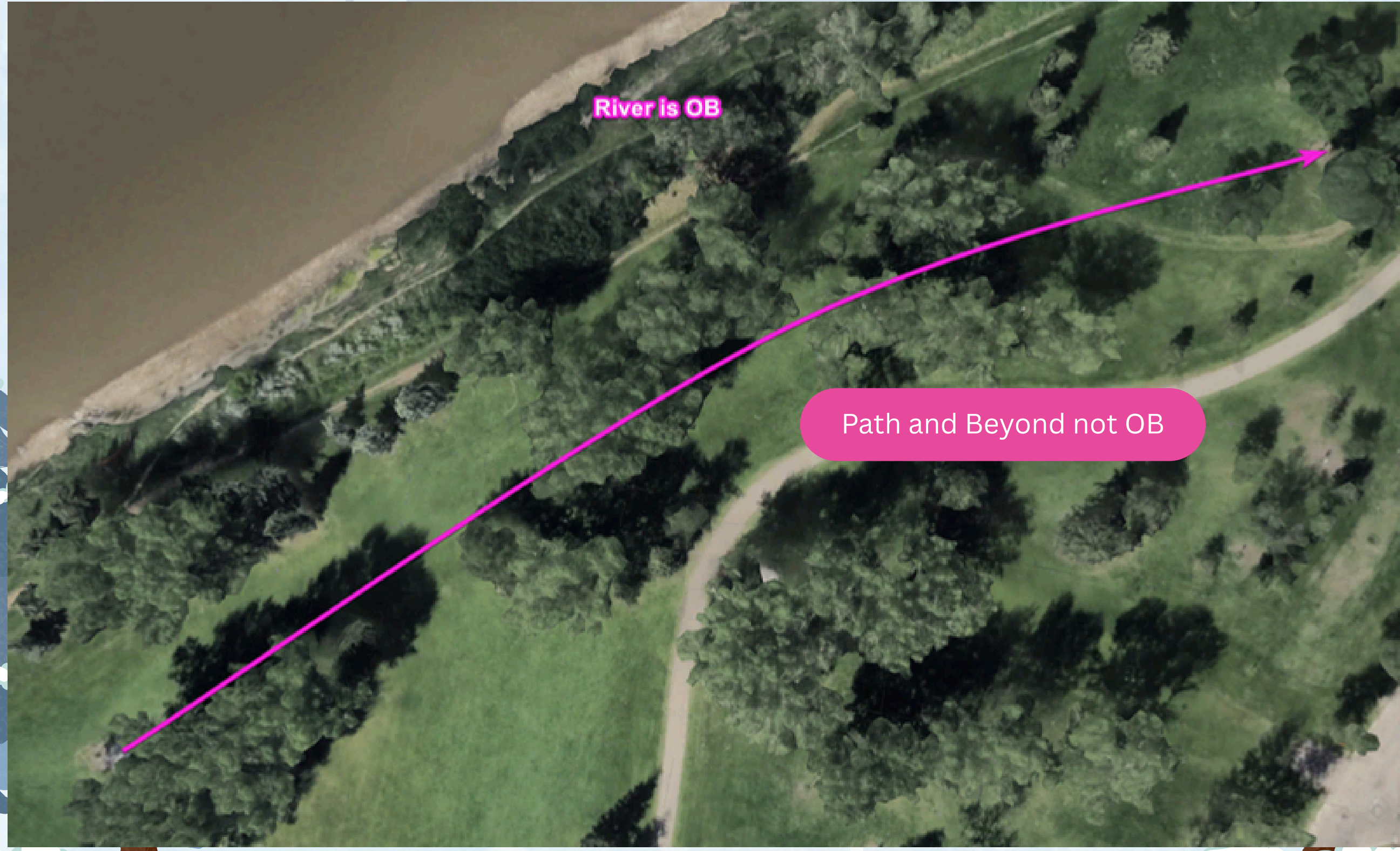
HOLE 17 PAR 3 270FT



Path and Beyond not OB



HOLE 18 PAR 4/5 574 FT



River is OB

Path and Beyond not OB



HOLE 19 PAR 3 130FT



**THANK
YOU**

