

Eleanor Spring Sling 2026 Caddy Book

General Course Notes: White Stakes, White Flags (Visual Marker), White paint, and the Main Road/Concrete Walking Paths define OB. 20 Holes in total.

Pool A: Longs
Pool B: Front 9 Longs Back Shorts
Pool C: Shorts

2 additional holes to existing layout, one in between holes 15 and 16 (15A) and one in between holes 18 and 1 (19)

Big thanks to our Sponsors Maddog Disc Shop for donating \$250 towards Am Payouts, Grumpy Goats DG and Innova Champion Discs



HOLE 1 — SHORT (ALL POOLS)

Par: 3

Distance: 200 ft

Tee: Short

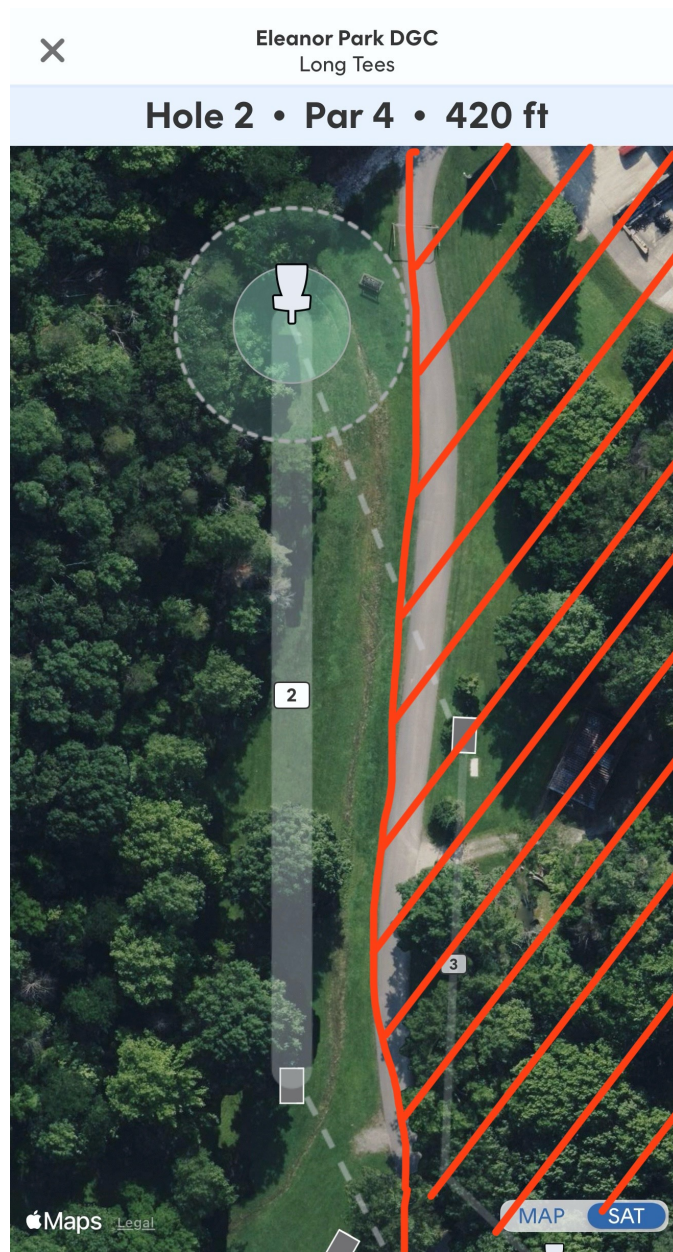
Notes: ALL POOLS PLAY FROM SHORTS ON HOLE 1. On or across road is OB. Stakes define OB.



HOLE 2 — LONGS (Pools A&B)
Par: 4
Distance: 420 ft
Tee: Long

SHORTS (Pool C)
Par: 4
Distance: 335 ft
Tee: Short

Notes: On or across road is OB.



HOLE 3 — LONGS (Pools A&B)

Par: 3

Distance: 325 ft

Tee: Long

SHORTS (Pool C)

Par: 3

Distance: 207 ft

Tee: Short

Notes: On or across road is OB. Creek is casual. Inside fence is OB.

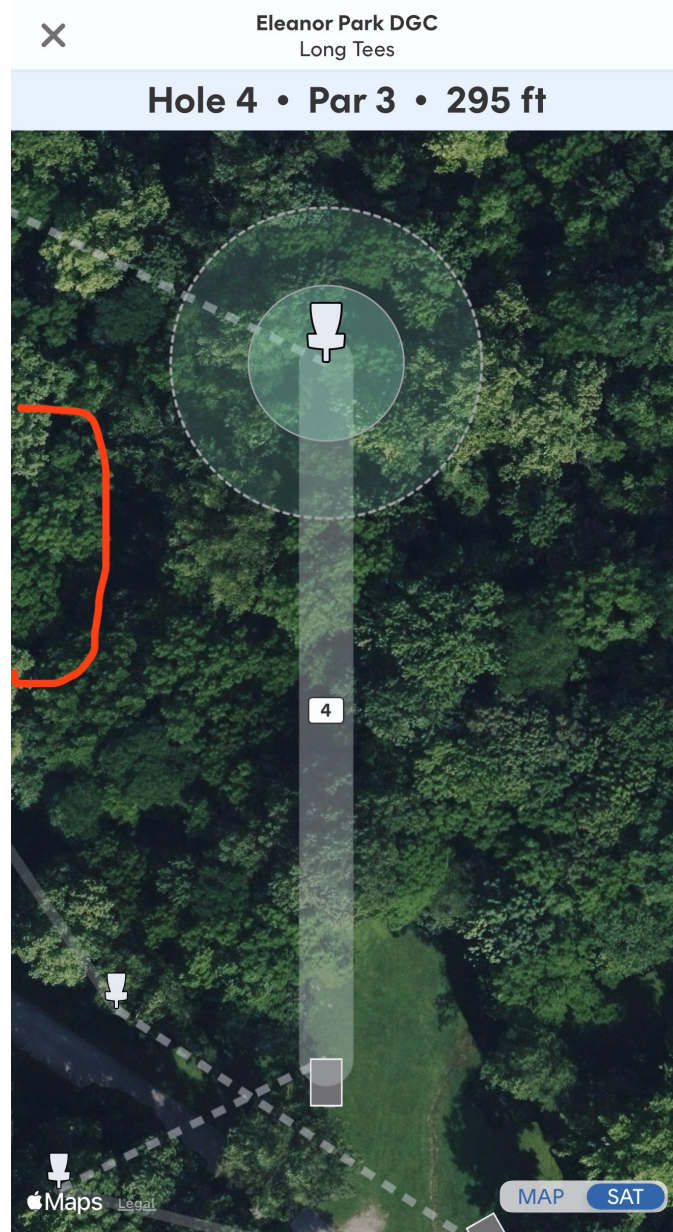


HOLE 4 – LONGS (Pools A&B)

Par: 3
Distance: 295 ft
Tee: Long

SHORTS (Pool C)
Par: 3
Distance: 243 ft
Tee: Short

Notes: OB disc fully surrounded by water in creek. OB on or across road. OB defined by stakes.



HOLE 5 – LONGS (Pools A&B)

Par: 4

Distance: 537 ft

Tee: Long

SHORTS (Pool C)

Par: 4

Distance: 433 ft

Tee: Short

Notes: If disc never crosses in bounds from Long tee, proceed to Short tee. From Short tee, if disc never crosses in bounds, proceed to Drop Zone. If disc crosses in bounds then lands OB, player may take last in bounds or Drop Zone. Stakes, on or across road, and area right/before bridge are OB.



HOLE 6 — LONGS (Pool A&B)

Par: 3
Distance: 195 ft
Tee: Long

SHORTS (Pool C)

Par: 3
Distance: 167 ft
Tee: Short

Notes: Plays as an island. If missed from tee, proceed to Drop Zone. Subsequent OB plays last in bounds.



HOLE 7 — LONGS (Pools A&B)

Par: 3

Distance: 215 ft

Tee: Long

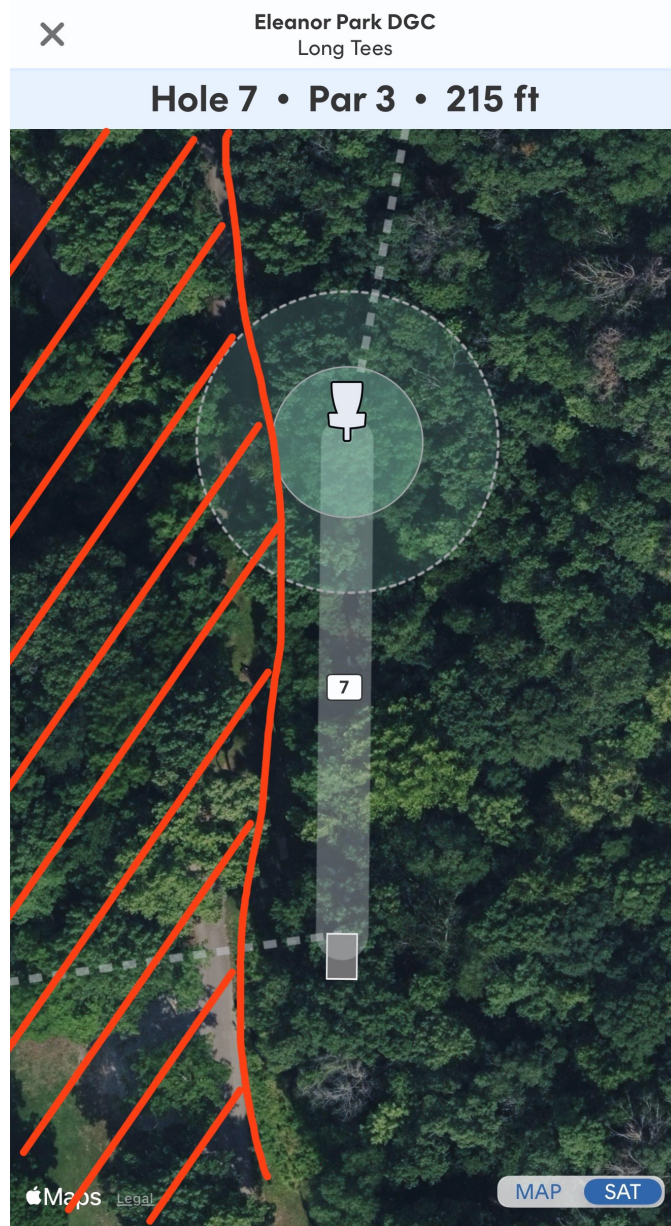
SHORTS (Pool C)

Par: 3

Distance: 185 ft

Tee: Short

Notes: On or across road is OB.



HOLE 8 — LONGS (Pools A&B)

Par: 3

Distance: 260 ft

Tee: Long

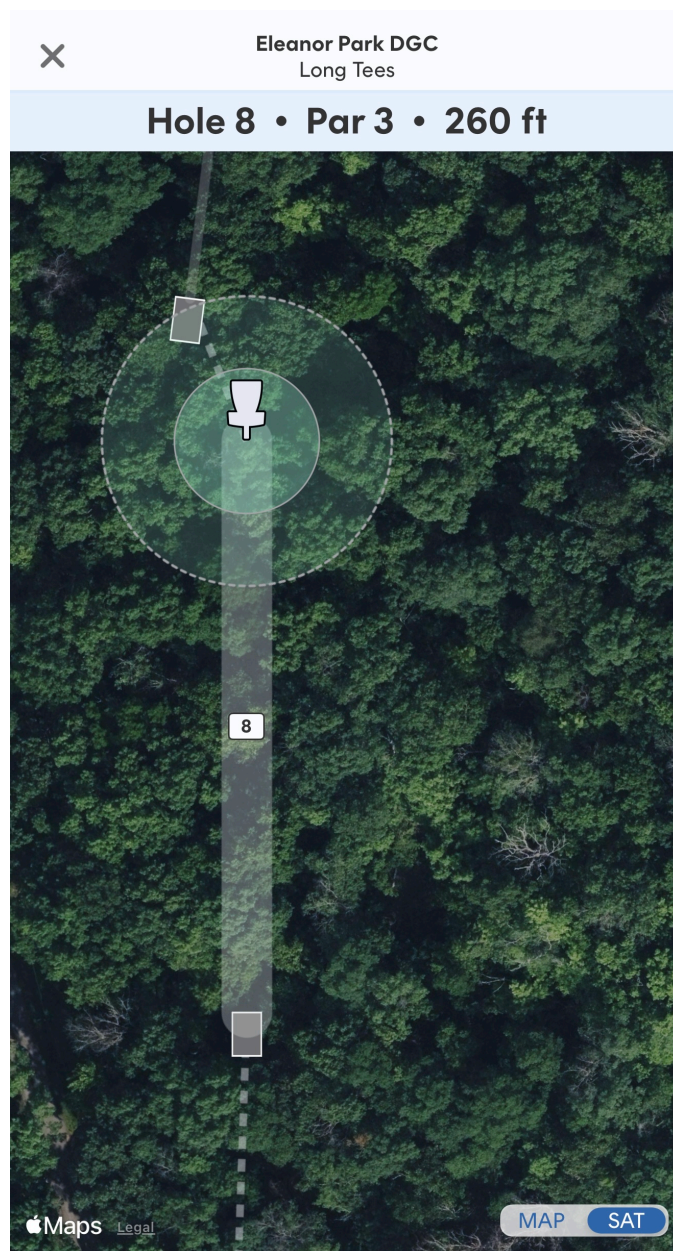
SHORTS (Pool C)

Par: 3

Distance: 223 ft

Tee: Short

Notes: On or across road is OB.



HOLE 9 – LONGS (Pools A&B)

Par: 3

Distance: 220 ft

Tee: Long

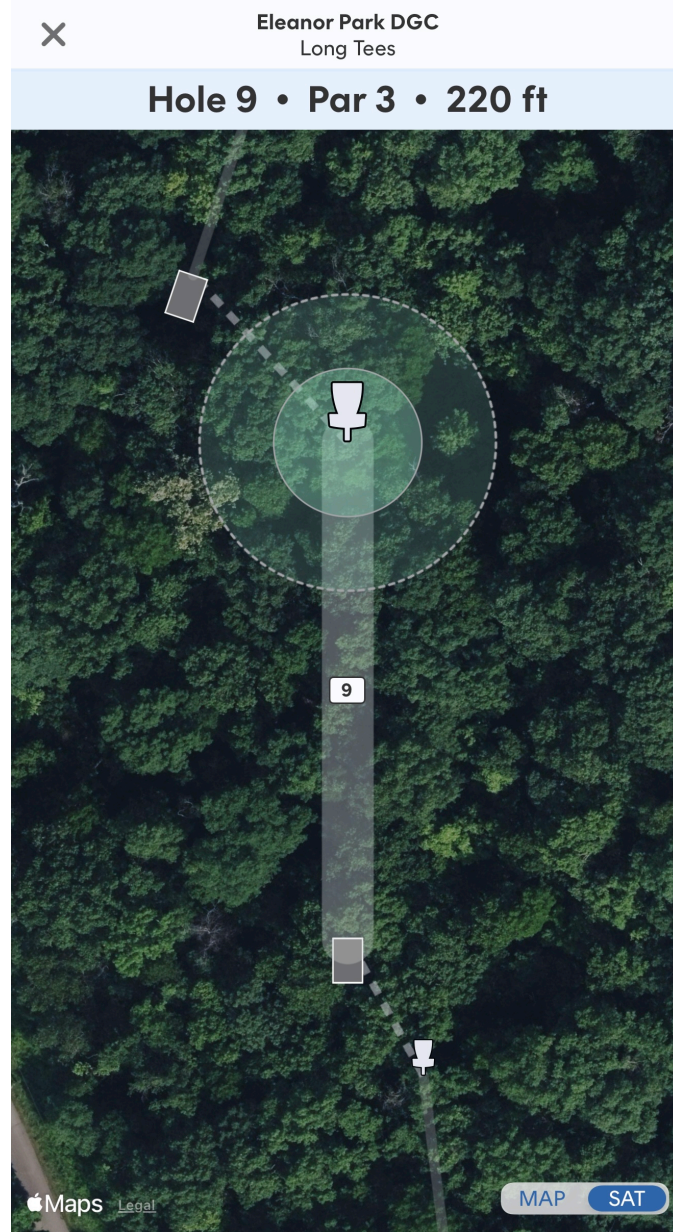
SHORTS (Pool C)

Par: 3

Distance: 163 ft

Tee: Long

Notes: Use caution on the rock. Optional casual relief allowed if footing is unsafe. Must complete hole in basket (disregard sign).



HOLE 10 — LONGS (Pool A)

Par: 3

Distance: 232 ft

Tee: Long

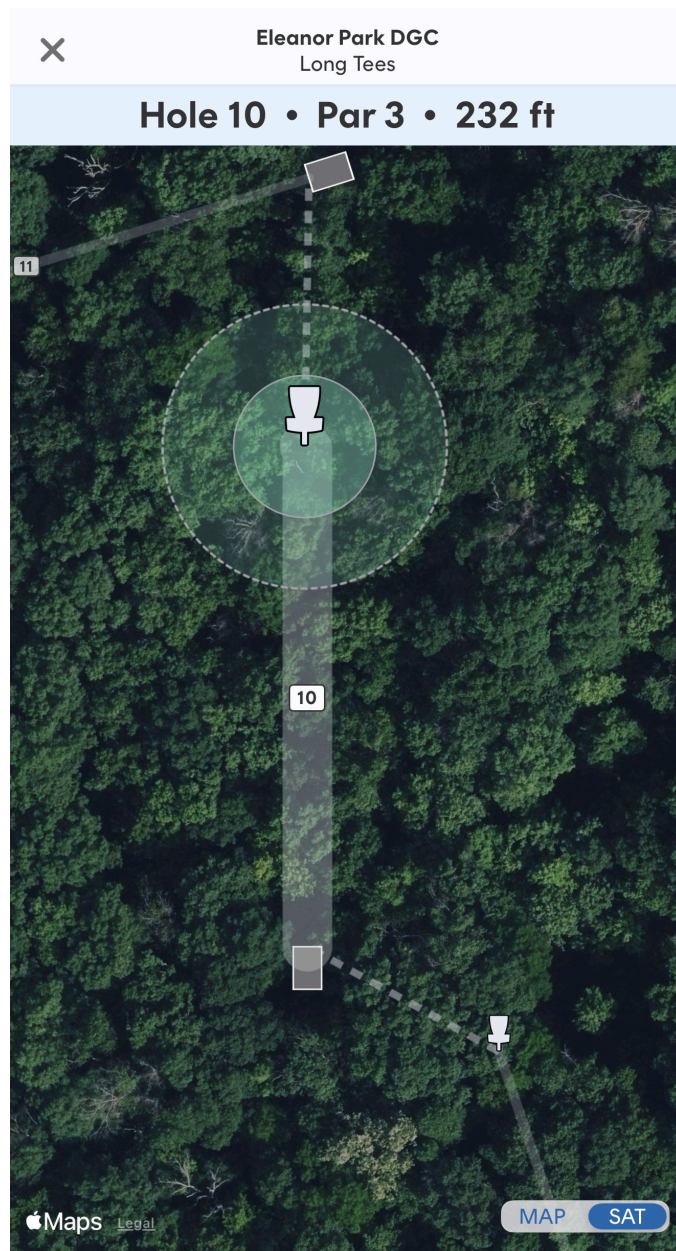
SHORTS (Pools B&C)

Par: 3

Distance: 157 ft

Tee: Short

Notes:



HOLE 11 — LONGS (Pool A)

Par: 3
Distance: 300 ft
Tee: Long

SHORTS (Pools B&C)

Par: 3
Distance: 248 ft
Tee: Short

Notes: On or across road is OB.



HOLE 12 — LONGS (Pool A)

Par: 4
Distance: 434 ft
Tee: Long

SHORT (Pools B&C)

Par: 4
Distance: 344 ft
Tee: Short

Notes: (No notes provided in rules document.)



HOLE 13 — LONGS (Pool A)

Par: 3
Distance: 213 ft
Tee: Long

SHORTS (Pools B&C)

Par: 3
Distance: 185 ft
Tee: Short

Notes: Plays as an island. If disc never crosses in bounds, proceed to Drop Zone. If disc crosses in bounds then lands OB, player may take last in bounds or Drop Zone.



HOLE 14 — LONGS (Pool A)

Par: 3
Distance: 366 ft
Tee: Long

SHORTS (Pools B&C)

Par: 3
Distance: 280 ft
Tee: Short

Notes: Gravel road is in bounds.



HOLE 15 — LONGS (Pool A)

Par: 4
Distance: 555 ft
Tee: Long

SHORTS (Pools B&C)

Par: 4
Distance: 490 ft
Tee: Short

Notes: OB on and left of path (flagged).



HOLE 15A – LONGS (Pool A)

Par: 3
Distance: 285 ft
Tee: Long

SHORTS (Pools B&C)

Par: 3
Distance: 200 ft
Tee: Short

Notes: OB on and left of path/bridge (flagged). Staked OB right (creek). If tee shot from Longs never crosses in bounds, proceed to Short tee. From Short tee, if shot never crosses in bounds, proceed to marked Drop Zone. If shot crosses in bounds then goes OB, player may take last in bounds or Drop Zone. (Grass short right of path is in bounds)



HOLE 16 — LONGS (Pool A)

Par: 4
Distance: 605 ft
Tee: Long

SHORTS (Pools B&C)

Par: 4
Distance: 434 ft
Tee: Short

Notes: OB painted left. One OB line separates Holes 16 & 17 — play the OB line, not the road. If on the road on the right side of the line, you are safe. OB in creek (surrounded by water).



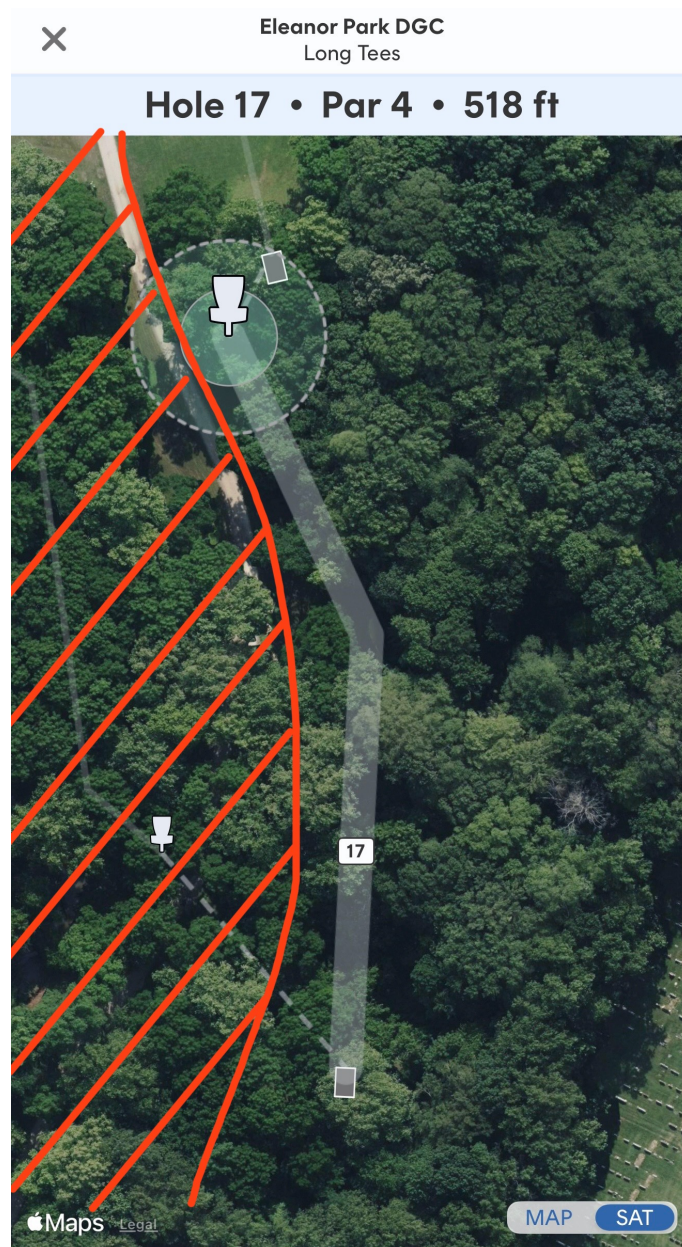
HOLE 17 — LONGS (Pool A)

Par: 4
Distance: 518 ft
Tee: Long

SHORTS (Pools B&C)

Par: 4
Distance: 494 ft
Tee: Short

Notes: Painted line left or across is OB. One OB line separates Holes 16 & 17 — play the OB line, not the road.



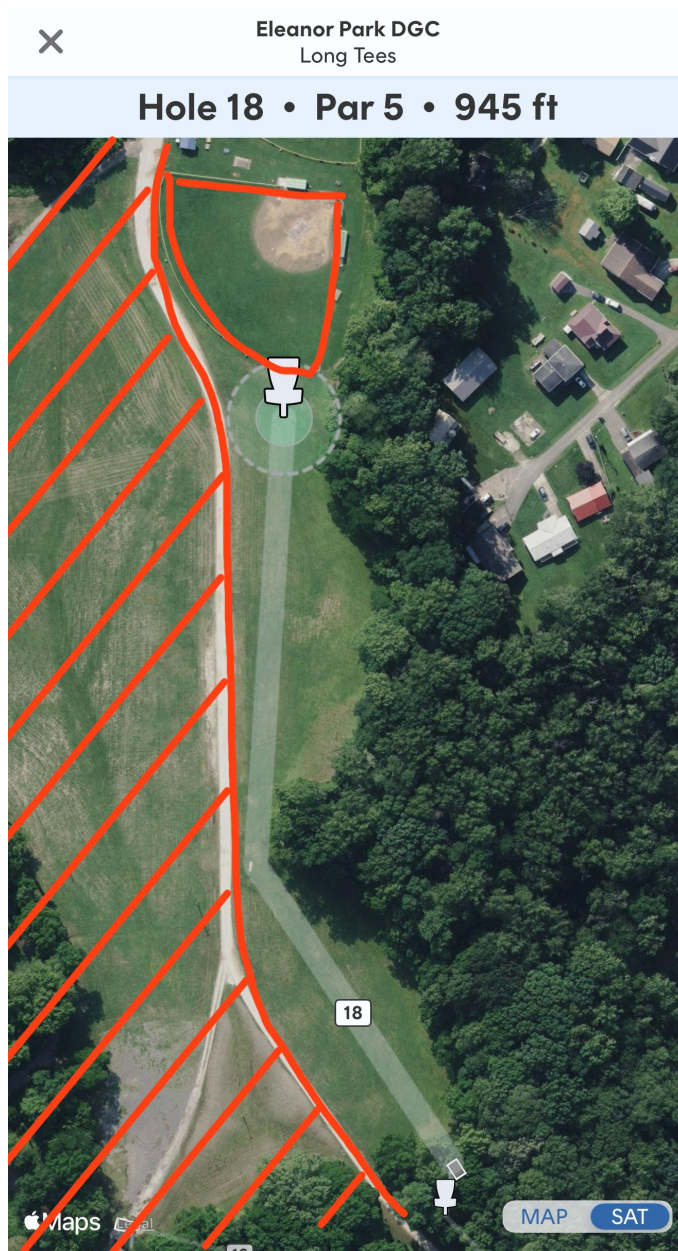
HOLE 18 — LONGS (Pool A)

Par: 5
Distance: 945 ft
Tee: Long

SHORTS (Pools B&C)

Par: 4
Distance: 525 ft
Tee: Short

Notes: Painted line left or across is OB. Baseball field is OB.



HOLE 19 — LONGS (Pool A) Playing to the right practice basket

Par: 3
Distance: 210 ft
Tee: Long

SHORT (Pools B&C)
Par: 3
Distance: 160 ft
Tee: Short

Notes: Have a card member spot for oncoming cars right of building. This hole is an island.
Any shot missing the island proceeds to Drop Zone. Mando right — if missed, proceed to Drop Zone. Road defines island; disc must be touching grass inside road to be in bounds.

