

# Livin' La Vida LaCroix, presented by Zymurcracy

Part of the West River Championship Series

Saturday, April 18, 2026

## Redemption Series @ LaCroix

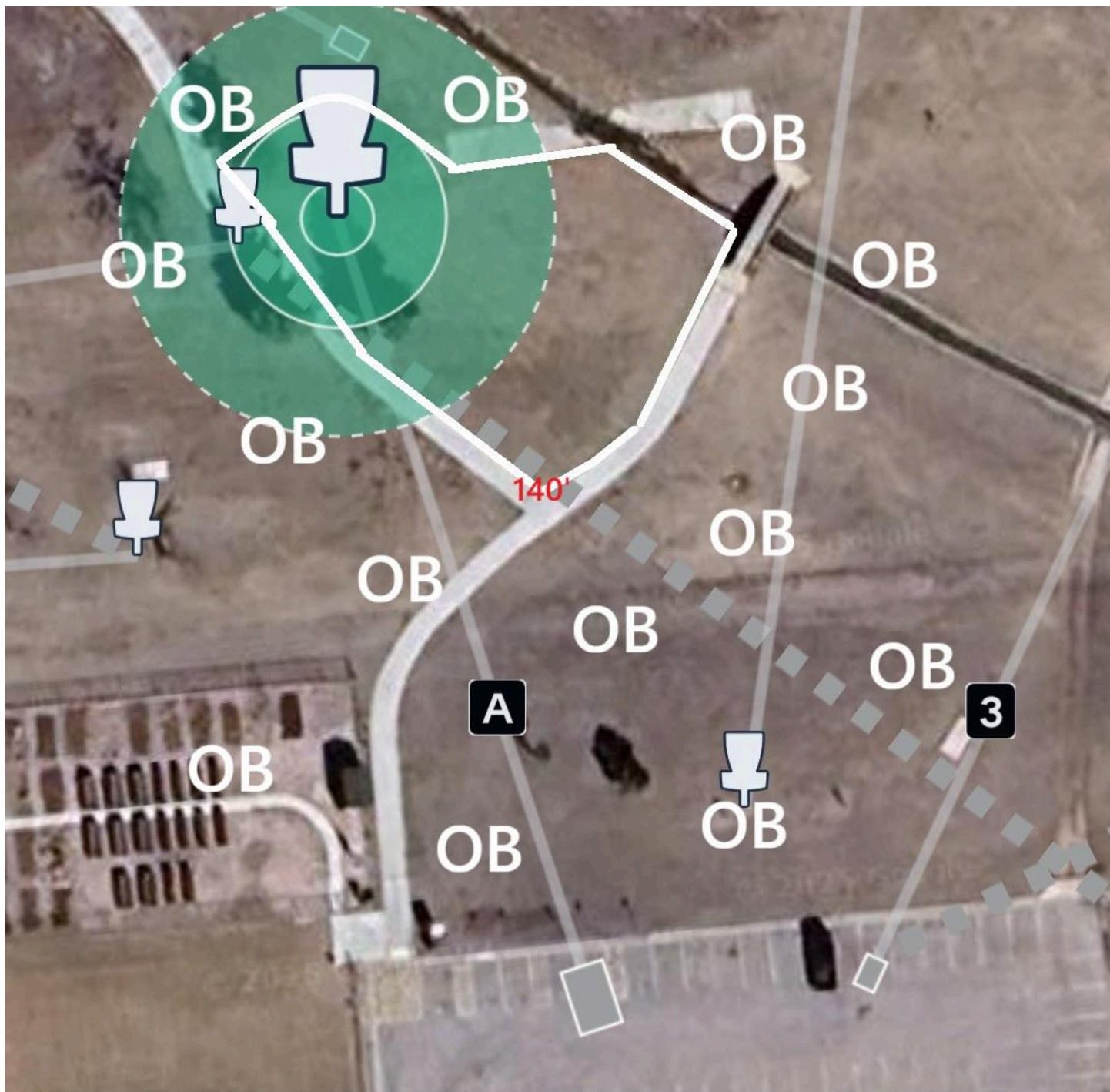
Sunday, April 19, 2026



Hole	Tee Pad	Basket	Distance	Par	Notes
A	Temp A	Basket 18 Deep	237'	3	<b>ISLAND HOLE</b> The island is formed by the sidewalks, concrete drainage ditch, and OB line connecting them. The sidewalk and drainage ditch are OB. This hole plays as a traditional OB. If you do not establish in bounds, retee with a one stroke penalty. <b>Do not throw if players are on Tee Pad B.</b>
B	Temp B	Basket 16	279'	3	OB sidewalk and beyond left. OB concrete drainage ditch and beyond right. OB bridge and beyond. <b>Be aware of players on Hole C.</b>
C	Tee 11 Back	Basket 15	406'	3	<b>TEE FROM OB</b> If you do not establish in bounds, retee with a one stroke penalty. OB sidewalk and short. <b>Be aware of players on Hole B.</b>
D	Temp D	Basket 14	541'	4	<b>DOUBLE MANDO</b> between marked trees. If either mando is missed, proceed to the DZ with a one stroke penalty. OB sidewalk and beyond. OB fence and beyond.
E	Temp E	Basket 13	320'	3	OB fence and beyond. <b>Do not throw if players are on tee pad 14.</b>
F	Tee 14 Back	Temp F	366'	3	OB fence and beyond. OB sidewalk and beyond.
18	Tee 18	Basket 18	235'	3	<b>DOUBLE MANDO</b> between marked trees. If either mando is missed, proceed to the DZ with a one stroke penalty. OB sidewalk and beyond.
1	Tee 1	Temp 1	494'	4	OB right of sidewalk and beyond. Sidewalk plays as OB. OB left and deep of the marked line.
2	Temp 2	Basket 2	454'	4	OB right of fence, marked line connecting the fence to the concrete drainage and concrete drainage. The concrete drainage plays as OB left of marked line.
3	Temp 3	Basket 3	303'	3	<b>RIVER ISLAND HOLE</b> The river starts at the concrete drainage. Play as a traditional OB.
4	Tee 4	Basket 4	315'	3	OB marked line and beyond.
5	Temp 5	Basket 7	330'	3	<b>MANDO LEFT</b> of the marked tree. If mando is missed, proceed to DZ with a one stroke penalty. If you land in the shelter, take casual relief behind your lie.

Hole	Tee Pad	Basket	Distance	Par	Notes
5A	Temp 5A	Basket 5	270'	3	OB fence and beyond.
6	Temp 6	Basket 6	328'	3	OB fence and beyond.
7/8	Tee 7	Basket 8	246'	3	
9	Tee 9	Temp 9	528'	4	<b>MANDO RIGHT</b> of marked tree. If mando is missed, proceed to DZ with a one stroke penalty. OB right of tall grass/marked line and wooden retaining walls. OB deep and right of the marked line.
11	Temp 11	Basket 11	711'	4	<b>DOUBLE MANDO</b> between marked trees. If either mando is missed proceed to DZ with a one stroke penalty. OB left of marked line. OB right of concrete drainage. Concrete drainage plays as OB.
12	Tee 12	Practice Basket	543'	4	<b>RIVER ISLAND HOLE</b> . The river is formed by the concrete drainage ditch, the concrete drainage plays as OB, and the OB marked line after the creek. OB marked line and left. OB sidewalk and right. OB pavement and beyond. Plays as a traditional OB.
		<b>Totals</b>	6,712'	60	





**Hole A**

237 ft

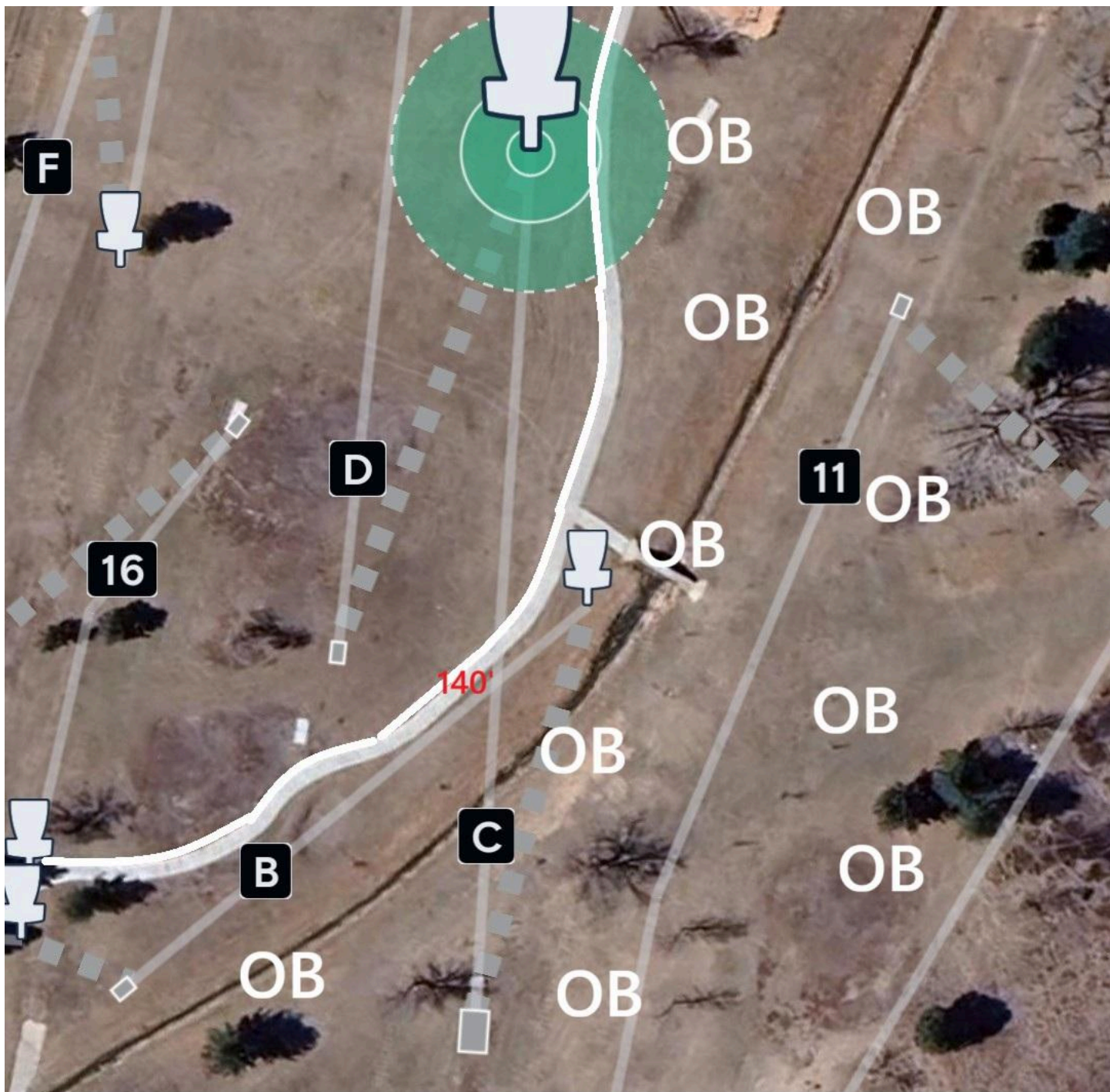
**Par 3**



**Hole B**

279 ft

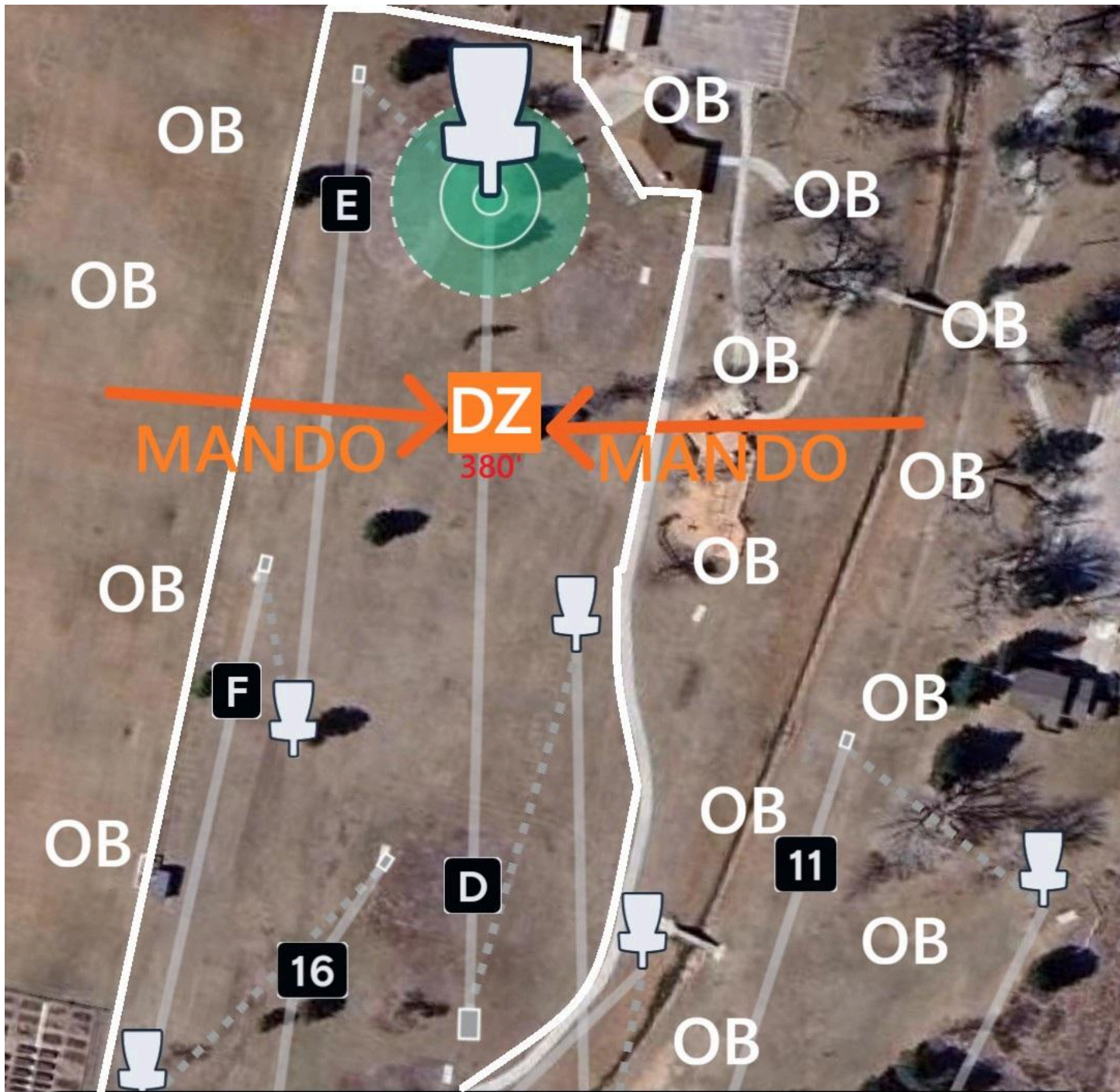
**Par 3**



**Hole C**

406 ft

**Par 3**



**Hole D**

541 ft

**Par 4**



**Hole E**

286 ft

**Par 3**



**Hole F**

366 ft

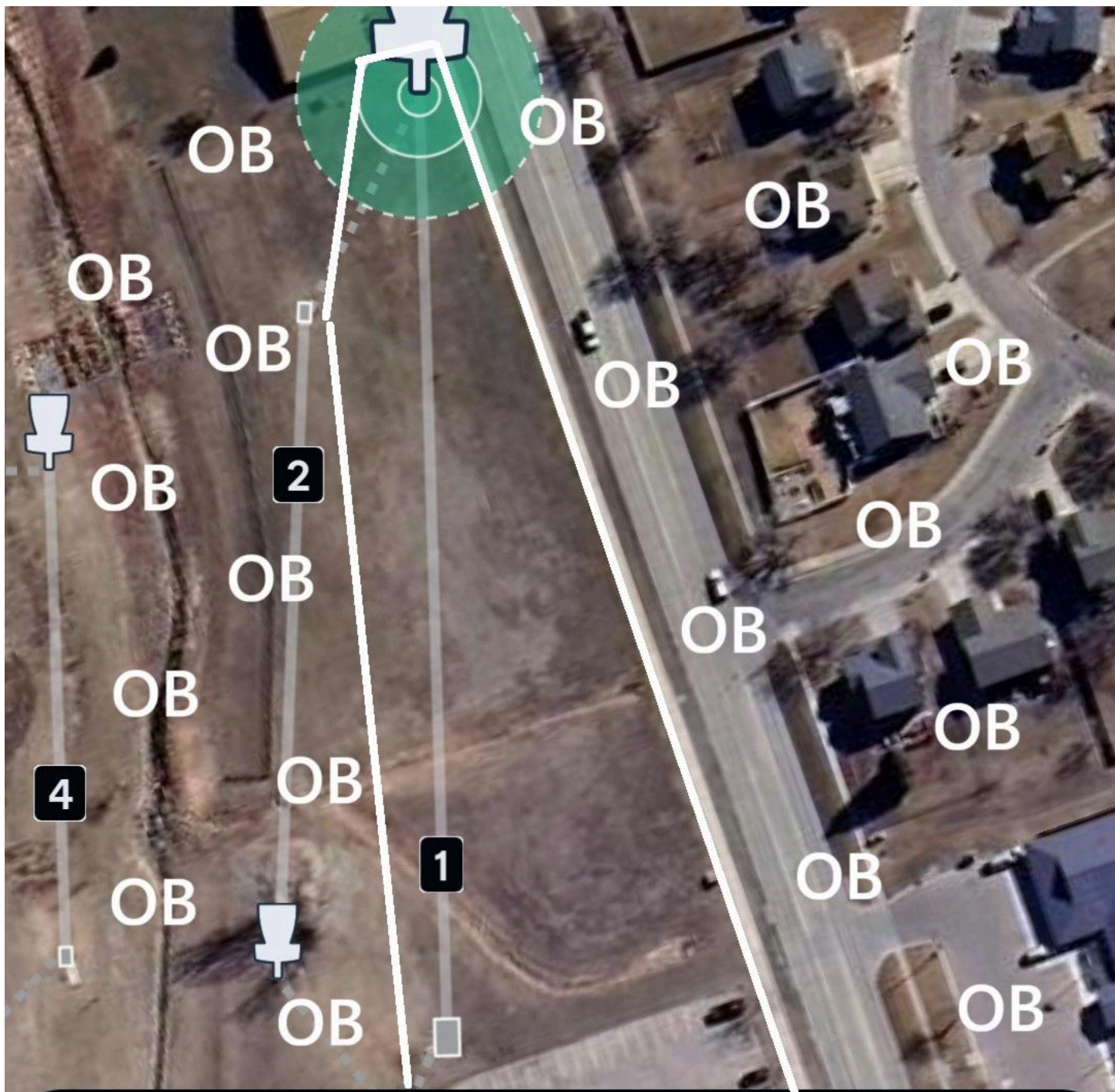
**Par 3**



**Hole 18**

235 ft

**Par 3**



**Hole 1**

494 ft

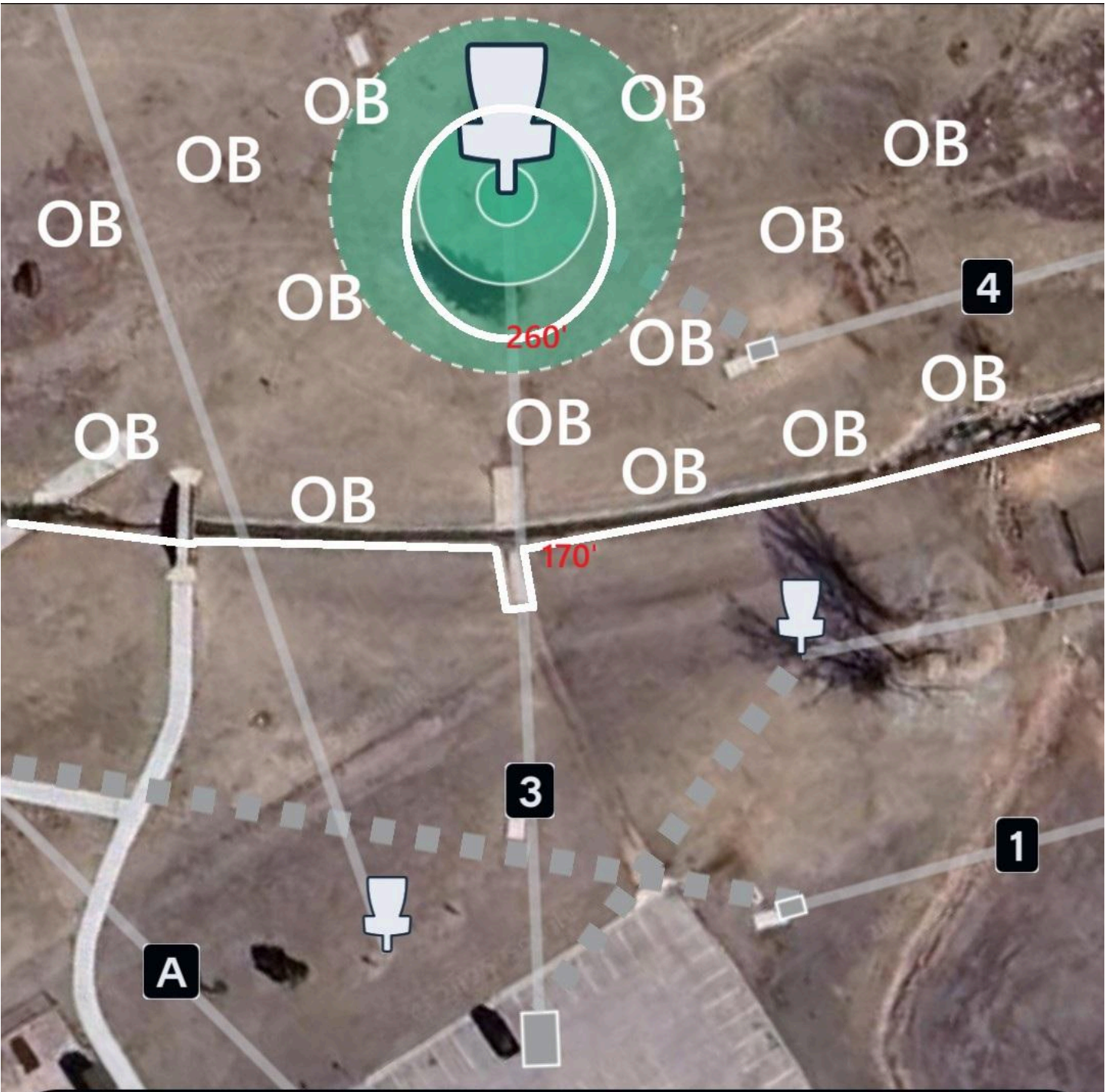
**Par 4**



**Hole 2**

454 ft

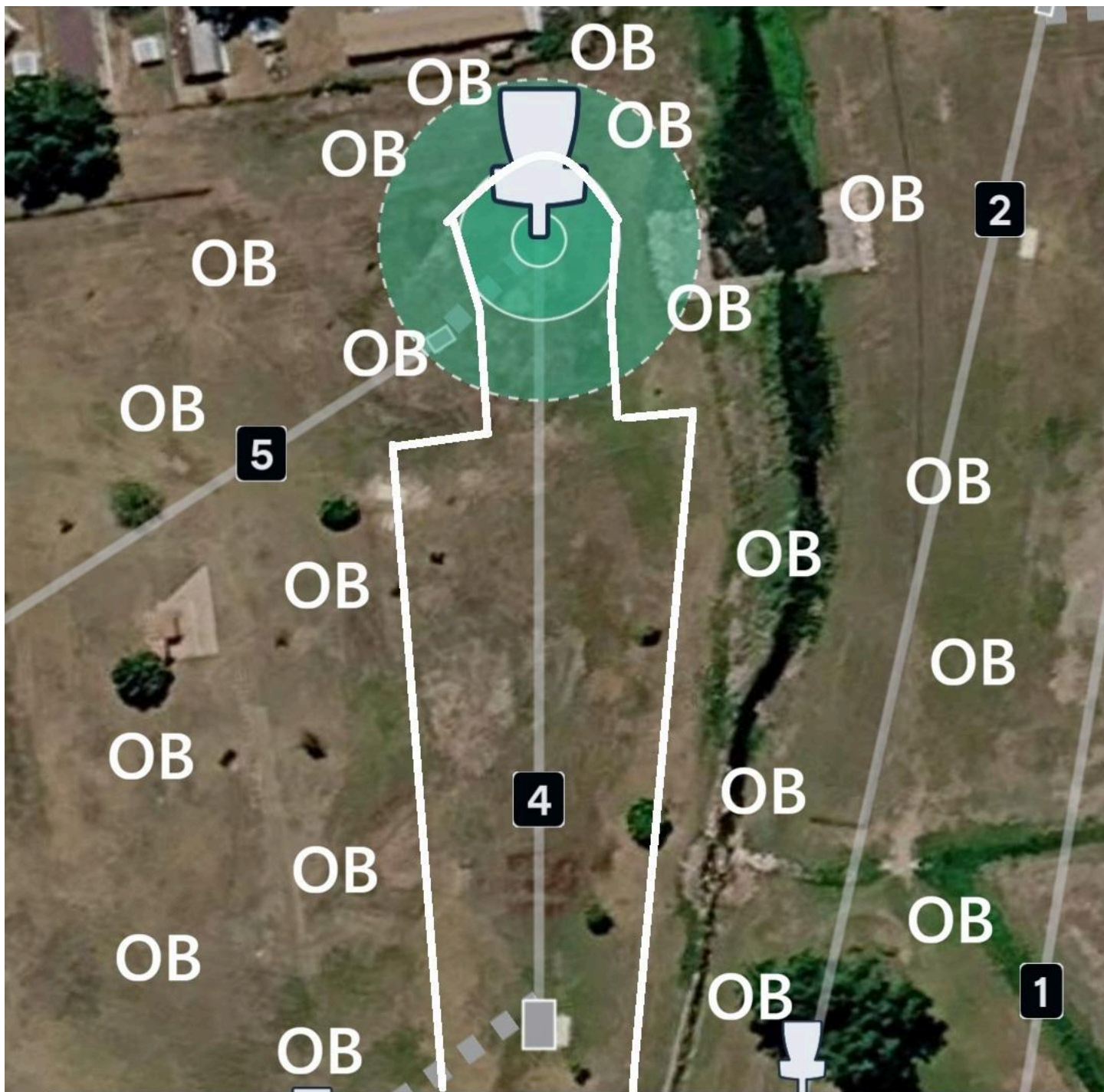
**Par 3**



**Hole 3**

303 ft

**Par 3**



**Hole 4**

315 ft

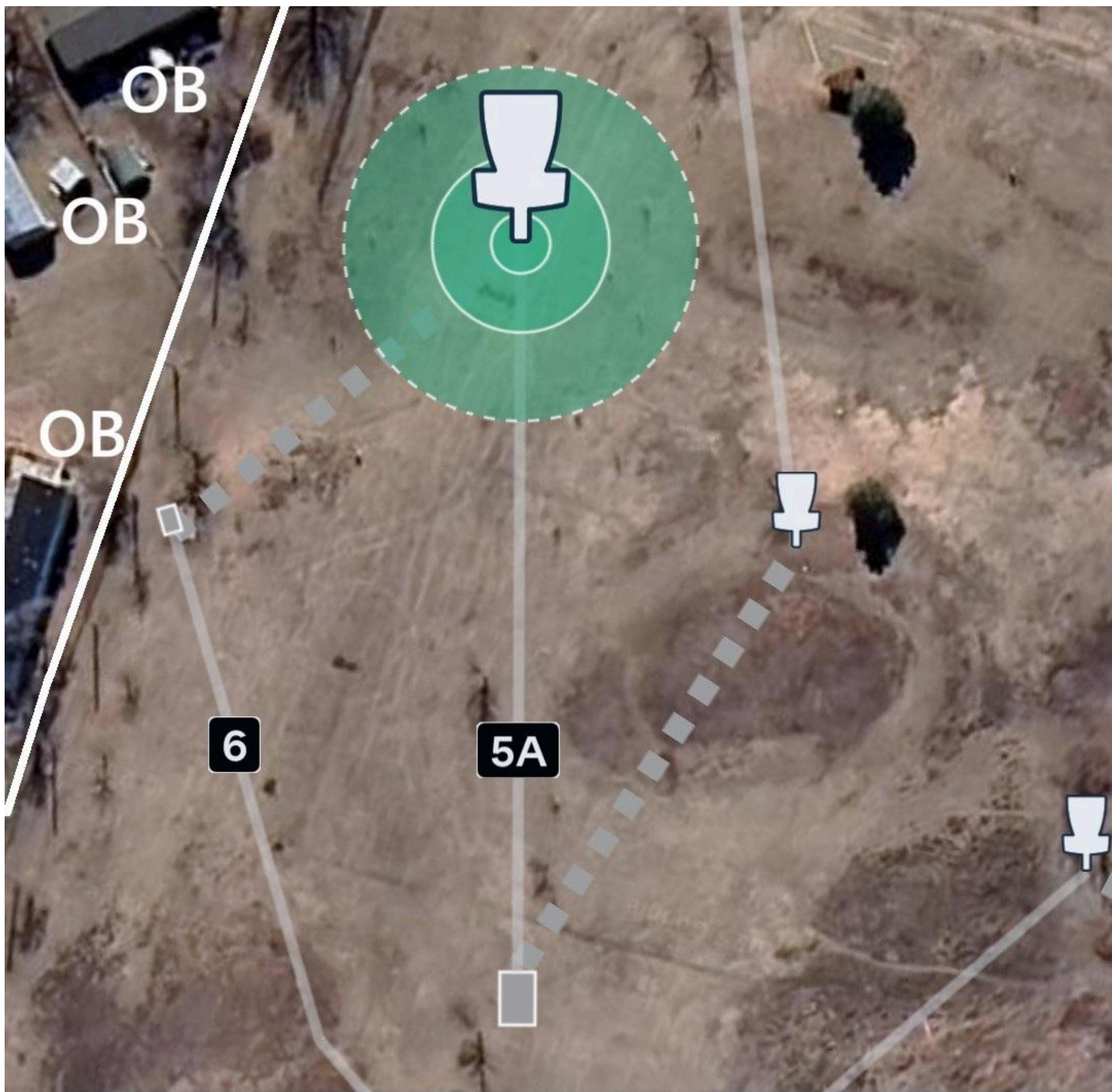
**Par 3**



**Hole 5**

330 ft

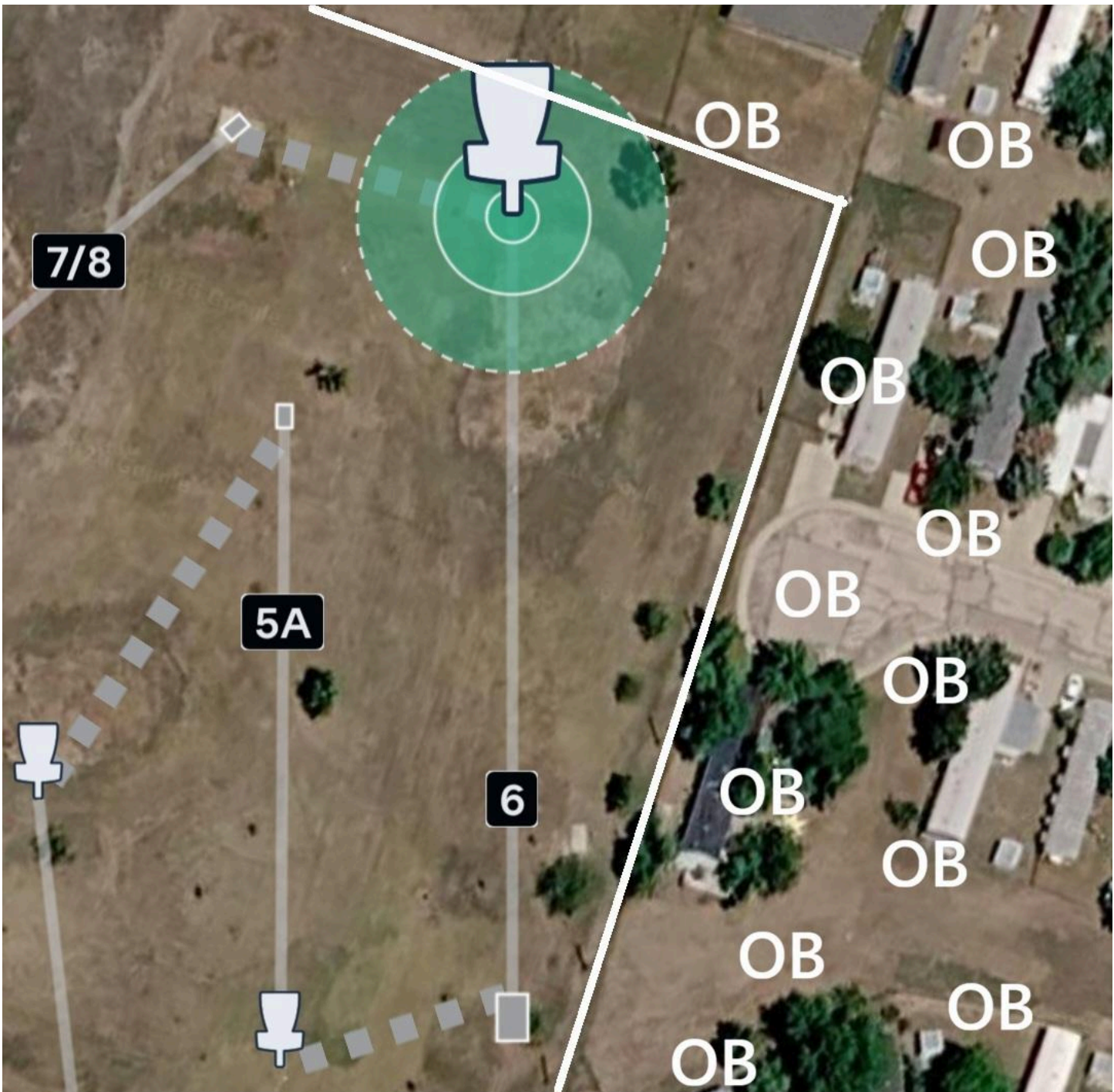
**Par 3**



**Hole 5A**

270 ft

**Par 3**



**Hole 6**

328 ft

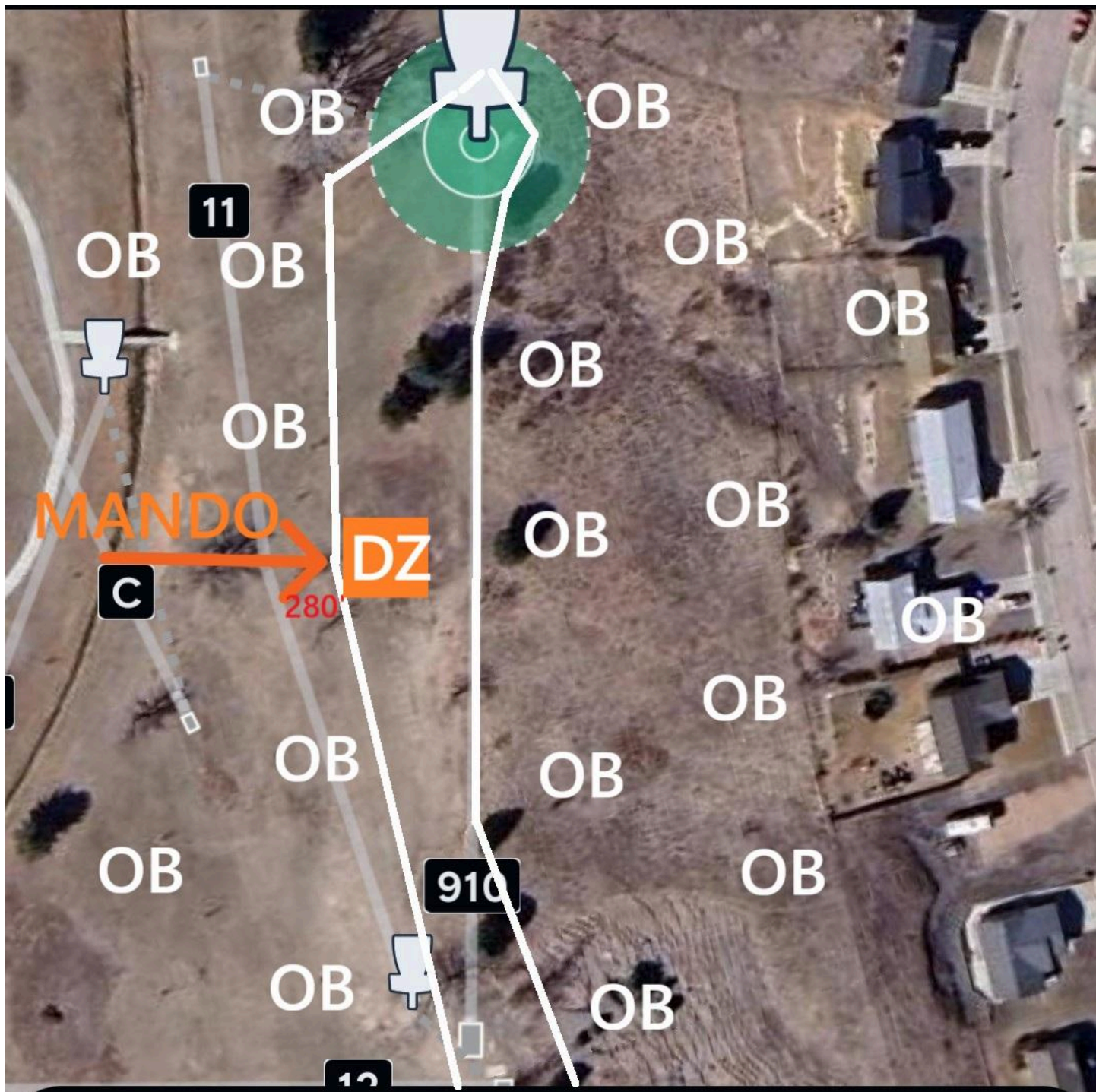
**Par 3**



**Hole 7/8**

246 ft

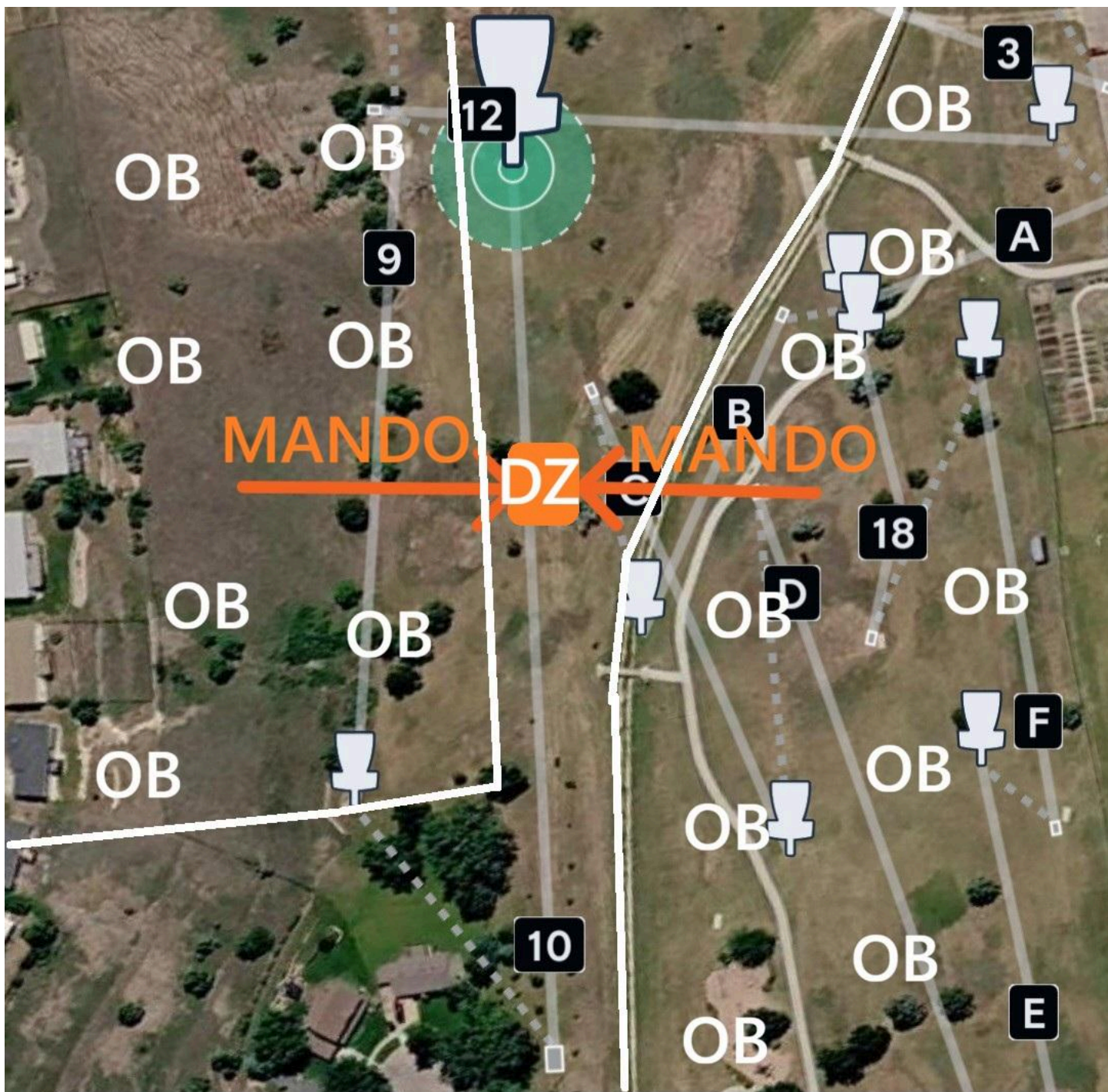
**Par 3**



**Hole 910**

**Par 4**

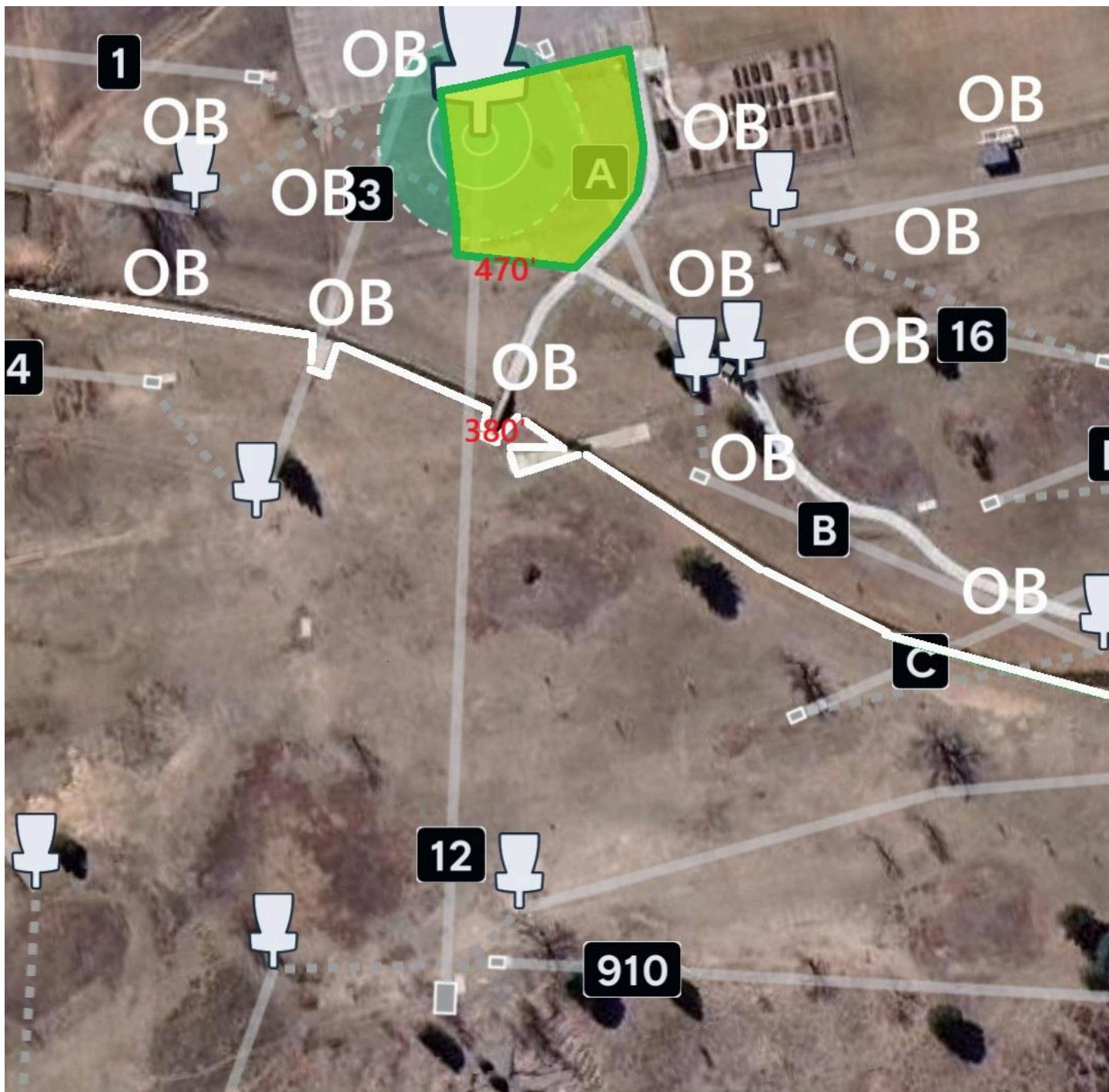
528 ft



**Hole 10**

712 ft

**Par 4**



**Hole 12**

543 ft

**Par 4**