

2026 SOUTHWEST SHOOTOUT COLLEGIATE QUALIFIER

-CADDY BOOK-



GENERAL RULES

PAR 64

- 2 METER RULE IS NOT IN PLAY
- THROUGHOUT THE COURSE THERE ARE THORNY PLANTS, SUCH AS CACTI. YOU MAY TAKE RELIEF BACKWARDS IN LINE OF THE BASKET UNTIL YOUR CARD DETERMINES YOU CAN SAFELY THROW.
- IF YOU HAVE ANY QUESTION REGARDING A LIE ABOUT OB PLEASE REFER TO THIS CADDY BOOK, NOTIFY THE TD AFTER YOUR ROUND, OR CALL 651-376-9160.



HOLE 1 - PAR 3, 270FT

- IF YOUR SHOT DOES NOT COME TO REST IN BOUNDS PROCEED TO THE DROP ZONE WITH A PENALTY STROKE.
- SIDEWALK DEEP AND PLANTER BOX LEFT PLAY AS OB.



-SOUTHWEST SHOOTOUT-



HOLE 2 - PAR 4, 650FT/550FT

- IF YOU TEE SHOT DOES NOT CROSS IN BOUNDS PROCEED TO DZ WITH PENALTY STROKE.
- MANDO LEFT OF FIRST ELECTRICAL POLE. IF MISSED PROCEED TO DZ.
- THE ONLY IN BOUNDS WILL BE THE GRASS FIELD SURROUNDED BY THE TRACK AND OB DEEP MARKED WITH FLAGS.

WOMEN WILL BE TEEING OFF FROM THE DZ.



-SOUTHWEST SHOOTOUT-



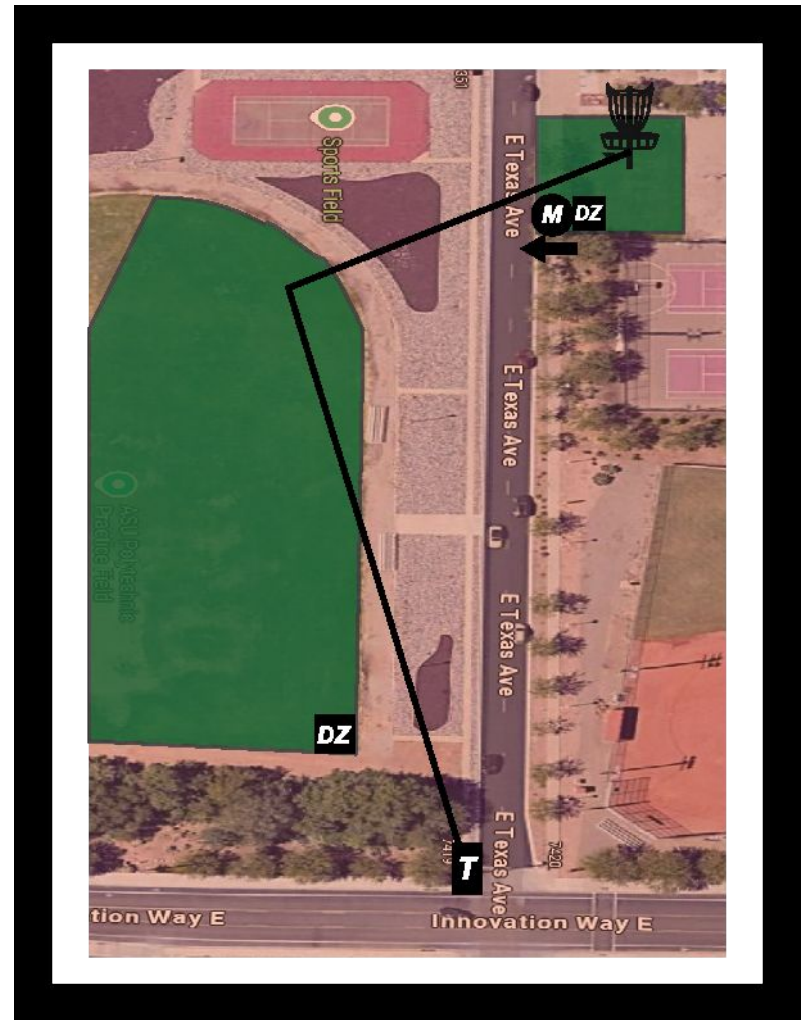
HOLE 3 - PAR 4, 650FT/500FT

- IF YOU TEE SHOT DOES NOT CROSS IN BOUNDS PROCEED TO DZ1 WITH PENALTY STROKE.
- THE ONLY IN BOUNDS WILL BE THE GRASS FIELD SURROUNDED BY THE TRACK AND SECOND LANDING ZONE GRAVEL AND DIRT
- IF YOU MISS THE MANDO LEFT OF LIGHT POLE PROCEED TO DZ2 WITH PENALTY STROKE.

WOMEN WILL BE TEEING OFF FROM DZ1.



SOUTHWEST SHOOTOUT



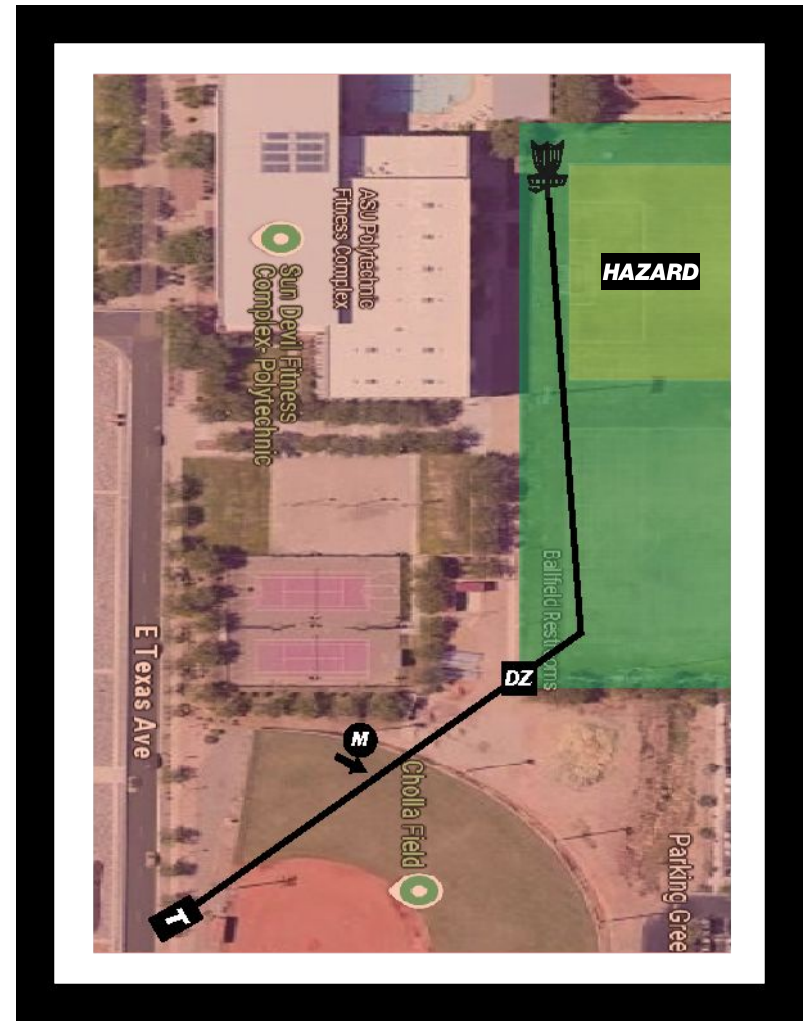
HOLE 5 - PAR 4, 830FT/500FT

- MANDO RIGHT OF MARKED POLE.
- IF YOU DO NOT CROSS IN BOUNDS OR MISS MANDO, PROCEED TO DZ WITH PENALTY STROKE.
- SECOND SOCCER FIELD WILL PLAY AS HAZARD. IF YOU LAND IN THE SECOND SOCCER FIELD PLAY LIE WITH PENALTY STROKE.

WOMEN WILL BE TEEING OFF FROM DZ.



-SOUTHWEST SHOOTOUT-

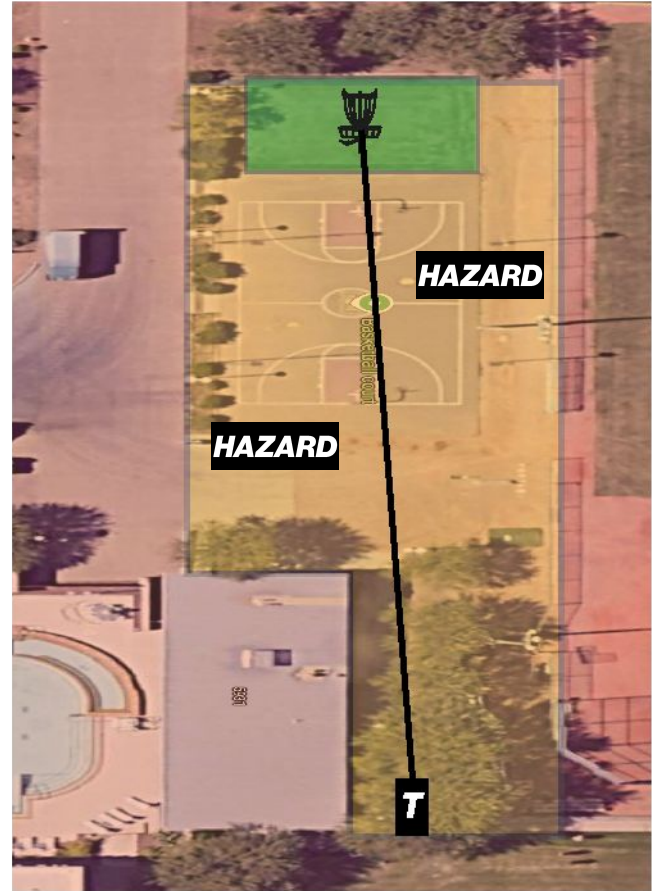


HOLE 6 - PAR 3, 290FT

- YOU ARE TEEING OFF FROM HAZARD, WITH OB BEING LEFT, DEEP, AND THE BASEBALL FIELD RIGHT
- GRASS SURROUNDING BASKET IS ONLY AREA IN BOUNDS.
- IF IN HAZARD, PLAY FROM LIE WITH PENALTY STROKE.
- IF OB, TAKE LIE FROM WHERE LAST IN BOUNDS WITH PENALTY STROKE.



-SOUTHWEST SHOOTOUT-



HOLE 7 - PAR 3, 250FT

- DOUBLE MANDO BETWEEN MARKED TREES, IF MISSED PROCEED TO DZ WITH PENALTY STROKE.
- ROAD AND CURB IN FAIRWAY IS OB
- PATH LEFT AND BEHIND BASKET OR BEYOND ARE OB



-SOUTHWEST SHOOTOUT-

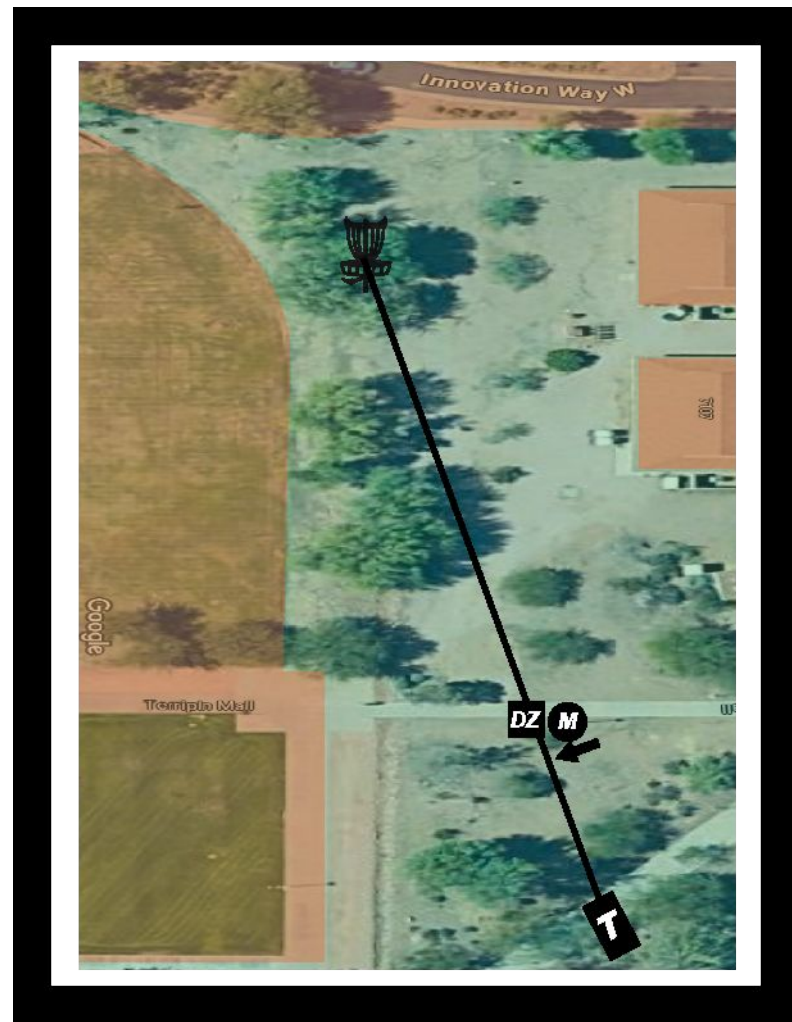


HOLE 8 - PAR 3, 370FT/300FT

- OB INCLUDES LEFT GRASS+SIDEWALK, CURB, SIDEWALK/ROAD DEEP, AND BUILDINGS RIGHT.
- MANDO LEFT OF MARKED POLE. IF MISSED PROCEED TO DZ WITH PENALTY STROKE.
- **WOMEN WILL BE TEEING OFF FROM DZ.**



-SOUTHWEST SHOOTOUT-

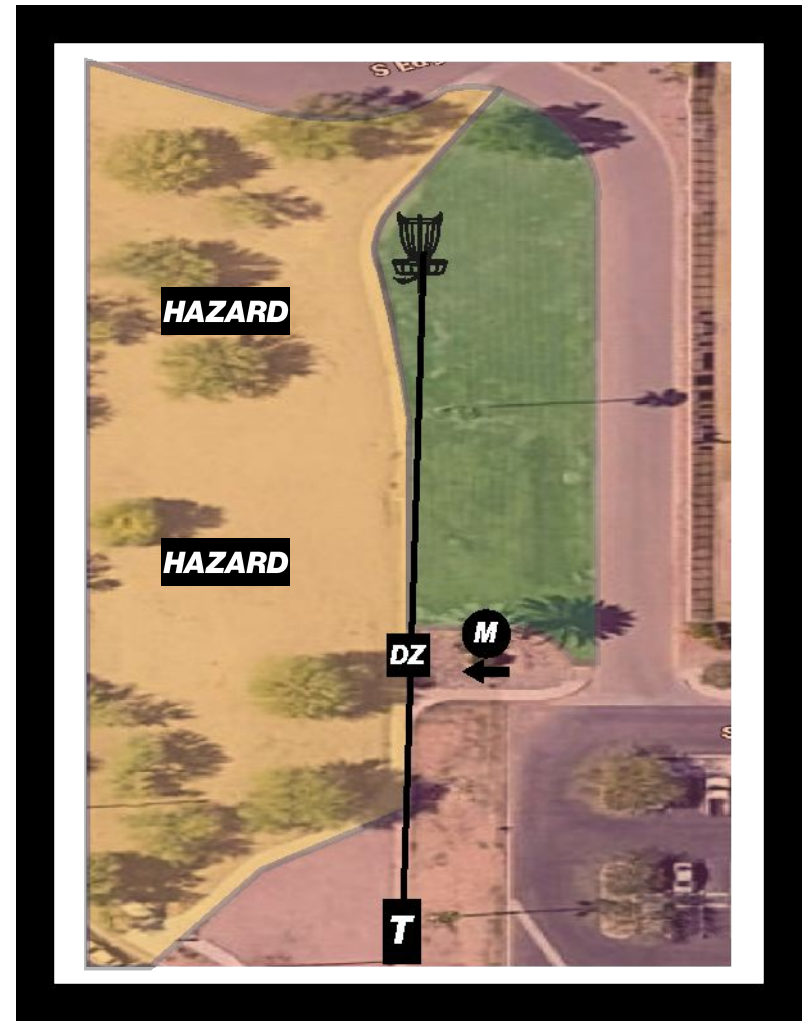


HOLE 9 - PAR 3, 330FT

- MANDO LEFT OF PALM TREE. IF MISSED PROCEED TO DZ WITH PENALTY STROKE.
- ROCKS AND SIDEWALK LEFT PLAY AS HAZARD.
- OB INCLUDES ROAD DEEP/RIGHT, AND ROCKS/SIDEWALK SHORT.



-SOUTHWEST SHOOTOUT-



HOLE 10 - PAR 5, 1100FT/800FT

- SIDEWALK IN THE MIDDLE OF THE FAIRWAY AND GRASS ISLAND SURROUNDING BASKET IS SAFE,.
- SIDEWALK SURROUNDING FAIRWAY IS OB.
- DIRT CIRCLE SURROUNDING GRASS ISLAND PLAYS AS HAZARD.
- MUST LAND IN BOUNDS OR HAZARD TO ADVANCE.
- PLAYGROUND AND PAVILION ARE OB, IF IN EITHER PLAY FROM WHERE LAST IN BOUNDS WITH PENALTY STROKE.

WOMEN WILL BE TEEING OFF FROM SHORT TEE PAD.



-SOUTHWEST SHOOTOUT-

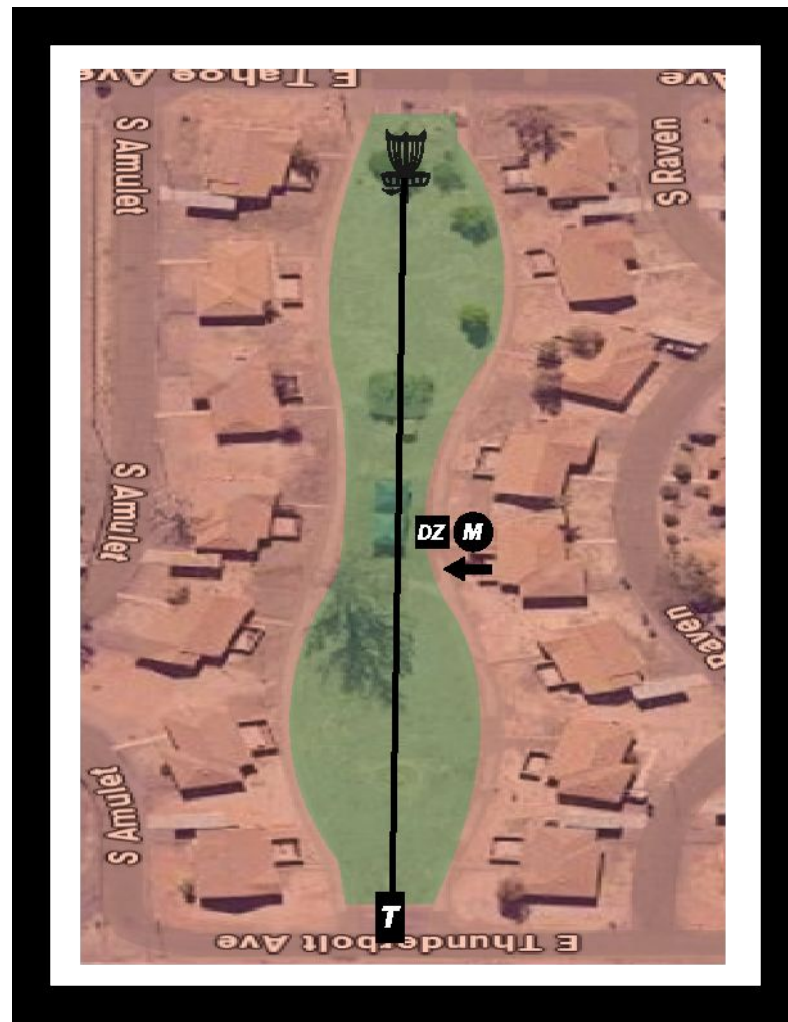


HOLE 11 - PAR 4, 630FT

- MANDO LEFT OF PALM TREE, IF MISSED PROCEED TO DZ WITH PENALTY STROKE.
- SIDEWALK IN MIDDLE OF FAIRWAY IS SAFE.
- SIDEWALK BORDERING FAIRWAY IS OB.



-SOUTHWEST SHOOTOUT-

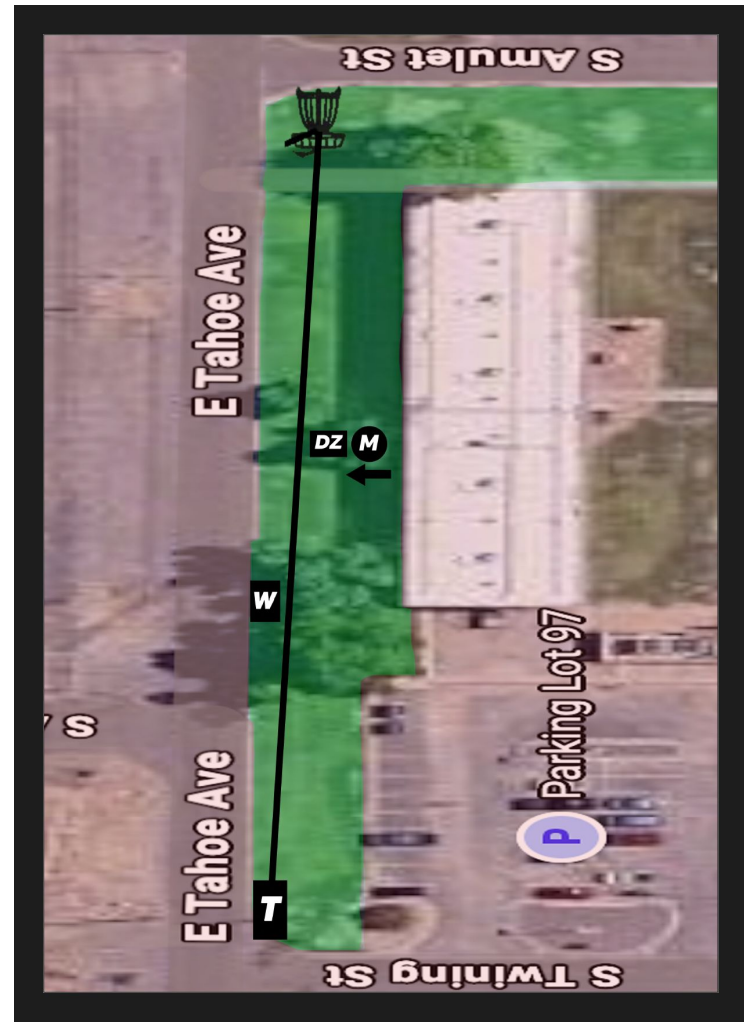


HOLE 12 - PAR 3, 380FT/250FT

- SIDE IN MIDDLE OF FAIRWAY IS SAFE.
- MANDO LEFT OF MARKED TREE, IF MISSED PROCEED TO DZ WITH PENALTY STROKE.
- ROAD LEFT, DEEP AND BUILDING RIGHT OB.
- WOMEN WILL BE TEEING OFF FROM SHORT TEE PAD.



-SOUTHWEST SHOOTOUT-

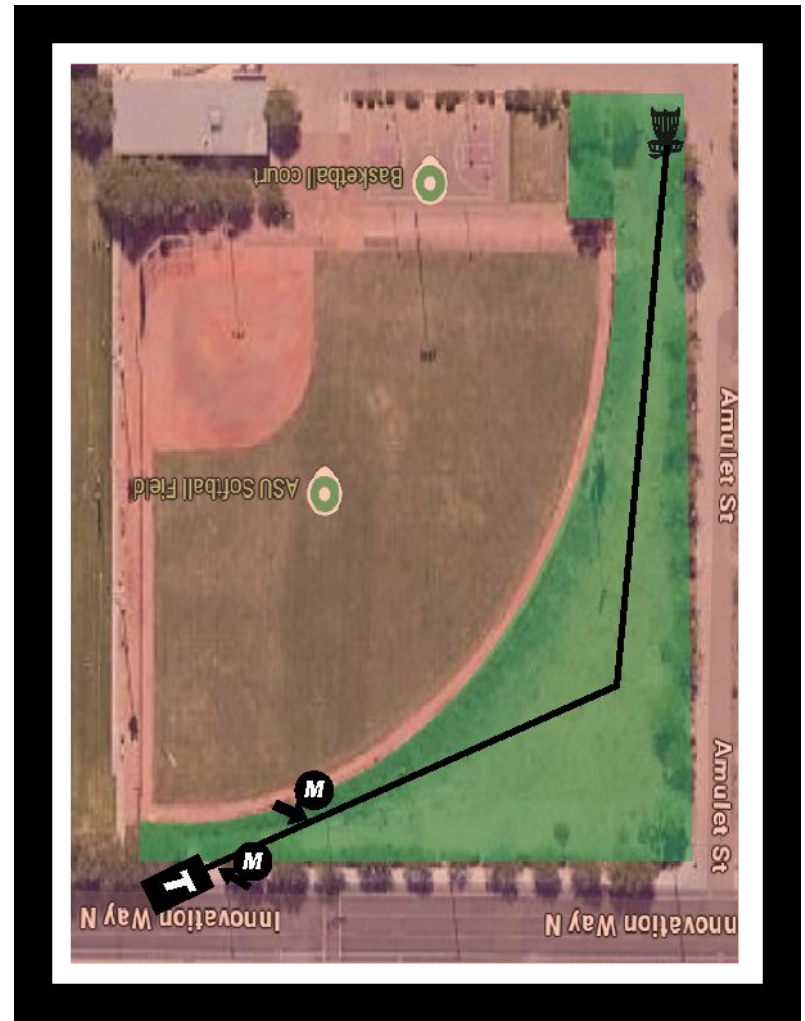


HOLE 13 - PAR 4, 620FT

- MANDO LEFT OF FIRST TREE, MANDO RIGHT OF FIRST LIGHT POLE. IF EITHER MISSED, RETEE WITH PENALTY STROKE.
- BASEBALL FIELD, AND SIDEWALK RUNNING ALONG THE FAIRWAY PLAY AS OB.



-SOUTHWEST SHOOTOUT-

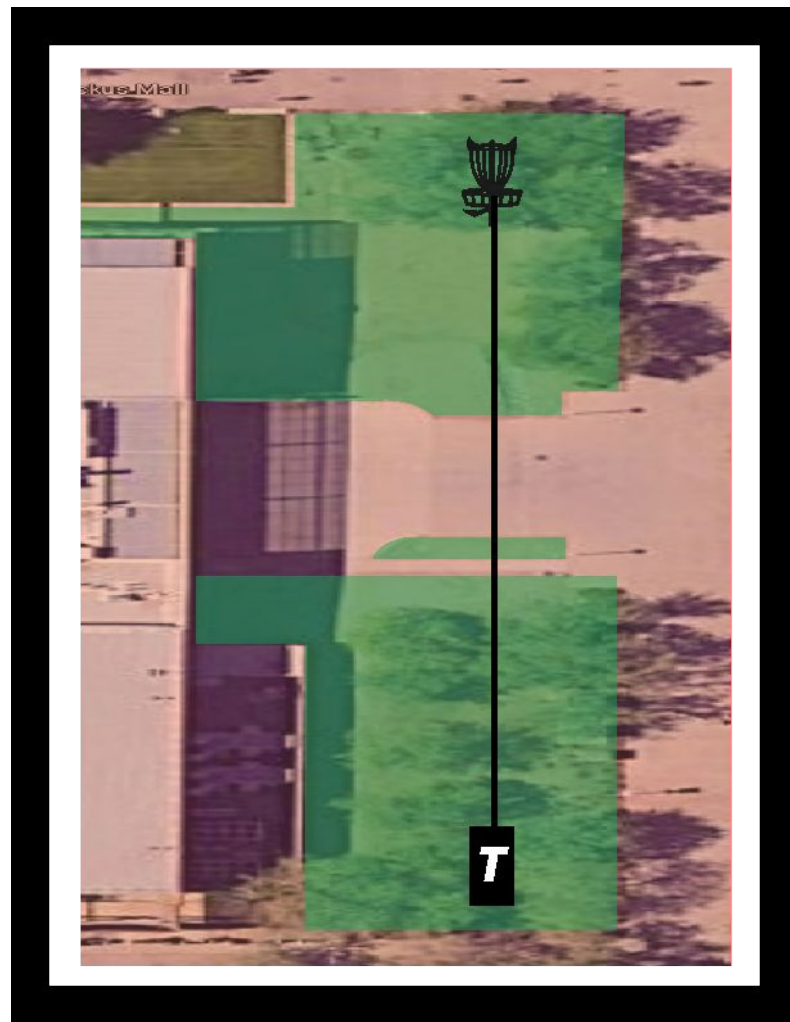


HOLE 14 - PAR 3, 305FT

- ANY SIDEWALK/CURBS OR GRASS PLAYS AS OB.



-SOUTHWEST SHOOTOUT-



HOLE 15 - PAR 4, 640FT

- ROAD/SIDEWALK RIGHT, IS OB. MARKED BUILDINGS ON THE LEFT ARE OB.
- SIDEWALK BY SECOND SET OF MANDOS PLAYS AS A RIVER/OB
- MUST MAKE BOTH SETS OF DOUBLE MANDOS MARKED ON THE POLES. IF MISS FIRST POLES, RE-TEE. IF MISS SECOND POLES, GO TO DZ.



-SOUTHWEST SHOOTOUT-

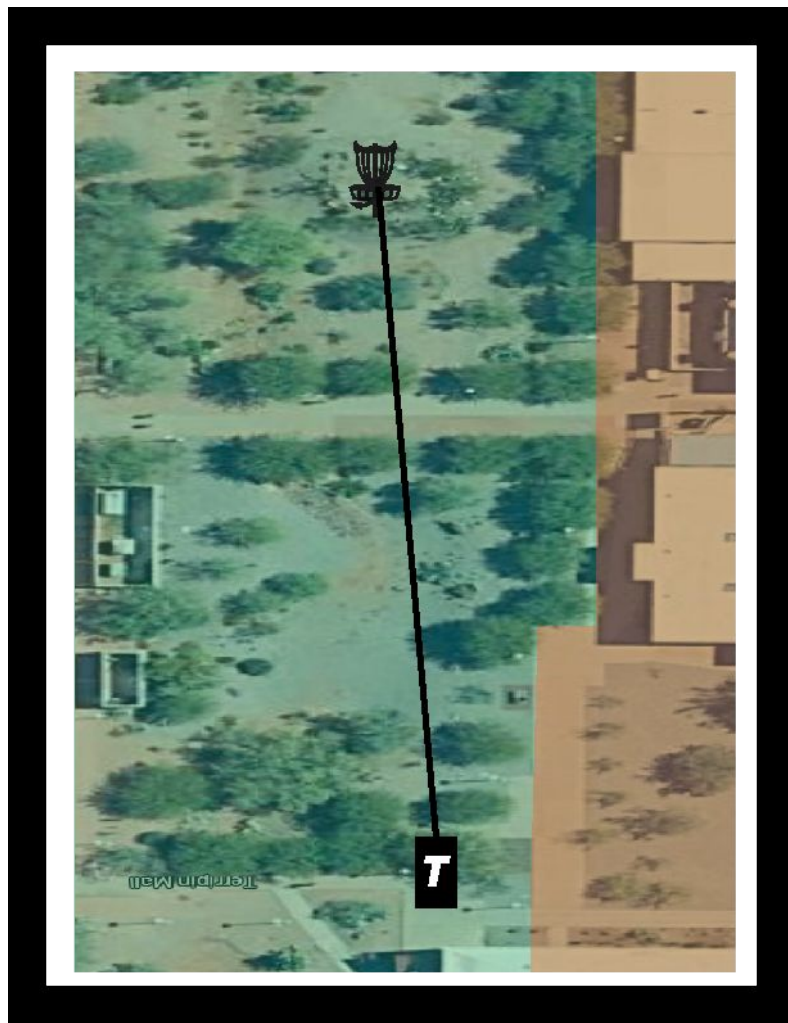


HOLE 16 - PAR 3, 320FT

- SIDEWALK AND BUILDINGS RIGHT ARE OB.
- SIDEWALK IN THE MIDDLE OF THE FAIRWAY IS SAFE.
- PLEASE HAVE HEAVY EMPHASIS ON TAKING SAFETY RELIEF ON YOUR PUTTS.



-SOUTHWEST SHOOTOUT-

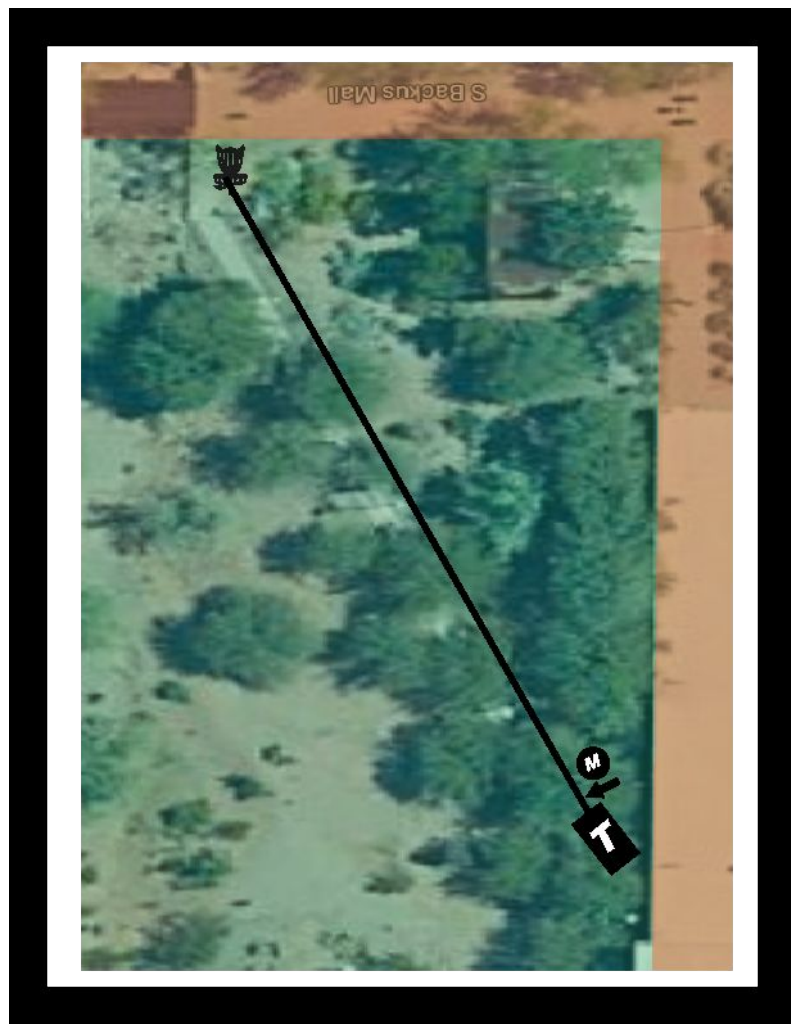


HOLE 17 - PAR 3, 210FT

- MANDO LEFT OF FIRST LIGHT POLE NEXT TO TEEPAD. IF MISSED RETEE WITH PENALTY STROKE.
- OB SIDEWALK DIRECTLY BEHIND BASKET ON FAR RIGHT.



-SOUTHWEST SHOOTOUT-



HOLE 18 - PAR 5, 710FT/410FT

- MANDO RIGHT OF FIRST PALM TREE, MANDO LEFT OF SECOND PALM TREE. TRIPLE MANDO THROUGH FRONT OF CANOPY. IF ANY MANDO MISSED, MOVE TO RESPECTIVE DROP ZONE WITH PENALTY STROKE.
- PARKING LOT RIGHT IS OB. LATE SIDEWALK/PLANTER AREA PLAYS AS OB RIVER.
- WOMEN WILL BE TEEING OFF FROM THE SHORT TEE.



-SOUTHWEST SHOOTOUT-

