

Eddison Park
Sun 26 October
Caddie book

WELCOME TO SPRING SLING 2025!

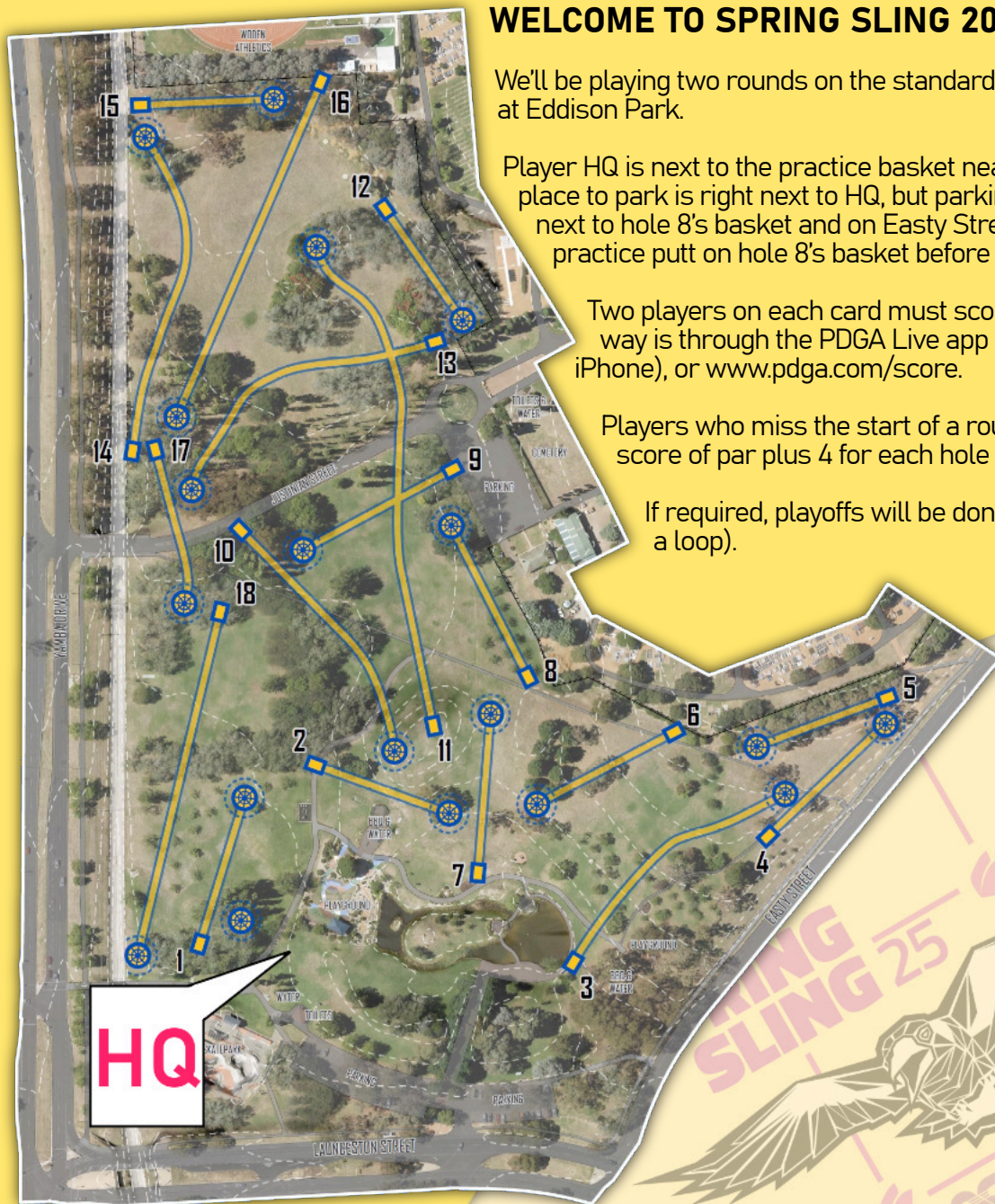
We'll be playing two rounds on the standard 18 hole Blue layout at Eddison Park.

Player HQ is next to the practice basket near hole 1. The best place to park is right next to HQ, but parking is also available next to hole 8's basket and on Easty Street. Please do not practice putt on hole 8's basket before round 1.

Two players on each card must score. The preferred way is through the PDGA Live app (Android or iPhone), or www.pdga.com/score.

Players who miss the start of a round will receive a score of par plus 4 for each hole they are absent.

If required, playoffs will be done on holes 18/1 (on a loop).



SUPPORT THOSE WHO SUPPORT AUSSIE DISC GOLF!

We're proud to have the support of the following local and Australian businesses for Spring Sling 2025

H Y Z E R F L I G H T



Escape rooms, smash rooms,
axe throwing and splatter paint studio!

playhem.com.au



Landscaping & Excavation
Residential or Contract work
contact@tgaprojects.com.au
0477 844 528



www.jindydiscgolfshop.com



SPONSORED BY

Obi Shadmaan
Estate Agent
0423 980 763


THE
PROPERTY
COLLECTIVE





PUBLIC SAFETY AT EDDISON PARK

Eddison Park is a very popular public park, with BBQs, picnic areas and walking/cycling paths. While we aren't expecting any issues with members of the public occupying our playing area, they have right of way if they are passing through the area. If there's a chance you'll hit someone, don't throw. If you can't see where you are trying to land, get a cardmate to spot for you.

If you encounter a group of people who are occupying our playing area (not passing through), please let the TD know.



TOURNAMENT INFO

Out of bounds (OB)

Bollards: Many holes on the course are adjacent to roadways that have wooden bollards separating the road from the hole fairways. These bollards mark the OB line. The line can be denoted by connecting the inside edge of each bollard (inside edge is the edge closest to the playable area). If a tree is planted on the line of bollards, the tree is considered the same as a bollard.

Stormwater drain: The stormwater drain on the edge of holes 14 and 18 is OB, denoted by the top of the drain edge. Be extremely careful entering the drain, especially if water is flowing.

Water: All water is OB. If heavy rain creates pools of water on the fairway, casual relief can be taken back on the line of play to the first available playable location without penalty.

If in doubt after discussing with your cardmates (remember the benefit of the doubt goes to the player), take a picture, play it both ways, and see the TD after the round for a final decision.

Mandos

Missed mandos may result in a drop zone throw (with penalty) or a rethrow (with penalty). Refer to tee signs/caddie book to see if a drop zone applies.

Giving way

Where two groups are occupying the same area (e.g. holes 9/11, 11/13), players on the lower-numbered hole give way to players on the higher-numbered hole.

Lost discs

Please pay attention and spot your group's shots as there are many holes on the course where a disc can be easily lost. Discs can be searched for up three minutes (use a timer).

If considered lost, a player must rethrow from their previous lie with a one stroke penalty.

If a throw is considered likely lost after the throw, the player/group may consider to play a provisional throw to increase speed of play (and still search for the first disc). If lost, play from the provisional throw's lie. If not lost, disregard the provisional throw.

SCHEDULE

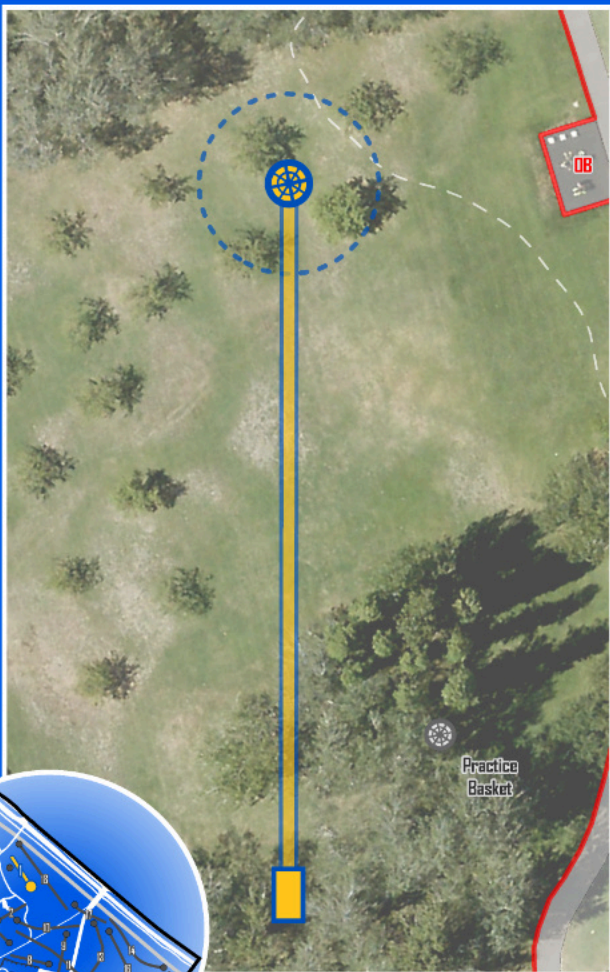
8:30 AM	Player check-in
9:00 AM	Mandatory players meeting
9:30 AM	Round 1 starts
Post R1	Lunch (BYO)
1:15 PM	Mandatory players meeting
1:30 PM	Round 2 starts

Presentations will be done at HQ after all cards have finished their second round.

Round 2 start time may be brought forward if there are adverse weather conditions.

EDDISON PARK

DISC GOLF COURSE



Par 3

77m

H Y Z E R F L I G H T



EDDISON PARK

DISC GOLF COURSE



2

Par 3

71m

JOS



EDDISON PARK

DISC GOLF COURSE



3

Par 4

142m

H Y Z E R F L I G H T



EDDISON PARK

DISC GOLF COURSE



4

Par 3

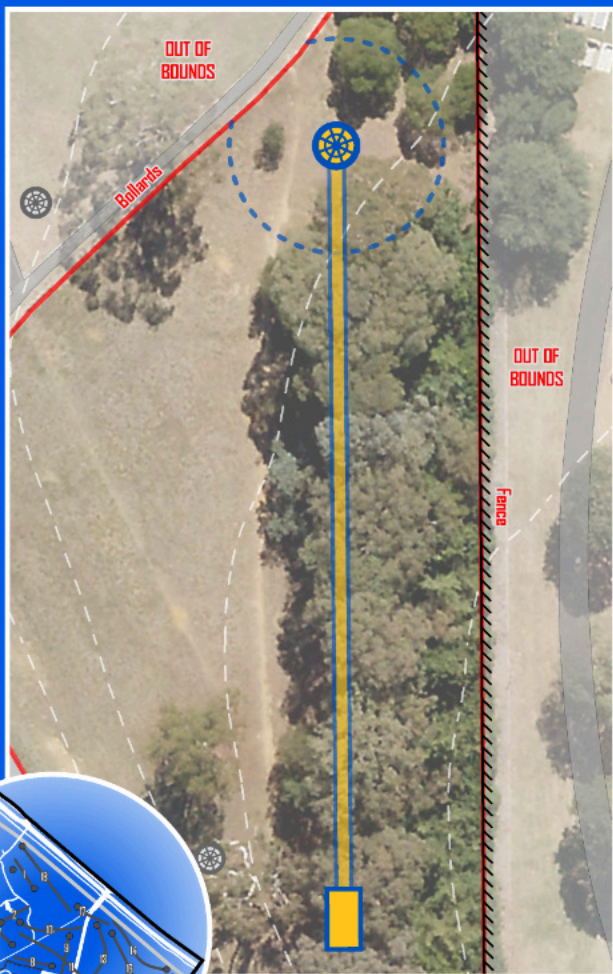
81m

TGA

PROJECTS

EDDISON PARK

DISC GOLF COURSE



5

Par 3

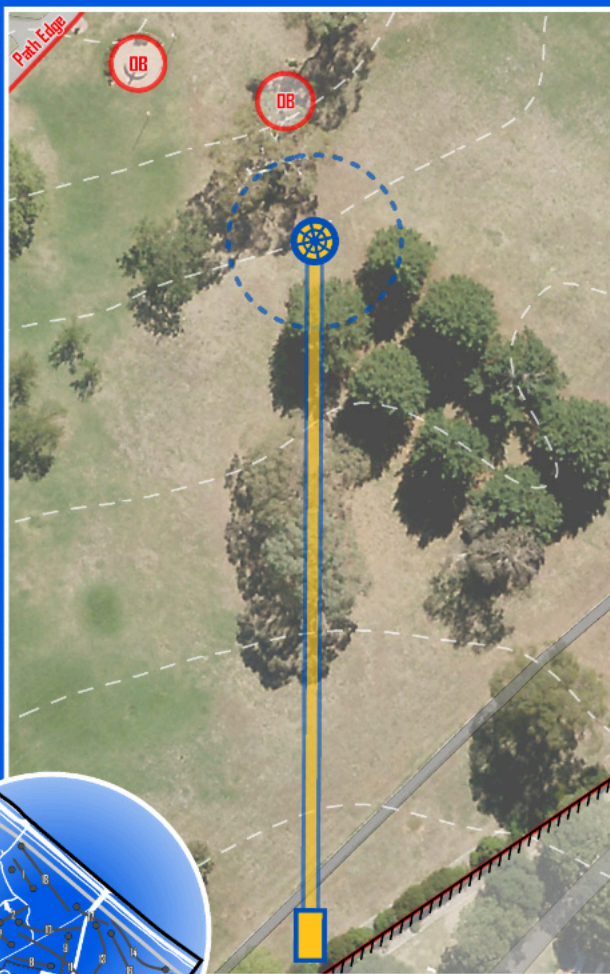
70m

AXXE

& BREAKR

EDDISON PARK

DISC GOLF COURSE



6

Par 3

78m



SPONSORED BY

Obi Shadmaan
Estate Agent
0423 980 763



THE
PROPERTY
COLLECTIVE

EDDISON PARK

DISC GOLF COURSE



7

Par 3

80m

TGA

PROJECTS



EDDISON PARK

DISC GOLF COURSE



8

Par 3

85m

BREAKR

EDDISON PARK

DISC GOLF COURSE



9

Par 3

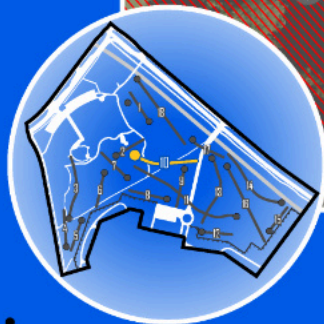
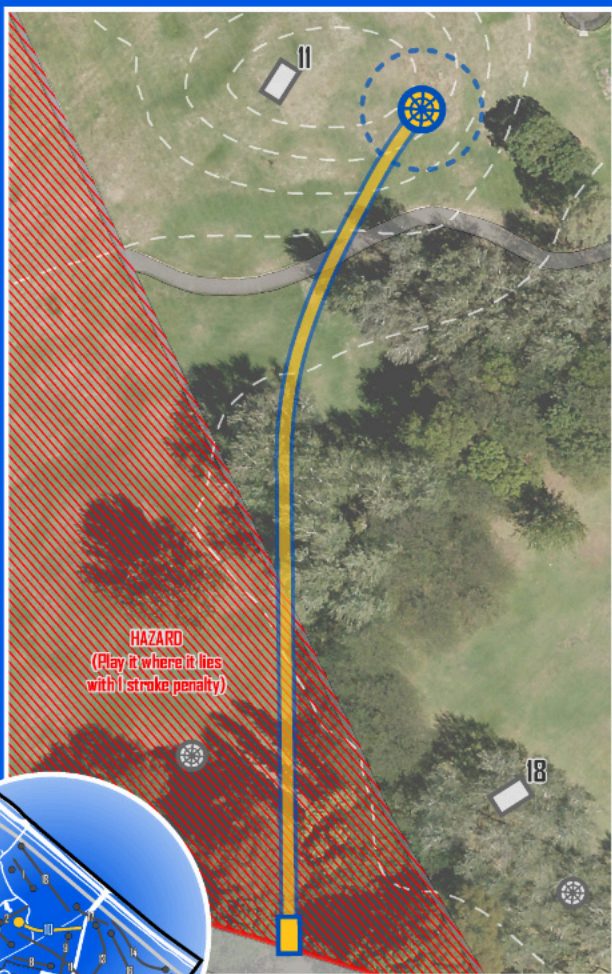
85m

H Y Z E R F L I G H T



EDDISON PARK

DISC GOLF COURSE



10

Par 4

140m

**RIDDLE
ROOM**
CANBERRA

EDDISON PARK

DISC GOLF COURSE



Par 5

261m

H Y Z E R F L I G H T



EDDISON PARK

DISC GOLF COURSE



12

Par 3

68m



TGA

PROJECTS

EDDISON PARK

DISC GOLF COURSE



13

Par 4

158m



SPONSORED BY
Obi Shadmaan
Estate Agent
0423 980 763



THE
PROPERTY
COLLECTIVE

EDDISON PARK

DISC GOLF COURSE



14

Par 4

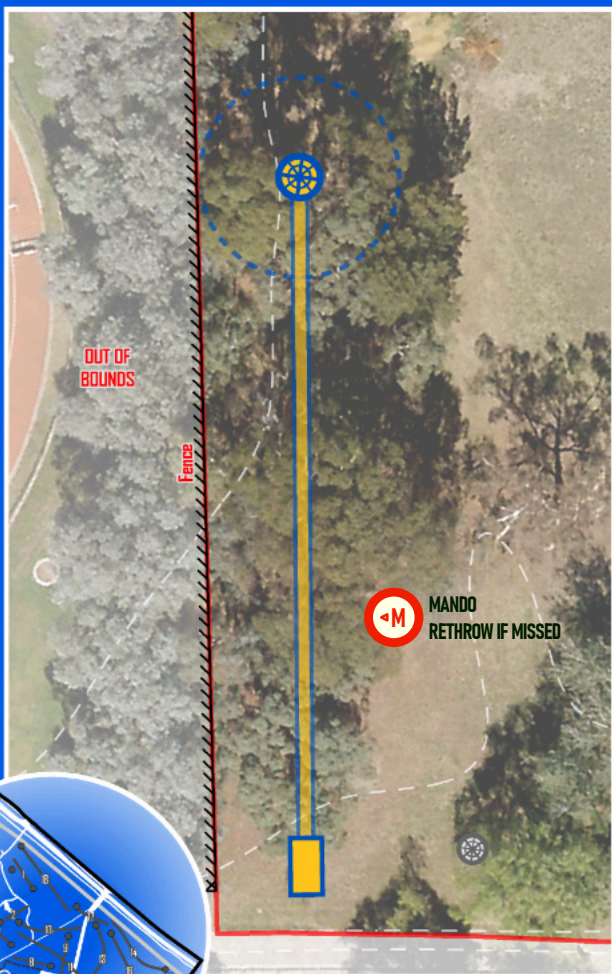
169m

H Y Z E R F L I G H T



EDDISON PARK

DISC GOLF COURSE



15

Par 3

66m

SPLASH LAB

EDDISON PARK

DISC GOLF COURSE



16

Par 4

186m

TGA

PROJECTS



EDDISON PARK

DISC GOLF COURSE



17

Par 3

79m

JOS

EDDISON PARK

DISC GOLF COURSE



18

Par 4

180m

H Y Z E R F L I G H T

