



---

# CRUSH CUB

## SUNNYSIDE SHOOTOUT

---

**PDGA Tier:** C

**Location:** Sunnyside - Logan Lake

**Date:** October 19th, 2025

### **About this tournament:**

Welcome to the fifth Crush Cub event of 2025, Crush Cub: Sunnyside Shootout! This is a 1 Day, 2 round event.

We hope you come out and join us at the Sunnyside Disc Golf Course. There is one pit bathroom on site, please be patient and give adequate time during rounds. On top of that we will have Water Jugs at the Tournament Central Table. If you did not sign up for a hot lunch there will likely be some extra, please bring cash as a donation (\$7 suggested) There will be some discs for sale as well that support disc golf in Logan Lake!

We will be doing PDGA live scoring - please download the app ahead of time but, will have paper scorecards available upon request.  
PDGA Code: **SUNNY25**

Huge thank you to the the Highland Valley Outdoor Association (Keith, Matt, Connie & Tom) for all the recent & ongoing work at the course! This course was built with over 800 volunteer hours and opened this year!

Please use the **PDGA app** (there will be hole notes on them) and ask questions if needed. Thank you.

### **CTP:**

**Hole 1 - Latitude 64 E4 Bag**

**Hole 8 - Proto & First Run Pack**

**Hole 15 - L64 Practice Bag & Knee Pad**

**Hole 18 - 2<sup>nd</sup> Shot - Trilogy disc Pack**

**Hole 11 - Women's ONLY - Signed Grace & Practice bag**

### **Pass Through Fees: \$10**

PDGA \$3 - TD \$2 - Local Club fee: \$5

AM's will be receiving a custom stamped disc as a players pack item. Payouts for Pro divisions will be 90% of gross entry. (Outside of Aceptot, CTP and Pass through Fees)

We hope you come out for some PDGA sanctioned rounds and be a part of our disc golf series that has given back to Local Disc Golf.

---



# SCHEDULE

SUNDAY OCTOBER 19TH 2025  
9:30AM - 4:30PM

PLAYERS MEETING STARTS AT 9:30AM

SHOTGUN START  
FIRST ROUND STARTS 10:00AM

SECOND ROUND STARTS 1:45PM


## WEATHER FORECAST



As of October 14th

Sun Oct 19

Day

 7° Feels 4




 Wind 21 km/h S  
 Wind Gust 32 km/h  
 Humidity 57%

 P.O.P. 30%  
 Sun 3 hrs

Night

 0° Feels -2

 Wind 12 km/h W  
 Wind Gust 18 km/h  
 Humidity 93%

 P.O.P. 60%  
 Snow ~1cm  
 Rain <1mm



---

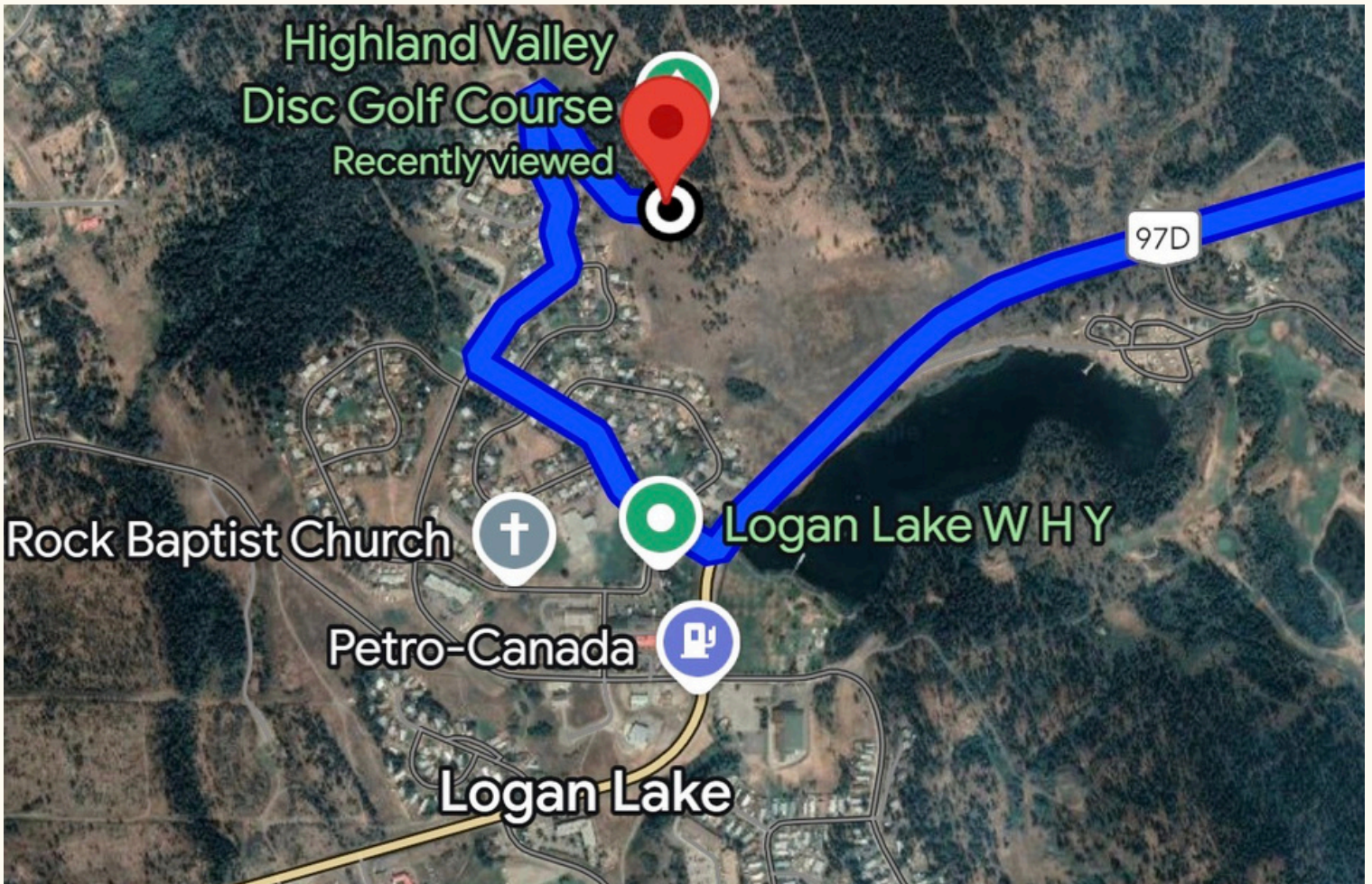
# COURSE LOCATION

## SUNNYSIDE DISC GOLF COURSE

---



3 WATERTOWER LOGAN LAKE  
(SIGNS FOR HIGHLAND VALLEY DGC)



## PARKING OPTIONS

PLEASE FOLLOW SIGNAGE FOR THE HIGHLAND VALLEY DISC GOLF COURSE  
THERE WILL BE A SHORT 1 MINUTE DIRT ROAD TO GET TO THE PARKING LOT

**PLEASE CARPOOL IF POSSIBLE, SAFE TRAVELS!**



# CRUSH CUB SUNNYSIDE SHOOTOUT



## COURSE MAP



- ### Basics Of Disc Golf
1. Players throw a disc from a tee area toward a target or "hole" in as few throws as possible.
  2. The first player to tee off on a hole is the player with the lowest score on the previous hole.
  3. If a disc lands out-of-bounds or in a hazard, the player receives a one-throw penalty and throws again from a designated drop zone or where they went out of bounds.
  4. Players should always be aware of other players and park users on the course and yield to them as necessary.
  5. If you have any questions please reach out to the Highland Valley Outdoor Association!

**PLAY SAFE - HAVE FUN!**



# LAYOUTS



## CRUSH CUB: SUNNYSIDE SHOOTOUT 2025 - MA3, FA2&3, FA40, MA60) "RED LAYOUT"

Hole	Par	Length (Feet)	Tee	Target	Hole Notes ?
1	3	237	Red		
2	3	235	Red		Double Mandatory
3	3	225	Red		OB Long
4	3	205	Red		OB Left
5	3	181	Red		OB Left
6	3	214	Red		Hazard Island
7	4	394	Red		OB Left side closer to basket
8	3	258	Red		
9	4	361	Red		OB Fence Right, x1 Mandatory
10	5	617	Red		OB Right Side, x1 Mandatory
11	3	220	Red		
12	3	228	Red		
13	3	286	Red		NO Hazard Island & Barbwire Long = OB
14	4	476	Red		Double Mandatory, OB Long & Barbwire fence on right
15	3	208	Red		
16	3	164	Red		
17	4	476	Red		OB surrounds green and cuts across field
18	4	319	Red		x1 Mandatory, DZ is Red Pad. OB Barbwire Fence Left

### PLAYOFF HOLES

HOLES 10&17 - AGGREGATE ON REPEAT



# LAYOUTS



## CRUSH CUB: SUNNYSIDE 2025 - MA2,MA40,MA50,FPO, FA1 "PURPLE LAYOUT"

Hole	Par	Length (Feet)	Tee	Target	Hole Notes ?
1	3	237	Red		
2	3	235	Red		Double Mandatory
3	3	294	White		OB Long
4	3	255	White		OB Left
5	3	181	Red		OB Left
6	3	260	White		Hazard Island
7	4	394	Red		OB Left side closer to basket
8	3	330	White		
9	4	361	Red		OB Fence Right, x1 Mandatory
10	5	689	White		OB Right Side, x1 Mandatory
11	3	268	White		
12	3	228	Red		
13	3	286	Red		Hazard Island, Barbwire Long = OB
14	4	550	White		Double Mandatory, OB Long & Barbwire fence on right
15	3	232	White		
16	3	164	Red		
17	5	596	White		OB surrounds green and cuts across field
18	4	428	White		x1 Mandatory, DZ is Red Pad. OB Barbwire Fence Left

### PLAYOFF HOLES

HOLES 10&17 - AGGREGATE ON REPEAT



# LAYOUTS

## CRUSH CUB: SUNNYSIDE SHOOTOUT 2025 - MPO,MP40,MA1 "WHITE LAYOUT"

Hole	Par	Length (Meters)	Tee	Target	Hole Notes ?
1	3	289	White		
2	3	283	White		Double Mandatory
3	3	294	White		OB Long
4	3	255	White		OB Left
5	3	240	White		OB Left
6	3	260	White		Hazard Island
7	4	567	White		OB Left side closer to basket
8	3	330	White		
9	4	454	White		OB Fence Right, x1 Mandatory
10	5	689	White		OB Right Side, x1 Mandatory
11	3	268	White		
12	3	287	White		
13	3	357	White		Hazard Island, Barbwire Long = OB
14	4	550	White		Double Mandatory, OB Long & Barbwire fence on right
15	3	232	White		
16	3	190	White		
17	4	596	White		OB surrounds green and cuts across field
18	4	428	White		x1 Mandatory, DZ is Red Pad. OB Barbwire Fence Left

### PLAYOFF HOLES

HOLES 10&17 - AGGREGATE ON REPEAT



---

◆ ◆ ◆

# CRUSH CUB HIDDEN ANTLER CUP

◆ ◆ ◆

---



## **OUT of BOUNDS**

Marked with stakes or fenceline, the front of the stake or fence, facing into the fairway, is always the OB line.

Proceed with OB rules

Any Out of Bounds line that finishes goes in an infinity line from the last two stakes

## **Hazard**

Marked by flags. If you land in the hazard take a penalty stroke and play from where it lies.

## **MANDATORIES**

The course has Mandos & Restricted Areas. Please know the rules of play for both.

<https://www.pdga.com/news/pdga-official-rules-disc-golf-competition-manual-updated-2022>

All of the Mandos have a drop zone.

NEVER unwind from a Mando! This is not allowed!

## **PLAYOFF HOLES.**

In the case of a playoff for 1st, there will be an aggregate playoff. With no winner yet, moving to sudden death.

Aggregate Play holes: 10&17

Sudden Death to follow on the same holes 10&17.



---

◆ ◆ ◆

# SPONSORS

◆ ◆ ◆

---



**THANK  
YOU!**



# ABOUT CRUSH CUB



## TDS (L-R):

Brett Hanna, Zach Bernier, Troy Sargeant

## Why We Do it?

This all started out due to the lack of the events in our area and a whole lot of passion. One event rolled into the next one... and the next one. Then we started planning events a year in advance.

We've had our stumbling moments, learnings, and more. Finding our brand Crush Cub didn't happen right away and we are still growing! We are always happy to share successes and struggles with anyone who is keen.

## Funds Raised:

We continue to find ways beyond green fees to fundraise for local clubs, courses and initiatives. To date we have over 30k fundraised for disc golf in the community. Thank you to everyone who's attended events, donated and helped out along the way.

## What's next:

**We will be back for 2026!**

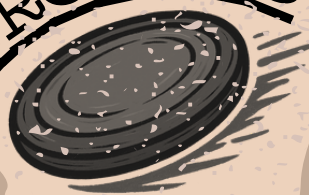
Thank you for all the support and we welcome feedback always. Hope its a great event!



# SUNNYSIDE SHOOTOUT



OCT 19  
2 ROUNDS



PDGA  
C TIER



# SAFE TRAVELS!

LATITUDE 64°