

Level Up, Vol. 3 @ LaCroix Links

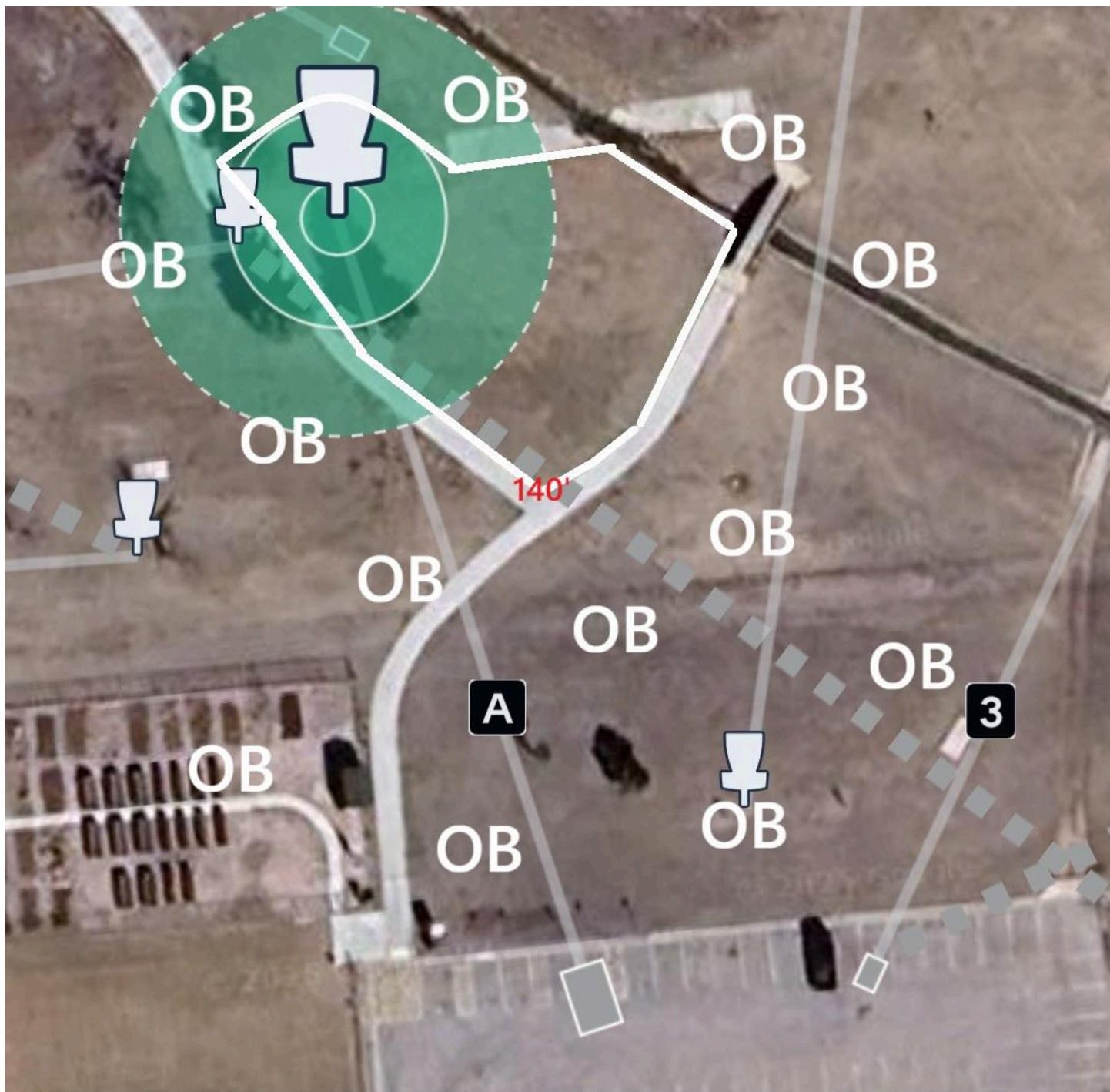
Sunday, September 21, 2025

Flex Start, PDGA C-Tier



Hole	Tee pad	Basket	Distance	Par	Notes
A	Temp A	Basket 18 deep	237'	3	ISLAND HOLE The island is formed by the sidewalks, concrete drainage ditch, and OB line connecting them. The sidewalk and drainage ditch are OB. This hole plays as a traditional OB. If you do not establish in bounds, retee with a one stroke penalty. Do not throw if players are on tee pad B.
B	Temp B	Basket 16	279'	3	OB sidewalk and beyond left. OB concrete drainage ditch and beyond right. OB bridge and beyond. Be aware of players on Hole C.
C	Tee 11 back	Basket 15	406'	3	TEE FROM OB If you do not establish in bounds, retee with a one stroke penalty. OB sidewalk and short. Be aware of players on Hole B.
D	Temp D	Basket 14	541'	4	DOUBLE MANDO between marked trees. If either mando is missed, proceed to the DZ with a one stroke penalty. OB sidewalk and beyond. OB fence and beyond.
E	Temp E	Basket 13	391'	3	OB fence and beyond. Do not throw if players are on tee pad 14.
F	Tee 14 back	Temp F	366'	3	OB fence and beyond. OB sidewalk and beyond.
18	Tee 18	Basket 18	235'	3	DOUBLE MANDO between marked trees. If either mando is missed, proceed to the DZ with a one stroke penalty. OB sidewalk and beyond.
1	Tee 1	Temp 1	494'	4	OB right of sidewalk and beyond. Sidewalk plays as OB. OB left and deep of the marked line.
2	Tee 2	Temp 2	454'	4	OB right of fence, marked line connecting fence to the concrete drainage and concrete drainage. The concrete drainage plays as OB left of marked line.
3	Temp 3	Basket 3	303'	3	RIVER ISLAND HOLE The river starts at the concrete drainage. Play as a traditional OB.
4	Tee 4	Basket 4	255'	3	OB marked line and beyond.
5	Temp 5	Basket 7	330'	3	MANDO LEFT of the marked tree. If mando is missed, proceed to DZ with a one stroke penalty.

Hole	Tee pad	Basket	Distance	Par	Notes
5A	Temp 5A	Basket 5	270'	3	OB fence and beyond.
6	Tee 6	Basket 6	257'	3	MANDO RIGHT of the marked tree. If mando is missed, proceed to the DZ with a one stroke penalty. OB fence and beyond.
7/8	Tee 7	Basket 8	246'	3	
9	Tee 9	Temp 9	528'	4	MANDO RIGHT of marked tree. If mando is missed, proceed to DZ with a one stroke penalty. OB right of tall grass/marked line and wooden retaining walls. OB deep and right of the marked line.
11	Temp 11	Basket 11	577'	4	DOUBLE MANDO between marked trees. If either mando is missed proceed to DZ with a one stroke penalty. OB left of marked line. OB right of concrete drainage. Concrete drainage plays as OB.
12	Tee 12	Practice Basket	543'	4	RIVER ISLAND HOLE . The river is formed by the concrete drainage ditch, the concrete drainage plays as OB, and the OB marked line after the creek. OB marked line and left. OB sidewalk and right. OB pavement and beyond. Plays as a traditional OB.
		Totals	6,712'	60	



Hole A

237 ft

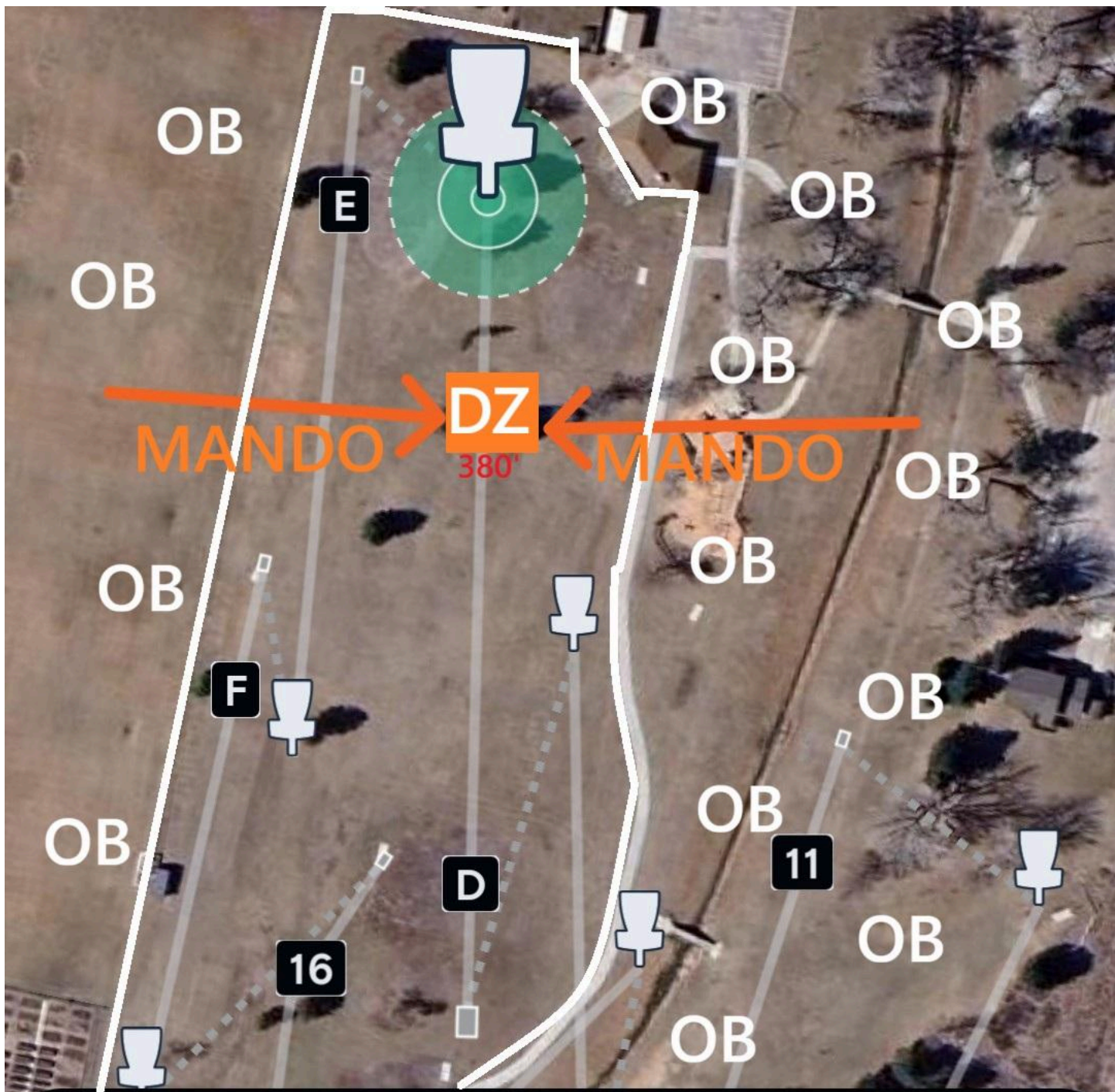
Par 3



Hole B

Par 3

279 ft



Hole D

541 ft

Par 4



Hole E

391 ft

Par 3



Hole F

366 ft

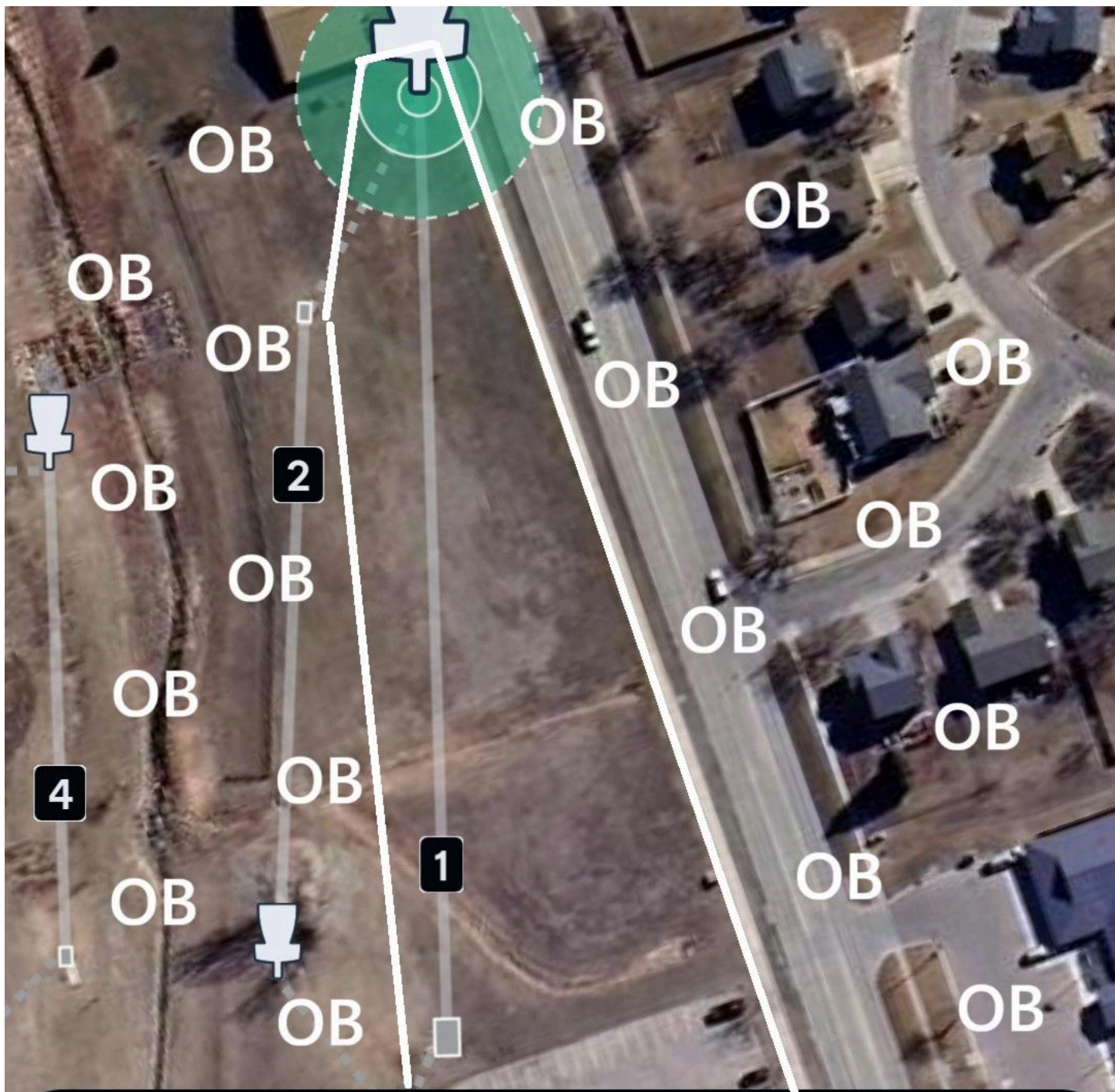
Par 3



Hole 18

235 ft

Par 3



Hole 1

494 ft

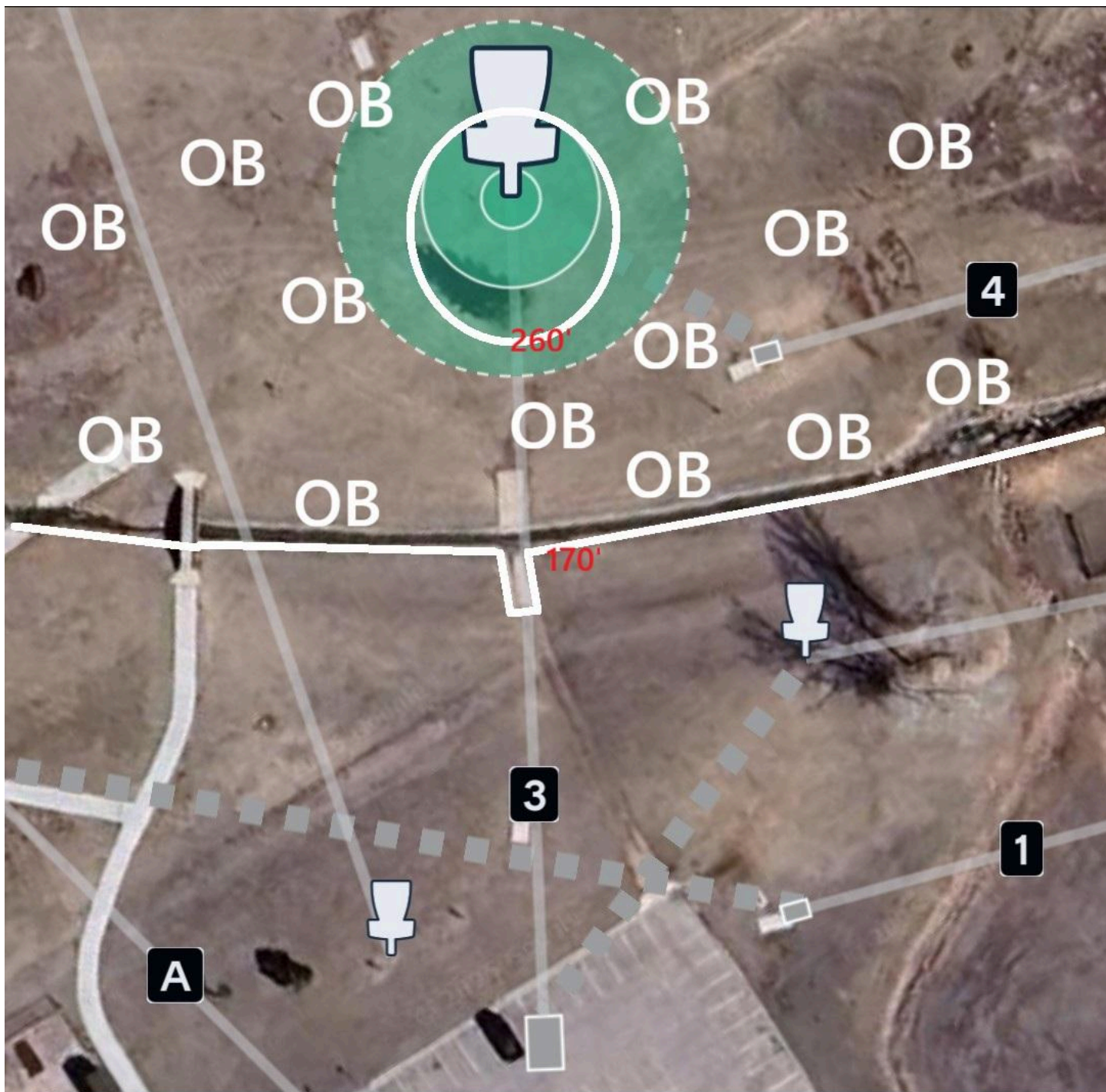
Par 4



Hole 2

454 ft

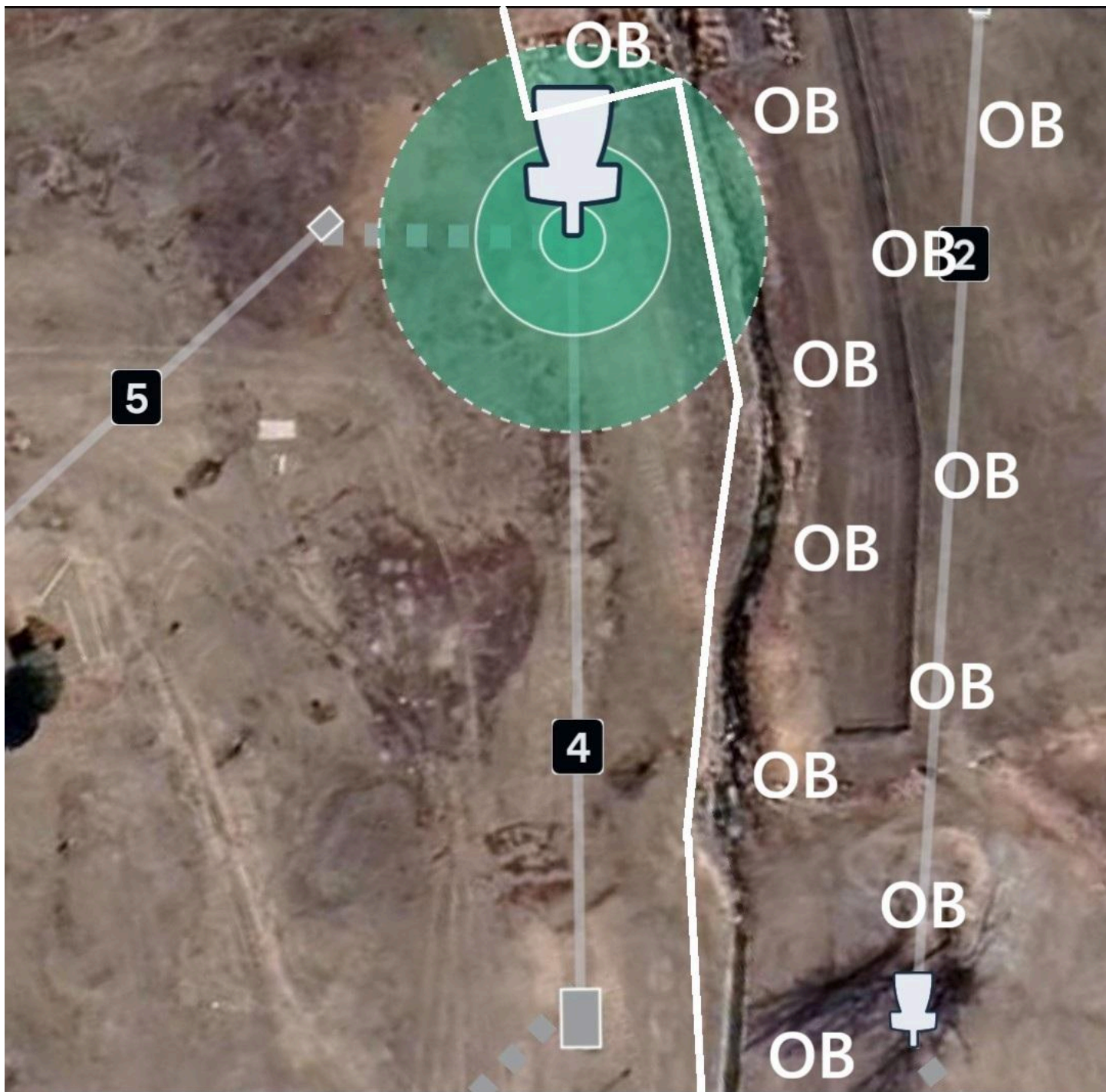
Par 3



Hole 3

303 ft

Par 3



Hole 4

255 ft

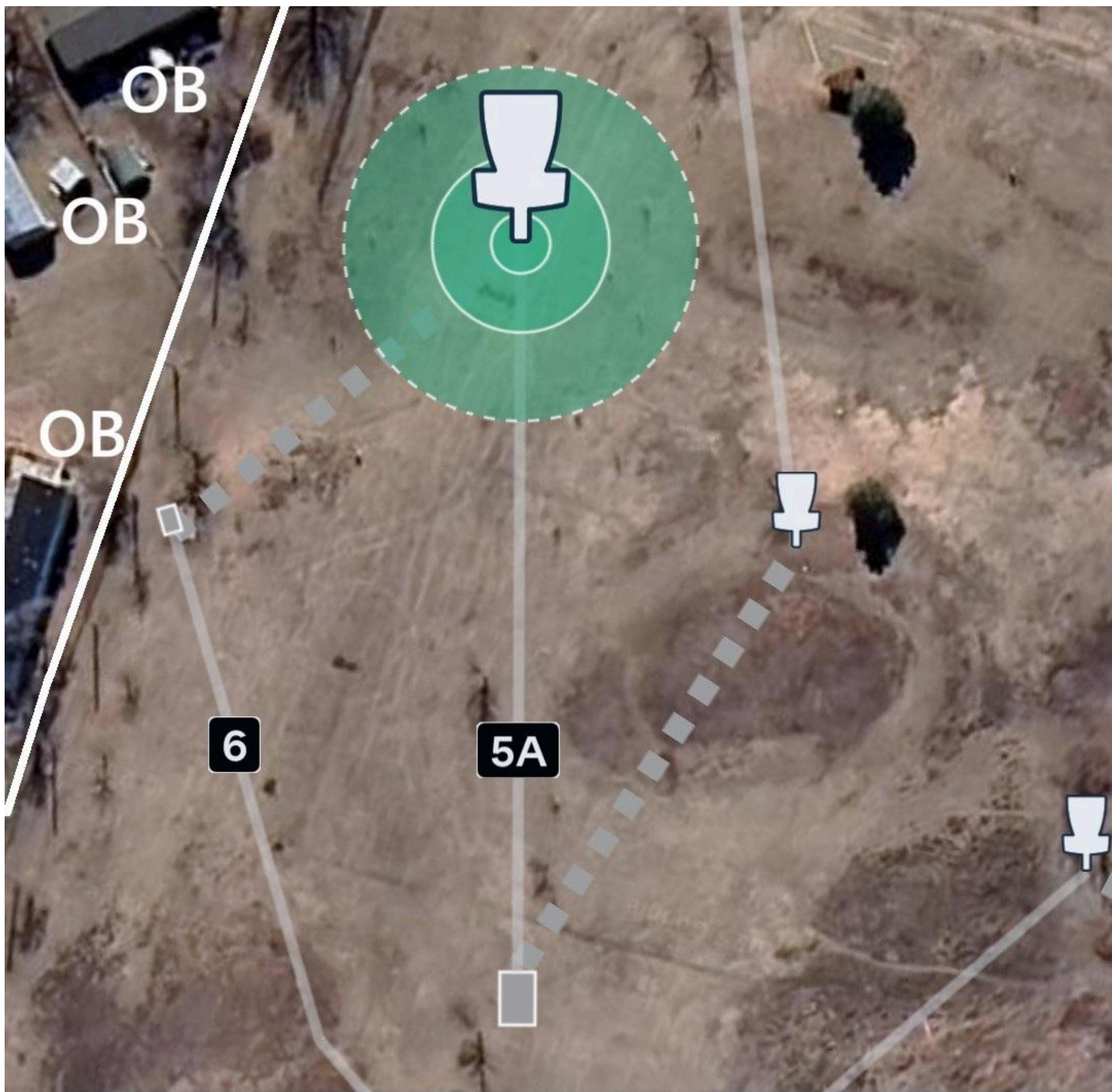
Par 3



Hole 5

330 ft

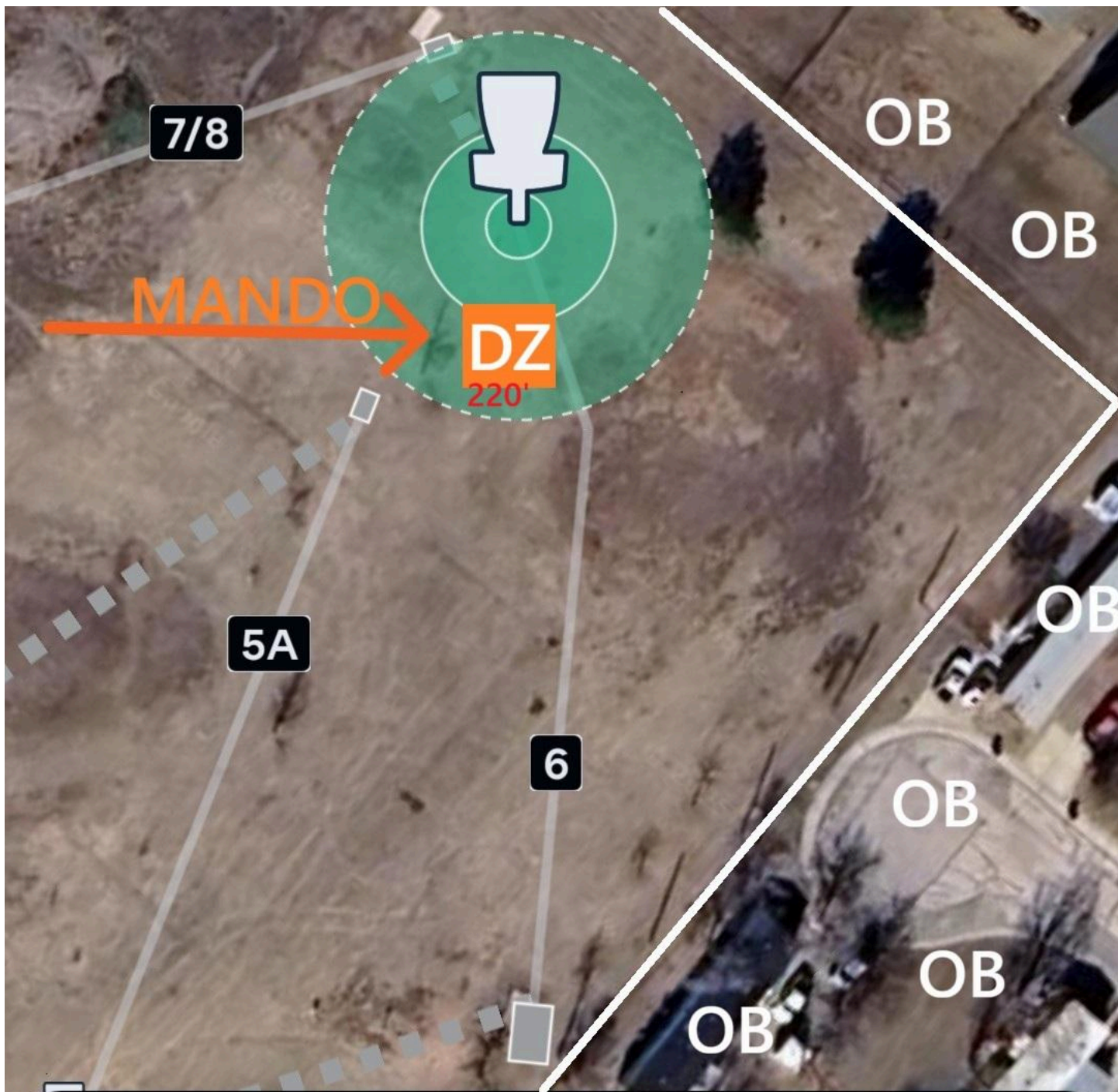
Par 3



Hole 5A

270 ft

Par 3



Hole 6

257 ft

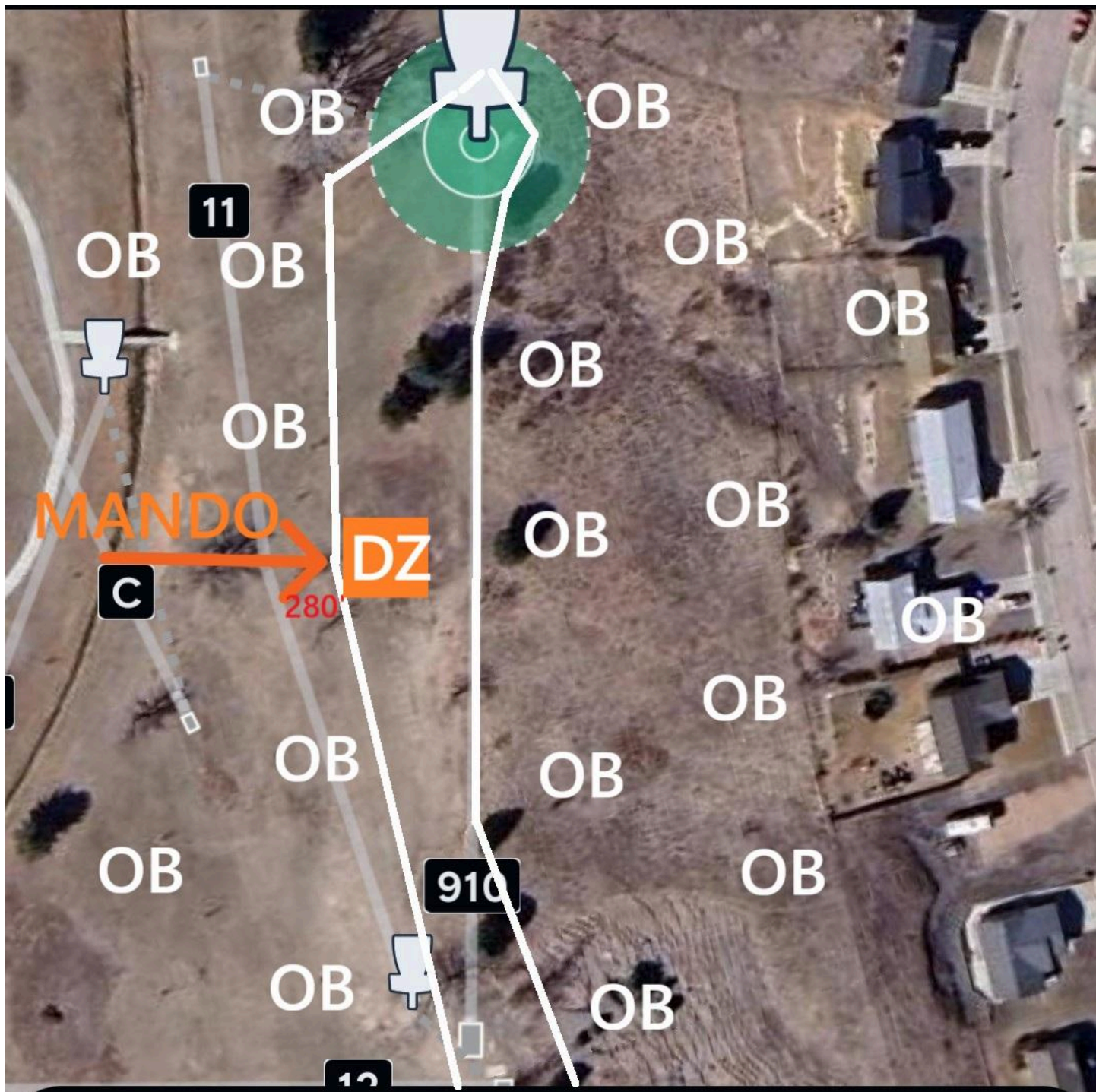
Par 3



Hole 7/8

246 ft

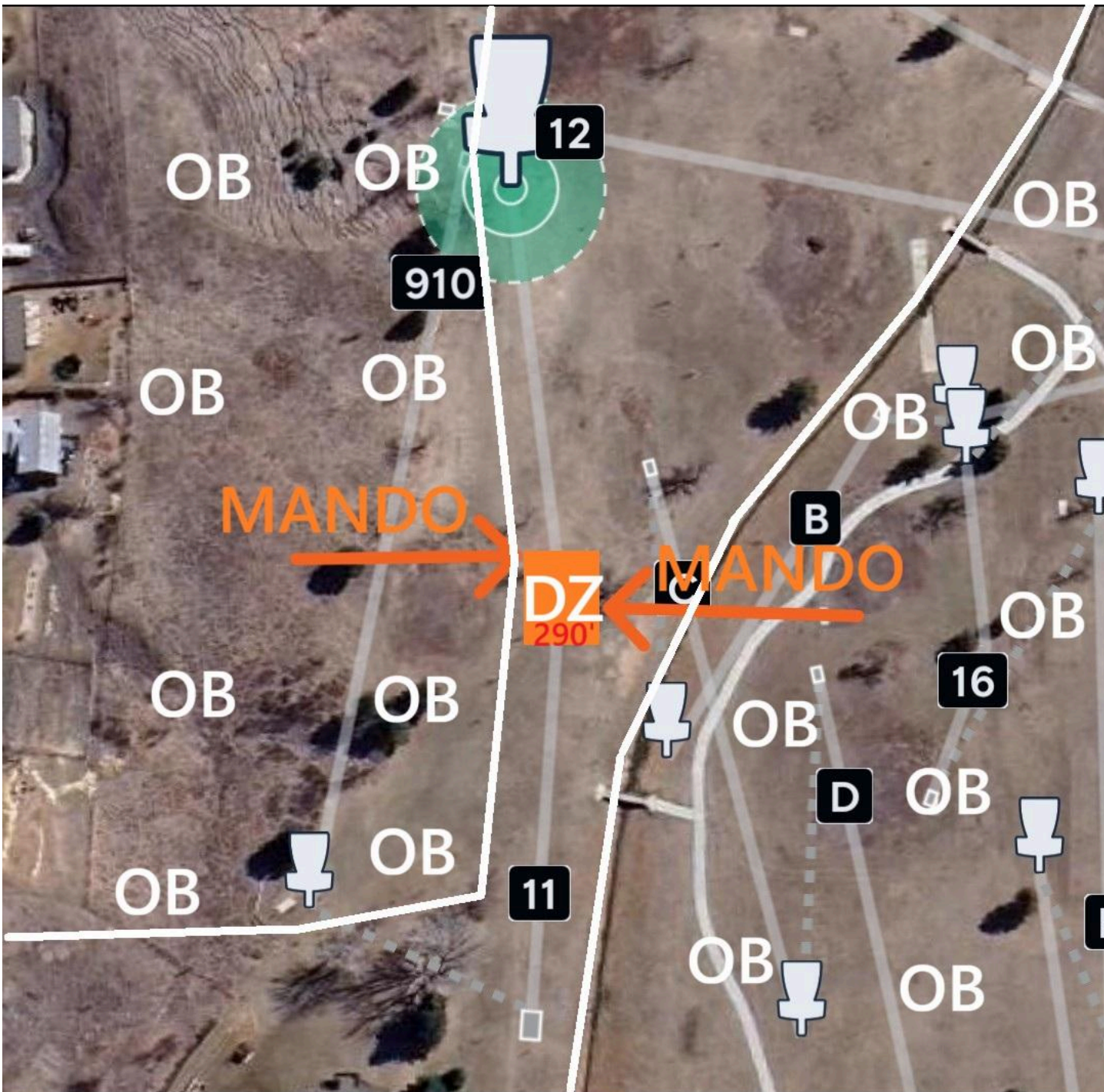
Par 3



Hole 910

Par 4

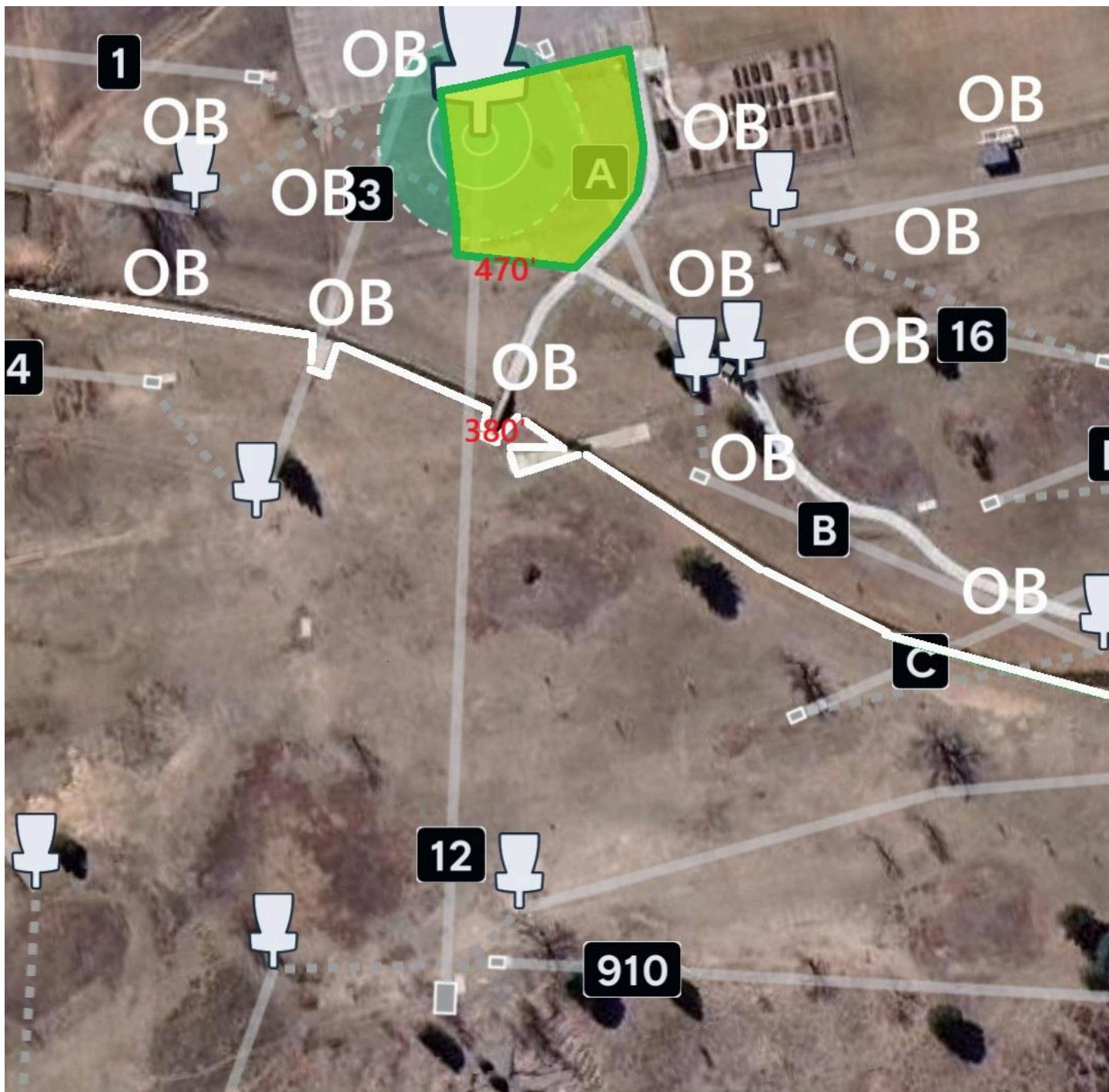
528 ft



Hole 11

577 ft

Par 4



Hole 12

543 ft

Par 4